

Vol. 19 No. 1  
January 1, 2021

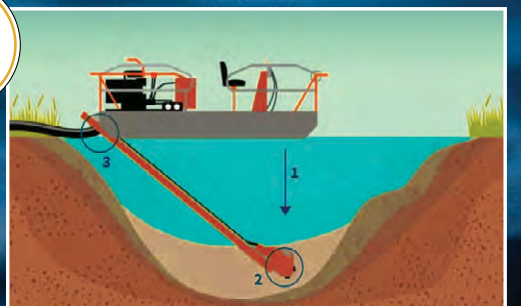
**f** **FREE** Every Friday  
www.hawkeyetrader.com

Happy New Year!  
**YOUR HAWKEYE TRADER**

Phone: 641-675-3971 • Fax: 888-203-9720 • E-Mail: ads@hawkeyetrader.com

**WHAT IS DREDGING???**

DREDGING IS A PROCESS USED TO REMOVE ACCUMULATED SEDIMENT FROM THE BOTTOM, AND IN SOME CASES, THE BANKS OR SIDES OF A RIVER, LAKE, STREAM OR OTHER BODY OF WATER. A SPECIALIZED PIECE OF EQUIPMENT CALLED A DREDGE CREATES A VACUUM THAT SUCKS UP AND PUMPS OUT THE UNWANTED SEDIMENT AND DEBRIS.

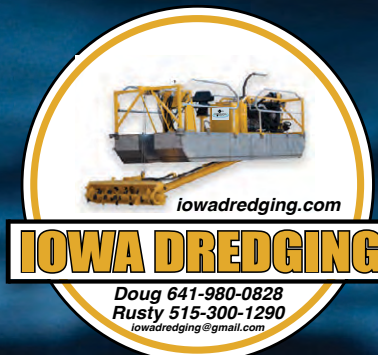


- 1** Operator lowers boom to the bottom of the body of water.
- 2** Rotating cutter-bar uses teeth to loosen settled material, as the submersible pump removes sediment from the bottom of the body of water.
- 3** the debris is transported away for final processing.

**THIS PROCESS IS USED FOR**

- > CREATING WATERWAYS
- > REOPENING CHANNELS
- > RESTORING SHORELINES
- > MAINTAINING ECOSYSTEMS
- > GATHERING CONST. MATERIALS
- > REMOVING TRASH & DEBRIS
- > RECONFIGURING WATERWAYS
- > INCREASING WATERWAY DEPTH
- > MINING FOR METALS
- > & MORE!

**SERVING YOUR MIDWEST DREDGING NEEDS!**



Iowa Dredging utilizes a compact dredge engineered specifically to facilitate removal of sediment in HOA Ponds - Sediment Basins Rural - Farm Ponds & Small Lakes.



**Doug 641-980-0828**  
**Rusty 515-300-1290**  
iowadredging@gmail.com

**CALL US TODAY TO GET YOUR PROJECT SCHEDULED FOR 2021!**

**www.iowadredging.com**

**KARS, INC**

www.karsincdsm.com

**ON EUCLID**  
As for DeMarcus

2000 E. Euclid  
Des Moines, IA  
515-265-0215



**Low Miles**  
2007 Hyundai Sonata SE  
V6, Auto,  
Nice!X, Equipped  
\$5,995



2012 Cadillac Escalade Premiere Edition  
AWD, 6.2 V8, Auto, Loaded, Heated Leather, 3rd Row Seating, 205K  
\$18,995



2014 Dodge Challenger SXT  
AWD, V6, Auto, Full Power, CD/MP3, Sunroof, Heated Seats, 106K  
\$14,995



**1-Owner**  
2005 Chevy Silverado K1500 Z71  
Crew Cab, 4x4, 5.3 V8, Auto, Loaded, Heated Leather, 1-Owner  
\$6,995



2012 Jeep Wrangler Rubicon  
4WD, V6, Auto, Air, Loaded, Low Miles, Only 53K Miles  
\$29,995



**AWD**  
2006 GMC Yukon Denali  
AWD, 6.0 V8, Auto, Full Power, 3rd Row Seating, Heated Leather, CD Changer, Sunroof, 140K, \$10,995



2007 Chevy Avalanche LTZ  
4WD, V8, Auto, Loaded, Heated Leather, Full Power, Sunroof, 177K  
\$10,995



2009 Honda CR-V EX-L  
4WD, 4 Cyl, Auto, Loaded, Full Power, Sunroof, 124K  
\$9,995



2006 Chevy Suburban LTZ  
4WD, 6.0 V8, Auto, Loaded, Heated Leather, 3rd Row Seating, Sunroof  
\$9,995



2012 Chevy Traverse LT w/1LT  
AWD, V6, Auto, Full Power, 3rd Row Seating  
\$8,995



**1-Owner**  
2011 Jeep Patriot Sport  
4 Cyl, Auto, Well Equipped, 91K  
\$10,995



2010 GMC Acadia SL  
V6, Auto, Loaded, 3rd Row Seating, CD/MP3, Keyless Entry, 141K  
\$7,995



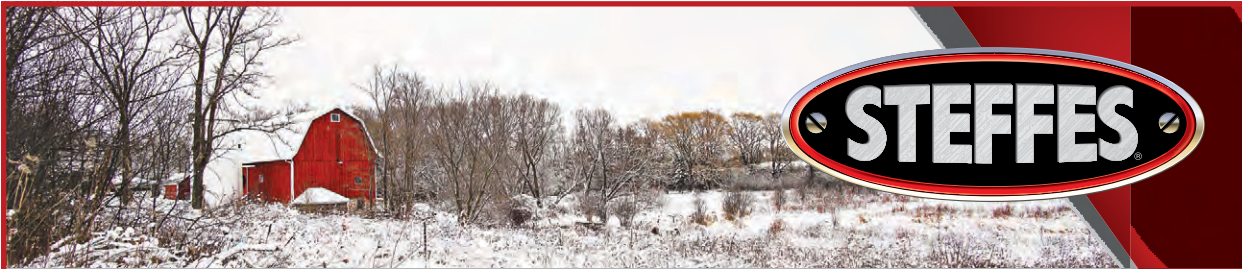
2016 Dodge Charger  
Police, AWD, 5.7 Hemi, Auto, Full Power, MP3  
\$16,995



2011 Chevy Equinox LT w/2LT  
4 Cyl Auto, Loaded, Heated Leather, Full Power, 105K  
\$8,995



2012 Ford Fusion SE  
4 Cyl, Auto, Air, Heated Leather, Full Power, CD/MP3, 141K  
\$5,995



## UPCOMING AUCTION CALENDAR

### Steffes Online Auction

Upper Midwest Locations | Closes: January 6 at 10AM

### Louisa County, IA Land Auction - 150± Acres

Columbus Junction, IA | January 8 at 10AM

### Quality Tested Hay Online Auction

Steffes Group, Litchfield, MN | Closes: January 12 at 12PM

### Honeyman Firearms Collection Online Auction

Steffes Group, Litchfield, MN | Closes: January 13 at 7PM

### Marion Café Online Auction

Marion, ND | Closes: January 14 at 3PM

### Steffes Online Auction

Upper Midwest Locations | Closes: January 20 at 10AM

### Barnes County, ND Land Farmland For Rent

Valley City, ND | January 22 at 5PM

### Quality Tested Hay Online Auction

Steffes Group, Litchfield, MN | Closes: January 26 at 12PM

### Onchuck Estate Collectible Toy Online Auction

Steffes Group, West Fargo, ND | Closes: January 27 at 10AM

### Johnson County, IA Land Auction - 40± Acres

Lone Tree, IA | January 27 at 10AM

### Burlington, IA Real Estate Online Auction

Burlington, IA | Closes: January 27 at 1PM

### Muscatine, IA Real Estate Online Auction

Muscatine, IA | Closes: January 27 at 4PM

### Brown Estate & Mills Personal Property Online Auction

Steffes Group, Mt. Pleasant, IA | Closes: January 27 at 4:30PM

### Iowa City, IA Real Estate Online Auction

Iowa City, IA | Closes: January 27 at 5PM

### Gilmore City, IA Real Estate Online Auction

Gilmore City, IA | Closes: January 28 at 4PM

### Cass County, ND Land Farmland For Rent

Gardner, ND | January 29 at 5PM

### Lindstrom, MN Estate Online Auction

Lindstrom, IA | Closes: February 3 at 10AM

### Walsh County, ND Land Online Auction - 732± Acres

Edinburg, ND | Closes: February 9 at 12PM

### Quality Tested Hay Online Auction

Steffes Group, Litchfield, MN | Closes: February 9 at 12PM

### Steffes Online Auction

Upper Midwest Locations | Closes: February 10 at 10AM

### Dakota Valley Growers

### Inventory Reduction Online Auction

Bathgate, ND | Closes: February 16 at 10AM

### Traverse County, MN Tillable Farmland Online Auction

Taylor Township, MN | Closes: February 17 at 1PM

View more upcoming auctions at **SteffesGroup.com**

Steffes Group, Inc., 2245 East Bluegrass Road, Mt. Pleasant, IA 52641 | 319.385.2000

20' & 40'  
Storage Containers  
Starting at \$1,895  
For Sale or Rent

Dry & Mouse Proof

ABC Portable Storage  
Delivery Available  
563-299-2901

**TUFFY SPECIAL**

VOLUME PRICES  
573-657-2176  
www.amegamobilehomes.com

**AG RELATED**

FOR SALE: John Deere 4230 Tractor, 9000 Hrs, Iowa Tractor, Turbo, Clean Inside/Out, Loader Available, \$18,950.  
573-881-3557 1-1

FOR SALE: Small Square Bales Of Hay, \$6.00 Each.  
712-830-1426 1-8

FOR SALE: John Deere 4240 Tractor, 1982, CAH, QR, 9926 Hrs., One Owner, Ft. Fenders, Extra Lights/Mirror, 95% Firestone Factory Duals, Real Sharp, \$26,500.  
573-881-3557 1-1

★★★★★  
**5-STAR SPRAY FOAM INC.**  
BROOKLYN MONTEZUMA  
We Now Offer CONCRETE RAISING & LEVELING  
Open Cell & Closed Cell Foam  
Call or Email Craig  
**641-328-4163**  
fivestarsprayfoam@gmail.com  
NEW CONSTRUCTION, REMODELS, POLE BARNS  
CRAWL SPACES, ATTICS & MORE  
Free Estimates • Fully Insured  
WWW.5STARSPRAYFOAM.COM

**DES MOINES DIESEL INC**  
Servicing All Your Diesel Fuel Injection Needs  
Pumps, Nozzles & Turbos

**Ag & Truck Performance Parts**

1-800-475-6086 • 515-265-7318  
3211 Delaware Ave Des Moines, IA 50313  
1 Blk E. of the ADM Soybean Plant

FOR SALE: 2-John Deere 4020 D Tractor, 1970, One Owner, Good Sheet Metal, Poor Paint, 10,000 Hrs., Or John Deere 4020 D Tractor, 1968, 6000 Hrs., With Great Bend QT Loader, Will Trade, \$12,500 Choice.  
573-881-3557 1-1

FOR SALE: Cattlemen New Heavy Iron Corral Panels, \$60. We Also Have Accessories! Free Replacement If Anything Gets Damaged.  
816-507-3116 Or 816-898-0234 1-1-21

**MOTOR INN KNOXVILLE • IA**

CHEVROLET BUICK DODGE RAM GMC Jeep CHRYSLER

Sales • Service • Parts • Body Shop  
1705 N Lincoln • 1-800-933-8673  
www.MotorInnAutoGroup.com

<p>KT1123 2015 Jeep Wrangler 4x4, Rubicon, Removable Top, Leather, Loaded, 26K Miles \$38,995</p>	<p>KCC2729A 2015 Chevy SS 6.2L V8, RWD, Loaded, 51K One Owner Miles! Just In! \$31,995</p>	<p>KT32711A 2013 Chevy Traverse LT FWD, 105K, Sharp! Just In! \$11,995</p>
<p>KT1129A 2015 Chevy Colorado 4x4, Crew Cab, 71K Miles, Super Sharp! \$24,500</p>	<p>KT1090A 2010 Toyota Tacoma 4x4, Ext, Clean! Just In! \$13,995</p>	<p>KT1094A 2010 Ford F350 1 Ton Crew Cab, 4x4, Lariat, 6.9L Diesel, 135K, Super Clean! Just In! \$25,995</p>
<p>KD72506A 2015 Dodge 1/2 Ton Ram 4x4, Big Horn, Diesel, 99K \$24,995</p>	<p>KB2520E 1998 Ford Escort Coupe Auto, Only 62,591 Miles \$3,500</p>	<p>KDT2288A 2005 GMC Yukon Denali XL 4x4, 209K, Runs Great, Excellent Tow Vehicle! Was \$6,995 Now \$5,995</p>

We Have Domestic Or Import Cars, Trucks, SUVs And Minivans. Let Us Know What You're Looking For And We'll Go To Work For You! We Have 5 Dealerships Of Inventory To Choose From.

We want to purchase & market your grain.

Buyers of Corn and Soybeans.  
Organic & Non-GMO Corn and Soybeans.  
Contracts Offered • Forward Pricing

**Baring Elevator**

CONTACT US FOR PRICING  
Baring, MO  
660.892.4411  
baringelevator.com

**T.H.E. COMPANY** TOM HASSENFRITZ EQUIPMENT  
**MT PLEASANT, IA. WWW.THE-CO.COM 800-634-4885**



**\$12900**  
 JD 4020, Console, Dual Valve, like new tires, K&M Step



**\$7495**  
 Factory 3 point Factory-wide front  
 JD 620, like new tires, PS, good paint new seat & WP



As low as **\$593/mo**  
 0% Financing Available  
 2020 JD 4066R, 440R Loader, Diesel, 4WD



**\$4295**  
 Loaded!  
 JD Gator TX tilt dump, bed liner turn signals,



~~\$7295~~ **\$6995**  
 JD 2210, 62" Deck, DSL, 4WD, 3pt, Will Sell Loader @ Cost



**\$13495** just 220 hrs  
 JD 1025R, MFWD, Loader, 60" mower Like new



**\$10995**  
 JD 1026R w/60D Deck, front brush guard



**\$10900**  
 680 Hours, Super Clean  
 JD 2305, DSL, 4WD, Hydro, 3pt, Loader, 62" Deck



**\$12900**  
 Cat 236B, 2006 2282hrs, air, hyd. connect



**\$10995**  
 Black stripe 1066, 565 koyker loader, QT, low hours



**\$12900**  
 JD 2750 JD loader, 6600 hours, 75hp



**Must Go!**  
 Priced like steel!  
 Aluminium Trailer 76"x12' \$2399. 84" X14' \$2529.



**\$15999** New!  
 New Woods 15' Batwing Cutter, HD Aircraft Tires



**\$1995**  
 Pulverizer, large long teeth, large heavy roller



**\$1395**  
 Includes hoses, tips  
 Heavy duty post puller Priced tlike the cheap ones!



**Save \$100!**  
 SAE upper/lower bars  
 Heavy duty Forks 48" HD forks 52" wide



**\$2495**  
 Over 60 sold!  
 Woodland Mills WG24, pto, stumpgrinder



**\$4995**  
 Clark GPX25E 5K triple mast JUST 4700hrs!



**\$12900** Just 1000 hrs!  
 Doosan 5K triple mast, side shift 2010



**\$7995**  
 1999 Cat GP25, 5K, Full Free 130", SS, LP, Cab, 7450 Hrs



~~\$10000~~ **\$8995**  
 Cat CAGP40, 6399 Hrs, 8000LB Lift, 130" Mast, LP, Pneumatic



**\$6995**  
 Yale GLP065TG, Triple Mast, SS, LP, 5,800 lb Lift



**\$4295**  
 Pneumatic Tires  
 Toyota FG30, 6000 lb Lift, Double mast 130", SS, Gas



**\$9095**  
 2006 Caterpillar P5000, 3700 Hrs, LP, Triple Mast, SS

**We Need Skid Steers!**

- Tractors
- Forklifts
- Construction
- Pallet racking
- Skid Steers!

Have equipment to sell? We also sell on consignment. We get your price, not the BUYERS!

**SNOW BOX BLADES**

- 1/4" Construction
  - Choice of Mounts
  - Floating Skid/Shoes
  - Reversible Cutting Edge
  - Choice of cutting edges
- Starts at \$999  
 60" \$999, 72" \$1099, 96" \$1300, 120" \$1499.



1998 Evolution Classic VERY NICE!

**NO DOC FEES!**  
 This Week's Special **\$6,495**  
 G&C Cycle  
 Chariton, IA • 888-475-2243  
 www.cc-cycle.com

FOR SALE: Nice Small Squares Alfalfa Hay 1st, 2nd, 3rd Cuttings. Also, Shredded Cornstalks In Small Squares. Stop In For All Your Winter Hay Needs. 2 Miles North Of Caseys.

Emery Miller  
 20843 200th St.  
 Sigourney, IA

1-1

FOR SALE: Certified Organic Big Bales Grass Hay, 4x5 1/2 Net Wrap, Baled New McHale Baler, \$50 Each.  
 573-253-6188 1-1

FOR SALE: New 3 Pt. Tillers, Heavy Duty, Gear Driven, 7 Ft to 10 Ft, Starting at \$2,650.  
 660-874-4455 1-28-21

January



Bring Your Plans In For FREE ESTIMATE



Full Line of Building Materials



COMMERCIAL - AGRICULTURAL RESIDENTIAL

17893 212<sup>th</sup> Street • Bloomfield, IA 52537  
 641-722-3605 • Mon. - Fri. 7 AM - 5 PM



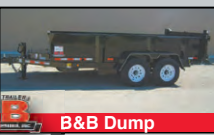
1111 Wildwood Drive  
 OTTUMWA, IA 52501  
**641-683-1888**  
 carrollsupply.com

**We Now Carry Hillsboro Truck Beds in Stock!**

• Aluminum Beds Starting @ **\$2,950** • Steel Beds Starting @ **\$1,950**



**INSTALLATION AVAILABLE**



- Rental Equipment & Wall Forms
- Concrete Equipment New & Used
- Insulated Concrete Forms
- Rebar & Fabrication
- Foundation Water Proofing Products
- Culverts
- Stabilization Fabric
- Decorative Concrete Supplies
- By Butterfield Color
- We Are A Dewalt Dealer
- Stump Grinder Rental Available

Find us on facebook

@ Carroll Distributing & Construction Supply, Inc.

**Call For A Location Near You!**



Specializing in Roll Forming  
 • Pole Barn Packages  
 • Re-Roofing  
 Full Line of Building Materials



1187 Orange Ave, Kalona  
 319-646-1103 vm  
 Bring In Your Plans for a Free Estimate

# SULLIVAN AUCTIONEERS, LLC

Sullivan Auctioneers LLC is a full service licensed auction company. We are in our 41st year of professionally conducting ag equipment and ag real estate auctions throughout the country!



**TOLL FREE (844) 847-2161**  
**www.SullivanAuctioneers.com**

**A FAMILY OWNED BUSINESS SINCE 1979**

**FOR SALE:** John Deere 2940 Tractor, CAH, HiLo, Estate Tractor, 5300 Hrs., Set For Many Years, Shifting Cables Stiff, New Rubber, \$13,500.  
 573-881-3557 1-1

**FOR SALE:** 24 Ft x 5 Ft Free-Standing Cattle Panels, Weighing 600 Lbs Each, Fastener Chains Included. Located in Troy, IA.  
 641-680-0892 TFN

**WANT TO BUY:** Small Square Baler. Call Any Time.  
 515-835-1153 1-1



**www.hawkeyetrader.com**

## METAL ROOFING



Installing Metal Roofing On All types of Buildings  
 Houses & Barns Commercial & Residential  
 Customer Satisfaction Is Our Goal!

**WAGLER BUILDERS**  
 CALL TODAY FOR A FREE ESTIMATE: 641-777-5000  
 EMAIL: waglerbuilders@hotmail.com  
 www.waglerbuilders.com



**"OVER" 30 Used Harley Dressers!**

**NO DOC FEES!** For \$8,995 or Less  
**C&C Cycle**  
 Chariton, IA • 888-475-2243  
 www.cc-cycle.com

**MAST VINYL WINDOWS**  
 THERMO-PRO WINDOWS  
**Custom Size Is Our Specialty**  
 Professional Installation Available  
**FREE ESTIMATES**  
 22172 Hwy. 63  
 Bloomfield, IA 52537  
**800-206-9949**

**- Want To Buy -**  
 I Would Like to Buy Your Lifetime Collection of Coins & Currency  
 Paying Cash on the Spot for Over 50 Years  
**CALL ME NOW!**  
 Will Pick Up at Your Home, Office or Bank  
**Want to Buy Sterling Silverware, Casino Strikes, \$500 & \$1,000 Bills, Rolex Watches & Pocket Watches**  
**Wallis Company - Max Hagen**  
 Cedar Rapids, IA  
 Call 319-396-7760 to Discuss Your Collection

**Metal Roofing**  
**Buy Direct**  
**AW Metal LLC**  
 Metal Roofing Headquarters  
**641-664-3990**  
 www.awmetal.net

### AUTOMOTIVE

**FOR SALE:** Chilton Motor Age Flat Rate And Service Manual, Year 1950, \$150.  
 641-672-2005 1-8

**FOR SALE:** 1950 GMC 248 Inch Truck Eng. Complete, Runs Good, With 4 Sp. Trans. \$600.  
 217-882-8301 1-1

**FOR SALE:** 2011 Ford F250 Lariat FX4, 6.7L, 108K Miles, Black, Clean Truck, Salvage Title, \$30,500.  
 660-216-0084 1-1

**FOR SALE:** 238 Detroit Diesel, Low Hours With 115 KW Generator, Power Switch Panel And Battery Charger, \$1,850 OBO.  
 319-330-9729 1-1

**ATTN TRUCK OWNERS:** Rhino Linings Offers You The Worlds Number One Sprayed In Truck Bedliner. Also Works On Livestock Tanks, Creep Feeders, Horse Trailers, Etc. Call For An Appointment & More Info.  
 641-799-5672 TFN

**FOR SALE**  
**Driveway Fabric Rolls**  
 Commercial, Heavy Duty Designed for Heavy Traffic 12'5" Wide • 432' Long  
  
 \$370.00/Roll  
**660-216-0938**

**NOTICE!**  
**THE HAWKEYE TRADER**  
 reserves the right to refuse any ad or to edit any portion of an ad at any time. The Hawkeye Trader will give credit for only one week of incorrect ad copy. If there is an error in the first week's publication, call our office and an adjustment will be made. In case of error your ad may be run in the following week's edition at no charge or you may request a refund or credit on your bill. The Hawkeye Trader does not accept liability for any loss or damage caused by an error or inaccuracy in the printing of an ad beyond the amount paid for the space occupied by the advertisement in which the error occurred. The Hawkeye Trader cannot guarantee specific page or location placement of any ad. There will be a \$10 check return fee for any NSF check. We are not responsible for illegible copy received in mail. If your item in the paper is sold before your ad runs out or after we receive it we will issue you credit for further advertising. Any pictures for display ads received become the property of The HawkeyeTrader unless accompanied with a self addressed stamped envelope.

**NO \$\$\$ DOWN**  
**MOBILE HOMES**  
**CALL FOR DETAILS**  
**573-499-9993**  
 www.columbiadiscountshomes.com

# SAM'S RIVERSIDE REPAIRABLES

805 SE 30th St • Des Moines, IA • Phone 515-265-1212 • Toll Free 800-308-4096 • www.samsriverside.com  
 REPAIRABLES 515-265-1212 PARTS 515-265-8792 HEAVY TRUCKS 515-265-1656



SKU:620230  
 2006 Chevrolet Silverado 1500 LS 4x4, Ext Cab, 5.3L 8 Cyl, 115,774 Miles \$6,950



SKU:816068  
 2008 Chevrolet Silverado 2500 LT 4x4, Crew Cab, 6/6L, 8 Cyl Diesel, 121,566 Miles \$14,900



SKU:B59846  
 2011 Chevrolet Equinox LTZ AWD, 2.4L, 4 Cyl, 109,787 Miles \$7,950



SKU:B04721  
 2011 Dodge Dakota Big Horn/Lonestar Crew Cab, 4x4, 4.7L, 8 Cyl, 75,193 Miles \$12,900



SKU:C48009  
 2012 Ford Fusion SE 2.5L 4 Cyl, 98,176 Miles \$5,950



SKU:E91350  
 2014 Ford F150 STX 4x4, Ext Cab, 5.0L, 8 Cyl, 97,906 Miles \$15,900



SKU:E22814  
 2014 Dodge Ram Big Horn Mega Cab, 4x4, 6.7L, 6 Cyl Diesel, 113,629 Miles \$32,900



SKU:E81375  
 2014 Chevrolet Captiva LTZ Sport Fleet 2.4L, 4 Cyl, 36,634 Miles \$9,950



SKU:F00923  
 2015 Chevrolet Camaro ZL1 Convertible 6.2L, 8 Cyl, 30,335 Miles \$32,900



SKU:F32066  
 2015 Buick Enclave Premium AWD, 3.6L, 6 Cyl, 68,822 Miles \$15,900



SKU:K04122  
 2019 Chevrolet Suburban 1500 Premier 4x4, 8 Cyl, 30,608 Miles \$43,900



SKU:K71331  
 2019 Dodge Ram 2500 Limited Crew Cab, 4x4, 6.7L, 6 Cyl Diesel, 6,646 Miles \$52,900



SKU:K58709  
 2019 Dodge Ram 1500 Classic Lone Star Silver 4x4, Crew Cab, 5.7L, 8 Cyl, 3,017 Miles \$21,900



SKU:K96787  
 2019 Dodge Ram 1500 Classic Warlock 4x4, Crew Cab, Theft, 5.7L, 8 Cyl, 14,147 Miles \$27,900



SKU:H14258  
 2017 Jeep Wrangler Unlimited Sport 4x4, Theft, 3.6L, 6 Cyl, 28,805 Miles \$25,900

**Our Hours Are 8:00 AM - 5:00 PM M-F - Sat 8:00 AM - 2:00 PM - Sun 1:00 PM - 5:00 PM**

**Harbison Brush Mowing**  
 Brush Mowing • CRP Fields • Timber • Trails  
 Pasture Cleanup • Tree Shear • Fence Rows

**Jeremy Harbison**  
 Cell: 319-461-0376  
 Home: 319-694-2300

**HARBISON FENCING**  
 "For All Your Fencing Needs"  
 Barbwire • Woven Wire  
 Silt Fence • Vinyl Fencing  
 Hi Tensile

319-694-2300 - Home  
 319-461-0376 - Cell

**PEOPLES COMPANY**  
 INNOVATIVE. REAL ESTATE. SOLUTIONS.  
 Specializing in Farmland and Residential Sales

**563-659-8185**  
 Cell: 563-320-9900  
 700 6th Avenue, DeWitt, Iowa 52742  
 www.yeggemcneiland.com

**Douglas R. Yegge, Broker**

**FARMLAND SALES - AUCTIONS - 1031 TAX FREE EXCHANGES**

**Linn Co. MO**  
 76 Acres, 71.48 Tillable. Nice Layng Farm. East of Purdin, MO. \*Agent Owned

**Appanoose Co. IA**  
 PENDING - 62 acres, Quality soils, high CSR, tiled & terraced. East of Seymour, Iowa.

**Lewis Co. MO**  
 PENDING - 48.9 acres, 44.23 tillable, North of LaBelle, Missouri. Investment farm with recreational possibilities. High return.

67 acres, 63 tillable, West of Cincinnati, Iowa. Nice rolling parcel with possible building site.

**PHEASANTS, QUAIL, PIGEONS**  
 We Have Birds To Train And Freshen Your Dogs. We Can Provide Birds To Enhance Your Hunting

OPEN 7 DAYS A WEEK!

**MIKE'S GAME BIRDS**

  
 2464 BENTON AVE  
 Mt. PLEASANT, IA  
**319-931-2774**

**CLASSIFIED COUPON**  
 Use the Power of Your Traders for Regional Classified Results!  
 Clip this coupon to run a Classified Ad for **\$8.75** for one week.  
 1 Classified Ad for two weeks or 2 Classified Ads for one week for **\$17.00**.  
 Picture ads are not included with coupon, call for pricing.  
 Each ad must be 20 words or less. additional 20¢ per word over 20 words

**AD NO. 1: (20 Words Or Less)**


**AD NO. 2: (20 Words Or Less)**


**Triple Your Classified Ad's Power By Running It In The Traders**  
**The HAWKEYE TRADER, SHOW ME TRADER & MID-MO TRADER!**  
 WHEN YOU SELECT ALL THREE TRADERS, YOUR AD WILL BE READ IN OVER 170 COUNTIES IN 5 STATES & ONLINE!

**HAWKEYE TRADER ONLY:** 1 Ad For One Week **\$8.75** (84 Counties)

**HAWKEYE TRADER ONLY:** 1 Ad For Two Weeks **\$17.00** Or 2 Ads For One Week **\$17.00** (84 Counties)

**BOTH HAWKEYE & SHOW ME TRADER:** 1 Ad For One Week **\$17.00** or 2 Ads For One Week **\$32.00** (150 Counties)

**BOTH HAWKEYE & MID MO TRADER:** 1 Ad For One Week **\$17.00** or 2 Ads For One Week **\$32.00** (106 Counties)

**BEST VALUE: HAWKEYE, SHOW ME & MID MO TRADER:** 1 Ad For One Week **\$25.00** (170 Counties)

**BEST VALUE: HAWKEYE, SHOW ME & MID MO TRADER:** 2 Ads For One Week **\$47.00** (170 Counties)

To Receive This Rate, Coupon Must Be Mailed In With your Payment  
 Or Use Our Website @ [www.hawkeyetrader.com](http://www.hawkeyetrader.com) For More Savings Options  
**HAWKEYE TRADER, P.O. Box 96**  
**Pulaski, IA 52584**

**MISSOURI LIVESTOCK SYMPOSIUM** *Go's Virtual*

**MORE INFO AT MISSOURILIVESTOCK.COM**

**January 7, 2021**

- **Ask the Expert, a Q & A Session with Ken McNabb.** Watch website for registration info and how to submit questions.

**More January events**

- **Dave Golian**, New London, MO. Recorded sessions on proper saddle fit and choosing the right tack.
- **1/14/21, Dr. Larry Holler**, South Dakota State University veterinarian. Zoom sheep session.
- **1/21/21, Dr. Cindy Wolf**, veterinarian, Univ. of Minnesota, Zoom sheep session
- **Fred Homeyer**, breeder and educator, Robert Lee, TX. Goat session.

**MORE INFO AT MISSOURILIVESTOCK.COM**

**Golden Grain Bins Winter Discount**

Grain Bins	Floors	W/12" Supp. & Flashing
18'x18' 4,195 Bu. \$4,135	18'	\$1,026 30' \$2,870
27'x21' 11,265 Bu. \$7,914	21'	\$1,404 36' \$4,092
42'x24' 32,245 Bu. \$17,581	27'	\$2,344 42' \$5,573

**GMLS Industries, Inc.**  
 PH: 660-699-2179  
 Or 888-983-2136  
[www.gmlsindustries.com](http://www.gmlsindustries.com)

**LAN-DOW BUILDINGS**  
 "We Build to Suit Your Needs"  
*"Custom Built"*  
 Pole Barns  
 Garages  
 Utility Buildings

**"H" Don or Dick Middleton**  
**Memphis Lumber Co.**  
**1-800-337-5858**  
**Phone: 660-465-8595**  
**Fax: 660-465-8596**

**Vermeer 605 N Balers, Twin Rakes, Trailed Mowers, Disc Mowers, Tedders, Bale Processors**

**DewEze Bale Beds**

**Danhauser Posthole Diggers & Posthole Drivers**

**Hide-Away 5th Wheel Hitches**

**Flex Harrows**

**Used Equipment**  
**9000 Bale Processor**  
 Call Us For All Your Used Equipment Needs

**Liebhart Sales, Inc**  
 17546 Lacey Drive • New Boston, MO 63557  
**660-689-3406**

  
 2006 Harley Classic  
 Only 69K Miles

**NO DOC FEES!** **\$6,495**

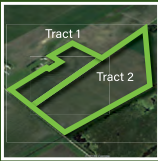
**C&C Cycle**  
 Chariton, IA • 888-475-2243  
[www.cc-cycle.com](http://www.cc-cycle.com)



*Merry Christmas*  
AND A HAPPY NEW YEAR

**TOM BRADLEY, CAI**  
(515) 202-7687

**JASON SMITH, CAI**  
(515) 537-6633



**185 ACRES FARM-  
LAND AUCTION**  
HANCOCK CO, IA  
ONLINE BIDDING ENDS 1/20



**187 ACRES FARM &  
CRP AUCTION**  
UNION CO, IA  
ONLINE BIDDING ENDS 2/3



**Big Twins Starting at \$4,495**

**C&C Cycle**  
Chariton, IA • 888-475-2243  
www.cc-cycle.com



**\$14,975**

**2012 Toyota Tacoma**

Ext Cab, 4 Dr, 2.7L I4 Eng, Auto, SR5, 4x4, Air, Tilt, Cruise, Power Windows & Locks, Backup Camera, Remote Start, Bluetooth, Sirius Radio, Bed Cover, 107K, One Family Owned

**641-891-7254**

**LIVESTOCK**

**FOR SALE:** Stainless Steel Pig Nursery Feeders; Plastic Pig Nursery Slats; Stainless Steel Pig Nipple Water Pipe; 24 Inch Stainless Steel Mahaska Industry Fan.  
641-660-3051

**BULLS FOR LEASE:** Over 70 Registered Angus & Hereford To Choose From. 90 Day Lease \$900. Trucking Available At Extra Charge. Kingdom City, MO.  
573-999-3197 TFW

1-1

**Happy New Year!**

**MASTER BUILDERS**

**Post Frame Buildings**



<b>24 x 30 x 10</b>	<b>30 x 40 x 10</b>
2 Overhead Doors	2 10x8 Overhead Doors
1 Walk Door	1 Walk Door
Concrete Floors	Concrete Floors
<b>\$19,600</b>	<b>\$21,900</b>

All Sizes On Sale  
Price Includes All Tax and Labor

**Call (641)295-4970 • (641)295-4467**  
Customers are responsible for all permits.



**2009 Ultra  
Classic  
Tour Pak Rack,  
Windshield Bag,  
48K Miles**

**NO DOC FEES!** **\$7,995**

**C&C Cycle**  
Chariton, IA • 888-475-2243  
www.cc-cycle.com



- 2 7/8" Line Posts - 9 ft and 10 ft lengths
- 4 1/2" Corner Posts
- Continuous Panels - 3, 4, 5, 6 and 7 bar
- 6 Bar Gates - 4 ft to 20 ft in 2' increments
- Full line of 6" to 24" Steel Pipe
- Bale Rings

**JANUARY SPECIALS**

*1/4 steel plate \$4 per square foot*  
*7" steel pipe \$7.35 per foot*

Stop By & See Preston, David or Ace at the Corner of Highway 63 and State Route Y South of Queen City, MO.

18680 State Highway Y • Greentop, MO 63546

**dufurpipeandsteel@gmail.com**

**DUFUR PIPE & STEEL 660-988-1028**

Hog Buildings • Semi Hauling • Lagoons



**M & R MANURE MOVING LLC**

Ryan 319.430.6968

Isaac 319.683.4692

**JAMESPORT BUILDERS**

**660-684-6931**

**POST FRAME BUILDINGS**

**Free Estimates**

**Machine Sheds • Horse Barns • Garages**

**WE ALSO DO METAL ROOFS, SPRAY FOAM INSULATION**

**(OPEN & CLOSED CELL) & CELLULOSE INSULATION**

**We Have: House Plans, Dirt Work & Concrete Available**

**Hours: Mon-Fri 8 AM - 5 PM • Sat By Appointment Only**

**32137 State Hwy 6 • Jamesport, MO 64648**

**"Serving Southern Iowa"**



# BUYERS & SELLERS WANTED

## NEXT AUCTION | SAT., March 6<sup>TH</sup>, 2021



join us on facebook! 

### 2021 CONSIGNMENT AUCTION

Shay Esbeck 660-605-0839 | Barney Esbeck 660-605-0841 | Justin Harlow 660-605-2346

HAULING AVAILABLE • LIVE & ONLINE BIDDING • NATIONWIDE ADVERTISING • CONSIGN NOW!

[BandSequipmentsales.com](http://BandSequipmentsales.com)

GALLATIN | MISSOURI

## BUY | SELL | TRADE | EVERY DAY

### POST FRAME BUILDINGS

- Best Quality
- Great Prices
- Great Service



[www.lancasterlumber.com](http://www.lancasterlumber.com)

**LANCASTER LUMBER, INC**

800-424-5071 • LANCASTER, MO

### WANTED

#### Standing Timber

Buying Walnut, Oak and Maple

20 Years In The Business

I Pay Before I Cut

RJ Lumber LLC • Raymond Yutzzy

VM: 641-722-3348

FOR SALE: Healthy Small Farm Raised Meats, Pork, Beef, Chicken, No GMO's Fed, Butchered USDA, Free Delivery To KC, MO. Call Tom. 660-358-2650 1-8

LOOKING TO BUY: Horses, Tack, Saddles, Horse Trailers, Etc. Cash In Hand, Call Wyatt. 618-535-9966 1-1

#### MISC

FOR SALE: Boxwood Wood Stove Cast Iron Vogelzang Model BX42E, Good Shape, \$150 OBO. 319-931-8372 1-1

SCOTT HUSKEY'S HOME SERVICE!! Insulated Skirting for Manufactured or Older Site Built Homes. Eliminates Frozen Water Lines & Cold Floors. Save 20 to 25% on Utility Costs. I Also Have an Uninsulated Heavy Duty Vinyl Skirting-Looks Great! Since 1972 573-696-3468 TFN

BUYER OF STANDING TIMBER: Walnut & Soft Maple Are Our Specialty; Also Other Species. Bonded & in Business for 30 Years. We Pay Before Cutting. Gingerich Sawmill LLC, Bloomfield, IA. 641-722-3002 1-1

## 22 30 USED BIG TWIN HARLEY'S \$5995-\$9995 ALL NICE BIKES!!!

C&C Cycle  
Chariton, IA • 888-475-2243  
[www.cc-cycle.com](http://www.cc-cycle.com)

## TIMED ONLINE • NO-RESERVE PREMIUM EQUIPMENT AUCTION

[www.SullivanAuctioneers.com](http://www.SullivanAuctioneers.com)

DETAILS, PHOTOS & BIDDING ONLINE

BIDDING CLOSING: **FRIDAY, JANUARY 22, 2021** STARTING AT 10:00 AM CDT

AT THE JOHN DEERE DEALERSHIP IN MANNING, IOWA (Approximately 25 mi. SE of Denison, IA or 90 mi. NW of Des Moines, IA)

List is subject to change with units being traded daily. Check the auction site frequently and anticipate some changes and many additions to the final list.

HIGHLIGHTS INCLUDE: 10+ TRACTORS, 50+ LATE-MODEL COMBINES & HEADS, SPRAYERS, TILLAGE EQUIPMENT, HAY & FORAGE EQUIPMENT AND MORE!

# VanWall EQUIPMENT

FOR INFO: MARK SEE (515) 231-9179

Sullivan Auctioneers, LLC • (844) 847-2161 • [Sold@SullivanAuctioneers.com](mailto:Sold@SullivanAuctioneers.com) • Lic. #444000107

### TIMED ONLINE • NO-RESERVE FARM EQUIPMENT AUCTION



BIDDING BEGINS TO CLOSE: WED., JAN. 20, 2021 AT 10 A.M. CST

Items are located at the farm near Solon, Iowa

Physical Address: 5369 Suttiff Rd. N.E., Solon, IA 52333

Equipment Inspection: Fri., Jan. 15<sup>th</sup> from 9:00 A.M. - 2:00 P.M.



Highlights: 2013 John Deere 6210R Premium MFWD tractor, 2,532 hours; 1979 John Deere 4440 2wd tractor, 8,368 hours; 2002 New Holland TG255 MFWD tractor, 2,420 hours; Farnall H tractor; Hagie 284 self-propelled sprayer, 3,107 hours; 2009 John Deere 9670 STS 2wd combine, 2,284 eng./1,524 sep. hours; 2014 John Deere 608C corn head; Kelderman 8 row down corn reel; 2013 John Deere 630F HydraFlex platform; Maurer Mfg. M32 32' head trailer; Unverferth HT25 25' head trailer; 2010 Kinze 3660 16 row 30" no-till planter; Kinze 2500 8/15 row no-till planter; 2015 Clarks Ag Supply "EasyLoad" 2 box tandem axle seed tender; Blue Jet AT3000 11/15 row liquid side dress applicator; Schaben P-265-1010 1010 gal. liquid tender trailer; 24' (4) section harrow on IH cart; International Harvester 540 4 bottom semi-mount plow; Allis Chalmers 3 bottom snap coupler plow; (4) Parker 505 gravity wagons; Parker 839 grain cart; Mayrath 10' x 72' swing away auger; Mayrath 10' x 33' truck auger w/ Baldor 1ph. 7 1/2 hp. electric motor; Mayrath 8' x 10' portable auger hopper; American 8' x 51' auger; Allied 8' x 28' truck auger; Sitrex RT-5800-H 4 basket hay tedder; John Deere 660 5 bar hay rake; Lahman skid loader mount hyd. post hole digger; Bradco 617 6' skid loader mount trencher; Frontier 48' loader pallet forks; Custom made 10' 3-pt. heavy duty blade; Big Ox 9' 3-pt. blade; King Kutter 6' 3-pt. root rake; King Kutter 6' box blade; Meyer 8' poly skid loader mount hyd. adj. snow blade; 3-pt. bale mover; 1983 Stock Handler 7' x 20' gooseneck livestock trailer; 1980 Delta 94" x 24' gooseneck flatbed trailer; Farm Support Items & More!

**BOB & CHRIS CLARK**

BOB (319) 361-1806

Auction Managers: John Probasco (641) 856-7355 & Jim Huff (319) 931-9292

(844) 847-2161 • [www.SullivanAuctioneers.com](http://www.SullivanAuctioneers.com) • [Sold@SullivanAuctioneers.com](mailto:Sold@SullivanAuctioneers.com) • Lic. #444000107

### DREAM HOUSE

ONLINE: [www.chateauhomes.net](http://www.chateauhomes.net)

CALL MARLA 573-657-7040

LOOKING TO LIQUIDATE OR DID YOU JUST INHERIT STUFF? Let Me Help. On-Site Tag Sale Services. Personal Property And Collectible Consultation. Also Seeking Baseball Cards, Furniture, Comic Books, The Unusual, And Anything Of Value. Before Throwing Out Your Potentially Valuable Items, Contact Me. CAGA Certified. Nathan Lilley. 573-253-4159 TFN



2008 Softail Custom Very Nice, Clean! Custom Rims & Pipes, Only 12,000 Miles, 12" Bars, Custom Headlight

NO DOC FEES! **\$8,995**

C&C Cycle  
Chariton, IA • 888-475-2243

[www.cc-cycle.com](http://www.cc-cycle.com)

# January



ONLINE BIDDING POWERED BY proxibid

# SOUTHEAST IOWA STEPS



**More Sizes Available**

**For Sales & Service Please Call Chris At 641-919-6922**

**Check Us Out On Facebook**

**Steps • Stock & Custom Railings**



**2016 Polaris General 1000**  
Full Cab, Tip Out Glass Windows, Heater, Winch, LED Lights, 4x4

**NO DOC FEES!**

**\$14,995**

**C&C Cycle Chariton, IA • 888-475-2243 www.cc-cycle.com**

## Yoder's KOUNTRY KORNER Quilts & Gifts

We have a great selection of ...

### Cambridge Collection

in your choice of wood, stain color and hardware. This collection offers: bed, dresser, nightstand, lingerie chest, armoire, blanket chest, tv night chest and mirror.



21050 ICE AVENUE • BLOOMFIELD, IA 641-664-2545 V.M. • MON.-SAT. 9-5

## KOUNTRY KORNER Bakery



Bakery Hours: Fri. & Sat. 9 AM-5 PM

21050 Ice Avenue ~ Bloomfield, Iowa 52537 641-664-1747 v.m.

**FOR SALE:** Pillow Top Single Bed Has Mattress Cover, Black Frame Included, 1 Year Old, \$100. Iowa City, IA. 641-295-1396 1-1

**FREE HEAT & HOT WATER:** Eliminate Monthly Heating Bills w/Classic Outdoor Wood Furnace. No Sunday Calls. 660-707-3866 TFN



- Specializing In Pole Shed Packages
  - New Houses & Garages
  - Re-roofing w/ Metal Or Shingles
- Quality Comes First & Very Competitive!**



**641-898-2226**

## SCHWARTZ CONSTRUCTION

### PETS

**FOR SALE:** 1 Male Terrier Pup, Shots And Wormed, \$175. 641-895-4995 1-1

**FOR SALE:** Blue Heeler Pup, Male, All Shots, Color Blue And Black. 319-863-3786 1-8

**FOR SALE:** Hound Dog Tracking Outfit MN10 Receiver With Two Johnson Collars, \$300 OBO, Don't Use It Anymore. 319-931-8372 1-1

**FOR SALE:** Persian Cats And Kittens, Various Ages, Prices Vary. 641-895-5628 1-8

**PUPPIES, PUPPIES:** We Want to Buy Your Puppies! Registered or Mixed Breeds. We Have Homes Waiting for Them! 573-784-9866 TFN

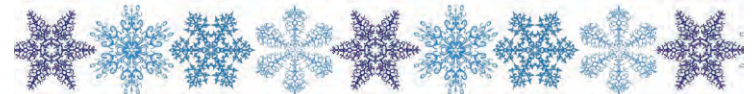


### Brand New Case IH 75A

12 Hours, Full Factory Warranty Till October 2022, Loader, Weights, Shuttle Shift, 12 Spd Trans

**\$34,000**

**641-675-3423**



## BEYOND SUPPLEMENTATION



# HE-20™

BETTER FORAGE UTILIZATION - EXTEND WINTER PASTURES  
IMPROVE GRAZING DISTRIBUTION

Available at:

# QUALITY PLUS FEEDS

2033 Locust Street, Saint Paul, IA 52657

(319) 469 - 3167 | www.qualityplusfeedinc.com

## KARS, INC OF PLEASANT HILL

[www.kars-inc.com](http://www.kars-inc.com)

5701 E. University • Pleasant Hill, IA

**515-564-0937**



**2007 Buick Lucerne CXL**  
3.8 V6, Auto, Leather, Full Power, 81K Miles \$8,995



**2015 Chevy Silverado K1500 LT**  
4WD, Crew Cab, 5.3 V8, Auto, Z71, Loaded, 122K \$25,995



**2013 Chevy Silverado K1500 Work Truck**  
4x4, 5.3 V8, Auto, Ext Cab, 4-Dr, Air, Tilt, Cruise \$13,995



**2016 Chevy Silverado K2500HD LT**  
4WD, Crew Cab, 6.0 V8, Auto, Loaded, Z71, Backup Camera, 84K \$36,995



**2016 Chevy Silverado K2500HD LT**  
4WD, Crew Cab, 6.0 V8, Auto, Full Power, Backup Camera, 72K \$33,995



**2015 Chevy Silverado K2500HD LT**  
4WD, Crew Cab, 6.0 V8, Auto, Full Power, Backup Camera, 150K \$23,995



**2011 Chevy Suburban K2500 LS**  
4WD, 6.0 V8, Auto, Full Power, 3rd Row Seating, Rear Air & Heat, 129K, \$19,995



**2009 Chevy Tahoe LT7**  
4WD, 5.3 V8, Auto, Loaded, Heated Leather, Full Power 3rd Row Seating, 127K, \$16,995



**2006 Chevy Tahoe**  
4WD, 5.3 V8, Auto, Loaded, Heated Leather, Sunroof, 3rd Row Seating, 137K, \$8,995



**AUCTION**  
**SATURDAY, JANUARY 9TH, 2021 AT 11:00 A.M.**  
 WEATHER DATE: 1/10/21 AT 12:00 NOON  
 FAIRGROUNDS COMMUNITY BUILDING - 1146 W. SUMMIT STREET • WINTERSSET, IOWA

**ANTIQUES & COLLECTIBLES:** Lots of old trunks, tools, Carpenter's and other boxes; Smiley Pig creamer; Glass ware; Blue band beater jar; Stoneware pitcher; Watt Ware pitcher; Brass bed; Small fan; Bluffs Run Piggy bank; Bear bank; St. Louis RR lantern; Rock Island Railroad lantern; Silverware; Funks G Hybrid Key toys; Madison County and other centennial coins; McCoy and Hall pieces; Large vases; Double-sided metal sign; Aladdin lamp base; Small toolboxes; R. Atkinson Fox and other prints; Texaco bucket; Rug beater; Sad irons; 3 lightning rods w/balls; Griswold and other cast iron items; 3 metal airplanes; 2 boxes of sports cards; Flats of jewelry, some gold and some sterling; Coca-Cola items; Pyrex and Fire King items; Pick axe; Flat bed trailer full of barn wood and more.

**MISCELLANEOUS:** Turkey cooker; Camp cookware kit; 2 dip nets; Coleman stove; Six gun locks; Field glasses; Ground target; Metal clay trap thrower; Minnow buckets; 4-gun gun rack; Fish cleaning rack w/knife; 22 snap caps & more.

**TERMS OF SALE:** ID is required to receive bid numbers. We accept cash and checks, no cards. We are not responsible in case of accident or theft. Thank you. LUNCH SERVED

**HARTMAN AUCTIONEERING**  
 Steve Hartman - Cell 515-468-7857, Home 515-462-4584  
[www.hartmanauktioneering.com](http://www.hartmanauktioneering.com)

**CASH PRICE**  
**MOBILE HOMES**  
 CALL  
**573-249-3333**  
[www.marktwainmobilehomes.com](http://www.marktwainmobilehomes.com)

**FOR SALE:** 160 Acres Mostly Tillable, 3 Miles East Of Powersville, MO. 608-572-2389 1-8

**FOR SALE:** Indianola Acreage Lots On R-57 And On 90th Ave., 1 Mile North Of Hwy. 92. Black Gold Realty. 515-681-6310 Or 515-402-9000 2-5

**INDIANOLA RENTALS:** 1, 2, And 3 BR Condos, Apartments, Also Offices Or Retail Space On Or Off The Square, Call Larry. 515-681-6310 Or 515-402-9000 2-5

**CORNING RENTAL** A Complete Line of Rental Equipment!



**806 Quincy St, Corning, IA Phone: 641-322-3801**  
 YOUR AUTHORIZED DEALER FOR M&M ENGINEERED TREE SHEARS & GRAPPLES

2 Virtual Online Iowa Auctions - Bid @ [www.SullivanAuctioneers.com](http://www.SullivanAuctioneers.com)

**DES MOINES COUNTY, IOWA** **287**  
Acres  
subject to survey  
4 Tracts

**LAND AUCTION**

**FRIDAY, JANUARY 29TH AT 10:00 A.M.**



The Ewinger Farms are located in Sections 16, 20 & 21, Pleasant Grove Township, Des Moines County, IA. (5 1/2 miles north of Danville, Iowa or 18 miles northwest of Burlington, Iowa.)

Make plans now for this upcoming Des Moines County, Iowa real estate auction that features land conveniently located north of Danville, Iowa. These diverse farms have it all including productive tillable farmland, awesome recreational acreage and CRP income. All tracts sell with full farming rights for the upcoming 2021 crop year. We look forward to your participation in this upcoming auction!

**Joan B. Ewinger Estate**

Scott Ewinger - Executor, Susan Ewinger & Nancy Foltz - Sellers  
 Representing Attorney: Mike Vance • Vance Law Office  
 101 N. Jefferson St., Mt Pleasant, IA 52641 • Phone: (319) 385-3736

**FOR ADDITIONAL INFO, CONTACT AUCTION MANAGERS:**  
 Jim Huff (319) 931-9292 • Jeff Hoyer (319) 759-4320

**APPANOOSE COUNTY, IOWA** **134.13**  
Taxable  
Acres  
1 Tract

**LAND AUCTION**

**FRIDAY, JANUARY 29TH AT 1:00 P.M.**



The Leffler Farm is located in Sections 29 & 30, Vermillion Township, Appanoose County, Iowa. (1 mile northeast of Centerville, Iowa.)

Make plans now for this upcoming Appanoose County, Iowa land auction. This farm offers productive tillable farmland and attractive recreational acreage. This parcel is conveniently located just east of the Centerville, Iowa hospital and features several desirable home building sites. This is an auction you will not want to miss!

**Chad Leffler - Seller**

Representing Attorney: Rick L. Lynch | Lynch Law  
 207 S Washington St, Bloomfield, IA 52537 | Phone (641) 664-3188

**AUCTION MANAGER: John Probasco (641) 856-7355**

**SULLIVAN AUCTIONEERS, LLC • TOLL FREE (844) 847-2161**  
[www.SullivanAuctioneers.com](http://www.SullivanAuctioneers.com) • IL Lic. #444000107

**CRP SEED MIXES!**  
 Looking for Very Careful Customer Driven Drill Operators  
 With Their Own Medium Size Tractors to Pull Our Seed Drills.

Our Seed Mix Labels (Tags) Specify "Genetic Origin"  
 & " Production Origin" and are Approved by Missouri NRCS Offices.

We've Been Harvesting Prairie Seed in Northern Missouri & Southern Iowa  
 and Providing Iowa and Missouri CRP Seed Mixes Since 1987

**OSENBAUGH'S PRAIRIE SEED FARMS**  
 CRP MIXES • WILDFLOWERS • PRAIRIE GRASSES

CALL 641-766-6790  
 641-340-0294  
[john@prairieseedsfarms.com](mailto:john@prairieseedsfarms.com)

**REAL ESTATE**

**LINCOLN HOMES SPRING SALE!** Quality Built Modular & Manufactured Home On Display. Factory Direct Prices With Free Set Up & Installation Within 100 Miles.

Lincoln Homes  
 Hwy 30  
 Ogden, IA 50212  
[lincolnhomesia.com](http://lincolnhomesia.com)  
 515-275-2717 TFN

**EMPLOYMENT**

**DRIVER WANTED:** Fulltime, Driving Work Crew, Great Pay. Call For More Information. 660-346-1037 1-15

**AG RELATED**

**FOR SALE:** Small Square Bales Of Hay, \$6.00 Each. 712-830-1426 1-8

**Save Some Trees! Read The Paper Online!**  
[www.hawkeyetrader.com](http://www.hawkeyetrader.com)

**2012 Harley Tri-Glide Only 86K, Super Clean & Super Nice!**



**NO DOC FEES!** **\$14,995**

C&C Cycle  
 Chariton, IA • 888-475-2243  
[www.cc-cycle.com](http://www.cc-cycle.com)

**Slayton POLARIS**  
 ROUTE 2 BOX 124A, BLOOMFIELD, IA 52537  
[slaytonpolaris.com](http://slaytonpolaris.com)  
**660-328-6627**

**\*AG ADVANTAGE PROGRAM EXTENDED**  
 10% OFF 2020 RANGERS FOR FARMERS

2020 POLARIS RANGER 1000  
 CALL DEAN OR TIM FOR SPECIAL PRICING!



**Happy New Year**  
 to All Our Valued Customers and Friends.  
 We Appreciate the Opportunity to Serve You.  
 Open New Year's Eve Till Noon & Closed New Year's Day.  
 We Will Re-Open Monday, January 4th.

Post & Pole Frame Buildings

**Horizon BUILDINGS**

Specializing in:  
 Post Frame Buildings (Up to 100' Wide Clear Span)  
 Agricultural • Commercial  
 Residential • Equine  
 Heat Formed Metal Roofing & Siding  
**With 50 Year Warranty**

Quality Workmanship  
 Best Quality Material



Everlast Roofing, Inc.  
OUR NAME SAYS IT ALL

2 Miles N. of Drakesville on pavement  
 888-371-4710 • 641-722-3505  
 17549 Husky Trail Drakesville, IA 52552



**ANGELA WOOD**  
Missouri: Linn, Livingston, Mercer, Daviess,  
Grundy, Dekalb & Harrison Counties  
**660-216-0724**

**BRITTANY HOPKINS**  
Iowa: Davis, Wapello, Monroe  
& Mahaska (Oskaloosa) Counties  
**641-208-7555**

**KATIE MITCHELL**  
Iowa: Des Moines, Henry, Jefferson, Lee, Louisa,  
Keokuk, Washington & Van Buren Counties.  
In Illinois: Hancock & Henderson Counties  
**319-470-0251**

**LADD MONTEGNA**  
Iowa: Appanoose, Polk, Jasper, Mahaska,  
Marion & Lucas Counties  
**641-891-7254**



**STAN MASON**  
Iowa: Polk, Dallas, Guthrie, Audubon, Cass,  
Adair, Madison, Warren, Montgomery,  
Adams, Union, Clarke, Lucas, Page, Taylor,  
Ringgold, Wayne & Decatur Counties  
**515-205-0921**

**WENDY HOPKINS**  
Missouri: Adair, Putnam,  
Scotland & Schuyler Counties  
**641-777-9139**

**HAWKIE**  
Facebook  
Iowa: Boone, Greene, Grundy, Hamilton,  
Hardin, Marshall, Polk, Story, Tama  
& Webster Counties  
**641-675-3971**

**We Go Along Way To Serve You!**  
**Call One of Our Friendly Helpful Sales Reps!!**

**Visit Our Website:**

**[www.hawkeyetrader.com](http://www.hawkeyetrader.com)**

**YOUR**  
**TRADER**

## REAL ESTATE AUCTION

### SATURDAY, JANUARY 9, 2021 10:00 AM

SALE TO BE CONDUCTED AT THE PROPERTY LOCATED  
**1323 N. WAPELLO, OTTUMWA, IOWA**  
 Just North of the intersection of N. Wapello & Park Ave.

**REAL ESTATE:** This property consists of a 1-story, 3-bedroom dwelling, with large living room, formal dining area, updated kitchen & 1-1/2 baths. This home has a full basement with gas forced-air heat & central air. This home has been recently remodeled and updated and would make an excellent family home, in a superb North location.

**TERMS:** 20% down day of sale, balance in cash upon delivery of a Court Officer Deed, accompanied by Abstract of Title showing merchantable title. Real estate taxes will be pro-rated to possession date, possession given upon settlement.

**REAL ESTATE WILL SELL AT 12:00 NOON**

For further particulars or an appointment to inspect the property, please call the auction company: 641-682-5465.

*Announcements made day of sale take precedence over any advertising.*

**TRACY S. REED ESTATE, OWNER**  
 Lori Bain, Executor      Box & Box, Attorneys

---

**AL MARTIN REAL ESTATE & AUCTION CO., INC.**  
 307 Church Street • Ottumwa, Iowa  
**641-682-5465**

Find us on Facebook at Al Martin Real Estate Co      [www.almartinauctions.com](http://www.almartinauctions.com)

**FOR SALE:** John Deere 4230 Tractor, 9000 Hrs, Iowa Tractor, Turbo, Clean Inside/Out, Loader Available, \$18,950.  
 573-881-3557      1-1

**FOR SALE:** John Deere 2940 Tractor, CAH, HiLo, Estate Tractor, 5300 Hrs., Set For Many Years, Shifting Cables Stiff, New Rubber, \$13,500.  
 573-881-3557      1-1

**AUTOMOTIVE**  
**FOR SALE:** Chilton Motor Age Flat Rate And Service Manual, Year 1950, \$150.  
 641-672-2005      1-8

**WANT TO BUY:** Small Square Baler. Call Any Time.  
 515-835-1153      1-1

**FOR SALE:** New 3 Pt. Tillers, Heavy Duty, Gear Driven, 7 Ft to 10 Ft, Starting at \$2,650.  
 660-874-4455      1-28-21

**FOR SALE:** 1950 GMC 248 Inch Truck Eng. Complete, Runs Good, With 4 Sp. Trans. \$600.  
 217-882-8301      1-1

**FOR SALE:** John Deere 4240 Tractor, 1982, CAH, QR, 9926 Hrs., One Owner, Ft. Fenders, Extra Lights/Mirror, 95% Firestone Factory Duals, Real Sharp, \$26,500.  
 573-881-3557      1-1

**FOR SALE:** 2-John Deere 4020 D Tractor, 1970, One Owner, Good Sheet Metal, Poor Paint, 10,000 Hrs., Or John Deere 4020 D Tractor, 1968, 6000 Hrs., With Great Bend QT Loader, Will Trade, \$12,500 Choice.  
 573-881-3557      1-1

**FOR SALE:** 2011 Ford F250 Lariat FX4, 6.7L, 108K Miles, Black, Clean Truck, Salvage Title, \$30,500.  
 660-216-0084      1-1

**FOR SALE:** Nice Small Squares Alfalfa Hay 1st, 2nd, 3rd Cuttings. Also, Shredded Cornstalks In Small Squares. Stop In For All Your Winter Hay Needs. 2 Miles North Of Caseys.  
 Emery Miller  
 20843 200th St.  
 Sigourney, IA      1-1

**FOR SALE:** Cattlemen New Heavy Iron Corral Panels, \$60. We Also Have Accessories! Free Replacement If Anything Gets Damaged.  
 816-507-3116 Or  
 816-898-0234      1-1-21

**FOR SALE:** 238 Detroit Diesel, Low Hours With 115 KW Generator, Power Switch Panel And Battery Charger, \$1,850 OBO.  
 319-330-9729      1-1

**FOR SALE:** Certified Organic Big Bales Grass Hay, 4x5 1/2 Net Wrap, Baled New McHale Baler, \$50 Each.  
 573-253-6188      1-1

**FOR SALE:** 24 Ft x 5 Ft Free-Standing Cattle Panels, Weighing 600 Lbs Each, Fastener Chains Included. Located in Troy, IA.  
 641-680-0892      TFN

**ATTN TRUCK OWNERS:** Rhino Linings Offers You The Worlds Number One Sprayed In Truck Bedliner. Also Works On Livestock Tanks, Creep Feeders, Horse Trailers, Etc. Call For An Appointment & More Info.  
 641-799-5672      TFN



**2019 Yamaha Wolverine X2 Special Edition, 4x4, Tilt Out Windshield, Winch, Only 50 Hrs**

**NO DOC FEES!**      **\$12,495**

**C&C Cycle**  
 Chariton, IA • 888-475-2243  
[www.cc-cycle.com](http://www.cc-cycle.com)

**LIVESTOCK**  
**FOR SALE:** Healthy Small Farm Raised Meats, Pork, Beef, Chicken, No GMO's Fed, Butchered USDA, Free Delivery To KC, MO. Call Tom.  
 660-358-2650      1-8

**LOOKING TO BUY:** Horses, Tack, Saddles, Horse Trailers, Etc. Cash In Hand, Call Wyatt.  
 618-535-9966      1-1

**BULLS FOR LEASE:** Over 70 Registered Angus & Hereford To Choose From. 90 Day Lease \$900. Trucking Available At Extra Charge. Kingdom City, MO.  
 573-999-3197      TFN

**FOR SALE:** Stainless Steel Pig Nursery Feeders; Plastic Pig Nursery Slats; Stainless Steel Pig Nipple Water Pipe; 24 Inch Stainless Steel Mahaska Industry Fan.  
 641-660-3051      1-1

**EXPECTING 1400 HEAD!!!**

Start Selling Bred Cows 3:30 p.m.

## OSBORN LIVESTOCK AUCTION

Located 7 miles West of Cameron on HWY. 36, OSBORN, MO

**Barn Phone: (816) 675-2424**

Danny **(816) 649-8485**

Transportation and Order Buying Available • Bonded • Insured

**SALE EVERY FRIDAY**

## NEXT SALE MONDAY, JAN. 4<sup>TH</sup> 11:00 a.m.

Due to New Years being on Friday the sale will be on the following Monday Jan. 4th. The barn is open any day for cattle.

STEERS		HEIFERS	
300#.....	\$1.90	.....	\$1.64
400#.....	\$1.77	.....	\$1.55
500#.....	\$1.72	.....	\$1.50
600#.....	\$1.49	.....	\$1.36
700#.....	\$1.41	.....	\$1.31
800#.....	\$1.33	.....	\$1.27
900#.....	\$1.22	.....	\$1.20
1000#.....	\$1.15	.....	\$1.10
1100# Fats.....	\$1.07	.....	\$1.03

Top Cow \$0.61 - Union Star      Holsteins \$0.48-\$0.69  
 Top Bull \$0.83 - Trenton      Longhorn X & Dairy X \$0.70-\$1.12

**Buying Butcher Cows & Horses Daily We Have 9 Butcher Cow Plants Represented**

**RECEIVING HOURS:** Daily until sale time

Owner, Jayme Walker 816-665-4277      Frank Peterson, Fieldman 660-247-2306  
 Randy Vanderkooi, Fieldman 816-632-0694      Dale Coble, Fieldman 816-213-3581  
 Ivan Kanak, Fieldman 816-724-1043      Brandon Eichied, Fieldman 660-973-3044



**2017 Harley Tri-Glide Excellent Condition! Only 3,000 Miles**

**NO DOC FEES!**      **\$27,995**

**C&C Cycle**  
 Chariton, IA • 888-475-2243  
[www.cc-cycle.com](http://www.cc-cycle.com)

## ANOTHER HILPIPRE AUCTION SHERIFF REPOSSESSION

### TUES., JAN. 19 - 10:00 AM

**610 G AVE WEST - OSKALOOSA, IA 52577**  
**OFFERING BOTH LIVE ONSITE AND LIVE WEBCAST BIDDING**

**AUCTIONEER NOTE:** This is a sheriff repossession from a concrete contractor: Includes: Forms; Tools; Skidsteer; Trailers; Other like items. All attendees must wear face mask and practice social distancing.

**(Approx. 700) WALL-TITE FORMS and accessories / CONCRETE EQUIP.:** Saws; Packer; Tampo; Screens; Other / **General SHOP EQUIPMENT & TOOLS including Snap-On tool chest and tools / Bobcat S770 SKIDLOADER / Ford F350 PICKUP / (5) TRAILERS:** Enclosed; Form trailers; Flatbed / ATTACHMENTS / Other.

See our website for term and details - [www.hilpipre.com](http://www.hilpipre.com)

## HILPIPRE AUCTION CO.

Waterloo, IA  
 PH: 319-235-6007 or MERV'S CELL: 319-415-0816

**MISC**  
**LOOKING TO LIQUIDATE OR DID YOU JUST INHERIT STUFF:** Let Me Help. On-Site Tag Sale Services. Personal Property And Collectible Consultation. Also Seeking Baseball Cards, Furniture, Comic Books, The Unusual, And Anything Of Value. Before Throwing Out Your Potentially Valuable Items, Contact Me. CAGA Certified. Nathan Lilley.  
 573-253-4159      TFN

**FOR SALE:** Boxwood Wood Stove Cast Iron Vogelzang Model BX42E, Good Shape, \$150 OBO.  
 319-931-8372      1-1

**PETS**  
**FOR SALE:** 1 Male Terrier Pup, Shots And Wormed, \$175.  
 641-895-4995      1-1

**FOR SALE:** Pillow Top Single Bed Has Mattress Cover, Black Frame Included, 1 Year Old, \$100.  
 Iowa City, IA.  
 641-295-1396      1-1

**FOR SALE:** Blue Heeler Pup, Male, All Shots, Color Blue And Black.  
 319-863-3786      1-8

**BUYER OF STANDING TIMBER:** Walnut & Soft Maple Are Our Specialty; Also Other Species. Bonded & in Business for 30 Years. We Pay Before Cutting. Gingerich Sawmill LLC, Bloomfield, IA.  
 641-722-3002      1-1

**FOR SALE:** Hound Dog Tracking Outfit MN10 Receiver With Two Johnson Collars, \$300 OBO, Don't Use It Anymore.  
 319-931-8372      1-1

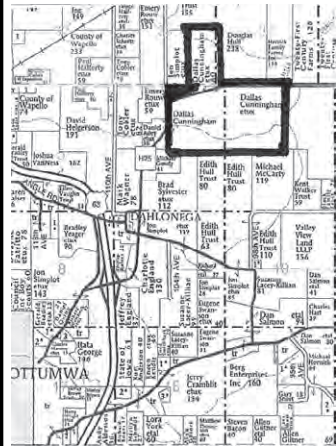
**FREE HEAT & HOT WATER:** Eliminate Monthly Heating Bills w/Classic Outdoor Wood Furnace. No Sunday Calls.  
 660-707-3866      TFN

**PUPPIES, PUPPIES:** We Want to Buy Your Puppies! Registered or Mixed Breeds. We Have Homes Waiting for Them!  
 573-784-9866      TFN

## 430 ACRES M/L - LAND AUCTION

### SATURDAY, JANUARY 23, 2021 10:00 AM

SALE TO BE CONDUCTED AT THE  
**AGENCY COMMUNITY CENTER**  
**AGENCY, IOWA**



**TRACT I - 85 Acres m/l** located in Section 33, Highland Township, North of Dahlonga Road. 75.81 Acres tillable. This is bare land, with an average CSR-2 rating of 66.8, with predominant soil types of Haig, Grundy and Redina. There are no improvements to this tract, which is located 3 miles west of the intersection of Agency-Hedrick Road & Dahlonga Road or 2-1/2 miles northeast of Ottumwa, Wapello County, Iowa. Full possession on closing.

**TRACT II - 345 Acres m/l** (Across the road from Tract I): Improvements on the property consist of a 52'x108' machine shed; approx. 30,000-bushel grain storage; 45'x60' open-front machine shed; 3-20'x80' Harvestores; and an older 56'x60' barn & hog building. Approximately 290 Acres of this farm are currently enrolled in the Conservation Reserve Program, with contracts expiring in 2025 & 2026, with an annual payment of approximately \$65,650.00 per year. This farm has excellent upland and productive creek bottom, with a high rate of return for the owner of this property.

**Tracts I & II will sell individually and will not be combined.**

**TERMS:** 20% down day of sale, balance in cash upon delivery of a Court Officer Deed, accompanied by Abstract of Title showing merchantable title. Real estate taxes will be pro-rated to January 1, 2021. CRP payment pro-rated to recording date of deed by Farm Service Agency. Possession upon closing.

**REAL ESTATE WILL SELL AT 10:00 AM**

For further particulars or an appointment to inspect the property, please call the auction company: 641-682-5465.

*Announcements made day of sale take precedence over any advertising.*

**NANCY M. CUNNINGHAM ESTATE, OWNER**  
 Cathie Mosier & Les Cunningham, Co-Executors      Box & Box, Attorneys

---

**AL MARTIN REAL ESTATE & AUCTION CO., INC.**  
 307 Church Street • Ottumwa, Iowa  
**641-682-5465**

Find us on Facebook at Al Martin Real Estate Co      [www.almartinauctions.com](http://www.almartinauctions.com)

## TAMA LIVESTOCK AUCTION

### 641-484-3465

**Fed Cattle, Slaughter Cows & Bulls**  
**Every Wednesday at 9:00 am**

---

## SPECIAL CATTLE SALE

**Monday, January 4, 2021 - 11:00 AM**

## SPECIAL PRE-CONDITIONED CATTLE SALE

**Friday, January 8, 2021 - 11:00 AM**  
**Friday, January 15, 2021 - 11:00 AM**

## SPECIAL BRED COW/HFR & FEEDERS SALE

**Monday, January 11, 2021 - 11:00 AM**

For Markets & Listings go to  
[www.tamalivestock.com](http://www.tamalivestock.com)

**TEUBEL SALVAGE**  
19387 ICE AVE • BLOOMFIELD, IA 52537  
**641-799-8371**

**FOR SALE**

- 5.9 Cummins Out of Case 2096, 6800 Hrs
- Case 540 Engine Out of 2090
- IH 414 T Engine
- Perkins 318 Engine, Will Fit MF 1080 & 1085
- 2-28Lx26 12 Ply Titan Rice Tires, 3 Yrs Old, on IH 10 Bolt Rims
- 2-18.4x34 Firestone Tires, 25% Tread, Solid
- Year Round Cabs, 1 For JD 4020, 1 For IH 806-1466
- 3 Pt Hitch Backhoe w/Pump
- 2-23.1x26 Reg Tires on JD 8 Bolt Rims
- New Allied 795 Loader, 7 Ft Bucket w/IH 86 Series Mounts
- Westendorf WL-21 Loader w/Quick Attach Brackets for 300-656 IH
- IH 370 10 Ft Disk, Sharp!
- Easy Trail Header Wagon, Will Hold Up to 22 Ft Head
- Large Wood Furnace, \$450
- 2-18.4x30 Tires on 8 Bolt Ag HD Rims

**Parting Out**

- AC 7000 & 7030 & 8010
- Case 2090 & 2096
- JD 4020D

**ZIMMERMAN'S STORE**  
Main Street • Rutledge, MO • 660-883-5766

**End of Sale Fabric Sale December 26-31**  
10% Off All Fabrics & Sewing Notions  
Same 20% & Same 50% Off Fabrics  
Empty a Bolt with 5 Yards or Less & Get 20% Off

**Special - 15% Off SALE**  
From Now to Jan 31st or While Supplies Last  
All Natural Vitality Calm Products - Powder & Gummies  
Rainbow Light Counter Attack - Immune Response - Gummy Vitamin C  
Renew Life Baby Probiotic & Kid's Gentle Constipation Relief  
Neo Cell Super Collagen Powder, 7 Oz

**Specials**

26 Oz Condensed Cream of Mushroom Soup .....	\$1.49
20 Oz Great Value Ketchup .....	89¢
Frozen Bun Size Beef Franks.....	15 Oz \$1.15.....Case of 12 \$11.70
Frozen Organic Strawberries, 30 Lbs.....	\$33.29
Graham Crackers, 14.4 Oz.....	85¢.....Case of 12 \$8.79

*We Will be Closed December 27th*

Where Quality Comes First  
Are You Thinking About A Building? Bring Your Size And We'll Give You A FREE Price Quote!  
WE WILL ENGINEER YOUR TRUSSES TO YOUR SPECS

**BUILDING PACKAGES (TAXES INCLUDED) SERVING THE TRI-STATE AREA SINCE 1992**

**Call For Pricing On Building Packages!**

**- WE WILL DELIVER - FREE ESTIMATES ON ALL BUILDINGS WE MANUFACTURE STEEL ROOFING, SIDING AND TRIM, CUT TO THE INCH.**

**BUY DIRECT AND SAVE!**

**BUILD IT YOURSELF OR HAVE ONE OF OUR PROFESSIONAL CONTRACTORS DO IT FOR YOU.**

**4 MILES SE OF REVERE, MO OR 6 MILES NW OF WAYLAND ON C. 26758 HWY C., ALEXANDRIA, MO 63430**

**WAGLER METALS Missouri Warehouse**  
MON.-FRI. 7AM-5PM SAT. 7AM-2PM

**FOR SALE:** Persian Cats And Kittens, Various Ages, Prices Vary.  
641-895-5628 1-8

**LINCOLN HOMES SPRING SALE!** Quality Built Modular & Manufactured Home On Display. Factory Direct Prices With Free Set Up & Installation Within 100 Miles.  
Lincoln Homes Hwy 30 Ogdan, IA 50212 lincolnhomesia.com 515-275-2717 TFN

**FOR SALE:** 160 Acres Mostly Tillable, 3 Miles East Of Powersville, MO.  
608-572-2389 1-8

**FOR SALE:** Indianola Acreage Lots On R-57 And On 90th Ave., 1 Mile North Of Hwy. 92. Black Gold Realty.  
515-681-6310 Or 515-402-9000 2-5

**REAL ESTATE**  
**INDIANOLA RENTALS:** 1, 2, And 3 BR Condos, Apartments, Also Offices Or Retail Space On Or Off The Square, Call Larry.  
515-681-6310 Or 515-402-9000 2-5



**GINGERICH SAWMILL, INC.**  
Buyers of standing timber. Walnut & soft Maple (our specialty), also other species. Bonded.  
**30 Years In Business**

**WE PAY BEFORE CUTTING**  
BLOOMFIELD, IA • 641-722-3002

**2014 Harley Limited**  
Highway Pegs, Heated Grips, Exhaust Pipes, Only 18K Miles, Detachable Tour Pack

**NO DOC FEES!** **\$15,495**

**C&C Cycle**  
Chariton, IA • 888-475-2243  
[www.cc-cycle.com](http://www.cc-cycle.com)

**OBERHOLTZER TRAILER REPAIR**  
Specializing in Aluminum Hopper Trailers • Repair & Rebuild  
**We Install Tarps & Power Tarps**  
Timpte & Wilson Trailer Parts Available  
**660-341-6027 • 660-282-1012**  
3 Miles East of Gorin, MO on Route U

**CUSTOM BUILT PAINTED & VINYL BUILDING & SHEDS**  
Many Styles & Optional Features Available  
**FREE DELIVERY WITHIN 30 MILES**

**Hillview Mini Barns**  
David W. Schrock  
VM: 641-664-2842  
15383 180th St Drakesville, IA

**Happy New Year!**

**D & C CUSTOM FENCING**

**We Sell Only the Best Products And Can Meet All Your Fencing & Livestock Equipment Needs**

*Pipe Fencing & Pipe Corrals Woven • Barb • Pipe Lot Fences Installation & Delivery Available*

**We Can Custom Make Anything.....Any Size!**

**Donald Gordon • 641-799-4859**

**Safe & Durable!**  
**Built With All New SCH 40 Prime Pipe**

**Fence Line Life Time Pipe Bunk**  
24" Tall x 20' Long  
1200lbs  
Cattle Don't Knock Them Over Or Shove Them Around

**Free Standing Cattle Panel**  
5 1/2' Tall x 20' Long  
Made From New 2 7/8" Sch 40 Pipe And 1 1/4" New Pipe. Panels Stand Up alone And Work Well For Corrals In Pasture. Extra Cattle Pens And Sorting Yards. Also Have Cattle Gate To Go On One End.

**Heavy Duty Bale Feeder With Gate**  
Over 800 lbs.  
Saves Money, Feed Up To 30% Less Hay Per year

**Double Bale Feeder Heavy Duty With Basket**

- Continuous Fence Panels
- Corral Panels
- Heavy Duty Easy Locking & Unlocking Gate Latches
- In Line Fence Crossing For ATV's & UTV's

**Ottumwa, Iowa**

**Hertz Real Estate Services**  
Washington, IA 319-382-3343  
[www.Hertz.ag](http://www.Hertz.ag)

- Public Auctions
- Appraisals
- Real Estate Listings
- Farm Management

**FARMS FOR SALE**

**LISTINGS**

**Louisa Co. - 158.0 ac** Productive farm located 22 miles south of Iowa City. CSR2 of 70.7 on the eff. crop acres. Open lease for the 2021 crop year. **SALE PENDING!**

**Louisa Co. - 56.50 ac** located 30 miles south of Iowa City. Incredible hunting and recreation opportunities. **SALE PENDING!**

**Washington Co. - 63.0 ac** located north of Ainsworth on a hard-surface road. Potential building site. Open lease for 2021 crop year.

**Appanoose Co. - 1,180.0 ac - Offered in 8 Parcels** located 2 miles north of Numa, IA. Listings from 39.10 to 282.00 acres m/l. Cropland, hay, pasture, timber, house, outbuildings & ponds. Open lease for 2021 crop year.

**PUBLIC AUCTION**

**Henry & Lee Co. - 160.04 ac** In a single parcel, located 5 miles NE of Houghton. CSR2 of 70.7 on the cropland acres. **SOLD! \$8,000/acre**

**Adam Sylvester** Accredited Farm Manager  
**Rachelle Heller** Accredited Land Consultant

*\*All Acres are 'More or Less' unless noted  
Serving the Midwest for over 74 years.*

# LANDPROZ

## IOWA FARMS FOR SALE

For more details and a full list of land for sale visit our website

Cropland / Hunting Properties / Live & Online Land Auctions

- |                |   |                |   |                |   |
|----------------|---|----------------|---|----------------|---|
| <b>LISTING</b> | <b>123 Acres+/- Taylor Co., IA</b> PRICE REDUCED - Section 30 of Dallas Twp - Timber, CRP and Hay Ground - Building Site <b>\$3,980/acre ID #1863</b>   | <b>SOLD</b>    | <b>253 Acres+/- Lee Co., IA</b> Section 16 and 21 of West Point Twp - Established Food Plots and Trails - Stocked Ponds - Tillable/CRP <b>SOLD ID #1714</b> | <b>PENDING</b> | <b>667 Acres+/- Appanoose Co., IA</b> Top end hunting farm with income. 142 acres tillable, 150 CRP, thick timber, established food plots. <b>PENDING ID #1874</b>        |
| <b>LISTING</b> | <b>80 Acres+/- Lee Co., IA</b> Cabin, Hardwoods and established food plots. Turn key and ready to hunt! <b>NEW LISTING ID #1917</b>                     | <b>LISTING</b> | <b>199 Acres+/- Bremer Co., IA</b> Section 16 of Washington Twp - Cropland in an Excellent Farming Area - South of Waverly <b>PENDING ID #1846</b>          | <b>LISTING</b> | <b>40 Acres+/- Allamakee Co., IA</b> Thriving bed and breakfast, 28 tillable acres. Near Postville. <b>NEW LISTING ID# 1908</b>   |
| <b>LISTING</b> | <b>110.59 Acres+/- Wright Co., IA</b> Section 2 of Grant Twp & Section 36 of Belmond Twp - Flat Tillable Land - CRP Income <b>\$7,000/acre ID #1796</b> | <b>PENDING</b> | <b>71.82 Acres+/- Butler Co., IA</b> Section 4 of Fremont Twp - Productive cropland with tile and natural drainage <b>PENDING ID #1845</b>                  | <b>PENDING</b> | <b>95 Acre+/- Wayne Co., IA</b> Section 5 of Grand River Twp. 2 Bedroom Furnished Cabin. CRP for Income. North of Lineville. <b>PENDING ID #1840</b>                      |
| <b>PENDING</b> | <b>36.23 Acrest+/- Davis Co., IA</b> PRICE REDUCED Section 22 of Union Twp - Smaller Hunting Tract - CRP and Hay Income <b>PENDING ID #1821</b>         | <b>PENDING</b> | <b>38.39 Acres+/- Floyd Co., IA</b> Section 10 of St. Charles E Twp - Well Maintained Cropland - New Waterways - System Tiled <b>PENDING ID #1858</b>       | <b>SOLD</b>    | <b>62 Acres +/- Monona Co., IA</b> Section 21 of Franklin Twp - \$12,036 in Annual CRP Income on 48 acres. Great hunting for waterfowl and pheasants <b>SOLD ID #1612</b> |
| <b>SOLD</b>    | <b>40 Acres+/- Keokuk Co., IA</b> Section 17 of Sigourney Twp - Wide variety of Habitat - Marketable Timber and Tillable <b>SOLD ID #1837</b>           | <b>SOLD</b>    | <b>154 Acres+/- Page Co., IA</b> Section 23 of Amity Twp - Excellent hunting farm with over \$21K in annual income! <b>SOLD ID #1649</b>                    | <b>SOLD</b>    | <b>152 Acres+/- Union Co., IA</b> Section 27 of New Hope Twp - 136 acres of tillable - Great access - SW of Des Moines, W of Osceola <b>SOLD ID #1579</b>                 |



**Beau Jensen**  
MN & IA  
Land Broker  
507-402-0553

beaujensen@landproz.com



**Eric Kline**  
Southwest Iowa  
Land Agent  
515-450-2856

erickline@landproz.com



**Scott Powers**  
Southern Iowa  
Land Agent  
515-480-3008

scottpowers@landproz.com



**Tyler Horbach**  
Central Iowa  
Land Agent  
515-370-4627

tylerhorbach@landproz.com



**Tyler Tisue**  
Southeast Iowa  
Land Agent  
563-370-0866

tylertisue@landproz.com

**GO WITH THE PROZ**

Over 186,700 Acres SOLD in the Midwest

**LANDPROZ.COM**

Broker Brian Haugen - MN, SD, IA, WI, IL, KS • Broker Auctioneer Beau Jensen - MN, IA - 24-108 • Broker Auctioneer Greg Jensen - MN, IA - 24-21 • Broker Glen Salow - IA • Broker Chad Stavnes - MN • Broker Amy Willett - MO • Broker Tim Young - OH • Broker Andrew Fansler - IN  
LandProz Real Estate, LLC • 111 East Clark Street, Albert Lea, MN 56007

# SAM'S AUTO SALES

## 319-204-5214

[www.samsautosalesia.com](http://www.samsautosalesia.com)

Please See Our Website for Our Repairable Vehicles!

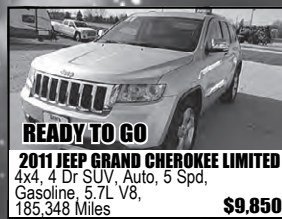


**READY TO GO**

### 2018 GMC SIERRA 1500 SLT

4x4, 4 Dr Crew Cab, 5.8 Ft SB, Auto, 8 Spd 5.3L V8, 82,051 Miles

**\$34,400**



**READY TO GO**

**2011 JEEP GRAND CHEROKEE LIMITED**  
4x4, 4 Dr SUV, Auto, 5 Spd, Gasoline, 5.7L V8, 185,348 Miles

**\$9,850**



**READY TO GO**

**2013 CHEVROLET SILVERADO 1500 LT**  
4x4, 2 Dr Regular Cab, 6.5 Ft SB, 4.8L V8, Flex Fuel, Auto, 4 Spd, 42,228 Miles

**\$20,000**



**READY TO GO**

**2014 JEEP GRAND CHEROKEE LIMITED**  
4x4, 4 Dr SUV, Auto, 8 Spd, Gas, 3.6L V8, 84,200 Miles

**\$15,300**



**READY TO GO**

### 2019 CHEVROLET SILVERADO 1500 LT

4x4, 4 Dr Crew Cab, 5.8 Ft SB, Auto, 8 Spd, 5.3L V8, Gas, 17,339 Miles

**\$36,500**



**READY TO GO**

**2008 JEEP LIBERTY LIMITED**  
4x4, 4 Dr SUV, Auto, 4 Spd, 3.7L V6, Gas, 157,000 Miles

**\$6,000**

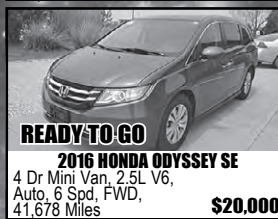


**READY TO GO**

### 2020 CHEVROLET MALIBU LT

4 Dr Sedan, FWD, 1.5L Turbocharger, Gas, 11,251 Miles, Clean Title

**\$19,800**



**READY TO GO**

**2016 GMC SIERRA 1500**  
4x4, 2 Dr Regular Cab, 8 Ft LB, Auto, 6 Spd, Flex Fuel, 4.3L V6, 47,287 Miles

**\$16,800**



**READY TO GO**

**2016 HONDA ODYSSEY SE**  
4 Dr Mini Van, 2.5L V6, Auto, 6 Spd, FWD, 41,678 Miles

**\$20,000**



**READY TO GO**

**2015 CHEVROLET IMPALA LT**  
4 Dr Sedan w/2LT, Auto, 6 Spd, Flex Fuel, 3.6L V6, 71,033 Miles

**\$12,000**

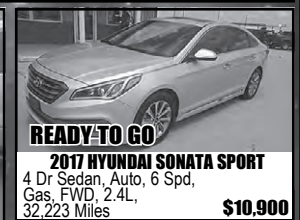


**READY TO GO**

### 2019 CHEVROLET COLORADO

4x4, 4 Dr Crew Cab, 5 Ft SB, Auto, 8 Sd, Gas, 3.6L V6, 22,141 Miles

**\$23,800**



**READY TO GO**

**2017 HYUNDAI SONATA SPORT**  
4 Dr Sedan, Auto, 6 Spd, Gas, FWD, 2.4L, 32,223 Miles

**\$10,900**



**READY TO GO**

**2014 DODGE RAM 1500 TRADESMAN**  
4x4, 4 Dr Crew Cab, 5.5 Ft SB, Gas, 5.7L V8, 131,426 Miles

**\$19,800**



**READY TO GO**

**2018 TOYOTA HIGHLANDER SE**  
AWD, 4 Dr SUV, Auto, 8 Spd, Gas, 3.5L V6, 80,893 Miles

**\$23,800**



**READY TO GO**

**2018 POLARIS GENERAL 1000**  
with Ride Command 328.9 Miles

**\$15,500**

**Mt. Pleasant, IA • 803 East Winfield Ave • NOT RESPONSIBLE FOR TYPOGRAPHICAL ERRORS**

## REAL ESTATE AUCTION

### SATURDAY, JANUARY 9, 2021 10:00 AM

SALE TO BE CONDUCTED AT THE PROPERTY LOCATED  
6602 ASHLAND ROAD, AGENCY, IOWA

**REAL ESTATE:** Ranch-style, 3-bedroom home, large kitchen, full bath, basement, gas forced-air heat, with over 1,040 square feet on foundation, with updated septic system. Detached single-car garage. All setting on one acre, in Cardinal School District. This home is a handyman special.

**TERMS:** 20% down day of sale, balance in cash upon delivery of a Court Officer Deed, accompanied by Abstract of Title showing merchantable title. Real estate taxes will be pro-rated to possession date, possession given upon settlement.

**REAL ESTATE WILL SELL AT 10:00 AM**

For further particulars or an appointment to inspect the property, please call the auction company:  
641-682-5465.

*Announcements made day of sale take precedence over any advertising.*

**VEHICLES:** 2003 Ford F-150 PU, V8, auto; 1985 Chev. G20 sport van, conversion, V8, auto, non-running. **Vehicles will sell immediately following the real estate.**

**KENNETH HARWOOD ESTATE, OWNER**  
Roy Harwood, Executor    Box & Box, Attorneys

---

**AL MARTIN REAL ESTATE & AUCTION CO., INC.**  
307 Church Street • Ottumwa, Iowa  
**641-682-5465**

Find us on Facebook at Al Martin Real Estate Co    [www.almartinauctions.com](http://www.almartinauctions.com)

Virtual Online Auction - Bid @ [www.SullivanAuctioneers.com](http://www.SullivanAuctioneers.com)

## LEWIS COUNTY, MISSOURI AIRPORT FACILITY

### FRIDAY, JANUARY 22<sup>ND</sup> AT 10:00 A.M.

Auction to be conducted as a virtual, online only auction. No on-site bidding permitted.  
If you need assistance with internet bidding, please contact our office at (844) 847-2161. Thank you.



**Sharpe Farms Airport Auction**

**OPEN HOUSE:**  
SAT., JANUARY 9 • 11 AM - 1 PM



Tract includes a 4360' x 65' concrete runway, 120' x 120' hanger, 60' x 60' hanger and a 20' x 60' office complex situated on 56± acres (subject to survey) in Section 2, T60N • R9W, Lewis County, MO.

The state-of-the-art 120' x 120' hanger includes electric sliding doors with 27' height, individual door panels store along interior side walls. Hanger includes infrared heating, polymer floors, pilots lounge, main office, secondary office, full bath, utility room as well as a conference room. Older 60' x 60' hanger includes full length bi-fold door, inner office and bathroom. Airport has UST dual tank for Jet-A jet fuel and/or AV-Gas for small planes, 2 fuel dispensers with fuel system in accordance with PST certification.

## SHARPE HOLDINGS INC.

Closing & Title Work By: Oak Hills Title Co.  
307 Lewis Street | Canton, MO 63435 | Ph: 573-288-4461

**AUCTION MANAGER: Bill Fretwell (660) 341-7735**

**SULLIVAN AUCTIONEERS, LLC • TOLL FREE (844) 847-2161**  
[www.SullivanAuctioneers.com](http://www.SullivanAuctioneers.com) • IL Lic. #444000107

## New Harleys

3.29% For 66 Months  
And \$0 Down With  
Qualified Credit!  
**Call Us Before You Buy!**  
**NO DOC FEES!**

**C&C Cycle**  
Chariton, IA • 888-475-2243  
[www.cc-cycle.com](http://www.cc-cycle.com)



*Mike*  
**Sullivan**  
LAND SALES LLC  
REAL ESTATE AUCTIONS SINCE 1979

HANCOCK COUNTY, IL

## LAND AUCTION

**168 Acres • 3 Tracts**  
To be sold at the farm located at  
1441E CR 2650, Niota, IL

From Colusa, IL - 2 1/2 miles west on Road 2500N (Colusa Blacktop) to 1500E, then 1 mile north, 1/2 mile west, and 1/2 mile north.

**TUESDAY, JANUARY 12 AT 10:00 AM**

**Information** - The Pindell farm is located 4 miles northwest of Colusa, IL. at Roads 1450E-2600N in Sectio 20 of Pontoosuc Township, Hancock County, IL. Tracts 1 & 2, which will be sold "Buyer's Choice", represent some of the top producing land in the Midwest. All 3 tracts are unimproved.



**2014 Polaris Ranger 400 H.O.**  
4x4, Windshield, Top, Back Glass, Low Hours!

**NO DOC FEES!**    **\$6,995**

**C&C Cycle**  
Chariton, IA • 888-475-2243  
[www.cc-cycle.com](http://www.cc-cycle.com)

### Need Rebar?

**Wholesale**



**A W Metal LLC**  
Metal Roofing Headquarters

**641-664-3990**  
[www.awmetal.net](http://www.awmetal.net)

### USED MOBILITY

**Scooters & Power Wheel Chairs, New Batteries. Good Condition.**

**Call 319-461-9005**  
Richland

### EMPLOYMENT

**DRIVER WANTED:**  
Fulltime, Driving Work Crew, Great Pay. Call For More Information.  
660-346-1037    1-15

**FOR SALE:** John Deere 4240 Tractor, 1982, CAH, QR, 9926 Hrs., One Owner, Ft. Fenders, Extra Lights/Mirror, 95% Firestone Factory Duals, Real Sharp, \$26,500.  
573-881-3557    1-1

### AG RELATED

**FOR SALE:** John Deere 4230 Tractor, 9000 Hrs, Iowa Tractor, Turbo, Clean Inside/Out, Loader Available, \$18,950.  
573-881-3557    1-1

**FOR SALE:** Small Square Bales Of Hay, \$6.00 Each.  
712-830-1426    1-8

**FOR SALE:** Nice Small Squares Alfalfa Hay 1st, 2nd, 3rd Cuttings. Also, Shredded Cornstalks In Small Squares. Stop In For All Your Winter Hay Needs. 2 Miles North Of Caseys.  
**Emery Miller**  
20843 200th St.  
Sigourney, IA    1-1

**WANT TO BUY:** Small Square Baler. Call Any Time.  
515-835-1153    1-1

**FOR SALE:** 2-John Deere 4020 D Tractor, 1970, One Owner, Good Sheet Metal, Poor Paint, 10,000 Hrs., Or John Deere 4020 D Tractor, 1968, 6000 Hrs., With Great Bend QT Loader, Will Trade, \$12,500 Choice.  
660-874-4455    1-28-21    573-881-3557    1-1

# TINA LIVESTOCK MARKET

435 W 2nd St, Tina, MO 64682  
Casey & Amelia Flinn, Owners

## Special Feeder Sale

Monday, Jan 4 @ 10AM  
Expecting 1400 hd!

---

## Sheep, Goat & Hog Sale:

Saturday, Jan 16 @ 10AM

---

## Special Cow Sale:

Fri, Jan 22 @ 6PM

**Cattle Sales: Mondays @ 11AM**

**Sheep, Goat & Hog Sales: 1st & 3rd Saturdays @ 10AM**

**Special Cow Sales: 4th Fri of Month @ 6PM**

*Open all day on Sundays to receive livestock!*

Barn: 660-622-4214 • Casey Flinn, Owner: 816-769-7532  
Field Reps  
Bobby Morrison 816-345-0518 • Ben Peterson 660-247-2759  
Sheep/Goats/Hog: Clark Allen 660-973-6826

Find us on facebook at  
**Tina Livestock Market**

### BETTER BUILT 12 & 14 BALE HAY TRAILERS NOW AVAILABLE



At **KJ** Trailer & Ranch Equipment Sales LLC  
Kelly Kiefer • 641-344-6735

Hwy 2 West • Corydon, IA • 641-344-6735

**Tract 1** - 48 Acres of level, Class A cropland w/Muscatine, Sable & Atterberry soil and 142 Pl. This tract is nearly all pattern tiled w/4" tile on 40' centers.

**Tract 2** - 66 acres of level, Class A cropland w/Muscatine, Sable & Atterberry soil and 145 Pl. There are approximately 20 acres on the east side of pattern tile w/4" tile on 40' centers.

**Tract 3** - 54 acres w/approximately 25 acres tillable, containing mostly Atterberry soil w/116 Pl and having several acres of pattern tile. The balance of this tract is open rolling pasture w/a few acres of wooded draws.

**Terms** - All 3 tracts will be sold on a price per acre basis, with a survey which will be completed prior to the auction, determining the exact acres of each tract. Ten percent of the bid price to be paid on day of sale w/the balance due within 30 days. Title Insurance provided by Sellers. Full possession, including the 2021 farming rights, will be conveyed at closing. All announcements made at the auction, supersede any prior advertising.

Aerial Photos, Plat Maps, Soil Maps & Tile Map at  
[www.mikesullivanlandsales.com](http://www.mikesullivanlandsales.com).

## DOROTHY L. PINDELL TRUST

**Mike Sullivan Land Sales LLC**  
414 Main • PO Box 68 • Carthage, IL 62321  
217-357-5252 • [www.mikesullivanlandsales.com](http://www.mikesullivanlandsales.com)



**WOW**

**2015 Kawasaki Vulcan 900 Classic LT**  
Sissy Bar & Pad, Bags, Windshield, Floorboards, Only 3000 Miles

**NO DOC FEES!**    **\$5,895**

**C&C Cycle**  
Chariton, IA • 888-475-2243  
[www.cc-cycle.com](http://www.cc-cycle.com)

# BONNETT TRAILERS

## SALES AND SERVICE

**Stewartsville, MO**  
**816-669-3794**

[www.bonnett-trailers.com](http://www.bonnett-trailers.com)



**Trailer Mechanic on Duty**

**HAY TRAILER RENTAL \$100 a Day**



**2021 PJ (LD) (27+5)**

Gooseneck, Low Pro, Tandem Dual, 2-10K Axles, 5' Dove w/2 Flip Over Monster Ramps, **\$11,300**



**2021 Doolittle 84"x12'**

Solid Sides, Single Axle, 5' Gate **\$2,450**



**USED 2015 Titan 38' Tandem Dual**

12K Dexter Axles, 2 Speed Jacks, Electric Over Hydraulic Brakes, 14 Ply Tires **\$10,500**



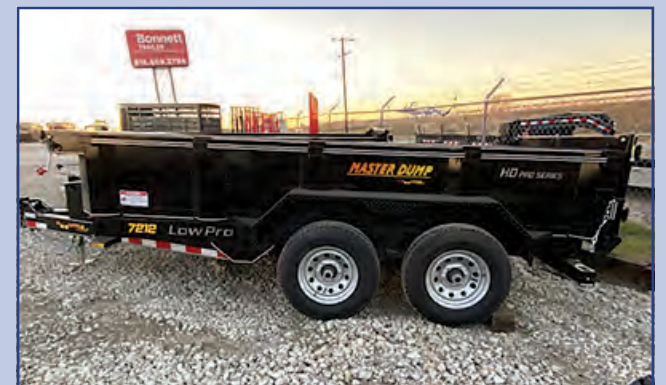
**1998 Loadmaster 18' (16+2)**

7K GVW, Slide In Ramps, Winch, Wood Side Racks **\$2,500**



**2021 Aluminum Tilt**

Single Axle w/Aluminum Wheels, 2" Coupler  
**13'x80" \$3,150**  
**14'x80" \$3,350**



**2021 Doolittle Master Dump**

Dual Cylinder, LED, Wireless Remote, Tarp **\$6,650**



**1984 Hillsboro 6x20' \$2,350**



**2021 Hillsboro 22' Open Car Trailer**

Torsion Axles, 6 D-Rings, Removable Fenders, Aluminum Wheels, Matching Spare, **\$7,850**



**Hayliner Hay Trailers**

2 Brake Axles, 14 Ply Radials, LED



**Used 2001 Ponderosa 22' Gooseneck Stock Combo w/Dressing Room \$3,800**



**1988 Jackson Horse Trailer**

Living Quarters, Needs Some TLC, New 14 Ply Tires, **\$4,000**



**2020 Master Tow**

Single Axle w/Straps & Ratchets **\$1,275**



**HMC Electric Feeder**  
 Chain Drive, Switch on Feeder & In Cab, Rain Shield on Feed Spout **1000# Feeder \$1,450**



**3 Point Bale Unroller by Parkhurst \$1,600**



**New Redline Harrow**  
 1/2" Tines, New Tires, 3x16 Cylinder, 2500# Axle, Hyd Fold



**Ranch Hand Replacement Bumper & Grill Guard**



**Hillsboro Aluminum Flatbeds**  
 GN Hitch, LED Lights Full Wiring Harness



**HydraBed by Triple C Mfg**



**ALL Types of Trailer Repair**





# WHITETAIL PROPERTIES REAL ESTATE

HUNTING | RANCH | FARM | TIMBER

## LISTED OR SOLD IN 2020

Davis Co, IA - 83 acres +/- An awesome mix of improved habitat and food plots for hunting with the potential from combined CRP and tillable cash rent for this investment. **SOLD**

Iowa Co, IA - 51.25 acres Along the Iowa River sits this affordable recreational property with a camp, fish, swim, hunt - many options await the owners of this tract. **SOLD**

Jasper Co, IA - 4.8 acres +/- A small tract of land perfect for building your dream home with income through CRP, and only 18 minutes from Des Moines city limits. **SOLD**

Jasper Co, IA - 43 acres +/- This recreational and hunting tract along the Skunk River Valley offers income and is a well-known river corridor in Iowa to hunt big whitetails. \$167,700

Jasper Co, IA - 73 acres +/- This farm is so diverse and offers income-generating CRP with a pond of deer and turkeys, building sites, rolling ridges, secluded pond and so much more. **SOLD**

Johnson Co, IA - 13 acres +/- This Century Farm acreage located a short drive north of Des Moines has a historic farmhouse, barn, outbuildings, ponds, and a pool. **PENDING**

Keokuk Co, IA - 797 acres +/- You've seen it in your dreams; a huge farm bursting with wildlife and top-end accommodations. Welcome to the extraordinary Skunk River Lodge. **SOLD**

Mahaska Co, IA - 97.22 acres +/- This property has a new CRP contract that will generate a strong return while offering nice hunting upside. **SOLD**

Tama Co, IA - 80 acres +/- This Iowa River corridor property offers a long-term, high-rate payment along with deer, turkey, waterfowl, and pheasants. \$498,000

Washington Co, IA - 13 acres +/- This acreage sits conveniently across the road from Lake Darling State Park, and includes a house, machine shed, outbuildings, and a pond. \$287,000

Washington Co, IA - 40.83 acres +/- This all timber recreational property sits at the confluence where the English River meets the Iowa River, just a short drive from Iowa City. **SOLD**

Washington Co, IA - 95 acres Income-producing CRP and timber tract with English River. **SOLD** ROI at asking price. Heavy deer trails throughout evidence a strong deer population. **SOLD**

Adams Co, IA - 18 Acres +/- Improved areas, East Nodaway River runs through farm, Mile South of Prescott. **SOLD**

Clarke Co, IA - 40 Acres +/- Building site, +/- 23 acres of FSA Tillable, +/- 17 acres +/- East side access. **SOLD**

Clarke Co, IA - 83 Acres, Brick Ranch style home, 4 pole buildings, +/- 46 acres currently in hay, +/- 33 acres in pasture, \$650,000.

Clarke Co, IA - 106 acres +/- This combo farm features include multiple pond building site, +/- 10 acres +/- of part of the farm and 1 established food plot. **SOLD**

Decatur Co, IA - 120 +/- Acres +/- 120 +/- acre pond, Mature timber, **PENDING**

Decatur Co, IA - 377 +/- Acres +/- 22 +/- acres CRP, Secluded farm, Approx. 1878 sq ft m. **SOLD** finished food plots, **SOLD**

Marion Co, IA - 155 acres +/- Located less than an hour from Des Moines Metro, this great farm has established food plots, tillable and CRP. **SOLD**

Polk Co, IA - 28.35 Acres +/- Building site, +/- 10 +/- acres +/- food plots, Des Moines River frontage, Mixture of timber and younger brush. **SOLD**

Ringgold Co, IA - 239 +/- Acres +/- Building site with big timber and CRP, 54x75 pole barn with 4 +/- quarters. **SOLD**

Taylor Co, IA - 13.18 Acres Looking for a smaller farm that is priced right? Then look at this all-around recreational property is priced to sell. **SOLD**

Taylor Co, IA - 123 acres +/- Looking for a combo farm with great CRP income? Look at this **PENDING** that and many more features. **PENDING**

Union Co, IA - 123 +/- Acres +/- 123 acres of tillable, Established **PENDING** \$48,000. Pending

Wayne Co, IA - 130 Acres, One of a kind farm, Custom Built home, Approx. 1657 sq ft, 3 bedrooms, 2 bath, 3 car attached garage, Metal Shop, \$1,350,000.

Wayne Co, IA - 240 acres +/- This great combo farm offers multiple building sites, 7 ponds of which 6 are stocked, CRP and tillable. \$1,008,000

Appanoose Co, IA - 34 acres This property is part of the Coves of Sundown Lake Subdivision with the right of access to Sundown Lake. A potential quarry site provides nice views. **SOLD**

Davis Co, IA - 316 acres +/- Beautiful combination farm with tillable, timber, great building sites, and paved road frontage! \$1,070,000

Henry Co, IA - 96 acres +/- This secluded property offers income and great deer and turkey hunting on a 100 acre stocked pond. CRP pays \$9573/year and is enrolled through 2030. **SOLD**

Henry Co, IA - 156 acres +/- High quality tillable farm along Highway 78 with CSR2 enrolled in CRP, grain storage on site. A great farmland investment opportunity. **SOLD**

Henry Co, IA - 317 acres Located on the Skunk River near Mt. Pleasant with income from CRP and incredible whitetail, turkey, pheasant and small game hunting opportunities. **SOLD**

Jefferson Co, IA - 61 acres Nice farm with about 35 acres tillable, timbered creek bordering the property and a great building site with awesome views. **PENDING**

Jefferson Co, IA - 240 acres +/- This scenic property has everything needed to grow and hold big whitetails and also has an awesome building site that is less than 100 yards off a paved road! \$799,000

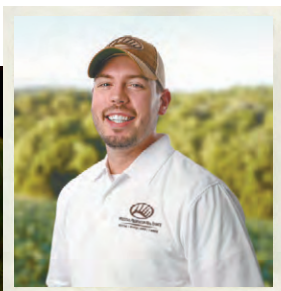
Lee Co, IA - 47 acres +/- Managed hunting property with cabin, year-round creek, pond, and paved road in Southeast Iowa! Great building site for a home also. **SOLD**

Monroe Co, IA - 120 acres +/- Turnkey hunting property with a 4 BR/3BA home and outbuilding. The best trophy managed neighborhoods in Southeast Iowa. **SOLD**

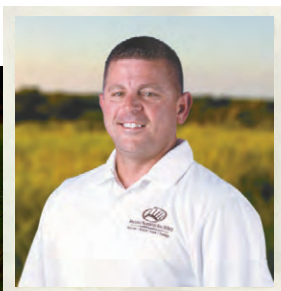
Monroe Co, IA - 219 acres +/- Custom 3/3 home with all amenities and beautiful patio view. This highly managed farm provides world-class hunting and is turn-key. **SOLD**

Van Buren Co, IA - 90 acres +/- Located in a good neighborhood, this certified tree farm has a pond, custom home, storage shed and hunting opportunities. \$325,000 **PENDING**

Wapello Co, IA - 280 acres +/- Totally secluded high-end turn-key hunting farm with very nice building sites, tower blinds and a history of big bucks. Gate deer and turkey location! **SOLD**



**BEN HARSHYNE**  
Licensed in Iowa  
(319) 853-1162



**GABE ADAIR**  
Licensed in Iowa  
(515) 971-8182



**RICH BAUGH**  
Licensed in IA, IL & MO  
(319) 750-9273

TO VIEW THESE PROPERTIES AND HUNDREDS MORE GO TO  
**WHITETAILPROPERTIES.COM**



Whitetail Properties Real Estate, LLC - DBA Whitetail Properties | In the States of Nebraska & North Dakota - DBA Whitetail Trophy Properties Real Estate LLC | Licensed in IL, MO, IA, KS, KY, NE & OK - Dan Perez, Broker | Licensed in AR, CO, GA, MN, ND, SD, TN & WI - Jeff Evans, Broker | Licensed in FL, OH, NY & PA - Jefferson Kirk Gilbert, Broker | Licensed in TX & NM - Joey Bellington, Broker | Licensed in IN - Bill Minor, Broker | Licensed in AL, GA, LA, & MS - Sybil Stewart, Broker | Licensed in TN - Chris Wakelield, Broker | Licensed in TN - Bobby Powers, Broker | Licensed in AR - Anthony Chrisco, Broker | Licensed in SC, NC & VA - Chip Camp, Broker | Licensed in NC - Rich Baugh, Broker | Licensed in MI - Edmund Joel Nogaski, Broker | Licensed in WV - Debbie S. Laux, Broker | Licensed in ID, MT, OR, UT & WY - Aaron Milliken, Broker

