



**1998 Pontiac Grand Prix GT**  
4 Door, V6, AT, AC,  
Full Power, Spoiler, CD  
Retail \$5,899  
**SALE \$4,251**



**1999 Mercury Sable GS**  
4 Door, V6, AT, AC,  
Full Power  
Retail \$5,135  
**SALE \$2,825**



**2000 Toyota Solara SLE**  
2 Door, V6, AT, AC, Full Power,  
Leather, Moon, Spoiler  
Retail \$6,725  
**SALE \$4,866**



**2001 Cadillac Eldorado ETC**  
2 Door, V8, AT, AC, Full Power,  
Leather, Bose, Chrome Wheels  
Retail \$8,955  
**SALE \$6,474**



**2002 Focus ZX3**  
2 Door, 4 Cyl,  
5 Spd, PW, PL  
Retail \$4,750  
**SALE \$3,622**



**2004 Grand Prix GT2**  
4 Door, V6, AT, AC,  
Full Power, Spoiler, Moon  
Retail \$8,140  
**SALE \$6,755**



**2004 Volvo S40**  
4 Door, 4 Cyl, Turbo, AT, AC,  
Full Power, Leather, CD,  
Only 86K  
Retail \$9,715  
**SALE \$7,877**



**2006 Charger SXT**  
4 Door, V6, AT, AC, Full Power,  
Moon, Low Miles, One-Owner.  
Local Trade  
Retail \$15,500  
**SALE \$13,868**



**2006 Impala SS**  
V8, AT, AC, Full Power, Moon,  
Heated Leather Seats, One-Owner,  
Low Miles, GM Certified, Local Trade  
Retail \$18,125  
**SALE \$16,232**



**2007 VW Bug**  
2 Door, 5 Cyl, 5 Spd, AC, AT,  
Leather, Local Trade  
Retail \$13,075  
**SALE \$10,968**



**2007 Tahoe LT**  
4 Door, V8, Full Power, Leather  
Heated Seats, Moon, Tow Package,  
22" Custom Wheels  
Retail \$31,750  
**SALE \$29,898**



**2007 GMC Yukon Denali**  
4 Door, V8, AWD, Custom  
Kelderman Air Ride, Adjustable Sus-  
pension, Full Power, Leather, Dual  
DVD, Moon, 24" Custom Wheels,  
Retail \$37,990  
**SALE \$32,316**



**2005 Chrysler Pacifica Touring**  
4 Door, V6, AWD, Full Power,  
Front & 2nd Row Heated Seat,  
Moon, DVD  
Retail \$15,422  
**SALE \$13,989**



**2004 Envoy XL SLT**  
4 Door, V6, 4x4, Full  
Power, Heated Leather, Tow  
Retail \$12,450  
**SALE \$9,668**



**2006 Grand Caravan SE**  
4 Door, V6, AT, Rear Air,  
Full Power, Local Trade  
Retail \$8,815  
**SALE \$6,566**



**2002 Windstar SE**  
4 Door, V6, AT,  
Rear Air  
Retail \$6,025  
**SALE \$4,255**



**2000 Ford F250 Ext XLT**  
4 Door, 4x4, Diesel, Service Box  
& Regular Box, Tow Package  
Retail \$13,915  
**SALE \$9,988**



**1997 Ranger Ext XLT**  
2 Door, V6, AT,  
Only 79K Miles  
Retail \$6,700  
**SALE \$5,655**



**2005 Silverado 2500 Crew LT**  
4 Door, 4x4, AT, AC,  
Full Power, Tow  
Retail \$21,850  
**SALE \$14,420**



**2006 Ram 1500 4x4 ST**  
Reg Cab, 2 Door, V8, 4x4, 20"  
Wheels, CD, Only 32K Miles  
Retail \$18,955  
**SALE \$16,898**

Tax & Fees Extra



**Clemmons Inc.**  
OF OSKALOOSA



**1601 A. Ave. West,  
Oskaloosa  
641-673-3447  
800-798-3449**

[www.clemonsoskaloosa.com](http://www.clemonsoskaloosa.com)



# CANTRIL LUMBER

Cantril, Iowa

Hours • Mon-Fri 7-5; Sat 7-12

PH 319-397-2351 • 1-888-791-9273

**Full Line of Building Materials**

**Check Out Our Metal Siding Price!**

- \* OSB \* Drywall 5/8" to 1/2" \* Insulation \* Shingles \* Plyco Doors
- \* Windows \* Overhead Doors \* All Colors of Metal Roofing & Siding
- \* Concrete Perma Columns \* Treated Fence Posts \* Metal Gates



**Portable Buildings**  
Custom Built  
to Your Specifications.  
Call for Price

See Us For All Your Building Needs!

FOR SALE: 1990 Fiat Allis 14C 7000, Original Hours, New Engine, 70% Undercarriage, Farmer Owned, Very Good Condition, \$35,000.  
217-985-4640 1-28

FOR SALE: High Quality Hay, Excellent Alfalfa/Orchard Grass, (130 RFV) & Clover Grass Hay. Large Squares, Small Squares & Big Round Bales. No Sunday Calls.  
573-633-1019 2-4

FOR SALE: 90 Big Bales/CRP-Grass, No Rain, \$35. Albia, IA.  
641-932-2142 1-28

WANTED: Rotary Hoe. Vertical Tillage Implement.  
M-F 8-5 or Voicemail.  
641-766-6790 2-18

**Spilman Auto Parts**

**SPILMAN AUTO PARTS**  
Bloomfield, Iowa • 641-664-2463 • 1-800-477-1367

<p>2005 Chevy Colorado LS Z71, Maroon, PW, PL, CD, Air Bags Bad 3.5, Runs Good, 52,510 Miles</p>	<p>2010 Chevrolet Impala LT, 4 Door, 3.5L, Auto OD, PW, PL, CD, AC, Left Air Bag Bad, Hit Front, Lot Drives, 39,236 Miles</p>
<p>2010 Ford Escape XLT, FWD, White, 4dr, 2.5L, Auto OD, PW, PL, CD, AC, Left Air Bag Bd, Hit Front, 11,332 Miles</p>	<p>2009 Chevrolet Express Van, 1500, AWD, 5.3L, Auto OD, Tilt, Cruise, Delay, PW, PL, AC, Air Bags Good, Ditched, 81,068 Miles</p>

**Most Cars Have Warranty**

**VAN GORP AUTO RECYCLERS**

Need Parts For Your Car, Pickup, Or SUV?  
2696 Highway 63, Oskaloosa, IA  
**641-673-8459 • 800-245-2336**

Save 50% To 75% On All Parts

90-Day Warranty

2006 Lucerne CXL, 3.8 Loaded, Leather, 18K, \$15,250

2004 Eclipse, V6, 5 Spd, 81K, \$5,450

2003 Dodge Dakota ST 2wd, V6, AT, 81K, \$6,250

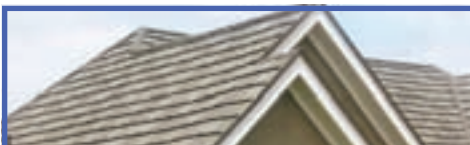
**Most Cars Have Warranty**

**Xpert builders**  
Licensed-Bonded-Insured

**30x40x10**  
With Two Overhead Doors  
One Walk In  
**\$9,200**  
All Sizes Available  
Lowest Rates Anywhere  
Custom Built To your Needs

40 Yr. Warranty On Paint, Engineered Trusses  
All 2x6 Construction, All Sizes & Styles.  
Commercial - Residential Steel & Post Frame Construction

Call The Experts At:  
**641-295-5332 Or 641-295-4467**



**Plan Your Roofing Projects Now And Take Advantage of Our Specials On Stone Coated Steel DECRA® Shingles**  
*Qualifies for Maximum Insurance Discounts*

*Will not burn, break, warp or curl. Stone coated laminate shingle look. Class 4 impact resistant. 50 year limited warranty includes 120 mph winds. Half the weight of laminated shingles. Can be installed over most roofs. Walkable, durable and low maintenance*



### YODER LUMBER

Located 4 Miles South of Drakesville on Ice Ave or 4 Miles West of Bloomfield

Open Monday-Friday: 7 am - 5 pm; Closed Sat & Sun  
Owners: Joe Yoder & Daniel Yutzzy VM# 641-722-3605



**2000 Freightliner**  
Day Cab, 400HP Cummins Super 10, Jake Brake  
850,000 Miles  
Good Tires  
**641-990-1009**

\$9.500

**MH 319-367-5744**

**www.menkehoyerauction.com**

FARM • HOME • LAND • MACHINERY • ESTATES

**Professionals That Get Results!**

**Corey Fraise** Auctioneer/Broker

**Jeff Hoyer** Auctioneer/Broker

Sell It In The Hawkeye Trader

## RUSTYS Auto Sales

Platte City, MO • 816-858-4220

<p><b>Simon 60 Ft Lift</b> New Tires &amp; Wheels Runs &amp; Operates Good <b>\$9,500</b></p>	<p><b>Case 90XT, Low Hrs, Never Abused, Aux Hydraulics, Tooth Bucket, Cab w/Heat, Big Rubber, One Owner, \$18,900</b></p>
<p><b>2001 Ford F350, 7.3 Powerstroke 4x4, Lariat, 2 Owner Truck Crew Cab, Longbed, None Nicer!</b> <b>\$18,000</b></p>	<p><b>1997 Ford Super Duty, 12 Ft Dump Bed, AT, 7.3 Powerstroke, Ready To Work</b> <b>\$8,279</b></p>
<p><b>IH 1486</b> Completely Rebuilt Front &amp; Back, Low Hrs, Duals <b>\$7,950</b></p>	<p><b>2006 Ford F350 Dually 4x4, AT, 6.0 Powerstroke One Owner, Close To Perfect Even Smells New!</b> <b>\$19,888</b></p>
<p><b>2001 Jeep Wrangler</b> Soft Top, AT, 4x4, Brand New Tires Come &amp; Test Drive! <b>\$10,250</b></p>	<p><b>1994 Ford Bronco XLT 4x4, 5 Spd, Rust Free Nicest One Around!</b> <b>\$6,000</b></p>
<p><b>1994 Jeep Grand Cherokee 4x4, AT, Leather, Loaded Runs &amp; Drives Great!</b> <b>\$4,850</b></p>	<p><b>2000 Chevy 12 Pass Van V8, AT, Great For Church or Other Organization, Good Miles</b> <b>\$5,400</b></p>

**www.rustysautosales.com**



# R/T MOTORS

www.rtmotors.com

Financing Available

1310 E. 7th Street  
(East Hwy 6) Atlantic, IA  
712-243-1222

1998 Jeep Grand Cherokee Limited  
4x4, Loaded, Leather  
136K  
\$3,995



2009 Chevy 1500  
Crew Cab LT, 4x4, 5.3 V8  
Auto, Loaded, Fleet Owned,  
Nice, 83K  
\$21,995



2010 Chevy Impala LT  
V6, Loaded  
52K Miles, White  
\$12,995



2009 Chevy 2500 LT  
Crew, 4x4, 6.0 V8, Loaded,  
Fleet Co. Owned, Well  
Maintained, 84K, Must See!  
\$25,995



2008 Ford F250 Crew  
4x4, 5.4, V8, Auto, Loaded,  
XLT, Fleet Co. Owned, 82K,  
"Clean Unit"  
\$23,995



2006 Chrysler Town &  
Country  
Stow-N-Go, Touring Edition,  
Pwr Doors, V6, 73K  
\$9,995



2005 Chrysler Pacifica  
Touring  
Loaded, 3rd Row, Moonroof,  
Clean, Must See! 76K  
\$10,500



2007 Ford Focus ZX3  
11K, 4 Cyl, 2 Door,  
Auto  
\$8,995



2006 Chevy Trailblazer  
LS, Blue, V6, 4x4  
Loaded, Clean, 116K  
\$8,995



2006 Chevy Equinox  
3.4 V6, Loaded, 108K,  
AWD  
\$10,995



2007 Ford XLT  
Crew Cab, 4x4, 4dr,  
Loaded Nice! Clean!  
\$18,495



2002 Chevy 1500  
Ext. Cab 4x4, 5.3 V8, Auto,  
Loaded, 20" Custom Wheels,  
131K  
\$8,595



2006 Jeep Liberty  
V6 Auto, Loaded, 4x4,  
M.R., 49K  
\$12,995



2004 Dodge Durango  
SLT, 4x4, Leather,  
3rd Seat, 98K  
\$9,500



2002 Ford F150 XLT  
4x4, Reg Cab, S.B., 5.4 V8,  
Auto, Loaded, Red, 105K  
\$9,700



2004 Chevy Z71  
Ext. Cab, 4x4, 5.3 V8,  
Auto, Loaded, 103K  
\$13,995



2001 Ford Ranger XLT  
Ext Cab, 4x4, 4.0 V6  
Auto, Loaded, 114K  
\$6,995



2002 Dodge 1500  
Quad Cab Sport, 4x4,  
5.9L, V8, Heated. Leather  
\$8,995



2007 GMC Yukon SLT  
4x4, 5.3 V8, Auto, Leather  
Loaded, 20" Wheels, New  
Tires, 75K, \$24,995



2007 Cadillac STS 4  
AWD, Loaded, Moonroof  
Navigation, 67K, V6, Red  
\$20,500



2002 Mazda Tribute LX  
4x4, V6, Auto  
Moonroof, 89K  
\$8,495



1994 Chevy Ext. Cab  
4x4, V8, Auto, 138K,  
Runs Out Good!  
Matching Topper  
\$5,250



2008 Dodge Durango SLT  
4.7 V8, 4x4, Power Seat  
Loaded, Clean, 70K  
\$14,995



2002 Ford Ranger XLT  
4.0 V6, Auto, 4x4, Off  
Road Pkg, Quad Cab, 96K  
\$8,495



R/T Motors  
Also Offers  
Trailers For Rent!



2009 Polaris  
Ranger XP  
4x4  
700cc, EFI,  
5,391 Miles

Only \$8,595

G&C Cycle  
Chariton, IA • 888-475-2243  
www.cc-cycle.com

Conley Insulation  
Fiberglass,  
Cellulose,  
Blow In  
Insulation,  
Home, Ag,  
Business

Dennis (641) 777-1890  
or Scott (641) 799-8932  
205 S. Clinton, Albia, IA

FOR SALE: 1950 John Deere  
M Tractor, with 1 row cultivator,  
good shape. 1-21  
660-338-2743

FOR SALE: Organic Hay, 4x6  
Net Wrapped and Stored In-  
side, 1st & 2nd Cuttings. Call  
for Tests and Pricing. 1-21  
641-919-8418

FOR SALE: Small Square  
Bales Mixed Grass Hay \$2.50/  
Bale; 1st Cutting Alfalfa \$2.25/  
Bale. Lancaster Area. Leave  
Message. 1-21  
660-341-3379



2006 Chevy Duramax DSL  
Extended Cab, 3/4 Ton, LT Package,  
83,000 Miles, New Tires, Extended Warranty,  
Never Pulled A Trailer, \$26,250  
660-663-5226



2005 King Ranch F350  
White/Tan, 68,000 Miles  
Automatic, Diesel, 4x4  
\$17,500 OBO  
641-777-8019

FOR SALE: Oat Straw, Small  
Square Bales, Baled Behind  
Threshing Machine, Includes  
All the Fines. Nice Quality  
\$3.50/Bale.

Nelson Gingerich, 1 Mile East  
& 1 Mile North of Drakesville.  
641-722-3002  
Ext. 2

FOR SALE: 1977 AC 7060,  
4700 Hrs., 20.8-38 With Duals,  
Nice. 1-21  
641-919-9370

FOR SALE: 10x31 Mayrath  
auger, 540 PTO drive, used  
2 seasons, plastic hopper.  
\$2,500 firm. Leonard, MO.  
Leave Message. 1-21  
660-651-4135

FOR SALE: EZ Haul 7 bale  
dump hay trailer, same as new;  
Danhauser post driver; Brill-  
ion seeder with boxes, good  
shape. 1-21  
660-338-2743

FOR SALE: Grass hay. Big  
round bales. 1-21  
641-208-5833

## REECE ENTERPRISES



\$16,900

1996 Freightliner FLD112, M11  
Cummins, 10 Spd, Air Ride Cab, &  
Suspension, Very Well Maintained



\$17,900

2002 Freightliner FL70, 3126 Cat,  
300HP, 10 Spd Auto Shift, Air Ride,  
Cab & Suspension

1-2011 Jet 34' Aluminum • 2-2011 Jet 34' Steel  
1-2011 Mauer 24' Steel • 1-2006 Mauer 24' Steel

Visit Us on our Website!

Call Us For Your Truck & Trailer Parts Needs!  
Hwy 14 North • Chariton, IA



(641) 774-2882



www.reeceenterprise.com

# Let's Talk Shop!

Compared to a conventional shop or storage building, an EPS SOLID CORE building can reduce your heating and cooling costs up to 50%.

- ▶ Broad custom design capabilities offering:
  - Larger clear-spans up to 100' wide and 24' tall
  - Vaulted ceilings
  - Solid exterior and interior continuous OSB or plywood sheathing and interior liner options of steel or FRP.
- ▶ Closed cell foam walls stop the transfer of moisture that results in rust and corrosion.
- ▶ Better acoustics for a quieter building

- Efficient
- Comfortable
- Durable
- Low maintenance

Call today to learn more about what makes the difference!

INDEPENDENT AUTHORIZED DEALER



www.epsbuildings.com

Integrity Builders  
& Supply Inc.

319-752-9001

www.integritybuild.net • Burlington, IA





**Burn Barrels \$25.00**

**Blue Plastic 55 Gal Storage Barrels \$20.00**

# ALLEN'S OUTLET

SOUTH EAST IOWAS BEST KEPT SECRET!

*Your Home Improvement Warehouse*

NOW IS THE TIME FOR THOSE WINTER PROJECTS!

1120 SOUTH MADISON AVE. OTTUMWA (641)682-1961

10% Cash & Carry Discount On Regular Priced Items

Mon-Fri 9-5  
Saturday 9-3



**Showplace Wood Products Cabinets**  
**50% OFF** Allen's Everyday Low Price  
On Wood Specie Upgrades or  
**\$20.00 Rebate**  
On Each Cabinet Purchased!  
Sale Prices Good Through April 11, 2011

**What a Deal!!!**

**5 Foot Shower W/2 Seats**

**\$150.00**

While Supplies Last

Red Oak, Hickory, Rustic Hickory, Cherry, Rustic Cherry, Maple, Rustic Alder, Lyptus, 1/4 Sawn Oak

**48" 1 Piece Showers Grade A**

**ON SALE!**

Starting @ **\$249.00**

**1 Pc Tub/Shower Fiberglass/Gel Coat**

**\$279.00**

Check Out Our Website At: [www.allensoutlet.net](http://www.allensoutlet.net)

## Woodworth Trailer Sales

660-646-5070

5898 Hwy 190, Chillicothe, MO 64601 • Come See Us For All Your Trailer Needs




**Grain & Cornhead Movers**

**2 and 4 Wheel Style**

**Hay Boss Hay Trailers**

Big Or Small - We Have Them All

Hydraulic Self Dumping,  
Also Hydraulic Pick-up Bed Spikes,  
3 Point Hitch Hay Unroller,  
All Kinds of Hay Equipment

WANTED: Metal or Plastic Totes, Pallet Size or Similar. JD or Kinze Planter for Parts. Grain Drill(s). Hay Feeding Panels.  
johno@iowatelecom.net 641-766-6790 1-28

FOR SALE: 36 3X4 Bales of 3rd Cutting Alfalfa Hay, 21% Protein, 150 RFV. 660-216-0938 1-21

FOR SALE: 1951 John Deere MT Tractor. Completely Restored. \$4,500 OBO. SHARP! Located in Bloomfield, IA. 641-208-5847 319-759-9172 EFTN

FOR SALE: Patz 16 - 20' Re-built Silo Loader. Evenings. 319-397-2355 TFN

FOR SALE: 1450 Case Track Loader w/Ripper & Backhoe Attachment For Skidloader Or Tractor. Misc Concrete & Construction Tools. 319-470-0979 TFN

WINCO PTO GENERATORS: New & Used, Save! Wes Sebetka. 641-990-1094 TFN

TRACTOR PARTS: New Tractor Parts For All Makes Of Tractors. See Our Large Online Parts Catalog At [www.ungertractor.com](http://www.ungertractor.com). Family Run Business With 30 Years Experience In Mexico, MO. We Ship UPS Daily. New Tractor Rims-IN STOCK. Used Tractor Parts Specializing In Ford & MF. Calls Welcome. 800-748-8168 TFN

## OSENBAUGH'S PRAIRIE SEED FARMS

CRP MIXES • WILDFLOWERS • PRAIRIE GRASSES

Cash Discounts Available on CP2, CP25, Pollinator, other CRP and CSP mixes. Landowners net cost varies from FREE to \$50/acre. Prepay for Spring or Cash and Carry. Seed shortages are expected, prices are rising, don't delay; seed purchases now will cut your 2010 tax bill significantly.

We have been in the prairie seed business on our century farm for 30 years and still growing. Location is in Lucas County 1 mile east of Clarke County on County road H20 (also called 542nd Street).

Fall planting window is November 15 until freeze up. Seeding equipment to loan and/or rent is ready for you or we can do it for you!

We present a seeding mix (plan) to you and then to your NRCS office for approval. Fast and simple!  
Order forms are available or simply call, email, fax, mail or stop by and we'll help you get ready for your 1st CRP check!

**11009 542nd Street / Lucas, Iowa 50151**

**Toll Free: 800-582-2788 / Phone 641-766-6790**

**Fax: 641-766-6795 / [info@prairieseedsfarms.com](mailto:info@prairieseedsfarms.com)**

**[www.prairieseedsfarms.com](http://www.prairieseedsfarms.com)**

John and Carol Osenbaugh, Proprietors  
Proud to be Growing Seeds in America's Heartland




# XYPEX

## PERMANENT FOUNDATION REPAIR

**XYPEX GROWS INTO THE CRACKS TO KEEP YOU DRY AND 100% WORRY-FREE!**

GIVE US A CALL OR VISIT [XYPEX.COM](http://XYPEX.COM) FOR MORE INFORMATION



205 S. IOWA AVE. - OTTUMWA

**800-568-4452**

HAWKEYE TRADER CSSD10711#011411



## Lockridge Inc. Building Special

*Available At All Locations*



- 30ft. x 40ft. x 10 ft.
- Post Frame Construction
- 16ft. x 8ft. Raised Panel Overhead Door
- 36in 6-Panel Entry Door
- 40 Year Limited Warranty

Centerville Area Call .....641-856-2175  
 Promise City Area Call ..641-874-5402  
 Chariton Area Call .....641-774-2785  
 Unionville, MO Call .....660-947-2193

**LOCKRIDGE**

Lumber, Hardware, Clothing & Farm Supply  
[www.lockridgeinc.com](http://www.lockridgeinc.com)

\*Does not include local sale tax or delivery. See store for details.

## Filter Days Sale

Now Through February 28th



Baldwin Has Over 3,300 Different Filters Available For Oil, Air, Fuel, Coolant, Transmission, Hydraulic and Many Other Applications

**BALDWIN FILTERS**

**15% OFF ALL BALDWIN FILTERS**

## Hamilton Produce Co.

105 W. Franklin • Bloomfield, IA

**641-664-2459 or 1-800-469-7749**

**traderproductions.com**



**HEROLD TRAILER SALES**  
Indianola, IA

Product Member of **ROUTE 66 RV Network**

Complete Supply Store Parts & Accessories

1806 W. 2ND - HWY 92 WEST, INDIANOLA, IA - Mon-Fri 8-5 • Sat 8-12

**Come See Us at the R.V. Camping Show**  
**Feb 3rd-6th, 2011**  
 Varied Industries Building  
 Iowa State Fairgrounds • Des Moines, IA  
 Stop In & See Us for Discount Tickets



**WE HAVE NEW UNITS ARRIVING DAILY!!**  
 Check Us Out at [www.heroldtrailersales.com](http://www.heroldtrailersales.com) or Stop in to See Us.



**1999 Jayco 31'**  
2-Slides, **\$9,850**



**2006 Puma 25 Ft**  
1-Slide, **\$12,900**



**2003 Aerocub 23 Ft**  
Clean! **\$7,875**



**1991 Aljo 5th Wheel**  
**\$4,850**

**www.Heroldtrailersales.com**  
**515-961-7405**

• WOW • WOW • WOW •

**BUY HERE**  **PAY HERE**

**RON'S AUTOMOTIVE**

"WE FINANCE EVERYONE"

Drive Home Today From  
 As Low As **\$500** Down

Ron Inman 1003 W. 2nd Avenue  
 515-962-1966 Indianola, Ia. 50125

• WOW • WOW • WOW •


FOR SALE: Tractors Tires. 16.9-26, 35% Tread. One Has A Boot In It. The Other Has A Break In It. Reasonable.  
 641-680-0892  
 641-675-3421 ETFN

ROUND CORRAL PANELS: 70 Lbs, 12' 1 3/4" Pipe, Powder Coat Paint, \$73 Each. Wes Sebetka.  
 641-990-1094 TFN

FOR SALE: Door For IH 86 Series Cab & 2+2 IH, Nice Shape. 660-866-2330 or 641-341-4835 ETFN

WINCO PTO GENERATORS: New & Used, Save! Wes Sebetka.  
 641-990-1094 TFN

FOR SALE: Vermeer 605F Baler, Field Ready, Some Spare Belting, \$1500.  
 641-680-0892 ETFN



**212 E. Jefferson**  
**Bloomfield, IA**  
 M-F 10 AM - 6 PM  
 "Out by 5 PM Tuesdays"  
 Across from the Legion  
**641-664-3239**  
[www.StampedeGraphics.biz](http://www.StampedeGraphics.biz)



**2000 Mack Vision 427-Super 10 - 370 Gears, 609K Miles On Engine, 1,006,736 On Speedometer & Too Many New Parts To Mention**  
**\$22,500 OBO**



**1993 Chevy C3500 6.5 Turbo, Auto, 2WD, 7'x9' Flat Bed w/ Hoist, Sander Box, 7 1/2 Western Snow Plow**  
**\$6,500 OBO**

**Call: 319-931-3838**

 <p><b>\$25,999</b></p> <p><b>'08 GMC Canyon</b> Crew, 4x4, SLT, Leather, 5,000 Miles, Chrome Wheels, Black</p>	 <p><b>\$27,998</b></p> <p><b>'09 GMC Sierra</b> Ext. Cab, 4x4, SLT, Leather, Chrome Wheels, Htd. Seats, 1-Owner</p>	 <p><b>\$31,995</b></p> <p><b>'07 Chevy Avalanche LTZ</b> Nav. DVD, Sunroof, 20" Wheels, 1-Owner</p>
 <p><b>\$20,998</b></p> <p><b>'05 GMC Sierra</b> Crew Cab, 4x4, SLT, Alum. Wheels, 76K 1-Owner Miles</p>	 <p><b>\$29,885</b></p> <p><b>'09 GMC Sierra</b> Crew Cab, 4x4, SLE, Tube Steps, Chrome Grill, 32K, Red</p>	 <p><b>\$22,985</b></p> <p><b>'07 GMC Sierra</b> Ext. Cab, 4x4, Long Box, Hard To Find, Low Miles, 1-Owner</p>
 <p><b>\$32,598</b></p> <p><b>'07 Chevy Suburban</b> 4WD, 1-Owner, LTZ, Leather, DVD, 20" Custom Wheels</p>	 <p><b>\$8,595</b></p> <p><b>'06 Ford Econoline Van</b> 114K, 8 Pass., Plenty Of Storage, GREAT PEOPLE MOVER!</p>	 <p><b>\$15,999</b></p> <p><b>'10 Chevy Impala LT</b> 23K Miles, Silver, STK #18120</p>



873 Hwy 65-69 N • Indianola

**800-322-8888**

[www.wattersautoland.com](http://www.wattersautoland.com)







We're Financing Vehicles Everyday! Many Other Makes & Models - Bank Financing

# MARTZ AUTO

965 S. VINE ST  
OTTUMWA  
(641) 684-6537

Interest Rates As Low As 4.99% \*\*With Qualified Credit

See Us on the Web at [www.martzauto.com](http://www.martzauto.com)

We're Located at the Vine Street (John Deere) Exit Off of Hwy 34.



2009 Chevy Aveo LT  
4 Dr, White, Auto, AC, CD  
Remaining Factory Warranty



2008 Ford Focus SES, Black w/Gray  
Int, 4 Cyl, Automatic, AC, PS, PB, PL  
PW, Tilt, Cruise, Sunroof, XM Radio  
CD, Remaining Factory Warranty



2003 Dodge Ram 1500  
Quad Cab, 4x4, AT  
PW, PL, Tilt, Cruise  
CD, Tow Pkg



2005 Chevy Impala  
4 Dr, Maroon w/Gray Int, 6 Cyl  
Automatic, AC, PS, PB, PL, PW  
Power Seat, CD, Tilt, Cruise



2008 Chevy HHR LT, AT, PW, PL  
Tilt, Cruise, CD, Heated Seats  
Pwr Mirrors, Leather, Sunroof  
Factory Warranty



2001 Saturn Vue L300  
4 Dr, V6, Automatic, Leather,  
Heated Seats, Sunroof, PW, PL  
Tilt, Cruise



2000 Chevy S10, Ext. Cab, 2WD  
Silver W/ Dark Gray Int., 4 Cyl, Auto  
AC, PS, PB, PW, PL, CD, Tilt, Cruise  
Bed Cover



2008 Dodge Grand Charavan SE  
White w/Gray Int, V6, Automatic  
AC, PS, PB, PL, PW, Power Seat  
CD, Tilt, Cruise



2008 Ford XLT Crew Cab F150  
EX4, Tow Pkg, 5.4 V8, AT, PW, PL  
Tilt, Cruise, CD, P-Seat, Tonneau  
Cover, Spray In Bedliner

# DeSoto Equipment

New Location At The Intersection Of I-80  
& 169 At The 110 Exit Off I80

DeSoto, IA.

[www.desotoequipment.com](http://www.desotoequipment.com)

Wayne Higgins • 515-835-1290

Steve Davis • 515-745-0015



JD 320 Skidloader  
**CALL!**



JD 2640, Diesel, Utility, Loader, 3pt.  
& P.T.O., Recond! **\$15,500**



MF 20 D, Diesel, Utility, Loader, 3pt.  
& P.T.O. **\$8,950**



1988 JD 3155, Cab, MF, Allied Ldr,  
95HP **\$31,500**



2002 CAT 465, 65HP, CAB/Air,  
MFWD, w/Loader **CALL!**



JD 7800 w/741 Ldr, 3 Function  
Joystick, 145HP **\$58,500**



Bobcat T-200 Cab/Air,  
New Tracks **\$23,500**

## LOADERS

- JD 740 w/Joystick For 7000 Series, \$7,450
- JD 720 w/4440
- or 4450 Series Mounts, \$6,950
- NH 7312 w/8670
- or 8770 Mount, \$5,850
- MF 202, Gas, w/ Ldr. \$5,950
- CIH 5240, Cab, MF, Qt Ldr., 4400 Hrs., \$39,500

## TRACTORS Coming Soon

- '09 JD 8430 w/1700 Hrs.
- JD 8420, IVT & ILS
- JD 8320R, 1700 HRS, on 50"
- 8295 R-500 Hrs.
- 8345R- 800 Hrs
- JD 7930 w/4700 Hrs., On Singles  
Short Axle \$89,500

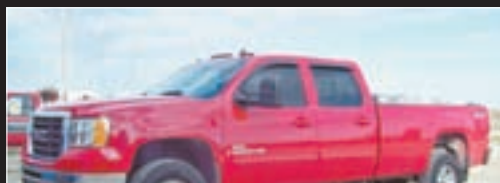
# Your Trader Goes A Long Way To Serve You

# Sam's Body Shop & Repairables

Hwy 34 • New London, IA • 1-800-313-1652 • 1-319-367-5214



2002 GMC 3/4 Ton 4x4, Leather,  
Loaded, V8 Auto, 230K Miles,  
New Tires  
**Ready To Go \$8,000**

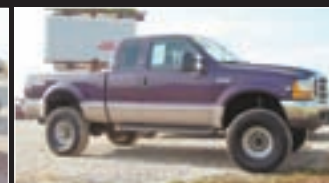


2007 GMC 3500,  
4 Dr., Duramax  
Diesel, Leather,  
Loaded,  
Navigation  
System, Sunroof,  
Good Title

**No Trade  
\$25,500**



2005 Chevy 3/4 Ton, 4x4, Quad Cab  
LS V8, Auto, 128K Miles, Nice Truck  
**Ready To Go \$13,200**



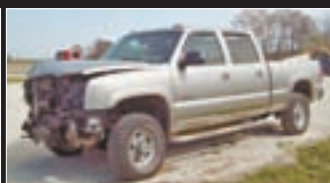
1999 Ford F250 4x4, 7.3 Diesel  
Auto, Leather, Loaded,  
Lift Kit Wheels & Tires,  
**Ready To Go \$8,000**



2003 Chevy 3/4 Ton 6.0 Liter Auto,  
4x4, 110K Miles, New Brakes &  
Tires, Boss V-Snow Plow  
**\$14,900**



2004 Chevy Silverado, 6.0 Liter,  
Auto, 4x4, 112K Miles, Left Side  
Damage Runs & Drives  
**AS IS \$8,000**



2003 Chevy Silverado 2500 HD  
Diesel, Auto, 4x4, Leather, Loaded,  
New Injectors, 160K Miles  
**AS IS \$9,250**



2007 Chevy 3/4 Ton 4x4, Duramax  
Diesel, Auto, Left Side Damage,  
100K Miles  
**AS IS \$17,200**



2008 Pontiac G5, 4 Cyl., Auto  
42K Miles, Good Title,  
Light Front Damage  
**AS IS \$5,400**

Repaired Price Available On All Vehicles! [www.samsbodyshop.net](http://www.samsbodyshop.net)



Sammon's  
Auto Sales

New & Used Tires  
Used Glass

800-371-7788  
319-258-7712

## MIKE'S GAME BIRDS

2464 Benton Ave  
Mt. Pleasant, IA  
**319-696-1037**

Pheasant, Chukar, Quail!  
We Have Birds to Train  
& Freshen Your Dogs.  
Don't Let Low Bird Count  
Ruin Your Day  
We Can Provide Birds  
to Enhance Your Hunting!





**Bluff Creek Archery**  
641-932-2422  
117 Washington Ave East • Albia, IA  
Archery Supplies • Hoyt Bows & Fuse Accessories  
Easton & Beman Arrows  
Hoyt Bows, Hawk Series • \$50 Rebate From Hoyt  
Complete Line Of Muddy Outdoors Tree  
Stands, Ladder Stands & Safety Harness  
New 2011 Hoyt Bows Are Here and In Stock  
Come In and Check them Out!  
HOURS  
Weekdays 9:00 AM - 2:30 PM  
4:00 PM - 7:30 PM  
Saturday 9:00 AM - 7:30 PM  
Sunday 1:00 PM - 6:00 PM  
Closed Wednesday



13th Annual Automotive  
**Swapmeet**  
Feb. 18&19, 2011  
8am-6pm Friday  
8am-4pm Saturday  
Boone County Fairgrounds  
Columbia, MO  
General Admission  
Friday \$5  
Saturday \$5  
Booth prices 10X10 \$40  
10X20 \$75 Rolling Stock \$15  
"Often imitated, never duplicated"  
For more information call  
573-489-4762 or visit us at  
GSPromotions.net



**Kollision Korner**  
504 S. Drake Street Bloomfield, IA 52537  
641-664-2648  
2010 Buick  
LaCrosse CXL  
Only 6,500 Miles  
Sedan, 4 Dr  
Leather  
OnStar  
**\$22,450**



**THOMAS BUS** 5636 NE 14th Street  
Des Moines, IA  
515-265-6056  
**SALES OF IOWA, INC.** 800-362-2092  
www.thomasamerican.com • info@thomasamerican.com  
7:00-5:00 M-F • Saturday by Appointment Only  
Over 400 Trailers In Stock! • Iowa's Largest Trailer Dealer!

 <b>Stahl Car Dolly with Tie-down Straps 26 in Stock</b> Starting at \$997	 <b>New Aluma 7800 Car Trailer All Aluminum, Aluminum Wheels, 4 Tie-Downs Brakes on Both Axles</b> 16' \$3,955 18' \$4,055
 <b>Big Tex 14-LX-14 83" x 14' Dump Trailer 14,000# GVWR Scissor Hoist LED Lights 3 Way Gate Skidloader Ramps</b> 4 & Available \$5,995	 <b>Midsota Dump Trailer 15,400 lb. GVWR, LED Lights, 7-Gauge Steel Floor, Rugby 8-ton Truck Hoist, 17" Stock</b> 80"x12' \$7,495 80"x14' \$7,995
 <b>Take It EZ Mini Toy Haulers Only 2 Left</b> <del>\$9,500</del> \$9,105 Snowmobile Trailer	 <b>Aluma 7'x24' Front &amp; Rear Ramp Doors 6'6" Interior Height 2 Fuel Doors 4 Ski Bars</b> \$11,791
 <b>New Aluma 8112 81"x12' ATV, Motorcycle or Mower Trailer</b> \$1,895	 <b>Aluma 8610T 2 Place Tilt Bed Snowmobile Trailer</b> \$1,195
 <b>Aluma 8220 Tilt Bed Car Hauler 82" x 20' 7K GVWR, Brakes On Both Axles, All Aluminum Construction, Aluminum Wheels</b> 1 In Stock \$5,527	 <b>2011 Wells Cargo TC Trecker 7'x14' Tandem Axle, Ramp Door, Side Door, Stoneguard, 4 D-Rings, Sidewall Vents, LED Tail Lights, Radial Tires, Polished Alum. Rear Trim</b> \$3,898

**FAIRFIELD • WASHINGTON • OTTUMWA**



John Deere 9770

NEW John Deere 7730

John Deere 9660

**TRACTORS**

Low Interest Available

NEW JD 7730, 2WD	SPECIAL PRICE (F)
'10 JD 8320R, MF, 620x46 Dis, 375 Hrs	\$197,500 (F)
'10 JD 8295R, MF, 480x50 Dis, 315 Hrs	\$189,500 (F)
'10 JD 8225R, MF, 480x46 Dis, 219 Hrs	\$149,500 (W)
'10 JD 8320R, MF, 480x50 Dis, Fls, 636 Hrs	\$210,000 (W)
'09 JD 8230 MF, 480x46 Dis, 750 Hrs	\$149,500 (F)
'09 JD 7730 MF, AQ, 1480 Hrs	\$118,500 (F)
'09 JD 6430, DS, MF w/673 Ldr, 680 Hrs	Coming (F)
'09 JD 6430 MF, PQ, 460x38, 673 Ldr, 540 Hrs	\$71,500 (F)
'08 JD 8430, MF, 620X46 Dis, HID, 1100 Hrs	\$177,000 (W)
'08 JD 5625 OS, MF, W/Ldr, 486 Hrs	\$41,500 (F)
'08 JD 5325 OS, MF W/542 Ldr, 185 Hrs	\$39,500 (F)
'07 JD 8230, MF, 480x46 Dis, 933 Hrs, IIs	\$53,500 (W)
'07 JD 8230 MF 480x46 Dis, 645 Hrs	\$142,500 (F)
'03 JD 8120 MF, 18.4x46 Dis, 2469 Hrs	\$107,500 (F)
'02 JD 9220 OS, 620x42, 3200 Hrs	\$139,500 (F)
'02 JD 9120, 4WD, PS, 20.8x42, 3 Pt, PTO	\$126,500 (W)
'02 JD 8520T, 24" Trks, PTO, 3 Pt, 3200 Hrs	\$110,000 (W)
'02 JD 8120 MF, 18x4x32 Dis, 3200 Hrs	\$99,500 (F)
'00 JD 6210 L, Open S, PQ, 640 Ldr, 540 Hrs	\$34,500 (F)
'98 JD 8300 MF, 18.4x46 Dis, 3 Hyd, 5100 Hrs	\$91,500 (F)
'98 JD 7810, MF, PQ, 18.4x42, 5325 Hrs	\$59,500 (W)
'97 JD 9200 4WD, 3 Pt, 20.8 x 38, Dis, 4650 Hrs	\$79,500 (F)
'97 JD 8100, MF, 18.4x46 Dis, 5500 Hrs	\$72,500 (W)
'97 Cat 55, 32" Track W/Pto, 4700 Hrs	\$62,000 (F)
'96 JD 7800 2WD, PS, 18.4x42, 4835 Hrs	Coming
'95 JD 8300 MF, 20.8x42 Dis, 3995 Hrs	\$76,500 (F)
'92 JD 8760 4WD, 18.4x42 Dis, Hitch, PTO	\$85,000 (W)
'92 JD 4455, 2WD, QR, 18.4x38	\$37,500 (W)
'92 JD 4055 PS, 2WD, 6000 Hrs	\$42,500 (F)
'89 JD 4455, 2WD, 18.4x38, 5000 Hrs	\$42,500 (F)
'81 JD 4840 2WD, 20.8x38 Dis, 6000 Hrs	\$24,500 (F)
'77 JD 4430, 2WD, PS, 18.4 X 38, 7950 Hrs	\$17,500 (W)
'74 JD 4230 SGB, SR, DH, 6500 AC Hrs	\$14,900 (F)
'74 JD 2630 OS W/48 Loader	\$10,500 (W)
'69 JD 2020, Gas, SR, Rev, 16.9x28, 5876 Hrs	\$7,500 (F)
'64 JD 3020 Gas, PS, TA 26 Ldr, 7400 Hrs	\$7,750 (W)
'63 JD 3010 Gas, NF	\$6,950 (O)

**COMBINES (engine hours)**

\* Special Low Rate Financing or Waivers

'10 JD 9670 STS, 800x32, 2WD, 400 Hrs	\$259,500 (F)
'10 JD 9570 STS, 800x32, RWD, 365 Hrs	\$216,500 (F)
*'08 JD 9770 20.8x42, RWD, 750 Hrs	\$238,000 (F)
'07 JD 9660 STS 20.8X38 Dis, 2WD, 830 Hrs	\$198,500 (W)
'07 JD 9860 STS, Dis, Rwd, 1200 Hrs	\$215,000 (W)
'07 JD 9560 STS, 30.5x32, 2WD, 603 Hrs	\$179,500 (W)
*'06 JD 9660 STS 20.8X42 Dis, RWD, 1182 Hrs	\$190,000 (W)
*'05 JD 9660, 20.8x38 Dis, RWD, 1300 Hrs	\$185,000 (F)
'05 JD 9560 20.8X38 Dis, RWD, 1110 Hrs	\$169,500 (F)
'05 JD 9560 STS, 800x32, 2WD, 1333 Hrs	\$153,500 (W)
'04 JD 9760 STS, 710 Dis, 2450 Hrs	\$142,500 (F)
'04 JD 9560 STS, RWD, 1350 Hrs	\$169,500 (F)
*'99 JD 9510 30.5X32, 2WD, 2800 Hrs	\$69,500 (W)
*'98 JD 9410, 2WD, 24.5x32, 1800 Hrs	\$74,500 (F)
*'97 JD 9500 30.5x32 2WD, 2730 Hrs	\$49,500 (W)
*'90 JD 9500 30.5x32 RWD, 3800 Hrs	\$49,500 (F)
'90 JD 9600 30.5X32, 2WD, 3800 Hrs	\$39,500 (F)

**PLANTERS & DRILLS**

'10 JD 1790 16/31 UMC CCS	\$110,000 (W)
'06 JD 1790 12/23 CCS, UMC	\$80,000 (W)
'03 JD 1790 16/31 CCS, UMC, 350 Mon	\$80,000 (W)
'08 JD 1770 NT, 24R, CCS, CC, 350 Mon	\$135,000 (W)
'08 JD 1770 NT 16r, 1.6, Fert	\$82,500 (W)
'07 JD 1770, 16R, 1.6, Lq, Fert, 350 Mon	\$77,500 (W)
'04 JD 1770 NT, 24R, CCS, RC, 350	\$112,500 (F)
'03 JD 1770 16R30, CCS, UMC	\$57,500 (F)
'97 JD 1770, 16 R, 1.6, RC, 250	\$47,500 (F)
'97 JD 1770, 16R, 1.6 RC, 250	\$42,500 (W)
'97 JD 1770, 12R, 1.6, L Fert, Single Disk	\$39,500 (F)
'09 JD 1760, 12R, 1.6, RC, 350 Mon	\$49,500 (W)
'02 JD 1760, 12R, 1.6 Combo Till, 250 Mon	\$39,500 (W)
'00 JD 1780, 16/31 1.6 UMC, Seedstar	\$42,500 (F)
'97 JD 1780 12/23, 1.6, 250 Mon	\$35,500 (F)
'00 JD 1780 8/15 3 Bu, UMC, 250 Mon	\$28,500 (F)

**TILLAGE**

'10 JD 2310 Finisher, 33.9, 4 Bar Coil	\$54,500 (F)
'09 JD 2310 Finisher, 26 W/Spike	\$51,500 (F)
'09 JD 637 Disk, 35', 24" Blades, 600 AC	\$51,500 (F)
'08 JD 512 Disk Ripper, 9 Shank W/Harrow	\$45,000 (F)
'08 Great Plains 8333 Finisher W/Spike	\$34,000 (W)
Great Plains 5300 Disk Ripper, S Shank	\$18,900 (W)
JD 726 30' Finisher W/Spike	\$24,000 (W)
JD 726 30' Finisher W/Spike	\$24,500 (F)
DMI Tiger Mate II 50, Field Cultivator, Coil Tine	\$29,500 (F)
JD 980 36' Field Cultivator, Coil Tine	\$19,500 (F)
JD 980 43' Field Cultivator, Coil Tine	\$18,500 (F)
JD 980 28' Field Cultivator, Coil Tine	\$16,900 (W)
JD 960 33' Field Cultivator, Spike	\$9,800 (F)

**LOADERS**

JD 840 Ldr, 8000 Mts	\$11,750 (W)
Westendorf WL 42, JD 4440 Mounts	\$3,750 (F)

**COMPACTS**

'07 JD 3320 OS, MF, 1710 Hrs	\$17,750 (O)
'07 JD 2320 OS, Hydro, 200 CX Ldr, 275 Hrs	\$16,500 (F)
'07 JD 2520 MF, 200 CX Ldr, 390 Hrs	\$17,900 (F)
'99 JD 4300 OS, MF W/72" DK, 1450 Hrs	\$11,500 (F)

**GRAIN PLATFORMS**

630F, 625F, CIH 1020, 930, 925, 920, 918, 220, 215	CALL (F/W)
--	------------

**JEFFERSON COUNTY EQUIPMENT - Fairfield (F) 641-472-3868**  
**FARMERS IMPLEMENT CO. - Washington (W) 319-653-6501**  
**MOWERS & MORE - Ottumwa (O) 641-682-4683**  
 Jerry 319-931-7000 • Chad 641-919-6800 • Jeff 319-461-3737 • Mitch 319-461-0097





**CHECK THIS BEAUTY OUT!**

**Under \$10,000**

C&C Cycle  
Chariton, IA • 888-475-2243  
www.cc-cycle.com

**WARNING! WARNING!**  
If You Don't Call Me Before You Sell Your Standing Timber You Will LOSE MONEY! We Have Up To 35 Years of Experience in the Industry. We Also Do Tree Services! Call Andrew Boyle @ **641-777-9333**



**'06 GMC Z71 4x4**  
5.3 Vortec, 6 CD Changer, Heated Leather, BOSE Sound, Bedliner, New Tires, 68,000 Miles, SHARP TRUCK, Was \$19,500  
**REDUCED \$17,900**  
Call **660-341-3601**

**AUTOMOTIVE**



FOR SALE: 2003 Chevy Silverado 1500 LS, Ext Cab, 4WD, PS, PB, Air, Cloth Interior, Great Looking Pickup, 107,000 Miles.  
641-919-0758 1-28

**Sturdy Buildings**  
Post Framed Buildings



<b>24x32x9</b> 2- 9x7 Overheads 1- Walk Door 2- 3x2 Windows 4" Concrete Floor <b>\$9,500</b>	<b>30x40x9</b> 2-9x7 Overheads 1- Walk Door 2- 3x2 Windows 4" Concrete Floor <b>\$12,000</b>
<b>30x48x10</b> 2- 10x8 Overheads 3- 3x2 Windows 1- Walk Door 4" Concrete Floor <b>\$15,000</b>	

Tax & Labor Included In These Prices.  
**FALL SPECIALS**  
All Other Buildings On Sale As Well!  
Call For Estimate.  
Call Today To Get Scheduled!  
web: www.sturdybldgs.com Email: sturdybuildings1@yahoo.com  
**641-856-7898 • 641-856-7899**

**Temperatures & Prices Are Falling At Fesler Auto Mall**

**Sport Utilities**

<b>'07 Avalanche</b> 4x4, Leather #9095A	<b>'07 Explorer Sport</b> Trac, 4x4, 53K #9075A
<b>'05 Explorer Sport</b> Trac, 4x4, 57K #9080A	<b>Come On, January Thaw!</b>

**Tahoes**

<b>'01 Tahoe LT</b> 4x4, Leather P10-4112A	<b>'05 Tahoe LT</b> 4x4, Leather P10-4124A
<b>'08 Tahoe LTZ</b> Loaded, Nav. #9128A	<b>'10 Tahoe LT2 Pkg.</b> Leather, 10K Miles P10-4132

**Vans**

<b>'10 Chrysler Town &amp; Country, Stow&amp;Go</b> 13K Miles P10-4127	<b>'08 Chevy Uplander</b> 7 Pass, Frt & R AC P10-4119A
<b>'05 Dodge Caravan</b> 7 Pass, 74k Miles P10-4126A	<b>'02 Ford Windstar SEL</b> Leather, Very Clean! P10-4135A

**Cross Overs**

<b>'10 Chevy Traverse</b> AWD, LT, 14K Miles P10-4136	<b>'10 Buick Enclave</b> CXL, AWD, Leather, 15K Miles P11-4138
<b>'09 Taurus X</b> 3rd Seat, FWD, SEL P10-4075	<b>'08 Equinox Sport</b> AWD 8963A
<b>'07 Ford Freestyle</b> 7 Pass, SEL #9122A	<b>'06 Chevy HHR</b> 69K, Very Clean Miles P10-4082A
<b>'10 Ford Flex SEL</b> 7 Pass, Leather, 14K P11-4140	<b>Be glad we don't have 30" of snow!</b>

**More SUV's**

<b>'08 Edge</b> 28K, FWD, SEL, V6 P10-4083	<b>'08 Ford Escape</b> 4x4, XLT P10-4096
<b>'09 Ford Explorer</b> Eddie Bauer, 4x4, 34K P10-4133A	<b>'09 Mercury Mariner</b> 4x4, Premier Pkg. #9094A

**Ford Crew 4x4's**

<b>'07 F150 Crew</b> King Ranch, 4x4 #8955A	<b>'07 F150 Crew</b> XLT, 4x4 P10-4105A
<b>'05 F150 Crew</b> 4x4, NOW \$13,558 #8948C	<b>Prices, Temperatures &amp; Snowflakes!</b>

**Chevy Crew & Ext. 1/2 Tons & Rangers**

<b>'09 Silverado</b> Crew, 4x4, LTZ #9109A	<b>'03 Ford Ranger Ext.</b> 4x4, XLT, 66K Miles #9147A
<b>'10 Colorado Crew</b> 4x4, 11K Miles P10-4059	<b>'05 Chevy 1/2 Ext.</b> 4x4, 8' Bed, 52K Miles #9092A
<b>Go In The Snow!</b>	<b>Every day is one day closer to spring!</b>

**Cars**

<b>'08 Dodge Avenger</b> SXT, V6, Sporty! P10-4116A	<b>'08 Ford Fusion</b> V6, SE, 32K #9159A
<b>'10 VW New Beetle</b> Was \$18,995 NOW \$15,858 P10-4114	<b>'05 Saturn Ion</b> Runs Good! #8980B
<b>'10 Buick Lucerne CXL</b> 20K, Leather P10-4109	<b>'10 Mercury Grand</b> Marquis LS, 8K Miles P10-4101
<b>'10 Malibu LTZ</b> Leather, 10K Miles P10-4131	<b>'08 Pontiac Grand</b> Prix SE, NOW \$10,883 #9037A
<b>'10 Chevy Cobalt</b> Only 7K Miles, SAVE P10-4125	<b>'10 Ford Focus</b> 4 Dr., Auto, Great MPG, P10-4108
<b>'10 Ford Fusion</b> 4 Dr., SEL P10-4088	<b>Think Warm Thoughts!!!</b>

**FESLER AUTO MALL**  
Hwy 34 West, Fairfield  
**641-472-3121**  
**800-422-5269**

**Vehicles Under \$10,000**

'87 F150 Pickup	\$853
'95 Olds 98 Regency V6	\$2,295
'95 Ford E350, Van, 15 Pass	\$3,595
'96 Monte Carlo	\$1,995
'01 Chevy Tahoe, 4x4, LT	\$8,995
'02 F250 Ext. Utility Box 4x2	\$5,983
'02 GMC Sonoma, S15, 4x4, Ext	\$5,883
'04 Impala LS, Silver, Leather, Sharp!	\$7,995
'05 Dodge Caravan, 74K Nice!	\$9,850
'05 Saturn Ion	\$5,995
'05 Ford Taurus SEL, 65K Miles, Nice!	\$8,995
'06 Chevy HR, Was \$11,995	NOW \$9,853

**www.feslerautomall.com • OPEN: Mon-Fri 8-5 • Sat 8-3**