
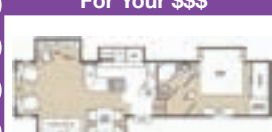
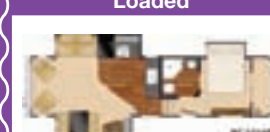



**Countryside**  
RV & Trailer Sales

**Now Is The Time To Get A Great Deal On  
Your New Or PreOwned Camper,  
Spring Is Only Weeks Away!!!**

**SALES • SERVICE • PARTS • STORAGE**

20 Miles East of Des Moines on I-80 to Exit 159 • Monday - Thursday 9:00-6:00 • Friday 9:00 - 5:00 • Saturday 8:30-1:30 • [www.csrvsales.com](http://www.csrvsales.com) • 877-674-3573

<p><b>2011 Catalina 24FBS</b> Slide Perfect Couples Unit!</p>  <p><b>MSRP \$23,015</b> <b>Our Price \$15,395</b></p>	<p><b>2011 Catalina 30BHS</b> Outside Kitchen Hickory Interior Loaded</p>  <p><b>MSRP \$29,395</b> <b>Our Price \$18,995</b></p>	<p><b>2011 Zinger 27BH</b> SUV Towable Sleeps 8 Great Value</p>  <p><b>MSRP \$20,395</b> <b>Our Price \$13,795</b></p>	<p><b>2011 Zinger 31SB</b> Center Lounge Bunks #1 Family Unit</p>  <p><b>MSRP \$31,140</b> <b>Our Price \$19,795</b></p>	<p><b>2011 Zinger 26RL</b> This Is The Perfect Unit Under 30'</p>  <p><b>MSRP \$26,325</b> <b>Our Price \$17,995</b></p>	<p><b>2010 Sunset Trail 31KS</b> SUV Towable "Families Love It"</p>  <p><b>MSRP \$34,077</b> <b>Our Price \$20,995</b></p>
<p><b>2011 Cruiser 30SKP</b> "Best Built" Patriot Edition</p>  <p><b>MSRP \$49,680</b> <b>Our Price \$33,995</b></p>	<p><b>2011 Cruiser 28RL</b> 1/2 Ton Towable Great Exploring Unit</p>  <p><b>MSRP \$42,210</b> <b>Our Price \$28,795</b></p>	<p><b>2010 Flagstaff 24RLS</b> Want To Tow A Boat? Perfect Size</p>  <p><b>MSRP \$34,595</b> <b>Our Price \$22,695</b></p>	<p><b>2011 Cougar High Country 291</b> Lite Weight, Style, Great Looking</p>  <p><b>MSRP \$47,980</b> <b>Our Price \$32,206</b></p>	<p><b>2011 Cougar 327RES</b> This Unit Has It All!</p>  <p><b>MSRP \$50,395</b> <b>Our Price \$32,431</b></p>	<p><b>2011 Cougar X-Lite 27SAB</b> Bunks 1/2 Ton Towable For Families</p>  <p><b>MSRP \$37,210</b> <b>Our Price \$25,795</b></p>
<p><b>2011 LaCrosse 305RES</b> 32" TV/DVD Table w/Chairs Swivel Chairs</p>  <p><b>MSRP \$37,055</b> <b>Our Price \$26,995</b></p>	<p><b>2010 Flagstaff 26FKSS</b> Suv Towable Cherry Wood Interior Loaded</p>  <p><b>MSRP \$31,795</b> <b>Our Price \$22,795</b></p>	<p><b>2010 Tracer 26RLS</b> 2 Tone Wood Lounge Chairs, Table &amp; Chairs</p>  <p><b>MSRP \$31,770</b> <b>Our Price \$22,995</b></p>	<p><b>2011 Bullet 246RBS</b> Fully Loaded w/Options &amp; SUV Towable</p>  <p><b>MSRP \$29,469</b> <b>Our Price \$20,495</b></p>	<p><b>2011 Bullet Premier 31BH</b> Very Spacious! #1 Family Unit Loaded</p>  <p><b>MSRP \$37,100</b> <b>Our Price \$25,795</b></p>	<p><b>2011 Cougar X-Lite 27RLS</b> 32" LCD/TV/DVD Hide-A-Bed Loaded</p>  <p><b>MSRP \$35,975</b> <b>Our Price \$23,885</b></p>
<p><b>2011 Northridge 320RLQ</b> Hickory Interior 36" LCD/TV Tons Of Value!</p>  <p><b>MSRP \$58,895</b> <b>Our Price \$39,995</b></p>	<p><b>2011 Brookstone 367RL</b> Show Stopper!! Get The Most For Your \$\$\$</p>  <p><b>MSRP \$69,778</b> <b>Our Price \$50,995</b></p>	<p><b>2011 Big Country 3250</b> Grey Gel Exterior Electric Awning Loaded</p>  <p><b>MSRP \$63,540</b> <b>Our Price \$43,995</b></p>	<p><b>2011 Elkridge 350SQB</b> 4 Bunks, TV 15 A/C Unit Fully Loaded</p>  <p><b>MSRP \$49,966</b> <b>Our Price \$39,995</b></p>	<p><b>2010 Winnebago 231C</b> Generator, Leather U-Shape TV, Loaded</p>  <p><b>MSRP \$93,995</b> <b>Our Price \$73,995</b></p>	<p><b>2011 Chateau 31K</b> Leather, U-Shape Dinette 32" TV Generator</p>  <p><b>MSRP \$89,600</b> <b>Our Price \$67,995</b></p>

*Pre-Owned Units*

<p><b>2005 Wildwood 29BHS</b> Bunks, Lg. Slide 1/2 Ton Tow</p>  <p><b>Was \$15,695</b> <b>NOW \$13,995</b></p>	<p><b>2007 Land Roamer 29RL</b> Rear Lounge, Lg Slide Bed Slide</p>  <p><b>Was \$26,600</b> <b>NOW \$23,395</b></p>	<p><b>2007 Starwood 28BHS</b> Bunks, Sofa Slide SUV Tow</p>  <p><b>Was \$18,595</b> <b>NOW \$14,995</b></p>	<p><b>2006 Cougar 276RLS</b> Rear Lounge, Lg. Slide, 1/2 Ton Towable</p>  <p><b>Was \$20,995</b> <b>NOW \$18,395</b></p>	<p><b>2004 Cedar Creek 28RL</b> Rear Lounge Large Slide, Like New</p>  <p><b>Was \$20,995</b> <b>NOW \$17,595</b></p>	<p><b>2000 Jayco Designer 29'</b> Rear Kitchen, 2 Slides Very Nice</p>  <p><b>Was \$16,795</b> <b>NOW \$14,995</b></p>
---	--	---	---	--	---

**Please Visit Our Web Site [www.csrvsales.com](http://www.csrvsales.com) For More Pre-Owned Units. We Have Over 40 On Hand**









**Red Line Pasture Harrows**

Red Line Pasture Harrows in 24-34 Foot Widths. Call Us For Information!

**BRAD'S WELDING SHOP • 12673 Almond Ave • Marceline, MO 64658**  
bradsweldingshop.com

**660-376-1158**



**\$6,500 OBO**

**John Deere 7000 Series Cab**  
Complete Wiring Harness No Interior Some Minor Damage

**660-216-1460**



**Sale \$15,995**

'10 Chevy Impala LT, V6, Low Miles, 5 In Stock!

**800-322-8888**

**WATTERS**

878 Hwy 65-69 N • Indianola  
www.wattersautoland.com



**2006 Ultra Glide w/ New FBI Conversion, Very Nice! Black & Red, 20K**

**\$28,995**

**C&C Cycle**  
Chariton, IA • 888-475-2243  
www.cc-cycle.com

**MISC**

**FOR SALE: Heavy Duty Pallet Shelving, 8' Tall Towers, 34" Deep Shelving With Wire Support, 134" Wide Shelf; Skid Steer Metal Track for 12" Wide Tires, Like New; Organic First & Second Cutting Grass Hay in 4'X6' Bales Stored Inside. Fairfield Area. 641-919-8418 2-18**

**STOVES & CHIMNEYS:** Chimtek, Masonry or SS Class A Insulated Chimneys In Stock! Wood & Coal Stoves In Stock!

**Gingerich Stoves & Plumbing**  
19041 180<sup>th</sup> St, Bloomfield, IA 3/4 Miles East of Drakesville VM 641-664-2814 2-18

**PERMIT TO CARRY CLASS:** Ottumwa, IA, Isaac Walton, Wed, February 23, 6 PM to 10 PM; Sat, February 26, 8 AM to 12 PM; Sat, March 12, 8 AM to 12 PM; Sat, March 26, 8 AM to 12 PM, \$30. Pre-Registration. 641-799-0764 3-18 641-777-6091

**WE RESOLVE SETTLE OR FIND SOLUTIONS:** To Business, Personal Conflicts or Problems. Your Mediators Inc. Call 515-274-4066 2-25

**WANTED CUSTOM SAWING:** We Turn Logs Into Lumber With A Woodmizer Portable Sawmill. 319-494-5546 TFN

Sell It In The Hawkeye Trader

**Boyle Logging & Tree Service**

We Cover All of SE Iowa  
Specializing in *Hard-to-Get-To* Removal, Skid Loader Work, Brush & Clean Up, Log Work and Standing Timber Sales

Call Andrew Boyle @ **641-777-9333**

**The Judge Says Go to Court For**

**FREE - 90 DAY WARRANTY W/PURCHASED AS MARKED!!!**

**IRS INVENTORY REDUCTION!**

**SALE**



'96 Ford F-250 Diesel, 5 Spd., Heavy Duty, 19 MPG, Extra Clean  
**\$3,795**



'01 Saturn SC1, Super Gas Saver, Auto, PW, PL, Sunroof  
**\$3,995**



New Holland L553 Diesel 2 to Choose From Runs Good! Starting @ **\$5,995**



'02 Dodge Grand Caravan PW, PL, 3rd Row Seating  
**\$3,995**



'99 Ford Contour, 4cyl, Auto, NICE! Gas Saver, Runs & Drives Great  
**SALE! \$1,995**



2002 KIA Sportage, 4x4, 5 Spd., Low Miles, Excellent MPG, Newer Tires  
**\$3,495**



1987 Ford Ranger, Low Miles, 5 Spd., Runs & Drives Great, Excellent M.P.G.  
**\$1,495**



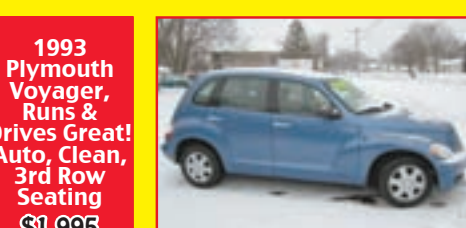
'95 Chevy 4x4 350, Auto, Hwy Miles, Runs Perfect,  
**SALE! \$2,995**



'95 Pontiac Grand Am V6, Auto Very Clean & Nice to Drive!  
**SALE! \$2,295**



1993 Plymouth Voyager, Runs & Drives Great! Auto, Clean, 3rd Row Seating  
**\$1,995**



'06 PT Cruiser Hwy Miles Well Equipped Super MPG  
**\$5,995**



'96 Chevy 4x4, 350 Auto 129K Always Starts!  
**SALE! \$4,495**

**WARD'S REALTY**

Lancaster, MO  
**660-457-8538**

If You Are Buying or Selling ....Give Us a Call!!

3 Bedroom, 2 Bath Home in Lancaster, MO  
2 Car Attached Garage, 24' x 36' Shop

GIVE US A CALL! WE'VE GOT BUYERS LOOKING FOR LISTINGS!

www.wardsrealtymo.com

**WARD'S REALTY**

Lancaster, MO  
**660-457-8538**

If You Are Buying or Selling ....Give Us a Call!!

Small Lot w/2 Yr Old Garage, Approx 24'x24' Is Along Hwy A. Nice Place to Put a Home.

GIVE US A CALL! WE'VE GOT BUYERS LOOKING FOR LISTINGS!

www.wardsrealtymo.com

**COURT AVENUE MOTORS**

Adel, IA • Mark Cadwell

**515-993-4478 Hwy 6**  
**515-993-3378 Hwy 169**

Go to Court for a **FAIR DEAL!**

**PRICES SLASHED**



# METAL ROOFING & LUMBER

## Complete Pole Building Packages

Horse Barns, Arenas, Cattle Sheds, Agricultural Buildings, Garages, Reroof Houses & Barns, Re-shingle all types of buildings. All types of rim especially made for your job 22 colors to choose from

**Gingerich Building Materials, LLC**  
Serving all of South Central Iowa.

**FREE ESTIMATES 641-203-0624 ASK FOR DAVID**

## Long Creek Auto

30440 150th Street • Stockport, IA 52651

641-919-9081



2008 Ford Edge Limited Full Power & Heated Seats, Front & Rear Sunroof, Navigation, Only 55K Miles, Salvage Title **\$15,500**

# WARNER REPAIRABLES

**CORBY WARNER 641-919-4676**  
**CURT WARNER 641-919-4677**



**\$18,950**

2008 Ford F-150 XLT Q-Cab, 4x4, 29K Miles, Ready To Go!



**\$9,350**

2003 Ford F-150 Lariat Super Crew 4x4, 93K Miles, Loaded, Ready To Go!

2002 Ford F-150 Lariat Q-Cab Step-Side, 4x4, 130K Miles Loaded, Ready To Go! \$6,550

# Bloomfield Tractor & Implement **BTI**

## GRAND OPENING

**Friday, Feb. 25**

**Bloomfield**

7:30 a.m. - 9:30 a.m.

Breakfast (sausage, pancakes, & eggs)

8:45 a.m.

Grand Opening Ribbon Cutting

9:00 a.m.

Tractor Ride to

Centerville Tractor & Implement

**Centerville**

11:00 a.m. - 1:00 p.m.

Lunch

(hamburgers, baked beans, & potato salad)

11:30 a.m. Mark Pearson Live on WHO 1040 AM, The Big Show

**Thursday, Feb. 24**

Planter and AMS (Ag Management Solutions)

Clinics

Bloomfield 10:30-11:30 a.m.

Centerville 1:30-2:30 p.m.

**Parts Specials**

February, 23, 24, & 25

## Sigourney Tractor & Implement

**STI**

Purchased Bloomfield/Centerville Equipment Effective January 1, 2011



JOHN DEERE

## CTI Centerville Tractor & Implement

23931 Hwy 5 Centerville, IA  
(641) 437-4100 • (800) 284-8656

## Bloomfield Tractor & Implement **BTI**

641-664-3500 or 1-800-926-0645 Hwy. 2 & 63 South Bloomfield, IA



Be Sure To Stop By Our Booth and Register For The Sofa Mate



Ask Us About Our Show Purchase Discounts

## Old Classic Sleigh Collection



See Us For All Your Furniture Needs  
Bedroom Sets • Dinette Sets • Glider Rockers  
Mattresses • Living Room Sets • **AND MORE!**

1 Mile East Of Drakesville  
**VM (641)664-0207**

Hours: Monday-Saturday • 9:00 AM To 5:00 PM

Motors • Engines • Transmissions • Parts • Super Duty & Ranger

## RAMER TRUCK SALES



2005 Case Skid Loader 465, 548 Hrs., Cab AC/Heat, 2 Spd, Quick Attach, Ride Control, Good Rubber, Nice Machine **\$34,900**



Bobcat Post Hole Digger w/12" Auger **\$2,200**



Pallet Forks **\$500**



The Boss Hydraulic Blade Snow/Dirt **\$3,250**

Gorin, MO • 660-282-1002 • 660-341-6140 • No Sunday Sales



# SERVICE DIRECTORY

## AL'S TRANSMISSION SERVICE

**Automatic Transmission Specialist Certified Technician**



Hwy 92 East, Indianola, IA  
515-961-3899 800-506-3899

## METAL ROOFING



Installing Metal Roofing On All types of Buildings

Houses & Barns Commercial & Residential

Customer Satisfaction Is Our Goal!

### WAGLER BUILDERS

CALL TODAY FOR A FREE ESTIMATE: 641-777-5000

EMAIL: [waglerbuilders@hotmail.com](mailto:waglerbuilders@hotmail.com)  
www.waglerbuilders.com

Visit Us On The Web @  
[www.hawkeyetrader.com](http://www.hawkeyetrader.com)

## M & W WELDING, INC.

MERVIN MCDANEL

7003 278th Street • Moravia, IA 52571 • 641-724-3371

6 & 7 Bale Trailers

6 & 8 Bale Trailers



Over 30 Years Experience

Builder of 6 & 8 Bale Trailers, Build & Rebuild Livestock and Horse Trailers  
Sales & Installation of Gooseneck & Trailer Hitches and Trailer Parts, Sales & Service  
Also Bale Stabbers For Front of Tractor Loaders & Skid Loaders. A Full Service Shop!

## HOLTON'S TIRE REPAIR

On the Farm • Semi • Tractor • Auto

### KEVIN HOLTON

MEMPHIS, MO

660-465-2417 Home

660-216-2309 Cell



"Your After Hours Tire Repair"



## Car Country Auto Wrecking

• Quality Used Parts  
We Buy Junk Cars & Trucks  
No Charge For Disposal Of Appliances



Scrap Metals, Waste Oil, Etc.

(641) 792-8854 Or 1-800-252-2886

2713 Hwy 14 South Of I-80,  
Newton, IA 50208

Just South Of I-80 @ Exit 164



2008 Honda GL1800, Just Built, Motor Trike,  
Independent Suspension, Air Ride, Raked  
Front, Pearl White

C&C Cycle  
Chariton, IA • 888-475-2243  
www.cc-cycle.com

AMEGA: USED DOUBLE WIDE HART:  
This home won't last!  
Amega Sales  
Ashland  
573-303-5803

FOR SALE: Springfield XD 40 Subcompact; Springfield XDM 45; Springfield XDM 9; Ruger P95; Marlin 9 Camp Gun; Sig 9; Glock 19 9MM; Baby Eagle 9MM; Kimber 45; Para Ord 45; Taurus 45; Ruger 22 MKIII; Remington 204; Ruger ICP 380; Bersa 380; Diamond Back 380; Ruger Red Label 20; Browning Citori 20; High Point 40; Smith Wesson 38 Bodyguard; Marlin 30/30; 350 Other New and Used.

FOR SALE: Central Boiler E-Classic OUTDOOR FURNACES, Cleaner and Greener, 97% Efficient. EPA Qualified. Call Today!  
641-722-3641 2-18

FOR SALE: 25 KW Generator, \$1,500.  
Call 319-750-5252 or 319-469-4071 2-18

BURN SEASON IS FAST APPROACHING: Let Us Help With Your Prescribed Burn This Spring. 15 Years Experience.  
Habitat Services LLC  
660-216-6842 3-4

WANTED TO BUY: Indian Artifacts, Arrowheads, Axe heads, Tomahawks, Spears, Stone Tools. Cash Paid, one piece or whole collections.  
CALL 309-230-3992 3-4

FOR SALE: 2 Concrete Power Buggies.  
641-660-0109 2-18

HELP UNINSURED DIABETICS & GET FAST, EASY CASH: For Your Extra, Unopened, Unexpired Test Strips! Open 24/7.  
Call Kim.  
1-800-846-8191 2-25

FOR SALE: 2-Rail, 3-Rail, 4-Rail, Vinyl Fence, Vinyl Decking & Railing.  
641-722-3641 TFN



## TWO AUCTIONS BY FAHEY

"Serving the Upper Midwest Since 1947"

### ABSOLUTE RETIREMENT AUCTION

Online & Live

S & S Construction, Inc.

Sat. Feb. 26, 2011 - 9:00 a.m.

Located: 4814 S.E. PP Hwy, Holt, MO--25 miles N of Kansas City, MO

Caterpillar Equipment, Trucks, Tractors, Trailers, Tools, & More!



**Heavy Equipment:** '70 Dresser TD8E-PS dozer, 8' blade; '83 Cat D7G dozer, 12' blade; **International** TD250 dozer, 13' blade; '79 Cat 955L track loader, 1.75 cu. Yd. bucket; '62 Cat 922A Traxcavator wheel loader, 83" bucket; **Case** Drott 40 Trackhoe; 24" Trackhoe **Easo** bucket, 24"; 28" Trackhoe bucket; '65 Cat 619 Series C scraper; '62 Cat 619 Series C scraper; '61 Cat 619 Series C scraper for parts; **Cat** No. 12 motor road grader; double 4' drum sheep foot roller; **Crust-buster** off set disc; **Otter** 10' front mount tractor dozer blade;  
**Heavy Trucks:** '87 Ford LTL9000 tandem ax. dump truck, 13K showing; '95 Ford Aeromax L-9000 day cab, 83K; '98 Ford F550 flatbed; '89 Ford F250, 4x2 diesel; '88 Ford F250 diesel, 58K; '85 Kenworth cab over; '70 White Freightliner; '65 Kenworth day cab; '67 International Load Star 1600, V-8, flatbed; **International** Load Star day cab, single ax.; **Trailers:** '74 Load King 25 ton lowboy, 96" x 18'; '92 Timppe Super Hopper bottom grain trailer; '91 Hull car trailer, tandem ax; **Trailmobile** step van semi trailer; '47 Fruehauf alum van semi trailer, storage; single ax. steel semi van trailer; **Trailmobile** tandem ax. semi van trailer; 6 bale bumper hay trailer;  
**Tractors:** **International** 1066 tractor; **Farmall** C tractor; '52 **IH** Harvester **Farmall** MD tractor; '50 **IH** Farmall MD tractor for parts;  
**Farm Equipment, 3 pt. Equipment and Miscellaneous:** **Kuhn** 8', 3 pt. disc mower; 3 pt. bale spike; 2-**Hesston** round hay balers; **NH** side del. hay rake; **Hotsy** hot water pressure washer; **Miller Bobcat** 225G Plus port. Welder, gas; **Lincoln** welder; engine hoist cherry picker; Standard Ind. Air compressor; Bulk oil barrels; **Craftsman** Trac drive snow blower; **Walker** HD truck trans jack; 3 pt. broadcast spreader; wheel balancer; **Mikasa** jumping jack; **Wrightway** 110v hoist; Overhead A-frame lift;

Collector Car: '75 Ford Thunderbird, leather seats, elec. sun roof, stored inside;

Large asst. hand and power tools; Huge asst. shop equipment, Cat. parts, shop books;

Inspection: Wed. thru Fri, Feb. 23-25 from 9 a.m. to 4 p.m.

All items sold as-is.

## MID COUNTRY CONSIGNMENT

Online & Live

Sat. March 19, 2011

Located: 2488 S.E. Hwy 33, Lathrop, MO

Now Accepting Consignments of All Types:

landscape & light construction equipment  
ag equipment  
heavy equipment  
golf course maintenance equipment  
commercial lawn care equipment  
golf carts

utility vehicles  
skid loaders & attachments  
trenchers  
consumer mowers  
trailers

FREE advertising!

Online bidding on major items & more details for both auctions at  
[www.faheysales.com](http://www.faheysales.com).

Auction Manager: Chris Riley, Kearney, MO

816.365.7565

FAHEY AUCTIONEERS - 888.234.3510

Cash, Check, (V, MC w/4% convenience fee)

Turning your assets to cash in a global market.



Jim Fahey, Auctioneer  
MO Licensed Auctioneer  
MN Lic. #: 43011001  
Registered WI Auctioneer Lic. #: 2401-052



# Land

129 Acres m/l Madison County, Iowa



Sunday Aft. February 27, 2011  
2:00 p.m.

2451 Elderberry Ave. Winterset, Iowa

**Located next to Roseman Covered Bridge!!**

**General Description:**

Offering 129 acres m/l with 63 acres tillable. Ave. CSR rating is 42. Improvements include 2 story, 4 bedroom home & 2 baths. Approx. 1778 sq. Ft. Living space!

**In addition:** 1044 sq. Ft. Commercial building currently utilized as a gift shop. 45' x 62' steel utility building. All nestled in beautiful timbered surrounding bordering the river at the corner of Elderberry Road and Roseman Bridge Road.



**FSA Information:**

Cropland	63.2
Corn Base	25.1
Corn Direct Yield	97
Bean Base	28.6
Bean Direct Yield	27

Terms: Cash, 10% down payment day of auction. Balance due at closing on or about 30 to 45 days. Possession at closing. Buyer will have possession for 2011 crop year.

## Wyman Wilson Estate

**Daugherty Auction and Real Estate Services, Inc.**  
Kelly Daugherty owner auctioneer . Chad Daugherty, Brad Jones auctioneers  
Adel, Iowa (515) 993-4159 ~ [d\\_auction@hotmail.com](mailto:d_auction@hotmail.com)  
See us on the web at [www.daughertyauction.com](http://www.daughertyauction.com)

The information in this brochure is from sources deemed to be reliable but it cannot be guaranteed by Daugherty Auction and Real Estate Services, Inc.

# Auction

"We sell it the day you need it sold!"

**CDH: HART DOUBLE  
WIDE: WOW!!  
Columbia Discount  
Homes  
573-303-5513**

**R&J MEDIA BLASTING AND PAINTING:** We offer a full line of media blasting from sand to soda. We can make your old car, truck, trailer, tractor, heavy equipment, etc. look new again. We also remove graffiti, mold, etc from buildings, monuments boats, wood, statues. If there is something on it we can take it off. Mobile service no extra charge. Licensed & insured. Call Richard.  
**660-216-4530 2-25**

**FOR SALE:** Late Model Curtis Snow Plow Equipped With Low Profile Quick Attach Mounts, Fits Ford 1998-2010, Is In Excellent Shape, \$1500.  
**815-260-3514 2-18**

**GUN SHOW:** March 11-13, Moberly Moose Lodge, Admission \$5. 6 ft. tables, \$20, 8 ft. tables, \$30.  
**660-277-4868 or 573-999-5788 3-11**

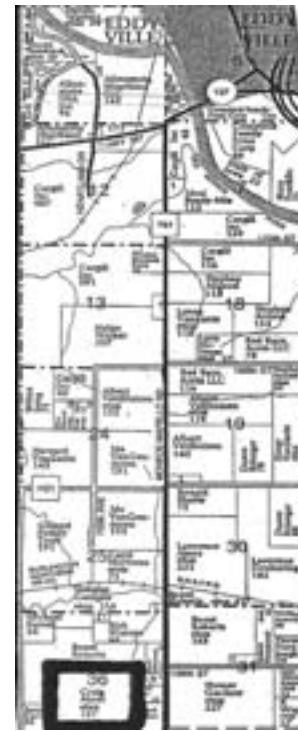
**NEED INSULATION?:** Have blower for attics/ceilings. Commercial, ag., residential. New/existing buildings. Call for quote.

**Truman Gingerich  
VM 641-664-1207 4-18**

## LAND AUCTION

**SATURDAY, FEBRUARY 26, 2011 • 10:00 AM  
SALE TO BE CONDUCTED AT THE PROPERTY LOCATED  
5 Miles South of Eddyville, Iowa on Monroe-Wapello Road,  
then West 1/4 Mile on 160th Street OR  
4 Miles North of Hwy. 34 on Monroe-Wapello Road,  
then West 1/4 Mile on 160th Street**

Auction Signs Will Be Posted



**SECTION 36, PLEASANT TOWNSHIP,  
MONROE COUNTY, IOWA  
160 ACRES M/L**

This tract of land includes 124 contiguous, tillable acres; 2 smaller ponds and timbered draws. Situated ¼ mile west of county paved road, selling as 1 unit.

TERMS: 20% down day of sale, balance in cash upon delivery of a Warranty Deed, accompanied by Abstract of Title showing merchantable title. Real estate taxes will be pro-rated to possession date, possession given upon settlement.

**REAL ESTATE WILL SELL AT 10:00 AM**  
For further particulars or an appointment to inspect the property, please call the auction company: 641-682-5465.

**Announcements made day of sale take precedence over any advertising.**

**CRAIG & MARY JO AKERS, OWNERS**

## 80 Acres M/L Public Auction

**Saturday, March 5th, 2011 • 10:00 AM**

**Pillars Steak House • Leon, IA**

**Tract 1:** 80 Acres M/L. Farm is located in northern part of Decatur County. This is a very nice, well taken care of farm that has had all the cleanup work done. Farm has 60.3 Tillable Acres. Farm also has newer exterior fences and cattle working facility. Property has two buildings. First is a steel building with cement floors and is in good shape. (Approx size is 30x50). Second building will make good calving shed or working building. This is a very nice 80 that would make for a great investment piece as well as add on for local farmers.

**Gross Taxes:** \$838

**Terms:** Cash 10% Day of Sale

**Water:** Rural At Road

**CSR:** 33.5

**Possession At Closing**

**Farm Programs Details:** Tract 1, 60.3 acres tillable corn base acreage, 56.0 acres direct tract yield 103 cc tract yield 103. Direct annual payment \$1,344

**Legal Description:** Tract 1 east 1/2 mile, northwest, 1/4 section, 32 Franklin Plat Decatur County, Iowa. Exact legal to be taken from abstract

**Directions to Farm:** From Leon take Hwy 69 north to 150th street, west 1/4 mile. Property is on southside of road

**Real Estate Agent Adam Curran • 641-203-2931  
adam@peoplescompany.com**

**Go To: [www.peoplescompany.com](http://www.peoplescompany.com)  
Listing No# 1690**



**TRACTORS**

JD 4640 QR; 4630 PS; '69 4020; 850; IH 1586 (3300 HRS V-NICE); MF 2705; CASE 580 SL BH & LDR; JD 90 SS; '04 POSI TRACK RC 100 CHA, 1400 HRS; CASE 586G FORK LIFT.

**COMBINES-HEADS**

JD 9510(NICE); '93 9600; '83 8820; 6620 T II SIDEHILL; 6620 TII; '84 6620; '83 6620 SIDEHILL; '82 6620; HEADS: JD 693; 643' S; 620; 920'S; 220; 216; C-IH 1020 20'; 25 NEW M D HEAD TRAILERS.

**IMPLEMENTS**

JD 1770 16R PLANTER; WHITE 6900 11R SPLITTER UNIT; KINZE 3650 16/31; SUNFLOWER 6311 16' FINISHER; C-IH 4800 32'; JD 550 MULCH MASTER 19'; C-IH 3900 26' ROCK FLEX DISK 14'; JD 158 LDR; DYNAMIC 310 WOOD CHIPPER; NEW BRENT 644 WAGONS.

## COLO IMPLEMENT



**COLO, IA**

**641-377-2355**

**[www.dailyauctioncompany.com](http://www.dailyauctioncompany.com)**

**NEEDED:**

**GOOD USED FARM & CONSTRUCTION EQUIPMENT  
CALL WITH PRICE & DESCRIPTION**



**2009 Polaris**

**RZR S**

**Only 846 Miles,**

**Like New!**

**\$10,595**

**C&C Cycle  
Chariton, IA • 888-475-2243  
[www.cc-cycle.com](http://www.cc-cycle.com)**

*Auctioneers:*  
**Jim Kosman  
Roger Clingan  
Todd Carroll**

**AL MARTIN REAL ESTATE & AUCTION CO.**  
307 Church Street  
Ottumwa, Iowa  
**641-682-5465**  
[www.almartinauction.net](http://www.almartinauction.net)

## PUBLIC AUCTION

Conducted By

### AUCTIONS UNLIMITED

Since I am no longer able to maintain my home I will sell it & the following items at public auction located at 406 E. Charles Street in Moravia, IA on

**Saturday, February 26<sup>th</sup>, 2011 • 10:30 am**

**REAL ESTATE**

**(Real Estate sells to 1:00 PM)**

This is a very nice ranch style home. It has a large living room w/near new carpet, eat in kitchen, maple cabinets & gas range, 2 bedrooms-both have hardwood floors, a full bath, gas forced air furnace. Outside the kitchen is a carport/patio, a 2 car 30'x24' detached garage w/built in workbench, all situated on a 100'x150' double lot.

**TERMS:** 20% down day of sale, balance due and possession upon closing.

**AUCTIONEER'S COMMENT:** This is a very nice home ready to be moved into, a good location & always well maintained. You won't want to miss this chance. For viewing, Contact Rhea at 641-895-5375.

**CAR:** 2002 Toyota Corolla CE Car, 4 Dr, Auto, Air, Cruise, Good Rubber, Like New Inside & Out and Only 63,000 Actual Miles.

**HOUSEHOLD:** Amana 16 Ft Refrig; Amana Gas Dryer; Whirlpool Washer; Chest Type Freezer; Emerson Microwave; Kenmore 110 Air Conditioner; Sanyo 26" TV; VCR; TV Stand; Green Lazy Boy Rocker Recliner; 2 Light Brown Platform Rockers; Tan Stripe Couch; Padded Footstool; Sofa & Coffee Table; Floor & Table Lamps; China Hutch; Oak Microwave Cart w/Cutting Board Top; Sm Kitchen Table & 4 Chairs; 3 Wood Dining Chairs; Desk; Full Bed-Complete & Matching Dresser, Chest of Drawers & Nightstand; 2 Twin Beds-Complete; Chest of Drawers; White Port Sewing Machine; Sewing Machine Cabinet; Wood Typewriter Table; Stepstool; Lightweight Transport Wheelchair; Walker w/Rollers & Seat; Bissell Bagless Vacuum; Pictures; Shelves; Nice Set of Stainless Steel Pans; Sm Kitchen Appliances of All Types; Lg Set of Corolle Dishes & Other Kitchen Items.

**ANTIQUES:** Sm Oak Rocker w/Leather Seat; Covered Wagon Table; 8 Place Setting & Extras of Style House China (Vanessa); Stemmed Crystal; 4 Pc Silver Coffee Server Set; Set of Community Silverware; Green Glass Coal Bucket; Mr. Bear Glass Jar Bank; Hen on Nest; Sad Irons; Kerosene Lamp; The Weir Co Crock Canning Jar w/Lid; Washtub; Cookbooks.

**LAWN & SHOP:** Murray 10HP 30" Riding Mower; Featherlight Gas Weedeater; Fert Spreader; Park Bench; Glider; Lawnchairs; Sm Wood Bench; Metal Cabinets; Craftsman Bench Vice; Asst of Elec & Hand Tools; Nice Yard & Garden Tools; Log Chain; Bu Baskets; Other Items Too Numerous to Mention. All Announcements Day of Sale Take Precedence Over Written Ad.

Go To [www.auctionsandrealtyunlimited.com](http://www.auctionsandrealtyunlimited.com) for Pictures.

## KATHRYN SHARP: OWNER

### AUCTIONS UNLIMITED

**David Zaputil  
641-724-3329**

**Richard Wilson  
641-724-9243**

**Rhea Wilson, Broker  
641-895-5375**



**Lolli Bros.**  
Livestock Market Inc.

**Special Registered Catalog**  
**Horse Sale March 4 & 5.**  
SELLING OVER 450 HEAD

\$1,000's of dollars of new & used tack & saddles!

**HOGE TACK & SADDLE AUCTION**  
Thursday March 3<sup>rd</sup>  
4:00pm

660-385-2516 • 660-651-4024  
Macon, MO

**QPH: REPOS**  
**MOBILE HOMES:**  
Steal These - Double  
Wide or Single Wide,  
Quality Pre-owned  
Homes  
573-303-5504

**FREE HEAT & WATER:** Eliminate Monthly Heating Bills With Classic Wood Furnace. No Sunday Calls.  
660-707-3866 TFN

**WANTED:** Buying WWI, WWII Military Items, German, Japanese, American, Helmets, Uniforms, Knives, Medals, Patches, Guns, Etc., Call Paul.  
515-967-4979  
8-5-11

**FOR SALE:** New 3 Pt Tillers, Heavy Duty, Gear Driven, 5 Ft. \$1,350; 6 Ft. \$1,550; 7 Ft. \$1,850; 8 Ft. \$2,050. Tiller/Seeders Available.  
660-874-4455 1-13-

**WANTED TO BUY GUNS:** Old Unwanted Guns, Ammunition, & Reloaders.  
319-470-0979 TFN

**FOR SALE:** Model 67 Winchester Pre-64 .22 Single Shot; Also Boys Rifle; Model 68 Winchester Pre-64 .22 Single Shot.  
641-680-0892  
641-675-3421  
ETFN

**STOVES & CHIMNEYS:** Chimtek, Masonry or SS Class A Insulated Chimneys In Stock! Wood & Coal Stoves In Stock!  
Gingerich Stoves & Plumbing  
19041 180<sup>th</sup> St, Bloomfield, IA  
3/4 Miles East of Drakesville  
VM 641-664-2814 2-18

**PETS**

**FOR SALE:** APHA Reg. Mare, 9 Yrs Old, Sorrel/Wht, \$1,000; Paint Pony Gelding Blk/Wht, Blue Eyes, 7 Yrs Old, \$300 OBO. Newton, IA.  
515-710-7308 2-25

**FOR SALE:** AKC Reg. Australian Cattle Dog/Blue Heeler Puppies. You Can See Pictures And Pedigrees At www.robertslonghorns.com  
573-406-9868 2-18

**FOR SALE:** Miniature/Toy Australian Shepherd Puppies for Sale. Very Friendly! Red and Black Tris Left, Males and Females. NSDR Registered. Great for Working, Breeding, or Pets. UTD On All Shots. Pictures Online at www.md-miniaussies.com, \$400-\$550.  
319-361-3454 2-25

**FOR SALE:** Miniature Schnauzers, 2 Females-Born 10/15/10, 2 Males-Born 12/26/10, Cute & Cuddly.  
Call 775-842-2253 2-25

**FOR SALE:** Rottweiler Pups, EXTREMELY RARE, All Blue/Black, Males Only \$400, Regular Rotts-Males Only \$375, Health Guar, DVD Available With Deposit.  
319-431-6700 2-25

**FOR SALE:** Purebred German Shepherd Puppies, Registered, 8 Wks Old, Have Shoits, Farm Raised, \$400.  
641-691-9331 2-18

**FOR SALE:** English Bulldog, Brindle & White, Female, 12 Wks Old, AKC, Pet Only \$250.  
660-216-2737 2-18

**FOR SALE:** Black Lab Pups, Male, Shots & Wormed, Ready Feb 12th, \$50 Each.  
641-799-1114 2-18

**Howard Bier Company Inc**  
**16th Annual Consignment Auction**  
**March 2, 2011**  
5532 Hwy 61 North, Hannibal, MO

**CONSIGNMENTS WELCOME**  
Call For Details: **573-221-8212**



**2009 Harley FXD Super Glide, Like New! 11K**

**\$10,995**

**C&C Cycle**  
Chariton, IA • 888-475-2243  
www.cc-cycle.com

**FINE MILITARIA, COINS & CURRENCY**  
**AUCTION**  
**SATURDAY, FEB. 26TH 2011 • 12:00 P.M.**

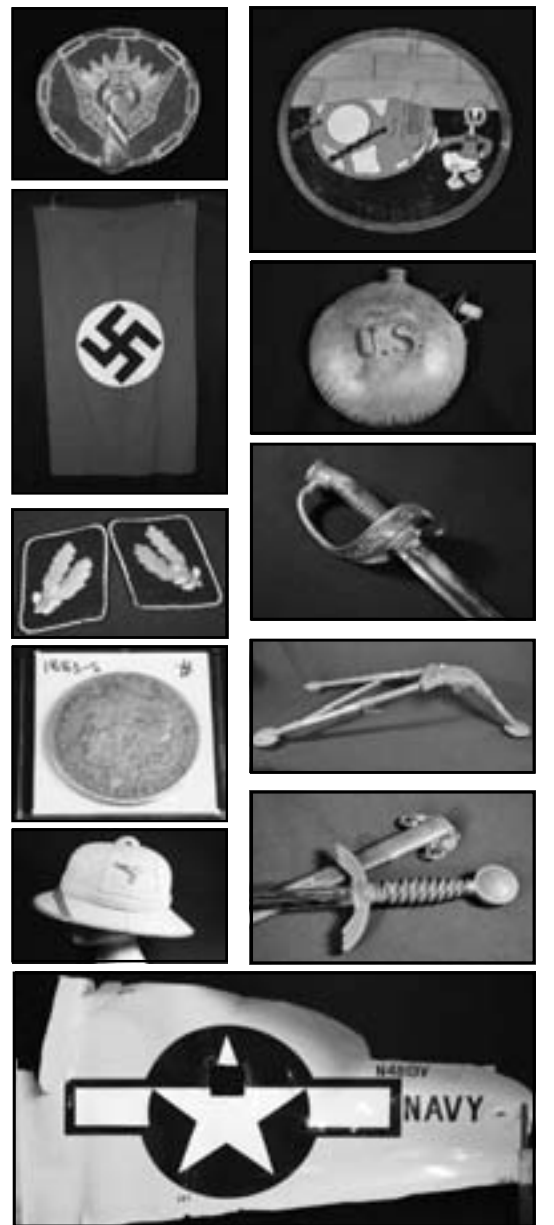
**American Legion • 521 SW 3rd St., Ankeny, IA 50023**

**Excellent offering of over 150 lots of U.S. & German Militaria being sold on behalf of several Estates & Collectors. Also, 100+ lots of coins & currency.**

**U.S. ITEM HIGHLIGHTS:** Great "skin" from Navy training bi-plane; two (1942 dated) WWII M-2 tripods for .30 cal Browning. Wonderful antique USMC dress sword. Tooled leather "Donald Duck" 780th Squadron patch, & 465th Bomb Group theatre-made embroidered patch with flight records of owner, a belly gunner on a Liberator. Also, 15th AAF Felt Wool bullion patches; many additional great patches! WWII Mountain Division tent & sleeping bag. Great 1943 U.S. USN flag from Mare Island. Civil War relics, and CDV photos of Generals. Vietnam "Green Beret" combat Vet's field jacket & insignia; Korean M-53 field jacket w/airborne patches & jump wings. 1918 U.S. Army revolver holster; early U.S. Army canteen (Spanish-American or Indian Wars). Some terrific scrapbooks (with wings & patches). A variety of G.A.R. buttons & medals, Victory medals, & insignia. Sterling WWII era USN ring. GREAT trench art, ephemera, homefront, and more!

**GERMAN ITEMS INCLUDE:** Luftwaffe 1st model dress sword; German & Japanese bayonets. A nice variety of German medals inc. Hindenburg Cross w/swords, Faithful Service medal, Iron Cross 2nd Class, wound badge, and others; great selection of SS collar tabs & death's head insignias, Nazi flag. Luftschutz helmet; Afrika Corps Pith helmet & shorts; German RR visor cap; black police shako; Kyffhauserbund peaked cap. Deutscher Volkssturm Wehrmacht armband. NSBO cloth insignia, Luftwaffe cloth insignia, 1944 Sport Eagle...and much more! See full list and photo gallery on website!

**COINS & CURRENCY:** Civil War CSA notes; Nazi notes; silver certificates; Civil War tokens. Columbia & BTW/GWC Commemorative halves; a variety of old cents, dimes, and nickels (inc. 1877-CC dime); 1920-D half dollar & many others from the 40's. Over 20 nice Morgan and Peace Dollars...and more! See full list on website.



**ANDREAS & ASSOCIATES**

Auctioneering & Appraisal Services



**515-681-7735**

**SEE WEBSITE FOR PHOTOS, TERMS & DETAILS. www.andreasauctions.com**



**SPRING CONSIGNMENT**

**Saturday, February 26, 2011 @9:00 AM**

**Directions:** Allen Auction Sale's Lot. From Hawk Point, MO, Take Hwy 47 South 2.5 miles, Auction on Left Side. Watch for Signs Day of Auction.

**COMBINES:** JD 6600 Combine w/215 Flex head, 4x4, hydrostat; 1980 JD 6620 Combine, very good condition, always shedded; 1972 Massey 300 combine, gas; Two row corn head, 10' grain head, quick attach head.

**TRACTORS:** 1996 Ford 7740 tractor; 1977 JD 4630, cab, air, quad range trans; JD 2750, diesel; Ford 3910, W/F, 3 pt; International 1566, cab, w/f, dual Hyd, black stripe, 20.8.38 duals; International 1456, W/F, 3 pt, dual hyd; International 1066 w/2350 Hyd loader bucket, new paint by Classic Car, new rubber, dual Hyd; International 966, W/F, 18.4.34 tires; International Farmall 756 w/loader, W/F; International 504 utility, W/F, 3 pt; International 454, diesel, 5300 hrs, W/F; 1952 AC-CA, restored, very nice; 1947 Farmall C.

**FARM EQUIPMENT:** JD 1250 four row planter, 38" rows; International 496 disc, 22', Hyd folds; International 475 disc, 18' hyd fold, good blades; Sunflower 16' offset centerfold disc w/22" blades; JD 630 Disc, 25' w/harrow, new blades, new bearings, nice JD 630 Disc, Hyd fold, 18'; Bush Hog 4126, 10', pull type; AC 2 bottom plow; 500 gallon water trailer; Bloomhart sprayer, 300 gal, 60' booms, hyd foam markers, 3 pt Hardy's sprayer, 500 gallon, 40' booms, Scorpion foam markers; New Idea 1 row corn picker; New Idea 212 PTO manure spreader.

**HAY EQUIPMENT:** International 8460 Big Round Baler; JD 535 Big Round Baler; JD 510 Big Round Baler; JD 330 round baler; JD 1209 mower conditioner; New Holland 114 Hydro Swing mower conditioner; 210 hay conditioner; New Holland 479 hay conditioner; New Holland 279 haybine.

**CONSTRUCTION EQUIPMENT:** 1997 Cat 953C; 1978 Cat 3208, 13 spd, 15' dump bed; JD Backhoe for skid loader.

**VEHICLES:** 2001 International 4900 Cab & Chassis, 466 eng, diesel, 6 spd; 1992 Chevy 3500 HD Cab & Chassis, 2 wheel drive, manual, 454 eng; 1991 Chevy 2500 pickup 4x4 w/7 1/2 ft. Western snow plow, auto; 1971 International truck.

**TRAILERS & WAGONS:** Gooseneck tandem trailer w/steel floor, 26'; Easy Trail 220 gravity flow wagon, hyd auger, like new; Bumper hitch trailer, 15'; 18' Bumper hitch flatbed trailer.

**LIVESTOCK EQUIPMENT:** Concrete feed bunks; Powder River Cattle Equip-20' Homesteader alley & portable sweep.

**RECREATIONAL:** JD Gator; Kawasaki T-Rex UTV all terrain, like new; 2005 Yamaha DX110 wave runner w/trailer, 110 hp, 4 cyl fuel injected, e seater, 100 hrs.

**LAWN & GARDEN:** 2004 Grasshopper 322, diesel, 72" cut; Troy Bilt 5 horse tiller.  
**SHOP EQUIPMENT & TOOLS:** Clark mig welder, 110; Curtis portable air compressor, 13HP, like new; Sullivan air compressor w/JD motor; Lot - Big fans; Lot - Trash gondolas; Lot - 5 gal water coolers; Lot - 5 gal safety fuel cans; 3 - Pallet jacks; Lot - Wet/Dry shop vacs; Lot - Homelite 3" water pumps; Lot - Propane heaters; 2 - Side toolboxes, 8' long, 12" deep.

**MISCELLANEOUS:** Concrete parking stops-6' & 7'; 14 1/2" trailer tires & rims; Ford or Jeep wheels & tires, 5 hole; 4 - 19Lx16.1 tires & wheels; 1 - 12.5Lx16.1 tire & wheel; 10 - 11Lx15.5L tires & wheels; 2 - 21.5x16.1 tires; 2 - 11.6x15.5 tires; 2 - 900 R20 truck tires; 2 - 12.4x11.24 spray coupe tires; 2 - 10,000 lb. dual trailer axles; Ball hitch for gooseneck trailer.

**Auctioneers Note:** This is a partial list. Will be running 2 auction rings. Please come prepared with extra bidder. Check our website for a full listing and pictures!

**Allen Auction & Real Estate Service LLC**  
(636) 338-4805 • Hawk Point, MO  
**www.allenauction.net**



## Public Auction

**Saturday, Feb 26, 2011 • 10:00 AM**  
**1740 E. Garfield Ave • Des Moines IA**  
 Logan Community Center - Preview of Items Friday, Feb 25th, 2:30 to 5:00 PM

**This is a Fundraiser for the Boys & Girls Clubs of Iowa.**

Office Equip; Peg Boards; Sev Boxes of Canned Foods; Glass Display Case; 144 Maroon Stackable Chairs; 62 Plastic Chairs; Big Screen TVs; Sound Equip; Computers; White Boards; 2009 Frigidaire; Pool Table; 2 Foosball Tables; Pingball Table; Paints; New Boardgames for Kids; Childrens Books; Markers; Crayons; School Utensils; 3 Bicycles; 2 Pianos (Packard NO 138.752); Footballs; Kitchenware; 2 Couches; 1 Small TV; 30 Various Tables; Office Furniture; Office Equip; Metal Cabinets; Fridge/Deep Freeze; 30 School Footlockers; Stand Up Glass Trophy Case; 6 Fast Food Table/Chairs; 2 Carpet Ball Tables; 2 Green Chairs; 2 Commercial Fans; 20 Scooter Boards; Lots of Sporting Goods; Hula Hoops; Brown Chairs; Platform Stage; Softball Gear; Tennis Rackets; Baseball Equip; T-Ball Equip; Catchers Equip; Excercise Platforms; Lots of Baseball Bats; PE Gym Equip; Super Chute Catch; Punch Bag/Speed Bag; Air Hockey Table; Weight Lifting/Benches; Leg Press; Metal Stands; Hygiene Products; Paper Towels; Cart Rack for Chairs; Lg Deep Freeze; New Leather Sofa; New Slate Pool Table.

This is a Partial Listing. Go to [millersauctioneerservices.com](http://millersauctioneerservices.com) for Pictures.

**MILLERS AUCTIONEER SERVICES**  
 Des Moines, IA  
**515-710-9491** Since 2003

# Land Auction


"We sell it the day you need it sold!"

**90 Acres M/L Redfield, IA**  
**Sat. Morn. February 26, 2011**  
**10:00 a.m.**  
 Redfield Legion Bldg Redfield, IA  
 Minutes west of Des Moines on Hwy #6 (Hickman Road)

**Location of Farm:**  
 From Redfield: 3 1/2 miles west of Redfield, Iowa across dam on 280th Rd. (F-59) to Zack Lane, 1 mile south on dead end.

**General Description:**  
 90 acres m/l with approx. 26 acres tillable land, balance in timber & pasture bordering the Raccoon River! Beautiful recreational timberland overlooking the Raccoon river valley! Limestone Bluffs! 26 acres of income producing land! Secluded area on dead end road!

Guthrie County



26 Acres M/L Tillable  
 CSR Rating: 46.8  
 Sharpsburg/Gara Soils

Pasture & Timber

Section 11 of Penn Twp

Terms: Cash, 10% down payment day of auction. Balance due at closing on or about 30 to 45 days. Possession at closing. Buyer will have possession for 2011 crop year.

**Daugherty Auction and Real Estate Services, Inc.**  
 Kelly Daugherty owner auctioneer . Chad Daugherty, Brad Jones auctioneers  
 Adel, Iowa (515) 993-4159 ~ [d\\_auction@hotmail.com](mailto:d_auction@hotmail.com)  
 See us on the web at [www.daughertyauction.com](http://www.daughertyauction.com)

The information in this brochure is from sources deemed to be reliable but it cannot be guaranteed by Daugherty Auction and Real Estate Services, Inc.

# We're Melting Prices At Lovegreens

**\$10,000 Off**



**2010 DODGE RAM 2500**  
 Crew Cab, Cummins Diesel  
 #106521

**\$21,883**



**2011 DODGE RAM 1500**  
 #116512

**NEW**



#113039  
**2011 FORD FOCUS SE**  
 4 Cyl, Automatic, Air Conditioning,  
 Fully Loaded,  
 Was \$19,060  
**NOW ONLY \$14,983**

**NEW**



#103121  
**2010 FORD FUSION SE**  
 4 Cyl, Auto, A/C, Pwr. Moonroof,  
 Sun & Sync Value Package,  
 Was \$24,310  
**NOW ONLY \$20,883**

All Manufacturer Rebates, Farm Bureau & Commercial Rebate Applied.  
 Must Finance Through This Office, \$65 Administration Fee. See Dealer For Details.

<p><b>1998 FORD EXPLORER XLT</b></p>  <p>4x4, V6 Automatic, Air Conditioning, Only 73,000 Miles, Nice Local Trade!</p>	<p><b>2005 DODGE DAKOTA SLT</b></p>  <p>Club Cab 4x4 4.7 V8 Automatic, Air Conditioning, Nice Local Trade, SAVE BIG!</p>	<p><b>2008 FORD F350 XLT</b></p>  <p>Supercab 4x4, Dually! 6.3 Powerstroke Diesel, Auto, A/C w/DewEze Remote Control Bale Bed, Only 29,000 One-Owner Miles, It's Ready To Go!</p>	<p><b>2008 FORD ESCAPE XLT</b></p>  <p>Automatic Air Conditioning, Only 21,000 One Owner Miles! 103094A</p>	<p><b>2006 FORD F350</b></p>  <p>LARIAT CREW CAB 4x4, 6.0 Powerstroke Diesel, Automatic, Air Conditioning, Leather Seating, Fully Loaded!</p>	
<p><b>2007 FORD F150</b></p>  <p>SUPER CAB XLT 4X4, 5.4 V8, Automatic, Air Conditioning, Fully Loaded, Nice Local Trade!</p>	<p><b>2005 DODGE GRAND</b></p>  <p>CARAVAN SXT V6 Automatic, Dual Air Conditioning, Stow &amp; Go SAVE SAVE SAVE</p>	<p><b>2010 FORD F250 XL</b></p>  <p>Supercab, 4x4, V10, Automatic, A/C, Only 10,000 One-Owner Miles! Like New! SAVE THOUSAND</p>	<p><b>2008 FORD F250 XLT</b></p>  <p>Crew Cab 4x4, 6.4 Powerstroke Diesel, Auto, Air Conditioning, Fully Loaded, SAVE BIG!</p>	<p><b>2008 MERCURY MARINER</b></p>  <p>V6, Auto, A/C, Moon Roof, Fully Loaded, Extra Nice, Only 20,000 Miles!</p>	
<p><b>2006 FORD F-350 XLT</b></p>  <p>4x4, Dually Cab &amp; Chassis, Powerstroke Turbo Diesel, Automatic, Air Conditioning, Fully Loaded, New Tires, Nice One Owner Truck</p>	<p><b>2008 FORD E350 XLT</b></p>  <p>Passenger Van, 5.4 V8, Automatic, A/C, Extra Nice, Local Trade! HARD TO FIND!</p>	<p><b>2002 BUICK CENTURY</b></p>  <p>V6, Automatic, Air Conditioning, Fully Loaded! Only 77,000 Local Miles</p>	<p><b>2006 FORD FIVE</b></p>  <p>HUNDRED SEL V6 Automatic, A/C, Leather Seating, Fully Loaded, Extra Nice, Local Trade, SAVE!</p>	<p><b>2008 CHRYSLER TOWN &amp;</b></p>  <p>COUNTRY TOURING, V6, Automatic, Air Conditioning, Stow &amp; Go, Fully Loaded! Save Thousands! Two To Choose</p>	
<p><b>2005 CHEVY SUBURBAN</b></p>  <p>L1Z71 4x4, 5.3 V8, Auto, A/C, Leather Seating, Remote Start, DVD System, New Tires, WOW! It's Nice!</p>	<p><b>2007 CHEVY HHR</b></p>  <p>V6, Automatic, Air Conditioning, Just Traded For!</p>	<p><b>2007 TOYOTA YARIS</b></p>  <p>40+ MPG, 2 Door Hatchback, Air Conditioning, Aluminum Wheels, Extra Clean! Great Fuel Economy!</p>	<p><b>2007 CHRYSLER TOWN</b></p>  <p>&amp; COUNTRY TOURING V6, Automatic, Air Conditioning, Fully Loaded, Extra Clean, Locally Owned</p>	<p><b>1996 FORD EXPLORER</b></p>  <p>LIMITED 4X4 4.0 V6, Auto, A/C, Leather Seating, Fully Loaded, Nice One-Owner Trade</p>	
<p><b>2006 FORD F350 LARIAT</b></p>  <p>Crew Cab, 4x4, 6.4 Diesel, Automatic, Air Conditioning &amp; More</p>	<p><b>1991 FORD E150</b></p>  <p>CONVERSION VAN Raised Roof, V8 Automatic, Fully Loaded, Only 63,000 Miles, Extra Clean!</p>	<p><b>Service Specials To Protect Your Investment</b></p> <p><b>Fuel Service \$107.95</b></p> <p><b>Transmission Flush \$142.95 Ford \$152.95 Chrysler</b>  <i>(some vehicle slightly higher because of fluid prices)</i></p> <p><b>Coolant Flush \$95.99</b></p> <p><b>Power Steering Flush \$69.95</b></p> <p>Stop by or call and ask Jay or George about Factory recommended maintenance that prolongs the life of your vehicle!</p>		<p><b>2010 FORD FUSION SE</b></p>  <p>4 Cyl, Automatic, A/C, Moonroof, Fully Loaded, Only 26,000 On-Owner Miles! SAVE THOUSANDS</p>	<p><b>1998 PONTIAC</b></p>  <p>BONNEVILLE SSE, 3.8 V6, Auto Air Conditioning, Leather Seating &amp; More! Was \$8,990 NOW ONLY \$6,983 2802568</p>
<p><b>2009 CHRYSLER SEBRING</b></p>  <p>LIMITED, V6 Automatic, A/C, Leather Seating! Lady Driven! Never Been Smoked In! Only 6,000 One-Owner Miles</p>	<p><b>2007 MITSUBISHI</b></p>  <p>ECLIPSE GT SPYDER CONVT. V6 Automatic, Air Conditioning, Only 23,000 Miles! WOW! IT'S NICE!</p>	<p><b>2002 KIA SEDONA</b></p>  <p>V6, Automatic Air Conditioning, Fully Loaded, Local Trade Only 67,000 Miles!</p>	<p><b>2004 DODGE SLT 1500</b></p>  <p>Quad Cab, 5.7 Hemi, Automatic, Air Conditioning, Fully Loaded, Was \$11,990 NOW ONLY \$9,444 116513A</p>		
<p><b>2008 DODGE NITRO SXT</b></p>  <p>4x4, V6, Automatic, Air Conditioning, Nice One-Owner Trade!</p>	<p><b>2003 DODGE RAM SLT</b></p>  <p>Quad Cab, 4x4, 5.7 Hemi, Automatic, Air Conditioning, \$AVE</p>	<p><b>2005 PONTIAC GRAND AM</b></p>  <p>SE, V6, Automatic, Air Conditioning, Only 65,000 Miles! Extra Nice!</p>	<p><b>2008 TOYOTA AVALON</b></p>  <p>XLS, V6, Automatic, Air Conditioning, Leather Seating, Moon Roof, Navigation, WOW! Save Thousands!</p>		
<p><b>2002 PONTIAC</b></p>  <p>BONNEVILLE SLE, 3800 V6 Automatic, Air Conditioning, All the Options, Nice Car!</p>	<p><b>2001 FORD RANGER</b></p>  <p>XLT Ext Cab 4 Door, V6 Auto, Air Conditioning, Nice Truck</p>	<p><b>2008 FORD TAURUS</b></p>  <p>LIMITED Super Nice &amp; Loaded w/Equipment</p>	<p><b>2008 FORD FUSION SE</b></p>  <p>4 Cyl, Automatic, Air Conditioning, Fully Loaded, FROM! SAVE THOUSANDS!</p>	<p><b>2007 FORD ESCAPE XLT</b></p>  <p>V6, Automatic, Air Conditioning, Moon Roof, Extra Nice, One-Owner Trade!</p>	

For Pre-Owned Vehicles Prices & Photos Check Out [www.golovegreen.com](http://www.golovegreen.com)

We Buy Used Cars! Call Jim Perry 660.665.2828

# LOVEGREEN

Stop by or call and ask for Jay or George

1801 N. ELSON • KIRKSVILLE, MO 1-800-500-4966 • 660-665-2828

RICK JOHNSON - 660-342-2936 • JAMES WILLIS - 660-341-1644 • CHUCK HAYES - 660-299-0700

DAN HAGAN - 660-349-0807 • JIM PERRY 660-665-2828 • STEVE SWINDLER - 660-379-2624



# MACHINERY CONSIGNMENT AUCTION

Located at Duwa's Auction Building, 1 1/2 miles West of Wellman, IA  
on Hwy 22

**Sat - March 26, 2011**

## CONSIGNMENTS WANTED

**Farm & Livestock Equipment • Farm Trucks  
4-Wheelers • Shop & Lawn Equipment**

**Ad Deadline: Wed, March 9th**

Items May be Brought to Site - **Beginning - Mon - March 14th**

**DUWA'S AUCTION SERVICE LLC  
319-646-6775**

**Web: duwaauction.com**



**2006 Harley  
FXDLI Low  
Rider, Custom  
Grips & Pegs,  
Highway Pegs,  
17K**

**\$10,995**

**C&C Cycle  
Chariton, IA • 888-475-2243  
www.cc-cycle.com**

# LAND AUCTION

**Marion County, Iowa  
78.5± Acres**



**9:30 AM • Saturday, March 5  
Melcher-Dallas Senior Citizens Building  
109 Main Street • Melcher-Dallas, Iowa**

For additional information, contact:

**John and Kathy VanZee, Agents  
Prairie City, Iowa**

(641) 521-0151 or (641) 521-5305  
JVanZee@FarmersNational.com



L-1100201

**www.FarmersNational.com**

Farm Management • Real Estate Sales • Appraisal  
Insurance • Consultation • Oil and Gas Management  
Lake Management • National Hunting Leases

# LAND AUCTION

**Decatur County, Iowa  
245± Acres**



L-1100243

**2:30 PM • Monday, February 28  
Leon Community Center  
203 Second Street • Leon, Iowa**

For additional information, contact:

**Farmers National Rod Good, Agent  
Norwalk, Iowa  
(515) 981-0193 or  
(515) 250-1119  
RGood@FarmersNational.com**

**www.FarmersNational.com**

Farm Management • Real Estate Sales • Appraisal  
Insurance • Consultation • Oil and Gas Management  
Lake Management • National Hunting Leases



**LAND AUCTION  
673 ACRES/5 TRACTS  
SCHUYLER COUNTY, MO  
THURSDAY, MARCH 10TH, 2011  
@ the Hour of 6:00 PM**

Sale Held at the Days Inn Hotel Located on the South Edge  
of Kirksville, MO on Hwy 63.

Land Lying in Sect. 20, 21, 28 & 29. TWP 65-N, R-15-16-W. Offers Productive Tillable Land,  
Grassland, Timber, Building Sites, Improved Pastures & Much More.

Complete Details Online @ [www.mcafeeauctionservice.com](http://www.mcafeeauctionservice.com)

**LARRY & KAREN SLAUGHTER, SELLERS**

## McAfee/Hayes Auction Service

**660-727-3796 • 660-341-7412  
www.mcafeeauctionservice.com**

*Public Invitation Auction Announcement*

**Machinery Wanted  
Pocahontas Machinery Auction**

**NEXT AUCTION**

**Wednesday, March 9, 2011 ~ 9:30 AM**

ADVERTISING DEADLINE ~ 5:00 PM MONDAY, FEBRUARY 21, 2011

Sale Managers ~ Rick & Kendra Winegarden

The Sale Barn ~ 712-335-3117

Cell: 712-358-0974

Email Lists to: [salebarn@evertek.net](mailto:salebarn@evertek.net)

website~[salebarn.ncn.net](http://salebarn.ncn.net)

**MTMH: REPO MODULAR  
4 Bedroom, 2 1/2 Bath,  
Never Lived In  
Mark Twain Homes  
in Farber  
573-249-3333**

**Visit Us On The Web @  
[www.hawkeyetrader.com](http://www.hawkeyetrader.com)**

# Land Auction

**186 Acres M/L Guthrie County!** "We sell it the day you need it sold!"



**Tuesday, March 8, 2011  
10:00 a.m.**

**Auction Location: On Site**

**Location of Farm:**

From Jamaica, Iowa: Farm borders the north edge of Jamaica on P30 pavement, 80 acres on east side of P30 & 110 acres on west side.

**General Description:**

186 acres M/L all located in Section 2 of Richland Plat, Guthrie County Iowa. 43 acres of row crop with possession for this years crop production carrying an

**Ave. CSR rating of 90!!**

The balance is as follows:

**CRP Contracts:**

12.4 acres in CP25 contract at \$133.60 p/acre expires 2016

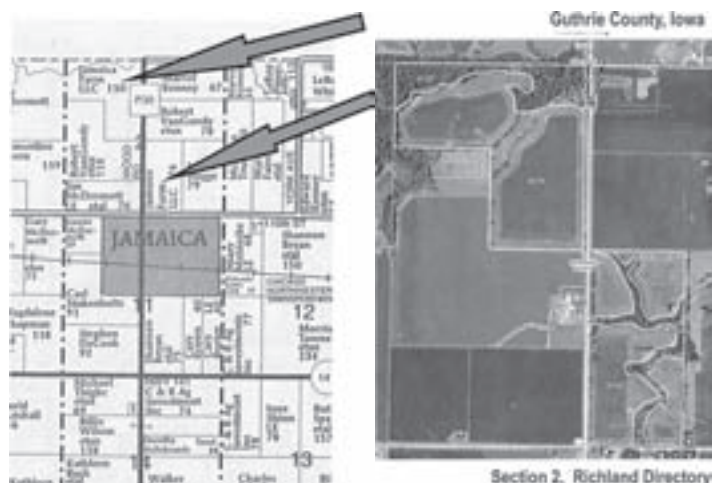
63.0 acres in CP33 contract at \$142.60 p/acre expires 2016

17.5 acres in SAFE program at \$198.05 p/acre expires 2025

Balance of farm is in timber/creek bottom.

**Taxes:**

Terms: Cash, 10% down payment day of auction. Balance due at closing on or about 30 to 45 days. Possession at closing. Buyer will have possession for 2011 crop year.



**Daugherty Auction and Real Estate Services, Inc.**  
Kelly Daugherty owner auctioneer • Chad Daugherty, Brad Jones auctioneers  
Adel, Iowa (515) 993-4159 ~ [d\\_auction@hotmail.com](mailto:d_auction@hotmail.com)  
See us on the web at [www.daughertyauction.com](http://www.daughertyauction.com)

The information in this brochure is from sources deemed to be reliable but it cannot be guaranteed by Daugherty Auction and Real Estate Services, Inc.

# Land Auction

**80 acres m/l Davis City, Iowa** "We sell it the day you need it sold!"



**Saturday morning, March 5, 2011  
10:00 a.m.**

**Sale held at: Davis City Community Center  
209 Bridge St. Davis City, Iowa**

**Location of Farm: (Approx. 12 miles south of Davis City)**

From Davis City, IA: Go South on J66 (Dale Miller Rd) for 3.9 miles. Turn right on 220th Ave. Go 1.8 miles to State line. Turn right on 330th Ave. Go 1.4 miles to 330th & E 110th St.

**General Description:**

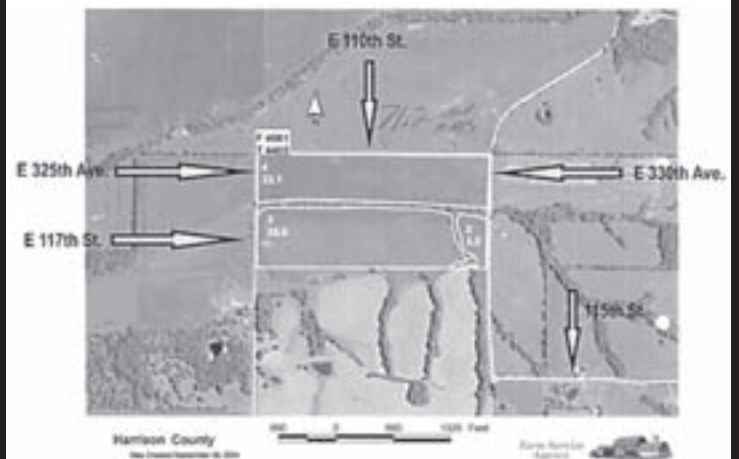
Offering 80 acres m/l Grand River Bottom Land of which approx 74 acres are tillable!! There is a drainage ditch running through the property as shown. Rural Water at road. This farm is currently rented for the 2011 crop year w/ the one time payment going to the successful buyer. Call for details!

Partial Legal: N 1/2 NE 02-66-26

Taxes: \$459.22 Annually

Terms: Cash, 10% down payment day of auction. Balance due at closing on or about 30 to 45 days. Sold subject to tenants rights until March 1, 2012.

**Nine Eagles Trading Post, Ltd., Seller**



**Daugherty Auction and Real Estate Services, Inc.**  
Kelly Daugherty owner auctioneer • Chad Daugherty, Brad Jones auctioneers  
Adel, Iowa (515) 993-4159 ~ [d\\_auction@hotmail.com](mailto:d_auction@hotmail.com)  
See us on the web at [www.daughertyauction.com](http://www.daughertyauction.com)

The information in this brochure is from sources deemed to be reliable but it cannot be guaranteed by Daugherty Auction and Real Estate Services, Inc.