

# WESTERN

## USED 8.5 SNOW BLADE



# GIVE US A CALL OR DROP IN!

**Carroll**  
RENTS

**IOWA**  
**TOOL**

1111 WILDWOOD DR.  
OTTUMWA, IA 52501  
877-684-4052

HAWKEYE TRADER CRS031111



YOUR

# HAWKEYE TRADER

**FREE**  
Every Friday

Vol. 9 No. 10 March 11, 2011

*Goes A Long Way To Serve You!*

Phone 641-675-3971 • Fax 641-675-3972 • Email ads@hawkeyetrader.com  
[www.hawkeyetrader.com](http://www.hawkeyetrader.com)

*Countryside*

RV & Trailer Sales

SALES • SERVICE • PARTS • STORAGE

**COUNTRYSIDE**  
MOTORSPORTS!



20 Miles East of Des Moines on I-80 to Exit 159 • 877-674-3573

Monday-Thursday 9:00-6:00 • Friday 9:00-5:00 • Saturday 8:30-1:30

**Special Purchase**



**Coachman  
Catalina 30BHS**  
Outside Kitchen, Lg  
Slideout, Bunks, Hickory  
Interior, Loaded  
**Sale Price**  
**\$17,995**  
Stk# 0962

**Special Purchase**



**2010  
Arctic Cat  
550 Prowler**  
4x4  
w/Aluminum Wheels,  
Choice Of Color  
**\$9,995**



**2011 Elkridge  
E26**  
Bunkhouse, Lg Slide,  
1/2 Ton Tow, Sleeps 8,  
Superb Floorplan,  
Loaded w/Features!  
**Sale Price**  
**\$19,795**



**2011 Arctic  
Cat 700 HDX**  
Camo, Bench Seat,  
Power Steering, 4x4,  
Lg Dump Box  
**On Sale,**  
**\$12,799**



**2011 Cruiser  
30SKP, Patriot Edition**  
All Jacks Elect. Front &  
Back, 50 Amp, Corian  
Countertops, Alum Wheels,  
4 Season, Loaded  
**Special Outright  
Price \$30,995**



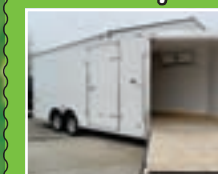
**Special**

**2011  
Arctic Cat  
450 HI, EFI**  
Automatic, 4x4, Perfect  
For Spring Hunts!  
**Sale \$6,590**  
**\$89.95 Per Mo. WAC**



*Over 40 Pre-Owned  
Units All On Sale*  
**2006 Zinger 25BH**  
1/2 Ton Tow,  
Bunks, Lg. Slide  
**Sale Price**  
**\$11,995**

**STEALTH TRAILERS**  
Variety Of Sizes On Hand



**2011  
Crossovers**  
8.5x23'  
Finished  
Interior  
w/Lights &  
Cabinet!  
**\$7,195**

**Now Is A Great Time  
To Buy With  
Our Very Large Selection  
Of New & PreOwned Units**  
*\*Plus Special Financing*  
**[www.csrvsales.com](http://www.csrvsales.com)**

**You Can Haul A Car,  
Snowmobiles, ATVs,  
UTV's, Motorcycles, Etc...**  
**[www.countryside-motorsports.com](http://www.countryside-motorsports.com)**



# RICHARD

## Realty & Auction, Inc.

**LAND, FARM MACHINERY, REAL ESTATE, ACREAGES!!**







**LYNN RICHARD**   **TIM MEYER**   **CHRIS RICHARD**   **MISSY ALLEN**   **JASON DENNING**

**319-385-2000**  
 605 East Winfield Avenue, Mt. Pleasant, IA 52641  
[www.richardrealtyauction.com](http://www.richardrealtyauction.com)

### DES MOINES DIESEL INC

Servicing All Your Diesel Fuel Injection Needs  
**Pumps, Nozzles & Turbos**

**Ag & Truck Performance Parts**

1-800-475-6086 • 515-265-7318  
 3211 Delaware Ave Des Moines, IA 50313  
*1 Blk E. of the ADM Soybean Plant*

**For Sale 20' & 40' Storage Containers**  
**Starting @ \$1,790**  
**Mouse Proof**



**ABC Portable Storage**  
 Delivery Available  
 563-299-4278

## Lancaster Lumber, Inc

### Postframe Buildings

**800-424-5071**

[www.lancasterlumber.com](http://www.lancasterlumber.com)



### We Stand Behind Our Buildings

Merton Buildings is proud to provide our customers with a 50 year warranty against damage by snow loads. We have one of the strongest, non-prorated warranties in the industry.

**641-774-5978 Chariton, Iowa**  

**MORTON BUILDINGS**  
 800-447-7436 • [mortonbuildings.com](http://mortonbuildings.com)

50 Year Snow Load Warranty!  
 Garage • Equestrian • Farm Shop • Commercial



J

JOHNSTRUUD TRANSPORT, a food grade liquid carrier is looking for Class A CDL tank drivers to work out of our Des Moines terminal running Midwest regional. Out 7-10 Days. 5 years driving experience required. Will train for tank. Great Pay & Benefit package. For further info:  
 Call Shari Mon-Fri @ 1-888-200-5067

## American CDL Training

**660-254-2541**

**CDL Licenses in 24 Hours**  
[www.americancdl.com](http://www.americancdl.com)  
 St. Joseph, MO

**Any State, Automatic Truck**





View our paper for great savings online at  
[www.hawkeyetrader.com](http://www.hawkeyetrader.com)



Sell It In The Hawkeye Trader

# TJ's Auto

*Centerville, Iowa*

**Todd Jewett, Owner**  
 24345 Dewey Road  
 641-437-1064  
 641-895-0319



2009 Pontiac G6 GXP, 3.6, 6 Cyl, Auto, Loaded, Heated Leather, Pwr Sunroof, Remote Start, Clean Title, 12K, NADA \$19,500  
Sale Price \$16,500



2008 Chevy Cobalt Sport, 2.4, 4 Cyl, Auto, Loaded, Heated Leather, CD, Pwr Sunroof, 60K Miles, \$8,500



1984 Pontiac Firebird Trans Am, 5.0 H.O. V8, Auto, Well Equipped, New Tires! \$70K Original Miles, WOW! \$3,800



2001 Saturn SL2, 4 Cyl, Auto, Air, Pioneer CD, High Miles \$2,200



1986 Chevy K1500, 4x4, 350 V8, Auto, 5K on New Engine, Tranny, Rear Ends, Interior, Nice Truck! Clean Title, \$6,200



2007 Ford Fusion SEL V6, Auto, Loaded, Leather CD, Sunroof, 50K \$9,995



2006 Chevy Cobalt LS 2.2 4 Cyl, 5 Spd. Air, CD, 60K \$4,995



2005 Chevy Cavalier 2.2, Auto, Air, CD Clean Title, 82K \$4,995

SAVE \$\$\$\$

Great Gas Mileage!

www.tjsautoia.com

Full Service Body Shop • Individual & Insurance Work Welcome

### DeVore HOMES

10 Miles South of Knoxville on Hwy 5  
 Toll Free 877-433-8673  
 7 model homes on display  
 M-F: 9 to 5  
 Saturday: 9-3 (or by appointment)  
 Homes to fit every budget

[www.devorefactorydirect.com](http://www.devorefactorydirect.com)




### Boyle Tree Service & Logging

**We Cover All of SE Iowa**  
 Specializing in *Hard-to-Get* Removal, Skid Loader Work, Brush & Lot Clean Up, Log Work and Standing Timber Sales

Call Andrew Boyle @  
**641-777-9333**

CE

641-437-4666 Don't Have it...We'll Find it!  
 641-895-3205  
 Enterprises LLC  
 22900 Hwy 5, Centerville, IA  
 Mon-Fri 8-5 • Sat 8-12



Over 200,000 Square Feet of Inside Commercial Storage (Campers, Boats, Etc.) Plus Fenced In Outside Storage



2000 Ford Ranger Super Cab, 3.0 6 Cyl, 4x4



2001 Ford F150, Ext. Cab, 4 Dr., 5.4 V8, Auto, 4x4



2001 Prowler LS, 31', Rear Living Room Slide, Bed Slide, Awning, Fridge, Air  
**WAS \$11,900 • NOW ONLY \$10,250**



**\$4,250 AS IS**  
 1998 Ram 2500, 4x4, Reg Cab, V8, 5 Spd, Long Box, Extra Clean! Right Box Side Damage & Rear Spring Leafs



2005 Wildwood LE 29FBSRV, Toy Hauler, Front Bedroom, Generator, Double Entrance, Awning, Air, Great Buy at \$11,750



2001 Quest by Jayco, 253D, Rear Kitchen, Sofa Slide, Stove, Fridge, Air, Micro, Awning



**"Over 100 Pre Owned Cars, Trucks & SUV's To Choose From"**

# Kars, Inc

**5701 E. University  
Pleasant Hill, IA  
515-564-0937**

**ON THE SPOT  
BANK FINANCING**

**BUY WITH CONFIDENCE! ALL VEHICLES INSPECTED!**  
Get Your **FREE**  @ **www.kars-inc.com**

**WARRANTIES  
AVAILABLE**



**Only  
61K Miles**

**2004 Chevy Tahoe, 4x4, Z71 Loaded, Heated Leather, Full Power, CD, DVD 3rd Row Seating Power Sunroof \$16,995**



**Only  
64K Miles**

**2002 GMC Sonoma SLS Ext Cab, 4.3 V6 Auto, ZR2, 4x4 Nicely Equipped CD, Heated Mirrors \$12,995**



**2002 Chevy Silverado K2500HD 4x4, Crew Cab LT, 6.6 V8, Diesel Auto, Loaded Leather Heated Seats, Full Power, CD \$14,995**



**2005 Pontiac Grand Am SE V6, Auto Nicely Equipped Cloth Interior Power Windows & Locks \$4,995**



**2003 Chevy Impala V6, Auto, Full Power CD, Aluminum Wheels \$4,995**



**WOW!**

**1998 Buick LeSabre Limited 3800 V6, Auto, Loaded, Leather Full Power, CD, Only 89K Miles WOW! ONLY \$5,995**



**2007 Chevy Silverado K1500 Crew Cab, 4x4, Z71, 5.3 V8 Auto, Loaded, CD, Nice! \$17,995**



**2004 Olds Alero 2.2 4 Cyl, Auto Well Equipped, Spoiler, CD \$4,995**



**1998 Chevy K2500 3/4 Ton, 4x4, 5.7 V8, Auto Silverado, Nicely Equipped \$5,995**



**2003 Chevy K1500 Ext Cab, 4 Dr Silverado, 4x4 5.3 V8, Auto, Z71, Well Equipped ONLY \$8,995**



**2007 Dodge Durango SXT 4WD, V8, Auto, Full Power CD, 3rd Row Seating, 67K 1 Owner, \$14,995**



**2003 Chevy Trailblazer Ext LT V8, Auto, Loaded, Heated Leather Full Power, CD, Rear Air, 3rd Row Seating, 1 Owner, \$12,995**



**2006 Kia Sedona LX 4 Dr, V6, Auto, 7 Passenger Rear Air & Heat, CD Quad Seating \$7,995**



**2006 Ford Taurus SEL 3.0 V6, Auto, Full Power CD, Cloth Interior \$6,995**



**ONLY 65K Miles**

**2002 Jeep Liberty 6 Cyl Auto, 4x4, Tilt, Cruise, Air Power Windows, Locks & Mirrors, CD WOW! \$9,995**



**ONLY 69K Miles**

**2002 Chevy Silverado 1500 V8, Auto, Ext Cab, 4 Dr, 2WD Well Equipped, CD \$9,995**



**2005 Volkswagen Jetta GLS 4 Cyl, Auto, Well Equipped Heated Seats, CD, Power Sunroof Good Gas Mileage! \$7,800**



**2004 Chevy Silverado K1500 Crew Cab, 4x4, Z71, 5.3 V8, Auto Loaded, Full Power, CD \$15,995**



**2006 Chevy Impala LTZ V6, Auto, Loaded, Heated Leather Bose System, CD, XM Radio, Full Power Only 56K Miles, \$13,995**



**2005 GMC Sierra K2500HD Crew Cab SLE, Duramax Diesel, Allison Trans, Full Power, CD/Cass, XM Radio, Well Equipped, 101K, 1 Owner, \$24,995**

**Sales Opportunity Available! CALL NOW! 515-564-0937**



**DMS Building Co.**  
1713 Fifield Road, Pella, IA 50219

Pole and Post Frame Buildings



Free Entry Door With Every Building!

Call Ron For A Free Quote • 641-780-4257  
Or Visit Us At [www.dutchmillsupply.com](http://www.dutchmillsupply.com)

**3-D POP UP TOURNAMENT**



**MARCH 1-12-13**  
**BLUFF CREEK ARCHERY**  
117 WASH. AVE. E. ALBIA  
FOR INFO CALL 641-932-2422  
Buy A New Bow During  
The Month Of March & Get  
10% Off Accessories  
(Sights, Rest, Stabilizers,  
Bow Cases Etc.)

**The Hardy Outside Furnace**  
*First On The Market, Best In The Field*

Load Every 12 Hours  
Designed For Centrally Heated Homes

25 Years Of Service



- No Smoke, Ashes Or Wood Transfer Inside House
- Burns Up To 16 Inch Diameter Log
- Hotwater For Household Use
- Use Present Central Duct Or Baseboard System
- May Be Located 10-100 Feet From House
- All Stainless Steel Construction
- 25 Year Warranty

UL Financing Available

For More Information Call:  
C&S Heating & Cooling  
RR2 Box 48  
Farmington, IA 52626  
660-877-3908 Or  
319-520-7136



**HEAVY-DUTY FRONT BUMPER REPLACEMENTS**

- Prevent Costly Front Collision Damage
- Bumper Weighs Only 125 Pounds More Than Stock Bumper
- Available in Black, Silver, or Polished Stainless Steel



Dealer Inquiries Welcome

27427 Hwy B  
Oregon, MO  
(660)446-2002  
[www.circlekfab.com](http://www.circlekfab.com)



**Post & Pole Frame Buildings**



**SPECIALIZING IN**

- Post Frame Buildings (Up To 100' Wide Clear Span)
- Agricultural • Commercial
- Residential • Equine

Using Metal Roofing & Siding With Lifetime Warranty

**QUALITY WORKMANSHIP**  
**BEST QUALITY MATERIAL**  
888-371-4710  
18623 180th Street • Bloomfield, IA

**641-664-2817**

**MH 319-367-5744**

[www.menkehoyerauction.com](http://www.menkehoyerauction.com)

FARM • HOME • LAND • MACHINERY • ESTATES

**Professionals That Get Results!**



Corey Fraise  
Auctioneer/Broker



Jeff Hoyer  
Auctioneer/Realtor

**CORNING RENTAL**

A Complete Line of Rental Equipment!



806 Quincy St, Corning, IA Phone: 641-322-3801  
YOUR AUTHORIZED DEALER FOR M&M ENGINEERED TREE SHEARS & GRAPPLES

**CENTRAL IOWA FEATHERLITE TRAILER SALES**



Safe. Secure. Smart.

**1-800-240-8110**

Check Out Our Website for Current Used Inventory  
Click Here: [www.centraliowafeatherlite.com](http://www.centraliowafeatherlite.com)  
Phone: 515-967-8735 • Fax: 515-967-8736  
P.O. Box 100, Hwy 65 • Bondurant, Iowa 50035

**Markhams Foam, LLC**

Close Cell Foam, Ag, Residential & Commercial  
David Markham  
641-295-4091  
[markhamsfoam@yahoo.com](mailto:markhamsfoam@yahoo.com)

www.basf-pfe.com  
Helping Make Products Better®



**•FREE ESTIMATES •INSURED**



**Put A Gehl To Work For You!**  
On The Construction Site  
Or On The Farm!

**Hackert Sales & Service**  
Sales & rentals - several new & used on hand, In business 36 years, 1/2 mile east of Sully, 641-594-3777



Model 1610  
10' Thru 18' Available  
To Haul Your Valuable Cargo



Model 1694  
Haul Your ATV In Style on A New Featherlite Trailer



Model 8127 Livestock Trailer  
W/New PerfectFit System  
We Can Tailer A Livestock Trailer For The Farm Or Your Show Stock



Model 8541 Can Be Built to Make The PerfectFit For Your Horse Hauling Needs

**Lockridge Inc. Building Special**  
Available At All Locations



- 30ft. x 40ft. x 10 ft.
- Post Frame Construction
- 16ft. x 8ft. Raised Panel Overhead Door
- 36in 6-Panel Entry Door
- 40 Year Limited Warranty

Centerville Area Call ..... 641-856-2175  
Promise City Area Call .. 641-874-5402  
Chariton Area Call ..... 641-774-2785  
Unionville, MO Call ..... 660-947-2193



Lumber, Hardware, Clothing & Farm Supply  
[www.lockridgeinc.com](http://www.lockridgeinc.com)

\*Does not include local sale tax or delivery. See store for details.



# BUY DIRECT Metal Roofing



**AW Metal Inc.**  
Metal Roofing Headquarters  
**Bloomfield, IA**

**641-680-1922**

*Limo One, Inc.*  
Everyone at Limo One is Committed to Providing You With Distinctive, Professional and Reliable Service

[www.limoone.us](http://www.limoone.us) (641)451-limo(5466)

## ROYAL

### PORTABLE TOILETS

**641-682-1300**  
**1-800-250-4465**  
**OTTUMWA, IA**

### Golden Grain Bins

Grain Bins	Floors W/12" Supp & Flashing
18'x18' 4,195 Bu. \$4,212	18' \$1,140 30' \$3,185
27'x21' 11,265 Bu. \$8,093	21' \$1,559 36' \$4,539
42'x24' 32,245 Bu. \$17,956	27' \$2,602 42' \$6,183

**GMLS Industries, Inc.**  
PH: 660-699-2179  
Or 888-983-2136  
[www.gmlsindustries.com](http://www.gmlsindustries.com)

### FOR SALE!

Pipe & Steel Tubing,  
Square, Round  
Rectangular  
Bale Rings for Cattle  
& Horses, 10 Gauge  
Gates  
Corral Panels &  
Continuous Fencing

**Jim McKnight**  
Chariton, IA  
**641-414-0808**

AMEGA: REP MOBILE HOME  
Take Over Payments  
Only Here  
Amega Sales,  
Ashland  
573-303-5803

## CDL - TRUCK DRIVING SCHOOL

(INDIAN HILLS COMMUNITY COLLEGE)  
Ottumwa, IA

**Lowest Tuition In Midwest**  
**\$1,610**

**Our Student CDL Success Rate Is over 99%**

- Financial aid may be available.
- Both male and female graduates have gone on to great success.
- There will be a shortage of 111,000 drivers by 2014 (American Trucking Association).
- Top companies visit throughout a class to recruit for jobs.

*Take The On Ramp  
To More Income!*

**Call toll free**  
**(800)726 2585**

## WOODRUFF ANGUS

Milton, IA

A Powerful Set  
of Yearling &  
Coming 2 Yr Old  
Bulls Sired by:

WWW Capitol Gains, SAV Mandan,  
SAV Pioneer, SAV Heavy Hitter

2nd Place ROV Show Bull of the Year

641-799-6912 • 641-777-6458 • 641-656-4401

\* Several Bulls Recommended For Heifers

[www.hawkeyetrader.com](http://www.hawkeyetrader.com)

**J&B Pole Buildings, LLC**  
"Building for your future"  
Affordable buildings constructed on site.

**Joe Miller**  
Carlisle, Iowa • 515-418-4209  
[www.jandbpolebuildings.com](http://www.jandbpolebuildings.com)  
[jbpolebldgs@gmail.com](mailto:jbpolebldgs@gmail.com)  
Fully Insured

Dealer For  
Rushmore Buildings **RUSH-GO**

We Support Our Military Forces!  
Our Blessings Go Out To C.J. Miller  
& Others Who Gave Their Lives For Our Freedom!

### AG RELATED

FOR SALE: 5000 Bu. Circle Grain Bin Complete With Floor, Fan Stirrator, Unload Auger. Already Down. Good Condition. Can Deliver and Erect.  
712-621-0897 3-18

FOR SALE: Allis Chalmers D-19, Gas, Wide Front, Quick Couplers With 8' Blade, \$4,500.  
641-780-0419 3-11

FOR SALE  
2005 POLARIS 500  
PREDATOR ATV  
EXCELLENT CONDITION  
MATCHING HELMET  
**\$3,500**  
**660-341-1379**

Get around in Style on a Pride Scooter!

Don't just get around - get around in style on a Pride Scooter! With so many models as there are here, it's easy to find the perfect Pride Scooter for yourself or someone you love. Choose the size, speed, color, and performance that's right for you. It's difficult to choose a favorite - it's easy to choose Pride.

Hours:  
Mon-Fri: 8:30 a.m.-5:00 p.m.  
Sat 9 a.m. - 12 p.m.

**HAMMER**  
MEDICAL SUPPLY

813 E. Pennsylvania Ave. • Ottumwa, IA  
641-684-6800 • 800-352-6800

## Your Trader Goes A Long Way To Serve You

## Cut-to-Length Metal for Roofing Siding, Lining & Trim

Factory Direct  
Post Frame Building Pkgs  
Snap Lock Standing Seam  
Energy Star Rebates  
Interior Liner Steel - \$2.09/LF

"Our Business is Rolling!"

**BEFORE**

**AFTER**

## AFFORDABLE METAL

MANUFACTURING

319-683-2394

2340 Hwy 1 SW  
Kalona, IA 52247

Email: [amm@netins.net](mailto:amm@netins.net)

[www.affordablemetalmfg.com](http://www.affordablemetalmfg.com)

CALL US BEFORE YOU BUY!  
CALL ANYTIME  
SATURDAYS & SUNDAYS  
712-249-4711  
ANITA, IA

**ARRIVING SOON!**  
1 and 2 Place Motorcycle Trailers, 2 Tone, Single or Tandem Axles, Starting @ \$3,200

**Dumps** \$6,750

83" x 14' and 83" x 12' Snowmobile Trailers

MORE TRAILERS AVAILABLE • 5 BRANDS TO CHOOSE FROM!  
8.5 x 20' • 8.5 x 24' Car Haulers - Screwless Sides, 5200 lb Torsion, Starting At \$5,920 • 6 x 12' Tandem W/Ramp - \$3,175  
7 x 16' + 6" V Nose - \$4,065  
5 x 8' • 6 x 12' • 7 x 16' • 8 x 18'

**CUSTOM ORDER YOUR TRAILER!!**



## Midwest Storage Barns

Of Unionville, MO



12' x 16' Metal Barn w/Loft



12' x 20' Horse Shed w/6' Tack Room

Cabins New Sizes: Up to 16' Wide & Up to 40' Long



14' x 26' Cabin w/Porch & Loft



16' Log Cabin w/Porch & Loft

### SPRING SALE!

5% OFF ALL ORDERS THROUGH MARCH 31ST

16' Wide Cabins Built On Site

Ask About Our Rent To Own!

We Build Portable Garages

## Unionville, MO

Toll Free: 866-266-8147 Or 660-947-4391  
 Yoder Lumber, Bloomfield, IA - 641-772-3605  
 Lockridge Inc., Chariton, IA 641-774-2785  
 Hometown Animal Health, Memphis, MO 660-465-2967  
[www.midwestbuildings.net](http://www.midwestbuildings.net)

FOR SALE: New 9'2" Vicon Disc Mowers, 3PT; New 10 Wheel V Rakes, Pull  
 Ertel Welding 660-341-1997 3-11

FOR SALE: John Deere 7000 4-38" Planter, Seed Firmers, Dry Fertilizer Boxes, Precision Meters, Good Condition, \$2,500.  
 641-774-6644 3-11

FOR SALE: Massey Ferguson 90 Diesel, WF, 3 Pt, Dual Hyd, \$3,000 OBO; WD 45 Charlyn, Power Steering, 16.9-28, Newish Rubber, SolidTractor, \$1,750 OBO; TO30 Ferguson W/Loader, \$1,750 OBO. Please Leave Message With Phone Number, Will Return Your Call.  
 641-929-3741 3-11

2002 Yale OS030  
 STK# AV4126  
 Electric Standup Order Selector 3 Stage 90/195 \$3,500  
 Available Material Handling  
 515-264-8868

Visit Us On The Web @ [www.hawkeyetrader.com](http://www.hawkeyetrader.com)

## Specializing in Metal and Trim

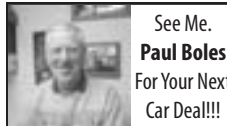
Serving the Midwest for 35 Years

## WAGLER METALS

VOICE MAIL: 641-722-3692  
 19049 Ice Ave • Bloomfield, IA 52537  
 2 Miles South of Drakesville



'09 JD Gator XUV, 4x4, 620 V-Twin, Kawasaki Motor, Low Miles  
 Lady Owned  
**DUKE'S YAMAHA KAWASAKI**  
[www.dukescycles.com](http://www.dukescycles.com) • Exit 210 • Fairfield, Iowa • 641-472-5600



See Me. Paul Boles For Your Next Car Deal!!!

### Boles Auto Sales

800-859-5518  
 319-385-7614  
 3 miles east of Mt. Pleasant on Hwy. 34  
[www.bolesautosales.com](http://www.bolesautosales.com)

## McCalment Farms

"Since 1941"



2 Year Old Bulls  
 660-947-3149  
 Cell: 660-216-2430



For Grain Bins, Legs, Dryers and all Accessories!  
**CALL US!**

PRODUCT • PRICE • PEOPLE  
**GRAIN BIN SUPPLY CO, LLC**  
 Cairo, MO 65239 • 660-263-6700

## Looking to Sell?

Contact Kevin or go to our website at

[www.mophbre.com](http://www.mophbre.com)



Kevin Small  
 Sales Associate



1966 25 Years of Service 2011

221 West Grand  
 Memphis, MO 62585

(660) 651 - 0655 (c)  
 (660) 465 - 7477 (o)

Licensed in Iowa & Missouri

[ksmall@mossyoakproperties.com](mailto:ksmall@mossyoakproperties.com)

WANTED TO BUY: Tractor, Grain Truck, Combine, Any Condition Considered Up To \$2,000 Per Item. Call Anytime.  
 660-988-5426 3-11

FOR SALE: AC 7060, 4750 Hrs, 20-8-38 With Duals C.H.A.  
 641-919-9370 3-11

FOR SALE: 1959 MF 50 Tractor, Fresh OH, PS, 3Pt Live Pto, Tires Like New, \$3,500 OBO. Located in Blakesburg.  
 641-208-0630 3-18

MINNEAPOLIS MOLINE 4 STAR TRACTOR WANTED: Narrow Front.  
 636-583-3855 3-18

WANTED: New Holland or Gehl Grinder Mixer and a JD 6-Row Planter.  
 641-521-7705 3-11

FOR SALE: IH 1486, New Paint, Good Tires.  
 641-452-6651 3-11



613 Richmond Ave., Ottumwa, Iowa 52501  
 Phone 641-684-5630 • Fax 641-684-5409  
 Toll Free# 866-881-4727 • [www.goldysauto.com](http://www.goldysauto.com)

## LAN-DOW BUILDINGS

"We Build to Suit Your Needs"



"H" Don or Dick Middleton

Memphis Lumber Co.

1-800-337-5858  
 Phone: 660-465-8595  
 Fax: 660-465-8596

## Cline's Spray Foam

Insulation Solutions

Open and Closed cell foam

FREE ESTIMATES  
 641.990.0366  
 Grinnell, IA

email us at: [rncline@dishmail.net](mailto:rncline@dishmail.net)

FOR SALE: 2 Parker Wagons 4800, \$3,000 & \$4,000 - 526 Bu.  
 641-452-6651 3-18

FOR SALE: JD 694A Planter 6-30, Excellent for Food Plots.  
 660-788-4027 3-18

WANTED: 1969-1970 JD 4520 Power Shift.  
 641-780-7564 3-18

FOR SALE: 1952 IH Super M, Parade Ready. Call in Evening.  
 \$2,500.  
 641-673-7925 3-18

## BROWN EQUIPMENT

Cumming, Iowa

515-981-4393

New Mahindra Tractors In Stock  
 5 Year Mfg. Warranty

1816Hst 18hp w/loader & mower.....\$14,900  
 2516Hst 25hp w/loader.....\$15,425  
 3016Hst 28hp w/loader.....\$17,225  
 3616Hst Cab 36hp w/loader.....\$26,900  
 4035 40hp w/loader.....\$26,625  
 7060 70hp 4wd w/loader.....\$32,400

New TYM Tractors In Stock  
 5 Year Mfg. Warranty

T273Hst 27hp w/loader.....\$15,700  
 T293Hst Cab 29hp w/loader.....\$19,900  
 T353Hst 35hp w/loader.....\$22,300  
 T503Shuttle Cab 50hp w/loader.....\$29,700  
 T723PS Cab 74hp w/loader.....\$39,600  
 T903 Cab 90hp w/loader.....\$49,500

Call Us With Your Tractor Needs

## DQ PRECISION PLANTING & TILLAGE, LLC

Chillicothe, MO

New Location: 2 miles east of Chillicothe, just off US Hwy 36 • Office 660-646-2150



### Kelly Diamond Harrows

- 45' - NEW • 30' - NEW
- 30' - Demo • 45' - Trade-ins



### Phillips Rotary Harrows

- 45' - NEW • 45' - 2009 Demo
- 43' - 2004 Trade-ins • 30' - 2009 Demos
- Seed Tenders
- Meridian - 240 & 375 • Convey All - 290
- Martin-Yetter
  - Residue Managers
  - Spiked Closing Wheels • Drag Chains
- Precision Planting Products
  - 20/20 Monitor • 20/20 AIR Force
  - Precision Meters • e-Set's

SCHULTE MOWERS  
 15' & 20' IN STOCK

[dqprecisionplanting.com](http://dqprecisionplanting.com)

George Quinn - (660) 646-8491

"We Farm with the Brands We Sell"



"Your Trader Goes A Long Way to Serve You"

• WOW • WOW • WOW •

**BUY HERE**  **PAY HERE**

**RON'S AUTOMOTIVE**

"WE FINANCE EVERYONE"

Drive Home Today From  
As Low As **\$500** Down

Ron Inman 1003 W. 2nd Avenue  
515-962-1966 Indianola, Ia. 50125

• WOW • WOW • WOW •

**MIKE'S GAME BIRDS**

2464 Benton Ave  
Mt. Pleasant, IA  
**319-696-1037**

Pheasant, Chukar, Quail!  
We Have Birds to Train  
& Freshen Your Dogs.  
Don't Let Low Bird Count  
Ruin Your Day  
We Can Provide Birds  
to Enhance Your Hunting!




**Sammon's Auto Sales**

New & Used Tires  
Used Glass

**800-371-7788**  
**319-258-7712**



**CLASSIFIED COUPON**

*Use the Power of Your Traders for Regional Classified Results!*

Clip this coupon to run a Classified Ad for \$7.00 for one week.  
1 Classified Ad for two weeks or 2 Classified Ads for one week for \$12.50.  
**Picture ads are not included with coupon, call for pricing.**  
(Each ad must be 20 words or less. 20¢ per word over 20 words.)

**AD NO. 1: (20 Words Or Less)**


**CROWN DENTAL CENTER**

AFFORDABLE DENTISTRY FOR TWO GENERATIONS

Complete set of dentures that are both attractive and functional

**STILL FROM ONLY \$599**

Since 2002, we have satisfied patients from 382 towns in Missouri and 23 states!

General Dentistry  
We Are Not Specialists And Can Offer All Dental Procedures In Our Central Location

**573-346-6062**

B.W. Austin, D.D.S.  
Crystal Strickler, D.D.S.



Dr. Austin with his daughter Dr. Strickler

246 East Highway 54,  
Camdenton, MO 65020



**GRABER'S COUNTRY STORE**

18932 200th St • Bloomfield, IA  
**641-664-3163 VM**

Highlands Wolverine  
**MultiShox®**  
Waterproof Mid Cut Hiker

**\$87.00**

M, T, W, F  
Sat 8-5

**AD NO. 2: (20 Words Or Less)**


**Triple Your Classified Ad's Power By Running It In The Traders**  
**The HAWKEYE TRADER, MID-MO TRADER & SHOW ME TRADER!**

When You Select All Three Traders, your Ad Will Be Read In Over 170 Counties In 5 States & Online!

HAWKEYE TRADER ONLY: 1 Ad For One Week \$7.00 (84 Counties)

HAWKEYE TRADER ONLY: 1 Ad For Two Weeks \$12.50 Or 2 Ads For One Week \$12.50 (84 Counties)

BOTH HAWKEYE & SHOW ME TRADER: 1 Ad For One Week \$12.50 or 2 Ads For One Week \$25.00 (150 Counties)

BOTH HAWKEYE & MID MO TRADER: 1 Ad For One Week \$12.50 or 2 Ads For One Week \$25.00 (106 Counties)

Best Value: HAWKEYE, SHOW ME & MID MO TRADER: 1 Ads For One Week \$18.00 (170 Counties)


Best Value: HAWKEYE, SHOW ME & MID MO TRADER: 2 Ads For One Week \$33.00 (170 Counties)

Best Value: HAWKEYE, SHOW ME & MID MO TRADER: 2 Ads For Two Weeks \$66.00 (170 Counties)

To Receive This Rate, Coupon Must Be Mailed In With your Payment  
Or Use Our Website @ [www.hawkeyetrader.com](http://www.hawkeyetrader.com)

**Hawkeye Trader, P.O. Box 96**  
**Pulaski, IA 52584**

**ANGUS BULLS**



2 YR. OLDS  
& YEARLINGS

- Calving Ease
- Carcass
- Growth

Thick correct bulls sired by Top Performance Sires.  
Our bulls have sired top rate of gain at 3 Iowa Bull Tests.

Select Your Bull Now, Delivery Later.

See Our Bulls before you buy.

**Phone: 641-675-3467**

**DORAN BOLLMAN**  
**PULASKI, IOWA**

**Headlock Systems**

Manufacturer Of High Quality Dairy & Barn Equipment

- Milking Parlors
- Loop Stalls
- Gates • Headlocks
- Water Bowls
- Gutter Grates
- Bale Movers
- Milker Cart

Bottom Release • Conventional Release

Manure Push Off  
Guard Comfort Stalls  
Grooming Chutes

Dealer For: **PB Zimmerman**  
Cattle Control Equipment


**Cantril Lumber** Cantril, Iowa  
Hours: Mon - Fri 7-5 • Sat 7-12  
Phone: 319-397-2351 • 1-888-791-9273



Brandt Grain Vac  
7500HP, higher capacity, longer life!  
In Stock

**GOLDEN GRAIN**  
Old Hwy. 34 East • Corning, MO  
1-800-566-3513





2005 Diesel  
New Holland TC55DA  
Tractor w/Loader 55HP,  
12 Spd Fwd/Rev Shuttle  
Trans, Model 18LA, New  
Holland Loader, Canopy  
Kit, Rear Wheel Weights,  
825 Hrs, Add'l Rear  
Remote Control Valve,  
Exc Cond, \$18,500  
573-478-1010

Authorized Dealer  
**MERIDIAN**  
MANUFACTURING GROUP

**HUGE Inventory On Hand!**

**Seed Tenders**

- 240 240 RT6-OS (1 yr) 6" cleated belt, electric start, variable speed, T14ST ..... \$14,000.00
- 240 RT6-OS (2 yr) 6" Cleated Belt, Electric Start, Variable Speed, T14ST ..... \$14,000.00
- 240 BWT8-OS (1 yr) 8" cleated belt, electric start, variable speed, scale, T14ST ..... \$18,500.00
- 240 BWT8-OS (1 yr) 8" cleated belt, electric start, variable speed, scale, T14ST ..... \$18,500.00
- 240 BWT8-OS (Used ONCE) 8" cleated belt, electric start, variable speed, scale, T14ST, ..... \$18,500.00
- 240 BWT8-OS (1 yr) 8" cleated belt, electric start, variable speed, scale, T14ST ..... \$18,500.00
- 240 RT8 OS (1 yr) 8" cleated belt, electric start, variable speed, T14ST, ..... \$15,000.00
- 240 RT8 OS (1 yr) 8" cleated belt, electric start, variable speed, T14ST, ..... \$15,000.00
- 240 RT8 OS (1 yr) 8" cleated belt, electric start, variable speed, T14ST, ..... \$15,000.00
- 240 RT8 OS (1 yr) 8" cleated belt, electric start, variable speed, T14ST, ..... \$15,000.00
- 240 RT8 OS (1 yr) 8" cleated belt, electric start, variable speed, T14ST, ..... \$15,000.00
- 240 RT8 OS (1 yr) 8" cleated belt, electric start, variable speed, T14ST, ..... \$15,000.00
- 375 RT8-OS (1 yr) 8" cleated belt, electric start, variable speed throttle, T21ST trailer ..... \$17,000.00
- 375 BWT8-OS GN 8" cleated belt, electric start, variable speed throttle, scale, 20K Gooseneck..... \$18,000.00
- 375 BWT8-OS (1 yr) 8" cleated belt, electric start, variable speed throttle, scale, T21ST trailer ..... \$18,500.00
- 375 RT6 OS 6" cleated belt, no trailer ..... \$8,500.00
- 375 RT6 OS GN 6" cleated belt, variable speed throttle, 20K Gooseneck..... \$14,000.00
- 110 BST 6" brush auger, pull start, manual cable throttle..... \$5,250.00
- 220 BST 6" brush auger, pull start, solenoid throttle, T12 ..... \$7,500.00
- 220 BST 6" brush auger, pull start, solenoid throttle, T12 ..... \$7,500.00
- Convey-all 290 6" belt conveyor, Honda engine, variable speed throttle ..... \$16,500.00
- Convey-all 240 6" belt conveyor, Honda engine, pull rope throttle, no trailer ..... \$5,000.00

**Used Seed Tenders**

**Bluff Ridge Inc.**

**877.468.2022**  
**712.468.2022**

Call Us Today!  
Website:  
[www.bluffridgeinccom](http://www.bluffridgeinccom)  
Email:  
[bluffridge@iowatelecom](mailto:bluffridge@iowatelecom)

**CONLEY SPRAY FOAM INSULATION**

Now Offering Injection Foam For Residential & Commercial Applications

Roof Foam • Closed Cell Foam  
Open Cell Foam • Roof Coating

Fully Insured

Dennis 641-799-0398  
Aaron 641-777-0449

CertainTeed  
**CERTASPRAY**  
Spray Foam Insulation



**Sukup** MID-AMERICAN GRAIN **Sukup**

Grain-Storage Handling Drying-Solutions

Let us help YOU with your next project for all your Grain Handling Needs From planning to installation and beyond No Job too Big or too small With Service after the Sale

- Grain Bins
- Catwalks
- Motors
- Concrete
- Dryer
- Receiving Pits
- Strators
- Repairs
- Air Systems
- Fans
- Repair Parts
- Motor Control
- Conveyors
- Heaters
- Layout Design
- Wiring
- Bucket Elevators
- Spreaders
- New Construction
- Automation

Water Early Discount are in Place to Save Now. Call John for a quote Today!!!

Mid-American Grain Equipment Distributors LLC Hwy. 136 1 mile East of Kahoka MO • 660-727-1090 - Phone

**FOR SALE: Charolais bull, 82 lb birth weight, easy calving, Wienk genetics, very thick, calm disposition ZOE Charolais, Curtis Plank 660-670-4721**

**MAST VINYL WINDOWS**

THERMO-PRO WINDOWS Custom Size Is Our Specialty Professional Installation Available

**FREE ESTIMATES**

22172 Hwy. 63 Bloomfield, IA 52537 **800-206-9949**

**Crown Power & Equipment**

www.crown-power.com

Used Equipment Description	SNR / Loc	Price
'08 Case IH 825R, 464 hrs, dual	# 27085 / C	\$198,800
'02 Cat MT765, 3634 hrs, 90% travel	# 37120 / Sa	\$123,200
'05 Case IH 825R, 190 pto hrs, L8172 loader	# 26579 / Sa	\$80,775
'00 Case IH 825R, 5895 hrs, dual PTO	# 26895 / Sa	\$68,200
'05 Case IH 825R, 135 pto HP	# 37344 / Sa	\$63,000
'07 Case IH 825R, 670 hrs, 95 pto HP, 84 8045 ldr	# 30384 / Sa	\$62,700
'03 Case IH 825R, 95 pto HP, 2950 hrs, CAH, MPD	# 26833 / Sa	\$43,450
'03 Case IH 825R, 80 hrs, 825 hrs, CH loader	# 37263 / Sa	\$39,800
'08 Case IH Farmall 95, 80 hp, 421 hrs, near new	# 37308 / C	\$37,300
'03 Case IH 825R, 82 pto hp, 1532 hrs, CH loader	# 37140 / Sa	\$33,000
(2) Case IH 2388 combines, (1) Case IH 1800 combine, (1) Case IH 1620 combine		
(1) J27120 combine, (1) New Holland TR88 combine		
(1) Kinze 3650 bulk 84 1501 rows, markers	# 36530 / Sa	\$82,500
(4) Kinze 2600 planters, various sides, use. Call for exact inventory and quotes		
(2) Case IH 825R planters, both 1600 rows, various other options, call for info		
Case IH RM0340 disk, 28 ft, hyd leveling, good blades	# 37242 / La	\$31,900
Case IH 2950 tandem disk, 32 ft, hyd leveling	# 37150 / Sa	\$28,800
DM Tigerhawk 8 field cultivator, 36.5 ft	# 37088 / C	\$27,500
DM 630 Coupler Ripper, 5 shank spring rest	# 36236 / Sa	\$11,500

Columbia 573-443-4541 Jefferson City 573-636-5281 Eldon 573-382-0230 Lepperton 660-347-5655 Salisbury 660-388-6425

**Yamaha & Lifan Scooters and Mopeds, 50cc & 400cc**

**DUKE'S YAMAHA KAWASAKI**

www.dukescycles.com • Exit 210 • Fairfield, Iowa • 641-472-5600

**New & Used In Stock**

**HERSHBERGER'S**

Vitamins Minerals THE NEW STORE Food Supplements

**BULK FOOD & GROCERY**

3/4 mi. E. of Drakesville, IA on 180th St. HOURS: 8 a.m. - 5 p.m. Mon-Sat **VM: 641-664-2661**

**Grinnell Mutual Reinsurance**

Claims Items For Sale By Bid

- 2007 Polaris FST Snowmobile, 700 cc w/Reverse, 1739 Miles, Damage to the Back End.
- 2007 Arctic Cat F8 SP Snowmobile, 800 cc w/Reverse 1100 Miles, Fire Damage to the Right Side.

These items are for sale as is by bid. Please submit your bid to Grinnell Mutual Reinsurance by 10:30 AM, Thursday, March 17, 2011. GMRC reserves the right to reject any or all bids. Contact Brian at 641-990-8529 or bthompson@gmrc.com Pictures available at www.grinnellmutual.com

**FOR SALE: 3<sup>rd</sup> and 5<sup>th</sup> Cutting Alfalfa Small Squares, \$5.25 to \$6.00. Delivery Available. Nice and Green, No Rain. Os-kaloosa. 641-638-1459 3-25**

**FOR SALE: MF 180 Perkins Diesel, New Tires, New Clutch, Great Working Condition, Wide Front. 319-725-6122 3-18**

**Are HIGH HEATING costs Burning Through YOUR MONEY?**

Save money by burning alternative fuels. We have efficient wood, coal and pellet stoves that will help take the worry out of the heating season. SS Class A SuperPro 2100 in Stock. Installation Available.

**GINGERICH STOVES**

3/4 Mi. East of Drakesville, south side, 19041 180th St., Bloomfield, IA 52537 Voice Mail 641-664-2814 Hours: M-F 7:30am-5pm; Sat. 7:30am-12pm

**Annual Customer Appreciation Days**

Friday, March 11 & Saturday, March 12 Refreshments **8% Discount Storewide**

**OPEN HOUSE SPECIALS**

Walnuts, Halves & Pcs, 5# .....\$2.99# After Discount  
Miracle Whip Salad Dressing, 1 Gal. \$4.99 After Discount  
Butter Quarters .....\$1.99# After Discount  
Sun Valley Sliced Ham, 8 oz (96%) . \$.59 After Discount

**Dutchman's** an old time general store.

**SAVINGS BY THE BAG FULL**

**99¢ per pound** John Morrell Fully Cooked Whole Bone-In **HAMS**

**99¢ per pound** 40# box \$1.29 lb. **Boneless Skinless Chicken Breast**

**39¢ per pound** #1 - Idaho Russet Baking Potatoes **39¢ per pound \$14.95 - 50# box**

**\$1.49 by the 10# box** or - 1 lb. \$1.89 **Pollock Fish Fillets**

**BULK GARDEN SEEDS** Shop Early For Best Selection!

**\$5.99 gallon** SAVE 50% reg. \$11.95 **Miracle Whip**

**\$2.25 1 lb.** **Butter**

**75¢ 10.5 oz.** **Jet Puffed Marshmallows**

**Onion Sets** **Seed Potatoes 8 different varieties 10# bag - \$12.95 39¢**

**WOW! \$3.99 lb.** California **Walnut**

**\$1.49 LARGE 50 oz.** **Condensed Cream of Mushroom Soup**

**\$1.49 Large Assortment Cereal** COMPARE & SAVE!

**2/\$1 397 g** **Ketchup**

Shop at Dutchman's Store for friendly, helpful service, low prices and unique merchandise.

**Cantril IA, 103 division st. 319-397-2322** Store Hours: Weekdays, 8 a.m. - 6 p.m. \* Saturdays, 8 a.m. - 5 p.m. \* Closed Sunday

Want to Receive this AD by Email? send request to - [dutchman@netins.net](mailto:dutchman@netins.net)

**Paris Classic Cars**

Hwy 149 S of Martinstown, MO Then West on Hwy AA **Quality Rebuilt Late Model Heavy Duty Pickups 660-355-4632 Early or Late**

<b>2005 Ford F150 Lariat</b> Loaded, 4x4, Leather, 60K <b>\$17,500</b>	<b>2005 Dodge Laramie</b> Dually, 4x4, Diesel, 74K <b>\$22,500</b>	<b>2008 Dodge 2500</b> Diesel, 4x4, 6 Spd, 51K <b>\$21,000</b>
<b>2002 Suburban Z71</b> 4x4, Loaded, Leather, 93K <b>\$8,995</b>	<b>2008 Dodge</b> 4x4, Diesel, 16K <b>\$22,000</b>	<b>1981 JD 4440, Power Quad, 970</b> Hrs on OH, Nice, Good Rubber, All the Goodies! CALL! <b>\$22,500</b>
<b>2006 Dodge 3500</b> Dually, 6 Spd, Dsl, 4x4, 100K <b>\$15,000</b>	<b>1988 Ford F350</b> 4x4, Dually, Diesel, 5 Spd, Hay Bed Works Good, Motor 40K	<b>2006 Dodge 2500</b> Crew, 4x4, Diesel, 61K <b>\$20,000</b>



**Grinnell Mutual Reinsurance Vehicle Sale**

- 2009 Lincoln MKS, AWD, 53,433 Miles...\$22,500
- 2008 Toyota Tundra, 4x4, Crew Max W/Topper, 84,100 Miles...\$21,500
- 2008 Toyota Tundra, 4x4, Crew Max W/Topper, 89,127 Miles...\$21,000
- 2008 Toyota Tundra, 4x4, Crew Max W/Topper, 99,820 Miles...\$20,000
- 2009 Chevrolet Impala LT, 75,622 Miles...\$9,500
- 2006 Chevrolet Uplander LT, 75,899 Miles...\$8,100

These vehicles are located at Grinnell Mutual Reinsurance, 4215 Hwy 146, Grinnell, IA  
Contact Brian at 641-990-8529 or bthompson@gmrc.com

**Neptune's Harvest Fish Fertilizer**  
a great plant food source for all crops

- **TCO-NuLife** for soil life restoration
- **TCO-MicroBalance** supplies micronutrients
- **TCO-Texture** increases oxygen and reduces compaction

**TrueCrop Organics**  
Alan Laird 573-231-6577

**TEUBEL SALVAGE**

**Dalton Double Tank Anhydrous Wagon Less The Tanks**

19387 Ice Avenue  
Bloomfield, IA 52537  
641-722-3844  
Cell 641-799-8371

**Lambirth Trucks & Parts**

1764 Hwy G76 • Attica, IA  
641-943-2551 • 800-932-1417  
1994 - 2009 Dodge Ram Parts & Repairs  
'08 6.7 Bluetech Engine, 34K • '04 5.9 Cummins Engine, 100K



<p><b>'95 GMC TOP KICK</b> 366 V8, Fuel Injected, 5 Spd., New Rubber! Dumpbox! <b>CALL!</b></p>	<p><b>'02 FORD F450</b> Super Duty, V10 6 Spd, 19.5 Rubber AC, 14' Dump Bed w/ Hitch, 4 Wheel Disc Brakes, 150K, Silver <b>\$9,995</b></p>	<p><b>'90 FORD L8000</b> 7.8 240HP, Diesel, 13 Sp., Air Brakes, 17' Box w/Liner, New Floats Front, Red, Clean, Big Truck <b>\$12,995</b></p>	<p><b>JCB 214 SERIES 2</b> Loader, Backhoe, Perkins DSL, Cab/Heat, Good Rubber, 4000hrs <b>\$17,995</b></p>
---	--	--	---



<p><b>'98 DODGE RAM 2500</b> Reg Cab, Cummins, 5 Spd., 4x4, Flatbed, 209K, Red <b>JUST IN</b></p>	<p><b>J &amp; I 9' FLATBED</b> 8' Wide, w/ Both Hitches, 2 Underboxes, Lights <b>\$1,600</b></p>	<p><b>'86 GMC HIGH SIERRA 1500</b> 350 V8, Auto, 4x4, w/ 8' Blade, Works Great! <b>\$3,995</b></p>	<p><b>'02 DODGE RAM 2500</b> Quad Cab, Gray Cab Lights, LB, 360, AT, 4x4, Alloys, Leather, 109K, <b>\$9,995</b></p>
---	--	--	---



<p><b>DEW-EZE BALE UNROLLER BED</b> w/Dodge Cummins Pump Brackets <b>\$3,500</b></p>	<p><b>HAY HANDLER</b> Self Unloading 6 Bale GN Double Latch Brakes No Tractor To Unload <b>\$3,995</b></p>	<p><b>NEW CIRCLE K BUMPERS DEALER!</b> Very Effective Deer Damage Eliminator <b>\$1,095 PLUS INSTALLATION</b></p>	<p><b>'91 CHEVY SUBURBAN LT</b> V8, Auto, Nicely Equipped, 3rd Row Seating, 4x4, Rear Air &amp; Alloys <b>\$3,795</b></p>
--	--	---	---

**We Buy Used Dodge Diesel Trucks Complete Or Wrecked!**  
**We Offer Full Service Diesel Repairs & Parts.**  
**Call Us Today For Your Parts & Repair Quotes!**

**YODER LUMBER**

**Full Line of Building Materials**  
**Bring Your Plans For Free Estimates**

**STORAGE BARNS**  
Available In Metal, Vinyl or Painted Siding!

**SYP CCA FENCE POSTS!**  
All Sizes In Stock!  
Call For Prices.

**Check Us For All Of Your Building Needs**  
Located 4 miles South of Drakesville on Ice Ave. or 4 Miles West of Bloomfield.  
Open Mon.-Fri. 7am-5pm • Closed Saturdays  
**641-722-3605**  
Owners, Joe Yoder & Daniel Yutzey



**Yamaha Majesty 400cc. Cruising Speed at 70 MPH**  
**DUKE'S YAMAHA KAWASAKI**  
www.dukescycles.com • Exit 210 • Fairfield, Iowa • 641-472-5600

**McCorkle Hardware**  
Where We Always Have The Best Priefert Prices!

**12' Premier Feeder Panel**

**250 lb. Capacity ATV Feeder**

**Economy Round Bale Feeder**

**Priefert Ranch Equipment**

**90°-180° Open Sweeps**  
Durable, Adaptable  
Versatile, Portable  
Reversible/With No Tools Required

**Columbia, Iowa - Your Complete Farm Store Since 1919**

**Phone: 641-943-2315 • Mon-Fri: 7:30-5:30 • Sat: 7:30-3:00**

**KINZE**

**We Have Extended Kinze Parts Sale Thru March 31st**  
**\*NEW KINZE PLANTERS\***  
3600 12R30 / 23R15  
3600 ASD - Mech 12-23  
3600 ASD Mech 16-31  
3600 ASD EV 16-31  
\*3600 ASD - EV 12-23  
Kinze 850-1050 Auger Carts  
**\*USED PLANTERS\***  
'04 KZ 3600 16-31 NT  
'05 KZ 3600 16R30 NT BT  
'00 KZ 3600 16-32 NT-T, BT  
'00 KZ 3600 16-31 NT

**\*NEW TRADE-INS\***  
'96 KZ 2200 12/30 NT, HF, BT  
'01 KZ 3600 16R31 NT  
'98 KZ 2600 8R38"/15R19"  
JD 7200 12R30, WF, Vac, 3 Bu. R  
'96 KZ 2200 12/30 NT, TW, HF, I PRC  
'92 KZ 2300 16/31 NT  
CIH 5400 SBS 11R15 w/ Pull Hitch  
'95 CIH 5400 SBS 15R15,  
On CIH Pull Hitch  
CIH 950 6-11 NT Pull Hitch  
**\*USED PLANTERS\***  
'98 KZ 2600 16R30 INS  
'94 JD 7200 FFF 12R30; TW Mech, Flex, Liq Fert  
'88 KZ EF 12R30 MF  
CIH 900 12R30 VE, DLA

**Prairie Ag SUPPLY**  
12372 Hwy 163 West  
Prairie City, IA  
515-994-3200

**Prairie Ag SUPPLY**  
12372 Hwy 163 West  
Prairie City, IA  
515-994-3200



2002 Tracker ZR2 4x4, AT, Power, 131K, Clear Title, Red \$5,995  
2004 Chevrolet Silverado K1500 Ext Cab, 4x4, Elec Shift, 5.3 Vortec, AT, Leather, 38K, Silver, \$18,900

2009 Chevy HHR LT, 2.2 Ecotec, AT, 30K, Red.....\$10,995  
2008 Chevrolet Aveo LS, 4 Cyl, AT, 48K, Clear Title, Black.....\$7,450  
2008 Chevy Aveo Hatch 4dr, 4cyl, AT, 44K, Clear Title, Black.....\$6,995  
2005 Impala, AT, Power, CD, AC, OnStar, Clear Title, 123K, Very Clean Car! .... \$5,850  
2005 Chevy Cavalier, AC, Cruise, CD Player, 4 Door, AT, 2.2, 88K, White..... \$4,750  
2004 Chevy Monte Carlo, SS Pkg, 3.8, 89K, Sunroof, Leather..... \$6,850  
2002 GMC Sierra SLT, 5.3 4x4, Leather, OnStar, New Tires, Clear Title, White. \$12,500  
2002 Chevy Silverado K1500, Ext Cab, 4 Dr, 4x4, 5.3, AT, AC, Power, Topper Clear Title, 96K, Nice Truck..... \$10,995  
1998 Buick LeSabre, 3.8, V6, Gray, AC, Cruise, PW, PL, Clear Title, 98K..... \$5,350  
1994 Chevy 3500, Dually, 4x4, 454, 5 Spd, Crew Cab, Nice, Clean Truck, 134K Maroon/silver..... \$6,250  
1985 Chevy, 350, AT, 2WD, 79K, Blue & Silver .....\$3,500

**ZEISET AUTO SALES**  
**660-397-9970**  
6 Mi. East of Baring MO on Rt K Hwy  
To See Our complete Inventory & Other Great Buys go to [www.zeisetauto.com](http://www.zeisetauto.com)





**1998 Chevy K3500**  
1 Ton, 4x4, 350 V8  
Auto, 8 Ft Flatbed  
Runs Good, 160K Miles  
Jerry's Truck & Equipment  
1014 S. Madison • Ottumwa, IA  
641-683-9358

\$3,995 OBO



**2004 Ford E350 Work Van**  
5.4L, 123,000 Miles  
Extended Box, Heavy Duty  
Hitch, Ladder Rack,  
Cruise, Good Tires  
**\$5,950**  
Contact Me Through Email  
Or By Phone At  
**660-341-5889**

**FOR SALE**  
**4-H & FFA**  
**Show Pigs**  
**Excellent Quality**  
**641-895-5283**

**Davis County Quail Forever**



**2nd Annual Banquet**  
**March 19, 2011**

**Bloomfield County Club**  
Social Hour - 5:00 • Dinner - 7:00

For Information or Tickets Contact  
**Michelle Combs - 641-664-3161**  
or **Josh Batterson - 641-777-5805**



**WHITETAIL TROPHY PROPERTIES**  
REAL ESTATE

Specializing in Selling Hunting Properties and Farmland

<b>RICH BAUGH</b> Agent, Land Specialist <b>319-750-9273</b>	<b>GABE ADAIR</b> Agent, Land Specialist <b>515-971-8182</b>	<b>JEFF PROPST</b> Agent, Land Specialist <b>636-209-0362</b>	<b>DEREK GRIMSRUD</b> Agent, Land Specialist <b>515-468-0663</b>
--	--	---	--

<p><b>Appanoose Co, IA - PRICE REDUCED - 103 acres mfl approx. 58 acres timber, 38.5 acres CRP, 5 acres tillable, creek \$2,750/acre</b></p> <p><b>Appanoose Co, IA - 126 acres mfl, 30 acres hay, balance in timber, brush, 2 ponds &amp; creek, \$233,100</b></p> <p><b>Davis Co IA - 49 acres mfl with mobile home, 37 acres timber and brush, 12 acres tillable, creek, \$1900/acre</b></p> <p><b>Davis Co IA - 93 acres mfl, 75 ac timber and brush, 10 ac tillable, food plots, 2 creeks, pond, \$1,881/acre</b></p> <p><b>Davis Co, IA - 200 acres mfl 70 ac CRP, 130 ac timber and brush, 2 ponds, established food plots and creek, \$2,050/acre, Broker/Owner Interest</b></p> <p><b>Davis Co, IA - 240 acres mfl, 180 ac tillable, balance in timber, brush, 3 ponds, creek, \$2,400/acre</b></p> <p><b>Davis Co, IA - PRICE REDUCED - 248 acres mfl, 170 acres timber, balance in tillable and hay, 5 ponds, and creek, \$2,125/acre</b></p> <p><b>Davis Co, IA - REDUCED - 320 ac mfl w/ nearly removed home, 100 ac till, 50 ac food plots, 150 ac timber, 2 ponds, awesome hunting farm, \$2,195/acre</b></p> <p><b>Decatur Co, IA - 824 acres mfl with home and outbuildings, 350 ac CRP, remainder in timber, brush, or CRP, 12 ponds, \$2150/acre</b></p> <p><b>Lee Co IA - 26 acres mfl of timber, 2 creeks, good stand of oak timber, \$2,400</b></p> <p><b>Lee Co IA - 98 acres mfl, 50 acres timber and brush, 21 acres CRP, 2 creeks, \$1935/acre</b></p> <p><b>Lee Co, IA - 136 ac mfl, 102 ac tillable, balance in timber, brush, creek &amp; pond, \$1,995/acre</b></p> <p><b>Lee Co IA - 146 acres mfl, all timber and brush, over 1 mile of Skunk River frontage, \$1395/acre</b></p> <p><b>Lee Co IA - 180 acres mfl, 120 ac timber and brush, \$2.5 ac CRP, 4 ac tillable, pond, creek, \$2600/acre</b></p> <p><b>Monroe Co IA - 120 acres mfl, 35 acres tillable, remainder in timber, brush, creek and pond, \$2350/acre</b></p> <p><b>Monroe Co, IA - 127 acres mfl, 80 ac tillable, 15 ac hay, balance in timber, brush, creek, \$2,032/acre</b></p> <p><b>Monroe Co IA - 180 acres mfl, 25.5 acres CRP, 83 acres tillable, remainder in timbered draws, creeks, pond, \$2350/acre</b></p> <p><b>Monroe Co, IA - 192 acres mfl, 107 ac CRP, 8 ac tillable, balance in timber, brush, creek, \$2350/acre</b></p> <p><b>Monroe Co, IA - 252 acres mfl, 161 ac CRP, 48 ac tillable, balance in timber, brush, creek, pond, \$2350/acre</b></p> <p><b>Monroe Co, IA - 358 ac mfl, 191.7 ac CRP, 10 ac alfalfa, approx. 156 ac timber and brush, 2 ponds, established food plots, \$1795/acre</b></p> <p><b>Monroe Co IA - 660 acres mfl with home and guest house, 200 acres tillable, 107 acres CRP, 4 ponds, remainder in timber, brush, and creeks, \$3250/acre</b></p> <p><b>Wapello Co, IA - 34 acres mfl w home, 4 bedrooms, 3 baths, 30 acres timber, 2.5 acre lake, and pond, \$339,500</b></p> <p><b>Wapello Co IA - 35 acres mfl, all timber, creek, pond, \$18,750</b></p> <p><b>Wapello Co, IA - 80 acres mfl, 65 ac timber &amp; brush, 15 ac CRP, established food plots, 2 creeks</b></p> <p><b>Wapello Co, IA - SOLD - 60 ac timber &amp; brush, 14 ac crops, 18 ac pasture, 2 ponds, creek, \$2,300/acre</b></p> <p><b>Hancock Co, IL - PRICE REDUCED - 96 ac mfl, 82 ac timber &amp; brush, 16 ac tillable, food plot, 2 creeks, \$2,500/acre</b></p>	<p><b>Adair Co, IA - 400 acres mfl, 37 acres mature timber, 240 ac CRP, 120 ac tree program, \$2,195/acre</b></p> <p><b>Appanoose Co IA - 54 acres mfl, 205 ac timber/brush, 120 ac CRP, 10 ac tree program, and 90 ac tillable, \$1800/acre</b></p> <p><b>Clarke Co, IA - 59 ac mfl, 44 acres timber and brush, approx. 15 ac tillable, \$1,800/acre</b></p> <p><b>Clarke Co IA 60 - acres mfl with cabin - nearly all timber and brush, foodplots, and pond, \$136,260</b></p> <p><b>Clarke Co, IA - 82 ac mfl with 2400 sq ft shop, 30x60 hoop building (32 ac tillable, 20 acres rough timbered draws) \$329,000</b></p> <p><b>Clarke Co IA - 111 acres mfl, 80 ac timber in TSI, planted fruit trees, and food plots, \$2250/acre</b></p> <p><b>Decatur Co IA 58 acres mfl - 48 acres mature white oak timber, 10 acres tillable/food plot, pond, \$1895/acre</b></p> <p><b>Decatur Co, IA - 160 acres more or less, 129 ac tillable, 31 acres timbered draws, 1 acre stocked pond, \$560,000</b></p> <p><b>Decatur Co IA 223 acres mfl with cabin - 137 acres CRP, 6 acres food plots, balance in timber, brush, and creek, \$542,752</b></p> <p><b>Decatur Co, IA - 480 ac mfl, 135 ac tillable, 48 ac cedar thickets, switch grass, and food plot, 36 ac CRP, balance in timber, \$2,600</b></p> <p><b>Lucas Co, IA - 58 acres mfl, 15 ac timber and brush, balance in tillable and grass, creek, and pond, \$1,750/acre</b></p> <p><b>Lucas Co, IA - 70 acres mfl with metal building, lodge, 37 ac pasture/timber, 25 ac tillable, 8 acre CRP, creek and pond, \$200,000</b></p> <p><b>Ringgold Co, IA - 90 ac mfl, metal building, 35 ac timber, 28 ac CRP, 10 ac brush, pond and creek, \$1800/acre</b></p> <p><b>Taylor Co, IA - 15 ac mfl, all timber, great area with pond, \$44,250</b></p> <p><b>Union Co, IA - PRICE REDUCED 105 ac mfl, w/2600 sq ft earth home, \$370,000, 100 ac beautiful timber, completely secluded</b></p> <p><b>Waman Co, IA - 25 acres mfl, less, 5 minutes from Des Moines, located along Middle River, \$8,000</b></p> <p><b>Waman Co, IA - 67 acres mfl, nearly all timber, great hunting, close to Des Moines, \$2485/acre, Broker/Owner Interest.</b></p>	<p><b>Appanoose Co, IA - 90 acres mfl, enrolled in WFP program, borders Chanton River, \$1,295/acre</b></p> <p><b>Clarke Co IA - 111 acres mfl, 80 ac timber, brush, and creek, balance in CRP, \$1800/acre</b></p> <p><b>Clark Co, MO - 32 acres mfl, 7 acres open, balance in timber and brush, \$2,300/acre</b></p> <p><b>Clarke Co, MO - 105 acres mfl, balance in timber/brush, \$1,975/acre</b></p> <p><b>Clarke Co, MO - 1,135 ac mfl, 875 ac timber, 155.4 ac CRP, and approx 100 acres of tillable/crop ground, \$1,895/acre</b></p> <p><b>Linn Co MO - 629 acres mfl, 135 ac tillable, balance timber, 2 ponds, several ponds, lake, and creek, \$1,800/acre</b></p> <p><b>Mercur Co, MO - 332 acres mfl, 100 ac tillable, balance in timber, brush, and 2 ponds, \$1895/acre</b></p> <p><b>Putnam Co, MO - 53 acres mfl, timber hunting tract near Woodville, 150 ac tillable, \$1,350/acre</b></p> <p><b>Putnam Co MO - REDUCED - 80 acres mfl, 50 acres timber and brush, 30 acres open/pasture, 2 ponds, \$1875/acre</b></p> <p><b>Putnam Co MO - 214 acres mfl, nice hunting mixture of about 50-50 timber and open areas, food plots, and hay ground, \$1650/acre</b></p> <p><b>Putnam Co, MO - 752 ac mfl w home, cabin &amp; metal building, 300 ac tillable, balance in timber, brush, lakes, ponds, &amp; creeks, \$1,849/acre</b></p> <p><b>Sullivan Co, MO - 442 acres mfl, 203 ac CRP, balance in timber, brush, food plots, and 5 ponds, \$1,895/acre</b></p> <p><b>Scotland Co MO - 120 acres mfl 79 ac CRP, balance in timber, brush, and foodplots, 3 ponds, creek, \$1,895/acre</b></p>	<p><b>Decatur Co, IA - 180 acres mfl w cabin, 30 ac tillable, 100 ac timber, balance in brushy pasture, creek, \$2,195/acre</b></p> <p><b>Guthrie Co, IA - 81 acres mfl with lodge, 70 acres timber, 2 ponds, creek, brush, and home site, \$1800/acre</b></p> <p><b>Lucas Co IA - 40 acres mfl with mobile home - 30 acres timber/brush, balance in creek and home site, \$1695/acre</b></p> <p><b>Polk Co IA - 64 acres mfl, highly productive tillable, 80's and 90's CRP, \$1800/acre</b></p> <p><b>Union Co, IA - 239 acres mfl, 18.7 acres CRP, 80 acres timber/brush, balance in pasture, \$2,295/acre</b></p> <p><b>Warren Co IA - 35 acres mfl - 30 acres timber, balance of acres are creek, small pond and access road, \$139,000</b></p> <p><b>Warren Co IA 37 acres mfl - 23 acres of hay alfalfa with balance in timber and brush, \$185,000</b></p> <p><b>Warren Co IA - 80 acres mfl, 36 acres timber, brush, and creek, 34 acres CRP, and 6 acres tillable, \$2,495/acre</b></p> <p><b>Warren Co, IA - 160 acres mfl, 35 ac hay, 15 ac pasture, balance in timber and brush, \$3,125/acre</b></p> <p><b>Harrison Co, MO - 1691 acres mfl w home, 50 acres timber/brush, 321 acres tillable, 783 acres CRP, 50 acres food plots, balance in homesite, creek, and 15 ponds, \$2,295/acre</b></p>
---	---	---	---

Call The Experts at Whitetail Trophy Properties (217)-285-9000 - Office  
Licensed in Illinois, Iowa, Kansas, Kentucky, Missouri, Nebraska

To View These Fine Properties, And Nearly 400 More Recreational And Farm Land Listings Log On To:  
**WWW.WHITETAILPROPERTIES.COM**

Trophy Properties Real Estate, LLC DBA Whitetail Trophy Properties 108 N Monroe PO Box 231 Pittsfield, IL 62363 Dan Perez, Broker

**Prairie Ag SUPPLY** 12372 Hwy 163 West  
Prairie City, IA 50228  
515-994-3200  
800-994-3202

**Used Scag Mowers**

Year	Model	Hours	Price
2001	Sabre Tooth	578	\$7,000.00
2008	Turf Tiger	395	\$6,500.00
2008	V-RIDE	255	\$4,500.00
2005	SABRE TOOTH	436	\$8,500.00
2003	TURF TIGER	1,841	\$4,500.00
2009	TURF TIGER	383	\$9,000.00
2010	TURF TIGER	10	\$13,500.00
1998	TURF TIGER	2,953	\$3,000.00
2009	WILDCAT	108	\$7,000.00
2008	V-RIDE	162	\$4,500.00
2008	TURF TIGER	658	\$6,000.00
2006	TURF TIGER	420	\$6,500.00
2009	TURF TIGER	265	\$7,500.00
2009	TURF TIGER	407	\$8,500.00
2008	TURF TIGER	800	\$7,500.00

www.prairieagsupply.com

FOR SALE: Seven 18" Yetter Plow Coulters W/Mounting Brackets. 314-520-4248 3-11

FOR SALE: 1996 CAT D6H XL/IG, 75% bottom, 30" pads, open station, complete forestry package, 8k hours, nice, must see. \$65,000 660-346-9289 or 660-775-2443 3-18

FOR SALE: 1990 Fiat Allis 14C 7000, Original Hours, New Engine, 70% Undercarriage, Farmer Owned, Very Good Condition. 217-985-4640 4-1

FOR SALE: JD 7200 Planter, 8-Row Wide Vac. Yetter Row Cleaners, Keeton Seed Firmers, Precision Seed Tubes, Good Condition. \$6,500. 515-689-4037 3-11

FOR SALE: For-Most Head Gates, Like New, \$575. 641-664-3336 3-11

**VanWyk Wood Builders**



**We Will Custom Build Your Shed Or Your Cabin!**  
**Call Shawn Today!!**

2043 West St. South • Grinnell, IA 50112  
**641-236-3070**  
www.vanwykwoodbuilders.com

Visit Us At The "Iowa Flower, Lawn and Garden Show"  
March 18th thru March 20th at the Iowa State Fairgrounds!