

# YOUR HAWKEYE TRADER

Phone: 641-675-3971 • Fax: 888-203-9720 • E-Mail: ads@hawkeyetrader.com

MAHASKA COUNTY HISTORICAL SOCIETY

## NELSON PIONEER FARM & MUSEUM

# 57TH ANNUAL FALL FESTIVAL

SATURDAY, SEPTEMBER 16, 2023

10 AM THRU 4 PM

PIONEER PICNIC | HISTORIC SKILLS DEMONSTRATIONS  
 LIVE MUSIC | VINTAGE VEHICLE PARADE | PONY RIDES  
 OLD-FASHIONED SPELLING BEE  
 STEAM ENGINE & ANTIQUE MACHINERY

TICKETS AVAILABLE AT THE GATE OR ONLINE  
 AT [NELSONPIONEER.ORG/EVENTS](http://NELSONPIONEER.ORG/EVENTS)

ADULTS \$10 | STUDENTS \$5 | KIDS 5 & UNDER FREE  
 SOCIETY MEMBERS FREE

### FAMILY FUN

SPONSORED BY |












## TRUCK GEAR BY LINE-X

### RETRACTABLE HARD TONNEAU COVER

- ▶ HEAVY DUTY ALUMINUM CONSTRUCTION
- ▶ SEALED BALL BEARINGS ALLOW SMOOTH, ONE-HANDED OPERATION
- ▶ LOW PROFILE DESIGN ENHANCES TRUCK STYLE
- ▶ TEXTURED, WHITE BLACK POWDER COATED FINISH LOOKS IN ANY POSITION
- ▶ SUPPORTS DISTRIBUTED LOADS UP TO 500+ POUNDS
- ▶ NO PULL STRAPS, VELCRO STRAPS OR SPRINGS
- ▶ LIFETIME END-TO-END WARRANTY



## TRUCK GEAR BY LINE-X

### BED COVERS

### FLOOR LINERS

### RACHETING TIE DOWNS



## Bumpers / Grille Guards



## Steps / Nerf Bars

## DECKED Drawer Systems

## Looking to Rent Vans?

### Standard Roof Height

- ✔ 15 Passenger Seating
- ✔ Cargo Carriers Available
- ✔ Day Trips or Long Excursions

Call us today!!

(660) 397-2551

### Medium Roof Height



View our vehicle inventory online



# BURKHOLDER

FULL LINE OF ACCESSORIES  
 Outfit your truck here!

660-397-2551 | 51001 State Hwy 15, Edina, MO 65557 | burkholdertrucksales.com





# Upcoming Auctions

View all upcoming auctions at [SteffesGroup.com](http://SteffesGroup.com)



**319.385.2000 | SteffesGroup.com**  
Steffes Group, Inc., 2245 E Bluegrass Road, Mt. Pleasant, IA



**1998 Yamaha Royal Star 1300**  
Windshield, Bags, Sissy Bar & Rack, Passenger Boards

**NO DOC FEES!** **\$3,995**

**C&C Cycle**  
Chariton, IA • 888-475-2243  
[www.cc-cycle.com](http://www.cc-cycle.com)

**AG RELATED**

**FOR SALE:** 2 Bottom Plow With Scraper, In Good Condition; Rear 3 Pt. Adjustable Blade, \$450. 641-572-0061 9-1

**FOR SALE:** JD-8820 Combines 1982 2WD; 1983 4WD 643 Corn Header; 922 Grain Head; 922 For Parts. Unverferth And Woodworth Wagons. 573-619-2043 9-8

**FOR SALE:** Tall Corn Ends For IHC 3200 And 3400 Series Corn Head. Ask For Mark. 712-830-1197 9-1

**FOR SALE:** JD 693 Cornhead, Poly Hydraulic Deck Plates, Single Point; Kuhn 10 Wheel Rake; 8 Hay Bale Trailer. 641-990-2432 9-1

**FOR SALE:** IH 1660 Combine, Field Ready, 3400 Hours, Both Heads. 515-669-0704 9-1

**FOR SALE:** MF 20 Ft. Flex Grain Table Off A MF 8780, Call. 319-931-2733 9-8

**FOR SALE:** NH 1 Row 818 Silage Cutter, Nice, \$950; JD 1 Row PTO Corn Binder With Carrier, Nice, \$950; 2 - 6x12 Deep Flare Wagons, PTO Run Apron Floor, \$1,150 Each; 6 Or 7 X 12 Heider Or Stand Hoist Hyd. Wagons; Midwest 5, 7 Or 10 Ton Hoists. Pomeroy, IA. No Text. 712-299-6608 9-8

**FOR SALE:** JD 725 FM Cultivator, 6R 30, Great Condition, Shedded For 30 Years, New Hoses, All Components, \$2,900. Bloomfield, IA. 641-664-1200 9-1

**20' & 40' Storage Containers**  
Starting at \$1,895  
For Sale or Rent



*Dry & Mouse Proof*

**ABC Portable Storage**  
Delivery Available  
563-299-2901

**NEW MOBILE HOMES**

Prices Start At \$64,900  
Delivered And Setup

**573-499-9993**  
[columbiadiscountshomes.com](http://columbiadiscountshomes.com)

**FOR SALE:** OCIA Certified Organic Yellow Corn, Alfalfa/Grass Hay, Oat/Hay. 1969 JD 55 Combine With 2 Row Cornhead In Excellent Condition, Always Inside. 641-751-8382 TFN

**FOR SALE:** New 3 Pt. Tillers, Heavy Duty, Gear Driven, 7 Ft. To 12 Ft. Starting At, \$4,150. 660-874-4455 12-21-23

**FOR SALE:** Certified Organic Yellow Corn, Oat Hay And Alfalfa Grass Hay. 641-751-8382 TFN



**5-STAR SPRAY FOAM INC.**  
BROOKLYN MONTEZUMA

**We Now Offer CONCRETE RAISING & LEVELING**

Open Cell & Closed Cell Foam  
Call or Email Craig  
**641-328-4163**  
fivestarsprayfoam@gmail.com

NEW CONSTRUCTION, REMODELS, POLE BARNs  
CRAWL SPACES, ATTICS & MORE  
**Free Estimates • Fully Insured**  
[WWW.5STARSPRAYFOAM.COM](http://WWW.5STARSPRAYFOAM.COM)

**DES MOINES DIESEL INC**

Servicing All Your Diesel Fuel Injection Needs

**Pumps, Nozzles & Turbos**



**Ag & Truck Performance Parts**

1-800-475-6086 • 515-265-7318  
3211 Delaware Ave Des Moines, IA 50313  
*1 Blk E. of the ADM Soybean Plant*

**LABOR DAY**



**BUYERS & SELLERS WANTED**

**NEXT AUCTION | SAT., NOVEMBER 4TH, 2023**







join us on facebook! 

**2023 CONSIGNMENT AUCTION**  
Shay Esbeck 660-605-0839 | Barney Esbeck 660-605-0841 | Justin Harlow 660-605-2346

**B&S EQUIPMENT AUCTION** **CALL TODAY!**

HAULING AVAILABLE • LIVE & ONLINE BIDDING • NATIONWIDE ADVERTISING • CONSIGN NOW!  
[BandSequipmentsales.com](http://BandSequipmentsales.com) **GALLATIN | MISSOURI**

**BUY | SELL | TRADE | EVERY DAY**

**We Now Have Most Models of New Rangers & Razors in Stock!**



**Call Dean or Tim to Get Your New Polaris Today!**

**Slayton POLARIS**

8 Miles South & West of Pulaski, IA  
[slaytonpolaris.com](http://slaytonpolaris.com)  
**660-328-6627**



**Specializing in Roll Forming**

• Pole Barn Packages

• Re-Roofing

**Full Line of Building Materials**

1187 Orange Ave, Kalona

**319-646-1103 vm**

**Bring In Your Plans for  
a Free Estimate**



**FOR SALE:** M-M Motor Parts G-1000 UP-G Parts Tractor 5 Star U Standard, Come Look Have More. 660-341-6318 ETFN

**AUTOMOTIVE**

**WANTED TO BUY:** 1969-1972 GMC 3/4 Ton, 4x4, Long Bed. No Project Vehicles. Looking For A Good Clean Driving Truck. 573-544-3783 9-1

**FOR SALE:** Bushog 2715 15 Ft. Batwing, \$8,500. M&W Batwing, \$6,500. Sidewinder Batwing, \$2,500. John Deere 216 16' Flex Head, \$600. Shelbyville, MO. 573-470-3358 9-1

**FOR SALE:** 1977 Chevy Nova, 2 Door, All Original, V8 Auto, P/S, P/B, A/C, Needs Restored, Runs & Drives, \$4,000 OBO, Troy. 636-462-2221 9-1

**FOR SALE:** 24 Ft x 5 Ft Free-Standing Cattle Panels, Weighing 600 Lbs Each, Fastener Chains Included. Located in Troy, IA. 641-680-0892 TFN

**"One Man's Junk Is  
Another Man's Treasure!"  
Sell It in the Hawkeye!**

**NO DOC FEES!**

**Stop By & See Our Great Selection of Used Trikes!**

**C&C Cycle  
Chariton, IA • 888-475-2243  
www.cc-cycle.com**

**September**

**We want to purchase & market your grain.**



**Buyers of Corn and Soybeans.  
Organic & Non-GMO Corn and Soybeans.  
Contracts Offered • Forward Pricing**

**Baring Elevator** L L C

**CONTACT US FOR PRICING  
Baring, MO  
660.892.4411  
baringelevator.com**



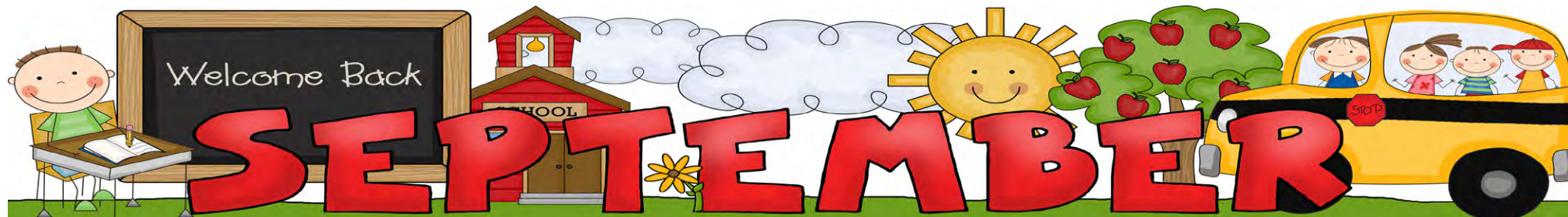
**2 out of every 5 fake pills that have fentanyl**

**CONTAIN A  
POTENTIALLY  
LETHAL DOSE.**

**According to DEA lab testing.**



**YOUR  
LIFE  
IOWA**  
Iowa HHS



# Live Auction

*Auction*  
"We sell it the day you need it sold!"

**Daugherty**  
AUCTION & REAL ESTATE SERVICES, LLC

**Saturday, September 9th, 2023**

**11 a.m. on site**

**3298 Lisbon St. St Charles, IA 50240**

(I-35 to Exit 56. Take IA-92 East turning South on 40th Ave. Turn West on Kirkwood to 33rd Ave. South to sale)



**2005 John Deere 8120 Tractor**

1 Owner, 4822 Hours, Serviced

100% Working Order, A/C & Heat, Quick Tach Power Shift, Full Set of Weights, All New Tires 3 PTOs, HID Light Package, 4 Hydraulic Ports



**Very Partial Listing of Equipment and Items!**

Power Washing Trailer Set Up-250 gal tank  
John Deere 230 Folding Disc  
18' Enclosed Trailer  
Rancher Series 2 Batwing Mower 15' wide  
Northstar Hot Power Washer 220 volt  
Ellis Horizontal Band Saw  
Welding Table- hooded vent, 1/4" top on castors  
Kenwood Radios, UHF Narrow Band Compliant  
Fire Safe, Office Desks, Bookcases  
Airway Assist Lift 12/5L/15SL Tires  
600 gal Diesel Tank- Like New  
Tool Boxes- Loaded with Tools  
18 volt DeWalt Tools, Power Tools  
Plasma Cutter, Acetylene Tanks  
Trailer Wire-14-4 14-6 14-7, Lights, Connections  
Porta Power, Specialty Tools  
Steel Work Bench and Pipes Inventory  
25 ton Air Jack, Hydraulic Parts/Pumps/Fittings  
45 ton Iron Worker with Dies  
8.3 Cummings Filter Inventory  
Irrigation Parts and Gaskets  
Flammable Safety Cage, Antique Wagon Wheels  
Warehouse Shelving, Bolt Bins- Full  
Motorcycle Parts, Exhaust Items  
Axel and Wheels for Trailers  
Tires- 22/5, 24/5, 235/85 R-16 w/ 9 bolt rims  
Fluids, Grease, Fittings, Job Boxes  
Roller Chains, Wrenches, Sockets, Hand Tools  
Sand Paper Inventory Disc 8"  
1"-3" Cam Locks, Mowers, Generators

**Daugherty Auction and Real Estate Services, LLC.**

Chad Daugherty - Owner/Auctioneer  
103 N 9th St. Suite A Adel, Iowa (515) 993-4159  
Email- [d\\_auction@hotmail.com](mailto:d_auction@hotmail.com)  
Website- [www.daughertyauction.com](http://www.daughertyauction.com)

The information in this brochure are from sources deemed to be reliable but it cannot be guaranteed by Daugherty Auction and Real Estate Services, LLC.

**LIVESTOCK**

**BULLS FOR LEASE:**  
Over 70 Registered Angus & Hereford To Choose From. 90 Day Lease, \$900. Trucking Available At Extra Charge. Kingdom City, MO. 573-999-3197 TFN

**MISC**

**HUGE TRUCKLOAD:**  
Mattress Sale!!! Call To See When They Arrive!

**Bargain Warehouse**

**Memphis, MO**  
660-465-2591

9-1

**FOR SALE:** 1 Or 2 Horse Parade Wagon, \$375, \$575; Steel, Rubber, Or High Wheel Wagons With Boxes; 50 Ft. Elevator, 20 Inch Wide, For Hay, Grain, Or Wood, Etc \$475; Lots Of Old Machinery For Farm Use, Parades, Decoration. They Don't Make It Anymore. People Are Cutting It Up And There Will Be No More! Pomeroy, IA. No Text. 712-299-6608

9-8

**DAVE'S:** Mobile House Washing And Pressure Wash, Decks, Patios And Driveways. Removing Dirt, Mold And Algae. 319-371-5222

9-9

**WE HAVE PLUMBING PARTS:** Hydrants, PVC, Pex, Poly, Toilets, Faucets And Much More. Contractor Discounts. Gingerich Stoves LLC. Drakesville, IA. 641-722-3540

9-1

**SCOTT HUSKEY'S INSULATED SKIRTING SYSTEMS:** Keeps Your Home Cooler In The Summer - Warmer In The Winter - Saves On Utilities And Looks Great! Since 1972. 573-696-3468 TFN

**EARBUDS:** Wireless \$59 A Set.

**Bargain Warehouse**  
**Memphis, MO**  
660-465-2591

9-1

## FALL MACHINERY CONSIGNMENT AUCTION

**Saturday, September 9th, 2023 @ 8:30 a.m.**

Five Star Auction Building - 2530 Hwy 22 - Riverside, IA

**Tractors, Skidsteers:** Case 1840, Hr Meter Not Working, New Aux Pump, New Radiator; '16 Mustang 2026 Skidsteer, 1620 Hrs, Very Nice; Deutz 5506 Tractor, 10,000 Plus Hrs; Case 870 Agri King Diesel Tractor, Powershift, 5860 Hrs; Oliver 1800 Gas Tractor, Loader; Onan 30KW Stand By Generator 6 Cyl Ford Engine, Transfer Switch, 1550 Hrs, LP; '52 Farmall Tractor/Loader, Runs Good; IH 886, 6,000 Hrs; JD 6220, FWA, Canopy, Rollbar; Bush Hog Loader, Hrs Unknown; Mustang 930A Skidsteer; Hay Forks; Pallet Forks; Skid-steer Backhoe Attach. **Vehicles, Trailers:** '54 Armstrong Low Boy Semi Trailer, Title; 53 Ft Semi Van Trailer, Pulls Ok; 2000 Reifer Enclosed 53 Ft Semi Van Trailer, Very Good; '08 3/4T Chevy, Single Axle, Diesel, Crew Cab, 4x4, 250K Miles; 2000 Ford Pickup; 1926 Model T; '08 Ford Escape SUV, AWD, 160K Miles; '99 Lincoln Town Carn (Executive), 89K Miles; '06 Dodge Magnum Car, 2.7L V6, 220K Miles; BH 6x10 Utility Trailer; BH Truck Bed Topper Trailer; 8x20 Storage Container; '97 United Expressline 8x28 Enclosed Cargo Trailer, Ramp Door, 2 Entry Doors, Very Nice; 8x12 Trailer; Hootridge GN 8 Bale Trailer; BH 8 Bale Trailer x2; GN 8 Bale Trailer; '89 Featherlite 7x24 GN Livestock Trailer; 2 Alum Semi Header Racks; 1 Semi Steel Header Rack; '82 Chevy Tioga Arrow Motorhome, 70K Miles; BH 6x12 Trailer, Ramp Door; Bass Tracker Fishing Boat, 50HP Evinrude Engine. **Construction, Shop Tools:** 2 Hayracks of Painting Contractor Tools, Paint & Supplies; Numerous Hayracks of Small Tools; Cherry Picker; New Hobart Welder; Drill Press; Cutting Torches; Materials Lift Hitch Hoist MR-2001 45 Ft; Trailer Air Compressor, Chicago Pneumatic 185; Hydraulic Hose Repair Station w/All Dies; NG Shop Furnace; Oster Pipemaster Threader, 110V; Kysor Johnson Bandsaw, Cuts 8x12 Sq or 9" Round Steel; Sanborn 60 Gal Upright Air Compressor; Truck Toolboxes; Ladder Rack for 1/2T or Smaller Pickup; (New) DeWalt Tools, Batteries, Chargers, Impacts, Grinders, Hammer Drills, Sawsalls, Etc; (New) Milwaukee Tools, Batteries, Impact, Hammer Drill, Sawsall, Circular Saw, Blower; Lots of Wrenches & Sockets; 20T Hydraulic Press; Forney Model 275 Welder; Hydraulic Cylinders; Rollaway Toolboxes; Shop Press; Bolt Bins; 20T Hyd Press; Air Compressors; Welding Tables; Metal Racking; Asst Ext Ladders. **Harvest Equipment:** Brant 1070 Auger/Swing Hopper; Kewanee 40 Ft Elevator; 24 Ft Drying Floor, Fan, Parts; 12 Ft Westfield Hopper Auger, Elec Motor; Brent 420 Grain Cart, Scales; Numerous Gravity Wagons, 250-400 Bu; JD 930 Cornhead; Case IH 1020 20 Ft Platform Header; 2 JM 350 u Gravity; JD 216 Grain Table, JD Gear; Killbros 350 Bu Gravity; JD 930 Bean Head, Full Fingered; JD 843 Cornhead, Pixel Rolls; Year Round 500 Bu Gravity; Aeration Fan. **Tillage Equipment:** United Farm Tool 12 Ft No Till Drill, 10" Spacing; Heavy Gear w/2-500 Gal Storage Tanks, Squeeze Pump; JD 400 Rotary Hoe x4; Pull Type Tile Plow, 4-6-8" Boots; DMI 16 Ft Coulter Champ Chisel Plow; JD 8 Ft Disc; 3 Pt Turbo Built Tree Planter Plow; Clegg Tree Spade, 3 Sets of Blades, Up to 24"; Great Plains Turbo Till 1500 Vertical Tillage; Kinze 6R 30" Planter; 18 Ft Harrowgator; Kewanee 1010 20 Ft Wing Disc; IH 710 4-18 Semi Mount Plow; Hiniker 4R Cultivator; IH 490 20 Ft Wing Disc; Buffalo 6R Cultivator, Scout Guidance System; 10 Ft Chisel. **Hay & Forage Equipment:** JD Mx8 Rotary Mower; JD Model 27 Stalk Shredder; Bush Hog 5 Ft Rotary Mower, Brush Pan; JD 640 4 Bar Rake; JD 660 4 Bar Rake; Keltec Bale Slicer; JD 20 Ft Stalk Shredder; Ogden 12 Wheel Hayrunner Rake; JD 535 Round Baler, Monitor; 3 Pt Bale Sear; Kelly Ryan Silage Unloader Conveyor, 10 Ft Wide, 12 Ft Long; NH 770 Chopper Hay & Corn Head; Gehl 1540 Silage Blower; NH 770 Hay Head; Several Bale Trailers; Vermeer 10 Wheel V-Rake; Meyers Silage Wagon; NH 67 Hayliner Small Sq Baler. **Farm Equipment:** Artsway 425 Grinder; Artsway 325A Grinder; Kewanee 8 Ft Blade; 84" New Brush Grapple; AW450 Grinder, Scales, Hydraulics; IH 6 Ft Blade; AW475 Grinder, Scales; NH 352 Grinder; 6x12 Barge Wagon, Hoist, Roof; MB 350 Meyers Tandem Manure Spreader; Buhler Farm King 600 Snowblower; Case Grapple Bucket; Kewanee 7 Ft Blade; Hone Wagon; 2 Heider Grainovators. **Livestock Equipment:** Bulk Bins of Asst Sizes; Lots of Gates, Wire Panels; Hog Equipment; Transfer Pumps; Steel Posts; Electric Fencing; Wooden Posts; Creep Feeders; 14-250 Gal Totes. **Lawn & Garden:** Kubota Zero Turn, Rear Discharge Mower, Low Hours; Several Rider Mowers & Zero Turn Mowers; Lots of Misc Steel & Lumber, Lawn & Garden Items; Honda 250 4-Wheeler; Polaris 4-Wheeler.

**Auctioneers Note:** This is a Very Early Listing; Items Coming in Daily. Watch Website for Updates & Pictures. Running 5 Rings Throughout the Day. (Select Items) Online at 11:00 AM. Accepting Items Monday, August 28th Through Thursday, September 6th, 8-5 PM; Closed Sunday. Online Items Need to be in by Tuesday, September 5th.



**Auctioneers: Delmar Yoder 319-430-2711**  
**Lonnie Miller 319-461-0019**  
**5starauction.com**

# WHAT IS DREDGING???

DREDGING IS A PROCESS USED TO REMOVE ACCUMULATED SEDIMENT FROM THE BOTTOM, AND IN SOME CASES, THE BANKS OR SIDES OF A RIVER, LAKE, STREAM OR OTHER BODY OF WATER. A SPECIALIZED PIECE OF EQUIPMENT CALLED A DREDGE CREATES A VACUUM THAT SUCKS UP AND PUMPS OUT THE UNWANTED SEDIMENT AND DEBRIS.



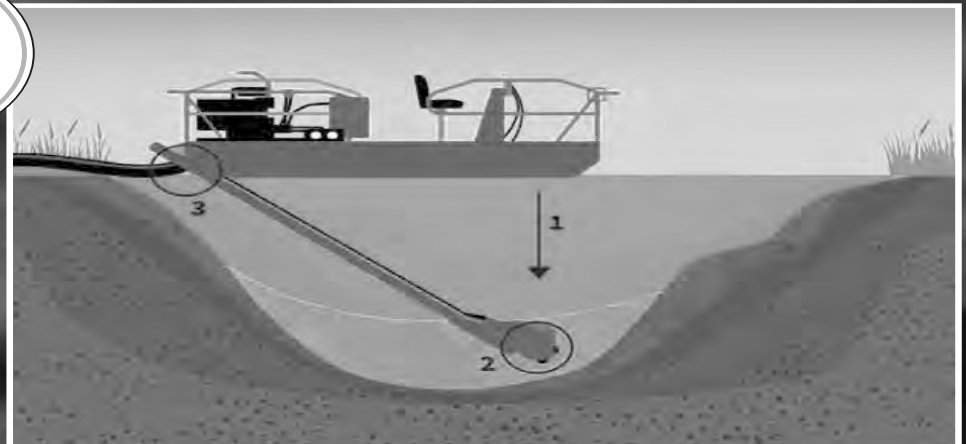
[iowadredging.com](http://iowadredging.com)

## IOWA DREDGING

Doug 641-980-0828  
Rusty 515-300-1290  
[iowadredging@gmail.com](mailto:iowadredging@gmail.com)

SERVING  
IA, MO, IL,  
NE & KS

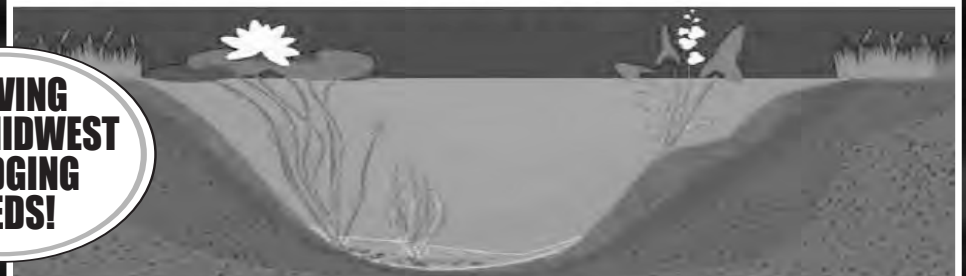
Iowa Dredging utilizes a compact dredge engineered specifically to facilitate removal of sediment in HOA Ponds - Sediment Basins Rural - Farm Ponds & Small Lakes.



- 1** Operator lowers boom to the bottom of the body of water.
- 2** Rotating cutter-bar uses teeth to loosen settled material, as the submersible pump removes sediment from the bottom of the body of water.
- 3** the debris is transported away for final processing.

### THIS PROCESS IS USED FOR

- > CREATING WATERWAYS
- > REOPENING CHANNELS
- > RESTORING SHORELINES
- > MAINTAINING ECOSYSTEMS
- > GATHERING CONST. MATERIALS
- > REMOVING TRASH & DEBRIS
- > RECONFIGURING WATERWAYS
- > INCREASING WATERWAY DEPTH
- > MINING FOR METALS
- > & MORE!



Doug 641-980-0828  
Rusty 515-300-1290  
[iowadredging@gmail.com](mailto:iowadredging@gmail.com)

**CALL US TODAY  
TO GET YOUR  
PROJECT SCHEDULED  
FOR 2023!**

SERVING  
YOUR MIDWEST  
DREDGING  
NEEDS!

[www.iowadredging.com](http://www.iowadredging.com)

**- Want to Buy -**  
 Silver Coins Dated Before 1964  
 Buying Old Coin & Currency Collections  
 Paying Top Cash on the Spot  
 for Over 50 Years  
 Buying Sterling Silverware & Casino Strikes  
 Deliver to My Office or I Will Pick Up  
 at Your Home or Bank  
**WALLIS COMPANY**  
 MAX HAGEN • Cedar Rapids, IA  
**319-360-0213**

Clip & Save This Ad

**MAST VINYL WINDOWS**  
 THERMO-PRO WINDOWS  
**Custom Size Is Our Specialty**  
 Professional Installation Available  
**FREE ESTIMATES**  
 22172 Hwy. 63  
 Bloomfield, IA 52537  
**800-206-9949**

**Golden Grain Bins Summer Savings**

Grain Bins	Floors W/12" Supp. & Flashing
18'x18' 4,195 Bu. \$7,029	18' \$1,962 30' \$5,476
27'x21' 11,265 Bu. \$14,108	21' \$2,682 36' \$7,801
42'x24' 32,245 Bu. \$33,886	27' \$4,474 42' \$10,263

**GMLS Industries, Inc.**  
 PH: 660-699-2179  
 Or 888-983-2136  
 www.gmlsindustries.com

**1999 Softail Custom**  
 6" Over on New Spring  
 End, Kick Electric,  
 Freedom Exhaust,  
 Custom Bars & Seat  
 and Forward Controls

**NO DOG FEES!** **\$7,995**

**C&C Cycle**  
 Chariton, IA • 888-475-2243  
 www.cc-cycle.com

**NOTICE!**  
**THE HAWKEYE TRADER**  
 reserves the right to refuse any ad or to edit any portion of an ad at any time. **The Hawkeye Trader** will give credit for only one week of incorrect ad copy. If there is an error in the first week's publication, call our office and an adjustment will be made. In case of error your ad may be run in the following week's edition at no charge or you may request a refund or credit on your bill. **The Hawkeye Trader** does not accept liability for any loss or damage caused by an error or inaccuracy in the printing of an ad beyond the amount paid for the space occupied by the advertisement in which the error occurred. **The Hawkeye Trader** cannot guarantee specific page or location placement of any ad. There will be a \$10 check return fee for any NSF check. We are not responsible for illegible copy received in mail. If your item in the paper is sold before your ad runs out or after we receive it we will issue you credit for further advertising. Any pictures for display ads received become the property of **The HawkeyeTrader** unless accompanied with a self addressed stamped envelope.

**2017 Heritage Softail**  
 Custom Exhaust,  
 Custom Crash Bar,  
 Rear Floorboards,  
 Only 9K Miles

**NO DOG FEES!** **\$13,999**

**C&C Cycle**  
 Chariton, IA • 888-475-2243  
 www.cc-cycle.com

**CUSTOM BUILT PAINTED & VINYL BUILDING & SHEDS**  
 16 YEARS EXPERIENCE  
 Many Styles & Optional Features Available  
 FREE DELIVERY WITHIN 30 MILES

**Hillview Mini Barns**  
 David W. Schrock  
 VM: 641-664-2842  
 15383 180th St  
 Drakesville, IA

**Now Is The Time To Buy Hardy Fall Mums**

Have Large Selections Of Multi Color and Sizes  
 Hours M-Sat 8-6 • Closed Sunday

5 1/2 Miles West of Keosauqua, IA on J-40 Then 1/2 Mile South on Heather Ave  
**Langacher's Greenhouse**  
 22583 Heather Ave  
 Keosauqua, IA

**NEW INVENTORY**  
 \$59,900 Delivered And Setup, Hurry!  
**Call Adam:**  
 573-657-2176  
 amegamobilehomes.com

**FREE HEAT & HOT WATER:** Eliminate Monthly Heating Bills w/Classical Outdoor Wood Furnace. No Sunday Calls.  
 660-707-3866 TFN



**SAM'S RIVERSIDE REPAIRABLES**  
 805 SE 30th St • Des Moines, IA • Phone 515-265-1212 • Toll Free 800-308-4096 • www.samsriverside.com  
 REPAIRABLES 515-265-1212 PARTS 515-265-8792 HEAVY TRUCKS 515-265-1656

 2020 Chevrolet Tahoe LT 4x4, Theft, 5.3L, 8 Cyl, 69,402 Miles \$29,900 SKU:L46201	 2019 Ford F150 XLT Crew Cab, 4x4, 5.0L, 8 Cyl, 64,468 Miles \$22,900 SKU:K35653	 2020 GMC Sierra 2500HD Denali 4x4, Theft, Regular Title, Diesel, 6.6L, 8 Cyl, 38,057 Miles, \$59,900 SKU:L15612	 2013 Chevrolet Tahoe LTZ 4x4, Regular Title, 5.3L, 8 Cyl, 94,411 Miles \$19,900 SKU:D98580	 2023 Nissan Rogue SV AWD, Regular Title, 1.5L, 3 Cyl, 83 Miles \$28,900 SKU:P10649
 2015 Toyota Sienna LTD Premium Theft, 3.5L, 6 Cyl, 62,568 Miles \$22,900 SKU:F51711	 2015 Nissan Frontier SV Extended Cab, 4x4, 4.0L, 6 Cyl, 82,187 Miles \$15,900 SKU:F10790	 2017 Subaru Forester XT AWD, 2.0L, 4 Cyl, 42,000 Miles \$19,900 SKU:H58082	 2018 Ford Expedition Max XLT 4x4, 3rd Row, 3.5L, 6 Cyl, 71,474 Miles \$26,900 SKU:E31315	 2022 Ford Explorer King Ranch 4x4, 3rd Row, Theft, 3.0L, 6 Cyl, 5,441 Miles \$45,900 SKU:N57119
 2019 Chevrolet Silverado 2500 LTZ Crew Cab, Diesel, 4x4, Theft, 6.6L, 8 Cyl, 30,861 Miles, \$47,900 SKU:K68119	 2013 Chevrolet Spark LS Hatchback 1.2L, 4 Cyl, 57,599 Miles \$8,950 SKU:D88241	 2013 Dodge Grand Caravan SE 3rd Row Seating, 3.6L, 6 Cyl, 86,433 Miles \$9,950 SKU:D17058	 2015 Chevrolet Impala LTZ Theft, 3.6L, 6 Cyl, 83,110 Miles \$14,900 SKU:F41205	 2004 Chevrolet Colorado LS Z71, Extended Cab, 4x4, 3.5L, 5 Cyl, 84,714 Miles, \$10,900 SKU:498961

**Our Hours Are 8:00 AM - 5:00 PM M-F • Sat 8:00 AM - 4:00 PM**

## Harbison Brush Mowing

Brush Mowing • CRP Fields • Timber • Trails  
Pasture Cleanup • Tree Shear • Fence Rows

**Jeremy Harbison**

Cell: 319-461-0376

Home: 319-694-2300

## HARBISON FENCING

"For All Your Fencing Needs"

Barbwire • Woven Wire  
Silt Fence • Vinyl Fencing  
Hi Tensile

319-694-2300 - Home

319-461-0376 - Cell



**2021 Road King**  
Bags, Windshield, Sissy Bar, Luggage Rack, Floorboards, Chrome Frt Forks, Headlight Bevels, Only 6K Miles

**NO DOG FEES!**

**\$19,995**

C&C Cycle  
Chariton, IA • 888-475-2243

[www.cc-cycle.com](http://www.cc-cycle.com)

## Metal Roofing



Buy Direct



641-664-3990

[www.awmetal.net](http://www.awmetal.net)

## FOR SALE

Driveway Fabric Rolls  
Commercial, Heavy Duty  
Designed for Heavy Traffic  
125' Wide • 432' Long



\$370.00/Roll  
**660-216-0938**

## PETS

PUPPIES: Farm Raised, Mother AKC Registered German Shepherd, Father Most Likely A Lab, Ready To Go September 3rd, \$50. Fayette, MO. 660-728-2187 9-15

FOR SALE: Apple Head Chihuahua, 4 Males Left, \$600. Will Meet, Will Be Very Small Dogs. 641-919-1471 9-1

FOR SALE: English Pointers, 8 Wks Old, Unreal Pedigree, NFTRA 57 Champions, Field Trail 15 HOF's, \$600. 573-228-1120 9-15

# CLASSIFIED COUPON

Use the Power of Your Traders for **Regional Classified Results!**

Clip this coupon to run a Classified Ad for **\$8.75** for one week.

1 Classified Ad for two weeks or 2 Classified Ads for one week for **\$17.00**.

Picture ads are not included with coupon, call for pricing.

Each ad must be 20 words or less. additional 20¢ per word over 20 words

### AD NO. 1: (20 Words Or Less)


### AD NO. 2: (20 Words Or Less)


## Triple Your Classified Ad's Power By Running It In The Traders The HAWKEYE TRADER, SHOW ME TRADER & MID-MO TRADER!

WHEN YOU SELECT ALL THREE TRADERS, YOUR AD WILL BE READ IN OVER 170 COUNTIES IN 5 STATES & ONLINE!

- HAWKEYE TRADER ONLY:** 1 Ad For One Week **\$8.75** (84 Counties)
- HAWKEYE TRADER ONLY:** 1 Ad For Two Weeks **\$17.00** Or 2 Ads For One Week **\$17.00** (84 Counties)
- BOTH HAWKEYE & SHOW ME TRADER:** 1 Ad For One Week **\$17.00** or 2 Ads For One Week **\$32.00** (150 Counties)
- BOTH HAWKEYE & MID MO TRADER:** 1 Ad For One Week **\$17.00** or 2 Ads For One Week **\$32.00** (106 Counties)
- BEST VALUE: HAWKEYE, SHOW ME & MID MO TRADER:** 1 Ad For One Week **\$25.00** (170 Counties)
- BEST VALUE: HAWKEYE, SHOW ME & MID MO TRADER:** 2 Ads For One Week **\$47.00** (170 Counties)

To Receive This Rate, Coupon Must Be Mailed In With your Payment  
Or Use Our Website @ [www.hawkeyetrader.com](http://www.hawkeyetrader.com) For More Savings Options

**HAWKEYE TRADER, P.O. Box 96**  
**Pulaski, IA 52584**



## Order Your Fish Today

NOW TAKING ORDERS FOR ALL COOL WATER SPECIES:

- WALLEYE
- YELLOW PERCH
- SMALLMOUTH BASS
- MUSKIE
- NORTHERN PIKE

Contact Us For Price & Delivery



www.harrisonfishery.com

  
Channel Catfish

  
Grass Carp

  
Bluegill • Hybrid

  
Redear

  
Fathead Minnow

  
Largemouth Bass

  
Black Crappie

  
Koi

  
Walleye

  
Yellow Perch

Where Quality Comes First

Are You Thinking About A Building? Bring Your Size And We'll Give You A FREE Price Quote!

**WE WILL ENGINEER YOUR TRUSSES TO YOUR SPECS**

**BUILDING PACKAGES (TAXES INCLUDED)**  
SERVING THE TRI-STATE AREA SINCE 1992

**Call For Pricing On Building Packages!**

- WE WILL DELIVER -  
FREE ESTIMATES ON ALL BUILDINGS  
WE MANUFACTURE STEEL ROOFING,  
SIDING AND TRIM, CUT TO THE INCH.

**BUILD IT YOURSELF OR HAVE ONE OF OUR PROFESSIONAL CONTRACTORS DO IT FOR YOU.**

**BUY DIRECT AND SAVE!**

4 MILES SE OF REVERE, MO  
OR 6 MILES NW OF WAYLAND ON C.  
26758 HWY C., ALEXANDRIA, MO 63430

WAGLER METALS

Missouri Warehouse

MON.-FRI. 7AM-5PM  
SAT. 7AM-2PM

## LAN-DOW BUILDINGS

"We Build to Suit Your Needs"

"Custom Built"

Pole Barns  
Garages  
Utility Buildings

"H" Don or Dick Middleton

**Memphis Lumber Co.**

**1-800-337-5858**

**Phone: 660-465-8595**

**Fax: 660-465-8596**

# Pulaski Corn Show

SATURDAY, SEPTEMBER 9TH

## Buck Wheaton Memorial TRACTOR PULL



Pull starts after parade (Approx. 12:30 - 1:00 PM) at the north end of the Pulaski Park. \$15 fee per class. Trophies for 1st and 2nd place in all classes.

Weight Classes:					Open Run What You Brung Class Weight Classes:				
3,500	4,000	4,500	5,000	5,500	5,500	6,500	7,500	8,500	9,500
6,000	6,500	7,000	7,500	8,000	10,500	11,500	12,500		
8,500	9,000	9,500	10,000	10,500	PICKUP:	6,500	7,500	8,500	
11,000	11,500	12,000	12,500						
10,500	11,500	Non-Turbo							



### Rules: We're going back to the basics:



- Two wheel drive tractors of any year can pull in Farm Class.
- Drawbar no higher than 20 inches in all weight classes.
- All tractors must have an area 6 inches wide and 12 inches high directly above drawbar free of obstructions.
- Wheelie bars are recommended, but if you don't have wheelie bars, we'll be using a magnet and chain.
- Most important rule of all, just have some fun!

For more information please call: Jerry Robison at 641-680-8054

# September

## IOWA FARMLAND AUCTION

464 ACRES M/L OFFERED IN 3 TRACTS | MADISON COUNTY, IA

FRIDAY, SEPTEMBER 15, 2023 | 10:00 AM

PATTERSON COMMUNITY CENTER | 150 8TH STREET | PATTERSON, IOWA 50218

Peoples Company is pleased to be representing The Lynch Family in the sale of 464 Acres M/L of high-quality farmland, pasture land, recreational land, and building sites all located in a high-demand area of Madison County, Iowa.

Tract 1: 160 Acres M/L | Tract 2: 184 Acres M/L | Tract 3: 120 Acres M/L

MIKE NELSON | 641.223.2300 | IA LIC B41670000

JARED CHAMBERS | 641.414.0234 | IA LIC S62597000



PeoplesCompany.com  
Listing #16968



### RECREATIONAL

FOR SALE: 2013 Salem Bumper Pull Camper, Super Slide, Self Leveling Jacks, Power Awning, Super Clean. Call. 660-833-5669 9-1

FOR SALE: 2002 Sportsman Camper Toy Hauler, New Tires, Gooseneck Or 5th Wheel, \$7,200 OBO. 641-680-0892 TFN

### AG RELATED

FOR SALE: 2 Bottom Plow With Scraper, In Good Condition; Rear 3 Pt. Adjustable Blade, \$450. 641-572-0061 9-1

FOR SALE: IH 1660 Combine, Field Ready, 3400 Hours, Both Heads. 515-669-0704 9-1

FOR SALE: MF 20 Ft. Flex Grain Table Off A MF 8780, Call. 319-931-2733 9-8

# ZIMMERMAN'S STORE

Main Street • Rutledge, MO • 660-883-5766

Penna. Large Size Loring & Baby Gold Peaches  
Penna. Nice Size Ginger Gold Apples.....\$33.75  
Fresh Bin of Watermelons & Cantaloupes  
Home Grown Red & Yellow Tomatoes.....98¢ Lb  
Home Grown Green, Red & Orange Peppers.....\$1.49 Lb  
Home Grown Cucumbers.....89¢ Lb  
Home Grown Sweet Corn.....\$3.98 Dozen  
Home Grown Red Beets.....\$1.29 Lb

15.5 Oz Chili Beans..... Only 79¢  
18 Oz Contadina Roma Tomato Paste..... Only \$2.19  
15 Oz Zimmermans Natural Peanut Butter, No Sugar,  
Low Sodium, Dated 7/4/23..... Reduced to \$4.19  
Mrs. Wages Mixes for Tomato Products & Cucumbers

Ball Mason, All Sizes, Also Cheaper Jars Without Lids  
Bulk Lids, Flats & Rings Available

Enoz Liquid Ant Killer, 6 Bait Stations.....\$3.79  
Fly, Gnat, Mosquito & Roach Sprays  
Mouse Traps, Rat & Mouse Glue Traps  
5 Pk Fly Catcher Ribbons..... \$1.95, Also Huge Fly Reel

20"x14" Mega Size Nonstick Cookie Sheet.....\$9.98  
4 1/2"x8 1/2" S.S. Loaf Pan.....\$12.25  
Homemade Quilts, Aprons, Sun Bonnets, Clothespin Bags

CARS - PARTS - CRAFTS - FLEA - VARIETY - CARS - PARTS - CRAFTS - FLEA - VARIETY

# GREENFIELD SWAP MEET

LOCATED AT THE ADAIR COUNTY FAIRGROUNDS IN  
GREENFIELD, IOWA

NORTH OF JUNCTION OF IOWA HIGHWAYS 25 AND 92  
900 EAST ELM STREET GREENFIELD, IOWA

## SEPTEMBER 8 - 10, 2023

Grounds Open for Shopping Friday & Saturday 8 AM - 5 PM ; Sunday 8 AM - ???

### VENDOR FEES

(2-1/2 DAYS)

Outdoor Spaces - \$30.00 (Limit - None)

Indoor Space - \$20.00

(Floor Space only - No equipment)

**NO SETUPS BEFORE FRIDAY**

Gate opens Friday a.m. as soon as vendors  
in line are checked in

### FOOD AND DRINK

AVAILABLE ON GROUNDS

Greenfield Swap Meet maintains all food and drink  
vending rights

For Reservations / Information call 641-221-0670

Pre-registered Vendors unable to attend may reserve for 2024 by calling  
before 4:00 p.m. on Saturday September 9, 2023. Phone 641-221-0670

GO TO GREENFIELD SWAP MEET ON FACEBOOK FOR MORE INFORMATION.

**NO ALCOHOLIC BEVERAGES ALLOWED --- NOT RESPONSIBLE FOR ACCIDENTS, FIRE, OR THEFT**  
**ALL HANDICAPPED VEHICLES ON GROUNDS MUST BE SMALLER THAN 70" X 120"**

More Space - Adequate Parking - Vehicles must be parked on rented vendor spaces or in public parking -  
Free camping in parking area (no hookups) - Airport Nearby - Indoor Variety Market (Non-Car Related Items) -  
Pets must be on a leash (8 foot or less) & shots up to date (proof available)

**NO REFUNDS / NO FIREARMS**



# LARGE 2-DAY ANTIQUE AUCTION

AUCTIONS TO BE HELD AT THE CHILLICOTHE ELKS LODGE:  
401 HARVESTER RD, CHILLICOTHE, MO 64601  
**SAT., SEPTEMBER 16<sup>TH</sup> & SAT., SEPTEMBER 23<sup>RD</sup>**

Mark your calendars and make plans now to attend these 2 huge auctions being held for Windy Hill Antiques (Dr. Clark & Sandy Gwin). These "no-reserve" auctions will include 225+ crocks, churns, bowls, stoneware, antique furniture, primitives & country collectibles, vintage signs, advertising, prints, glassware and much more! These are positively auctions you will not want to miss! Be prepared to "spend the day". Lunch will be available - No early lookers.

**WINDY HILL ANTIQUES, SELLER**  
**MORE DETAILS AT WWW.TETERAUCTION.COM**

Teter Auction Company, LLC • (660) 240-9161 • www.TeterAuction.com

**FOR SALE:** JD-8820 Combines 1982 2WD; 1983 4WD 643 Corn Header; 922 Grain Head; 922 For Parts. Unverferth And Woodworth Wagons.  
573-619-2043 9-8

**FOR SALE:** Tall Corn Ends For IHC 3200 And 3400 Series Corn Head. Ask For Mark.  
712-830-1197 9-1

**FOR SALE:** JD 693 Cornhead, Poly Hydraulic Deck Plates, Single Point; Kuhn 10 Wheel Rake; 8 Hay Bale Trailer.  
641-990-2432 9-1

**FOR SALE:** NH 1 Row 818 Silage Cutter, Nice, \$950; JD 1 Row PTO Corn Binder With Carrier, Nice, \$950; 2 - 6x12 Deep Flare Wagons, PTO Run Apron Floor, \$1,150 Each; 6 Or 7 X 12 Heider Or Stand Hoist Hyd. Wagons; Midwest 5, 7 Or 10 Ton Hoists. Pomeroy, IA. No Text.  
712-299-6608 9-8

**FOR SALE:** Certified Organic Yellow Corn, Oat Hay And Alfalfa Grass Hay.  
641-751-8382 TFN

## FARMLAND AUCTION

200 ACRES M/L IN ADAMS & TAYLOR COUNTY

**THURSDAY, SEPTEMBER 21ST, 2023 | 10:00 AM**  
Corning Community Center | 601 6th Street | Corning, Iowa 50841

**Offered in 3 Tracts**

**Tract 1 (Adams County):** 40 acres m/l with 36.97 FSA tillable acres m/l, CSR2 of 82.8.

**Tract 2 (Adams County):** 40 acres m/l with 30.9 FSA tillable acres m/l, CSR2 of 70.5.

**Tract 3 (Taylor County):** 120 acres m/l with 114.14 FSA tillable acres m/l, CSR2 of 55.8 CSR2.

Adam Curran | 641.203.2931  
Adam@PeoplesCompany.com | IA LIC S56876000

Andrew Zellmer | 712.898.5913  
AndrewZ@PeoplesCompany.com | IA LIC S61625000

PEOPLES COMPANY  
INTEGRATED LAND SOLUTIONS  
PeoplesCompany.com  
Listing #16692

**FOR SALE:** JD 725 FM Cultivator, 6R 30, Great Condition, Shedded For 30 Years, New Hoses, All Components, \$2,900. Bloomfield, IA.  
641-664-1200 9-1

**FOR SALE:** OCIA Certified Organic Yellow Corn, Alfalfa/Grass Hay, Oat/Hay, 1969 JD 55 Combine With 2 Row Cornhead In Excellent Condition, Always Inside.  
641-751-8382 TFN

**FOR SALE:** New 3 Pt. Tillers, Heavy Duty, Gear Driven, 7 Ft. To 12 Ft. Starting At, \$4,150.  
660-874-4455 12-21-23

**FOR SALE:** M-M Motor Parts G-1000 UP-G Parts Tractor 5 Star U Standard, Come Look Have More.  
660-341-6318 ETFN

**FOR SALE:** Bushog 2715 15 Ft. Batwing, \$8,500. M&W Batwing, \$6,500. Sidewinder Batwing, \$2,500. John Deere 216 16" Flex Head, \$600. Shelbyville, MO.  
573-470-3358 9-1

**2020 Equinox LT**  
Leather Interior,  
Sunroof,  
66K Miles  
**\$19,500**

Call Hornick Auto  
641-676-3304

**\$250 OBO**

**\$50 OBO**

**65" Vizio TV**  
Great Picture, Too Large For Corner Of Room

**32" Symphonic TV**  
Take Both \$275

**641-980-0828**



SMART HEAT FOR FARM AND AG BUSINESSES

# IGNITE TECH™

A HVC COMPANY

## HD80 INDOOR COMMERCIAL WOOD FURNACE

Factory Rep:  
Dennis Mix / Mix Farms  
816-449-5887  
woodfurnace@yahoo.com

MADE IN THE USA  
100% RECYCLED STEEL

www.ignitefurnace.com

# SCAG POWER EQUIPMENT

Get the Mower of Your Dreams.

**0% for 48 months**

A variety of great financing plans are available to help you get the mower of your dreams, with payments that won't give you nightmares.

Program not available in all areas, and is subject to change or end at any time without obligation. New equipment only. All loans subject to approval. Fees may apply. Available to qualified buyers with rates dependent on credit records and credit score. Not all customers will qualify for the above listed program. Higher rates may apply for buyers with marginal credit.

Stop by today to learn more! [www.Scag.com](http://www.Scag.com)

USED SCAG ZERO TURNS	PRICE	USED ZERO TURNS	PRICE
'22 STHH-61V-31BV	388 HRS \$12,500	'18 EXMARK LZ940EK606WO 60"	1162 HRS \$7,200
'21 STHH-52V-31BV	513 HRS \$11,500	'18 JD Z915E 54"	694 HRS \$5,500
'21 STHH-52V-31BV	507 HRS \$11,000	'04 KUBOTA ZD-28F 72", DIESEL 28HP	1029.5 HRS \$5,500
'20 SCZH-72V-37BV	76 HRS \$11,500	'12 FERRIS IS3100Z MODEL 5901186 60"	775 HRS \$5,500
'21 SCZH-61V-38FX	45 HRS \$10,500	'21 CUB CABET ULTIMA 212 54"	12.6 HRS \$4,000
'19 STHH-52V-26CH-EFI	545 HRS \$9,750	'13 TORO Z MASTER 3000 60"	1984 HRS \$3,500
'21 SCZH-72V-37BV-EFI	770 HRS \$9,500	'05 EXMARK LZ25KC604AS 60"	1320 HRS \$3,000
'21 STCH-48V-22FX	34 HRS \$9,500	'10 TORO Z MASTER PRO 5000 74915 60"	1716 HRS \$2,500
'21 SCZH-61V-38FX-EFI	606 HRS \$9,500		
'20 SCZH-72V-37BV-EFI	957 HRS \$9,500	<b>USED STAND ON</b>	<b>PRICE</b>
'18 STHH-52V-26CH-EFI	490 HRS \$9,500	'18 SVRH-52V-25CV-EFI	588 HRS \$6,700
'20 SCZH-72V-37BV	867 HRS \$9,000	'18 SVRH-52V-25CV-EFI	700 HRS \$6,500
'15 SCZ61RD-31FX	269 HRS \$9,000	'22 WRIGHT WSZK72561E8E-49S 72"	694 HRS \$6,000
'21 STCH-52V-26FT-EFI	183 HRS \$8,500	'22 GRAVELY PROSTANCE 52 MODEL 994152	260 HRS \$6,000
'16 STHH-61V-26DFI	1001 HRS \$8,000	'12 WRIGHT WSTX52FX730E 52"	461 HRS \$5,500
'15 STCS2V-22FX	260 HRS \$7,500	'21 WRIGHT WSZK61S61E8E-49S 61"	1337 HRS \$4,500
'19 STHH-61V-31DFI	1786 HRS \$7,500	'17 FERRIS SRS 22 52"	792 HRS \$5,000
'17 STHH-61V-26CH-EFI	1111 HRS \$7,000	'22 SWZT48H-15FSE	19.5 HRS \$4,750
'15 SCZ72V-34CV-EFI	587 HRS \$6,000	'19 SVRH-52V-23FX	1144 HRS \$4,500
'14 SCZ61V-34CV-EFI	\$5,000	'17 WRIGHT WSTN48SF730E 48"	1014 HRS \$4,000
'11 ST161V-27CH	\$4,500	'18 SVRH-52V-25CH-EFI	2237 HRS \$3,500
'19 SZL52-23FR	\$3,500	'20 WRIGHT WSZK72561E8E-49S 72"	1848 HRS \$3,500
'14 STC61V-26CV-EFI	\$3,500		

Other Used Brands Of Zero Turns Available!

12372 Hwy 163 West - Prairie City, IA 50228  
515-994-3200 • 800-994-3202  
www.prairiecitysupply.com

**JAMESPORT BUILDERS**  
**660-684-6931**  
**POST FRAME BUILDINGS**



**Free Estimates**

**Machine Sheds • Horse Barns • Garages**  
**WE ALSO DO METAL ROOFS, SPRAY FOAM INSULATION (OPEN & CLOSED CELL) & CELLULOSE INSULATION**  
 We Have: House Plans, Dirt Work & Concrete Available  
**Hours: Mon-Fri 8 AM - 5 PM • Sat By Appointment Only**  
**32137 State Hwy 6 • Jamesport, MO 64648**  
**\*Serving Southern Iowa\***



**FOR SALE:** 24 Ft x 5 Ft Free-Standing Cattle Panels, Weighing 600 Lbs Each, Fastener Chains Included. Located in Troy, IA.  
 641-680-0892 TFN

**FOR SALE:** 1977 Chevy Nova, 2 Door, All Original, V8 Auto, P/S, P/B, A/C, Needs Restored, Runs & Drives, \$4,000 OBO, Troy, IA.  
 636-462-2221 9-1

**AUTOMOTIVE**  
**WANTED TO BUY:** 1969-1972 GMC 3/4 Ton, 4x4, Long Bed. No Project Vehicles. Looking For A Good Clean Driving Truck.  
 573-544-3783 9-1

**LIVESTOCK**  
**BULLS FOR LEASE:** Over 70 Registered Angus & Hereford To Choose From. 90 Day Lease, \$900. Trucking Available At Extra Charge. Kingdom City, MO.  
 573-999-3197 TFN

**New Harleys**

**4.99% For 60 Months**  
**And \$0 Down With**  
**Qualified Credit!**  
**Call Us Before You Buy!**  
**NO DOC FEES!**

**C&C Cycle**  
**Chariton, IA • 888-475-2243**

**www.cc-cycle.com**



**GOVERNMENT EQUIPMENT AUCTION**

**650+ ITEMS SELL NO RESERVE!**  
**TUESDAY, SEPTEMBER 12**



**IQ9805 '05 GMC C5500**  
 utility / service truck



**MG9679 '08 John Deere 410J**  
 backhoe



**NA9083 '07 John Deere 444J**  
 high lift wheel loader



**IQ9825 '18 Bobcat 3650**  
 utility vehicle



**NT9952 '14 New Holland**  
 TS6.140 MFWD tractor



**INVENTORY INCLUDES:** high lift wheel loaders, motor graders, crane, backhoes, equipment trailers, dump trucks, service trucks, tractors, pumper fire trucks, mini excavator, wheeled excavator and more. *All items are sold "AS IS." 10% buyers premium applies. 866.608.9283*

**BID NOW! purplewave.com**

**WANT TO BUY YOUR FARM EQUIPMENT**



**Kinze Planters - Model 2500, 2600, 2000, 3000, 3500, 3505, 3600, 3650, 3660, ETC, Box planters or bulk**  
**John Deere Planters - 7200, 1760, 1770 NT, 1790NT, 1780, 1765**  
**John Deere Air Seeders - 1890, 1990**  
**Case IH Planters - 1200, 1240, 1245, 2150**  
**Great Plains Drills - SS14, SS15, 1500, SS24, SS30, etc.**  
**Seed Tenders of all makes**  
**Tractors - John Deere, Case, Agco, Massey, Later Models preferred 90s and newer, any HP**  
**Construction - Backhoes, Skidsteers, Dozers, Excavators**  
**Above listings are for reference. Interested in one piece or the whole line of machinery. Give us a call and let us know what you have.**

**Office: 660-663-3363**  
**Shay: 660-605-0839 Justin: 660-605-2346**

**BandSequipmentsales.com**  
**GALLATIN | MISSOURI**

## BARN RESTORATION

Specializing in Barn & Pole Barn  
Repair and Restoration



See more restorations!



**WAGLER BUILDERS**  
(641) 777-5000 • john@waglerbuilders.com @waglerbuilders



**2002 Night Train**  
17K Miles,  
Lots & Lots of Extras,  
Must See!

**NO DOC FEES!** **\$7,995**

**C&C Cycle**  
Chariton, IA • 888-475-2243  
www.cc-cycle.com

[www.hawkeyetrader.com](http://www.hawkeyetrader.com)

## WE BUY FARMS

- ✓ Any Condition.
- ✓ Quick Decision.
- ✓ Quick Closing.

**Honey Creek Farms, LC.**  
Contact:  
Steve: 515-208-1149 | steve2251@hotmail.com  
Dave: 515-991-0308

# LABOR DAY



Bring Your Plans In For **FREE ESTIMATE**

Full Line Of Building Materials



**COMMERCIAL - AGRICULTURAL RESIDENTIAL**

17893 212<sup>th</sup> Street • Bloomfield, IA 52537  
641-722-3605 • Mon. - Fri. 7 AM - 5 PM

## SOUTHEAST IOWA STEPS



**More Sizes Available**

**For Sales & Service Please Call Chris At 641-919-6922**

**Check Us Out On Facebook**

**Steps • Stock & Custom Railings**

### MISC

**HUGE TRUCKLOAD:**  
Mattress Sale!!! Call To See When They Arrive!

**Bargain Warehouse**  
Memphis, MO  
660-465-2591 9-1

## REAL ESTATE AUCTION

**Featuring Home and 5 Acres in Page County, Iowa**  
**Tuesday, September 19, 2023 • 5:14 pm**

**Auction On Site: 3033 G Avenue, Northboro, IA 51647**

Directions: From Northboro East on 300th Ave 1 mi., then South 1-1/2 mi. on G Avenue, OR Blacktop J64 to F Avenue 1 mi. North, then East on 300th Ave. Watch for signs.



Nice 1-1/2 story 2-bedroom home built in 1958 situated in a beautiful 5-acre country setting. Home features living room, dining room, and nice updated kitchen with knotty pine cabinets and stainless-steel double sink. Hardwood floors throughout. Full bath w/shower and tub combination, laundry room on main level with washer and dryer hookup. Home has vinyl siding with steel roof and basement block foundation. Nice front porch with handicap accessible ramp. New heating and cooling in 2014; propane heat and electric water heater. Septic tank. 200-amp breaker system.

**Water:** Rural and well water combination for livestock or gardening purposes

**School District:** Shenandoah Community School District **Taxes:** \$1680 per year

**Other Amenities Include:** 10'x30' Open front livestock shed with divided pens for equine or bovine; frost-free water system for livestock; 2 - carports in good condition; 24'x34' combination garage/shed with 2 overhead doors, plumbed with electricity; 8'x16' metal storage building on runners with roof damage, fairly new.

**Auctioneer's Note:** If looking for a wonderful starter home or weekend getaway, set up for horses, or small livestock, close to Shenandoah and Clarinda, don't miss this opportunity. For viewing of property, contact auction company at 660-541-1977. Make financial arrangements now, for this property may sell in your price range. The Whipples have moved to Clarinda and are very sincere in selling.

**James and Debrah Whipple, Owners**

**Terms:** \$10,000.00 down payment of good faith, non-refundable money to be made on day of sale entering into purchase agreement guaranteeing clear title. Balance is due at closing on or before 30 days, when full possession will be given. Escrow to be held at the office of Turner, Jones & Biting, Attorneys, Clarinda, IA. Property is being sold as is, where is. Statements made at time of auction take precedence over any advertising in print or online, printed documents, or previous statements. YAC, Inc. d.b.a. Younger Auction Company and its representatives are acting as exclusive agents of the sellers.

**Mark Younger, Auctioneer** For complete listings and pictures visit our website  
**660-541-1977**  
Email: yac@youngerauction.com **WWW.YOUNGERAUCTION.COM**



## Rafter C AUCTION

**Monday, September 11, 2023**  
**\*ONLINE NO RESERVE AUCTION\***  
Starts Closing at 7 PM



**JOHN DEERE 9610 COMBINE**



**JOHN DEERE SILAGE WAGON**



**FORD 4000 TRACTOR**



**JOHN DEERE SILAGE CHOPPER**

MORE ITEMS BEING LISTED DAILY.  
Check Out our Website for more Listings  
[www.rafterconline.bidwrangler.com](http://www.rafterconline.bidwrangler.com)  
**660-646-1957**  
**And Remember Rain or Shine bid Online!**

**FOR SALE:** 1 Or 2 Horse Parade Wagon, \$375, \$575; Steel, Rubber, Or High Wheel Wagons With Boxes; 50 Ft. Elevator, 20 Inch Wide, For Hay, Grain, Or Wood, Etc \$475; Lots Of Old Machinery For Farm Use, Parades, Decoration. They Don't Make It Anymore. People Are Cutting It Up And There Will Be No More! Pomeroy, IA. No Text. 712-299-6608 9-8

**DAVE'S:** Mobile House Washing And Pressure Wash, Decks, Patios And Driveways. Removing Dirt, Mold And Algae. 319-371-5222 9-9

**WE HAVE PLUMBING PARTS:** Hydrants, PVC, Pex, Poly, Toilets, Faucets And Much More. Contractor Discounts. Gingerich Stoves LLC, Drakesville, IA. 641-722-3540 9-1

### TINY HOMES

Missouri Franchise  
**573-881-7965**



**DEWDUSTCONTROL.COM**

**DUST IS NOT JUST AIRBORNE DIRT... IT CARRIES:**

**VIRUS'S, PATHOGENS & BACTERIA!!!**

- Allergies From Dust
- Asthma Irritation
- Eye Irritations
- Endotoxins Exposure
- Dust Entering Your Home & Vehicles
- Coughing & Wheezing Caused By Breathing Dust



**DUST CONTROL  
MAKES COUNTRY  
LIVING CLEANER  
& HEALTHIER!**

**660-956-3890**



**AS YOU AGE,**

**THINK**

**BEFORE**

**YOU DRINK**

[yourlifeiowa.org](http://yourlifeiowa.org)



## 2 Speed Way Motorcycle Shelters



**1 Large (Tourer)  
1 Standard Size  
Retractable  
"Roll Top" Shelters**  
**Choice \$275 Or  
\$400 For Both**

**641-980-0828**



**2018  
Polaris  
Sportsman  
450  
4x4,  
389 Miles**

**NO DOC  
FEES!**

**\$5,299**

**C&C Cycle  
Chariton, IA • 888-475-2243  
www.cc-cycle.com**

**SCOTT HUSKEY'S FREE HEAT & HOT INSULATED SKIRTING WATER: Eliminate Monthly SYSTEMS: Keeps Your Heating Bills w/Classic Home Cooler In The Outdoor Wood Furnace. No Summer - Warmer In The Sunday Calls. Winter - Saves On Utilities 660-707-3866 TFN And Looks Great! Since 1972. 573-696-3468 TFN**

### PETS

**EARBUDS: Wireless \$59 A Set.**

**Bargain Warehouse  
Memphis, MO  
660-465-2591**

9-1

**PUPPIES: Farm Raised, Mother AKC Registered German Shepherd, Father Most Likely A Lab, Ready To Go September 3rd, \$50. Fayette, MO. 660-728-2187 9-15**



## REAL ESTATE AUCTION

**Featuring Split-Level Home in Maryville  
Auction On Site at 705 E. South Avenue, Maryville, MO  
Thursday, September 14, 2023 - 5:30 pm**

Split-Level Home features top level with open living/dining/kitchen combo, 3 bedrooms, full-size bath with handicap shower and hall closet space. Walkout deck from kitchen. Kitchen includes wooden cabinetry, Amana refrigerator, Frigidaire electric range/oven, Bosch built-in dishwasher (2010) and 2-compartment stainless steel sink with garbage disposal. Electric baseboard heat; window air conditioner; carpet throughout main floor with linoleum in kitchen and thermal pane windows. Ground level features eat-in kitchen, large living room/open bedroom combination, full bath with tub/shower combo. New electric water heater. One car garage.

**SHED: Amish made 2-door entry metal shed with overhead storage; approx. 15'x12'. Shed to be sold separately after real estate.**



**Betty Marie Palmer, Owner**

**TERMS: \$10,000.00 payment of good faith, non-refundable money to be made on day of sale entering into purchase agreement guaranteeing clear title. Balance is due at closing on or before 30 days, when full possession will be given. Escrow to be held at the office of Nodaway Abstract, Maryville, MO. Property is being sold as is, where is. Statements made at time of auction take precedence over any advertising in print or online, printed documents, or previous statements. YAC, INC d.b.a. Younger Auction Company and its representatives are acting as exclusive agents of the sellers.**



**Mark Younger, Auctioneer For complete listings and pictures visit our website  
660-541-1977 WWW.YOUNGERAUCTION.COM  
Email: yac@youngerauction.com**

# RED HOT DEALS

[www.hawkeyetrader.com](http://www.hawkeyetrader.com)

### Multiton EME30 Electric Pallet Truck

30" Forks, Works Well in Tight Places Like Cargo Trailers & Truck Boxes, Needs Battery

**\$1,000 080**

**641-980-0828**

### 2010 Street Glide

Rare 2 Tone Paint, Vance & Hines Ext, 37K, Runs Great!

**NO DOC FEES!**

**\$11,995**

**C&C Cycle  
Chariton, IA • 888-475-2243  
www.cc-cycle.com**

## HIGH END MILITARY GUNS ESTATE AUCTION ★ 250+ LOTS

**Featuring Amazing Collection of Japanese Rifles, US Military, Marlin Lever Actions, Winchesters, Smith & Wesson Pistols, Colt 41 cal. and 357, Bayonets, Japanese Regimental Flags, Ammo, Brass, Reloading Dies and Supplies**

**September 16 & 17 - Sat. 10 am/Sun. 10:30 am**  
Younger Auction Gallery, 312 E. South Hills Dr., Maryville, MO

**Online Bidding Available**

**Mark Younger, Auctioneer For complete listings and pictures visit our website  
660-541-1977 WWW.YOUNGERAUCTION.COM  
Email: yac@youngerauction.com**

**ONLINE ONLY AUCTION**

**MCCLLENATHAN FAMILY RETIREMENT, ANTIQUE AND COLLECTIBLES AUCTION**  
OVER 300 LOTS OF DIE CAST TOYS, SLEDS, AND COLLECTIBLES!

**AUCTION CLOSSES SEPTEMBER 7TH**  
LOTS START CLOSING AT 6PM - SOFT CLOSE ON ALL LOTS

**VIEWING / INSPECTION DAY**  
SEPTEMBER 5TH AND 6TH FROM 9AM - 7PM

**PICKUP DATES**  
SEPTEMBER 9TH AND 10TH FROM 9AM - 6PM

**INSPECTION AND PICKUP LOCATION**  
2312 370th AVE VICTOR IOWA

**TO VIEW LOTS AND BID ON ITEMS GO TO  
WWW.IVERSONAUCTIONS.COM**

**CALL RYAN WITH ANY QUESTIONS 641-325-1174**

**Want to Buy Walnut**

SERVING ALL OF IOWA

**HINDMAN LOGGING**

**641-485-9071**

**Bonded & Insured**

Timber Paid in Full Before Cutting

Cutting on Shares Also Available

FOR SALE: Apple Head Chihuahua, 4 Males Left, \$600. Will Meet, Will Be Very Small Dogs. 641-919-1471 9-1

FOR SALE: English Pointers, 8 Wks Old, Unreal Pedigree, NFTRA 57 Champions, Field Trail 15 HOF's, \$600. 573-228-1120 9-15

**RECREATIONAL**

FOR SALE: 2013 Salem Bumper Pull Camper, Super Slide, Self Leveling Jacks, Power Awning, Super Clean. Call. 660-833-5669 9-1

FOR SALE: 2002 Sportsman Camper Toy Hauler, New Tires, Gooseneck Or 5th Wheel, \$7,200 OBO. 641-680-0892 TFN

**AG RELATED**

FOR SALE: 2 Bottom Plow With Scraper, In Good Condition; Rear 3 Pt. Adjustable Blade, \$450. 641-572-0061 9-1

**Mike Sullivan LAND SALES LLC**  
REAL ESTATE AUCTIONS SINCE 1979

**HANCOCK COUNTY, IL LAND AUCTION**



**SATURDAY, SEPT 16, 2023 AT 1:00 PM**  
Auction to be held at the Knights of Columbus Hall, Nauvoo, IL. This will be an in-person auction with live on-line bidding available through Proxibid with no Buyer's Premium.

**SELLING 28 ACRES** located 1 mile south of Niota, IL. Tract 1 consists of 26 acres of rolling hardwood timber with excellent hunting, beautiful potential new home building sites and possible harvestable trees. Prospective buyers have permission to walk over and inspect this property. Tract 2 will be approximately 2 acres, (adjoining Tract 1) with a 3-bedroom home which is needing major repairs. Contact auctioneer for viewing.  
More information in next week's paper or go to [www.MikeSullivanLandSales.com](http://www.MikeSullivanLandSales.com)

**ELI & JUANITA SHANKS ESTATES**  
Mike Sullivan Land Sales LLC  
414 Main • PO Box 68 • Carthage, IL 62321  
217-357-5252 • [www.mikesullivanlandsales.com](http://www.mikesullivanlandsales.com)

**Post & Pole Frame Buildings**

**Horizon BUILDINGS**

Specializing in:  
Post Frame Buildings  
(Up to 100' Wide Clear Span)  
Agricultural • Commercial  
Residential • Equine  
Heat Formed Metal Roofing & Siding  
**With 50 Year Warranty**

Quality Workmanship  
Best Quality Material



**Everlast Roofing, Inc.**  
2 Miles N. of Drakesville on pavement  
888-371-4710 • 641-722-3505  
17549 Husky Trail, Drakesville, IA 52552



**KARS, INC ON EUCLID**

[www.karsincdsm.com](http://www.karsincdsm.com) Ask for DeMarcus

2000 E. Euclid • Des Moines, IA  
**515-265-0215**

<p><b>Low Miles</b></p>  <p><b>2016 Dodge Challenger R/T Shaker</b> 5.7 Hemi, Full Powe, Hurst Pistol Grip Shifter, Only 28K, <b>\$22,995</b></p>	 <p><b>2013 Chevy Malibu LTZ</b> Loaded, Full Power, Heated Leather, Sunroof, 117K, <b>\$10,995</b></p>	 <p><b>2011 Silverado K1500 LT</b> Ext Cab, 4x4, 5.3 V8, Auto, Full Power, Bed Cover, CD/MP3, 132K, <b>\$15,995</b></p>	 <p><b>2016 Nissan Altima 2.5</b> 4 Cyl, Auto, Full Power, CD/MP3, 106K, <b>\$12,995</b></p>	 <p><b>2011 Ram 1500 Sport, 4x4, Cre Cab,</b> 5.7 Hemi, Auto, Full Power, Leather, Hard Disc Drive Media Storage, 141K, <b>\$16,995</b></p>
 <p><b>2013 Honda CR-V EXL</b> 4WD, Full Powr, Heated Leather, CD/MP3, Sunroof, 144K, <b>\$12,995</b></p>	<p><b>Low Miles</b></p>  <p><b>2016 Silverado K2500HD</b> 4x4, 6.0 V8, Auto, Cruise, Tilt, Air, Blade Hookup, 82K, <b>\$28,995</b></p>	 <p><b>2013 Chevy Silverado K1500 LTZ</b> Crew Cab, 4x4, 5.3 V8, Loaded, Heated Leather, Full Power, Bed Cover, 115K, <b>\$21,995</b></p>	 <p><b>2014 Buick Encore</b> Leather, AWD, Full Power, Heated Frt Seats, 114K, <b>\$11,995</b></p>	 <p><b>2015 Chevy Traverse LT, AWD, 6 Cyl, Auto,</b> Loaded, Leather, Full Power, Sunroof, 3rd Row Seating, 121K, <b>\$12,995</b></p>
 <p><b>2005 Hummer H2 SUT</b> 6L V8, Loaded, Leather, Sunroof, Full Power, 157K, <b>\$16,995</b></p>	 <p><b>2007 Buick Rendezvous CX</b> V6, Loaded, Leather, 3rd Row Seating, Low Miles, 83K, <b>\$6,995</b></p>	 <p><b>2013 Ford Escape SE</b> Nicely Equipped, CD/MP3/Satellite, 154K, <b>\$7,995</b></p>	 <p><b>2004 Lexus GX470</b> 4WD, Loaded, Sunroof, Full Power, 3rd Row Seating, 181K, <b>\$9,950</b></p>	 <p><b>2017 Ford Festiva SE</b> Well Equipped, Backup Camera, CD/MP3, 71K, <b>\$9,995</b></p>

**Waterbeck Spray Foam LLC**  
**General Contractor**  
 Insulate: Houses, Foundations,  
 Roofs, Machine Sheds  
 Assorted Buildings

**FREE ESTIMATES**

1353 280th Street  
 Garwin, IA 50632

Office 641-499-2569  
 Cell 641-751-0626

Email: garwinacres2012@hotmail.com

Member NAHB

**2019 Case IH Maxxum 150**  
 MFD,  
 Loader,  
 One Owner,  
 Local Trade,  
 3625 Hours  
 JUST IN

**Call for Price**

**Vetter Equipment Company**  
 2503 Hwy 2 • Corydon, IA • 641-872-2000  
 For All Your Equipment Needs • www.Vetterequip.com

©2007 CNH America LLC. All rights reserved. Case IH is a registered trademark of CNH America LLC.  
 CNH Capital is a trademark of CNH America LLC.  
 www.caseih.com

**CASE IH**  
 AGRICULTURE

**POST FRAME BUILDINGS**

• Best Quality  
 • Great Prices  
 • Great Service

www.lancasterlumber.com  
**LANCASTER LUMBER, INC**  
 800-424-5071 • LANCASTER, MO



391± ACRES • 7 TRACTS (Subject to Survey)  
 Ranch style home located in Perry, MO - TRACT 8

**RALLS & MONROE COUNTY, MISSOURI**  
**LAND AUCTION**

**THURSDAY, SEPTEMBER 28 @ 10:00 AM CST**

**VIRTUAL ONLINE**

*Open HOUSE*  
 FRIDAY, SEPTEMBER 15 | 3:30 - 5:00 PM  
 304 S. MADISON ST. | PERRY, MO

Tracts 1-4 are located approximately 6 miles southwest of Perry, MO on blacktop Hwy D in Section 13, T53N•R8W South Fork Township, Monroe County, MO.

Tracts 5-7 are located approximately 3 miles north of Perry, MO on Hwy. J in Section 9, T54N•R7W in Salt River Township, Ralls County, MO.

Tract 8 is located at 304 S. Madison St., Perry MO. From E Main St in Perry, MO, turn south onto Madison St, home is located 3 blocks ahead on the west side of the street.

Don't miss the "live" Sharon Utterback Trust Auction selling vintage & antique items on Saturday, September 16 @ 9:00 A.M.  
 More information go to: [www.websterauctioneers.com](http://www.websterauctioneers.com)

**SHARON UTTERBACK REVOCABLE TRUST & SHARON F. UTTERBACK ESTATE**

REPRESENTING ATTORNEY: Mark S. Wasinger | Wasinger Parham, L.C.  
 2801 St. Marys | Hannibal, MO 63401 | (573) 221-3225

TITLE WORK BY: Accurate Land Title Co.  
 218 Broadway | Hannibal, MO 63401 | (573) 221-1002

AUCTION REPS: Jim Huff (319) 931-9292 | John Probasco (641) 856-7355

**MERIT AUCTIONS**

"Specializing in Farm Real Estate & Ag Equipment"

833.273.9300 | [www.MeritAuctions.com](http://www.MeritAuctions.com) | 444.000611

**SEPTEMBER**

**Online Only Equipment Auction**

WEDNESDAY, SEPTEMBER 13TH, 2023

Online Bidding Powered by AuctionTime.com

**SELLERS: Janice & The Late Bob Golick**

2002 John Deere 6420			
1964 Allis Chalmers D17 Series IV			

**AUCTIONEER'S NOTE:** As Janice is selling her rural home, she has decided to sell the remainder of her well cared for farm equipment. This auction will be conducted online only through AuctionTime.com.

**EQUIPMENT INSPECTION:** Inspection of any lot prior to the auction is welcome and encouraged. The equipment can be inspected by appointment at our auction lot located at 24256 Highway 5, Centerville, IA 52544.



**Terms & Conditions:** Weaver Auction Company, LLC and the seller assume no liability for errors or omissions in this auction listing. All items are sold As Is, Where Is, without warranty whatsoever, whether expressed or implied. Hour meter readings or mileages represented are unverified information and accuracy is not expressly guaranteed in any way by Weaver Auction Company, LLC or the seller. Any information is gathered from sources believed to be reliable but is not guaranteed to be accurate. Bidders are solely responsible for personally inspecting items and verifying any information presented here or elsewhere prior to bidding. Item descriptions and listings are subject to change, correction, update, or cancellation at any time, without notice. Bidders must register with AuctionTime.com prior to the close of the auction. All purchases must be paid for within 48 hours of the close of the auction by guaranteed check or wire transfer. Any purchases \$1,500 or higher MUST be paid for by WIRE TRANSFER. Weaver Auction Company, LLC and the seller are not responsible for theft, accidents, or inadvertent errors in advertising. All sales are final. All items must be removed within one week of the close of the auction unless prior arrangements have been made with the auction company. Any items not removed within one week of the close of the auction are subject to a storage fee of \$25/day.

TYLER WEAVER, OWNER/AUCTIONEER  
 660-216-9735 | Centerville, IA | [weaverauctioncompany.com](http://weaverauctioncompany.com)



**2017 H & H**



16 Ft. Trailer  
 With 2 Ft. Dovetail,  
 7000 lb Axles,  
 Like New Tires,  
 6 Ft. 10 Inch Wide  
 Reason For Selling  
 Is I just Never Use It

Asking  
**\$5,000**



**660-605-2437**



**2016 CVO Street Glide**  
 FBI 12" Handle Bars,  
 Rhinehart Full  
 Exh & Pipes  
 Regularly \$29,995

**NO DOC FEES!**

**SALE \$27,995**

**C&C Cycle**  
 Chariton, IA • 888-475-2243  
[www.cc-cycle.com](http://www.cc-cycle.com)

# SEPTEMBER

## Home at Auction



*Auction*  
"We sell it the day you need it sold!"

**Saturday, Sept. 16th, 2023**  
**Personal Property - 11:00 am**  
**Real Estate to sell at 1:00 pm**  
**103 3rd Ave. Jamaica, Iowa**

**General Description:**

Offering at auction this single level ranch home located on a large corner lot. This home has three bedrooms and a large bathroom. There is a detached garage plus a 4 car detached garage! The lot boasts plenty of mature bushes and shade trees and two smaller storage sheds. A great home that is move in ready. Be sure to call Mike to schedule your viewing today!

Sq. ftg. : 1008 sq ft  
Lot size: Regular Lot .49 acres m/l or 150 x 142  
School District: Panorama CSD  
Net Taxes: \$948.00

**Terms:** Cash, 10% down payment day of auction with balance due on or about October 16, 2023. Property sold in AS-IS condition with NO contingencies.



**Call Mike Bobst today for your appointment to view!**  
**515-468-7674**

## Daugherty Auction and Real Estate Services, LLC.

**Chad Daugherty - Owner/Auctioneer**  
103 N 9th St. Suite A Adel, Iowa (515) 993-4159  
**Mike Bobst, North River Realty 515-468-7674**  
**Jacob Hughes, Closing Attorney**  
Email- [d\\_auction@hotmail.com](mailto:d_auction@hotmail.com)  
Website-[www.daughertyauction.com](http://www.daughertyauction.com)



The information in this brochure are from sources deemed to be reliable but it cannot be guaranteed by Daugherty Auction and Real Estate Services, LLC.

# Our Office Will Be Closed Friday, September 1st & Monday, September 4th To Observe Labor Day!

**Deadline For Display Ads • 5:00 PM Tuesday**  
**Classifieds • 11:00 PM Wednesday**  
**Also Submit Ads@ [www.hawkeyetrader.com](http://www.hawkeyetrader.com)**  
**Phone: 641-675-3971**

**FOR SALE:** IH 1660 Combine, Field Ready, 3400 Hours, Both Heads. 515-669-0704 9-1

**FOR SALE:** MF 20 Ft. Flex Grain Table Off A MF 8780, Call. 319-931-2733 9-8

**FOR SALE:** JD-8820 Combines 1982 2WD; 1983 4WD 643 Corn Header; 922 Grain Head; 922 For Parts. Unverferth And Woodworth Wagons. 573-619-2043 9-8

**FOR SALE:** Tall Corn Ends For IHC 3200 And 3400 Series Corn Head. Ask For Mark. 712-830-1197 9-1

**FOR SALE:** JD 693 Cornhead, Poly Hydraulic Deck Plates, Single Point; Kuhn 10 Wheel Rake; 8 Hay Bale Trailer. 641-990-2432 9-1

**BASEMENT READY  
TRUE MODS**  
Instock Ready For Delivery  
**573-657-7040**  
**chateauhome.net**

## Auction Saturday, September 9, 2023 @ 10 am

1027 Hwy. 71 • Villisca, Ia

*Note - This is a 63 year accumulation of farm type items. All major equipment has been shedded for several years.*

**IH Tractors, Truck & Equipment:** All tractors run good & are in orig cond. IH 1456, 8300 hrs., white IH cab, new 18.4x38 tires & rims; IH 856, dsl, WF, 18.4x38, white IH cab, sells w/Kokyer K-5 loader; IH 806, dsl, WF, open station, sells w/McCormick 33 loader; 1976 IH 1700, V-8 gas, air brakes, 19' box & hoist, new air canisters, but needs brake work; IH 480 disc, 20'6", 9" sp, good blades; IH 550 plow, 5-16; IH & Peterson hubs & duals, pressed wheel duals off 560, (5) sets IH rear wts; (5) IH slab frt wts; IH single frt wh for 806 & 560; IH frt wt brackets; tractor toolbox steps.



**Other Equipment:** 2 Heider 7x12 wagons w/silage endgates & sides; JD 7' P.T. gyro mower, good; JD model N PTO spreader; JD 14' gyro mower, not used for a while; JD #22 roller mill; Bear Cat 2430-C hammer mill, complete & good; Shaver HD 7 3 pt post driver; JD Implement trailer, good floor; Demco 3 pt spray boom; Kelly Ryan 5x12 feed wagon; IH 2R planter on steel; Kewanee 8' 3 pt or 2 pt blade; IH 2 pt sickle mower; JD 583 trip plow, 2 btm, good; IH 2 pt shredder; Several pieces of older equipment for IRON!

**Guns sell @ 11 am:** Remington 514, 22 cal, very good; Remington 7mm Rolling block, good; Remington Plains rifle, 36 cal, precision, good.

**Collectibles & Miscellaneous Items:** CI 8 horse hitch; hand well pump; lightning rods; 24" church bell, no yoke; 75 yr old youth saddle; S.S. separator bowls; galv chicken water; dehorners; masculators; *shed full of miscellaneous.* Husquvarna 55 chainsaw; Troy Bilt "Tuffy" rear tine tillers; Mantis tiller; Craftsman blower; Sunbeam animal clippers; P&H 180 amp welder; cutting torch on cart; bolt cabinet w/bolts; saw horses; Qep tile cutter, new; Knipco heaters; Craftsman tool chest & lots more.

**Bill & Delphine Smith 712-826-8249 712-303-7168**



Auctioneers: Steve Bergren 712-789-0847  
Grant Vrba 712-789-2038 • Pete Myers 712-202-0108  
Terms: cash or good check; not responsible for accidents or theft; verbal announcements on sale day take precedence.  
Lunch and port-a-pots on grounds.

<[www.bergrenrealestateandauction.com](http://www.bergrenrealestateandauction.com)>



# ESTATE & MOVING AUCTION

## SATURDAY, SEPTEMBER 9TH, 2023 AT 11:00 A.M.

FAIRGROUNDS COMMUNITY BUILDING • WINTERSSET, IOWA

**HOUSEHOLD:** Oak adjustable-height single bed frame; Large cupboard; Christmas items; Golf bag & clubs; Books; VHS tapes; Kitchen utensils; Table & chairs; Misc chairs; Floor lamps; Silverware; and more.

**ANTIQUES & COLLECTIBLES:** 75 PLUS Boyd's Bear collectibles; East Peru 1887 Centennial eagle; Lots of NASCAR & farm toys; Toy airplanes; 2 flat-top trunks; 2 Large hanging beer signs; Porcelain top table; Marbles; Rocking chairs; Large basket; Perfumers; High chair; 33 & 45 records; Children's toys, books, & chairs; Horse hair lap blanket; Baskets; 10 quilts; Baby dresses; Rolling pins; P Buckley Moss doll in box; Vintage Easter décor; Lots of Vintage Christmas; 40's & 50's Santas; Santa baby plate; Brush trees; Shiny Britte ornaments; 3 Vintage Coca-Cola Santas; Barclay skaters & skiers; Nicole Sayre Christmas & Easter items; 4" Alum silver Christmas tree w/box; 2 silver table-top tinsel cone trees; 1990's Coca-Cola village & ornaments; 1950 Coca-Cola airline cooler; Vintage Budweiser sign; 1948 stuffed Drake Bulldog & Homecoming pin; Pool balls; 3 lamps made from Vintage trumpets; 1922-1925 IA license plates; Vintage cameras; Wood shoe forms; 6 wooden juggling pins; Stagecoach desk; Pabst Blue Ribbon Memorabilia; Handmade American Girl doll furniture; Women's belt buckle collection; Metal hat stands; Small white pitchers; Old tins; 2 Spice cabinets; Coffee grinder; Baseball & Football cards; 2 Mantle clocks; Compacts; Small clocks; Lady head vases; Black Memorabilia; 12 Cookie jars; Beater jar; Blue crock ware; Green malt machine; Luggage; 1931 Adair Co. License plate; Lots of early Adair Co. license plates; Nice Oak highboy dresser w/mirror; Oak rocker; Walnut commode; Pyrex; Weller vase; Stoneware bowls; Old trombone; Galvanized items; Scale; Kerosene lamps; Brown glass rolling pin; Pinball game; Telephone stand; Children's puzzles; Farm related magazines; McGuffey's Readers; 1882 City of Greenfield plat book; Belt buckles; Two world globes; Mission Oak book shelf; Large mahogany mirror; and more.

**OUTDOOR:** Shop Vac; Shovels, Spade, etc.

**GUNS:** Hatson Escort 12 g w/scope; Single shot 12 g; Browning made in Belgium Rifle, butt fed; Baretta 12 g Pump shotgun auto; 22 & 12 g ammo.

**TERMS OF SALE:** ID is required to receive bid numbers. We accept cash and checks, no cards. We are not responsible in case of accident or theft. Thank You! LUNCH SERVED

# HARTMAN AUCTIONEERING

Steve Hartman - Cell 515-468-7857, Home 515-462-4584  
www.hartmanauktioneering.com

# AUCTION FOR THE JOHN BARTELS ESTATE

## Friday, September 8, 2023 10:00 a.m.

17531 Crescent Ave • Elma IA

(From Elma, West of B17, then North on Dale to 180th, Then West to Crescent then North)

**Oliver Tractors:** '71 Oliver 1555 Dsl (Restored, New Rubber, 7337 hrs, Very Nice!); '59 Oliver 990 Dsl (GM dsl, Orig Tractor); '58 Oliver 880 Dsl (Restored, WF, Like New Rubber); '60 Oliver 880 Dsl (Torn Down, For Parts or Restoration); '66 Oliver 770 Dsl (Restored, WF, Like New Rubber); '63 Oliver 770 (Gas, NF); '63 Oliver 770 Gas (WF, Restored, Good Rubber); Oliver 770 (Gas, WF, Parts Tractor); '62 Oliver 660 Dsl (Restored, WF, Like New Rubber); '65 Oliver 550 Dsl (Restored, WF, Like New Rubber); '62 Oliver 440 (Restored, Gas, WF, Like New Rubber); '55 Oliver Super 88 Dsl (WF, Older Restoration, Nice Tractor); '51 Oliver 88 (Gas, New Rubber); Oliver 88 (Gas, Parts or Restoration); '47 Oliver 60 (Restored, NE, Good Rubber); **John Deere Tractors:** '65 John Deere 4020 Dsl w/48 Loader (Powershift, Good Rubber, Quick Hitch, Rear Wts); '70 John Deere 4000 (Recent Restoration, Syncro, WF, Front Wts, Quick Hitch, New Firestones, Tach Reads 2671, None Nicer).

**Excavator, Implements & Machinery:** John Deere 50G Mini-Excavator (3468 hrs), Big Dog Scraper (8 yard), Industrias Americas 120R Six Way Blade, John Deere 3 Pt Blade, 3 Pt Boom Pole, Gnuise Bucket (8'), Oliver 3241 Mtd Plow (2 Btm, Restored), John Deere 1600 Chisel Plow (14 Shank), John Deere 1100 Field Cult (8'), JD Van Brunt Drill (12', Single Disk Opener), John Deere Model 11 Pull Type Sickle Mower, John Deere 1018 Rotary Cutter, Metal Flat Rack on JD Tandem Gear, Flat Rack on JD Gear, Several JD Gears, Stanhoist Barge Box on JD Gear, Minnesota Flare Box on Minnesota Gear, Westfield MK91-10" Auger, Westfield W80 Auger (61').

**Trailers, Campers & Other:** PJ Tandem Axle GN (27', Beavertail, 3 Ramps), Tilt Bed Tandem Axle Trailer; '92 Dutchmen Classic 28FWRK Camper, Four Winds Travel Trailer, Perfect Dump Truck Box, Bulk Bin, Jacks, Hose Reels, 100 gal Fuel Tank, Yard Sprayer, Sockets, Wrenches, Toolboxes, Sanborn Air Compressor, Lincoln 225 Welder, DeWalt Chopsaw, Shop Press, Battery Charger, OIT Drill Press, Elec Motors, Some Oliver Parts, more....

**Note:** John had a fantastic collection of Olivers. The restored tractors are quality restorations, which appear to have had the rubber put on during the restoration. Tractors & Machinery will have online bidding. We expect to be bidding on the tractors near 11:30. Expect the full online bidding catalog & pictures to be posted 7-10 days before the auction.

**Terms:** Cash, Good Check, or Credit Card (3.5% fee), day of sale. No items removed until settled for. All items sold As Is/Where Is Without warranty expressed or Implied. Announcements Day of Sale take precedence over printed material. Terms for Online Bidders available on the website.



800-373-2255  
www.hallbergauction.com

**FOR SALE:** NH 1 Row 818 Silage Cutter, Nice, \$950; JD 1 Row PTO Corn Binder With Carrier, Nice, \$950; 2 - 6x12 Deep Flare Wagons, PTO Run Apron Floor, \$1,150 Each; 6 Or 7 X 12 Heider Or Stand Hoist Hyd. Wagons; Midwest 5, 7 Or 10 Ton Hoists. Pomeroy, IA. No Text.  
712-299-6608 9-8

**FOR SALE:** JD 725 FM Cultivator, 6R 30, Great Condition, Shredded For 30 Years, New Hoses, All Components, \$2,900. Bloomfield, IA.  
641-664-1200 9-1

**FOR SALE:** OCIA Certified Organic Yellow Corn, Alfalfa/Grass Hay, Oat/Hay, 1969 JD 55 Combine With 2 Row Cornhead In Excellent Condition, Always Inside.  
641-751-8382 TFN

**FOR SALE:** New 3 Pt. Tillers, Heavy Duty, Gear Driven, 7 Ft. To 12 Ft. Starting At, \$4,150.  
660-874-4455 12-21-23

**FOR SALE:** M-M Motor Parts G-1000 UP-G Parts Tractor 5 Star U Standard, Come Look Have More.  
660-341-6318 ETFN

**FOR SALE:** Certified Organic Yellow Corn, Oat Hay And Alfalfa Grass Hay.  
641-751-8382 TFN

**FOR SALE:** Bushog 2715 15 Ft. Batwing, \$8,500. M&W Batwing, \$6,500. Sidewinder Batwing, \$2,500. John Deere 216 16' Flex Head, \$600. Shelbyville, MO.  
573-470-3358 9-1

**FOR SALE:** 24 Ft x 5 Ft Free-Standing Cattle Panels, Weighing 600 Lbs Each, Fastener Chains Included. Located in Troy, IA.  
641-680-0892 TFN

### AUTOMOTIVE

**WANTED TO BUY:** 1969-1972 GMC 3/4 Ton, 4x4, Long Bed. No Project Vehicles. Looking For A Good Clean Driving Truck.  
573-544-3783 9-1

**FOR SALE:** 1977 Chevy Nova, 2 Door, All Original, V8 Auto, P/S, P/B, A/C, Needs Restored, Runs & Drives, \$4,000 OBO, Troy.  
636-462-2221 9-1

### LIVESTOCK

**BULLS FOR LEASE:** Over 70 Registered Angus & Hereford To Choose From. 90 Day Lease, \$900. Trucking Available At Extra Charge. Kingdom City, MO.  
573-999-3197 TFN

### MISC

**HUGE TRUCKLOAD:** Mattress Sale!!! Call To See When They Arrive!

**Bargain Warehouse**

**Memphis, MO**

660-465-2591

9-1



515-971-6450

CALL TO SCHEDULE A  
FREE ESTIMATE!

www.hawkeyetrader.com

# Land Auction

Due to the death of our mother Nina M. Forsythe we will sell at public auction 160 acres m/l of land in two tracts on

**Saturday, Sept. 16 • 10 a.m.**

**18001 Fawn Ave., Drakesville**

Take blacktop road west of Drakesville three miles then south one mile to sale site.



## Tract #I

This tract consists of 60 acres m/l with an all modern split foyer home with basement, attached garage, utility building and barn. This tract of land offers excellent hunting and fishing, has large lake and pond. There is timberland, wooded draws and pastureland. This is ideal for the outdoor sportsman or small farmer.

## Tract #II

This tract of land contains 100 acres m/l that is nearly all tillable.

**Terms:** 10% down at close of Auction, balance due at closing.

**Taxes:** Prorated to date of possession.

**Possession:** March 1, 2024 except home which will be Nov. 1, 2023

**Auctioneers Comments:** This will be a rare opportunity to come and bid and buy at a live public auction is a very good farm in Davis County. To inspect this home prior to auction date contact the Auction Company. The home will not be available for viewing on sale day. **This is a public auction, so make your arrangements and come prepared to buy.**

# Nina M. Forsythe Trust Estate

Attorney for Seller:  
Ed Cox, Centerville, Iowa

18001 Fawn Ave., Drakesville, IA

Co-Executors  
Marcella Thompson  
Bloomfield, Iowa  
Nolen Forsythe  
Oskaloosa, Iowa

**Terms:** Cash or good check. \$35.00 returned check fee. Not responsible in case of accident. The information in this sale brochure was obtained from the best reliable sources available to us. However, the Auctioneers or their employees will not be held liable should the above information be incorrect. Any announcement made day of sale will take precedence over any previous advertising.

SALE CONDUCTED BY  
**Horn's Auctioneering Service**  
209 East Jefferson, Bloomfield, IA  
Don Horn - 641-208-0254 • Richard Yoder - 641-226-4984  
"We don't talk service, we give it."  
Auctioneers:  
Don Horn • Richard Yoder • Rodney Lawson



### Five Star Fest

5-Star Auction Grounds, 2530 Hwy 22 Riverside, IA  
 • General Gate Admission - \$3.00 per person •  
 • 12 & Under: FREE Admission • FREE Parking •  
 ☼Rain or Shine☼

Friday, October 20 - 2023 • 8 A.M. - 8P.M.  
 Saturday, October 21 - 2023 • 8 A.M. - 5 P.M.

#### Flea Market/Small Animal Swap Meet

(Delmar - 319-430-2711 • Lonnie - 319461-0019)  
 20x40 space - \$50 Outdoor • 10x20 Indoor - \$50  
 (Any Size Available priced according to size)

#### Biggest Little Indoor Gun Show In Iowa

75+ Tables - (Gary - 319-325-5115)  
**Friday, 12p.m. - 8p.m. • Saturday, 8a.m. - 5p.m.**  
 •Additional \$5.00 Admission For Gun Show• - \$30 per table

#### \*Vendors Wanted\*

Vendor Setup - Thursday, October 19 - 2023

Note: Food Available All Day •Not Responsible for accidents or theft•



Delmar Yoder: 319-430-2711  
 Lonnie Miller: 319-461-0019  
 Website: 5starauction.com

### Need Rebar?

**Wholesale**

**AW Metal LLC**  
 Metal Roofing Headquarters

**641-664-3990**  
**www.awmetal.net**

**\$59,900 NEW MOBILE HOME AVAILABLE NOW**

**573-881-7965**  
**marktwainmobilehomes.com**

**Place Your Ad At**  
**www.hawkeyetrader.com**

**GINGERICH SAWMILL, INC.**

Buyers of standing timber. **30 Years In Business**  
 Walnut & soft Maple  
 (our specialty), also other species. Bonded.

**WE PAY BEFORE CUTTING**

**BLOOMFIELD, IA • 641-722-3002**

**2009 FLHTCU Ultra Classic**  
 Hi-Flo Air, Custom Windshield, Nice!

**NO DOC FEES!** **\$8,995**

**C&C Cycle**  
 Chariton, IA • 888-475-2243  
**www.cc-cycle.com**

## REAL ESTATE AUCTION

**SATURDAY, OCTOBER 7, 2023 10:00 AM**

SALE TO BE CONDUCTED AT THE PROPERTY LOCATED  
**1018 GLENWOOD, OTTUMWA, IOWA**

**REAL ESTATE:** Outstanding 2-bedroom ranch-style home, large kitchen, 1-3/4 baths. Full finished basement, plus 10'x24' 3-seasons room. Vinyl siding, newer roof. 26'x26' detached garage, constructed in 2003, plus paved drive. Be sure and make an appointment to see this outstanding, well-cared-for efficient home. Close to schools. Excellent South location.

**TERMS:** 20% down day of sale, balance in cash upon delivery of a Deed of Trust, accompanied by Abstract of Title showing merchantable title. Real estate taxes will be pro-rated to possession date, possession given upon settlement.

**REAL ESTATE WILL SELL AT 12:00 NOON**  
 For further particulars or an appointment to inspect the property, please call the auction company: 641-682-5465.  
 Watch future publications for a complete sale ad.  
*Announcements made day of sale take precedence over any advertising.*

**ANNA JANE WILLIAMS TRUST, OWNER**

**AL MARTIN REAL ESTATE & AUCTION CO., INC.**  
 307 Church Street • Ottumwa, Iowa  
**641-682-5465**  
 Find us on Facebook at Al Martin Real Estate Co **www.almartinauctions.com**

## ONLINE ONLY WEVER, IA FARM EQUIPMENT AUCTION

**LOTS BEGIN CLOSING: WED., SEPT. 13TH AT 10AM**

**PREVIEW: MON., SEPT. 11TH FROM 10AM-12 NOON**  
 ITEMS LOCATED AT 3699 185TH ST, WEVER, IA

From the intersection of Hwy. 61 and 180<sup>th</sup> St travel East past the Iowa Fertilizer Plant 2 miles to 370<sup>th</sup> Ave, then 1 mile south. Sale site is at the corner of 370<sup>th</sup> Ave & 185<sup>th</sup> St



**HIGHLIGHTS INCLUDE:** 2003 John Deere 8420 MFWD tractor w/3,747 hours. 1994 John Deere 6300 tractor w/4,417 hours. 1992 John Deere 9400 combine. John Deere 444 corn head. John Deere 915 platform. John Deere 7000 planter. 2015 John Deere 2623VT 30"8" vertical tillage. John Deere 1010 24' field cultivator. 2013 John Deere 2720 disk ripper. John Deere 4000 rotary hoe. John Deere 825 4 row 36" cultivator. John Deere 2800 bottom plow. John Deere 115 rear blade. Mayrath 8X52 540PTO auger. Mayrath 8X52 electric auger. 2022 John Deere Z970R mower w/72" deck. Antique Chevy 3600 flatbed pickup. Traeger BBQ 075E pellet grill. Large assortment of hand & power tools, welders, drill press, etc. and farm support items. Farm primitives.

**Pickup/Removal of Items:** Friday, September 15<sup>th</sup> from 8 - 12 Noon. All hayrack items, tools, shop equipment, smalls and items located indoors must be picked up during the designated pickup time, **NO EXCEPTIONS!** Farm equipment buyers will have 10 days for removal. Loader tractor will be available Friday, September 15<sup>th</sup> only. A 5% Buyers Premium will apply to all purchases. Everything sells As is, where is, without any warranty. All items sell Absolute, regardless of price.

**CHARLES H. MILLER ESTATE & ELLYN MILLER- OWNERS**



**FraiseAuction.com**  
**319-367-5744**

**Vermeer 605 N Balers, Twin Rakes, Trailed Mowers, Disc Mowers, Tedders, Bale Processors**

**DewEze Bale Beds**

**Danhauser Posthole Diggers & Posthole Drivers**

**Hide-Away 5th Wheel Hitches**

**Flex Harrows**

**Used Equipment**  
**9000 Bale Processor**

**Call Us For All Your Used Equipment Needs**

**Liebhart Sales, Inc**  
 17546 Lacey Drive • New Boston, MO 63557  
**660-689-3406**

**2016 CVO Street Glide**  
 Super Clean!  
 20K Miles

**Trailer Sold Separately**

**NO DOC FEES!** **\$25,999**

**C&C Cycle**  
 Chariton, IA • 888-475-2243  
**www.cc-cycle.com**

## MACHINERY AUCTION

**Saturday, Sept. 9, 9:00 AM**

**1129 Hwy 163, Pella, IA (2 miles east of Pella)**  
**COMBINE, TRACTORS, GRAIN BINS, AND MACHINERY**

95 E Cat Challenger 7000 hrs.; Cat Challenger 65C with 3 pt., PTO is out; 78 Case 580C backhoe with 61/2 ft bucket, 2811 hrs.; 66 Farmall 806 turbo with WF; 75 IH 574 gas utility tractor; 94 Case IH 7240, PS with duals; IH Farmall 1566, turbo with cab; IH TD 8 series E dozer with 7 ft. blade; 2004 IH 2388 combine; IH 1020 25 ft. grain platform; IH 1063 6 row corn hd; Great Plains YP 1225 12 row corn planter, with row cleaners and bean cups; 2 box seed tender; Land Pride 15 ft. batwing mower; 2006 JM 1000 grain cart, no scale; IH 32 ft. turbo till; Case IH 870 7 shank ripper with rolling baskets; 32 ft. Kent soil finisher; 14 knife Blue Jet anhydrous bar, wheel drive pump; 6 ft. 3pt mower; 16 ft. goose neck machinery trailer; Craftsman 5000 riding mower; 3pt 2 stage fork lift; Nissan 3 stage fork lift, mast only; 500 gal portable fuel barrel; 500 gallon LP tank, no tag; large amounts of extra weights; large amount of electric motors; steel shelves; wooden poles; anhydrous pump; 36 ft. Butler grain bin; 30 ft Sioux grain with fans; a large hay rack full of tools normally found in a farm shop; box of old magnets; Lincoln stick welder; and more.

**Selling for others:** John Deere 9610 combine, 4934 engine hrs., 3261 separator hrs., been through the shop every year (call John: 641-660-3145); JD 2940 with JD 148 loader, 2385 hrs. (641-780-1917); JD 24 T baler; 6x10 trailer; Hardi Nav 1000 sprayer with 90 ft boom, 4 section shut off, and 3 nozzles (641-891-6238); Kent 22 ft. soil finisher; George White 8 ft. 3 pt. snow blower; 30 ft. head trailer; IH 4600 24 ft. FC.; Fetryl 26 ft., truck auger with gas engine; JD 7000 6 row planter; IH 550 plow; IH 46 baler; Dakon 6 row cultivator; old MW grain drill; 2 JM 300 bushel wagons with truck tires; 14 ft. fishing boat on a trailer; JD 14T baler; 20 ft. krause disc; JD 7 ft. sickle mower.

**OWNER: ROBERT HUGEN • 641-660-2959**

**NOTE:** We are accepting some consignments, so the bill is changing daily. I will try to update the website as often as needed for the additions. Go to the website for pictures: **www.tricountyauktion.com**. Terms of the sale are cash or good check. Announcements day of the sale take precedence over any written ad.

## Tri-County Auction Co.

Brad Veenstra, 641-780-4077 **www.tricountyauktion.com**



**McAfee Auction Service, LLC**  
 375 S Johnson • Kahoka, MO  
 660-727-3796  
 www.mcafeeauctionservice.com

ADAIR CO, MO REAL ESTATE AND  
 PERSONAL PROPERTY ESTATE AUCTION  
 SATURDAY SEPT 9<sup>TH</sup> - 10 AM

Sale conducted onsite located at 16626 Rolling Hills Rd. Novinger, MO



Rural Adair Co. Property  
 4.1 +/- Ac  
 3BR, 2 Bath (1998)  
 Manufactured Home  
 30X36 2 car garage  
 Other buildings

Also selling Classic 1927  
 Chevy 2 door sedan,  
 1962 Chevy 4WD , 2002  
 GMC Sonoma, Shop  
 Equip., Tools & Misc  
 Other Items

COMPLETE DETAILS & PHOTOS ONLINE!  
 LARRY W. BELCHER, ESTATE



**2021 CF Moto**  
 G-Force 800, Winch,  
 4x4, Only 400 Miles,  
 2 Seater,  
 Power Steering,  
 EFL,  
 Great Shape

NO DOC FEES! \$7,295

C&C Cycle  
 Chariton, IA • 888-475-2243  
 www.cc-cycle.com



**Edina Livestock Sales**  
 Edina, Missouri  
 Weekly Sales Start @ 12:30 PM

**Friday, September 1st - Special Feeder Calf Sale**

**Friday, September 8th - Special Feeder Calf Sale**

**ALL SALES TELEVISED ON DV AUCTION  
 To Consign For Any or All Sales  
 or For All Information Call:**

Owner - Kevin Strange • Cell: 660-341-9974  
 Ryan Strange • Cell: 660-341-9721  
 Sale Barn: 660-397-9999

**Field Reps:**  
 Bill Tom Hall 660-342-5420 • Jason Bischel 660-216-0373  
 Mike Bronestine 660-341-9965 • John Powell 660-341-1717



L-2300398

LAND AUCTION

SIMULCAST LIVE AND ONLINE

109.61± Acres • Jasper, Iowa  
 Newton Arboretum | 3000 North 4th Avenue | Newton, Iowa  
 Thursday, September 7, 2023 at 10:00 AM

Bidding starts | Tuesday, September 5, 2023 at 8:00 AM  
 Bidding closes | Thursday, September 7, 2023 at close of live event  
 To register and bid go to: [WWW.FNCBID.COM](http://WWW.FNCBID.COM)

-- Open tenancy cropland for 2024! --  
 -- Offered in two individual tracts --  
 -- Gently rolling topography with above average CSR2's --  
 -- Grain bin storage on Tract 1 --

**For more information on property details, please contact:**  
**John and Kathy Van Zee, Agents**  
 Phone: (641) 521-0151 or (641) 521-5305  
 JVanZee@FarmersNational.com  
**Eric Van Zee, Agent**  
 Phone: (515) 971-2633  
 EVanZee@FarmersNational.com  
[www.FNCRealEstate.com](http://www.FNCRealEstate.com)

# SEPTEMBER

**Sporting Goods  
 Consignment Auction**

**Friday Sep. 29<sup>th</sup> 9:30 A.M.**  
**Saturday Sep. 30<sup>th</sup> 9:30 A.M.**


5-Star Auction Bldg. 2530 Hwy 22 Riverside, IA

**Friday – Day 1 – Hunting supplies, Fishing supplies,  
 Archery, knives, Optics, Wall pictures, deer mounts,  
 reloading equipment & supplies, and much more.**

**Saturday – Day 2 – Ammunition – of all descriptions,  
 Guns – Air Rifles, Blackpowder Rifles, Revolvers, Pistols,  
 Long Guns, Collectors, Wall Hangers, ect.**

**Advertising Deadline – Sep. 12<sup>th</sup> 2023: Accepting Items Sep. 18<sup>th</sup> – Sep. 26<sup>th</sup>  
 Open House – Thurs. Sep. 28<sup>th</sup> 8 A.M. – 5 P.M.  
 \*All Gun Transfers Done on Site\***

**Auctioneers Note:** Mark your calendars, 2-Big Days, Only Guns & Ammo Day  
 2; Call Early for proper Advertising; \*Live On Site Auction\*



Auctioneers:  
 Delmar Yoder: 319-430-2711  
 Lonnie Miller: 319-461-0019

# LABOR DAY

ESTATE AUCTION  
 SATURDAY, SEPTEMBER 9, 2023 10:00 AM

SALE TO BE CONDUCTED AT THE PROPERTY LOCATED  
**#23 GREENBRIAR, OTTUMWA, IOWA**  
 Greenbriar is located off of Birchwood Drive  
 Auction Signs Will Be Posted

**REAL ESTATE:** Terrific opportunity to purchase 2-story, 4-bedroom, 2-1/2 bath home, in an out-standing wooded setting. Built in 1979, with over 2,500 square feet of living space. Full basement, attached 2-car garage. Main level contains eat-in kitchen, main-floor laundry, large living room with fireplace, formal dining area plus family room. Situated on a timbered lot, 3/4 of an acre in size. Close to the Ottumwa Regional Health Center. Attention: this dwelling represents an opportunity for rehab, to make this property to your personal tastes.

**TERMS:** 20% down day of sale, balance in cash upon delivery of a Court Officer Deed, accompanied by Abstract of Title showing merchantable title. Real estate taxes will be pro-rated to possession date, possession given upon settlement.

**REAL ESTATE WILL SELL AT 12:00 NOON**  
 For further particulars or an appointment to inspect the property, please call the auction company: 641-682-5465.

**FURNITURE, COLLECTIBLES & HOUSEHOLD ITEMS:** Wicker settee & 2 matching chairs w/ table; Hall trees; Old wooden rocker; Wooden straight chairs; Formica-top dinette table & 2 matching chairs; Floor & table lamps; Dressing screen; Folding picnic table; Large asst. of shelving, some NIB; Lawn chairs; Yamaha DVD player; New Magnavox VCR; Asst. of ceramics; New stoneware dishes; Star War collectibles; Seth Thomas collectibles; Sports memorabilia; Large collection of duck decoys; Asst. of toys & games; Owl collection; Crystal ware; Clocks; Luggage; New elec. heaters; Asst. of cookware; New computer printers; Fireplace set; World globe; Blankets, towels & linens; Office equipment; Storage containers; New electronic keyboard; Stepstool; Metal cutouts; Large asst. of exercise equipment incl. treadmills, bar weights, conditioning vests, new weight bench w/weights, rowing machine; Several 6' fiberglass tables; Asst. of lawn tools incl. hoes, rakes, shovels, post jobbers, lawn spreader; New garden hoses; Gas cans; 16' alum. extension ladder; 6' wooden stepladder; 2-wheel dolly; Asst. of hardware items; Shop light; Toolboxes & hand tools; Dual Links bicycle, like new; 10-sp. bike, like new; GUNS: Henry lever-action 22 rifle, NIB; Marlin 30-30 lever-action, Model 336W, gold trigger; Taurus Spectrum 380 pistol, NIB; Taurus PT-22 pistol, NIB; Taurus 22 revolver; Taurus The Judge 410-45 magnum; German Sport Guns Model GSG5 SD 22-cal. rifle, NIB; Traditions black powder 50-cal. rifle w/scope, NIB; FLIpietta 44-cal. black powder revolver, NIB. **GUN PERMIT REQUIRED FOR THE SALE OF ALL FIREARMS.** Compound bow & arrow set; Asst. of hunting knives, daggers & outdoor equipment.

**COINS:** Large asst. of coins incl. Ben Franklin half-dollars, war-time silver nickels, buffalo nickels, Jefferson nickels, Ike dollars; Large asst. of Kennedy half-dollars; Peace dollars; Susan B. Anthony dollars; Morgan dollars; President dollars; Mercury dimes; Roosevelt dimes; Several proof sets & mint sets; Drummer boy quarters; Walking Liberty coins; Indian head pennies; Wheat pennies; Asst. of foreign coins incl. 1931 2-shilling coins; Spanish coins & bills; 1960 French franc; Great Britain coin books; Canadian & Dominican Republic coins. **Large collection of gentlemen's belt buckles. Watches, incl. wrist watches & pocket watches; Small asst. of jewelry & collectibles.**

**AUTOMOBILES:** 2015 Ford Fusion, 4D, full power; 1988 Ford Taurus station wagon, V6, auto, non-running, stored inside.

**AUCTIONEER'S NOTE:** This is a unique auction, with many unadvertised items. As there is an immense amount of new items yet to be unboxed. Coins & jewelry will sell at 11:00 AM, with automobiles to sell immediately following the real estate. We will be running two rings at least part of the day. Go to our website for pictures – [www.almartinauctions.com](http://www.almartinauctions.com).

**TERMS: CASH/GOOD CHECK** **MASTERCARD/VISA DEBIT/CREDIT CARDS**  
**POSITIVE ID REQUIRED**  
 All property must be settled for before removal – All items sold as is where is  
 Not responsible in case of accidents.  
 Announcements made day of sale take precedence over any advertising.

MARK L. DILLON ESTATE, OWNER

South Ottumwa Savings Bank, Administrator Paul Zingg, Attorney



**AL MARTIN REAL ESTATE & AUCTION CO., INC.**  
 307 Church Street • Ottumwa, Iowa  
**641-682-5465**

Find us on Facebook at Al Martin Real Estate Co [www.almartinauctions.com](http://www.almartinauctions.com)

# TAMA LIVESTOCK AUCTION

## 641-484-3465

Fed Cattle, Slaughter Cows & Bulls  
Every Wednesday at 9:00 am

---

### SPECIAL ANNUAL CUSTOMER APPRECIATION YEARLING SALE

Friday, September 8, 2023 - 11:00 AM

### SPECIAL ANNUAL CUSTOMER APPRECIATION CALF SALE

Monday, Septembr 11, 2023 - 11:00 AM

For Markets & Listings go to  
[www.tamalivestock.com](http://www.tamalivestock.com)




L-2300437



# LAND AUCTION

SIMULCAST LIVE AND ONLINE

**80± Acres • Jasper, Iowa**  
Newton Arboretum | 3000 North 4th Avenue | Newton, Iowa  
**Thursday, September 7, 2023 at 2:00 PM**

Bidding starts | Tuesday, September 5, 2023 at 8:00 AM  
Bidding closes | Thursday, September 7, 2023 at close of live event  
To register and bid go to: [WWW.FNCBID.COM](http://WWW.FNCBID.COM)

-- OPEN TENANCY for 2024! --  
-- Cropland with terraces, pasture land, and timbered creek --  
-- CSR2 of 66.54 --

For more information on property details, please contact:  
**John and Kathy Van Zee, Agents**  
Phone: (641) 521-0151 or (641) 521-5305  
JVanZee@FarmersNational.com  
**Eric Van Zee, Agent**  
Phone: (515) 971-2633  
EVanZee@FarmersNational.com  
[www.FNCRealEstate.com](http://www.FNCRealEstate.com)

339 CATTLE LAST WEEK | EXPECTING 1000 THIS WEEK



**OSBORN  
LIVESTOCK AUCTION**  
Located 7 miles West of Cameron on  
HWY. 36, OSBORN, MO

**Barn Phone: (816) 675-2424**  
Danny **(816) 649-8485**  
Transportation and Order Buying Available • Bonded • Insured

**SALE EVERY WEDNESDAY | 11:00 a.m.**

	STEERS		HEIFERS
300#.....	\$3.00		\$2.68
400#.....	\$2.80		\$2.61
500#.....	\$2.64		\$2.57
600#.....	\$2.55		\$2.35
700#.....	\$2.45		\$2.25
800#.....	\$2.40		\$2.15
900#.....	\$2.31		\$1.85
1000#.....	\$1.96		\$1.75
1100# Fats.....	\$1.73		\$1.71
Top Cow: \$1.20 - Orreck		Holsteins & Longhorns: \$0.71-\$1.12	
Top Bull: \$1.38 - Braymer		Dairy X & Longhorn X: \$1.12-\$1.36	

**POT LOAD 750# STEERS & 700# HEIFERS  
CHECK FB FOR MORE DETAILS**

**Buying Butcher Cows & Horses Daily  
We Have 9 Butcher Cow Plants Represented**

**RECEIVING HOURS: Daily until sale time**

Owner, Jayme Walker 816-665-4277	Todd Gottswiller, Fieldman 816-390-7917
Randy Vanderkooi, Fieldman 816-632-0694	Gary Mann, Fieldman 816-294-5849
Ivan Kanak, Fieldman 816-724-1043	Bill Bray, Fieldman 816-724-0438
Frank Peterson, Fieldman 660-247-2306	Gary Jackson, Fieldman 816-724-4348
Dale Coble, Fieldman 816-213-3581	Dennis McDowell, Fieldman 816-646-6634

**8th Annual  
Lebanon School  
Consignment Auction**

Auction held at:  
14682 Route J40 • Milton, IA 52570

**Sat., Sept. 16, 2023 @ 9:00 AM**

**Flyer advertising deadline is  
August 1, 2023**

Taking consignments of: Horses, Ponies,  
Machinery, Livestock Equipment,  
Building Materials, Shop Tools, Farm Misc.,  
Antiques, New and Used Furniture.

**NOTICE: No annual flowers. No small house-  
hold items. No garage sale items please.**

**We will be accepting consignments onsite from  
7 AM to 6 PM - Sept. 13, 14th & 15th**

All commission will go to the school.  
Rates: up to \$50.00.....20%  
\$50.01-\$100.00.....15%  
\$101.00 & up.....10%  
Horses & Ponies.....7%  
\$500 cap per horse. Tickets under \$4.00 will be donated to the school.

**Call with your consignments!**  
Contact Allen Miller @ 319-677-6021  
or Paul Yoder @ 319-538-7332  
or Larry Weaver @ 660-216-4954

**High Auction Service LLC • Randy High 660-216-0515**

**FOR SALE:** 1 Or 2 Horse Parade Wagon, \$375, \$575; Steel, Rubber, Or High Wheel Wagons With Boxes; 50 Ft. Elevator, 20 Inch Wide, For Hay, Grain, Or Wood, Etc \$475; Lots Of Old Machinery For Farm Use, Parades, Decoration. They Don't Make It Anymore. People Are Cutting It Up And There Will Be No More! Pomeroy, IA. No Text. 712-299-6608 9-8

**DAVE'S:** Mobile House Washing And Pressure Wash, Decks, Patios And Driveways. Removing Dirt, Mold And Algae. 319-371-5222 9-9

**WE HAVE PLUMBING PARTS:** Hydrants, PVC, Pex, Poly, Toilets, Faucets And Much More. Contractor Discounts. Gingerich Stoves LLC. Drakesville, IA. 641-722-3540 9-1

**SCOTT HUSKEY'S INSULATED SKIRTING SYSTEMS:** Keeps Your Home Cooler In The Summer - Warmer In The Winter - Saves On Utilities And Looks Great! Since 1972. 573-696-3468 TFN

**EARBUDS:** Wireless \$59 A Set.  
**Bargain Warehouse**  
Memphis, MO  
660-465-2591 9-1

**FREE HEAT & HOT WATER:** Eliminate Monthly Heating Bills w/Classical Outdoor Wood Furnace. No Sunday Calls. 660-707-3866 TFN



**2011 Polaris Ranger XP**  
800  
4x4,  
Windshield,  
Roof,  
6K Miles

**NO DOC FEES!** **\$7,995**

C&C Cycle  
Chariton, IA • 888-475-2243  
[www.cc-cycle.com](http://www.cc-cycle.com)

## OBERHOLTZER



Specializing in Aluminum Hopper Trailers • Repair & Rebuild

**We Install Tarps & Power Tarps**

Timpte & Wilson Trailer Parts Available Wilson  
**660-341-6027 • 660-282-1012**  
3 Miles East of Gorin, MO on Route U

## MID-STATES HORSE & TACK AUCTION



**Kirksville Livestock Market  
Hwy 63 North • Kirksville, MO**  
**Saturday, September 30, 2023**  
Tack @ 10:00 AM - Horses @ 2:00 PM  
Guest Consignors Only on Tack - No Used Tack.  
Taking Early Consignments Now!  
Check Us Out & Like Us on Facebook  
@ Mid-States Livestock Sales  
for All Our Early Listings and Videos.  
For More Info:  
Josh Weaver 660-341-7964 • Jeb Weaver 660-341-1866



## Pocahontas Machinery Consignment Auction

**Wednesday September 13, 2023 @ 8:00 A.M.**  
Big Red Shed on Hwy 3 East ~ 401 1/2 E. Elm, Pocahontas, IA  
**SELLING:** Tractors, Skidloaders, Combines, Heads, Spring & Fall Tillage Equipment, Semi's & Semi Trailers.  
Plus other misc. farm related items.  
**LOT IS FULL!!!!!!**  
Four Rings starting at 8:00 AM  
**For Full List Go To: [salebarn.ncn.net](http://salebarn.ncn.net)  
or [Equipmentfacts.com](http://Equipmentfacts.com) for online bidding**  
Winegarden Auctioneering, LLC  
Rick ~ 712-358-0974 Office 712-335-3117

**Warranty • 319-696-2981 • Warranty • www.rsautosalesinc.com • Warranty • 319-696-2981 • Warranty • 319-696-2981**

**R.S. AUTO INC.**  
 Office (319) 696-2981  
 214 S. Center St  
 Lockridge, IA 52635  
 www.rsautosalesinc.com  
 rsautoinc@yahoo.com

**319-696-2981** Check Our website for our wide Variety on  
**4x4 Trucks - Cars - Mini Vans - Handicap Vans - SUV**  
**Motorhomes & Much More!**

<p>45,941 Miles  <b>Handicap Van</b>  <b>\$28,900</b></p> <p>'16 Chrysler Town &amp; Country          3.6L 6 Cyl, Automatic, Gas, Handicap Conversion, Pwr Slide Ramp, Kneels System</p>	<p>55,379 Miles  <b>Handicap Van</b>  <b>\$29,900</b></p> <p>'10 Chrysler Town &amp; Country Touring          3.8L V6, Auto, Flex Fuel, Handicap Conversion Mini</p>	<p>84,052 Miles  <b>Handicap Van</b>  <b>\$15,900</b></p> <p>'06 Dodge Grand Caravan          3.8L 6 Cyl, Auto, Handicap Van, Power Wheelchair Ramp, Camera, Rear Park Assist</p>	<p>Local Trade  <b>\$3,450</b></p> <p>'08 Dodge Grand Caravan SXT          3.8L V6, FWD, Gas Engine, Auto, Stow-N-Go, 3rd Row Seating, Cloth Interior</p>	<p>149,292 Miles  <b>3rd Row Seating</b>  <b>\$13,900</b></p> <p>'14 GMC Acadia SLT1, 3.6L 6 Cyl, Gas Engine, Camera, Sunroof, 3rd Row Seating, Leather, DVD Player, Touch Screen</p>	<p>67,599 Miles  <b>\$13,900</b></p> <p>'15 Jeep Renegade Latitude          2.4L 4 Cyl Engine, Auto, Gas, Camera, Cloth, Touch Screen</p>
<p>69,428 Miles  <b>4x4, 6 Spd Manual</b>  <b>\$23,900</b></p> <p>'13 Jeep Wrangler Unlimited Sahara          3.6L V6, 4x4, 6 Spd Manual, Hard Top, Cloth Interior</p>	<p>86,123 Miles  <b>AWD</b>  <b>\$14,900</b></p> <p>'13 GMC Terrain Denali          2.4L 4 Cyl, AWD, Auto, Sunroof, Leather, Rearview Camera, Park Assist Sensors</p>	<p>101,602 Miles  <b>California 4x4</b>  <b>\$9,900</b></p> <p>'13 Jeep Patriot Latitude          2.4L, 4 Cyl, 4x4, Gas, Auto, Cloth Interior, Heated Seats, Remote Start</p>	<p>114,280 Miles  <b>4x4</b>  <b>\$9,900</b></p> <p>'11 Dodge Nitro Heat          3.7L Gas Engine, 4x4, Automatic, Sunroof, Cloth Interior, Sirius XM</p>	<p>111,364 Miles  <b>ARIZONA VEHICLE</b>  <b>\$9,900</b></p> <p>'10 Chevy Equinox LT          2.4L 4 Cyl, AWD, Auto, Cloth Interior, Steering Wheel Controls</p>	<p>Local Trade  <b>\$7,900</b></p> <p>'09 GMC Acadia SLT          3.6L 6 Cyl Gas Engine, Sunroof, 3rd Row Seating, Leather Interior</p>
<p>119,540 Miles  <b>4x4</b>  <b>\$7,900</b></p> <p>'08 Dodge Nitro SLT          3.7L 6 Cyl, AWD, Auto, Leather Interior, Sharp!</p>	<p>145,393 Miles  <b>AWD</b>  <b>\$5,900</b></p> <p>'07 Nissan Murano SL          3.5L V6, AWD, Auto, Sunroof, Gas, Heated Leather, Camera</p>	<p>154,470 Miles  <b>AWD</b>  <b>\$5,900</b></p> <p>'08 Ford Edge LTD          3.5L Engine, AWD, Auto, Gas, Sunroof, Rear Park Assist, Leather Interior</p>	<p>171,598 Miles  <b>\$4,900</b></p> <p>'04 Chevy Trailblazer          4.2L Gas Engine, Auto, Cloth Interior, 3rd Row Seating, 7 Passenger, Local Trade</p>	<p>105,466 Miles  <b>Hybrid</b>  <b>\$6,450</b></p> <p>'08 Honda Civic Hybrid          1.3L Engine, Auto, Gas, Sedan, Cloth Interior, Clear Title</p>	<p>122,388 Miles  <b>Hybrid</b>  <b>\$5,900</b></p> <p>'07 Toyota Prius Hybrid          1.5L 4 Cyl Hybrid Engine, CVT Transmission, Push Button Engine Start</p>
<p>75,827 Miles  <b>Hybrid</b>  <b>\$19,900</b></p> <p>'16 Toyota Prius Hybrid          1.8L 4 Cyl Engine, Hatchback, Camera, Leather</p>	<p>49,672 Miles  <b>\$10,900</b></p> <p>'16 Dodge Dart Rally, 2.4L 4 Cyl Gas Engine, Auto, Sedan, Camera, Cloth Interior, LED Lights, 8.4" Touch Screen</p>	<p>101,931 Miles  <b>\$7,900</b></p> <p>'16 Ford Fiesta SE          1.6L 4 Cyl Gas Engine, Auto, Sedan, Cloth Interior, Super Clean</p>	<p>102,551 Miles  <b>\$14,900</b></p> <p>'15 Hyundai Sonata Ltd          2.4L 4 Cyl, Hybrid, Sunroof, Camera, Leather, Navigation, Push-Button Start</p>	<p>90,702 Miles  <b>\$12,900</b></p> <p>'14 Buick LaCrosse CXL          3.6L 6 Cyl, FWD, Auto, Gas, Sedan, Leather Interior, Touch Screen</p>	<p>Local Trade  <b>\$1,995</b></p> <p>'01 Buick Regal          3.8L 6 Cyl, Gas Engine, Auto, Gray Leather, Normal Wear, Runs &amp; Drives</p>
<p>65,521 Miles  <b>\$8,900</b></p> <p>'14 Chevy Spark LT          1.2L 4 Cyl, Gas Engine, Auto, Hatchback, Cloth Interior, Flat Screen Display</p>	<p>175,938 Miles  <b>AWD - California Truck</b>  <b>\$8,900</b></p> <p>'12 Subaru Outback Premium          2.5L 4 Cyl, AWD, Auto, Hatchback, Heated Seats, Rust Free</p>	<p>105,732 Miles  <b>Diesel</b>  <b>\$12,900</b></p> <p>'12 Volkswagen Jetta TDi          2.0L 4 Cyl, AWD, Auto, Diesel, 4 Dr Wagon, Sunroof, Leather</p>	<p>51,224 Miles  <b>\$7,900</b></p> <p>'08 Chevy Impala LT          3.5L 6 Cyl Gas Engine, Auto, Cloth Interior, Extra Clean</p>	<p>95,053 Miles  <b>\$4,450</b></p> <p>'05 Ford Focus ZX5          2.0L 4 Cyl, Gas Engine, Auto, Hatchback, Gray Leather</p>	<p>94,797 Miles  <b>\$4,900</b></p> <p>'04 Oldsmobile Alero GLS          3.4L 6 Cyl, FWD, Auto, 2 Dr Coupe, Leather, Sharp!</p>
<p>126,854 Miles  <b>\$4,900</b></p> <p>'08 Dodge Caliber SXT          2.0L 4 Cyl, Gas Engine, Auto, 4 Dr Hatchback, Cloth Interior</p>	<p>28,890 Miles  <b>\$3,900</b></p> <p>'06 Chevy Cobalt LT          2.2L 4 Cyl Gas Engine, 2 Dr Coupe, Auto, Cloth Interior, Normal Wear</p>	<p>100,720 Miles  <b>Convertible</b>  <b>\$4,900</b></p> <p>'00 Pontiac Sunfire GT          2.4L Gas Engine, Automatic, 2 Dr Convertible, Cloth Interior</p>	<p>126,768 Miles  <b>AWD</b>  <b>\$5,900</b></p> <p>'08 Ford Explorer XLT          4.0L V6, AWD, Auto, Gas, 3rd Row Seating, Cloth Interior</p>	<p>100,339 Miles  <b>4x4</b>  <b>\$10,900</b></p> <p>'08 Chevy Colorado LT          3.7L 5 Cyl, 4x4, Auto, Crew Cab, Gas Engine, Cloth Interior</p>	<p>Local Trade  <b>\$4,900</b></p> <p>'02 Chevy Avalanche Z71, 5.3L V8 Engine, 4x4, Auto, Sunroof, Leather Interior, Aftermarket Wheels, Normal Wear</p>
<p>169,439 Miles  <b>Diesel, Manual, 4x4</b>  <b>\$21,900</b></p> <p>'08 Ram 3500 SLT          6.7L Cummins Diesel, 4x4, 6 Spd Manual, Mega Cab, SRW, Cloth Interior</p>	<p>Miles  <b>4x4</b>  <b>\$8,900</b></p> <p>'06 Ram 1500 Night Runner          5.7L V8 Hemi, 4x4, Gas, Auto, Cloth Interior, 2 Dr, Night Runner Edition</p>	<p>109,376 Miles  <b>5-7L Hemi - 4x4</b>  <b>\$12,900</b></p> <p>'10 Dodge Ram 1500          5.7L V8 Hemi Engine, 4x4, Auto, Quad Cab, Cloth Interior</p>	<p>104,356 Miles  <b>4x4</b>  <b>\$10,900</b></p> <p>'08 Dodge Dakota Laramie          4.7L V8 Magnum, 4x4, Auto, Gas, Crew Cab, Leather Interior</p>	<p>138,741 Miles  <b>4x4</b>  <b>\$9,900</b></p> <p>'09 Ford Ranger XLT          4.0L 6 Cyl, 4x4, Automatic, Super Cab, Cloth Interior, Cold Air</p>	<p>110,777 Miles  <b>AWD, Navigation</b>  <b>\$19,900</b></p> <p>'11 Cadillac Escalade EXT          6.2L 8 Cyl, AWD, Gas, Auto, Sunroof, Leather, Camera, Navigation, DVD</p>

**Warranty • 319-696-2981 • Warranty • www.rsautosalesinc.com • Warranty • 319-696-2981 • Warranty • 319-696-2981**



# Public Auction

## Max Moore Seller

2525 Utah St., Russell, IA 50238

Saturday, September 9th, 2023 10:00 AM



Driving Directions: approx. 14 miles south of Chariton Iowa on HWY 14 to the Millerton Iowa corner, then 2 1/2 miles east of Millerton to 165 Ave. (New York corner), then 2 miles north to Utah St., then west on Utah St. to the end of the road.

**10:00 AM Misc Smalls, Primitive & Smaller Equipment:**

Ice saws; brush axes; galvanized cans; well pumps; hand sickle grinder; John Deere 112 lawn tractor, rough; John Deere tractor mower with loader, rough; semi-reefer door; Yacht single-axle boat trailer; aluminum headache rack; steel trailer frames; several water tanks, saddle tanks; John Deere #9 PTO sickle bar mower; 4-section John Deere 3PT rotary hull; New Idea steel-wheel side delivery rake; 18' pull-type harrow-gator; 28' orbital drive 6" auger; 3PT boom sprayer, pump & tank; wooden feed bunk; metal & plastic feed bunk; floor jack; pallet jack; 6-section harrow & cart, rough; end gate seeder with orbital drive; bale movers; 3PT calf carrier

The following items sell live & Simulcast live commencing @ 12:30pm.

Go to Don Wagner Auction company LLC to register for online bidding. Phone Bids Welcome! No buyer premium on on-line purchases.

**Livestock Equipment:**

(2) Elk River creep feeders; My-D-Han-D cake feeder; wheeled creep feeder with creep gates, sharp; (2) green field gates; single cattle panel; (4) MFA cattle panels; Danuser orbital drive digger with 16" bit; 12" bit for above digger; iron home-built stand for digger; 25' bale conveyer with electric motor

**Tillage Equipment:**

IH 550 5-bottom plow; John Deere 4x16" plow; Big Ox 7-shank V ripper; John Deere BWA 18' tandem disc; 20' Massey Ferguson 820 disc with heavy harrow bar, extra nice; Kent 20' disc-o-vator with heavy harrow bar; Kent 18 1/2' Hydro Cultivator; Nobel 6-row rear mount row cultivator

**Misc Equipment:**

Single-axle dual-wheeled 21' water wagon with 8' goose neck with platform and 3' drop rear platform; several sheets of near-new bin steel, enough to make 30' circle 3-tiers high, sells with several feet of flexible aeration tubes; 500-gallon fuel barrel with pump, 1500-gallon aviation tank with pump; 3PT bale un-roller; John Deere # 450 hydraulic push manure spreader; Gehl # 55 grinder mixer, screens, kept inside

**Haying Equipment:**

NH # 67 hay liner square baler, kept inside; Vermeer # 605F round baler, kept inside; shop-built 8-bale gooseneck hay trailer; 10-wheel Frontier V rake; 8-wheel Vicon 3PT V rake

**Grain Handling Equipment:**

Dakon gravity box on John Deere gear; E-Z Flow gravity box on E-Z Flow gear; Heider galvanized gravity box on Heider gear with Heider side auger and Sur Loc roll-tarp; Coop tandem fertilizer cart, used as a grain cart; 61'x8" Westfield auger with swing hooper; 61'x8" Westfield auger

**Drill, Combine & Heads:**

750 John Deere drill, 8" spacing, home-made tarp, grass seed boxes, Kelderman hydraulic markers, stored inside; John Deere 6620 diesel combine, hydrostat, turbo, shows 2,088 hours, clean machine, stored inside, sn: 354958H; John Deere # 920 grain table, plastic fingered reel, stored inside, sn: 670786; John Deere 6 row 30" corn head, new stripper plates, chains & gears, stored inside, sn: 1108H; Kelderman corn reel & all hardware

**Tractor:**

John Deere 4630 tractor, quad range, hours unknown, 18.4x38" rubber, front fuel tank, long axles, sn: 21212R, axle mount duals to sell separately; pallet of (4) front pads & rear wheel weights to sell separately

majority of above equipment although older has had a good home and well maintained

**Consigned by others:**

Ford TW-25 MFWD tractor, 18.4x38" rear rubber, front weights, rear wheel weights, front fenders, shows 6,980 hours; Ford TW-15 tractor, 2-wheel drive, shows 5,628 hours, inside rear wheel weights, more information on these 2 pieces later on our website; Farm King 9' 3point blade, with angle and tilt cylinders; Flat top John Deere fenders fit a 4010 John Deere Tractor

2018 John Deere 1025R 4-wheel drive diesel lawn tractor, 64 + hours, sells with belly mower; also selling John Deere quick hitch & John Deere Frontier 3 PT rototiller (never used), more pictures soon on the website



See more at:  
www.donwagnerauction.com

Don Wagner, 641.931.6832  
DonaldWagner44@gmail.com

Terms: Cash, check or credit cards. No items will be removed until settled for. Sellers or auction company are not responsible for accidents, errors in listings or lost items. Announcements made day of sale take precedence over any printed matter. When registering for a buyer number proper I.D. will be required.

### PETS

**PUPPIES:** Farm Raised, Mother AKC Registered German Shepherd, Father Most Likely A Lab, Ready To Go September 3rd, \$50. Fayette, MO. 660-728-2187 9-15

**FOR SALE:** Apple Head Chihuahua, 4 Males Left, \$600. Will Meet, Will Be Very Small Dogs. 641-919-1471 9-1

**FOR SALE:** English Pointers, 8 Wks Old, Unreal Pedigree, NFTRA 57 Champions, Field Trail 15 HOF's, \$600. 573-228-1120 9-15

# CRP SEED MIXES

## NOW SELLING CRP MIXES FOR FALL SEEDING

Iowa's Longest Running Grower & Supplier of CRP Seed Mixes Since 1987

**641-766-6790**

800-582-2788 Or 800-Lucas88  
john@prairieseedsfarms.com



The Cover Crop, CRP And Prairie Experts  
CRP MIXES • WILDFLOWERS • PRAIRIE GRASSES  
CUSTOM SEEDING • SEEDING EQUIPMENT RENTAL

**150 Acres!** **ESTATE AUCTION** **No Reserve**

# LAND & PERSONAL PROPERTY

Saturday, September 9, 2023 • 10 A.M.

Location: 2683 205th St. • Afton, IA 50830

Directions: From intersection of Hwy 34 and Hwy 169 at Afton, Iowa go south on 169 to E. Filmore. Go east on Filmore to High School Drive (turns into Pheasant Ave) Stay on blacktop until 205th St., then east 1/8 mile. Watch for signs

**FARM LOCATION: 2683 205th St., Afton, IA Union Twp - Sec 25, 26, Union County Iowa**

Taxable Acres: 150 Acres

Avg CSR 2: 55.3

Net Taxes: \$2,811.97

Beacon Parcels: 0726400007, 0726200006, 0726200005,

0725100005, 0725300001

FSA Office - Corning, IA - 641-322-4240

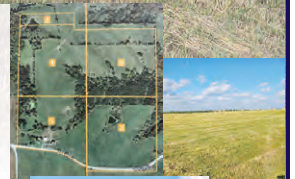
Farm #4018 Tract #3203

**FARM DESCRIPTION:** Gentle rolling pasture land in the heart of Union County. Fairly open ridges with some tillable potentials (107 acres potentially). Several ponds. Balance in timber and wooded areas. An uninhabited farm house and 2 metal buildings set at SW corner of farm.

**CONDITIONS:** Sale is subject to easements, covenants and leases. No current leases believed to be in place. No warranties or guarantees by seller or Todd Crill Auctions, LLC. Farm is being sold with NO RESERVE! Each bidder is responsible for their own inspection, inquiry and due diligence concerning the property. Existing home and buildings sell with the farm. Inspection of farm is allowed by contacting Auction Co.

**TERMS/CLOSING/POSSESSION:** The Miller Farm will be sold as one individual tract as a multiplier of 150+/- acres times the money per acre bid to the highest bidder. Bidding is not contingent on buyers financing. At the conclusion of Auction winning buyer will enter into a contract to purchase and make a 10% earnest money deposit to Nielsen Law, P.C./Todd G. Nielsen, Attorney, Creston, Iowa. A closing date and possession will be announced at time of auction. The balance of purchase price will be payable at closing. Sellers will provide a current abstract of title.

**Also selling: Livestock Trailer • Pickup / Cars 4 Wheeler / Lawnmower / Tractor-Loader Livestock Equipment / Show and Grooming Misc. • Old Equipment / Tools / Misc.**



*Auctioneer Comments: The potential is here! Currently pasture, but some acres could go to row crop or hay! Building site! or Sites? Timber and recreation! Take a good look at this one! Few tools, Livestock trailer and misc. sell first at 10AM. Land will sell at 12 Noon! Hope to see you at the auction. - Todd*

## The Eldon Miller Estate

### John Miller, Executor

Auction conducted by Todd Crill Auctions, LLC, Creston, IA  
Todd Crill, Auctioneer - 712-621-1453

Auctioneers: Matt Johnston • Nathan Ramsey

Michelle Crill, Auction Coordinator - 641-745-9223

www.toddcrillauctions.com or follow us on facebook

PORTABLE RESTROOM • LUNCH ON GROUNDS


Terms: Cash or good check. Mastercard and Visa credit cards welcome.

\*\*Auction Company not responsible for accidents, thefts or fire.\*\*



# MASTER BUILDERS

## Post Frame Buildings



<b>24 x 30 x 10</b>	<b>30 x 40 x 10</b>
1-10x8 Overhead Door	1-10x8 Overhead Door
1 Walkout Door	1 Walkout Door
Concrete Floors	Concrete Floors
<b>\$29,000</b>	<b>\$33,000</b>

All Sizes On Sale  
Price Includes All Tax and Labor

**Call (641)295-4970 • (641)295-4467**  
Customers are responsible for all permits.

# WANTED

## Standing Timber

Buying Walnut, Oak and Maple  
20 Years In The Business  
I Pay Before I Cut  
RJ Lumber LLC • Raymond Yutzky  
VM: 641-722-3348



**1995 Springer Bad Boy**  
Vance & Hines Exh.  
Very Clean!  
Rare Bike!

**NO DOC FEES!** **\$10,995**

C&C Cycle  
Chariton, IA • 888-475-2243  
[www.cc-cycle.com](http://www.cc-cycle.com)



**PLUS QUALITY PLUS FEEDS**

# CALF MEDIC

20 GRAM AUREOMYCIN

## EFFECTIVE CHLORTETRACYCLINE DELIVERY WITH ADDITIONAL VITAMINS & TRACE MINERALS TO BOOST IMMUNE FUNCTION

CAUTION: Federal law restricts medicated feed containing this veterinary feed directive (VFD) drug to use by or on the order of a licensed veterinarian.

**2033 Locust Street, Saint Paul, IA 52657**  
(319) 469 - 3167 | [www.qualityplusfeedinc.com](http://www.qualityplusfeedinc.com)



# KARS, INC

OF PLEASANT HILL

5701 E. University • Pleasant Hill, IA  
**515-564-0937**  
[www.kars-inc.com](http://www.kars-inc.com)

 <p><b>2017 Silverado K1500 LT</b> 4x4, 5.3 V8, Auto, Full Power, CD/HD, MP3, WiFi Hotspot, 120K, <b>\$23,995</b></p>	 <p><b>2019 Ford Expedition MAX Limited</b> Full Power, Heated &amp; Cooled Leather, Sunroof, 3rd Row Seating, 114K, <b>\$36,995</b></p>	 <p><b>2017 Ram 1500 SLT</b> Crew Cab, 3.6 V6, Auto, Loaded, Backup Camera, 94K, Bed Cover, <b>\$24,995</b></p>	 <p><b>Low Miles</b> <b>2015 Ram 2500 ST, 4WD, Crew Cab, 5.7 Hemi, Auto, Power Windows &amp; Locks, Heated Mirrors, 90K, \$29,900</b></p>	 <p><b>2018 Chevy Silverado K1500 LTZ, 4WD, Crew Cab, 5.3 V8, Auto, Loaded, Leather, Full Power, Bed Cover, Nicel 144K, \$25,995</b></p>
 <p><b>2017 Jeep Wrangler Rubicon HARD ROCK</b> 6 Cyl, 4x4, Full Power, MP3/Satellite, 145K, <b>\$27,995</b></p>	 <p><b>Low Miles</b> <b>2014 GMC Sierra K2500HD</b> 4x4, 6.0 V8, Work Truck, Air, Tilt &amp; Cruise, 59K, <b>\$27,995</b></p>	 <p><b>2019 Buick Encore Essence</b> AWD, Loaded, Leather, Full Power, 98K <b>\$17,995</b></p>	 <p><b>2017 Dodge Challenger R/T</b> 5.7 Hemi, Auto, Full Power, MP3, Keyless Entry &amp; Start, 74K, <b>\$28,995</b></p>	 <p><b>Low Miles</b> <b>2008 Ford Fusion SEL</b> V6, Auto, Loaded, Leather, Sunroof, Low Miles, 87K, <b>\$25,995</b></p>
 <p><b>2018 Jeep Compass Trailhawk</b> Full Power, Leather, MP3, Satellite Radio, 114K, <b>\$17,995</b></p>	 <p><b>2019 GMC Canyon SLT</b> Crew Cab, 6 Cyl, Auto, Full Power, Heated Front Seats, Leather, 81K, <b>\$28,995</b></p>	 <p><b>2015 Chevy Tahoe K1500 LTZ, 4WD, 5.3 V8, Loaded, Heated &amp; Cooled Leather, 3rd Row Seating, Keyless Entry &amp; Start, 142K, \$24,695</b></p>	 <p><b>2014 Grand Cherokee Limited</b> 4WD, V6, Loaded, Leather, Sunroof, Heated Seats, 99K, <b>\$19,995</b></p>	 <p><b>2018 Chrysler Pacifica Touring Plus</b> Full Power, Power 3rd &amp; 4th Doors/Sliders, 91K Miles, <b>\$19,995</b></p>

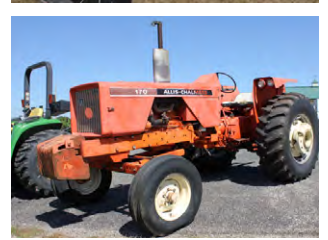
# Fall Farmer's Machinery Consignment Auction

Featuring Late Model Combines, Grain Heads & Carts, Tractors, Grain Handling Equipment, Planting & Tillage Equip., Semi Trucks, Grain Trucks, Trailers, Lawn & Garden, Shop Tools

## Saturday, September 9 - 10:00 am

— Live Online Bidding Will Be Available —

Younger Auction Gallery, 312 E. South Hills Dr., Maryville, MO



### TRACTORS & ATTACHMENTS

- 2012 John Deere 9410R, 4700 hrs., Green Star Ready, 18 spd. Powershift, 5 SCV's, Hydraulic Pump Standard
- 2018 New Holland T4.75 Tractor with Loader and Bucket with Skidsteer Mounts, 545 Hours, MFWD, 2 SCV's, 540pto
- John Deere 3038E Tractor, Open Station, MFWD, 3pt, 2scv's, 551 Hours, 305 Loader With Bucket, SN:1LU3038ETCH410033
- John Deere 3320 Tractor, Cab Heat, MFWD, Wheel Weights, Quick Tach, 3pt, 540pto, 1scv, with 300CX Loader, NICE
- 1978 Allis Chalmers 185, WF, 4890 Hours, 2wd, 3pt, Radio, LED Lights, 2 SCV's, Fair Paint, SN:18512569
- Massey Ferguson 175, Diesel, New Clutch, Pressure Plate, Power Steering Pump and Hydraulic Pump 2 Years Ago, Multi Power Transmission
- John Deere 8640 4WD Tractor, 3pt, 5689 Hours, Duals, 20.8-38 Tires @ 60%, 2scv's, AC
- Allis Chalmers 170 Gas, Runs Good, Slide Adjust Wheels, 10 Front Weights, Like New Front Rubber, 80% Rear Rubber, 3603 Hours, 2 Scv's, 3pt, Drawbar, Wheel Weights, Good Tin Work
- IHC 684 Tractor, 4 Cyl Diesel, 909 Original Hours, 540 PTO, 2 SCVS, 2wd, With 2250 Loader and Bucket
- AC WD Tractor, Runs, 14.9-28 Rear Tires @ 90%, 5.50-16 Tires @ 50%, Snap Coupler, Straight Tin Work, Good Paint

- Frontier 3pt Blade, LIKE NEW, Manual Adjust, Cat II, 8' Blade,
- Frontier Pallet Forks, LIKE NEW, Global Attachment For Loader
- Workmaster 800 Tractor Loader, 5' Bucket, Brackets for 70 Series Case Tractor
- Frontier 3pt Tiller, 540 pto
- Country Line 3pt Box Blade
- Grapple Rock Bucket for Loader, Global Attachment, Like New
- Pallet Fork For JD Loader, Global Attachments
- 8' Danus Blade, Yellow In Color

### HARVEST AND GRAIN HANDLING EQUIPMENT

- Case International 1640, Cummins Engine; Bean & Corn Head
- 1989 John Deere 6620 Titan II Sidehill Combine, RWA, New Water Pump Last Year, Yield Monitor, 8815 Engine Hours
- 2000 John Deere 693 Corn Head, 30" Rows
- John Deere 920F Platform, Cray Air Reel, Full Finger
- John Deere 9400 Combine, 5811 E 3970 S Hours, New Concave and Cylinder Bars 2 Years Ago, 2wd, 6.8L Engine, Good AC, New Batteries Last Fall, LED Stadium Lights
- John Deere 643 Corn Head, Newer Deck Plates and Snapping Rollers, New Gathering Chains and Sprockets Two Years Ago, Good Tin Work
- John Deere 920F Platform, All New Sections and Guards Last Year

- 672 Easy Trail Head Cart, 25', Good Tires
- 1988 John Deere 6620 Titan II, Heavy Rear Axle, Front Axle Extension, 5413 Hours, New Concaves and Rasp Bars With Approx. 500 Acres, New Chopper Knives, LED Lights, New Alternator In 2021, Drive Tires @ 50%, Steer Tires @ 25%
- Demco Posi-Flow 800 Auger Wagon, Like New Condition, Manual Tarp, 1000pto, 30.5-32 Turf Tires
- John Deere 38 2 Row 30" Silage Chopper, 1 New Tire, 1 Good Tire, Stored Inside, Hydraulic Adjust Spout, 1000 PTO, Needs New Hoses, Stored Inside, Not Used Lately
- Kelderman Corn Reel, Fits JD 893 Corn Head
- 30" Truck Auger, Used 3 Times, Older, 540pto
- Rem 2500 Grain Vac, 1000pto, 214 Hours, Augers Show Some Where, Good Tires, 2 Rubber Hoses, 2 Solid Steel Pipe, 2 Steel Flex Pipe, One Hand Held End, 1 Floor Attachments With Wheels, Manual Fold, SN:RM25008034
- Parker 400bu Twin Door Single Compartment Gravity Wagon, 16.5x16 Floater Tires, Heavy Running Gear
- Parker 300bu Single Door Gravity Wagon, 11L-16 Tires
- Kuker 365bu Plus Extensions Gravity Wagon, With Stabilizer

- legs, Used For Auger Wagon Dump Pit At Bin Site, 111-15 Tires, Good Running Gear
- Parker 250bu Gravity Wagon, 12.5 R15 Tires, Good Gear
- Heider Manufacturing Auger Wagon, Floor Rusted Out
- Large Earth Compactor for Excavator
- Hobart Welder, 4500 W Generator, 145 Amp, DC Welder, NEW
- 10' Yellow Box Blade, Good Tires, Could Be Set Up To Tilt, Cutting Edge Bent
- Sweepster Brand Pavement Sweeper, Hydraulic Ran, Needs Hitch Components
- Backhoe

### PLANTING & SPRAYING EQUIPMENT

- 2010 John Deere 1790 16/31 Planter, Pneumatic Down Force, True Vee Openers and scrapers and Parallel Arms and Bushings New 1000 Acres Ago, New Bushings In Closing Wheels, New Wing Tires, 2pt Hitch, Spoke Gauge Wheels
- 31 No Till Culters, 500-700 Acres, JD Factory
- John Deere 2410c NH3 Bar, 15 Knife, 5 Section, Greenstar Ready, NH3 Pump, Needs New Closing Wheel, Dalton Shanks
- Kinze 2200 Planter, 12 Row 30", No Monitor, Has Bean Units and Plates, Spoked Closing Wheels, Insecticide Boxes
- Pallet of 12 Row Cleaners

- Pallet of 12 Coulters
- Hitch To Pull Two 15' Box Drills in Tandem, with Stabilizer Bars, Green in Color
- Land Pride APS 1572 Drill, 3pt, NEW
- John Deere 7000 Planter, 30" 15" Splitter, Pull Type
- 3pt, Sprayer, 30' Booms, Like New
- Certified Equipment Mfg. Sprayer, 400 Gallon SS Tank, Boomless Jet Nozzle, Good 11-15 Tires, Pull Type, Has PTO Pump, Hand Sprayer

### TILLAGE

- Sunflower 1436 Disk, Used Less Than 100 Acres, 36', Rolling Basket, LED Flasher, 12.5L-15 Flotation Tires, Caster Gauge Wheels On Wings, Like New, Hydraulic Leveling, SN:AGCS14360FZ100252\*27
- JD 2100 Ripper, 9 Shank, Less Than 1000 Acres, Like New
- Case IH 345 True Tandem Disk, 28', Agronomic Design, Good Shape, Good Blades
- 3pt Lister, Blue, Large Shovels
- John Deere 14' Disk, Tires Hold Air, 17" Blades, Lift Cylinder

### HAY EQUIPMENT

- JD 450 Pull Type Sickle Bar Mower, Good Paint and Tires, 540pto, Extra Sickle Bar
- Vermeer 605m Baler, Net Wrap, 16,000 Bales
- 2010 John Deere 568 Mega Wide Plus Baler with Monitor, 10,500 Bales, Belts @ 40-50%, 1000 Bales On New Pickup

Head and Chains and Sprockets This Year, New PTO and Clutch 400 Bales Ago

- Vermeer 605c Baler, String Tie, Has Book, 540pto, Good Belts
- New Holland 850 Chain Baler, 540pto, String Tie, 5x5, Works
- 6 Bale Hay Trailer, Bumper Hitch, Older, 16" Tires
- John Deere 350 Sickle Bar Mower, 3pt, 540pto, 9' Bar
- 7' IHC 1300 Sickle Bar Mower, New Sections Last Year
- New Holland 56 Bar Rake, Tongue Mount, Used This Year

### SKIDLOADER & ATTACHMENTS

- 2004 Case 70xt Skid Loader, Wheeled, Hour Meter Doesn't Work, Runs Well, With 66" Tooth Bucket
- Titan Attachments Adapter From Global Attachment To Skid Loader, LIKE NEW
- CL Fab Tree Puller, LIKE NEW, Headache Rack, Pioneer Hose Ends, Global Attachment Mounts For Loader
- Receiver Hitch Attachments For Skid Loader
- Receiver Hitch Attachments For Skid Loader

### PASTURE & FENCING

- 6' King Kutter Brush Cutter
- Rhino 13' Turf Flex Mower, Foam Filled Tires
- Bush Hog ATH720 Finish Mower, 540pto, 72" Cut, Cat I, 4 Caster Gauge Wheels
- Field General Wheel Mower, 540pt, 6', Cat I



Mark Younger, Auctioneer  
**660-541-1977**  
 Email: [yac@youngerauction.com](mailto:yac@youngerauction.com)

For complete listings and more pictures visit our website

**WWW.YOUNGERAUCTION.COM**