

QUALITY PLUS FEEDS



17% Rabbit Pellet
COMPLETE BALANCED
DIET FOR ALL LIFE-STAGES

- Chelated Trace Minerals & Digestive Support to Naturally Promote Reproduction & Proper Immune Function
- Fixed Formulation for Consistent Performance
- 100% Pellet to Eliminate Sorting or Selective Eating

2033 Locust Street, Saint Paul, IA 52657
(319) 469-3167 | www.qualityplusfeedinc.com

Looking to Sell Your Farm or Construction Equipment?

- All Makes and models - Loader Tractors, MFWD Tractors, 2wd Tractors, 4wd Tractors
- Kinze Planters - Split row & 30" planters
- Later Model John Deere & CIH Platforms, Corn heads
- Grain Carts
- Combines, 90s models and newer
- Skid Steers
- Excavators
- Wheel Loaders

One piece or a whole line of farm or construction equipment. Let us know what you have.

Shay 660-605-0839 Justin 660-605-2346

Band Seg Equipmentsales.com
GALLATIN | MISSOURI

Vol. 20 No. 45
 November 11, 2022

f FREE Every Friday
www.hawkeyetrader.com

YOUR HAWKEYE TRADER

Phone: 641-675-3971 • Fax: 888-203-9720 • E-Mail: ads@hawkeyetrader.com

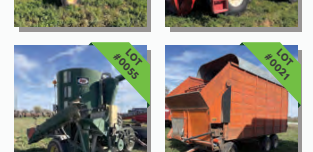
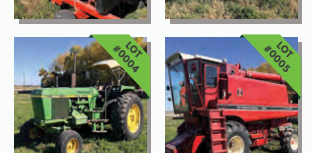
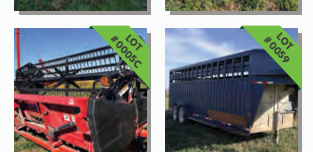
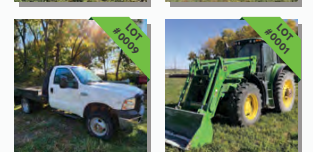
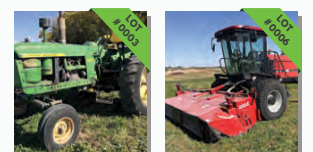
DreamDirt

JANE & "LATE" JOHN CAMP ESTATE AUCTION

LIVE & ONLINE AUCTION

1168 225TH AVE. OSCEOLA, IA

SATURDAY, NOVEMBER 19, 2022 @ 10 AM



AUCTION LOTS:

6150M John Deere FWA Tractor & H360 Loader • Bobcat S300 Skidloader • John Deere 4010 Tractor • John Deere 4040 Powershift Tractor • International 1460 Axial Flow Combine • International 1044 4 Row Corn Head • 1020 IH Platform 15' • Unverfurth Head Cart • Case IH WDX 1701 Windrower • Case IH 8910 FWA Tractor • Hesston 5456A AGCO Baler • 2006 Ford F-350 1 Ton Dually Pickup • H&S 370 Manure Spreader • John Deere A Tractor • Farmall 450 Tractor • Case IH 4300 Field Cultivator • Great Plains Soil Conditioner • International 496 Disc • Fuerst 3 Section Harrow • Caldwell & Sons Auger Wagon • Kory Gravity Wagon • International 110 Silage Wagon • Silage Wagon • Bush Hog Wagon • Barge Box Wagon • Gnuse Silage Wagon • Gnuse Silage Wagon on Westendorf Gear. 14x7x7 • AGCO 4344 14 Wheel V Rake • S.I. Feeder Hay Feeder • IH Field Cultivator • Kewanee 7' Blade • 2 Bottom Plow • International 12' Disc • IH 1100 Sickle Bar Mower • New Holland 520 Manure Spreader • New Holland 56 Bar Rake • Field Cultivator • Noble Drag Harrow on Cart • Steel Wheeled 2 Bottom Plow • IH 510 4 Bottom Plow • Dunham Lehr DL34 Disc • International 300 Rotary Hoe • Kewanee Elevator • Roller Mill • Bale Spear • Bearcat Roller Mill • Tank • 400 Arts-Way Grinder Mixer • 475 Arts-way Feed Grinder • 30' Portable Feed Bunk • Wheatcraft 10x62 Auger • 2002 Trailmann Livestock Trailer • Pierson Livestock Portable Chute • 4 Bale Trailer • Homemade 6 Bale Hay Trailer • 8 Bale Hay Trailer • John Deere 1760 Max Emerge Plus Planter • Case IH 881 Chopper • International 2 Row Corn Chopper Head • 3 Row Corn Chopper Head • 3 Pt Post Hole Auger • Allis Chalmers WD Tractor • Ferguson Tractor • Polaris Ranger 500 Side by Side • Polaris Sportsman SP570 EFI 4 Wheeler • Polaris Sportsman 550 EFI 4 Wheeler • International 606 Utility Tractor • Farmall 350 Tractor • Schuler 220 BF Feedwagon • John Deere HX15 Batwing Bush Mower • Grapple • DMI Grain Wagon • Farmall M

Tom Bradley | (515) 202-7687 | Tom@DreamDirt.com

Jeff Webb | (641) 414-3000 Chad Nelson | (641) 414-8011

MORE PHOTOS ONLINE!

BID ONLINE
FARMBIDACTIONS.COM



Upcoming Auctions



Krause Farm Retirement Online Auction
Hecla, SD | Closes: November 15 at 10AM

Marshall County, IA Land Auction - 143± Acres, 2 Tracts
Marshalltown, IA | November 15 at 11AM

Spurley Dairy Farm Retirement Cattle Online Auction
Linden, WI | Closes: November 15 at 1PM

Ringgold County, IA Land & Acreage Online Auction
Kellerton, IA | Closes: November 15 at 1PM

McLeod County, MN Land Online Auction - 44± Acres
Silver Lake, MN | Closes: November 16 at 1PM

Kirchoff Farm Retirement Auction
Waverly, IA | November 16 at 10AM

Clinton County, IA Land & Acreage Online Auction
Camanche, IA | Closes: November 16 at 1PM

Blount Revocable Living Trust Equipment Online Auction
Camanche, IA | Closes: November 16 at 3PM

Fargo Powdercoating Retirement Online Auction
Fargo, ND | Closes: November 16 at 7PM

Eden Farm Equipment Auction
Mason City, IA | November 17 at 10AM

Des Moines River Farm LLC Land Auction - 520± Acres
Avoca, MN | November 17 at 10AM

LaJoie Trucking Equipment Reduction Online Auction
Ray, ND | Closes: November 17 at 10AM

Cass County, ND Land Online Auction - 183± Acres
Gardner, ND | Closes: November 17 at 12PM

Laramie County, WY Land Online Auction - 560± Acres
Carpenter, WY | Closes: November 18 at 10AM MST

Fayette County, IA Land Online Auction - 155± Acres
Oelwein, IA | Closes: November 18 at 1PM

Noot Equipment Online Auction
Marion, ND | Closes: November 21 at 10AM

Melroe Farm Retirement Online Auction
Gwinner, ND | Closes: November 21 at 12PM

Stutsman & Foster County, ND Land Auction - 754± Acres
Carrington, ND | November 22 at 10AM

Online Hay Auction - Quality Tested
Steffes Group, Litchfield, MN | Closes: November 22 at 12PM

Steffes Online Auction - 11/23
All Locations | Closes: November 23 at 10AM

McLeod County, MN Land Online Auction - 366± Acres
Hutchinson, MN | Closes: November 23 at 1PM

Barnes County, ND Land Online Auction - 160± Acres
Tower City, ND | Closes: November 29 at 10AM

Arndt's Tire Shop Online Auction
Chokio, MN | Closes: November 29 at 10AM

More auctions listed at SteffesGroup.com

319.385.2000 | Steffes Group, Inc., 2245 East Bluegrass Road, Mt. Pleasant, IA

20' & 40' Storage Containers
Starting at \$1,895
For Sale or Rent

Dry & Mouse Proof

ABC Portable Storage
Delivery Available
563-299-2901

TINY HOMES

WE GOTTEM

573-881-3283

AG RELATED

WANTED: New Leader 3020 Lime Box, 16 Or 17 Ft. With Belt Over Chain Conveyor To Mount On Tandem Truck.
641-990-1249 11-18

FOR SALE: JD 6620 Combine, Turbo And Hydrostat, Good Condition But Noise In Motor, Make Offer; JD 6600 Late Model, Runs Out Good; 16 Ft. Bean Head On Cart, Poly And Stainless Steel; 1968 Dodge 600 With Bed And Hoist, Fenders Open Out. Milton, IA.
515-419-1232 11-18

FOR SALE: Ford 3000 Gas, Live Power, Power Steering, In Good Condition. \$4,500.
660-341-8089 TFN

5-STAR SPRAY FOAM INC.
BROOKLYN MONTEZUMA

WE NOW OFFER CONCRETE RAISING & LEVELING

Open Cell & Closed Cell Foam
Call or Email Craig
641-328-4163
fivestarsprayfoam@gmail.com
NEW CONSTRUCTION, REMODELS, POLE BARNs
CRAWL SPACES, ATTICS & MORE
Free Estimates • Fully Insured
WWW.5STARSPRAYFOAM.COM

DES MOINES DIESEL INC

Servicing All Your Diesel Fuel Injection Needs

Pumps, Nozzles & Turbos

Ag & Truck Performance Parts

1-800-475-6086 • 515-265-7318
3211 Delaware Ave Des Moines, IA 50313
1 Blk E. of the ADM Soybean Plant

FOR SALE: Bale Feeder Wagon, \$1,500; Front And Rear Tractor Tires, 4-18-30; 20+ Head Dorper Katadin May Ewe Lambs, \$275; Small Square Alfalfa Hay. 2 Miles North Of Casey's. 20843 200 St. Sigourney, IA 11-11

FOR SALE: Ford IH JD Tractors; Have Loaders, Blades, Mowers, Disc, Plows, Spring Tooth, Lots Of Other Equipment. Pomeroy, IA. No Texts.
712-299-6608 11-11

FOR SALE: 24 Ft x 5 Ft Free-Standing Cattle Panels, Weighing 600 Lbs Each, Fastener Chains Included. Located in Troy, IA.
641-680-0892 TFN

BUYERS & SELLERS WANTED

NEXT AUCTION | SAT., DECEMBER 17, 2022



join us on facebook!

2022 CONSIGNMENT AUCTION

Shay Esbeck 660-605-0839 | Barney Esbeck 660-605-0841 | Justin Harlow 660-605-2346

HAULING AVAILABLE • LIVE & ONLINE BIDDING • NATIONWIDE ADVERTISING • CONSIGN NOW!

BandSequipmentsales.com

GALLATIN | MISSOURI

BUY | SELL | TRADE | EVERY DAY

Want to Buy Walnut

SERVING ALL OF IOWA

HINDMAN LOGGING

641-485-9071

Bonded & Insured

Timber Paid in Full Before Cutting



Specializing in Roll Forming

• Pole Barn Packages

• Re-Roofing

Full Line of Building Materials



1187 Orange Ave, Kalona

319-646-1103 vm

Bring In Your Plans for a Free Estimate

FOR SALE: Ford 8N, Good Condition, \$1,800. 660-341-8089 TFN

AUTOMOTIVE

FOR SALE: 2018 Silverado 1500 LT 4x4 Crew Cab, Grill Guard, New Tires, Black Interior Exterior, 71K \$36,500. Unionville. 660-730-0843 11-18

FOR SALE: 1971 Chevy Chevelle 350 Auto, Black Inside And Out, Nice Paint, New Tires. CARGAR Wheels, Cruise Control. \$31,500. Info. 573-248-6111 11-18

FOR SALE: 2007 Silverado LT, 4x4, Crew Cab, New Body Style 5000 On Rebuilt Engine, 175K, Silver \$14,500. Unionville. 660-730-0843 11-18

LIVESTOCK

FOR SALE: Bumper Hitch Stock Trailer, 6 Ft. X 18 Ft., New Tires And Rims, New Brakes And Drums, Bearings Repacked, All New Wiring, LED Lights, Good Title, \$6,400 OBO. 641-919-9117 11-18

Call Dean or Tim to Order Your New Polaris Today!



2022 POLARIS RANGER 1000

Slayton POLARIS

10456 State Route B, Downing, MO 63536

slaytonpolaris.com

660-328-6627

BARN RESTORATION

Specializing in Barn & Pole Barn Repair and Restoration



See more restorations!

WAGLER BUILDERS

(641) 777-5000 • john@waglerbuilders.com @waglerbuilders



2016 Wide Glide

Vance & Hines Exhaust, Sissy Bar & Pad, Only 7100 Miles! WOW!!

NO DOC FEES!

\$13,995

C&C Cycle Chariton, IA • 888-475-2243

www.cc-cycle.com

scan for details



ONLINE STEFFES AUCTIONS

Whenever you're ready to sell, or looking to buy, we're here with your opportunity.

THIS AUCTION CLOSING: NOVEMBER 23

Our online auctions allow successful bidding anytime, anywhere, & any place!

2012 JOHN DEERE 9510RT

East Grand Forks, MN



2010 JOHN DEERE 9630T

East Grand Forks, MN



2015 VERSATILE 550 DT

Hillsboro, ND



2012 CAT CHALLENGER MT645D

Dallas, IA



JOHN DEERE 4840

Milroy, MN



2015 FREIGHTLINER CASCADIA

West Fargo, ND



Visit our website for representative & consignor information, location, terms, lot listings & photos!

SteffesGroup.com



Scott Steffes ND81, MN14-51



We want to purchase & market your grain.



Buyers of Corn and Soybeans. Organic & Non-GMO Corn and Soybeans. Contracts Offered • Forward Pricing

Baring Elevator LLC

CONTACT US FOR PRICING

Baring, MO

660.892.4411

baringelevator.com

**Vermeer 605 N Balers,
Twin Rakes, Trailed Mowers,
Disc Mowers, Tedders,
Bale Processors**

DewEze Bale Beds

**Danhauser Posthole Diggers
& Posthole Drivers**

Hide-Away 5th Wheel Hitches

Flex Harrows

**Used Equipment
9000 Bale Processor**

Call Us For All Your Used Equipment Needs

Liebhart Sales, Inc
17546 Lacey Drive • New Boston, MO 63557
660-689-3406

**Annual After Harvest
Farm Machinery
Consignment Auction**

**Tama Co. Fairgrounds, 1217 175th St. Gladbrook, IA
Saturday, December 3rd, 2022 • 9:30 AM**

In order to have your Machinery considered for online bidding,
please contact us by Wednesday, November 16th.

Call Spanky at 319-269-4024 • Mandy at 641-485-2712
Visit spankyandsonsauction.com to look at pictures and get all the details

**Spanky & Sons
Auction**

David "Spanky" Boldt
319-269-4024
spankyandsonsauction.com
Like us on Facebook

Need Rebar?

Wholesale

A W Metal LLC
Metal Roofing Headquarters

641-664-3990
www.awmetal.net

New Harleys

**4.99% For 60 Months
And \$0 Down With
Qualified Credit!
Call Us Before You Buy!
NO DOC FEES!**

C&C Cycle
Chariton, IA • 888-475-2243
www.cc-cycle.com

OBERHOLTZER

TRAILER REPAIR

Specializing in Aluminum Hopper Trailers • Repair & Rebuild

We Install Tarps & Power Tarps

Timpte & Wilson Trailer Parts Available

660-341-6027 • 660-282-1012
3 Miles East of Gorin, MO on Route U

FOR SALE: 10 Outstanding Sim/Angus Bulls 14 Months Old Black, Polled. Paul Martin, Shelbina. 573-822-4216 11-18

BULLS FOR LEASE: Over 70 Registered Angus & Hereford To Choose From. 90 Day Lease \$900. Trucking Available At Extra Charge. Kingdom City, MO. 573-999-3197 TFN

MISC
J & J ROOFING & SIDING: Call For Your Roofing And Siding Needs. 641-638-2402 11-11

FOR SALE: Like New Mossberg 835 Shotgun Combo, Has Rifled Slug Barrel With Sights, Tapped For Scope, Shoots 3 1/2 Inch Shells, Camo In Color With Sling, \$500. 573-588-4518 11-11

FOR SALE: Lift Chair, Flex Steel, Near New, Medium Brown, Lady Used, \$674 Cash ONLY. Milo, IA 515-669-3838 11-11

LOOKING TO LIQUIDATE OR DID YOU JUST INHERIT STUFF: Let Me Help. On-Site Tag Sale Services. Personal Property And Collectible Consultation. Also Seeking Baseball Cards, Furniture, Comic Books, The Unusual, And Anything Of Value. Before Throwing Out Your Potentially Valuable Items, Contact Me. CAGA Certified. Nathan Lilley. 573-253-4159 TFN

**FOR SALE:
FALL REGISTERED
ANGUS BULLS**

We Are Selling Pick at the Farm

**Bulls Are Big, Stout & Slick
Black. Bulls Are the Most
Gentle We Have Ever Raised.
Most Are A.I. with Top EPD's,
Weights & Super Feet.**

**Pedigree & Quality
Second to None.**

First Come, First Serve!!

**Up to Date on Vaccinations
& Semen Tested**

\$4,000 for Pick

Terry Little

TL Ranch
13815 220th Ave
Monticello, MO 63457
Terry (573)470-0846
Marilynn (573)470-0847

AUCTION
SATURDAY, NOVEMBER 12, 2022 • 10 AM
1916 S. 18TH ST. (HWY 55) • CENTERVILLE, IOWA

ANTIQUES/COLLECTIBLES: 20+ Pieces of Nice Carnival Glass; 3 Sleepy Eye Pitchers; Pyrex; Set of 4 Jadite Bowls; Firinging; Set of Refrigerator Dishes; Shirley Temple Pitcher; Fenton; 1960's Toys=Fire Truck, Car Hauler, Roadster, JD Tractor & Implements; Doll House Furniture; 261=1960's & Up, Ironman Magazines; 77=1968 & up, Gas Engine Magazines; 148=1970 & up, Engineers & Engines Magazines; Croquet Set; Old Lufkin Tape Measure; 3 Sets of Old Doors; 1890's Mail Box; Falls City Deer Sign; Nice Pictures; Books; Doll Collection; Bell Collection; Owl Collection; Cook Book Collection; Burlap Sacks/Adv; Hawkeye Mugs; Pitcher/Bowl; Sets of China/Dishes; Primitives; Kitchen Items; 4 Victorian Chairs; 2 Marble Top Stands; 20 Nice Modern 3' to 5' Church Pews; Chairs; Wedding or Church Candelabrum; Trunk; Holiday Decorations; Library Table; School Bell; Sewing Machine; White Mountain Ice Cream Freezer; Wine Chiller; Pr of Steel Wheels; Costume Jewelry; + many more Collectibles;

FURNITURE, MISC., VAN: Chest of Drawers; Dressers; Air Conditioner; Dinette Set; End Tables; Small flat screen TV; Boat Motor; Harley Davidson Items including 2 used Jackets; Book Shelf; Glass Door Cabinet; Sofa; 2 Pc Sectional w/2 Recliners; Dishwasher; Abcircle Machine; Europro Steam Press; Brown Recliner; Foosball Table; 2 Trailers of Misc (many surprises); 2001 3500 Chev. Express 15 Passenger Van w/Cargo Box.

SPEND THE DAY WITH US! MANY ITEMS NOT LISTED.

PICTURES ON WEBSITE demryauction.com OR on Facebook

DEMRY AUCTION, LLC
641-856-6408 CENTERVILLE, IOWA
JANET DEMRY 641-895-4310
TOM DEMRY 641-895-2508 KRISTY DEMRY 641-895-2509
JUNIOR LAWSON 641-895-0037 RANDY MULAY 641-436-1521



AUCTION
SATURDAY, NOVEMBER 19, 2022 10:00 AM
SALE TO BE CONDUCTED AT THE PROPERTY LOCATED
334 N. SHERIDAN, OTTUMWA, IOWA
Auction Signs Will Be Posted

APPLIANCES, FURNITURE & HOUSEHOLD ITEMS: Like new GE stack washer/dryer; Whirlpool auto. washer & matching elec. dryer; Kenmore elec. range/oven; Hamilton Beach microwave; 2-pc. bedroom suite incl. full-size bed, mattress & box springs, bookcase headboard & triple dresser w/mirror; Full-size bed w/mattress & box springs; Round dining table w/6 barrel-style chairs; (2) Lazy Boy matching leather upholstered recliners; Coffee table & 2 matching end tables; Beautiful walnut grandfather clock; Handmade shelf clock; Round drum table; 4-shelf bookcase w/glass doors; Table & floor lamps; Blonde single-sided student desk; 3-sided curio cabinet; Baskets; Painted shelf; (2) Wooden trunks; Baby bed; Child's rocker; Corner shelf; TV stand; Microwave stand; Gun rack; Component stereo; Quilt racks; Stools; Shoe racks; Vanity stool; Asst. of pots, pans, dishes, toasters; Crystal ware; Large asst. of angel figurines; Asst. of chicken figurines; Floral arrangements; Large asst. of costume jewelry; Pictures & frames; Bedding, blankets & linens; Invalid walker; Horse blanket pins; Old war ration book; (2) Stone jars; Antique Coke pop cooler; Hand meat grinder; Coolers; Lawn chairs; Patio umbrella; Redwood picnic table w/benches; Large asst. of angel figurines; Asst. of chicken figurines; Floral arrangements; Pictures & frames; Bedding, blankets & linens; (7) 8' metal shelving units; Invalid walker; Port. Inogen oxygen unit; Invacare Platinum XL oxygen concentrator; Bicycle made for 2; Child's bicycle; Wood porch swing; (2) Wood Adirondack rockers.

TOOLS & EQUIPMENT: Snap-on 12-drawer toolbox; OTC heavy-duty 4,000-lb. engine hoist; Wilton vise; Craftsman 13" 5-spd. commercial drill press; Sears Craftsman 10" radial-arm saw; Stanley 3/4hp grinder w/stand; Chicago bench-mount drill press; Asst. of hand tools incl. ratchet wrenches & screwdrivers, hammers, crowbars; Air-powered bumper jack; Hydraulic floor jack; Asst. of garden hoses; Hoes, rakes, shovels, axes, brooms; Alum. dock plate & channel iron; Set - jack stands; Saw horses; Load binders & load locks; Alum. ramps; Drop cords & wooden stepladder; Asst. of meat hooks; Rolling shop light; Rag bucket; Troy-bilt self-propelled roto-tiller w/7hp Briggs engine; Toro gas-powered snowblower.

VEHICLES: 1952 Ford F100 pickup, complete restoration, flathead V8, 3-spd. transmission, shows 8,000 miles since restoration; 2017 Chrysler Pacifica van, full power, dual sliding doors, third row seating, leather interior, 84,540 miles, like new inside & out; 1995 Honda 1500 Goldwing Aspencade, fully dressed, 13,000 miles.

AUCTIONEER'S NOTE: Be sure & attend this outstanding auction. See pictures on our website – www.almartinauctions.com.

**TERMS: CASH/GOOD CHECK
POSITIVE ID REQUIRED** **MASTERCARD/VISA
DEBIT/CREDIT CARDS**

All property must be settled for before removal – All items sold as is where is
Not responsible in case of accidents.
Announcements made day of sale take precedence over any advertising.

DAROLD D. REYNOLDS ESTATE, OWNER
Todd Canaday, Executor Joe Goedken, Attorney

Al Martin AUCTION COMPANY LLC
307 Church Street • Ottumwa, IA 52501 • 641-682-5465 • almartinauctions.com

MAJOR BRITISH COLLECTOR CAR AUCTION

Saturday, November 19, 2022 • 10:00 AM

Located: 101 1/2 N. 16th Street • Fairfield, IA

Vehicles: Over 30 MG, Aronde, Morris, Triumph, Nash, Ford Pickup, 1978 Dodge 4x4 Dually, Stub Nose Straight Trucks, Lots of Parts, Motors & Misc.

Trailers: Car Trailers, Motorcycle Trailers, Lawnmower Trailers.

Tractor: AC C Tractor; AC Disc; AC Plow; AC Loader; Collector Mowers.

Tools: Wheel Service Tire Machine & Balancer; Duro Craft Car Lift; 10 Large Floor Model Toolboxes; Air Compressors; Metal Lathes; Presses; Shear Press Brake & Metal Rollers; Welders; Torches; Generators; Sandblasters; Motorcycle Lift; Lawnmower Lifts; Drill Presses; Bandsaws; Tablesaws; Chopsaws; Transmission Jacks; Paint Sprayers; Woodworking Tools; Over 5 Hayracks of Mechanic Tools; Lots Misc.

Mark Pohren Estate

Rick Spees

Auctioneer

641-919-4786

1960 Libertyville, Rd
Fairfield, IA

www.speesauktion.com

Not Responsible in Case of Accident.

Any Announcement Made Day of Auction Holds Precedence Over Advertising

Hertz Real Estate Services LAND AUCTION

147.72 Acres, m/l - In 3 Parcels
Keokuk County, Iowa

Located Just East of What Cheer

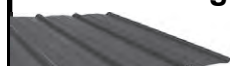
Parcel 1: 38.17 Ac., m/l - Mixture of CRP and Cropland
Parcel 2: 72.49 Ac., m/l - 57.63 Top Ac. with 79.50 CSR2
Parcel 3: 37.06 Ac., m/l - Recreational Farm with a Pond

Thursday, November 3, 2022 @ 10:00 a.m.

Keokuk Co. Fairgrounds • 13061 170th St. • What Cheer

Washington • 319-382-3343
www.Hertz.ag

Metal Roofing



Buy Direct



641-664-3990
www.awmetal.net

Yoder YP Precast

Concrete Feed Bunks
J Bunks
Pasture Bunks
Water Tanks

641-203-7772 641-898-2803
2870 210th St Seymour, IA 52590

USED DOUBLE WIDE

\$34,900 WOW!!!!

This Won't Last

573-657-2176

amegamobilehomes.com



2003 Chevy Silverado

Ext. Cab, 4x4, 106K Miles

660-216-4779



2000
Low Rider
Sissy Bar & Pad,
Low Miles,
Like New!
5300 Miles

NO DOC
FEES!

\$6,995

C&C Cycle
Chariton, IA • 888-475-2243
www.cc-cycle.com



SAM'S AUTO SALES

319-204-5214

www.samsautosalesia.com

Please See Our Website for Our Repairable Vehicles!



READY TO GO

2016 JEEP WRANGLER UNLIMITED SPORT

4x4, 4 Dr SUV, Auto, 5 Spd, Gasoline,
3.6L V6, 54,452 Miles

\$23,000



READY TO GO

2017 NISSAN TITAN XD SV

4x4, 4 Dr, Crew Cab, Auto, 6 Spd,
5.0L V8, Diesel, 28,185 Miles

\$28,500



READY TO GO

2017 GMC SIERRA 1500 SLT

4x4, 4 Dr Crew Cab, 5.8 Ft SB, Auto,
8 Spd, Gas, 6.2L V8, 75,933 Miles

\$26,500



READY TO GO

2020 TOYOTA TACOMA TRD SPORT

4x4, 4 Dr Double Cab, 3.5L V6,
Gas, Auto, 6 Spd, 43,700 Miles

\$30,500



CLEAN TITLE

2014 CHEVROLET SILVERADO 1500 LT Z71

4x4, 4 Dr Crew Cab, 5.8 Ft SB, 5.3L V8,
Flex Fuel, Auto, 6 Spd, 117,096 Miles

\$25,500



CLEAN TITLE

2018 GMC SIERRA 1500 SLT

4x4, 4 Dr Crew Cab, 5.8 Ft SB, Auto, 8 Spd,
5.3L V8, 82,051 Miles, One Owner

\$35,500



CLEAN TITLE

2013 JEEP WRANGLER UNLIMITED SAHARA

4x4, 4 Dr SUV, Auto, 5 Spd,
3.6L V6, Gas, 150,928 Miles

\$23,000



CLEAN TITLE

2014 DODGE RAM 3500 BIG HORN

4x4, 4 Dr Crew Cab, 8 Ft LB, SRW,
6.7 Turbocharger, Diesel, 175,301 Miles

\$32,800

Mt. Pleasant, IA • 803 East Winfield Ave • NOT RESPONSIBLE FOR TYPOGRAPHICAL ERRORS



SULLIVAN AUCTIONEERS, LLC

A FAMILY OWNED BUSINESS SINCE 1979



MATT



MICHAEL



LUKE



JOHN



DAN



JOE



JIM



BILL

Headquartered in Hamilton, Illinois, Sullivan Auctioneers, LLC is one of the largest Real Estate and Farm Machinery Auctioneers in the nation.

For more than 40 years we have been conducting professional auctions. We connect our sellers with thousands of interested buyers around the world.

Considering an Auction?
CALL OR EMAIL TODAY FOR A NO OBLIGATION CONSULTATION!
Toll Free (844) 847-2161 | Sold@SullivanAuctioneers.com
www.SullivanAuctioneers.com | Lic. #444000107



1997 Dyna Wide Glide
Vance & Hines
Long Shots,
Harley Leather Bags,
Only 9K Miles,
Nice!

NO DOC FEES! **\$6,995**

C&C Cycle
Chariton, IA • 888-475-2243
www.cc-cycle.com

NEW MOBILE HOME STOCK
Just Received (5) New Units, They Gotta Go!
573-657-2176
amegamobilehomes.com

MAST VINYL WINDOWS
THERMO-PRO WINDOWS
Custom Size Is Our Specialty
Professional Installation Available
FREE ESTIMATES
22172 Hwy. 63
Bloomfield, IA 52537
800-206-9949

BUYER OF STANDING TIMBER: Walnut & Soft Maple Are Our Specialty; Also Other Species. Bonded & in Business for 30 Years. We Pay Before Cutting. Gingerich Sawmill LLC, Bloomfield, IA.
641-722-3002 11-11

FOR SALE: Remington 700 Youth Model 243 Cal. With 3x9x40 Scope. Like New. 3 Boxes Of 257 Weatherby Shells, And Several 308 Military Shells.
660-651-3722 11-11

SPRAY FOAM INSULATION: We Install Open & Closed Cell Sprayfoam. Strengthen Your Building And Block Drafts! Over 1 Million Bd. Ft. Applied. Contact Lester At: Spray Tek, LLC 16302 192nd St., Bloomfield, IA 52537
641-208-7071 TFN

CUSTOM LOG SLABBING SERVICES: No Log is Too Big! Maximum Log Capacity 90 Inches Diameter by 27 Foot Long. Jaguar Lumber
641-664-2080 TFN

FOR SALE: USED STEEL PIPE 2" to 48" Diameter, Located: Carrollton, MO. Redmount Midstream LLC. For Details Call.
660-542-3000 12-23

TIMBER MANAGEMENT: Buying Standing Timber. Bonded & Insured. PAID IN FULL PRIOR to HARVESTING. Specializing In Walnut - Oak - Maple. Cole.
641-895-8209 12-31-22

FREE HEAT & HOT WATER: Eliminate Monthly Heating Bills w/Classic Outdoor Wood Furnace. No Sunday Calls.
660-707-3866 TFN

BUYER OF STANDING TIMBER
Lavon Gingerich Bonded and Certified
JAGUAR LUMBER
19250 Jaguar Trail • Bloomfield, IA 52537
641-664-2080

I am Looking to Buy Your Deer Antlers, Sheds & Heads
Big & Small, I Buy Them All!!!
Ronnie Coffelt
417-339-1462



SCOTT HUSKEY'S HOME SERVICE: Insulated Skirting Systems For Manufactured, Modular And Site Built Homes. Lowers Energy Cost And Prevents Frozen Water Lines. Since 1972.
573-696-3468 TFN

FOR SALE: Hundreds of Live Edge Slabs in Stock. Specializing in 40 Inches Plus Diameter Slabs/Logs. Jaguar Lumber
641-664-2080 TFN

PETS
FOR SALE: Registered Mini Aussie Puppies, UTD On Shots, Just In Time For Christmas! Very Cute And Friendly, Price To Sell.
641-664-2001 11-18

PUPPIES, PUPPIES: We Want to Buy Your Puppies! Registered or Mixed Breeds. We Have Homes Waiting for Them!
573-784-9866 TFN

NOTICE!
THE HAWKEYE TRADER
reserves the right to refuse any ad or to edit any portion of an ad at any time. **The Hawkeye Trader** will give credit for only one week of incorrect ad copy. If there is an error in the first week's publication, call our office and an adjustment will be made. In case of error your ad may be run in the following week's edition at no charge or you may request a refund or credit on your bill. **The Hawkeye Trader** does not accept liability for any loss or damage caused by an error or inaccuracy in the printing of an ad beyond the amount paid for the space occupied by the advertisement in which the error occurred. **The Hawkeye Trader** cannot guarantee specific page or location placement of any ad. There will be a \$10 check return fee for any NSF check. We are not responsible for illegible copy received in mail. If your item in the paper is sold before your ad runs out or after we receive it we will issue you credit for further advertising. Any pictures for display ads received become the property of **The HawkeyeTrader** unless accompanied with a self addressed stamped envelope.



PETE'S TIRE & AUTO REPAIR

301 N. 2nd Pulaski, IA
Mon.-Fri. 8-5
Sat. 8-12
641-675-3650

All Major Brands:
Car, Light Trucks & Farm Tires,
Auto Service & Mechanical



2015 FLRT Free Wheeler
Vance & Hines Ext,
Luggage Rack,
48K

NO DOC FEES! **\$19,995**

C&C Cycle
Chariton, IA • 888-475-2243
www.cc-cycle.com

Golden Grain Bins Winter Discount

Grain Bins		Floors W/12" Supp. & Flashing	
18'x18'	4,195 Bu. \$6,511	18'	\$1,817
27'x21'	11,265 Bu. \$13,069	21'	\$2,485
42'x24'	32,245 Bu. \$30,463	27'	\$4,145
		42'	\$9,840

GMLS Industries, Inc.
PH: 660-699-2179
Or 888-983-2136
www.gmlsindustries.com

- Need Some Extra Cash? -
I Buy All Silver, Gold, Coins & Bars.
Silver Dollars, \$500 & \$1,000 Bills.
Buyer For Over 50 Years.
Pay Cash On The Spot.
Will Pick Up At Your Home Or Bank.
Try Us - You Will Be Pleased.

WALLIS COMPANY
MAX HAGEN
Cedar Rapids, IA • Same Address For 50 Years
Call For Info:
319-360-0213 Or 319-396-7760

Clip & Save This Ad

Household Auction Online-Only

BIDDING OPENS: THURS, NOV 17
BIDDING ENDS: THURS, DEC 1

Vintage & Antique Items - Furniture - Household Goods -
Costume Jewelry - Quilts - Golf Clubs - Lift Chair - Holland Grill -
Taxidermy Mounts - Tools - Vintage Pyrex - Frankoma - California Pottery.
Vintage Tupperware - Red Wing Pottery - and MUCH MUCH MORE

View <https://greinerrealestate.hibid.com/auctions/> to register, bid, and view full terms.

JIM WONDERLICH, OWNER
161 S FOURTH ST, OLLIE, IA 52576

OPEN HOUSE: SUNDAY, NOV 20, 2-4 PM

PICKUP: SUNDAY, DEC 4, 3-5 PM
(items must be paid for and picked during this time)

GREINER REAL ESTATE & AUCTION LLC
319-694-4522
www.GreinerRealEstate.com

Greiner Real Estate & Auction LLC, Richland - Licensed in Iowa
Terms: See on-line auction site for terms. Link will be on www.greinerrealestate.com/upcoming-auctions. Information is believed to be accurate however buyers should verify information to their satisfaction.

Harbison Brush Mowing
 Brush Mowing • CRP Fields • Timber • Trails
 Pasture Cleanup • Tree Shear • Fence Rows

Jeremy Harbison
 Cell: 319-461-0376
 Home: 319-694-2300

HARBISON FENCING
"For All Your Fencing Needs"
Barbwire • Woven Wire
Silt Fence • Vinyl Fencing
Hi Tensile
 319-694-2300 - Home
 319-461-0376 - Cell

CLASSIFIED COUPON

Use the Power of Your Traders for **Regional Classified Results!**

Clip this coupon to run a Classified Ad for **\$8.75** for one week.
 1 Classified Ad for two weeks or 2 Classified Ads for one week for **\$17.00**.
Picture ads are not included with coupon, call for pricing.
Each ad must be 20 words or less, additional 20¢ per word over 20 words

AD NO. 1: (20 Words Or Less)

AD NO. 2: (20 Words Or Less)

GINGERICH SAWMILL, INC.
 Buyers of standing timber. **30 Years in Business**
 Walnut & soft Maple
 (our specialty), also other species. Bonded.

WE PAY BEFORE CUTTING
BLOOMFIELD, IA • 641-722-3002

2001 Wide Glide
 Windshield, Luggage Rack, Back Rest, Low Miles, 19K Miles

NO DOC FEES! **\$7,995**

C&C Cycle
 Chariton, IA • 888-475-2243
www.cc-cycle.com

FOR SALE: AKC Chocolate Lab Pups! Born 8/29/22, Great All-Around OFA Tested Parents, Hunting And House Dogs, Real Deal! \$750. Call Or Text. 641-572-0372 11-18

FOR SALE: Poodle X Puppies, 11 Weeks Old, Shots And Dewormed, Brown And Brindle Colored, Cute And Friendly, Must Go, \$50. 641-856-7156 11-11

FOR SALE: Black And White Border Collie Puppies, \$25. 2 Miles North Of Casey's Emery Miller 20843 200th St. Sigourney, IA 52591 11-11

FOR SALE: Rottweiler And Golden Retriever Pups, Ready Now. 641-929-3572 11-11

Hertz Real Estate Services LAND FOR SALE

KEOKUK CO. - NEW LISTING! 133.55 Acres

- Located 2 Miles NE of Fremont.
- Mix-Use Farm With Row Crop, CRP, Pasture, & Acreage Site.
- Secluded Property with Excellent Wildlife Habitat

KEOKUK CO. - NEW LISTING! 113.05 Acres

- Located 4.5 Miles NE of Fremont
- Productive Farm With Income From Row Crop, CRP, & Pasture Acres.
- Nice Recreational Property with Potential Building Site.

SALE PENDING!

Washington • 319-382-3343
www.Hertz.ag

Triple Your Classified Ad's Power By Running It In The Traders
The HAWKEYE TRADER, SHOW ME TRADER & MID-MO TRADER!

WHEN YOU SELECT ALL THREE TRADERS, YOUR AD WILL BE READ IN OVER 170 COUNTIES IN 5 STATES & ONLINE!

- HAWKEYE TRADER ONLY:** 1 Ad For One Week **\$8.75** (84 Counties)
- HAWKEYE TRADER ONLY:** 1 Ad For Two Weeks **\$17.00** Or 2 Ads For One Week **\$17.00** (84 Counties)
- BOTH HAWKEYE & SHOW ME TRADER:** 1 Ad For One Week **\$17.00** or 2 Ads For One Week **\$32.00** (150 Counties)
- BOTH HAWKEYE & MID MO TRADER:** 1 Ad For One Week **\$17.00** or 2 Ads For One Week **\$32.00** (106 Counties)
- BEST VALUE: HAWKEYE, SHOW ME & MID MO TRADER:** 1 Ad For One Week **\$25.00** (170 Counties)
- BEST VALUE: HAWKEYE, SHOW ME & MID MO TRADER:** 2 Ads For One Week **\$47.00** (170 Counties)

To Receive This Rate, Coupon Must Be Mailed In With your Payment
 Or Use Our Website @ www.hawkeyetrader.com For More Savings Options

HAWKEYE TRADER, P.O. Box 96
Pulaski, IA 52584

LAND AUCTION
 217.48 ACRES M/L IN LUCAS COUNTY

TUESDAY, NOVEMBER 22ND, 2022 | 10:00 AM
 Carpenter's Hall | 1215 Court Ave | Chariton, Iowa 50049

Representing The Estate of George Wayne Pierschbacher in the sale of 217.48 acres located north and east of Chariton, Iowa. The Pierschbacher family farm dates back to 1961 making this an exceptional and rare opportunity to purchase Lucas County farmland that hasn't been available to the public in over 61 years. This farmland offering presents an opportunity to buy tillable acres currently in hayground, pastureland, excellent recreational and hunting options, multiple building sites with beautiful views, and an acreage being sold in "as is, where is" condition.

Open House - Tuesday, November 15, 2022 from 3:00 - 5:00 PM

TRACT 1: 50.26 ACRES M/L
 TRACT 2: 103.45 ACRES M/L
 TRACT 3: 33.31 ACRES M/L
 TRACT 4: 27.5 ACRES M/L
 TRACT 5: 2.96 ACRES M/L

PEOPLES COMPANY
 INNOVATIVE REAL ESTATE SOLUTIONS
PeoplesCompany.com | Listing #16481

Adam Curran | 641.203.2931 | Adam@PeoplesCompany.com
 Sara Curran | 641.344.0847 | Sara@PeoplesCompany.com

WE HAVE MOBILE HOMES
 Instock New Arrivals (8)
 Homes, Need To Go
 As Soon As Possible
573-499-9993
columbiadiscountshomes.com

FOR SALE
Driveway Fabric Rolls
 Commercial, Heavy Duty
 Designed for Heavy Traffic
 125" Wide • 432' Long

\$370.00/Roll
660-216-0938

Where Quality Comes First

Are You Thinking About A Building? Bring Your Size And We'll Give You A FREE Price Quote!
WE WILL ENGINEER YOUR TRUSSES TO YOUR SPECS

BUILDING PACKAGES (TAXES INCLUDED)
SERVING THE TRI-STATE AREA SINCE 1992

Call For Pricing On Building Packages!

- WE WILL DELIVER -
FREE ESTIMATES ON ALL BUILDINGS
WE MANUFACTURE STEEL ROOFING,
SIDING AND TRIM, CUT TO THE INCH.

BUY DIRECT AND SAVE!

BUILD IT YOURSELF OR HAVE ONE OF OUR PROFESSIONAL CONTRACTORS DO IT FOR YOU.

4 MILES SE OF REVERE, MO
OR 6 MILES NW OF WAYLAND ON C.
26758 HWY C., ALEXANDRIA, MO 63430

WAGLER METALS Missouri Warehouse
 MON.-FRI. 7AM-5PM
 SAT. 7AM-2PM


LAN-DOW BUILDINGS
 "We Build to Suit Your Needs"

"Custom Built"
 Pole Barns
 Garages
 Utility Buildings

"H" Don or Dick Middleton
Memphis Lumber Co.
1-800-337-5858
Phone: 660-465-8595
Fax: 660-465-8596

MASTER BUILDERS

Post Frame Buildings



24 x 30 x 10	30 x 40 x 10
1-10x8 Overhead Door	1-10x8 Overhead Door
1 Walkout Door	1 Walkout Door
Concrete Floors	Concrete Floors
\$29,000	\$33,000

All Sizes On Sale
Price Includes All Tax and Labor

Call (641)295-4970 • (641)295-4467
Customers are responsible for all permits.



2020 Honda Pioneer 5 1000 Limited, Roof, Windshield, Only 1,100 Miles

NO DOC FEES!

\$20,995

C&C Cycle
Chariton, IA • 888-475-2243
www.cc-cycle.com

RECREATIONAL FOR SALE: Ford IH JD Tractors; Have Loaders, Blades, Mowers, Disc, Plows, Spring Tooth, 4.3L Mercruiser I/O. See To Appreciate. Price Negotiable. Marceline. Call After 5. 660-376-3114 11-18

AG RELATED FOR SALE: Bale Feeder Wagon, \$1,500; Front And Rear Tractor Tires, 4-18-30; 20+ Head Dorper Katadin May Ewe Lambs, \$275; Small Square Alfalfa Hay. 2 Miles North Of Casey's. 20843 200 St. Sigourney, IA 11-11

WANTED: New Leader 3020 Lime Box, 16 Or 17 Ft. With Belt Over Chain Conveyor To Mount On Tandem Truck. 641-990-1249 11-18

FOR SALE: Ford 3000 Gas, Live Power, Power Steering, In Good Condition. \$4,500. 660-341-8089 TFN

FOR SALE: New 3 pt. Tillers, Heavy Duty, Gear Driven, 7' to 12', Starting at \$4,050. 660-874-4455 12-23-22

FOR SALE: 24 Ft x 5 Ft Free-Standing Cattle Panels, Weighing 600 Lbs Each, Fastener Chains Included. Located in Troy, IA. 641-680-0892 TFN

FOR SALE: Ford 8N, Good Condition, \$1,800. 660-341-8089 TFN

AUTOMOTIVE FOR SALE: 2018 Silverado 1500 LT 4x4 Crew Cab, Grill Guard, New Tires, Black Interior Exterior, 71K \$36,500. Unionville. 660-730-0843 11-18

FOR SALE: 1971 Chevy Chevelle 350 Auto, Black Inside And Out, Nice Paint, New Tires. CARGAR Wheels, Cruise Control. \$31,500, Info. 573-248-6111 11-18

FOR SALE: 2007 Silverado LT, 4x4, Crew Cab, New Body Style 5000 On Rebuilt Engine, 175K, Silver \$14,500. Unionville. 660-730-0843 11-18

LIVESTOCK FOR SALE: Bumper Hitch Stock Trailer, 6 Ft. X 18 Ft., New Tires And Rims, New Brakes And Drums, Bearings Repacked, All New Wiring, LED Lights, Good Title, \$6,400 OBO. 641-919-9117 11-18

FOR SALE: 10 Outstanding Sim/Angus Bulls 14 Months Old Black, Polled. Paul Martin, Shelbina. 573-822-4216 11-18

BULLS FOR LEASE: Over 70 Registered Angus & Hereford To Choose From. 90 Day Lease \$900. Trucking Available At Extra Charge. Kingdom City, MO. 573-999-3197 TFN

WE BUY FARMS

- ✓ Any Condition.
- ✓ Quick Decision.
- ✓ Quick Closing.

Honey Creek Farms, LC.

Contact:
Steve: 515-208-1149 | steve2251@hotmail.com
Dave: 515-991-0308

MISC FOR SALE: Like New Mossberg 835 Shotgun Combo, Has Rifled Slug Barrel With Sights, Tapped For Scope, Shoots 3 1/2 Inch Shells, Camo In Color With Sling, \$500. 573-588-4518 11-11

SPRAY FOAM INSULATION: We Install Open & Closed Cell Sprayfoam. Strengthen Your Building And Block Drafts! Over 1 Million Bd. Ft. Applied. Contact Lester At: Spray Tek, LLC 16302 192nd St., Bloomfield, IA 52537 641-208-7071 TFN

J & J ROOFING & SIDING: Call For Your Roofing And Siding Needs. 641-638-2402 11-11



KARS, INC ON EUCLID

www.karsincdsm.com Ask for DeMarcus

2000 E. Euclid • Des Moines, IA **515-265-0215**

				
2013 Dodge Durango SXT AWD, Loaded, CD/MP3, 3rd Row Seating, 114K, \$12,995	2010 Chevy HHR LT 4 Cyl, Auto, Full Power, Sunroof, Leather, 107K, \$8,995	2014 Chevy Impala LTZ Loaded, Leather, Sunroof, 160K \$11,995	2013 Chevy Malibu LTZ Loaded, Leather, Full Power, 107K \$13,995	2015 Dodge Durango SXT V6 Auto, Loaded, Full Power, 3rd Row Seating, Sunroof, 53K, \$20,995
				
2013 Honda CR-V EXL 4WD, Full Power, Heated Leather, CD/MP3, Sunroof, 144K, \$14,995	2015 GMC Sierra K1500 Denali , Crew Cab, 4x4, 6.2 V8, Auto, Loaded, Leather, Sunroof, Matching Topper, CLEAN! 147K, \$28,995	2013 Ford F150 Super Cab 4x4, V8, Auto, Full Power, 104K \$18,995	2014 Cadillac CTS Luxury Collection AWD, Full Power, Heated & Cooled Seats, Sunroof, Only 78K Miles, \$16,995	2011 Chevy Silverado K1500 LT 4WD, Crew Cab, 5.3 V8, Nicely Equipped, 130K, \$17,995
				
2014 Dodge Charger R/T Hemi V8, Auto, Full Power, Heated Seats, CD/MP3, 95K, \$19,995	2005 Nissan Frontier 4WD, Crew Cab, LE, V6, Auto, Loaded, Sunroof, 132K, \$13,995	2017 Jeep Wrangler Sport V6, Auto, 4x4, Winch, MP3, 52K Miles \$25,995	2013 Jeep Wrangler Sport 4WD, V6, Auto, Air, CD/MP3, 144K \$22,995	2008 Lexus RX350 350 AWD, Full Power, Leather, Loaded, Sunroof, 144K, \$12,995



Imagine A Lifetime Of Beauty
With The Strength Of Steel.

As The Original Stone Coated Steel Roofing System, The DECRA Product Line Represents A Perfect Blending of Over 50 Years of Research & Practical Experience. Offering The Ultimate In Performance & Engineering Design Is What DECRA Roofing Systems Are All About.

SHINGLE XD **DECRA** SHAKER XD
Stone Coated Steel Roofing Systems

Full Line Of Building Materials



Bring Your Plans In For A FREE ESTIMATE



17893 212th Street • Bloomfield, IA 52537
641-722-3605 • Mon. - Fri. 7 AM - 5 PM

NEW



2022 Special Edition GI Tri-Glide

NO DOC FEES!

JUST IN! MUST SEE!

C&C Cycle
Chariton, IA • 888-475-2243
www.cc-cycle.com

JAMESPORT BUILDERS
660-684-6931
POST FRAME BUILDINGS



Free Estimates

Machine Sheds • Horse Barns • Garages

WE ALSO DO METAL ROOFS, SPRAY FOAM INSULATION (OPEN & CLOSED CELL) & CELLULOSE INSULATION

We Have: House Plans, Dirt Work & Concrete Available

Hours: Mon-Fri 8 AM - 5 PM • Sat By Appointment Only

32137 State Hwy 6 • Jamesport, MO 64648

Serving Southern Iowa




COVERCRAFT

Carhartt SeatSaver Custom Seat Covers



- HEADREST COVERS
- ARMREST & CONSOLE COVERS
- SEATBELT & SAFETY RESTRAINT ACCESS POINTS
- OVERLAPPED TRIPLE-STITCHED SEAMS
- CARHARTT BRAND LOGO SEWN ONTO SEAT BACKS
- STORAGE POCKETS
- CLASSIC CARHARTT STYLING
- ADJUSTMENT CONTROL CUTOUPS WHERE NECESSARY

COVERCRAFT SINCE 1965




BW Trailer Hitches

- All Aluminum
- Customizable
- American Made



Martin Truck Bodies



ECOMAX

Gatorback Mud Flaps




Weather Guard Toolboxes

DON'T JUST PROTECT IT


LINE-X IT

BEDLINERS. ACCESSORIES. PROTECTIVE COATINGS.




LINE-X

WHEN BUYING YOUR NEW TRUCK, ASK FOR LINE-X BY NAME.



View our vehicle inventory online

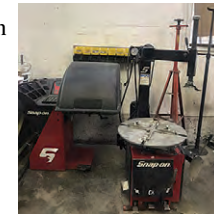




Hube's Garage Complete Liquidation LIVE AUCTION Saturday, November 19th @ 10:00 AM

1310 East Main • Knoxville, IA

Auctioneers Note: As Hube Has Advanced His Automotive Skills Into the Electronic World, His Garage Building Has Been Sold & Will Offer the Following at Public Auction. Most Larger Equipment is Only 2 Yrs Old or Less!!



Snap-On Mdl EEWH312A Tire Changer, Only 2 Yrs Old
Snap-On Mdl EEWB331A Motorized Wheel Balancer, Only 2 Yrs Old
Robinair Mdl AC1234-4 YF A/C Machine, Only 2 Yrs Old w/Less Than 10 Lbs Refrig Ran
Snap-On MM2350SL 220V Mig Welder w/Tank & Tig Attachment
Puma Mdl PK-6060V 60 Gal 220V Vert Air Comp w/V-Pump, Osed Only Approx 10 Hrs
Big Red 20T Hyd Shop Press
2 Snap-On 2T Hyd Floor Jacks
3 1/2T Carlyle "NAPA" Floor Jack
Snap-On EELD100A Evap Smoke Machine
Sunco Fuel Transfer Tank, Less Than 1 Yr Old
Big Red Engine Cradle
Branick 7400 Strut Spring Compressor
660 Jump-N-Carry Jump Pack, 200 Amp 12V Port Battery Charger, Only 1 Yr Old
Klutch 1" Pneumatic Impact, Used 1 Job Only
Under Hoist 2-Stage Transmission Jack
Various Steel Shelving & Bench
2 Under Hoist Jack Stands
Craftsman Elec Bench Grinder
Matco 4' LED Under Hood Light
Craftsman Floor Creeper & Others
Under Hoist Port Drain Pan
Oxy/Acetylene Torch Kit w/Hose & Regulators, No Tanks

Specialty Auto Tools to Include: Matco Hubster Elite Front Wheel Bearing & Hub Remover-Installer; Autel TPMS Tools; OTC 3833 Tire Pressure Monitor; Ford V8 & V6 Master Timing Tool; Ford Cam Timing Tool Mdl 37200 Lisle; Timing Belt Holding Tool; Snap-On Master Comp Test Kit; Mac PT730MA Radiator Pressure Tester; Snap-On Fuel Pressure Gauge; Kent-Moore Fod Pressure Gauge; Matco Reverse Brake Bleeder Mdl MVP5000; Blue Point Metric Double Flaring Tool Kit; Standard Flaring Tool Kit; Blue Point Uni Brake Caliper Tool; A/C Comp Clutch Master Kit; Various Axle Nut Sockets Up to 4 1/4"; Ford 7.3 & 6.0 Diesel Injection Tools; Kent Moore Carb & TBI Service Kit; Matco Logic Probe; Blue Point Noid Lights; Near New HVIP Automotive Paint Gun; OTC Frost Plug Remove-Install Set; CV Joint Tool; Tif Refrig Leak Detector; Tire Repair Tools & Accessories; Steel & All Wheel Weight Set.

Quality Hand Tools: Snap-On TQR250E 1/2" Torque Wrench; Craftsman Standard 1/4"-7/8" Ratcheting Wrench Set; Various Quality Brand Deep-Shallow Sockets & Comb Wrenches Up to "18" Including 1 1/2" Mac; Socket Rails to Include Mac & Snap-On.

Pneumatic Tools to Include: 3/4" Drive C/P Impact; 3/8" Snap-On Ratchet; 1/2" Drive Sunex Impact, Used Very Little; Plus More.

Misc Receiver Hitch Accessories
Numerous Automotive Repair Parts
Several Carburetors to Include Factory '69 Camaro Rochester Quadro Jet
Misc Radiators
2-10" 12V Fans, Used Once
Whitaker & Filko Metal Parts Cabinets

Plus Most Usual Items & Support Tools Found in a Modern Automotive Repair Shop

Pickups & Collector Motorcycle: 2008 GMC Sierra K2500HD, V8, Auto, 3/4T, New Trans 1 Yr Ago by Advanced Transmission, White in Color, 277,114 Miles; 1989 Chevy R3500 Square Body, V8, Auto, TBI, 1T Dually, 3 Plus 3, White in Color, Full Size Topper, on Rebuilt IA Title, 70,344 Miles; 1973 Honda Scrambler CL350, All Orig, Green, Super Clean, Runs Good & Good Rubber, Only 13,041 Miles.

Woodworking & Other Tools Consigned by Others: RBI Hawk Floor Mdl Precision Scroll Saw w/Lighted Magnifier Light, Used 1 Hr Only; 10" Craftsman Radial Arm Saw; 12" Craftsman Wood Lathe Mounted on Bench w/38" Bed & Tooling; Craftsman Floor Model 4 1/2" Wood Planer; Craftsman Floor Model 8" 5 Spd Drill Press w/1/2" Chuck; 6" 3/4HP Floor Model Grinder; 2-14" Elec Chop Saws, 1 Comm B&D and 1 Comm DeWalt; 1/2" Elec Chicago Impact; 10" DeWalt Miter Box; Craftsman Router w/Table; Makito Variable Spd Recip Saw, in Metal Case; Dremel Mdl 9000 High Spd Rotary Saw in Case; DeWalt Dcoll 7.2-18V Work Site Charger-Radio; Small 2 Gal Campbell Hausfeld Air Comp; Several Elec Drills & Sanders Too Numerous to List.

Concessions Across Street at Casey's Restroom in Building

Hube's Garage - Aaron Hubler - Owner

View www.vandonsler.com for More Pictures.

Van Donsler Auction Company

Auctioneer: Rick VanDonsler 641-891-2222

WANTED

Standing Timber

Buying Walnut, Oak and Maple
20 Years In The Business
I Pay Before I Cut
RJ Lumber LLC • Raymond Yutzey
VM: 641-722-3348

2009
Heritage
Stereo,
Custom Grips,
Sissy Bar & Pad,
28K Miles

NO DOC FEES!

\$10,495

C&C Cycle
Chariton, IA • 888-475-2243
www.cc-cycle.com

Absolute Land Auction

Featuring 505 Acres ± of Nodaway Co., Missouri, Farmland and Home with Improvements Located Northeast of Clearmont, MO

Tuesday, November 22 - 10 am

Younger Auction Gallery, 312 E. South Hills Dr., Maryville, MO

Tract 1 - 30 Acres ± Located from Clearmont, MO, off of Hwy. 71 to Route B then East approx. 3.5 miles to Glacier Rd., then North 1.5 miles on gravel to 140th St., then East 1-1/2 mile on North side of road. Tract 1 features 30 Acres ± of gently rolling farmland with approximately 22.8 Acres in bean production this season according to FSA records. The balance is in draws and some open timber. **TAXES:** \$496.59

Tract 2 - 80 Acres ± Located West of Tract 1 at the corner of 140th and Hallmark Rd. Featuring 80 Acres ± of gently rolling farmland with some Clear Creek bottom land with approx. 59 Acres of corn, soybean and some hay production. There is one pond for livestock watering. At present there is approx. 43 Acres in corn with 2.93 Acres in soybeans and 6.29 Acres in Hay production. The balance is timber, which would provide excellent hunting. There are some diversion terraces. **TAXES:** \$172.21

Tract 3 - 160 Acres ± Located across from Tract 4, physical address 14470 Glacier Rd., Clearmont, MO. Watch for billboards. This tract features 160 Acres ± of rolling farmland with 102 Acres of cropland according to FSA records. All in pasture and open timber with multiple walnut trees. Excellent long-range country views and access to rural water would make this an excellent home site location. There are 2 smaller ponds for livestock watering. Fences are good to fair. This is a pretty farm with lots of potential. **TAXES:** \$747.02.

Tract 4 - 200 Acres ± with Home Located across the road from Tract 3, this tract features an older 2-story home built in early 1900s with 3-4 bedrooms. Home has eat-in kitchen, living room, full bath, paneling and carpet throughout with some hardwood flooring. There is a gas forced air furnace new within the last 5 years and AC on main floor. There is a full unfinished basement with washer and dryer hook-ups. Property has rural water and well for home or livestock. Home has newer roof and block foundation with walk out basement on South side, vinyl siding and thermal pane windows. There is a screened-in porch to the east and west. Fruit cellar in yard for storage or storm shelter. Home is located in the West Nodaway School District. **GRAIN STORAGE:** 1 grain bin approx. 12,000 bu. with propane drying floor and stirators, ground level auger system in good shape. **ADDITIONAL IMPROVEMENTS:** 90'x 52' metal machine shed wired with 110v and 220v, side entry door and large sliding doors for machinery access all on concrete flooring; one older, large barn in good shape for hay storage and livestock shelter, has good roof; one metal, open front machine shed, 34'x 62' in good shape for livestock or machinery storage with access to water hydrant; and other smaller, older structures for storage and pump house. This 200 Acre farm has good to average fences for livestock and approx. 5 ponds, some with tube structures in good shape, good diversion terraces with some Clear Creek bottom ground. At present, there is approximately 146.32 in cropland according to FSA records, all in good pasture mix grasses and an abundance of mature walnut trees. **TAXES:** \$1,302.72.

Tract 5 - 40 Acres ± Located just South of Tract 4 on Glacier Rd. and 150th St., this farm features 40 Acres ± of gently rolling farm ground all in grass with one pond and access to rural water with good to average fences. There is a one grain big by Butler, approx. 1200 bu., with aerator table in good shape. FSA records show 26.44 acres of cropland, which is all in pasture mixed grasses and open timber, some draws with good hunting for deer, turkey, quail and some pheasant. **TAXES:** \$237.26.

TERMS: 10% Down Payment Per Tract of good faith, non-refundable money to be made on day of sale entering into purchase agreement guaranteeing clear title with balance is due at closing. **Each tract will be sold individually and will not be offered together in any combination.** Soil Maps, Aerial Maps, Photos and Complete Details on Website.

Doris Porterfield Trust



Mark Younger, Auctioneer For pictures & maps visit our website
660-541-1977
Email: yac@youngerauction.com **WWW.YOUNGERAUCTION.COM**

POST FRAME BUILDINGS

- Best Quality
- Great Prices
- Great Service



www.lancasterlumber.com

LANCASTER LUMBER, INC

800-424-5071 • LANCASTER, MO



**2015 Spyder
RTS**

Lots of Extras,
Only 17K Miles

NO DOC FEES!

\$17,995

C&C Cycle
 Chariton, IA • 888-475-2243
www.cc-cycle.com



FARMLAND AUCTION

WARREN COUNTY, IA 229.65 +/- ACRES

Thursday, December 8th, 2022 at 12:00PM

FARMLAND DETAILS

- Tract 1 - 29.49 +/- Acres
Building Locations
- Tract 2 - 48.30 +/- Acres
Building Site & Hunting
- Tract 3 - 151.86 +/- Acres
Tillable, CRP, & Hunting

AUCTION LOCATION:
Indianola American Legion



VIEW DETAILS AND LAND FOR SALE AT IOWALANDCOMPANY.COM



Luke Skinner
515-468-3610

Contact Your Local Land Agents



Nick Skinner
515-650-0974



LEE EGLESTON MOVING AUCTION

SUNDAY – NOV. 13 – 11:00 A.M.

1805 Wiese Garden Road • RR Marshalltown, Iowa

Just a Couple Miles North Out of Marshalltown Just Off Highway 14 to the East

Shop Equipment & Tools – Primitives & Collectibles

Small Antiques - Huge Variety of Hardware & Tool Shop Inventory - 4x4 Pickup

2005 Chevy Silverado 1500 Z714x4 - in excellent running cond, leather seats, near new tires, shows a little rust but has been serviced regularly & is ready to go.

Shop Equipment & Tools – HD Rockwell Delta 10" Unisaw; Combination Lathe & Router w/9" bench & sliding router track; Craftsman Conventional Lathe w/bench; Rockwell Delta Bandsaw No. 28-300; Rockwell Delta Vertical Belt Sander & Stand; Delta Homecraft 4" Jointer & Stand; Bandsaw Style Belt Sander w/dust collector cabinet; 2 older Drill Presses; Bench top Wet Stone Grinder; Heavy Duty Steel Work Bench w/ Vise & Bench Top Press; All kinds of Hand Tools; Dayton Rolling Tool Box w/tools to be sorted out & sold.

Snowblower & Misc. - MTD 8-26 Yard Machine 2 Stage Snowblower, elec start; Craftsman 6.5HP Elec Start, Self-Propelled Walk-Behind Mower w/Bagger; Fimco Model LG-30 Pull Behind Trailer Sprayer "30 gal."; Older Tilt Bed 4'x9' Trailer used originally for golf carts; Shop Full of Hardware & misc. Woodworking Accessories, Clamps, etc. 46" tall by 25" wide Floor Safe; Rolling Stainless Steel Burn Barrel.

Special Mention Collectibles & Misc. - All original Koken Antique Barber Chair w/original leather, very useable & complete; Wooden 6 drawer old Store Base Cabinet; Antique Oak Machinists Toolbox; Old Well Pump; Brass Blow Torches & other misc. old tools to dig out; Patio & Lawn Furniture; Lawn Ornaments & Misc. items out of the shop & garage; Small Commercial Grade Kiln.

Everything is in nice condition throughout – beautiful acreage setting! Heated buildings if necessary

Visit our website www.vanmetre.net for photos & details.



2005 Chevy Silverado 4x4



Comb. Lathe & Router w/9" Bench



Delta 10" Unisaw



Small Kiln



Koken Barber Chair



Dayton Rolling Toolbox



Stainless Steel Rolling Burner

VAN METRE AUCTION COMPANY

641-752-8753

Fred Van Metre & Jake Goecke Auctioneers

FOR SALE: Lift Chair, Flex Steel, Near New, Medium Brown, Lady Used, \$674 Cash ONLY. Milo, IA 515-669-3838 11-11

BUYER OF STANDING TIMBER: Walnut & Soft Maple Are Our Specialty; Also Other Species. Bonded & in Business for 30 Years. We Pay Before Cutting. Gingerich Sawmill LLC, Bloomfield, IA. 641-722-3002 11-11

FOR SALE: Remington 700 Youth Model 243 Cal. With 3x9x40 Scope. Like New. 3 Boxes Of 257 Weatherby Shells, And Several 308 Military Shells. 660-651-3722 11-11

LOOKING TO LIQUIDATE OR DID YOU JUST INHERIT STUFF: Let Me Help. On-Site Tag Sale Services. Personal Property And Collectible Consultation. Also Seeking Baseball Cards, Furniture, Comic Books, The Unusual, And Anything Of Value. Before Throwing Out Your Potentially Valuable Items, Contact Me. CAGA Certified. Nathan Lilley. 573-253-4159 TFN

CUSTOM LOG SLABBING SERVICES: No Log is Too Big! Maximum Log Capacity 90 Inches Diameter by 27 Foot Long. Jaguar Lumber 641-664-2080 TFN





FOR SALE: USED STEEL PIPE 2" to 48" Diameter, Located: Carrollton, MO. Redmount Midstream LLC. For Details Call. 660-542-3000 12-23

TIMBER MANAGEMENT: Buying Standing Timber. Bonded & Insured. PAID IN FULL PRIOR to HARVESTING. Specializing In Walnut - Oak - Maple. Cole. 641-895-8209 12-31-22



Online Only Auction

Hay & Livestock Equipment






Bidding Begins to Close Thursday, November 17, 2022 at 7:00 PM

Forage

- (60) Bales of 2022 Brome Hay, Cover Edge Net Wrap
- (11) Bales of 2022 Grass Hay, Cover Edge Net Wrap
- (80) Bales of 2022 Grass Hay, Some Clover, Cover Edge Net Wrap
- (30) Bales of 2022 CRP Hay, 5ft Bales, Net Wrap, 15% Moisture
- (7) Bales 2020 Hay for Grinding
- (65) Bales 2022 Grass Hay, Net Wrap
- (125) Bales 2020 Grass Hay, Net Wrap
- (200) Square Bales 2022 Mixed Grass Hay, Never Wet, Stored Inside
- (100) Square Bales 2022 Out Straw, Never Wet, Stored Inside

Equipment

- Go Bob Hay Monster Double Bale Ring, Like New
- Hesston 1340 Mower Conditioner
- (2) New Skid Steer Mount Bale Spears
- Livestock Load Out Chute
- Tumble Bug Hay Dolly
- New 2022 Hay Toter 42ft 8 Bale In Line Hay Trailer
- New GWS Portable Steel Feed Bunk
- WorkSaver Skid Steer Mount Post Pounder
- New DH Farms 35ft Gooseneck Flatbed Trailer
- 350 Bu. Gravity Wagon
- 3 Point Blade
- WW Steel Livestock Panels
- Steel Livestock Alley
- Round Pen (9) 12 - Foot Panels
- Country Clipper Edge XLT Mower, 230 Hours
- Dog Kennel
- Numerous Fencing Materials

More By Sale Day!

Weaver Auction Company, LLC

Visit Our Website for Details & Bidding
www.WeaverAuctionCompany.com

f Follow Us On Facebook!

Tyler Weaver
660-216-9735

~ Auctioneers ~

Scott McCoy
641-799-4440

Post & Pole Frame Buildings



Specializing in:
 Post Frame Buildings
 (Up to 100' Wide Clear Span)
 Agricultural • Commercial
 Residential • Equine
 Heat Formed Metal Roofing & Siding
With 50 Year Warranty

**Quality Workmanship
 Best Quality Material**



Everlast Roofing, Inc.
OUR NAME SAVES IT ALL

2 Miles N. of Drakesville on pavement
 888-371-4710 • 641-722-3505
 17549 Husky Trail Drakesville, IA 52552

**SOUTHEAST IOWA
 STEPS**



More Sizes Available

**For Sales & Service
 Please Call Chris
 At 641-919-6922**

Check Us Out On Facebook

Steps • Stock & Custom Railings

Hog Buildings • Semi Hauling • Lagoons



M & R MANURE MOVING LLC
 Ryan 319.430.6968 Isaac 319.683.4692

SCOTT HUSKEY'S HOME SERVICE: Insulated Skirting Systems For Manufactured, Modular And Site Built Homes. Lowers Energy Cost And Prevents Frozen Water Lines. Since 1972.
 573-696-3468 TFN

FOR SALE: Poodle X Puppies, 11 Weeks Old, Shots And Dewormed, Brown And Brindle Colored, Cute And Friendly, Must Go, \$50.
 641-856-7156 11-11

FOR SALE: Rottweiler And Golden Retriever Pups, Ready Now.
 641-929-3572 11-11

FOR SALE: Hundreds of Live Edge Slabs in Stock. Specializing in 40 Inches Plus Diameter Slabs/Logs. Jaguar Lumber
 641-664-2080 TFN

PUPPIES, PUPPIES: We Want to Buy Your Puppies! Registered or Mixed Breeds. We Have Homes Waiting for Them!
 573-784-9866 TFN



2016 CVO Street Glide
 Screaming Eagle 110, Shotgun Shoeks Air Ride, FBI Bars, V&H Head Pipes, w/Rinehart Mufflers, 11K Miles

NO DOG FEES! **SPECIAL! \$28,995**

C&C Cycle
 Chariton, IA • 888-475-2243
www.cc-cycle.com



**Rick Dillon's 50+ Year Collection
 High End Gun and Knife Auction**

**Featuring Snake Guns, Colts, Rugers, Collectible Knives,
 Memorabilia, Advertising - *Online Bidding Available***

Saturday, Nov. 19 - 10 am & Sunday, Nov. 20 - 10:30 am

Younger Auction Gallery, 312 E. South Hills Dr., Maryville, MO






Check Website for Full Listing and More Photos

Younger Auction Company
 Mark Younger, Auctioneer • 660-541-1977
WWW.YOUNGERAUCTION.COM

FREE HEAT & HOT WATER: Eliminate Monthly Heating Bills w/Classic Outdoor Wood Furnace. No Sunday Calls.
 660-707-3866 TFN

PETS

FOR SALE: Registered Mini Aussie Puppies, UTD On Shots, Just in Time For Christmas! Very Cute And Friendly, Price To Sell.
 641-664-2001 11-18

FOR SALE: AKC Chocolate Lab Pups! Born 8/29/22, Great All-Around OFA Tested Parents, Hunting And House Dogs, Real Deal! \$750. Call Or Text.
 641-572-0372 11-18

FOR SALE: Black And White Border Collie Puppies, \$25. 2 Miles North Of Casey's Emery Miller 20843 200th St. Sigourney, IA 52591 11-11

**MOBILE HOMES
 IN INVENTORY**
 We Gottem In Stock,
 Call For Information
 573-249-3333 Or 573-303-5529
marktwainmobilehomes.com

NOVEMBER CONSIGNMENT AUCTION

**SATURDAY NOVEMBER 12TH 2022
 POWESHIEK COUNTY FAIRGROUNDS
 GRINNELL IOWA**

AUCTION 9:30 AM | ONLINE BIDDING 11 AM THROUGH EQUIPMENTFACTS

This listing was made 3 weeks prior to the sale!
 Expecting much more come sale day!
 Accepting consignments until Friday November 11th at noon!
Not responsible for accidents, any announcements made sale day take precedence over print ads!

LUNCH ON GROUNDS BY PAPA WOOLFE'S BBQ



IVERSON AUCTIONS, LLC
 CALL 641-325-1174
 GRINNELL, IA

2022 Polaris 570 EFI ranger only 350 miles
 2010 John Deere 5045 E MFWD with 563 loader only 445 hrs
 2019 Polaris 450 4 wheeler
 Landpride RCF2072 3pt mower
 New 12x30 livestock shelter
 Unverferth H725 head trailer
 Westendorf WL 40 loader w/10 4020 mounts
 Unverferth Rolling Reel 75
 Fibre Body utility box
 Quick Split 12 ton wood splitter
 Beilse 16ft heavy duty trailer

Kevin R. Morris Real Estate Auction

Auction Location: Sacred Heart Church Hall, 800 S Lindell St, Vandalia, MO 63382

Auction Monday, December 5, 2022 at 1:00 p.m.

34 Acres Row Crop/Development Audrain County, MO

Property Location: At the west edge of Vandalia, south of Highway 54 on Audrain Road 565/Galloway Road, to the intersection of West Walsh Boulevard. Property lies east of Galloway and north of Walsh. FSA calls 34 acres tillable crop land.

For more details, visit:

<https://nationalland.com/listing/vandalia-tillable-transitional-land>

**NATIONAL
LAND
REALTY**

Alec Wardenburg
Land Professional
636.577.5288



**BOYD
HARRIS**
REALTORS / AUCTIONEERS

Boyd Harris, ALC
Land Broker
573.682.6500

TRUE MODULARS

30 To 60 Day
Delivery Available,
3 And 4 Bedroom

573-657-7040
chateauhome.net



Looking for a New Ranger?

Order Today
for Quicker Ship Time on 2023's

**NO DOC
FEES!**

C&C Cycle
Chariton, IA • 888-475-2243
www.cc-cycle.com

RECREATIONAL

FOR SALE: 19 Ft. Open Bow Boat And Trailer. 4.3L Mercruiser I/O. See To Appreciate. Price Negotiable. Marceline. Call After 5. 660-376-3114

11-18

AG RELATED

WANTED: New Leader 3020 Lime Box, 16 Or 17 Ft. With Belt Over Chain Conveyor To Mount On Tandem Truck. 641-990-1249

11-18

FOR SALE: Ford 3000 Gas, Live Power, Power Steering, In Good Condition. \$4,500. 660-341-8089 TFN



Winter Build Sale!

Begin your search today at ClearyBuilding.com

Featuring:

FABRAL



Garages
Workshops
Shouse
Commercial
Farm

Call us for a **FREE** consultation!

DE SOTO, IA 515-834-2372

FAIRFIELD, IA 641-472-1525

TIPTON, IA 563-886-2903

Horse Barns & Arenas

800-373-5550 • ClearyBuilding.com



www.hawkeyetrader.com

KARS, INC

OF PLEASANT HILL

www!kars-inc.com

5701 E. University • Pleasant Hill, IA

515-564-0937



2012 Chevy Silverado K2500HD LT
Crew Cab, 4x4, V8, Auto, Great Equipment, Nicel 105K, **\$26,995**



2015 Ford Explorer XLT
4x4, V6, Auto, Loaded, Leather, 3rd Row Seating, 78K Miles, **\$20,995**



2013 Chevy Traverse LTZ
AWD, Loaded, Heated & Cooled Leather, Sunroof, 3rd Row Seating, 121K, **\$13,995**



2012 Chevy Malibu LS
4 Cyl, Auto, Nicely Equipped, 111K Miles, **\$11,995**



2015 Jeep Grand Cherokee Laredo
4x4, V6, Auto, Full Power, MP3 Player, 95K Miles, **\$20,995**



2007 Ram 2500 ST
4x4, Quad Cab, 5.9 Cummins, Full Power, 157K, **\$22,995**



2011 GMC Acadia SLT-2
AWD, Loaded, Leather, Sunroof, 3rd Row Seating, 120K, **\$11,995**



2015 Ford F250
6.2 V8, Auto, Big Grill Guard & Bumper, Aftermarket Wheels, Nicel 73K Low Miles, **\$29,995**



2010 Honda CR-V LX
4WD, Lots of Equipment, CD/MP3, Keyless Entry, 102K, **\$13,995**



2012 GMC Acadia SLT-1
AWD, Heated Leather, Loaded, Sunroof, 3rd Row Seating, Only 93K Miles, **\$13,995**



2012 Chevy Silverado K1500 LT
Ext Cab, x4, 5.3 V8, Full Power, CD/MP3, 116K, **\$17,995**



2017 Chrysler Pacifica Touring I
V6, Full Power, MP3/DVD, Keyless Entry & Start, 103K, **\$18,995**



2013 Ram 2500 ST, Crew Cab, 4x4, 5.7 Hemi, Auto, Air, Power Windows & Locks, Cruise, Tilt, 8' Box, 136K, **\$25,995**



2009 Ford Edge SEL
AWD, V6, Auto, Full Power, CD/MP3, Keyless Entry, 178K, **\$8,995**



2013 Chevy Malibu LTZ, Loaded, Heated Leather Seats, CD/MP3, Satellite Radio, Media Storage, 107K, **\$13,995**



**2009
Ultra
Classic**
One Owner,
17K Miles

**NO DOG
FEES!**

\$10,995

C&C Cycle
Chariton, IA • 888-475-2243
www.cc-cycle.com

Toy Tractors and Sports Memorabilia
AUCTION
Friday, November 18 • 6 pm
Busby's Barn, New Virginia, Iowa
(Take exit 43 off Interstate 35 and go east 3 miles on G76 Hwy. The auction barn is located at the intersection of G76 and R45 Hwy. Watch for sale signs!)

THIS IS A LIVE, IN-PERSON AUCTION. METHOD OF PAYMENT IS CASH OR GOOD CHECK. PHOTO ID REQUIRED TO REGISTER FOR BIDDING NUMBER. FEEL FREE TO BRING A CHAIR!

TOYS: Approx. 100 toy tractors in boxes; over 50 tractors, trucks, combines and other implements without boxes; framed advertising pics; operator manuals; tractor books.
Partial listing to include: various Allis-Chalmers; Deutz-Allis; John Deere; Farmall; Ford; Oliver; Case toys; 2-JD Precision 4020; JD Precision 5 btm. plow. Many are limited edition models. Several are early editions. See pictures on our website for a better idea of the quantity and quality of these items.

SPORTS MEMORABILIA: Baseball, football, hockey, basketball cards; comic books (Superman, Spider Man, GI Combat & others); Car Toons magazines; 70's Mad magazines; Nascar items; Star Wars items; GI Joe air craft carrier; 30-Budweiser steins; Michael Jordan books & posters; various sports pictures & books; Battle Ground & Fort Apache play sets; elec. football game.

Please check our website for a more complete listing and pictures.
<http://busbyauctionservice.wix.com/busbyauctionservice>

Busby Auction Service
Tim Busby (641) 449-3619 or (515) 238-9866

No credit cards or Venmo accepted. Announcements made sale day take precedence. Not responsible for accidents or inadvertent errors in advertising.

REMINDER
PUBLIC LIQUIDATION & MOVING AUCTION
Sat, November 19th - 2022 @ 9:00 a.m.
ON SITE 2616 Hwy 22 • Riverside, IA
Open House: All Day Friday, November 18th

**Tractors/Skidsteer/Farm Equipment • Livestock Equipment
Milking Equipment - Shop Tools • Antiques - Household**

Order of Auction: 9:00A.M. - Ring 1: Farm smalls, Shop Tools, Followed by Tractors & Farm Equipment; **9:30A.M. - Ring 2:** Household, Antiques, Milking Equipment, Livestock Equipment, & Misc. Hay & Lumber.

Owners: Jesse & Clara Yoder

Auctioneers Note: As Jesse & Clara & Family Have moved out of state. They will offer at Public Auction a nice line of Farm Equipment, Shop Tools, & Misc Items. We will be selling with 2 rings part of the time. **NOTE:** Items need to be removed in **1 week**.

Terms: Cash or Check w/ID. Not responsible for accidents or theft. All announcements day of auction supercede previous ads. Lunch & Bake Sale on Grounds.

Auctioneers:
Delmar Yoder 319-430-2711
Lonnie Miller 319-461-0019
5starauction.com
See Website for Photos

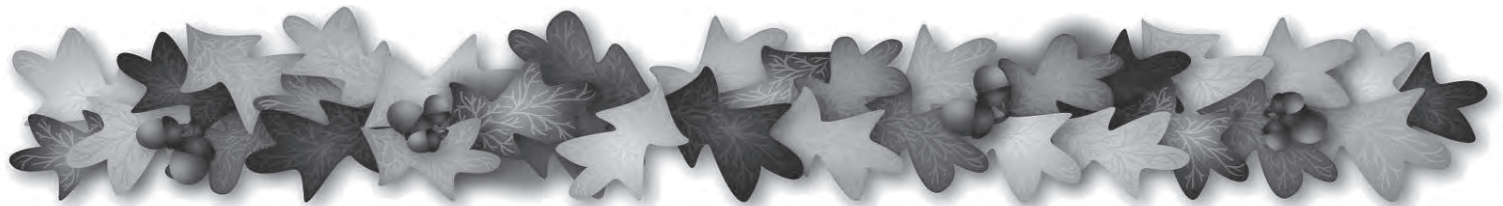


**FIVE STAR
AUCTION**
BEST BANG FOR YOUR BUCK

CUSTOM BUILT
PAINTED & VINYL **16 YEARS EXPERIENCE**
BUILDING & SHEDS

Many Styles & Optional Features Available
FREE DELIVERY WITHIN 30 MILES

Hillview Mini Barns
David W. Schrock
VM: 641-664-2842
15383 180th St
Drakesville, IA



www.hawkeyetrader.com

SAM'S RIVERSIDE REPAIRABLES
805 SE 30th St • Des Moines, IA • Phone 515-265-1212 • Toll Free 800-308-4096 • www.samsriverside.com
REPAIRABLES 515-265-1212 PARTS 515-265-8792 HEAVY TRUCKS 515-265-1656

 <p>SKU:N11911 2022 GMC Sierra K1500 Limited SLT Crew Cab, 4x4, Theft, 6.2L, 8 Cyl, 14,142 Miles \$48,900</p>	 <p>SKU:N40680 2022 Dodge Ram 1500 Laramie 4x4, Crew Cab, 5.7L, 8 Cyl, 2,638 Miles \$34,900</p>	 <p>SKU:N61707 2022 Ford F250 SD Lariat Crew Cab, 4x4, Theft, 7.3L, 8 Cyl, 19,065 Miles \$51,900</p>	 <p>SKU:M05146 2021 Ford Explorer XLT 4x4, 2.3L, 4 Cyl, 20,015 Miles \$34,900</p>	 <p>SKU:M95785 2021 Chevrolet Silverado 2500HD LT Z71 Crew Cab, Diesel, 4x4, Theft, 6.6L, 8 Cyl, 12,935 Miles, \$57,900</p>
 <p>SKU:L09523 2020 Ford F150 Lariat Super Crew, 4x4, Regular Title, 3.5L, 6 Cyl, 23,663 Miles, \$44,900</p>	 <p>SKU:L40828 2020 Chevrolet Silverado 2500HD LT Crew Cab, 4x4, 6.6L, 8 Cyl, 43,382 Miles \$39,900</p>	 <p>SKU:L21143 2020 Ford F250 XLT Crew Cab, Diesel, 4x4, 6.7L, 8 Cyl, 57,385 Miles \$49,900</p>	 <p>SKU:K34725 2019 Chevrolet Silverado 1500 LT Trail Boss Z71, 4x4, Crew Cab, 5.3L, 8 Cyl, 70,969 Miles \$30,900</p>	 <p>SKU:K46628 2019 Ford F150 XLT Super Crew Cab, 4x4, Theft, 3.3L, 6 Cyl, 53,003 Miles, \$28,900</p>
 <p>SKU:K78560 2019 Chevrolet Silverado 1500 Custom Trail Boss 4x4, Crew Cab, 5.3L, 8 Cyl, 12,770 Miles \$34,900</p>	 <p>SKU:H35449 2017 Dodge Ram 1500 Laramie 4x4, Crew Cab, 5.7L, 8 Cyl, 57,686 Miles \$25,900</p>	 <p>SKU:G59479 2018 Ford F150 King Ranch 4x4, Crew Cab, Theft, Regular Title, 3.5L, 6 Cyl, 66,443 Miles, \$38,900</p>	 <p>SKU:G55394 2016 Dodge Ram 2500 Laramie Crew Cab, 4x4, Diesel, 6.7L, 6 Cyl, 44,358 Miles \$39,900</p>	 <p>SKU:F13731 2015 GMC Sierra 1500 SLE All Terrain, Double Cab, 4x4, 5.3L, 8 Cyl, 54,686 Miles, \$27,900</p>

Our Hours Are 8:00 AM - 5:00 PM M-F • Sat 8:00 AM - 4:00 PM



Edina Livestock Sales
Edina, Missouri
Weekly Sales Start @ 12:30 PM

Friday, November 11th - Special Feeder Calf & Cow Sale

Friday, November 18th - Special Feeder Calf Sale

ALL SALES TELEVISED ON DV AUCTION To Consign For Any or All Sales or For All Information Call:
Owner - Kevin Strange • Cell: 660-341-9974
Ryan Strange • Cell: 660-341-9721
Sale Barn: 660-397-9999

Field Reps:
Bill Tom Hall 660-342-5420 • Jason Bischel 660-216-0373
Mike Bronestine 660-341-9965 • John Powell 660-341-1717

FOR SALE: JD 6620 Combine, Turbo And Hydrostat, Good Condition But Noise In Motor, Make Offer; JD 6600 Late Model, Runs Out Good; 16 Ft. Bean Head On Cart, Poly And Stainless Steel; 1968 Dodge 600 With Bed And Hoist, Fenders Open Out. Milton, IA.
515-419-1232 11-18

FOR SALE: Bale Feeder Wagon, \$1,500; Front And Rear Tractor Tires, 4-18-30; 20+ Head Dorper Katadin May Ewe Lambs, \$275; Small Square Alfalfa Hay. 2 Miles North Of Casey's. 20843 200 St. Sigourney, IA 11-11

FOR SALE: Ford IH JD Tractors; Have Loaders, Blades, Mowers, Disc, Plows, Spring Tooth, Lots Of Other Equipment. Pomeroy, IA. No Texts.
712-299-6608 11-11



2021 Can Am Outlander XT 1000
Only 300 Miles, Winch, Blade, Bumpers, Like New!

NO DOC FEES! **\$11,995**

C&C Cycle
Chariton, IA • 888-475-2243
www.cc-cycle.com

1040 CALVES 314 COWS LAST WEEK | EXPECTING 1400 THIS WEEK

OSBORN LIVESTOCK AUCTION
Located 7 miles West of Cameron on HWY. 36, OSBORN, MO

Barn Phone: (816) 675-2424
Danny (816) 649-8485
Transportation and Order Buying Available • Bonded • Insured

SALE EVERY WEDNESDAY | 11:00 a.m.

STEERS		HEIFERS	
300#	\$2.16		\$1.94
400#	\$2.12		\$1.85
500#	\$2.00		\$1.73
600#	\$1.88		\$1.66
700#	\$1.76		\$1.58
800#	(Potload 850#) \$1.63		\$1.57
900#	\$1.60		(Potload) \$1.56
1000#	\$1.51		\$1.42
1100# Fats	\$1.37		\$1.35
Top Cow:	\$0.75 - Chillicothe	Holsteins & Longhorns:	\$0.58-\$0.90
Top Bull:	\$1.08 - Lexington	Longhorn X & Dairy X:	\$0.91-\$1.18

2 COW DISPERSALS EVERY WEEK

Buying Butcher Cows & Horses Daily
We Have 9 Butcher Cow Plants Represented

RECEIVING HOURS: Daily until sale time

Owner, Jayme Walker 816-665-4277	Dale Coble, Fieldman 816-213-3581
Randy Vanderkooi, Fieldman 816-632-0694	Todd Gottswiller, Fieldman 816-390-7917
Ivan Kanak, Fieldman 816-724-1043	Gary Mann, Fieldman 816-294-5849
Frank Peterson, Fieldman 660-247-2306	Bill Bray, Fieldman 816-724-0438
	Gary Jackson, Fieldman 816-724-4348

OVER 30 40 USED HARLEYS Starting at \$6,995

C&C Cycle
Chariton, IA • 888-475-2243
www.cc-cycle.com

FOR SALE: New 3 pt. Tillers, Heavy Duty, Gear Driven, 7' to 12', Starting at \$4,050.
660-874-4455 12-23-22

FOR SALE: 24 Ft x 5 Ft Free-Standing Cattle Panels, Weighing 600 Lbs Each, Fastener Chains Included. Located in Troy, IA.
641-680-0892 TFN

FOR SALE: Ford 8N, Good Condition, \$1,800.
660-341-8089 TFN

AUTOMOTIVE

FOR SALE: 2018 Silverado 1500 LT 4x4 Crew Cab, Grill Guard, New Tires, Black Interior Exterior, 71K \$36,500. Unionville.
660-730-0843 11-18

FOR SALE: 1971 Chevy Chevelle 350 Auto, Black Inside And Out, Nice Paint, New Tires. CARGAR Wheels, Cruise Control.
\$31,500. Info. 573-248-6111 11-18

WAPELLO COUNTY, IOWA
LAND AUCTION
FRIDAY, NOVEMBER 18TH 10:00 AM
Bridgeview Event Center
102 Church St | Ottumwa, Iowa 52501

The Estate of Peggy McAllister
Adminstrer of the Estate:
Verle W. Norris

- 40 Acres M/L just east of Ottumwa
- Timberland with lots of hardwood trees
- Excellent Recreational and Hunting Opportunities

Mike Nelson: 641.223.2300
Jared Chambers: 641.414.0234

PEOPLES COMPANY
PeoplesCompany.com
Listing #16470




Attention Machinery Wanted

Start bring items November 1, 2022
Items Need To Be On Lot By 12:00 Noon Wednesday November 23, 2022

Unless we are full before that date Please call ahead

Auction Date:
Tuesday, December 6, 2022 @ 8:30 AM
When Machinery is brought to our lot, we handle everything from showing the equipment to loading. The Sale Barn offers a hassle-free way to sell and we pay our sellers 2 days after the auction!

Wanted: Tractors * Planters * Sprayers * Skidloaders
Tillage Equipment * Combines & Heads * Trucks * Trailers & Construction Equipment

Email Items To: salebarn@evertek.net
Rick & Kendra Winegarden ~ Owners ~ 712-335-3117
Rick's Cell ~ 712-358-0974

Online Bidding Provided By Equipmentfacts
Register to bid prior to auction
Website: salebarn.ncn.net

Pocahontas Machinery Auction
Auction Lot Located on Hwy 3 ~ 401 1/2 East Elm
Pocahontas, IA (The Big Red Shed)

MACHINERY AUCTION
Saturday, November 19 10:00 A.M.
LOCATION: 2439 Blue St Pella IA
Approxmatley 8 miles north of Pella

TRACTORS, COLLECTABLES, AND OTHER MACHINERY
JD 2750 WF D with JD 48 Loader new tires 6500 Hrs: 8N Ford: TO 20: JD 50: JD 70 NF 3PT new tires: JD 70 WF: 901 Ford 3 PT WF: Ford Jubilee: TO 3048: Farmall M NF: 55 AC WD 45: 95 3 horse slant trailer: 64 Ford Custom cab pick up odometer show 3861 miles: 3 JD 60s 1 with 3 pt: 06 Kawasaki 3010 mule: JD 4x4 Buck 4 wheeler: 59 GMC 300 truck with 10 ft stake box , slant 6, 29654 miles: 2004 GMC 3500 with 12 ft flat bed with gooseneck hitch: 2017 20ft Forrest Runner Wild wood camper, bumper hitch: HH 20 ft bumper hitch tilt bed trailer: 6x8 trailer: 20 ft Kiefer biit steel gooseneck livestock trailer with new axels: NH 78 square baler:8ft Rhino 4 way blade: 3 pt Ferguson disc: 4 sec harrow on cart: 5ft. box blade: King Kutter 3 pt rotary mower: King Kutter 3 pt cultivator: Sovema 5 ft. 3 pt tiller: 14 ft JD RWA disc: 2, 3pt blades: 3 older pull type sprayers:3pt lp weed burner: HYD log splitter: large amount of JD riding lawn mowers , consisting of 110s 112s 214 plus more : Grass hopper riding mower: MM D100 corn Sheller : JD 25 pull type combine: 2 old JD L manure spreaders: Wood Bros 16-4 one row corn picker: older JD rotary hoe: 1 row corn binder; 2 row JD check wire corn planter; multiple other old JD corn planters; Dearborn and Ford 2 bottom plows: old Dearborn spreader: a large amount of older barge an flair wagons ; 250 bushel gravity wagon: JD 3 pt sickle mower; 10 FT Bush Hog disc: 2 bottom pull type plow: Cat 3 quick hitch :wooden sleigh runners: copper double boiler: buzz saws; Maytag wringer washer: 3 pt cement mixer: one JD and one cub cadet Haban sickle mowers for lawn mowers; Pick wick chicken plucker: Plus more items to numerous to mention.

GRAIN BIN, TOOLS AND LIVESTOCK EQUIPMENT
GSI 10,000 bushel bin with dryer and stirrator: Large KEW hot water power washer: Co line cattle gates: cattle panels: steel poles fence braces: Fore Most cattle head catch: Roose bale forks: Cattle tanks: Post hole augers: log and tire chains: chicken nests: Horse feeder: Pig creep feeders: chain link fence and poles: Piles of used and new barn steel: wire winder: 100 gal LP tank; insulated large dog house: dog runs: Coats tire machine: Garden tillers: slate pool table:

Note: we are just starting to go through the buildings and loading trailers, we will find a lot more items, watch the website for the latest updated sale bill. We may need to run 2 rings at a time so be prepared. Lunch on grounds

OWNERS: RICHARD AND MARY TEACHOUT
SALE BY: Tri County Auction Co.

Announcements day of the sale take precedence over any written ad. Terms ;cash or good check
Brad Veenstra • (641) 780-4077 www.tricountyauction.com

ABSOLUTE FARMLAND AUCTION

Productive Row Crop, Cattle Pasture, Recreation Land

937 ACRES ± in BROWN COUNTY, KS

Selling in 7 Tracts - See Website for Photos and Maps

THURSDAY, DECEMBER 1 - 10:05 AM

Auction Location: Fairview Community Center, 201 E. Iowa St., Fairview, KS

TRACT 1 - 107 Acres m/l - Property location from Fairview, KS, East on US Hwy. 36 2-1/2 mi. to Falcon Rd., then North on gravel 1.6 miles. Located on the corner of 250th St. and Falcon Rd. Tract 1 features 107 Acres ± of rolling hill ground with some Mulberry Creek bottom. FSA records show 38.65 tillable acres with 17.19 acres in corn production this year. Balance is in grass, open timber and draws. Good to average fences for cattle, one pond, close to rural water, and excellent hunting. **TAXES:** \$987.08.



TRACT 2 - 77 Acres m/l - Located just North on Falcon Rd. to 260th St., then left (West) 1/2 mile on South side of road. Tract 2 features 77 Acres ± of good, gently rolling farmland with some creek bottom. FSA records indicate 68.84 cropland acres with 47.81 acres in corn production this year, and approx. 9.59 acres in pasture grass. The balance is in timber with some walnut trees. Farm as some diversion terraces and access to rural water. **TAXES:** \$1796.41.

TRACT 3 - 120 Acres m/l - Located from Tracts 1 & 2 on Falcon Rd. and 255th St., East approx. 1/2 mile on dirt road, on South side. Tract 3 features 120 Acres ± of gently sloping farmland with some terracing work. According to FSA records there are 87.11 cropland acres with 80.57 acres in soybean production this year, and approx. 6.59 acres of hay production, with the balance in timber with excellent hunting. There is an older structure in state of disrepair, and one well. **TAXES:** \$2512.76.

TRACT 4 - 78 Acres m/l - Located from Tract 3 East 1/2 mile to gravel Foxtail Rd., then North 1-1/2 mi. to Blacktop 270th, then East 3/4 mile, on South side of road at the corner of 270th St. and Goldfinch Rd. Tract 4 features 78 Acres ± of good rolling farmland with 66.84 cropland acres according to FSA records. This farm is in soybean production this year with approx. 63.82 acres, with the balance in waterways for hay production and some open timber. Diversion terrace work has been completed. This farm has excellent home site location with some long-range country views. Good fences for cattle and access to rural water. **TAXES:** \$2605.00.

TRACT 5 - 78 Acres m/l - Located back West on Blacktop 270th to the corner of 270th and Foxtail Rd., on the South side of road. Physical address 815 270th Street. Property features 78 Acres ± with 64.48 acres in cropland according to the Brown County FSA. There is 62.25 acres in corn production this year. Farm offers good soil types and is terraced with more acreage to be gained. There is a 3-4 bedroom home or rental property with unfinished basement, kitchen, living room/dining room combination, sink on south porch entrance/mud room, hardwood floors throughout, vinyl siding, newer thermal pane windows, good roof and rural water plus well. There is a new forced air furnace, electric water heater and AC. Older improvements include barn, smaller wooden shed for storage or carport, and others, one pond and fair to average fences. **TAXES:** 3,103.43.

TRACT 6 - 159 Acres m/l - Located from Morrill, KS, North 3 miles on Blacktop Dewberry Rd. to 320th St, then West 3 miles on the NW corner of 320th and Bittersweet Rd. Tract 6 features 159 Acres ± with 94.26 cropland acres according to FSA records with approx. 36.7 acres in soybean production and 56.11 acres in hay production, with the remainder of 64.29 acres in open pasture and timber for cattle with good fences. Great location for new home with blacktop frontage. **TAXES:** \$1,583.58.

TRACT 7 - 318 Acres m/l - Located at the Southwest corner of Tract 6 on 320th and Bittersweet Rd. Tract 7 features 318 Acres ± of gently rolling farmland with some Pony Creek bottom ground. This farm has older improvements in a state of disrepair. Some cross fences for cattle rotation and timber ground for calving and/or hunting retreat. FSA records indicate 137.74 cropland acres which at present shows 92.19 acres in corn production and 32.81 in soybeans this season. Balance is in pasture grass and hay production. Tract includes well and rural water access, some terracing and waterways in place. **TAXES:** \$5,450.14.

TERMS: 10% Down Payment Per Tract of good faith, non-refundable money to be made on day of sale entering into purchase agreement guaranteeing clear title with balance is due at closing on or before 30 days. **Each tract will be sold individually and will not be offered together in any combination.** Escrow to be held at Euler Law Offices, LLC, Troy, KS. Full possession to prepare for 2023 crop production will be given at closing. Property is being sold as is, where is. Statements made at time of auction take precedence over any advertising in print or online, printed documents, or previous statements. YAC, INC d.b.a. Younger Auction Company and its representatives are acting as exclusive agents of the sellers.

FERGUS FAMILY FARMS, LLC

Euler Law Offices, LLC, Troy, KS, Attorney for the Seller Mark Younger, Auctioneer Shannon K. Eason, Broker, 00218789



900+ LOTS ★ LARGE, 2-DAY COIN AUCTION

Dec. 3 - 10 am | Dec. 4 - 10:30 am

Younger Auction Gallery, 312 E. South Hills Dr., Maryville, MO

Featuring harder to find coins: Large Cents, Half Cent, Flying Eagle Cents, Two Cents, Three Cents, Half Dimes, Twenty Cent and Trade Dollar type; Hundreds of Proof and Mint Sets from 1956; early Silver Commemoratives; Error Coins, RPM's, Tokens and Medals; early standard issue U.S. coins of all denominations from Bust, Seated, Barber, to modern era silver and clad coinage; Gold and Silver Coins, Bullion, Currency; and a great selection of World Coins and Currency from the 1700's to modern.



MULTI-ESTATE GUN AUCTION

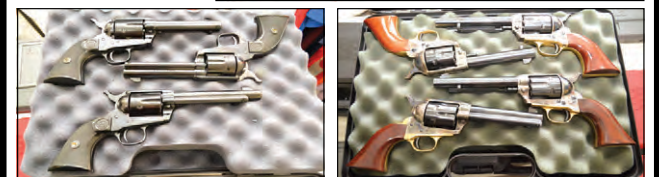
Featuring 200+ Guns – Military, Ruger Pistols & Rifles, S&W, Colts, Winchester, Marlin, German Walther P-38s, WWI & II Bayonets, Civil War Swords, and Ammo

Sat., December 10 - 10 am
Sun., December 11 - 11 am

Younger Auction Gallery, 312 E. South Hills Dr., Maryville, MO



Watch Website For Details!



We will abide by all Federal Firearm Laws – background checks will be required.



Mark Younger, Auctioneer
660-541-1977
Email: yac@youngerauction.com

For complete listings and more pictures visit our website
WWW.YOUNGERAUCTION.COM



ONLINE ONLY! *Online* **AUCTION** *OVER 300 LOTS!*

Lots Begin closing Saturday, Nov. 19 at 9AM
 Next day pickup Sunday, November 20 at 10AM
 Location: 1447 Cromwell Rd, Creston, IA
 Todd Crill Auctions Building
 Register at Proxibid.com/toddcrillauctions to bid

- Ertl/Scale Models/Franklin Mint/Precision Series Farm Tractors/Implement Toys (Over 40 Lots) (NIB)**
 - 1/8th scale models 560 and M
 - 1/16 Precision Series 560 w/2MH corn picker
 - Franklin Mint Precision F-20 1/12th and Allis WC
 - 1/16th Precision Series Regular, M and Little Genius Plow, Allis WC
 - Danbury Mint 8N Ford, JD 8200 Tractor, JD Forage Harvester & Rotary Hoe
 - Many other Farmall, International and Allis Chalmers Toys new in box
 - Lionel and Life Like Trains**
 - Lionel/Snap-On complete Ready to Run 0-27 train set, NIB
 - Life Like freight line USA, complete HO scale diesel train set, NIB
 - Lionel animated billboard
 - Lionel/Snap-On box car with lights
 - Other Lionel train items
 - Other Misc Brand Name Toy Items**
 - Hot Wheels, Star Wars, GI Joe, Toy Story and other vintage collector toys, most NIB
 - Vintage and Antique Toys
 - 1920's Turner Toys dump truck
 - J. Chein and Co. windup train and popeye toy
 - Mar Toys Milk and Cheese Truck
 - Flash Gordon Signal Pistol
 - Vintage Hafner Stream Line Train set
 - Arcade and other misc cast iron toys
 - Toy Tinkers Rowly Boat in orig. box
 - Structo Toys
 - 30-40 MAD Magazines 70's-90's
 - Snap-On, Napa and other Die Cast Toys, nearly all new in box, over 160 lots**
 - Snap-On Thundering 30's Service Station Display, NIB, 1/24 scale
 - (2) Snap-On 1950's Garage NIB, 1/24 scale
 - Snap-On Modern Garage NIB 1/24 scale
 - Snap-On Custom Glo-Mad Garage Diorama, NIB 1/24 scale
 - Snap-On 1/8 scale KRL Series Workstation Bank NIB
 - Over 35 additional Snap-On die cast toys, new in box
 - (9) Napa (Nylint) 1/24 scale semi tractor/trailers, NIB
 - Napa ceramic lighted store
 - First Gear 1960 Mack B-61 wrecker
- Auctioneer Comments: Great collection of modern toys, auto repair types including Napa, Snap-On, Ertl and some antique and vintage toys! Remember Christmas is right around the corner and lot of this is new in box items! Happy bidding and Happy Holidays! - Todd & Michelle*

Mike & Vicki Sickels, sellers

Auction conducted by
Todd Crill Auctions, LLC, Creston, IA
Todd Crill, Auctioneer - 712-621-1453
 Michelle Crill, Auction Coordinator - 641-745-9223
 www.toddcrillauctions.com or follow us on facebook
 Auction Company not responsible for accidents, thefts or fire.
 Online Bidding at proxibid www.proxibid.com/toddcrillauctions

PAPER DEADLINE

- **DISPLAY ADS - Monday, November 21st - 5:00 PM**
- **CLASSIFIEDS - Tuesday, November 22nd - 11 AM**

The Office Will Be Closed November 23th - 25th

**The Hawkeye Trader
 641-675-3971**



FOR SALE: 2007 Silverado LT, 4x4, Crew Cab, New Body Style 5000 On Rebuilt Engine, 175K, Silver \$14,500. Unionville. 660-730-0843 11-18

MISC

FOR SALE: Like New Mossberg 835 Shotgun Combo, Has Rifled Slug Barrel With Sights, Tapped For Scope, Shoots 3 1/2 Inch Shells, Camo In Color With Sling, \$500. 573-588-4518 11-11

LIVESTOCK

FOR SALE: Bumper Hitch Stock Trailer, 6 Ft. X 18 Ft., New Tires And Rims, New Brakes And Drums, Bearings Repacked, All New Wiring, LED Lights, Good Title, \$6,400 OBO. 641-919-9117 11-18

FOR SALE: Lift Chair, Flex Steel, Near New, Medium Brown, Lady Used, \$674 Cash ONLY. Milo, IA 515-669-3838 11-11

FOR SALE: 10 Outstanding Sim/Angus Bulls 14 Months Old Black, Polled. Paul Martin, Shelbina. 573-822-4216 11-18

BUYER OF STANDING TIMBER: Walnut & Soft Maple Are Our Specialty; Also Other Species. Bonded & in Business for 30 Years. We Pay Before Cutting. Gingerich Sawmill LLC, Bloomfield, IA. 641-722-3002 11-11

BULLS FOR LEASE: Over 70 Registered Angus & Hereford To Choose From. 90 Day Lease \$900. Trucking Available At Extra Charge. Kingdom City, MO. 573-999-3197 TFN

J & J ROOFING & SIDING: Call For Your Roofing And Siding Needs. 641-638-2402 11-11

FOR SALE: Remington 700 Youth Model 243 Cal. With 3x9x40 Scope. Like New. 3 Boxes Of 257 Weatherby Shells, And Several 308 Military Shells. 660-651-3722 11-11

FARM PRIMITIVE ESTATE AUCTION Sat, November 26th - 2022 @ 9:00 a.m.

Five Star Auction Bldg • 2530 Hwy 22, Riverside, IA

Farm Primitives: Industrial Heavy Duty Cart; Dump Rake; Steel Wheels; Wringer Washing Machines; Lots of Galvanized Tubs & Buckets; Hog Oilers; Crockes; Cast Iron Seats; Metal Seats; Farm Tools; Hay Forks; Misc Farm Items.

Vintage & Antiques: Furniture; Windows & Doors; Washtubs; Trunks; Nail Kegs; Egg Baskets; Bed Frames; Cast Iron Kettles; Gas Cans; Wooden Ladders; Canning Jars & Much More.

Full Listing Coming Next Week!!

Watch Website for Pictures.

Open House: All Day Friday, November 25th, 10:00 AM - 8:00 PM

**Jacob Schrock Estate
 A.J. Boughten Estate & Others**

NOTE: Items need to be removed in 1 week.

Terms: Cash or Check w/ID. Not responsible for accidents or theft. All announcements day of auction supercede previous ads.



Auctioneers:
 Delmar Yoder 319-430-2711
 Lonnie Miller 319-461-0019
5starauction.com

VIRTUAL ONLINE



WRIGHT COUNTY, IOWA LAND AUCTION

TUESDAY, NOVEMBER 15, 2022 AT 1:00 PM^{CDT}



236.63 DEEDED ACRES± • 2 TRACTS

The Mosher Farms are located in Sections 25 & 35, Grant Township, Wright County, Iowa. (4 miles east of Clarion, Iowa.)
Mark your calendars now for this upcoming Wright County, Iowa land auction. These farms offer highly productive Nicollet, Bode and Clarion soils. Tract 1 features a CSR2 of 79.9 and Tract 2 boasts a CSR2 of 86.6! Both tracts sell free and clear for the 2023 crop year and we urge you to take a look at these farms that are conveniently located just east of Clarion, Iowa.

KENNETH MOSHER TRUST
FIRST CITIZENS BANK, TRUSTEE FOR THE MOSHER TRUST
ROBERTA CORNELIUS - TRUST OFFICER | MASON CITY, IOWA

Attorney: Richard E. Bordwell | Richard E. Bordwell Law PLC
 120 Central Avenue West, Clarion, IA | (515) 532-2851

Auction Managers: Jim Huff (319) 931-9292
 John Probasco (641) 856-7355 & Matt Sullivan (844) 847-2161

TIMED ONLINE | NO-RESERVE



FARM RETIREMENT AUCTION

BIDDING CLOSURES: WED., NOVEMBER 16, 2022
STARTING AT 10:00 AM^{CDT}

PHYSICAL ADDRESS: 24237 STATE HIGHWAY H, UNIONVILLE, MO




HIGHLIGHTS: '09 John Deere 7130 Premium MFWD tractor, 5,845 hrs. - 2 owner; '13 John Deere 569 round baler - 2 owner; '16 John Deere 630 MoCo - one owner; Kuhn SR110 Speedrake 10-wheel hay rake; '94 Cat D6H XL dozer, 20,583 hrs.; '98 John Deere 1518 15' batwing mower; International 45 Vi-brashank 18' field cultivator; 18' harrowgator; John Deere 2-bottom pull-type plow; Golden Sun Feeds portable creep feeder; Feed King portable creep feeder; PCM 6-bale hay trailer; 10' flare box wagon w/ roof; (6) Priefert 12' corral panels; (4) Feed train 10' stationary feed bunks; 11' feed bunk; (3) Silver bale rings; (2) Older bale rings; Quantity of used wooden posts; Pallet of new barb wire; Calf puller; 2017 W-W 16' livestock trailer; 2-prong bale spear; Also selling farm support items, tools & misc. items.

JOEL CHILDERS (660) 216-8020
Auction Manager: John Probasco (641) 856-7355

TIMED ONLINE | NO-RESERVE



FARM RETIREMENT AUCTION

BIDDING CLOSURES: THURS., NOVEMBER 17, 2022
STARTING AT 10:00 AM^{CDT}

PHYSICAL ADDRESS: 7000 ELY ROAD, CEDAR RAPIDS, IA




HIGHLIGHTS: '02 JD 8120 MFWD tractor, 4,640 hrs., one owner, Gold Key; '88 JD 4050 2wd tractor, 9,718 hrs.; '79 JD 4240 2wd tractor, 7,993 hrs.; '59 JD 630 2wd tractor, showing 3,556 hrs.; '10 JD 9570STS 2wd combine, 1,990 eng./1,325 sep. hrs.; '11 JD 608C 8 row 30" corn head; '08 JD 625F 25' HydraFlex platform; JD 70 skid loader; Kinze 2500 8/15 row Interplant planter; DMI ET2500B 5 shank 3-pt. inline ripper; JD 220 17.5' disc; JD 6 row 30" 3-pt. cultivator; JD F145H 4 bottom plow; Kory 225bu. gravity wagon; Century 750 gal. pull type sprayer; Clark 11 knife 3-pt. NH3 applicator; 18' harrow gator; JD CX15 15' batwing mower; JD 925 9' disc moco; H&S BT814 8 bale hay trailer; Gehl 420 10 wheel V-rake; JD 640 hay rake; Feterl 10" x 62' swing away auger; JD 6' x 12' barge box on JD 953 gear; Long 1199A 3-pt. backhoe; Farm Fans AB-12B portable grain dryer; '11 Chevy Silverado 3500HD 4wd dually pickup; '95 Ford F350 XLT 4wd pickup; '98 Ford Aeromax day cab semi; '10 Jet 38' steel hopper bottom grain trailer; '06 Jet 102" x 53' step deck semi-trailer; '04 Road Boss 32' flatbed trailer; '90 Chaparral 7' x 20' steel livestock trailer; Also selling farm related & support items. **ROBERT ZAHRADNIK (319) 270-1458:** '67 JD 3020 2wd tractor. **JAMES GARNANT (319) 361-0226:** '69 JD 4020 2wd tractor; '12 JD 2210 56' field cultivator; '09 JD 843 loader. **WILLIAM PEP- PER (319) 389-8014:** '55 Farmall 400 2wd tractor, showing 296 hrs.

ZAHRADNIK INC
NORMAN & TERRY ZAHRADNIK (319) 360-6253
Auction Managers:
 Jim Huff (319) 931-9292 & Jeff Hoyer (319) 759-4320

TIMED ONLINE | NO-RESERVE



FARM ESTATE AUCTION

BIDDING CLOSURES: MON., NOV. 21, 2022
STARTING AT 10:00 AM^{CT}

PHYSICAL ADDRESS: 17098 FAWN AVE., DRAKESVILLE, IA
INSPECTION DATE: FRI., NOV. 18TH • 10:00 AM - 3:00 PM



HIGHLIGHTS: '07 JD 7420 MFWD tractor, 5,018 hrs.; '06 New Holland TG305 MFWD tractor, 5,541 hrs.; '80 Case 2090 2wd tractor; JD 3020 2wd tractor, showing 5,359 hrs.; Ford 5000 2wd tractor; Cat D6C dozer, 2,465 hrs.; '14 Ford F-150 4wd pickup, 61,800 mi.; '18 JD XUV 835M Gator, 2,318 mi., 393 hrs.; '04 Cougar by Keystone 30' 5th wheel camper; Kelly Ryan 2W04 "Big Bagger" silage bagger; Hesston 1340T 12' moco; Vermeer R2300 twin rake; Meyers 2400 manure spreader; JD 3960 forage harvester; JD FH25 1 row 3-pt. forage harvester; New Holland 352 grinder mixer; (2) Cox Feed King 2-ton creep feeders; Thompson & Gill 73L portable cattle hoof trimming chute; Paul Livestock Scale 305 portable livestock scale; 4 bale hay trailer; Kewanee 500 45' hay/grain elevator; JD 68AW (3) compartment auger wagon; Grain-0-Vator 10 auger wagon; Shaver 8 front mount hyd. post driver; Hesston 1340 12' moco; '12 JD HX15 15' batwing mower; JD MX7 7' 3-pt. rotary mower; Friesen 110 single compartment seed tender; AC 108 10 yard dirt scraper; Turbo Saw hyd. tree saw; Tote 5 ton SS fertilizer spreader; (2) EZ Flow 225 bu. gravity wagons on JD 953 gear; '81 Kenworth W900 day cab semi; '75 International 1700 Loadstar single axle truck; '03 Wilson DWBT650 42' belt trailer; '06 WW 7' x 24' alum. livestock trailer; '53 Transport 30' low boy trailer; Chaparral 6' x 14' livestock trailer; JD 235 18' disc; Krause 18' disc; International 37 10' disc; Remington Delta 28' pasture harrow; Brillion 10' culti-mulcher; Ford 26' field cultivator; JD 14' 3-pt. rotary hoe; IH, MF & AC 5 bottom semi mount plows; Also selling farm support items.

JACK HENDERSON ESTATE
EQUIPMENT QUESTIONS: MARK HENDERSON (641) 777-6056
& DAVID HENDERSON (641) 799-3857
Auction Manager: John Probasco (641) 856-7355

TIMED ONLINE | NO-RESERVE



FARM RETIREMENT AUCTION

BIDDING CLOSURES: SATURDAY, NOVEMBER 26, 2022
STARTING AT: 10:00 AM CENTRAL

PHYSICAL ADDRESS: 156 WASHINGTON AVE, OXFORD JUNCTION, IA




HIGHLIGHTS: '06 John Deere 8130 MFWD tractor, 1,272 hours; '92 John Deere 4560 2wd tractor, 4,034 hours; '91 John Deere 3255 MFWD tractor, 3,532 hours; '03 John Deere 9450 2wd combine, 1,397 eng./930 sep. hours; '03 John Deere 693 6 row 30" corn head; '00 John Deere 920F 20' flex platform; '05 John Deere 1760 12 row 30" planter; '02 John Deere 1780 6/11 planter; Case-IH 5100 13' grain drill; ADS 2-box seed tender; '04 Kinze 650 grain cart; Brent 644 gravity wagon; Parker 605 gravity wagon; (3) Brent 444 gravity wagons; (2) Brent 440 gravity wagons; Buhler Farm King 1080 10"x80' swing-away auger; Westfield MXK1063 10"x63' swing-away auger; Mayrath 8"x60' swing-away auger; Sukup 4" air blower system; 150' of 4" grain air pipe; Dickey John GAC2100 moisture tester; '10 Krause 6200 24' soil finisher; Kewanee 89 21' culti-mulcher; John Deere 2700 5-bottom mounted plow; Glencoe 11-shank disc-chisel; John Deere 709 7' 3-pt. rotary mower.

AUCTIONEERS NOTE: Exceptional line of well maintained, low hour, farm machinery. NO BUYERS PREMIUM.

JOE DRIVER
Equipment Questions: Joe Driver (309) 230-6942
Auction Manager: Luke Sullivan (309) 371-5214



SULLIVAN AUCTIONEERS, LLC

CONSIDERING AN AUCTION? CONTACT US TODAY!

(844) 847-2161

WWW.SULLIVANAUCTIONEERS.COM

LICENSE #44400107

TIMED ONLINE | NO-RESERVE

FARM RETIREMENT AUCTION

BIDDING CLOSURES: WEDNESDAY, NOVEMBER 30, 2022 STARTING AT 10:00 AM^{CT}

PHYSICAL ADDRESS: 1720 180TH STREET, GARNER, IA

INSPECTION DATE: MON., NOV. 28TH • 10:00 AM - 3:00 PM



HIGHLIGHTS: '00 Case-IH CX100 MFWD tractor, 3,532 hrs.; '98 JD 8100 2wd tractor, 9,156 hrs.; '95 Ford Versatile 9680 4wd tractor, 6,994 hrs.; '82 JD 4640 2wd tractor, 9,601 hrs.; '75 JD 4430 2wd tractor, showing 2,642 hrs.; '74 JD 4430 2wd tractor, 8,731 hrs.; '73 JD 4430 2wd tractor, showing 3,925 hrs.; '68 JD 3020 2wd tractor, showing 6,439 hrs.; Massey Harris 44 Special 2wd tractor; '09 JD 9870 STS 2wd combine, 2,876 eng./ 2,033 sep. hrs.; '14 MacDon FD75-S 40' flex draper head; '09 Drago N8TR 8 row 30" chopping corn head; Industrias America 44' head cart; Unverferth HT30 30' head cart; 1250/45-32 drive tires off JD 9870 combine; Ag Chem 6203 Terragator sprayer; Terragator 1603 sprayer, 6,975 hrs.; Fast 7400 pull type sprayer; '10 Case-IH 1250 Early Riser 16 row 30" CCS planter; JD 7000 12 row 30" planter; Tye 20' 3-pt. grain drill; Ag Systems Nitrofill 6500 16 row 30" NH3/ dry fertilizer strip till bar; DMI tiger-mate II 50' field cultivator; DMI 730B eco-lo-tiger 7 shank disc ripper; JD 235 23.5' disc; Kewanee 1000 24' disc; JD 2800 5 bottom plow; Killbros 1820 grain cart; (5) Brent gravity wagons; Unverferth 630 gravity wagon; Parker 5500 gravity wagon; Behlen 300 bu. gravity wagon on HD gear; Bushnell 225 bu. gravity wagon on gear; (2) Kory 225 bu. gravity wagon on gears; (2) Sukup T1611A 16' galvanized portable grain dryers; (2) Westfield MK100-71 10" x 71' swing away augers; Westfield W100-31 10" x 31' truck auger; Grain King 10" x 72' swing away auger; Mayrath 10" x 32' truck auger; 8" x 44' auger; Peck hyd. drive portable truck hopper; 6' x 10' steel barge box on JD gear; S&R Mfg. STJ700 "The Dump Truck" manure spreader; Mills Mfg. Power Spread 700V manure spreader; Agro-Power 1200X4 "Automatic Earcorn Mill; Luck/Now 2420 vertical mixer; Gehl 8285 "total mix" feed wagon; Artsway Silomix 800 feed wagon; Gehl 7285 feed wagon; New Holland 8 16' silage wagon on New Holland tandem axle gear; (3) Gehl silage wagons on Gehl tandem axle gears; Massey Ferguson DM1308 8' 3-pt. disc mower; M&W RC456 10 wheel V-rake; JD 640 4 bar hay rake; JD 150 silage blower; Gehl 1540 silage blower; H&S 430 manure spreader; 6' x 16' hyd. hog cart; Palco 2085RTC portable cattle working alley/tub combo system; Pearson S032 portable cattle working chute; Palco loading chute; Loftness 180VP 15' stalk chopper; Shop built 10' box blade; 1000 gal. poly nurse tank on JD 1065 gear; 1000 gal. poly nurse trailer; Schweiss 8' 3-pt. snowblower; Danuser F8 3-pt. post hole digger; WinPower 15/10PTOD PTO generator; Big John 60 gal. 3-pt. mister; Stout HD72-3-Open 72" rock/brush grapple bucket; '73 Chevy cab over truck; '98 Kiefer ILGF-1828 8' x 28' flatbed trailer; 13' steel dump trailer; Older Triggs steel livestock trailer; '14 Chevy 2500HD Silverado 4wd pickup; '00 Chevy 3500 4wd; '84 Dodge 350 Custom Power Ram 4wd pickup; '02 Chevy Impala 4 dr.; '04 Bobcat S250 skid loader; '08 Polaris Ranger 700 Twin 6 x 6 UTV; '01 Honda TRX500FA Foreman Rubicon 4wd ATV; JD X495 lawnmower; Also selling other farm equipment, farm support items & tools.

**ROBERT BUCKLEY ESTATE
BONNIE HACKMAN - ADMINISTRATOR**

FOR ADDITIONAL INFORMATION CONTACT AUCTION MANAGERS: John Probasco (641) 856-7355 & Jim Huff (319) 931-9292

VIRTUAL ONLINE

CLARK COUNTY, MISSOURI LAND AUCTION

THURSDAY, DECEMBER 1, 2022 AT 11:00 AM^{CT}



The farm is located approximately 3 miles southwest of Kahoka, MO or approximately 24 miles east of Memphis, MO in Section 35, T65N•8W, Lincoln Township, Clark County, MO.

Farm represents productive tillable cropland, prime Northern Missouri White-tail Deer & Wild Turkey Hunting acreage, as well as ideal rural building sites!

- ✓ **PRODUCTIVE TILLABLE CROPLAND!**
- ✓ **PRIME RURAL BUILDING SITES!**
- ✓ **EXCELLENT HUNTING/RECREATIONAL ACREAGE!**

THE ESTATE OF DENNIS W. MOLDENHAUER

Representing Attorney: David Rouner | Rouner Law Office LLC
400 N. Franklin Street | Kirksville, MO 63501 | (660) 665-8324

Closing & Title Work: Oak Hills Title Co.
307 Lewis Street | Canton, MO 63435 | (573) 288-4461

Auction Managers:
Bill Fretwell (660) 341-7735 & Jennifer Wood (217) 257-8812



TWO DAY | TIMED ONLINE | NO-RESERVE DEALER & FARMER AUCTION

BIDDING CLOSURES: MONDAY & TUESDAY, DECEMBER 19TH & 20TH
STARTING AT 8:30 A.M. CT BOTH DAYS

ITEMS WILL BE LOCATED AT SULLIVAN AUCTIONEERS' FACILITIES IN ILLINOIS, INDIANA,
MINNESOTA AND OTHER OFFSITE LOCATIONS.



**CONSIGN
NOW!**



WHITETAIL PROPERTIES REAL ESTATE

HUNTING | RANCH | FARM | TIMBER

WE SELL LAND

Appanoose Co, Iowa - 78 +/- acres. This hunting farm has rolling terrain, mature timber, brush, creek, food plots, machine shed, building site, CRP income, and precious views. **SOLD**

Appanoose Co, Iowa - 134 +/- acres. Located on the northeast fringe of Centerville lies this attractive farm. It includes income-producing acres, wildlife habitat, and excellent hunting opportunity. **SOLD**

Davis Co, Iowa - 80 +/- acres. Located in Iowa, is primarily tillable with two seclude. **PENDING**

Davis Co, Iowa - 391 +/- acres. Since 2009, one of the original Quality Deer Management Association members. His family, have built this completely turnkey whitetail hunting paradise known as Fox River Farm. **SOLD**

Des Moines Co, Iowa - 160 +/- acres. This property offers a secluded home, high-quality tillable, timber, and CRP income. **SOLD**

Henry Co, Iowa - 9.37 +/- acres. This beautiful acreage near Highway 34 and Mount Pleasant includes a stocked pond, CRP income, and timber. **PENDING**

Henry Co, Iowa - 29 +/- acres. This property on Cedar Creek is right in the heart of southeast Iowa. **PENDING**

Henry Co, Iowa - 80 +/- acres. This desirable property will appeal to buyers who want to live in the Mount Pleasant or have a recreational getaway in southeast Iowa. **SOLD**

Henry Co, Iowa - 127 +/- acres. Thanks to this property's diverse wildlife habitat and Skunk River/Cedar Creek frontage, you'll enjoy excellent hunting, fishing, and recreation. \$628,650

Henry Co, Iowa - 224 +/- acres. This vast property along southeast Iowa's Skunk River is home to trophy bucks, pheasant, quail, turkey, and waterfowl. It generates over \$28,000 annually from CRP and the grain bin. \$1,254,400

Jefferson Co, Iowa - 55 +/- acres. Tucked away on a secluded timber hilltop stands this extraordinary custom home in the southeast Iowa countryside, just a short distance south of Fairfield. \$1,410,000

Jefferson Co, Iowa - 93 +/- acres. Whitetail Properties Real Estate is excited to present this farm that offers the coveted 50/50 blend of tillable and timber. \$581,240

Jefferson Co, Iowa - 723 +/- acres. This mile and a-half wide farm in southeast Iowa generates over \$99,000 in annual income and has the ideal layout for growing, holding, and hunting mature bucks. \$4,229,550

Jefferson/Van Buren Co, Iowa - 511 +/- acres. This breathtaking farm has timber, topography, and CRP income. Currently a high-fence game preserve, it is perfect for non-resident landowners. **PENDING**

Johnson Co, Iowa - 40 +/- acres. As a Land Specialist, this is one of the finest properties I've been offered. It is waiting for a perfectly located property to build a dream home, here is your opportunity. **PENDING**

Johnson Co, Iowa - 42 +/- acres. Whitetail Properties Real Estate is proud to offer this exclusive property near Solon, Iowa. It is a beautiful and secluded property near Solon, Iowa. **PENDING**

Johnson Co, Iowa - 81.5 +/- acres. Located eight miles east of Solon lies this beautiful farm that has secluded acreage, abundant wildlife, grand old Oak trees, and an amazing building site view. **SOLD**

Lee Co, Iowa - 145 +/- acres. This farm gem has an amazing layout, and it's dialed in to hunt for the 2022 whitetail season! \$895,375

Lee Co, Iowa - 281 +/- acres. This large wildlife sanctuary consists of a nineteen-year-old, regenerating wetland habitat situated along southeast Iowa's Des Moines River. \$399,000

Van Buren Co, Iowa - 23.9 +/- acres. Enjoy freedom at its finest on this beautiful country acreage. It is waiting for the perfect property with a great view of Iowa; this may be the one. **PENDING**

Van Buren Co, Iowa - 67 +/- acres. This property near Cedar Creek has a proven history of big mature trophy bucks and has been in the same family for 71 years! **SOLD**

Van Buren Co, Iowa - 77 +/- acres. You couldn't draw up a more perfect layout for bow hunting. It generates a solid annual payment for CRP; area for trophy whitetails. **PENDING**

Van Buren Co, Iowa - 127 +/- acres. This farm offers excellent hunting and solid income in an area that is a premier location for monster whitetails. **PENDING**

Van Buren/Henry Co, Iowa - 467 +/- acres. Once in a lifetime, highly managed and cared for property in southeast Iowa. **PENDING**

Washington Co, Iowa - 13 +/- acres. This acreage sits conveniently across the road from Lake Darling State Park and includes a home and a stocked 2-acre pond. \$361,000

Washington Co, Iowa - 25.03 +/- acres. This property on the county line along the Henry/Washington border is a perfect property to either hobby farm, pleasure, or great property for your business. **PENDING**

Clarke Co, Iowa - 26.41 +/- acres. This is a rare opportunity at a property that has endless opportunities for use. \$215,000

Decatur Co, Iowa - 40 +/- acres. Located 3/4 mile off of the hard surface road is a potential build site with views. \$218,000

Lucas Co, Iowa - 13.58 +/- acres. This property has a 2 bedroom house, 2 bedroom cabin, and CRP income. It also sits on 13.58 acres of diverse wildlife habitat. **PENDING**

Lucas Co, Iowa - 17 +/- acres. This property offers CRP income that generate approx. \$215/acre annually. **PENDING**

Marion Co, Iowa - 64 +/- acres. This farm is very diverse when it comes to wildlife and has CRP income-producing acres. \$396,800

Ringgold Co, Iowa - 3 +/- acres. This property has a house and multiple buildings and sheds that offers quiet country living. \$164,000

Ringgold Co, Iowa - 40 +/- acres. This 40 offers a lot when it comes to recreational value and CRP income. There is lots of good whitetail hunting on this property. **PENDING**

Ringgold Co, Iowa - 12 +/- acres. This property has CRP income-producing acres enrolled in CRP and CRP income. **PENDING**

Ringgold Co, Iowa - 147 +/- acres. This property offers great income production with the majority of the acres enrolled in CRP and has great hunting and fishing opportunities. \$855,000

Taylor Co, Iowa - 325 +/- acres. This property offers a high-income producing CRP contract, a beautiful 10-acre pond, and recreational opportunities with hunting and fishing! \$1,845,000

Union Co, Iowa - 80 +/- acres. Property could convert to tillable very easily if the new owner decides to farm it once CRP expires \$525,000

Union Co, Iowa - 277.68 +/- acres. Located in a high management area, is a diverse property with great ROI. \$1,350,000

Wayne Co, Iowa - 31 +/- acres. This property is located right off of Highway S26 just south of Solon. **PENDING**

Wayne Co, Iowa - 119 +/- acres. Top notch combo/rec farm with a home and large shop. \$900,000



BEN HARSHYNE

Licensed in Iowa

319.853.1162



RICH BAUGH

Licensed in Iowa

319.750.9273



GABE ADAIR

Licensed in Iowa

515.971.8182

TO VIEW THESE PROPERTIES AND HUNDREDS MORE GO TO

WHITETAILPROPERTIES.COM



Whitetail Properties Real Estate, LLC DBA Whitetail Properties, DBA Whitetail Trophy Properties Real Estate LLC. Licensed in CO, MN, ND, SD, TN & WI - Jeff Evans, Broker. Licensed in FL, KS & MO - Jefferson Kirk Gilbert, Broker. Licensed in TX & NM - Joey Bellington, Broker. Licensed in IN - Bill Minor, Broker. Licensed in AL, GA, LA, & MS - Sybil Stewart, Broker. Licensed in TN - Tim Burnette, Broker. Licensed in TN & MS - Josh Monk, Broker. Licensed in AR - Anthony Chrisco, Broker. Licensed in NC, SC, VA - Chip Camp, Broker. Licensed in IA, NC - Richard F. Baugh, Broker. Licensed in MI - Edmund Joel Nogaak, Broker. Licensed in IL, MD, WV - Debbie S. Laux, Broker. Licensed in ID, MT, OR, UT, WA, WY & NV - Aaron Milkien, Broker. Licensed in NY - John Myers, Real Estate Broker. Licensed in OK - Dean Anderson, Broker. Licensed in KY - Derek Fisher, Broker. Licensed in OH - Jeremy Schaefer, Principal Broker. Licensed in NE & SD - Jason Schendel, Broker. Licensed in MS - Chipper Gibbs, Broker. Licensed in PA - Jack Brown, Broker.

