



PAPER DEADLINE

• DISPLAY ADS •

Monday, November 21st - 5:00 PM

• CLASSIFIEDS •

Tuesday, November 22nd - 11 AM

**The Office
Will Be Closed
November 23th - 25th**

The Hawkeye Trader
641-675-3971

Vol. 20 No. 46
November 18, 2022

 **FREE** Every
Friday
www.hawkeyetrader.com

YOUR
T HAWKEYE
TRADER

Phone: 641-675-3971 • Fax: 888-203-9720 • E-Mail: ads@hawkeyetrader.com

Post Frame Buildings



- Shop Houses
- Metal Roofing
- Free Estimates

NISLEY
CONSTRUCTION

641-203-6663

Quality to Last a Lifetime



Upcoming Auctions

Noot Equipment Online Auction
Marion, ND | Closes: November 21 at 10AM

Melroe Farm Retirement Online Auction
Gwinner, ND | Closes: November 21 at 12PM

Stutsman & Foster County, ND Land Auction - 754± Acres
Carrington, ND | November 22 at 10AM

Online Hay Auction - Quality Tested
Steffes Group, Litchfield, MN | Closes: November 22 at 12PM

Steffes Online Auction - 11/23
All Locations | Closes: November 23 at 10AM

McLeod County, MN Land Online Auction - 366± Acres
Hutchinson, MN | Closes: November 23 at 1PM

McPherson Farm Retirement Auction
Norwalk, IA | November 29 at 10AM

Barnes County, ND Land Online Auction - 160± Acres
Tower City, ND | Closes: November 29 at 10AM

Arndt's Tire Shop Online Auction
Chokio, MN | Closes: November 29 at 10AM

Mikkelsen Farms Retirement Online Auction
Devils Lake, ND | Closes: November 29 at 12PM

Spurley Dairy Farm Retirement Equipment Online Auction
Linden, WI | Closes: November 29 at 1PM

Adrian Farms Equipment Online Auction
Mountain Lake, MN | Closes: November 29 at 7PM

CMM Dairy, Inc. Cattle Retirement Online Auction
Anamosa, IA | Closes: November 30 at 10AM

Jones Parts & Inventory Online Auction
Brownsdale, MN | Closes: November 30 at 11AM

Lunde Farm Retirement Online Auction
Lake Park, MN | Closes: November 30 at 12PM

BRR Farm Equipment Online Auction
Olivia, MN | Closes: November 30 at 1PM

Staebell Farms Inc. Equipment Online Auction
Jesup, IA | Closes: November 30 at 1PM

Timec Services Realignment Online Auction
Dickinson & Killdeer, ND | Closes: November 30 at 2PM MST

Worth County, IA Land Online Auction - 76± Acres
Lake Mills, IA | Closes: November 30 at 4PM

Portner Farm Retirement Online Auction
New Ulm, MN | Closes: November 30 at 7PM

Labat Farm Retirement Online Auction
Milroy, MN | Closes: November 30 at 7PM

Hagen Brothers Partners Farm Retirement Auction
Sacred Heart, MN | December 1 at 10AM

Walsh County, ND Land Online Auction - 40± Acres
Hoople, ND | Closes: December 1 at 10AM

More auctions listed at SteffesGroup.com

319.385.2000 | Steffes Group, Inc., 2245 East Bluegrass Road, Mt. Pleasant, IA

20' & 40' Storage Containers
Starting at \$1,895
For Sale or Rent



ABC Portable Storage
Delivery Available
563-299-2901

TINY HOMES

WE GOTTEM

573-881-3283

AG RELATED

FOR SALE: Very Nice
WL 42 Loader With QT
Bucket Off 706 IH, \$5,500.
Pomeroy, IA.
712-299-6608 12-2

WANTED: New Leader
3020 Lime Box, 16 Or 17
Ft. With Belt Over Chain
Conveyor To Mount On
Tandem Truck.
641-990-1249 11-18

FOR SALE: 2020 Simplicity
Compact Utility Tractor
With Quick Attach Front
Loader And Bucket, 33 HP
Vanguard Engine, Hydro,
4x4, 206 Hrs., 3 Pt., 61 Inch
Drive Over Deck, Excellent
Condition, \$10,800.
641-572-0061 11-18

5-STAR SPRAY FOAM INC.
BROOKLYN
MONTEZUMA

**WE NOW OFFER CONCRETE
RAISING & LEVELING**

Open Cell & Closed Cell Foam
Call or Email Craig
641-328-4163
fivestarsprayfoam@gmail.com
NEW CONSTRUCTION, REMODELS, POLE BARN
CRAWL SPACES, ATTICS & MORE
Free Estimates • Fully Insured
WWW.5STARSPRAYFOAM.COM

DES MOINES DIESEL INC

Servicing All Your
Diesel Fuel
Injection Needs

**Pumps,
Nozzles &
Turbos**

Ag & Truck Performance Parts

1-800-475-6086 • 515-265-7318
3211 Delaware Ave Des Moines, IA 50313
1 Blk E. of the ADM Soybean Plant

FOR SALE: JD 6620
Combine, Turbo And
Hydrostat, Good Condition
But Noise In Motor, Make
Offer; JD 6600 Late Model,
Runs Out Good; 16 Ft.
Bean Head On Cart, Poly
And Stainless Steel; 1968
Dodge 600 With Bed And
Hoist, Fenders Open Out.
Milton, IA.
515-419-1232 11-18

FOR SALE: Ford 3000 Gas,
Live Power, Power Steering,
In Good Condition. \$4,500.
660-341-8089 TFN

FOR SALE: IH Corn Picker
1 PR, Runs Smooth.
Several Flare, Barge And
Gravity Wagons. Plows 1,
2, 3, 4 Bottom AC, Case,
Ford, IH, JD, MM, Oliver.
Pomeroy, IA.
712-299-6608 12-2



YEAR END SPECIAL



2013 McCormick MTX 120
MFD Tractor
with a McCormick
L461 Loader,
1 Owner
& Very Clean

Pkg \$79,500

Vetter Equipment Company
2503 Hwy 2 • Corydon, IA • 641-872-2000
For All Your Equipment Needs • www.Vetterequip.com

CNH Capital
©2007 CNH America LLC. All rights reserved. Case IH is a
registered trademark of CNH America LLC.
CNH Capital is a trademark of CNH America LLC.
www.caseih.com

CASE IH
AGRICULTURE

WE BUY FARMS

- ✓ Any Condition.
- ✓ Quick Decision.
- ✓ Quick Closing.

Honey Creek Farms, LC.

Contact:
Steve: 515-208-1149 | steve2251@hotmail.com
Dave: 515-991-0308

Want to Buy Walnut

SERVING ALL OF IOWA

HINDMAN LOGGING

641-485-9071

Bonded & Insured

Timber Paid in Full Before Cutting





**MILLER'S
METAL SUPPLY**

Specializing in Roll Forming

- Pole Barn Packages
- Re-Roofing

Full Line of Building Materials





SHERWIN-WILLIAMS
Coil Coatings

1187 Orange Ave, Kalona
319-646-1103 vm
Bring In Your Plans for a Free Estimate

LAND AUCTION

Henry County & Jefferson County, Iowa

3 tracts
137+
acres

Rome, Iowa

CLOSES: WEDNESDAY, DECEMBER 7 AT 4PM 2022 CST

TIMED ONLINE

Auctioneer's Note: Smaller tracts of land with row crop income and timber!

From the intersection of Highway 34 & Benton Avenue, proceed south 3 1/2 miles on Benton Avenue, then west 1 mile on 260th Street, then south 1/2 mile on Henry Jefferson Avenue.

TRACT 1 - 42± ACRES (Subject to final survey)
FSA indicates: 40.07 NHLE tillable acres. CSR 2 is 60.6 on the tillable acres. Located in Sections 25 & 36, Round Prairie Township, Jefferson County, Iowa.

TRACT 2 - 38± ACRES (Subject to final survey)
FSA indicates: 35.53 HEL tillable acres of which 1.40 acres are in CRP. CSR 2 is 52.1 on the tillable acres. Located in Section 30, Tippecanoe Township, Henry County, Iowa.

TRACT 3 - 57± ACRES (Subject to final survey)
FSA indicates: 33.96 HEL tillable acres, balance being timber. CSR 2 is 43.6 on the tillable acres. Located in Section 25, Round Prairie Township, Jefferson County, Iowa.

Selling Free
and Clear!



scan for details

LAMBIRTH FARM LLC
Shane M. Wiley of Hirsch, Adams, Putnam, Cahill & Wiley, P.L.C.
- Closing Attorney for Seller
Contact Mason Holvoet of Steffes Group, 319.385.2000 or 319.470.7372



319.385.2000 | SteffesGroup.com

Facebook Twitter YouTube Instagram Steffes Group, Inc., 2245 East Bluegrass Road, Mt. Pleasant, IA

POST FRAME BUILDINGS

- Best Quality
- Great Prices
- Great Service



www.lancasterlumber.com

LANCASTER LUMBER, INC

800-424-5071 • LANCASTER, MO



**Interested In Renting
Medium to Large Tracts of
Tillable Farm Ground.**



Shramek
FARMS

573-721-3260

FOR SALE: New 3 pt. Tillers, Heavy Duty, Gear Driven, 7' to 12', Starting at \$4,050. 660-874-4455 12-23-22

FOR SALE: 2 Or 3 Pt. Blades 6, 7, 8, 9 Ft. \$150 To \$950. 7 Or 8 Ft. Snowblowers, 3 Pt. \$850 To \$1,850. 20 Loaders For Older AC, Ford, IH, Oliver And JD \$250 To \$1,250. 3 Pt. GNUSE Hyd. Buckets 6 Ft, 90 Inch, 9 Ft. \$750 To \$1,450. Several Tractors With Loaders. Pomeroy, IA. NO TEXT. 712-299-6608 12-2

FOR SALE: 24 Ft x 5 Ft Free-Standing Cattle Panels, Weighing 600 Lbs Each, Fastener Chains Included. Located in Troy, IA. 641-680-0892 TFN

NEW



2022
Special Edition
GI Tri-Glide

JUST IN!
MUST SEE!

C&C Cycle
Chariton, IA • 888-475-2243
www.cc-cycle.com

FOR SALE: Ford 8N, Good Condition, \$1,800. 660-341-8089 TFN

FOR SALE: 2018 Silverado 1500 LT 4x4 Crew Cab, Grill Guard, New Tires, Black Interior Exterior, 71K \$36,500. Unionville. 660-730-0843 11-18

FOR SALE: IH 153 6 Row Cultivator. 573-633-2369 11-18



We want to purchase & market your grain.



Buyers of Corn and Soybeans.
Organic & Non-GMO Corn and Soybeans.
Contracts Offered • Forward Pricing

Baring
Elevator

LLC

CONTACT US FOR PRICING

Baring, MO

660.892.4411

baringelevator.com



iowadredging.com

IOWA DREDGING

Doug 641-980-0828
Rusty 515-300-1290
iowadredging@gmail.com

SERVING
IA, MO, IL,
NE & KS

Iowa Dredging utilizes a compact dredge engineered specifically to facilitate removal of sediment in HOA Ponds - Sediment Basins Rural - Farm Ponds & Small Lakes.



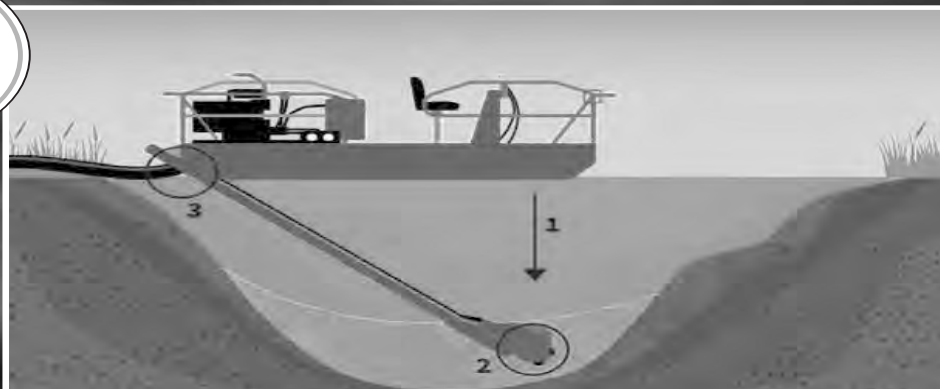
Doug 641-980-0828
Rusty 515-300-1290
iowadredging@gmail.com

**CALL US TODAY
TO GET YOUR
PROJECT SCHEDULED
FOR 2023!**

SERVING
YOUR MIDWEST
DREDGING
NEEDS!

WHAT IS DREDGING???

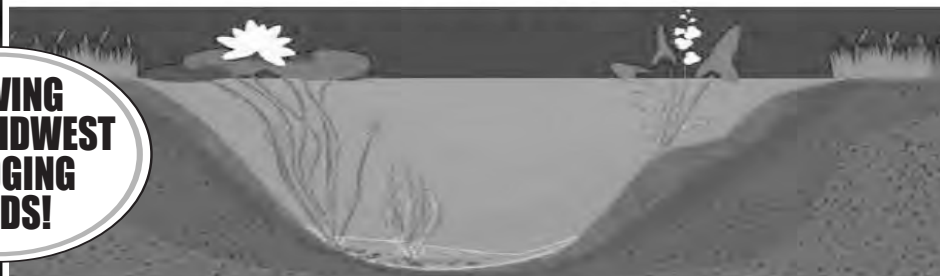
DREDGING IS A PROCESS USED TO REMOVE ACCUMULATED SEDIMENT FROM THE BOTTOM, AND IN SOME CASES, THE BANKS OR SIDES OF A RIVER, LAKE, STREAM OR OTHER BODY OF WATER. A SPECIALIZED PIECE OF EQUIPMENT CALLED A DREDGE CREATES A VACUUM THAT SUCKS UP AND PUMPS OUT THE UNWANTED SEDIMENT AND DEBRIS.



- 1** Operator lowers boom to the bottom of the body of water.
- 2** Rotating cutter-bar uses teeth to loosen settled material, as the submersible pump removes sediment from the bottom of the body of water.
- 3** the debris is transported away for final processing.

THIS PROCESS IS USED FOR

- > CREATING WATERWAYS
- > REOPENING CHANNELS
- > RESTORING SHORELINES
- > MAINTAINING ECOSYSTEMS
- > GATHERING CONST. MATERIALS
- > REMOVING TRASH & DEBRIS
- > RECONFIGURING WATERWAYS
- > INCREASING WATERWAY DEPTH
- > MINING FOR METALS
- > & MORE!



www.iowadredging.com

JUDD MOTORS

www.juddmotors.com

Hwy 63 North, Lancaster, MO
Curly Or Kevin @
660-457-3700

www.juddmotors.com

- 2014 Ford Edge, SEL, AWD, V6, Leather, Sunroof, 134K, Coco Color **\$14,900**
 2013 GMC Sierra 1500 SLT, Crew Cab, Leather, 4x4, 5.3L, 141K, Red **\$19,900**
 2011 Jeep Grand Cherokee, 4x4, V6, Leather, Sunroof, Only 112K, Dark Blue **\$13,900**
 2011 Chevy Suburban LTZ, 4x4, Sunroof, DVD, Leather, 141K, 5.3L,
 Black, Quad Seats **\$15,900**
 2007 Ford Freestyle Limited, AWD, Leather, Sunroof, 3rd Row Seats,
 220K, Black, Rides & Drives Great **\$2,995**
 2005 GMC 1500, Ext Cab, 4x4, V8, 168K, Silver **Only \$7,995**
 Bush Hog Brand 7 Ft Brush Hog, 3 Pt, Good Shape **\$2,500**
 Bush Hog Finish Mower, 7 Ft, 3 Pt, Good Shape **\$2,500**
 IH 574 Tractor, Gas, 68 HP, 3 Pt., 540 PTO, Rear Remotes, Wide Front,
 New Paint, Runs Good **Only \$4,995**
 1985 GMC 7500 Dump Truck, Single Axle, 366 Engine, 5+2 Transmission,
 Disc Brake, 11 Ft. Steel Bed, 3 Stage Single Hoist, Runs Great **Only \$8,500**

Your Cumberland Buildings Dealer!

Buy or Rent to Own. Free Delivery w/No Credit Check. Come See Our Selection!

MOBILE HOMES IN INVENTORY

We Gottem In Stock,
Call For Information

573-249-3333 Or 573-303-5529
marktwainmobilehomes.com

FOR SALE: 1971 Chevy
Chevelle 350 Auto, Black
Inside And Out, Nice Paint,
New Tires. CARGAR
Wheels, Cruise Control.
\$31,500, Info.
573-248-6111 11-18

FOR SALE: 2007 Silverado
LT, 4x4, Crew Cab, New
Body Style 5000 On Rebuilt
Engine, 175K, Silver
\$14,500. Unionville.
660-730-0843 11-18

LIVESTOCK

FOR SALE: Bumper Hitch
Stock Trailer, 6 Ft. X 18
Ft., New Tires And Rims,
New Brakes And Drums,
Bearings Repacked, All
New Wiring, LED Lights,
Good Title, \$6,400 OBO.
641-919-9117 11-18

WAPELLO COUNTY, IOWA

LAND AUCTION

FRIDAY, NOVEMBER 18TH 10:00 AM

Bridgeview Event Center

102 Church St | Ottumwa, Iowa 52501

The Estate of Peggy McAllister
Adminstrer of the Estate:
Verle W. Norris

- 40 Acres M/L just east of Ottumwa
- Timberland with lots of hardwood trees
- Excellent Recreational
and Hunting Opportunities

Mike Nelson: 641.223.2300

Jared Chambers: 641.414.0234

**PEOPLES
COMPANY**
POWERING REAL ESTATE SOLUTIONS

PeoplesCompany.com
Listing #16470

FOR SALE: 10 Outstanding
Sim/Angus Bulls 14 Months
Old Black, Polled. Paul
Martin, Shelbyna.
573-822-4216 11-18

BULLS FOR LEASE:
Over 70 Registered Angus
& Hereford To Choose
From. 90 Day Lease \$900.
Trucking Available At Extra
Charge. Kingdom City, MO.
573-999-3197 TFN

MISC

FOR SALE: Pedal
Tractors, JD With Trailer,
Farmall Pedal Tractor,
\$375 Pair OBO; Goodyear
Tires, 255X60X19, Good
Tread, \$100 OBO Pair;
Snowblower, 26 Inch, Near
New, Electric Start With
Chains, \$575 OBO. Milo, IA.
515-669-3838 11-25

SAM'S AUTO SALES

319-204-5214

www.samsautosalesia.com

Please See Our Website for Our Repairable Vehicles!



READY TO GO

2016 JEEP WRANGLER UNLIMITED SPORT

4x4, 4 Dr SUV, Auto, 5 Spd, Gasoline,
3.6L V6, 54,452 Miles **\$23,000**



READY TO GO

2017 NISSAN TITAN XD SV

4x4, 4 Dr, Crew Cab, Auto, 6 Spd,
5.0L V8, Diesel, 28,185 Miles **\$28,500**



READY TO GO

2017 GMC SIERRA 1500 SLT

4x4, 4 Dr Crew Cab, 5.8 Ft SB, Auto,
8 Spd, Gas, 6.2L V8, 75,933 Miles **\$26,500**



READY TO GO

2020 TOYOTA TACOMA TRD SPORT

4x4, 4 Dr Double Cab, 3.5L V6,
Gas, Auto, 6 Spd, 43,700 Miles **\$30,500**



CLEAN TITLE

2014 CHEVROLET SILVERADO 1500 LT Z71

4x4, 4 Dr Crew Cab, 5.8 Ft SB, 5.3L V8,
Flex Fuel, Auto, 6 Spd, 117,096 Miles **\$25,500**



CLEAN TITLE

2018 GMC SIERRA 1500 SLT

4x4, 4 Dr Crew Cab, 5.8 Ft SB, Auto, 8 Spd,
5.3L V8, 82,051 Miles, One Owner **\$35,500**



CLEAN TITLE

2013 JEEP WRANGLER UNLIMITED SAHARA

4x4, 4 Dr SUV, Auto, 5 Spd,
3.6L V6, Gas, 150,928 Miles **\$23,000**



CLEAN TITLE

2014 DODGE RAM 3500 BIG HORN

4x4, 4 Dr Crew Cab, 8 Ft LB, SRW,
6.7 Turbocharger, Diesel, 175,301 Miles **\$32,800**

Mt. Pleasant, IA • 803 East Winfield Ave • NOT RESPONSIBLE FOR TYPOGRAPHICAL ERRORS



SULLIVAN

AUCTIONEERS, LLC

A FAMILY OWNED BUSINESS SINCE 1979



Headquartered in Hamilton, Illinois, Sullivan Auctioneers, LLC is one of the largest Real Estate and Farm Machinery Auctioneers in the nation.

For more than 40 years we have been conducting professional auctions. We connect our sellers with thousands of interested buyers around the world.

Considering an Auction?

CALL OR EMAIL TODAY FOR A NO OBLIGATION CONSULTATION!

Toll Free (844) 847-2161 | Sold@SullivanAuctioneers.com
www.SullivanAuctioneers.com | Lic. #444000107

Yoder Precast

**Concrete Feed Bunks
J Bunks
Pasture Bunks
Water Tanks**

641-203-7772 641-898-2803
2870 210th St Seymour, IA 52590

LOOKING TO LIQUIDATE OR DID YOU JUST INHERIT STUFF: Let Me Help. On-Site Tag Sale Services. Personal Property And Collectible Consultation. Also Seeking Baseball Cards, Furniture, Comic Books, The Unusual, And Anything Of Value. Before Throwing Out Your Potentially Valuable Items, Contact Me. CAGA Certified. Nathan Lilley. 573-253-4159 TFN

SPRAY FOAM INSULATION: We Install Open & Closed Cell Sprayfoam. Strengthen Your Building And Block Drafts! Over 1 Million Bd. Ft. Applied. Contact Lester At: Spray Tek, LLC 16302 192nd St., Bloomfield, IA 52537 641-208-7071 TFN

CUSTOM LOG SLABBING SERVICES: No Log is Too Big! Maximum Log Capacity 90 Inches Diameter by 27 Foot Long. Jaguar Lumber 641-664-2080 TFN

FOR SALE: USED STEEL PIPE 2" to 48" Diameter, Located: Carrollton, MO. Redmount Midstream LLC. For Details Call. 660-542-3000 12-23

TIMBER MANAGEMENT: Buying Standing Timber. Bonded & Insured. PAID IN FULL PRIOR to HARVESTING. Specializing In Walnut - Oak - Maple. Cole. 641-895-8209 12-31-22

New Harleys

**4.99% For 60 Months
And \$0 Down With
Qualified Credit!
Call Us Before You Buy!
NO DOC FEES!**

C&C Cycle
Chariton, IA • 888-475-2243

www.cc-cycle.com

BUYER OF STANDING TIMBER

Lavon Gingerich Bonded and Certified

JAGUAR LUMBER

19250 Jaguar Trail • Bloomfield, IA 52537

641-664-2080



NEW MOBILE HOME STOCK

Just Received (5) New Units, They Gotta Go!

573-657-2176

amegamobilehomes.com



**2001
Wide Glide**
Windshield,
Luggage Rack,
Back Rest,
Low Miles,
19K Miles

**NO DOC
FEES!**

\$7,995

C&C Cycle
Chariton, IA • 888-475-2243
www.cc-cycle.com

Hertz LAND FOR SALE

- KEOKUK CO. - NEW LISTING! 133.55 Acres**
- Located 2 Miles NE of Fremont.
 - Mix-Use Farm With Row Crop, CRP, Timber, & Acreage Site.
 - Secluded Property with Excellent Wildlife Habitat
- KEOKUK CO. - NEW LISTING! 113.05 Acres**
- Located 4.5 Miles NE of Fremont
 - Productive Farm With Income From Row Crop, CRP & Pasture Acres.
 - Nice Recreational Property with Potential Building Site.

Washington • 319-382-3343
www.Hertz.ag

Cut-to-Length Metal for Roofing Siding & Trim

**Buy Direct
Snap Lock Standing Seam
Roofing Rolled On Site
Interior Liner Steel**



AFFORDABLE METAL
MANUFACTURING
563-264-8212

Where Quality and Affordability Meet



**303 Cleveland St
Muscatine, IA 52761**

Email: amminfo7@gmail.com

www.affordablemetalmfg.com

Golden Grain Bins Winter Discount

Grain Bins	Floors W/12" Supp. & Flashing
18'x18' 4,195 Bu. \$6,511	18' \$1,817 30' \$5,072
27'x21' 11,265 Bu. \$13,069	21' \$2,485 36' \$7,226
42'x24' 32,245 Bu. \$30,463	27' \$4,145 42' \$9,840



GMLS Industries, Inc.

PH: 660-699-2179

Or 888-983-2136

www.gmlsindustries.com

- Need Some Extra Cash? -

I Buy All Silver, Gold, Coins & Bars.
Silver Dollars, \$500 & \$1,000 Bills.
Buyer For Over 50 Years.
Pay Cash On The Spot.
Will Pick Up At Your Home Or Bank.

Try Us - You Will Be Pleased.

WALLIS COMPANY

MAX HAGEN

Cedar Rapids, IA • Same Address For 50 Years

Call For Info:

319-360-0213 Or 319-396-7760

Clip & Save This Ad

Clip & Save This Ad

Harbison Brush Mowing

Brush Mowing • CRP Fields • Timber • Trails
Pasture Cleanup • Tree Shear • Fence Rows

Jeremy Harbison

Cell: 319-461-0376

Home: 319-694-2300

HARBISON FENCING

"For All Your Fencing Needs"

Barbwire • Woven Wire

Silt Fence • Vinyl Fencing

Hi Tensile

319-694-2300 • Home

319-461-0376 • Cell

Metal Roofing

Buy Direct



641-664-3990

www.awmetal.net



1997 Dyna Wide Glide

Vance & Hines
Long Shots,
Harley Leather Bags,
Only 9K Miles,
Nice!

NO DOC FEES!

\$6,995

G&C Cycle
Chariton, IA • 888-475-2243

www.cc-cycle.com

MAST VINYL WINDOWS

HERMO-PRO WINDOWS

Custom Size Is Our Specialty

Professional Installation Available

FREE ESTIMATES

22172 Hwy. 63
Bloomfield, IA 52537

800-206-9949

CLASSIFIED COUPON

Use the Power of Your Traders for **Regional Classified Results!**

Clip this coupon to run a Classified Ad for **\$8.75** for one week.

1 Classified Ad for two weeks or 2 Classified Ads for one week for **\$17.00**.

Picture ads are not included with coupon, call for pricing.

Each ad must be 20 words or less. additional 20¢ per word over 20 words

AD NO. 1: (20 Words Or Less)

AD NO. 2: (20 Words Or Less)

Triple Your Classified Ad's Power By Running It In The Traders
The HAWKEYE TRADER, SHOW ME TRADER & MID-MO TRADER!

WHEN YOU SELECT ALL THREE TRADERS, YOUR AD WILL BE READ IN OVER 170 COUNTIES IN 5 STATES & ONLINE!

- ☐ **HAWKEYE TRADER ONLY:** 1 Ad For One Week **\$8.75** (84 Counties)
- ☐ **HAWKEYE TRADER ONLY:** 1 Ad For Two Weeks **\$17.00** Or 2 Ads For One Week **\$17.00** (84 Counties)
- ☐ **BOTH HAWKEYE & SHOW ME TRADER:** 1 Ad For One Week **\$17.00** or 2 Ads For One Week **\$32.00** (150 Counties)
- ☐ **BOTH HAWKEYE & MID MO TRADER:** 1 Ad For One Week **\$17.00** or 2 Ads For One Week **\$32.00** (106 Counties)
- ☐ **BEST VALUE: HAWKEYE, SHOW ME & MID MO TRADER:** 1 Ad For One Week **\$25.00** (170 Counties)
- ☐ **BEST VALUE: HAWKEYE, SHOW ME & MID MO TRADER:** 2 Ads For One Week **\$47.00** (170 Counties)

To Receive This Rate, Coupon Must Be Mailed In With your Payment
Or Use Our Website @ www.hawkeyetrader.com For More Savings Options

HAWKEYE TRADER, P.O. Box 96
Pulaski, IA 52584

FOR SALE: FALL REGISTERED ANGUS BULLS

We Are Selling Pick at the Farm

Bulls Are Big, Stout & Slick Black. Bulls Are the Most Gentle We Have Ever Raised. Most Are A.I. with Top EPD's, Weights & Super Feet.

Pedigree & Quality Second to None.

First Come, First Serve!!

Up to Date on Vaccinations & Semen Tested

\$4,000 for Pick



Ranch

13815 220th Ave
Monticello, MO 63457
Terry (573)470-0846
Marilynn (573)470-0847

I am Looking to Buy Your Deer Antlers, Sheds & Heads



**Big & Small,
I Buy Them All!!
Ronnie Coffelt
417-339-1462**

WE HAVE MOBILE HOMES

Instock New Arrivals (8)
Homes, Need To Go
As Soon As Possible
573-499-9993

columbiadiscounthomes.com

FOR SALE

Driveway Fabric Rolls
Commercial, Heavy Duty
Designed for Heavy Traffic
12'5" Wide • 432' Long



\$370.00/Roll
660-216-0938

Where Quality Comes First
Are You Thinking About A Building? Bring Your Size And We'll Give You A FREE Price Quote!
WE WILL ENGINEER YOUR TRUSSES TO YOUR SPECS

BUILDING PACKAGES (TAXES INCLUDED)
SERVING THE TRI-STATE AREA SINCE 1992

Call For Pricing On Building Packages!

- WE WILL DELIVER -

FREE ESTIMATES ON ALL BUILDINGS
WE MANUFACTURE STEEL ROOFING,
SIDING AND TRIM, CUT TO THE INCH.



BUY DIRECT AND SAVE!

BUILD IT YOURSELF OR HAVE ONE OF OUR PROFESSIONAL CONTRACTORS DO IT FOR YOU.

We Work Hard For Your Success. Your Business & Satisfaction Is Important To Us!

4 MILES SE OF REVERE, MO
OR 6 MILES NW OF WAYLAND ON C.
26758 HWY C., ALEXANDRIA, MO 63430

WAGLER METALS

Missouri Warehouse

MON.-FRI. 7AM-5PM
SAT. 7AM-2PM

LAN-DOW BUILDINGS

"We Build to Suit Your Needs"



"H" Don or Dick Middleton

Memphis Lumber Co.

1-800-337-5858

Phone: 660-465-8595

Fax: 660-465-8596

IOWA LAND COMPANY **FARMLAND AUCTION**
WARREN COUNTY, IA 229.65 +/- ACRES
Thursday, December 8th, 2022 at 12:00PM

FARMLAND DETAILS
- Tract 1 - 29.49 +/- Acres
Building Locations
- Tract 2 - 48.30 +/- Acres
Building Site & Hunting
- Tract 3 - 151.86 +/- Acres
Tillable, CRP, & Hunting
AUCTION LOCATION:
Indianola American Legion

VIEW DETAILS AND LAND FOR SALE AT IOWALANDCOMPANY.COM

Luke Skinner
515-468-3610

Contact Your Local Land Agents

Nick Skinner
515-650-0974

2016 CVO Street Glide
Screaming Eagle 110, Shotgun Shocks Air Ride, FBI Bars,
V&H Head Pipes w/Rinehart Mufflers, 11K Miles

NO DOC FEES! **SPECIAL! \$28,995**

C&C Cycle
Chariton, IA • 888-475-2243
www.cc-cycle.com

Hube's Garage Complete Liquidation
LIVE AUCTION
Saturday, November 19th @ 10:00 AM

1310 East Main • Knoxville, IA
Snap-On & Other Automotive Repair Equipment, 2 Yrs Old
2008 GMC K2500HD • 1989 Chevy R3500 Sq Body
1973 Honda Scrambler CL350
Plus More Usual Tools & Equipment Found in a Modern Automotive Repair Shop.

See Last Week's Publication or **vandonsler.com** for Pictures & Complete Salebill.
Hube's Garage - Aaron Hubler - Owner

See Last Week's Publication or **www.vandonsler.com**
for More Pictures.

Van Donsler Auction Company
Auctioneer: Rick VanDonsler 641-891-2222



SCOTT HUSKEY'S HOME SERVICE: Insulated Skirting Systems For Manufactured, Modular And Site Built Homes. Lowers Energy Cost And Prevents Frozen Water Lines. Since 1972.
573-696-3468 TFN

FREE HEAT & HOT WATER: Eliminate Monthly Heating Bills w/Classic Outdoor Wood Furnace. No Sunday Calls.
660-707-3866 TFN

FOR SALE: Lift Chair, Flex Steel, Near New, Medium Brown, Lady Used, \$525 OBO, Cash ONLY. Milo, IA
515-669-3838 11-25

"One Man's Junk Is Another Man's Treasure!"
Sell It in the Hawkeye!

Post & Pole Frame Buildings

Horizon BUILDINGS

Specializing in:
Post Frame Buildings
(Up to 100' Wide Clear Span)
Agricultural • Commercial
Residential • Equine
Heat Formed Metal Roofing & Siding
With 50 Year Warranty

Quality Workmanship
Best Quality Material

Everlast Roofing, Inc.
2 Miles N. of Drakesville on pavement
888-371-4710 • 641-722-3505
17549 Husky Trail Drakesville, IA 52552

Heartland 20'x82" 14K
Spring Loaded Ramps & GN Jack, Powder Coat Paint
• \$6,350

Heartland 6.5x12 Tilt Trailer
3,500 Lb Axle, 15" Tires
• \$2,250

6.5x12 Trailer w/Gate
• \$2,450

Prices Good On IN STOCK Trailers Only
Max Kongable
2735 160th St. Mt. Union, Iowa 52644
319-865-7281 • Cell: 319-931-2733

GOVERNMENT EQUIPMENT AUCTION

520+ ITEMS SELL NO RESERVE!
TUESDAY, NOVEMBER 29

LL9574 '07 CAT 140H
motor grader

LL9572 '79 CAT 627B
conventional scraper

DI6830 '14 Volvo G940B
motor grader

DM4824 '14 John Deere 6125M
MFWD tractor

DM8095 '13 Int'l WorkStar
7400 dump truck

purple wave AUCTION

INVENTORY INCLUDES: motor graders, tractors, dump trucks, digger derrick truck, wheel loaders, backhoes, SUVs, ambulances, skid steer, pumper fire truck, pickup trucks, conveyor and more. All items are sold "AS IS." 10% buyers premium applies. 866.608.9283

BID NOW! purplewave.com

November

USED DOUBLE WIDE

\$34,900 WOW!!!!

This Won't Last

573-657-2176

amegamobilehomes.com

Online Car Auction

Daugherty
AUCTION AND REAL ESTATE SERVICES, INC.

Auction
"We sell it the day you need it sold!"

1967 Chevelle SS, Skidloader Trailer, Freightliner, Chevy Bel Aire

Visit daughertyauction.hibid.com to bid online now

Bidding begins to end 12/3/22 at 7:00 pm CST

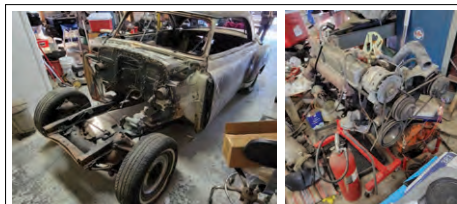
Pick up on 12/4/22 9-1pm at 215 E Grimes St. Polk City, IA



1967 Chevy Chevelle SS



**2016 17' Redi Haul
Skid Loader Trailer**



1952 Chevy Bel Air Coupe w/ rebuilt 307



1998 Freightliner



Auction

Saturday Nov. 26, 2022 @ 10:30 am White Fair Building, Red Oak, Iowa

Note: Selling collectibles @ 10:30 followed by guns and toys.

Vintage Toys - Very Good Condition

Rare ~ One of a Kind ~ Pedal Tractor "Super Tractor"



This pedal tractor has a hand clutch and transmission, believed to have been made in the 20's or early 30's!



Arcade Cast Iron Toys - Cement mixer truck; grain truck; traffic car; road grader; dragline; police officer on a motorcycle; race cars; tractors; Volkswagen car, plus many others.

Marx Toys - Several wind-up cars trucks, dragline, gas station, train w/ signal light, plus many others. Marbles; 1970-1980 model cars; cast iron and wooden army men; 2 - Scott Atwater miniature boat motors w/ boxes; large metal airplanes and railroad engine.



Collectibles

Acme anvil approximately 100 lb., good condition; platform scales; 1926 calendars, old metal gas cans; seed planter box; lanterns; various farm primitives; 1942 Furrow magazine; 1940 Farm Journal magazine, plus others. Bronze like 3 person Hunter lamp, nice; 2 Winchester prints, old box cameras; plus other collectibles of all kinds.

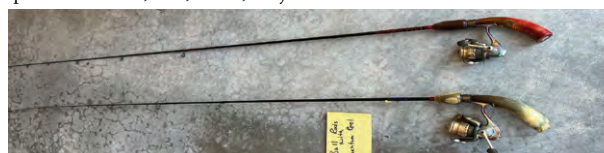
Long Guns and Hand Guns

- Ruger 1022 22, long rifle.
- Marlin HMR, 17 cal., bolt action.
- S&W MP 15-22, 22 cal.
- 1917 Eddystone 30-06 sporterized bolt action.
- Stevens double barrel w/hammers.
- Bear Creek Arsonal II BC A15, multi-cal.
- Sig Sauer 1911-22.
- LL AMA Stoeger Ind. 380 cal.
- American Classic Commander, 9 mm.
- 2 - old pump up air rifles.

Few other guns pending, check website; lots of ammo of all kinds; reloader & various equipment.

Sporting Goods

2 - Ball rods w/Quantum reels, Nice; 10 - 15 good rod and reels; fishing supplies of all kinds; nets, tackle, life jackets and more.



Miscellaneous Items

Set of nice Corning Ware dishes; wooden ducks, nice; small wooden table w/drawers; good propane tank heater, plus other misc. items.

Richard Schmidt Estate and Others

Auctioneers:

Steve Bergren 712-789-0847 Grant Vrba 712-789-2038 Pete Myers 641-202-0108

Terms: cash or good check; not responsible for accidents or theft; verbal announcements on sale day take precedence, port-a-pots and lunch wagon. <www.bergrenrealestateandauction.com>

Bergren
Real Estate & Auction, LLC

Bergren
Real Estate & Auction, LLC

Daugherty Auction and Real Estate Services, LLC.

Chad Daugherty ~ Owner/Auctioneer ~ Kelly Daugherty ~ Auctioneer
Adel, Iowa (515) 993-4159 ~ d_auction@hotmail.com

See us on the web at www.daughertyauction.com or "Like" us on Facebook

The information in this brochure are from sources deemed to be reliable but it cannot be guaranteed by Daugherty Auction and Real Estate Services, LLC.

JAMESPORT BUILDERS
660-684-6931
POST FRAME BUILDINGS

Free Estimates

Machine Sheds • Horse Barns • Garages
WE ALSO DO METAL ROOFS, SPRAY FOAM INSULATION (OPEN & CLOSED CELL) & CELLULOSE INSULATION
 We Have: House Plans, Dirt Work & Concrete Available
Hours: Mon-Fri 8 AM - 5 PM • Sat By Appointment Only
32137 State Hwy 6 • Jamesport, MO 64648
Serving Southern Iowa



GIVE THANKS
 FAMILY • FRIENDS • GRATITUDE

Looking to Sell Your Farm or Construction Equipment?

- **All Makes and models - Loader Tractors, MFWD Tractors, 2wd Tractors, 4wd Tractors**
- **Kinze Planters - Split row & 30" planters**
- **Later Model John Deere & CIH Platforms, Corn heads**
- **Grain Carts**
- **Combines, 90s models and newer**
- **Skid Steers**
- **Excavators**
- **Wheel Loaders**

One piece or a whole line of farm or construction equipment; Let us know what you have.

Shay 660-605-0839 Justin 660-605-2346

BandSequipmentsales.com
GALLATIN | MISSOURI

\$5,000

13 Yr Old Belgian Appaloosa Cross Gelding, Broke to Ride & Drive, Very Willing, Trained by Amish

641-780-4455

2016 Wide Glide
 Vance & Hines Exhaust, Sissy Bar & Pad, Only 7100 Miles! WOW!!

NO DOG FEES!

\$13,995

C&C Cycle
 Chariton, IA • 888-475-2243
www.cc-cycle.com



Timed Online Washington County, Iowa
LAND AUCTION
and Acreage

274±
Acres - 4 Tracts
 subject to final survey

Washington, Iowa

CLOSES: WEDNESDAY, DECEMBER 7 AT 10AM 2022 CST

Auctioneer's Note: Land with CRP income along with timber & pasture perfect for hunting & recreation, along with a home with a machine shed & grain bins!

Land is located 5 3/4 miles south of Washington, IA on Highway 1, then 1 1/2 miles east on 290th Street, then 1 mile south on Kiwi Avenue, then 3/4 miles west on 300th Street to 1970 300th Street, Washington, IA.

TRACT 1 - 76± ACRES

FSA indicates: 74.27 HEL tillable acres of which 72.4 acres are in CRP. CSR 2 is 56.2 on the tillable acres. Located in Section 10, Brighton Township, Washington County, Iowa.

TRACT 2 - 69± ACRES

FSA indicates: 55.7 HEL tillable acres of which 55.7 acres are in CRP. CSR 2 is 60 on the tillable acres. Located in Section 11, Brighton Township, Washington County, Iowa.

TRACT 3 - 129± ACRES

FSA indicates: 65.8 HEL tillable acres of which 35.8 acres are in CRP. CSR 2 is 45.4 on the tillable acres. This tract has a 46'x62' pole barn, 2 ponds, pasture & timber. Located in Sections 10 & 11, Brighton Township, Washington County, Iowa.

FSA information on entire farm:

FSA indicates: 195.77 acres tillable.
 CRP contract is \$236.82 x 163.90 acres = \$38,815.00

Timed Online Estate Equipment Auction

1970 300th Street, Washington, Iowa

CLOSES: WED, DECEMBER 7 AT 1PM

Preview: November 23 from 10-11AM
Loadout: December 9 from 9AM - 3PM

For equipment, contact Jerry Roth of Steffes Group,
 319.385.2000 or 319.750.3269

CARLA J. ROBERTSON & RONALD L. ROBERTSON ESTATE
 Nick AbouAssaly of Simmons Perrine Moyer Bergman P.L.C. - Closing Attorney
 Craig Davis of Lloyd, McConnell, Davis & Lujan, L.L.P. - Attorney for the Estate
 For real estate, contact Mason Holvoet of Steffes Group,
 319.385.2000 or 319.470.7372

319.385.2000 | SteffesGroup.com

Steffes Group, Inc., 2245 East Bluegrass Road, Mt. Pleasant, IA



scan for details





**Bring Your Plans In For
FREE ESTIMATE**



**Full Line Of
Building
Materials**



**COMMERCIAL - AGRICULTURAL
RESIDENTIAL**

17893 212th Street • Bloomfield, IA 52537
641-722-3605 • Mon. - Fri. 7 AM - 5 PM

SOUTHEAST IOWA STEPS



**More Sizes
Available**

**For Sales & Service
Please Call Chris
At 641-919-6922**

Check Us Out On Facebook

Steps • Stock & Custom Railings



MOVING SALE

SATURDAY, NOVEMBER 26TH, 2022, AT 11:00 A.M.

FAIRGROUNDS COMMUNITY BUILDING • WINTERSSET, IOWA

ANTIQUES: Pottery...Shawnee, Roseville, Weller, Hall, High glazed California & more; Royal Copley; Cut glass & pressed glass; Vaseline glass; Glass baskets; Biscuit jars; Frankoma; Red Riding Hood and other cookie jars; Fostoria; Cookie cutters; Rosemead; Viking glass; Black Sambo plate; Carnival glass; Westmoreland items; Spooners; Cranberry glass; Nippon; Tankards; Bowls; Wedgewood; Child's stove; Heisey items; Noddies; Green glass; Cobalt; Pull toy; Pie birds; Steins; figurines; Belek; Spode; Lots of Christmas; Hummel Village; Gene Autry game; Aunt Jemima items; Hop-A-Long Cassidy glasses; and more.

FARM EQUIPMENT TO SELL AT 2:00 P.M.: Farmall 966 tractor w/duals, cab w/good glass & good rubber, 5721 hours; New Idea Manure spreader; Bale fork; Bush hog; 8' Rhino blade; John Deere 4450 Diesel tractor w/740 classic loader, working air & heat, 8158 hrs w/PTO 540 & 1000; John Deere 7200 Planter Max Emerge 2-1230 vacuum, 200 Monitor, no till folders & trash whippers.

GUNS TO SELL AFTER FARM EQUIPMENT: Mossberg 410 24" full choke pump shotgun; Viper 410 auto. Shotgun; 2 boxes of 410 shells; Kel Tec 22 pistol w/4 clips. Kel Tec CP 33 Black pistol w/2 clips; Winchester Model 77 Semi-auto 22 rifle; Stevens Model 58 16 ga bolt-action shotgun w/clip; Western Field Model 69A B22 bolt action single shot rifle; 22 250 cal. bolt action Rem rifle; Vest holster; Stevens Model 87B tube fed 22 rifle; RG-22 LR Revolver; Mossberg 500 A 12 ga w/2 extra barrels; 310 A 12 ga; Hobar 22 cal. rifle (rough); Hermono Libor 22 ga side by side; 54 61 Black powder w/octagon barrel; Lots of 12 ga slugs.

TERMS OF SALE: ID is required to receive bid numbers. Gun permits required to purchase firearms. We accept checks and cash only, no cards. We are not responsible in case of accident or theft. Thank You!



LUNCH SERVED

HARTMAN AUCTIONEERING

Steve Hartman - Cell 515-468-7857, Home 515-462-4584
www.hartmanauctioneering.com



TRUE MODULARS

30 To 60 Day
Delivery Available,
3 And 4 Bedroom

573-657-7040
chateauhome.net

Online Auction

Daugherty
AUCTION & REAL ESTATE SERVICES, LLC

Auction
"We sell it the day you need it sold!"

Tractors, Farm/Acreage Equipment, Tires
Visit daughertyauction.hibid.com to bid online now
Viewing of Equipment 11/19/22 9-1pm
Bidding begins to end 11/26/22 at 7:00 pm CST
Pick up 11/27/22 between 9-1pm at 26083 330th Crt. Adel, IA



Daugherty Auction and Real Estate Services, LLC.

Chad Daugherty - Owner/Auctioneer
103 N 9th St. Suite A Adel, Iowa (515) 993-4159
Email- d_auction@hotmail.com
Website- www.daughertyauction.com



The information in this brochure are from sources deemed to be reliable but it cannot be guaranteed by Daugherty Auction and Real Estate Services, LLC.

MISSOURI LIVESTOCK SYMPOSIUM

William Matthew Middle School

1515 S Cottage Grove • Kirksville, MO

Friday, December 2, 2022 • 4 to 9 p.m.

Saturday, December 3, 2022 • 8 a.m. to 4 p.m.

Featuring nationally-known speakers covering timely topics



Dr. Garry Lacefield
Professor Emeritus
Forages Extension Specialist
University of Kentucky



Mike Major
Horse Trainer
Bowie, Texas



Dr. Trey Patterson
Padlock Ranch Co.,
Ranchester, Wyoming



Doug Ferguson
Mr Cattlemaster
Blue Springs, Nebraska



Jeremia Markway
Markway Ranch
Eldon, MO



Lynn Martin, DVM
MU Department of
Veterinary Medicine
Columbia, MO



Dr. Andrew Griffith
Livestock Economist
University of Tennessee



Wesley Tucker
MU Extension Ag
Business Specialist
Bolivar, MO

- It's all FREE! No cost to attend! No registration needed!
- Nationally-known speakers covering timely topics on livestock production and more!
- FREE Trade Show!

Find more information
missourilivestock.com
660-665-9866

FRIDAY NIGHT KEYNOTE SPEAKER

The Nutritional and Environmental Case for Meat and Livestock

Diana Rodgers, RD

Diana speaks internationally about the intersection of optimal human nutrition, regenerative agriculture, and food justice.
sustainabledish.com



SCHEDULE OF EVENTS FOR FRIDAY, DECEMBER 2 (all events free)

4 p.m. - Trade Show Doors Open		6 p.m. - FREE co-sponsored Beef Supper	
7:00 p.m.	Welcome - Andy Jackson, MC and Dr. Robert Webb, Superintendent, Kirksville R-III School District		
7:10 p.m.	Guest Welcomes - Mun Choi, President, University of Missouri System; Chris Chinn, Director, Missouri Department of Agriculture; and Scott Walker, State Conservationists, USDA-Natural Resource Conservation Service		
7:35 p.m.	Recognition of Important Guests		
7:40 p.m.	Recognition of Cover Photo Contest Winner		
7:55 p.m.	Missouri State Fair Queen - Elsie Kigar, Bible Grove, MO		
8:00 p.m.	Beef and Kids and Knowledge, Oh My! Madelyn Sampson, Missouri Angus Princess, Kirksville, MO		
8:05 p.m.	The Nutritional and Environmental Case for Meat and Livestock, Diana Rodgers, RD, a "real food" nutritionist and sustainability advocate from near Boston, Massachusetts.		



UNIVERSITY OF MISSOURI
Extension
Complete info at
www.missourilivestock.com

SCHEDULE OF EVENTS FOR SATURDAY, DECEMBER 3 (all events free)

Trade Show Open 8 a.m. – 5 p.m.		Coffee and Donuts provided by FCS Financial				Trade Show Open 8 a.m. – 5 p.m.		
	BEEF CATTLE	FORAGES	HORSE	SHEEP	MEAT GOATS	STOCK DOGS	HORTICULTURE	FARM MANAGEMENT
9 a.m.	Driving the Livestock Markets: Who is Steering and Who is Along for the Ride? Dr. Andrew Griffith, Ag & Resource Economics, University of Tennessee	Developing Drought Resilient Forage-Livestock Systems, Dr. Harley Naumann, Plant Science & Technology, MU	Tack Selection, Bridles, Bits and More, Mike Major, horse trainer, Bowie, TX	Sheep Pneumonia-Causes and Challenges, Maggie Highland, DVM, Wisconsin	Minerals: Do We Really Know Anything? Charlie Robinson, DVM, Bolivar, MO	Visit the Trade Show	Growing Lavender in Missouri, Jennifer Schutter, MU Extension Horticulture	Farm Estate & Succession Planning, Wesley Tucker, Agribusiness Specialist, MU Extension
10 a.m.	A Systems Approach to Managing Cow Herd Replacements, Dr. Trey Patterson, Padlock Ranch, Ranchester, WY	Forage Quality: What is it and What Can We Do to Improve It, Dr. Garry Lacefield, Professor Emeritus, University of Kentucky	Preparing a Horse for their Purpose with Proper Riding Techniques, Mike Major, horse trainer, Bowie, TX	Profitable Sheep Production – How We Do It - Jeremia Markway, Markway Ranch, Eldon, MO	Build Resilience into Your Goat Pastures, Susan Jaster, Farm Outreach Worker, Lincoln University	Choosing the Right Dog, Rachel Ritland, Radcliffe, Iowa	What's Killing My Trees? Yvette Amerman, MDC Private Land Forester	The Invasive Longhorned Tick, Rosalie Ierardi, DVM, University of Missouri Vet Med
11 a.m.	Beef Speaker Panel: Cow Herd Management and Pre-weaning Strategies, Dr. Jordan Thomas, moderator, MU Extension Beef	Hay Loss Reduction Strategies, Charlie Ellis, MU Extension Ag Engineer, Troy, MO	Colt Starting: Mindset and Preparation, Mike Major, horse trainer, Bowie, TX	Sheep Abortion – Causes and Diagnostic Workup, Maggie Highland, DVM, Wisconsin	NSIP: National Sheep Improvement Program, Charlie Robinson, DVM, Bolivar, MO	Foundations in Training of Stock Dogs, Rachel Ritland, Radcliffe, Iowa	Pollinators and Plants: A Critical Partnership, Dan Getman, Master Gardener	How Much Can I Afford to Spend This Winter to Take it to the Next Level? Better Cattle Prices in the Future? Wesley Tucker, MU
Visit the Trade Show		12 – 2 p.m. – Free Governor's Style Luncheon					Visit the Trade Show	
Hosted by Missouri's finest commodity groups and co-sponsored by your Missouri Department of Agriculture								
2 p.m.	Marketing Fundamentals to Prosper, Doug Ferguson, Mr Cattlemaster, Blue Springs, NE	Role and Importance of Forage Legumes, Dr. Garry Lacefield, Professor Emeritus, University of Kentucky	Setting Up Your Pregnant Mare (and Future Foal) for Success, Lynn Martin, DVM, MU College of Vet Med	Setting Up for Lambing Success, Charlie Robinson, DVM, Bolivar, MO	Goat Abortion – Causes and Diagnostic Workup, Maggie Highland, DVM, Wisconsin	The Finished Stock Dog and Training, Rachel Ritland, Radcliffe, Iowa	Holiday Flower Arranging, Jennifer Schutter, MU Extension Horticulture Specialist	Selling Timber: What the Landowner Needs to Know, Dr. Hank Stelzer, MU Extension State Forestry Specialist, Columbia, MO
3 p.m.	Beef Speaker Panel: Post-weaning Production and Opportunities, Dr. Eric Bailey, moderator, MU Extension Beef	Grazing Year 'Round, Jeremia Markway, Markway Ranch, Eldon, MO	Common Equine Eye Conditions, Lynn Martin, DVM, MU College of Vet Med	Sheep Medicine Overview, Charlie Robinson, DVM, Bolivar, MO	Goat Pneumonia-Causes and Challenges, Maggie Highland, DVM, Wisconsin	Visit the Trade Show	Horticulture Specialist	An Early Outlook for Winter 2022-23, Dr. Anthony Lupo, Atmospheric Science, University of MO

Call Dean or Tim to Order Your New Polaris Today!



2022 POLARIS
RANGER 1000

Slayton POLARIS

10456 State Route B, Downing, MO 63536

slaytonpolaris.com

660-328-6627

We will be Closing Wednesday, November 23rd @ Noon for the Thanksgiving Holiday. We will Reopen Monday, November 28th.

Have a Blessed Thanksgiving Holiday with Family and Friends.



14 ~~25~~ Trikes In Stock Ready To Go and Building More

We Install Trike Kits on Hondas, Yamahas, Harleys, Triumphs, Victories, Suzukis & Kawasakis! Get Your Trike Kits Ordered Today! 4 Weeks For Delivery! We Do Hannigan, California Side Car, Frankenstein, Mystery Design, Motor Trike Kits!

We Also Carry Can Am Spyders.

888-475-2243 • Chariton, IA

www.cc-cycle.com - Click on Trike Gallery!

Prices Starting @ \$9,995 For Complete Units!

Kit Prices Starting @ \$5,295

We Also Carry Vanderhalls.

2020 Vanderhall Carmel & Venices In Stock!



We Can Finance Kits!

Zero Down Financing With Interest As Low As 4.99% WAC

C & C CUSTOM CYCLE

888-475-2243


QUALITY PLUS FEEDS

HOOVES & HORNS

14% PROTEIN, ALL-STOCK PELLET*

- CHELATED TRACE MINERALS
- APPLE FLAVORING
- SAFE FOR MULTI-SPECIES FEEDING
- FLUSHED & SEQUENCED FOR HORSES, NO IONOPHORES OR RESIDUES

* DO NOT USE WITH MOST SPECIES OF SHEEP DUE TO COPPER CONTENT. DOES NOT CONTAIN NON-PROTEIN NITROGEN



2033 Locust Street, Saint Paul, IA 52657
(319) 469 - 3167 | www.qualityplusfeedinc.com



2015 Spyder RTS
Lots of Extras,
Only 17K Miles

NO DOC FEES! **\$17,995**

C&C Cycle
Chariton, IA • 888-475-2243
www.cc-cycle.com

www.hawkeyetrader.com



2009 Heritage
Stereo,
Custom Grips,
Sissy Bar & Pad,
28K Miles

NO DOC FEES! **\$10,495**

C&C Cycle
Chariton, IA • 888-475-2243
www.cc-cycle.com

MASTER BUILDERS

Post Frame Buildings



24 x 30 x 10 1-10x8 Overhead Door 1 Walkout Door Concrete Floors \$29,000	30 x 40 x 10 1-10x8 Overhead Door 1 Walkout Door Concrete Floors \$33,000
---	---

All Sizes On Sale
Price Includes All Tax and Labor
Call (641)295-4970 • (641)295-4467
Customers are responsible for all permits.



KARS, INC

OF PLEASANT HILL

www.kars-inc.com 5701 E. University • Pleasant Hill, IA 515-564-0937

 <p>2011 Chevy Tahoe 1500 LTZ, 4WD, 5.3 V8, Heated & Cooled Seats, Sunroof, 3rd Row Seating, Loaded, Leather, 109K, \$19,995</p>	 <p>2015 Ford Explorer XLT 4x4, V6, Auto, Loaded, Leather, 3rd Row Seating, 78K Miles, \$20,995</p>	 <p>2013 Chevy Traverse LTZ AWD, Loaded, Heated & Cooled Leather, Sunroof, 3rd Row Seating, 121K, \$13,995</p>	 <p>2012 Chevy Malibu LS 4 Cyl, Auto, Nicely Equipped, 111K Miles, \$11,995</p>	 <p>2015 Jeep Grand Cherokee Laredo 4x4, V6, Auto, Full Power, MP3 Player, 95K Miles, \$20,995</p>
 <p>2007 Ram 2500 ST 4x4, Quad Cab, 5.9 Cummins, Full Power, 157K, \$22,995</p>	 <p>2011 Ram 1500 Sport 4WD, 5.7 Hemi, Full Power, Loaded, Bed Cover, 133K, \$15,995</p>	<p>Low Miles</p>  <p>2015 Ford F250 6.2 V8, Auto, Big Grill Guard & Bumper, Aftermarket Wheels, Nice! 73K Low Miles, \$29,995</p>	 <p>2010 Honda CR-V LX 4WD, Lots of Equipment, CD/MP3, Keyless Entry, 102K, \$13,995</p>	 <p>2012 GMC Acadia SLT-1 AWD, Heated Leather, Loaded, Sunroof, 3rd Row Seating, Only 93K Miles, \$13,995</p>
 <p>2012 Chevy Silverado K1500 LT Ext Cab, x4, 5.3 V8, Full Power, CD/MP3, 116K, \$17,995</p>	<p>Low Miles</p>  <p>2010 Dodge Dakota SXT 4WD, Crew Cab, V6, Well Equipped, Bed Cover, CD/MP3, Only 63K Miles, \$16,995</p>	 <p>2013 Ram 2500 ST, Crew Cab, 4x4, 5.7 Hemi, Auto, Air, Power Windows & Locks, Cruise, Tilt, 8' Box, 136K, \$28,995</p>	 <p>2017 Ford Escape SE 4WD, Turbocharged, 2.0 4 Cyl, Auto, Full Power, 60K Miles, \$17,995</p>	 <p>2013 Chevy Malibu LTZ, Loaded, Heated Leather Seats, CD/MP3, Satellite Radio, Media Storage, 107K, \$13,995</p>



2000 Low Rider
Sissy Bar & Pad,
Low Miles,
Like New!
5300 Miles

NO DOG FEES!

\$6,995

C&C Cycle
Chariton, IA • 888-475-2243
www.cc-cycle.com

SEAMLESS GUTTER ROLLING
Vernon Mast
5308 Hwy 1 SW • Kalona, IA 52247
319-471-0253

November



Edina Livestock Sales
Edina, Missouri
Weekly Sales Start @ 12:30 PM

Friday, November 18th - Special Feeder Calf Sale
Bred Cow & Cow/Calf Sale
Several Yearlings Consigned

Friday, November 25th - No Sale

Saturday, November 26th - Kevin & Beth Strange
24th Annual Bred Heifer Sale - 1:00 PM
Also Selling 3 & 4 Yr Old Cows

ALL SALES TELEVIEWED ON DV AUCTION
To Consign For Any or All Sales
or For All Information Call:
Owner - Kevin Strange • Cell: 660-341-9974
Ryan Strange • Cell: 660-341-9721
Sale Barn: 660-397-9999

Field Reps:
Bill Tom Hall 660-342-5420 • Jason Bischel 660-216-0373
Mike Bronestine 660-341-9965 • John Powell 660-341-1717

PETS

FOR SALE: 3 - Golden Doodles, Males; 6 - Aussie Doodles, UTD On Shots, Wormed, 14-16 Weeks Old, \$250 OBO.
641-932-7310 12-9

FOR SALE: Registered Mini Aussie Puppies, UTD On Shots, Just In Time For Christmas! Very Cute And Friendly, Price To Sell.
641-664-2001 11-18

FOR SALE: AKC Chocolate Lab Pups! Born 8/29/22, Great All-Around OFA Tested Parents, Hunting And House Dogs, Real Deal! \$750. Call Or Text.
641-572-0372 11-18

PUPPIES, PUPPIES: We Want to Buy Your Puppies! Registered or Mixed Breeds. We Have Homes Waiting for Them!
573-784-9866 TFN

RECREATIONAL

FOR SALE: 2006 H-D 883 "Sportster" 5800 Miles, New Tube, Tires, Battery, Filters, Carb Kit, Burgundy, \$5,000, Reasonable Offer.
816-465-0102 11-18

FOR SALE: 19 Ft. Open Bow Boat And Trailer. 4.3L Mercruiser I/O . See To Appreciate. Price Negotiable. Marceline. Call After 5.
660-376-3114 11-18

AG RELATED

FOR SALE: Very Nice WL 42 Loader With QT Bucket Off 706 IH, \$5,500. Pomeroy, IA.
712-299-6608 12-2

FOR SALE: IH 153 6 Row Cultivator.
573-633-2369 11-18

WANTED: New Leader 3020 Lime Box, 16 Or 17 Ft. With Belt Over Chain Conveyor To Mount On Tandem Truck.
641-990-1249 11-18

FOR SALE: 2020 Simplicity Compact Utility Tractor With Quick Attach Front Loader And Bucket, 33 HP Vanguard Engine, Hydro, 4x4, 206 Hrs., 3 Pt., 61 Inch Drive Over Deck, Excellent Condition, \$10,800.
641-572-0061 11-18

LAND AUCTION
217.48 ACRES M/L IN LUCAS COUNTY

TUESDAY, NOVEMBER 22ND, 2022 | 10:00 AM
Carpenter's Hall | 1215 Court Ave | Chariton, Iowa 50049

Representing The Estate of George Wayne Pierschbacher in the sale of 217.48 acres located north and east of Chariton, Iowa. The Pierschbacher family farm dates back to 1961 making this an exceptional and rare opportunity to purchase Lucas County farmland that hasn't been available to the public in over 61 years. This farmland offering presents an opportunity to buy tillable acres currently in hayground, pastureland, excellent recreational and hunting options, multiple building sites with beautiful views, and an acreage being sold in "as is, where is" condition.

Open House - Tuesday, November 15, 2022 from 3:00 - 5:00 PM

TRACT 1: 50.26 ACRES M/L
TRACT 2: 103.45 ACRES M/L
TRACT 3: 33.31 ACRES M/L
TRACT 4: 27.5 ACRES M/L
TRACT 5: 2.96 ACRES M/L

PEOPLES COMPANY
INNOVATIVE REAL ESTATE SOLUTIONS
PeoplesCompany.com | Listing #16481

Adam Curran | 641.203.2931 | Adam@PeoplesCompany.com
Sara Curran | 641.344.0847 | Sara@PeoplesCompany.com

GIVE THANKS

SAM'S RIVERSIDE REPAIRABLES

805 SE 30th St • Des Moines, IA • Phone 515-265-1212 • Toll Free 800-308-4096 • www.samsriverside.com
REPAIRABLES 515-265-1212 PARTS 515-265-8792 HEAVY TRUCKS 515-265-1656

 <p>SKU: N11911</p> <p>2022 GMC Sierra K1500 Limited SLT Crew Cab, 4x4, Theft, 6.2L, 8 Cyl, 14,142 Miles \$48,900</p>	 <p>SKU: N40680</p> <p>2022 Dodge Ram 1500 Laramie 4x4, Crew Cab, 5.7L, 8 Cyl, 2,638 Miles \$34,900</p>	 <p>SKU: N61707</p> <p>2022 Ford F250 SD Lariat Crew Cab, 4x4, Theft, 7.3L, 8 Cyl, 19,065 Miles \$51,900</p>	 <p>SKU: M05146</p> <p>2021 Ford Explorer XLT 4x4, 2.3L, 4 Cyl, 20,015 Miles \$34,900</p>	 <p>SKU: M95785</p> <p>2021 Chevrolet Silverado 2500HD LT Z71 Crew Cab, Diesel, 4x4, Theft, 6.6L, 8 Cyl, 12,935 Miles, \$57,900</p>
 <p>SKU: L09523</p> <p>2020 Ford F150 Lariat Super Crew, 4x4, Regular Title, 3.5L, 6 Cyl, 23,663 Miles, \$44,900</p>	 <p>SKU: L40828</p> <p>2020 Chevrolet Silverado 2500HD LT Crew Cab, 4x4, 6.6L, 8 Cyl, 43,382 Miles \$39,900</p>	 <p>SKU: L21143</p> <p>2020 Ford F250 XLT Crew Cab, Diesel, 4x4, 6.7L, 8 Cyl, 57,385 Miles \$49,900</p>	 <p>SKU: K34725</p> <p>2019 Chevrolet Silverado 1500 LT Trail Boss Z71, 4x4, Crew Cab, 5.3L, 8 Cyl, 70,969 Miles \$30,900</p>	 <p>SKU: K46628</p> <p>2019 Ford F150 XLT Super Crew Cab, 4x4, Theft, 3.3L, 6 Cyl, 53,003 Miles, \$28,900</p>
 <p>SKU: K78560</p> <p>2019 Chevrolet Silverado 1500 Custom Trail Boss 4x4, Crew Cab, 5.3L, 8 Cyl, 12,770 Miles \$34,900</p>	 <p>SKU: H35449</p> <p>2017 Dodge Ram 1500 Laramie 4x4, Crew Cab, 5.7L, 8 Cyl, 57,686 Miles \$25,900</p>	 <p>SKU: G59479</p> <p>2018 Ford F150 King Ranch 4x4, Crew Cab, Theft, Regular Title, 3.5L, 6 Cyl, 66,443 Miles, \$38,900</p>	 <p>SKU: G55394</p> <p>2016 Dodge Ram 2500 Laramie Crew Cab, 4x4, Diesel, 6.7L, 6 Cyl, 44,358 Miles \$39,900</p>	 <p>SKU: F13731</p> <p>2015 GMC Sierra 1500 SLE All Terrain, Double Cab, 4x4, 5.3L, 8 Cyl, 54,686 Miles, \$27,900</p>

Our Hours Are 8:00 AM - 5:00 PM M-F • Sat 8:00 AM - 4:00 PM

TCS AUCTION SUNDAY, NOV. 27 • 11:05 AM

590 NE 60TH • DES MOINES, IA
THE ROGER HARTUNG ESTATE WILL OFFER A GREAT LINE OF PRIMITIVES,
BARN LANTERNS, KEROSENE LAMPS, BARN PULLEYS, COLLECTIBLES,
OLDER MAGAZINES, BOOKS, LAWN AND GARDEN HAND TOOLS,
AND IRON WHEELS.

This is a live auction. No internet bidding. Go to HiBid.com for pictures and listing.
PAYMENTS: Cash, check with proper id, credit card w/a 3% convenience fee.

For information: Tim 520.390.8812 or Cleo 515.314.6119



**New Can Am
Defenders
& Poaris
Rangers
In Stock
Now!**
Limited Quantities!
Get Yours Now!

C&C Cycle
Chariton, IA • 888-475-2243
www.cc-cycle.com

FOR SALE: JD 6620
Combine, Turbo And
Hydrostat, Good Condition
But Noise In Motor, Make
Offer; JD 6600 Late Model,
Runs Out Good; 16 Ft.
Bean Head On Cart, Poly
And Stainless Steel; 1968
Dodge 600 With Bed And
Hoist, Fenders Open Out.
Milton, IA.
515-419-1232 11-18

FOR SALE: Ford 3000 Gas,
Live Power, Power Steering,
In Good Condition. \$4,500.
660-341-8089 TFN

FOR SALE: IH Corn Picker
1 PR, Runs Smooth.
Several Flare, Barge And
Gravity Wagons. Plows 1,
2, 3, 4 Bottom AC, Case,
Ford, IH, JD, MM, Oliver.
Pomeroy, IA.
712-299-6608 12-2

FOR SALE: New 3 pt.
Tillers, Heavy Duty, Gear
Driven, 7' to 12', Starting at
\$4,050.
660-874-4455 12-23-22

FOR SALE: 24 Ft x 5
Ft Free-Standing Cattle
Panels, Weighing 600 Lbs
Each, Fastener Chains
Included. Located in Troy,
IA.
641-680-0892 TFN

FOR SALE: Ford 8N, Good
Condition, \$1,800.
660-341-8089 TFN

FOR SALE: 2 Or 3 Pt.
Blades 6, 7, 8, 9 Ft.
\$150 To \$950. 7 Or 8 Ft.
Snowblowers, 3 Pt. \$850
To \$1,850. 20 Loaders For
Older AC, Ford, IH, Oliver
And JD \$250 To \$1,250. 3
Pt. GNUSE Hyd. Buckets 6
Ft. 90 Inch, 9 Ft. \$750 To
\$1,450. Several Tractors
With Loaders. Pomeroy, IA.
NO TEXT.
712-299-6608 12-2

AUTOMOTIVE

FOR SALE: 2018 Silverado
1500 LT 4x4 Crew Cab,
Grill Guard, New Tires,
Black Interior Exterior, 71K
\$36,500. Unionville.
660-730-0843 11-18

FOR SALE: 1971 Chevy
Chevelle 350 Auto, Black
Inside And Out, Nice Paint,
New Tires. CARGAR
Wheels, Cruise Control.
\$31,500, Info.
573-248-6111 11-18

2 Speed Way Motorcycle Shelters



**1 Large (Tourer)
1 Standard Size
Retractable
"Roll Top" Shelters
Choice \$275 Or
\$400 For Both**

641-980-0828

Save Some Trees! Read The Paper Online!
www.hawkeyetrader.com

Land Auction Tuesday, December 6, 2022 @ 10 am

Gold Fair Building • Red Oak, Iowa

*Note: Land is located NW of Red Oak, Lincoln Township, Montgomery County, Iowa. This
land is all well terraced & tiled. It has good farming practices used for many years.*

Parcel #1 - Brief Legal

S1/2 NE1/4 & NW1/4 SE1/4, Sec. 7, Lincoln Township.

- Taxable Acres - 119
- Taxes - \$4,634
- Farmland Acres - 117.87
- Cropland Acres - 117.87
- CSR II - 81.7
- FSA Info - *See Below

Complete Surety Map & FSA Information
for all parcels may be viewed on our website
bergrenrealestateandauktion.com

Parcel #2 - Brief Legal

E1/2 NW1/4, Sec 15, Lincoln Township.

- Taxable Acres - 79
- Taxes - \$2,444
- Farmland Acres - 80.75
- Cropland Acres - 75.18
- CSR II - 66.1
- FSA Info
- Corn Base - 34 Acres
- Corn Yield - 147
- Bean Base - 34 Acres
- Bean Yield - 42

- Possession - Full for 2023 Crop Year
- Pature Possession - Lease was not terminated
w/current tenant on pasture acres for 2023.
- Terms - 10% down day of auction w/balance
due in full at closing time when deed &
abstract will be given.
- Note - Parcels #1 & #4 will close the end of
Dec 2022. Parcels #2 & #2 will closes in Jan
2023.
- Taxes will be prorated to closing.
- Closing - Brian Mensen & billings & Mensen
Law, Red Oak, IA is closing agent.
- Agency - Bergren Real Estate & Auction,
L.L.C. are seller's agents only.
- Bergren Real Estate & Auction L.L.C. is
licensed in the State of Iowa.

Parcel #3 - Brief Legal

E1/2 SW1/4, Sec. 17, Lincoln Township.

Except for Parcel A in SE1/4 SW1/4.

- Taxable Acres - 76.56
- Taxes - \$2,762
- Farmland Acres - 79.34
- Cropland Acres - 76.43
- CSR II - 76.5
- FSA Info - *See Below

Parcel #4 - Brief Legal

W1/2 SE1/4, Sec. 18, Lincoln Township.

- Taxable Acres - 79
- Taxes - \$2,518
- Farmland Acres - 77.47
- Cropland Acres - 49.92
- Pasture Acres - 27.55

Note - CSR II on pasture is 79.

- CSR II - 70.8 on total acres.
- FSA Info - *See Below

Davidson Farms, L.L.C.

Auctioneer - Steve Bergren 712-789-0847

www.bergrenrealestateandauktion.com

Bergren
Real Estate & Auction, LLC

TWO DAY SAPP MACHINERY AUCTION

2409 Highway 9 • Buffalo Center IA

Thursday, December 1st

Online Only Auction for Small Line items

Lots begin closing at 5:00 pm

Items to include: New doors, new windows, new cabinets, new tools, assorted trailer wheels, unused axles, new skid-loader attachments, shop items, woodworking equipment, light trailers, lawn mowers, golf carts, building materials, several nice small trailers, IH 782 Diesel Mower, Curtis Skidloader Blade, Phiber Bale Grabbers, and miscellaneous.

Friday, December 2 at 10:00 a.m.

Live auction with online simulcast bidding

Early Listings

Tractors, Skidloaders, Boom Lift, Excavator & Accessories: JD 4430 w/Allied 595 Loader (9600 hrs, QR, Out of Estate), JD 60, JD D (Parts Tractor), Int'l 84 Hydro (Quicktach Loader), Int'l 706 (Gas, Fast Hitch), Farmall 400 (WF, PS, Loader), Farmall M, '57 Minneapolis Moline 335, 2 Allis Chalmers WD 45, Allis Chalmers C w/Belly Mower, Allis Chalmers Cub, '02 Bobcat T-200 Skidloader (3261 hrs, Cab), Owatonna 1200 Mustang, Genie Lift Model Z4525 Boom Lift, '98 Bobcat 331 Excavator (4588 hrs), Accessories Unlimited Au-01-5000 Snowblower (108"), IH 460 Power Unit (540 PTO), Swisher 66" Pull Behind Mower, Wenco Generator.

Fertilizer Floater, Tillage & Planting Equipment: Case IH 452 Floater w/IH 810 Fleax Air (3982 hrs, Trimble CFX-750), Great Plains 3000 TC Turbo Chopper (30'), JD 235 Disk, Glencoe Chisel Plow (3 pt), IH 710 Plow (5 btm), Noble Cult (12-30), Blue Jet Sub-Tiller II (5 Shank Inline), JD 980 Field Cult (25'), JD 1000 Field Cult (28'), Willrich Field Cult (30'), 2-1000 Gal Anhydrous Tanks.

Combines & Heads: '00 JD 9650 STS (3300/2250 hrs, nice), JD 893 Corn Head, JD 930 F Bean Head, Gleaner R62 Combine (3000 Sep Hrs), '10 Drago Chopping Corn Head (6R), Gleaner 8000 Bean Platform (30', Air Reel), JD 7720 Titan II (650 hrs on new engine), Case IH 1660 Combine (3340 hrs, Cummins, Chopper), JD 443 Corn Head, JD 853 Row Crop Bean Head, 35' Head Trailer, Hart 30' Head Mover, Other Head Trailers.

Wagons, Grain Handling & Livestock Equipment: 2 Year Round 500 bu Wagons, 2 Behlen 320 bu Wagons, J&M 325 Wagon, Heider Barge Box (JD gear), Heider Double Barge, Flare Box Wagons, Feterl 10x76 Auger w/Swing Hopper, Hutchinson 10x72 Auger, Peck 8x71 Auger, New Holland 328 Manure Spreader, New Idea Manure Spreader, Dyna Flail 144 Shredder (12'), Balzer 1400 Stalk Chopper, Hyd Hog Cart, Round Bale Trailer, New Hayracks.

Semi, Pickups, Trailers, Vehicles & Other: '16 Ford F550 Mini OTR Service Truck (88,475 miles, Tommy Lift Crane), '94 Mitsubishi FK 457 TB (Refrigerated Box Truck), '04 Chevrolet 1500 Ext Cab (126,037 miles, 4x4), Lamar 1000 Gal Fuel Trailer (Hose Reel & DEF), '17 H&H Enclosed Trailer (24'), '98 Dump Trailer, '93 Keiferbuilt GN Livestock Trailer, Car Trailer, Triple Axle Pintle Hitch Trailer, New 10x12 Storage Shed.

To consign call Hallberg Auction 800-373-2255

Loader available & drop-offs accepted Monday-Saturday 9:00-5:00, until November 25th.

HALLBERG
AUCTION
and Real Estate

800-373-2255
www.hallbergauktion.com

Annual After Harvest Farm Machinery Consignment Auction

**Tama Co. Fairgrounds, 1217 175th St. Gladbrook, IA
Saturday, December 3rd, 2022 • 9:30 AM**

In order to have your Machinery considered for online bidding,
please contact us by Wednesday, November 16th.

Call Spanky at 319-269-4024 • Mandy at 641-485-2712

Visit spankyandsonsauction.com to look at pictures and get all the details

**spanky & Sons
Auction**

David "Spanky" Boldt
319-269-4024

spankyandsonsauction.com
Like us on Facebook

FOR SALE: 2007 Silverado
LT, 4x4, Crew Cab, New
Body Style 5000 On Rebuilt
Engine, 175K, Silver
\$14,500. Unionville.
660-730-0843 11-18

FOR SALE: Bumper Hitch
Stock Trailer, 6 Ft. X 18
Ft., New Tires And Rims,
New Brakes And Drums,
Bearings Repacked, All
New Wiring, LED Lights,
Good Title, \$6,400 OBO.
641-919-9117 11-18

MISC

FOR SALE: Lift Chair, Flex
Steel, Near New, Medium
Brown, Lady Used, \$525
OBO, Cash ONLY. Milo, IA
515-669-3838 11-25

LIVESTOCK

FOR SALE: 10 Outstanding
Sim/Angus Bulls 14 Months
Old Black, Polled. Paul
Martin, Shelbyna.
573-822-4216 11-18

BULLS FOR LEASE:
Over 70 Registered Angus
& Hereford To Choose
From. 90 Day Lease \$900.
Trucking Available At Extra
Charge. Kingdom City, MO.
573-999-3197 TFN

FOR SALE: Hundreds of
Live Edge Slabs in Stock.
Specializing in 40 Inches
Plus Diameter Slabs/Logs.
Jaguar Lumber
641-664-2080 TFN

*Quality hand-crafted solid
wood furniture to last
a lifetime.*

★ Bedroom Sets

★ Dining Room Sets

★ Curios and
Fireplaces

★ Rustic Log Furniture

★ Living Room Furniture

Children's
Furniture

Hope
Chests

Wooden
Toys

**Yoder's
Indian Creek Furniture LLC**

22769 Route V64 • Milton, IA • 319-538-7332 v.m.

4 miles north of Cantril or 3/4 miles south of Lebanon on Rt. V64

Mon. to Sat. 8 AM to 5 PM • No Sunday Sales

*Stop in for your
Christmas shopping needs!*



**2021 Can Am
Outlander
XT 1000**
Only 300 Miles,
Winch, Blade,
Bumpers,
Like New!

**NO DOC
FEES!** **\$11,995**

C&C Cycle
Chariton, IA • 888-475-2243
www.cc-cycle.com

Need Rebar?

Wholesale

A W Metal LLC
Metal Roofing Headquarters

641-664-3990
www.awmetal.net



**2009
Ultra
Classic**
One Owner,
17K Miles

**NO DOC
FEES!** **\$10,995**

C&C Cycle
Chariton, IA • 888-475-2243
www.cc-cycle.com

TIMED ONLINE | NO-RESERVE

**BUSINESS ESTATE
AUCTION**

**BIDDING CLOSES: MONDAY, NOVEMBER 28, 2022
STARTING AT 10:00 AM^{CT}**

PHYSICAL ADDRESS: 210 N 19TH ST, HAMILTON, IL 62341



INSPECTION DATE: MONDAY, NOVEMBER 21 • 9:00 AM - 3:00 PM

GENERAL INFORMATION: Mark your calendars now and make plans to participate in this huge business liquidation estate auction. Ruhs Plumbing & Heating has been in business for over 50 years and was known throughout the tri-state area. Their reputation and customer service was second to none with dedicated employees like Dennis McKay, who was with Ruhs for 50 years (Dennis started in 1972, after returning from the service and has been with them everyday since!) and Floyd Rahn, who worked there for over 30 years! This business will be missed! Selling the complete inventory to include: trucks; trailers; commercial air compressor; JD riding lawn mowers; metal break; sewer support equipment; power tools; pipe & fittings; hardware; key machine; organizers; antiques & collectables, to include showcases; furnaces; walls & walls of new inventory; and the list goes on and on! This will be phase one of a 2 day liquidation auction... watch for day 2 which will consist of the commercial real estate.

BEVERLY RUHS ESTATE & GREG RUHS

Representing Attorney: Hubert Staff | Staff & Staff
237 N 6th Street | Suite 200 | Quincy, IL 62301
(217) 228-8470

Auction Managers:

Dan Sullivan (319) 795-1808 & Jim Sullivan (844) 847-2161

**SULLIVAN
AUCTIONEERS, LLC**

(844) 847-2161
www.SullivanAuctioneers.com
License #444000107

**OVER 30 40
USED HARLEYS
Starting at
\$6,995**

C&C Cycle
Chariton, IA • 888-475-2243
www.cc-cycle.com

FOR SALE: Pedal
Tractors, JD With Trailer,
Farmall Pedal Tractor,
\$375 Pair OBO; Goodyear
Tires, 255X60X19, Good
Tread, \$100 OBO Pair;
Snowblower, 26 Inch, Near
New, Electric Start With
Chains, \$575 OBO. Milo, IA.
515-669-3838 11-25

**SPRAY FOAM
INSULATION:** We Install
Open & Closed Cell
Sprayfoam. Strengthen
Your Building And Block
Drafts! Over 1 Million Bd. Ft.
Applied. Contact Lester At:
Spray Tek, LLC
16302 192nd St.,
Bloomfield, IA 52537
641-208-7071 TFN



FARM PRIMITIVE ESTATE AUCTION Sat, November 26th - 2022 @ 9:00 a.m.

Five Star Auction Bldg • 2530 Hwy 22, Riverside, IA

Farm Primitives: Dump Rake; Cultivators; Walking Plows; Steel Wheels; Industrial Heavy Duty Cart; Lots of Galv Washtubs; Hog Oilers; Cast Iron Seats; Metal Seats; Hay Forks; Lots of Gasoline Cans; Egg Baskets; Wooden Pulleys; Kerosene Lanterns; Galv Hog Pans; Coal Buckets; Chicken Feeders; Chicken Waters; Galv Buckets of all Sizes; License Plates; Milk Strainers; Galv Funnels; Wooden Boxes; Forks; Shovels; Sprinkling Cans; Surge Milker Buckets; Screw Jacks; 150 lb Anvil; Grinding Stones; Wine Barrels Cast Iron Kettles; Cream Separator; 50 lbs Scale Wts Ceramic Washtubs; Maytag Wringer Wash Machines, Several Very Old Wash Machines; Runner Sleds; Pressure Tanks; Lots of Cream Cans; McCormick Deering Feed Grinder; Sausage Stuffer; Galv Canner Cookers; Lots of Hand Saws; Planes; Toboggans; Bolt Bin; Feed Bin; HandWater Pumps; Wooden Ladders; Kids Wagon; Cross Cut Saws; Hay Saw; Lots of Hand Cultivators; Horse Hitch Accessories; Nail Kegs; Storage Cabinets; Toolboxes; Misc Hand Tools; Misc Garden Tools; Hay Hooks; Calf Buckets; Hog Feeders; Asst Forks; Large Metal Safe; Small Metal Safe; Welding Cabinet; Older Weed Mower; 1 Older Chevy 1928 4-cyl Engine; Pride of Farm Water Parts; Buck Saws; Meat Saws; Cast Iron Stove; A Few Blacksmith Tools; Reel Mowers; Weed Whackers; Mersades Late '50's Dsl 4-Cyl Engine; Lots of More Primitives Too Numerous To Mention; **Household, Antiques, Collectibles:** Dressers; Bed Frames; Lots of Wooden Chairs; Several Buffet; School Desks; Old Windows; Old Doors; Porch Posts; House Interior Trim; Lawn Decor; Yard Gates; Washtubs; Canning Jars; Blue Vintage Jars; Lots of Granite Bowls, Buckets & Pans; Lots of Galv Buckets & Tubs; Glass 1 Gal; Lots of Cocks of All Sizes; Cast Iron Cookers; Ceramic Bowls; Ceramic Table Tops; Wooden Tables; China Hutch Vintage; Several Old Trunks; Pop Machine; Kerosene Lights; Flower Hangers; Lots of Flower Planters; Lots of Crock Jugs; Meat Grinders; Kitchen Utensils; Bushel Baskets; Apple Crates; Wooden Boxes; Vintage Toys; Milk Jars; Tea Kettles; S Buckets; Suitcases; Glass Pop Bottles; Egg Baskets; Bookcase; Desks; Chest of Drawers; Wooden Bench; Cast Iron Cooking Pots & Pans; Lots & Lots More Items Too Numerous to Mention. **Auctioneers Notes:** Plan to attend this 1 of kind primitive/antique/collectors auction combing several estates. Running only 1 ring all Day.

Open House: All Day Friday, November 25th, 10:00 AM - 8:00 PM

All items need to be removed in 1 week.

Jacob Schrock Estate

A.J. Boughten Estate & Others, Owners

Terms: Cash or Check w/ID. Not responsible for accidents or theft. All announcements day of auction supercede previous ads.

**FIVE STAR
AUCTION**
BEST BANG FOR YOUR BUCK

Auctioneers:
Delmar Yoder 319-430-2711
Lonnie Miller 319-461-0019

5starauction.com

PUBLIC AUCTION

SAT., NOVEMBER 26TH, 2022 @ 10:30 AM
Located at 303 D Main Street • Melcher Dallas, IA

2010 F-350 dually w/flatbed, 2WD, 6.7 motor, 128,000 miles; 2003 F-350 Super Duty, dually, 7.3 motor, 2WD, new top on motor, needs rear end work, 207,000 miles; 2000 F-450 Super Duty, dually, 7.3 motor, 4 dr w/flatbed, 2WD, good rubber, pintle hitch, 228,000 miles; 1994 F-350 dually w/flatbed, set up w/spray tank for cement form oil, toolboxes, 156,000 miles, needs clutch; Case 580E Backhoe w/12" & 24" tooth buckets, 2WD, 4650 hrs; 1978 IH Paystar 5000, tandem axle truck w/copma hyd boom to set cement forms, outriggers 40' reach, manual control boom selling w/140' of Conceco 8 ft cement wall forms; McLander 20' tandem axle trailer selling w/140' of Conceco 4' cement forms; Case 430 skidloader w/6' bucket, 1087 hrs; Sullair 160 air compressor w/jack hammer & pintle hitch, needs work; 2-12' tandem axle trailers w/ramps & pintle hitch; 1-12' tandem axle trailer w/mounted ramps; 130-2' Conceco wall pans; 154-4' Conceco wall pans; 20-6' Conceco wall pans; Several corner and specialty forms & wall ties; Buckets of pins & wedges for forms; 25-12"x10' steel forms; 38-4"x10' steel forms; 170' of form-a-drain w/corners & couplers; Titan Industrial 5.5HP air compressor; Titan 4" water pump; Ramset complete w/bullets; Tap & Die set; Senco air nailer; Air stapler; 6" bench grinder; 1/2" & 3/8" drills; Drywall drills; Skil saws; 3/4" socket set; 1/2" impact wrench; LP torch set on cart; Snapper 4HP rear tine tiller; Goldblack rolling table masonry saw; C-clamps...and other items.

CRAIG CLARK CONSTRUCTION

FOR MORE INFO (641) 891-1331

AUCTIONEER: LARRY CUMMINGS (641-891-3606)

Terms: Cash or good check. Photo ID Required for bidding number, not responsible for accidents, theft or inadvertent error in advertising. Everything sold as is where is.
Find us on Facebook at Cummings Auctions for pictures



2015 FLRT
Free Wheeler
 Vance & Hines Ext,
 Luggage Rack,
 48K

NO DOC FEES!
\$19,995
C&C Cycle
Chariton, IA • 888-475-2243
www.cc-cycle.com

Hertz Real Estate Services LAND AUCTION
147.72 Acres, m/l - In 3 Parcels
Keokuk County, Iowa
Located Just East of What Cheer
 Parcel 1: 38.17 Ac., m/l - Mixture of CRP and Cropland
 Parcel 2: 72.49 Ac., m/l - 57.63 Top Ac. with 79.50 CSR2
 Parcel 3: 37.06 Ac., m/l - Recreational Farm with a Pond
SALE PENDING
Thursday, November 3, 2022 @ 10:00 a.m.
 Keokuk Co. Fairgrounds • 13061 170th St. • What Cheer
 Washington • 319-382-3343
 www.Hertz.ag

906 CALVES 414 COWS LAST WEEK | EXPECTING 1300 THIS WEEK

OSBORN LIVESTOCK AUCTION
 Located 7 miles West of Cameron on
HWY. 36, OSBORN, MO
Barn Phone: (816) 675-2424
Danny (816) 649-8485
 Transportation and Order Buying Available • Bonded • Insured
SALE EVERY WEDNESDAY | 11:00 a.m.

STEERS		HEIFERS	
300#.....	\$2.09	\$2.00
400#.....	\$2.00	\$1.86
500#.....	\$1.93	\$1.74
600#.....	\$1.86	\$1.70
700#.....	\$1.74	\$1.67
800#.....	\$1.68	\$1.60
900#.....	\$1.58	\$1.52
1000#.....	\$1.50	\$1.40
1100# Fats	\$1.39	\$1.36
Top Cow: \$0.90 - Richmond		Holsteins & Longhorns: \$0.48-\$0.86	
Top Bull: \$1.09 - Orrick		Longhorn X & Dairy X: \$0.87-\$1.18	

2 SMALL COW DISPERSALS
7 BUTCHER COW BUYERS WEEKLY

Buying Butcher Cows & Horses Daily
We Have 9 Butcher Cow Plants Represented
RECEIVING HOURS: Daily until sale time
 Owner, Jayme Walker 816-665-4277 Dale Coble, Fieldman 816-213-3581
 Randy Vanderkooi, Fieldman Todd Gottswiller, Fieldman
 816-632-0694 816-390-7917
 Ivan Kanak, Fieldman 816-724-1043 Gary Mann, Fieldman 816-294-5849
 Frank Peterson, Fieldman Bill Bray, Fieldman 816-724-0438
 660-247-2306 Gary Jackson, Fieldman 816-724-4348

TAMA LIVESTOCK AUCTION

641-484-3465
Fed Cattle, Slaughter Cows & Bulls
Every Wednesday at 9:00 am

SPECIAL CATTLE SALE
Monday, November 21, 2022 - 11:00 AM
Monday, December 5, 2022 - 11:00 AM
SPECIAL PRE-CONDITIONED CATTLE SALE
Friday, December 2, 2022 - 11:00 AM
Friday, December 9, 2022 - 11:00 AM
For Markets & Listings go to
www.tamalivestock.com

WESTERN IOWA MACHINERY AUCTION

FRIDAY, NOVEMBER 25TH
AND SATURDAY, NOVEMBER 26TH
209 7TH STREET • CORRECTIONVILLE, IOWA
FRIDAY 5:00 P.M.

Online Only Auction of tools, livestock, equipment, small trailers, lawn mowers and other acreage related items.
Including: IH Wheel Weights, Coates Tire Machine, Coates Spin Balancer, Skid Tree Spade, New Skid Attachments, Aladdin Pressure Washer Lots of Concrete and Construction Tools.

SATURDAY 10:00 A.M.
 Live and Online Auction of Large Items and Machinery

Tractors, Skidloaders, Trencher & Attachments: '21 John Deere 3039R w/Loader (35 Hrs, MFWD, Cab, Quick Hitch), John Deere 6215 (Power Quad, 2500 hrs), John Deere 3010 (Gas), John Deere 2510 (Gas, Powershift), John Deere 1520 Utility (Diesel), John Deere 1020 High Crop Utility (Dsl, Nice), John Deere 730 (Dsl, Parts Tractor, 3 Pt), '14 Case IH Farmall 85 C (385 hrs, MFWD, Cab), '17 Case IH Farmall 75C w/L630 Loader (217 hrs, MFWD, Cab), Case IH 7130 Magnum (MFWD), '66 International 656 Utility (Gas, Fast Hitch plus Adapter), Farmall B, Case 1825 Skidloader (976 hrs, Auger, Forks), Mustang 330 Skidloader, Ditch Witch 3500 Trencher (Dsl).
Tillage, Planting, Spraying, Equipment: John Deere Disk (12'), IH 900 Cyclo Planter (8R, 30 John Deere 7000 Planter (6R, 30"), Kinze 3000 (6R, 30", Interplants), Fast 9610 Sprayer (60' Boom), Fimco Sprayer (500 Gal), Ag Chem 844 Row Gator, SMC Hyd Drive Fertilizer Cart.
Hay & Livestock Equipment: 8312 Disk Mower, Hayliner 37 In Line Hay Trailer, Case IH Magnum 6000 Gal Honeywagon, Gehl 170 Feedwagon, Holcomb 1200 Scraper.
Combine, Heads, Wagons, Grain Handling: IH 1420 Combine (Used this fall), Two J&M Gravity Wagons, Bradford Gravity Wagon, Dakon Gravity Wagon, 25+ Gravity Wagons (From a Single Owner), **Augers:** Feterl 10x72, Westfield 13x40, Peck 12x35, Peck 10x30, Three Westfield Hyd Truck Hoppers,
Pickups, Trailers, Gator: Custom Mini-Peterbuilt 359 Pickup (5.9 Cummins, 5 Spd, Sharp!), '97 Dodge 3500 (Dsl, Ext Cab, 5 Spd), Farm Dump Trailer (16'), '67 Jeep Pickup (4x4), John Deere 8251 Gator (S4, 371 Hrs).

Note: Please Notice that the small item auction is online-only & a standard 10% Buyer's Premium will apply. The large item auction will have no buyer's premium in person & a 3% online. Pick up & payment of online purchases will be Saturday from 1:00-5:00 p.m. along w/Monday and Tuesday 9:00 a.m.- 5:00 p.m.

Drop-offs taken and loader available 9:00 am - 5:00 pm until November 18th
 (excluding Sundays). Earlier drop offs by appointment.

To consign, call Kurt Paulsen (712) 870-8182
Paulsen Auctions
www.paulsenauctions.com
HALLBERG AUCTION
800-373-2255
www.hallbergauction.com

ACREAGE AUCTION

SATURDAY, DECEMBER 3, 2022 10:00 AM

SALE TO BE CONDUCTED AT THE PROPERTY LOCATED

19055 COPPERHEAD ROAD, OTTUMWA, IOWA

Southwest of Ottumwa on Lake Road to Copperhead Road, then west 3 miles OR 2 miles East of Blakesburg, Iowa on Bluegrass Road approx. 2-1/2 miles to Copperhead Road, then Southeast 2-1/2 miles
 Auction Signs Will Be Posted

REAL ESTATE: 3-bedroom, ranch-style home, built in 1976. Large living room, eat-in kitchen and full bath, on the main level. This home has a full, walk-out basement, containing two bedrooms with full bath, family room and utility area. 24'x30' garage, built in 1995, with full concrete floor, with large shop area. There is also a 26'x45' enclosed pole building, for equipment storage. This acreage is nearly 4 acres in size, with lots of timber. If you are looking for a property to update and personalize, this is it. Beautiful views, scenic location. Rural water. Ottumwa Community School District.



TERMS: 20% down day of sale, balance in cash upon delivery of A Court Officer Deed, accompanied by Abstract of Title showing merchantable title. Real estate taxes will be pro-rated to possession date, possession given upon settlement.

REAL ESTATE WILL SELL AT 12:00 NOON

For further particulars or an appointment to inspect the property, please call the auction company:
 641-682-5465.

Watch future publications for a complete sale ad including household, baby grand piano, antiques, tools, tractor & equipment.

Announcements made day of sale take precedence over any advertising.

MARLIN A. WOOLLUMS TRUST, OWNER

South Ottumwa Savings Bank, Trustee Paul Zingg, Attorney

AL MARTIN REAL ESTATE & AUCTION CO., INC.
307 Church Street • Ottumwa, Iowa
641-682-5465
 Find us on Facebook at Al Martin Real Estate Co **www.almartinauctions.com**

WANTED
Standing Timber
 Buying Walnut, Oak and Maple
 20 Years In The Business
 I Pay Before I Cut
 RJ Lumber LLC • Raymond Yutzy
 VM: 641-722-3348

CUSTOM LOG SLABBING SERVICES: No Log is Too Big! Maximum Log Capacity 90 Inches Diameter by 27 Foot Long. Jaguar Lumber 641-664-2080 TFN

FOR SALE: USED STEEL PIPE 2" to 48" Diameter, Located: Carrollton, MO. Redmount Midstream LLC. For Details Call. 660-542-3000 12-23

LOOKING TO LIQUIDATE OR DID YOU JUST INHERIT STUFF: Let Me Help. On-Site Tag Sale Services. Personal Property And Collectible Consultation. Also Seeking Baseball Cards, Furniture, Comic Books, The Unusual, And Anything Of Value. Before Throwing Out Your Potentially Valuable Items, Contact Me. CAGA Certified. Nathan Lilley. 573-253-4159 TFN

TIMBER MANAGEMENT: Buying Standing Timber. Bonded & Insured. PAID IN FULL PRIOR to HARVESTING. Specializing In Walnut - Oak - Maple. Cole. 641-895-8209 12-31-22

2020 Honda Pioneer 5
 1000 Limited,
 Roof, Windshield,
 Only 1,100 Miles

NO DOC FEES! **\$20,995**

C&C Cycle
 Chariton, IA • 888-475-2243
www.cc-cycle.com

www.hawkeyetrader.com

BUYERS & SELLERS WANTED

NEXT AUCTION | SAT., DECEMBER 17, 2022



join us on facebook!

2022
CONSIGNMENT AUCTION

Shay Esbeck 660-605-0839 | Barney Esbeck 660-605-0841 | Justin Harlow 660-605-2346

HAULING AVAILABLE • LIVE & ONLINE BIDDING • NATIONWIDE ADVERTISING • CONSIGN NOW!

BandSequipmentsales.com

GALLATIN | MISSOURI

BUY | SELL | TRADE | EVERY DAY



KARS, INC

ON EUCLID

www.karsincdsm.com

Ask for DeMarcus

2000 E. Euclid • Des Moines, IA

515-265-0215



2013 Dodge Durango SXT
 AWD, Loaded, CD/MP3, 3rd Row Seating,
 114K, **\$12,995**



2010 Chevy HHR LT
 4 Cyl, Auto, Full Power, Sunroof, Leather,
 107K, **\$8,995**



2014 Chevy Impala LTZ
 Loaded, Leather, Sunroof, 160K
\$11,995



2007 Mercury Milan Premier
 AWD, V6, Full Power, CD/MP3, 178K,
\$7,995



2009 Chevy Silverado K1500 LT
 4WD, Crew Cab, 5.3 V8, CD/MP3,
 Well Equipped, 145K, **\$16,995**



2013 Honda CR-V EXL
 4WD, Full Power, Heated Leather,
 CD/MP3, Sunroof, 144K, **\$14,995**



2009 Ford Edge SEL
 AWD, V6, Full Power, CD/MP3, 178K,
\$7,995



2013 Ford F150 Super Cab
 4x4, V8, Auto, Full Power, 104K
\$18,995



2013 Chevy Equinox LT
 AWD, Loaded, Full Power, 135K
\$9,995



2011 Chevy Silverado K1500 LT
 4WD, Crew Cab, 5.3 V8, Nicely Equipped,
 130K, **\$17,995**



2013 Chevy Traverse LT
 V6, Loaded, Full Power, 3rd Row Seating,
 CD/MP3, HD Radio, 142K, **\$10,995**



2005 Nissan Frontier
 4WD, Crew Cab, LE, V6, Auto, Loaded,
 Sunroof, 132K, **\$13,995**



2011 Chevy Silverado K1500 LT
 4WD, Crew Cab, 5.3 V8, Z71, Loaded,
 CD/MP3, 130K, **\$17,995**



2013 Jeep Wrangler Sport
 4WD, V6, Auto, Air, CD/MP3, 144K
\$22,995



2008 Lexus RX350
 350 AWD, Full Power, Leather, Loaded,
 Sunroof, 144K, **\$12,995**

TIMED ONLINE | NO-RESERVE



FARM RETIREMENT AUCTION

**BIDDING CLOSES: MONDAY, DECEMBER 12, 2022
STARTING AT 11:00 AM^{CT}**

PHYSICAL ADDRESS: 8022 INDEPENDENCE AVE., WATERLOO, IA



INSPECTION DATE: FRI., DEC. 9TH • 10:00 AM - 3:00 PM

HIGHLIGHTS: '96 JD 8100 MFWD tractor, 7,880 hrs.; '94 JD 8100 2wd tractor, 6,018 hrs.; '91 JD 2555 2wd tractor, 4,177 hrs. - one owner; '07 JD 9660STS 2wd combine, 3,696 eng./2,491 sep. hrs.; '92 JD 925 25' platform; JD 843 8 row 30" corn head; Unverferth HT25 25' head cart; White 6180 16 row 30" planter; Shop built seed tender; Tyler Patriot XL self-propelled sprayer, 4,868 hrs.; Brent 640 gravity wagon; Brent 540 gravity wagon; (2) Parker 4800 gravity wagons; GSI 12"x82' swing away auger; Westfield WR100-61 10"x61' auger; Westfield WR80-31 8"x31' auger; '05 Krause Landsman TL6000 24' soil finisher; JD 230 21' disk; International 183 12 row 30" 3-pt. cultivator; '79 Case 580B 2wd backhoe, showing 3,842 hrs.; Cat C5000 LP forklift, 1,469 hrs.; Yale G51-P-4040-C gas forklift; Hyster LP forklift, showing 964 hrs.; '99 Kenworth T600 semi, 787,958 mi.; '01 Wilson 43' hopper bottom trailer; Karavan 8.5'x10' snowmobile trailer; AgLeader GPS system w/ InCommand 1200 display; '06 JD X744 lawn mower; '02 Polaris Sportsman 500HD 4wd ATV; Crestliner Sportfish 170 boat, sells w/ ShoreLand'R single axle boat trailer; '99 SeaDoo GSX Limited jet ski, sells w/ Caravan single axle trailer; Also selling farm support items and shop tools.

DAVID & CATHERINE STREMPKE

EQUIPMENT QUESTIONS: DAVID (319) 230-1451

Auction Managers:

Jim Huff (319) 931-9292 & John Probasco (641) 856-7355

VIRTUAL ONLINE



KNOX COUNTY, MISSOURI LAND AUCTION

WEDNESDAY, DECEMBER 14, 2022 AT 1:00 PM^{CDT}



300 ACRES± (SUBJECT TO SURVEY) • 5 TRACTS



OPEN HOUSE: SAT., DEC. 3 • 10:00 AM - 12:00 PM

The farm is located approximately 6.2 miles northeast of Edina, MO or approximately 7 miles northwest of Knox City, MO in Sections 3 & 10, T62N•R11W, Liberty Township, Knox County, MO.

Farm represents productive tillable cropland, improved pastureland & hay production, prime Northern Missouri Whitetail Deer & Wild Turkey Hunting acreage, and a well-kept home & outbuildings.

- ✓ **PRODUCTIVE TILLABLE CROPLAND!**
- ✓ **IMPROVED PASTURELAND & HAY PRODUCTION!**
- ✓ **EXCELLENT HUNTING/RECREATIONAL ACREAGE!**
- ✓ **NICE COUNTRY HOME & OUTBUILDINGS!**

THE FOLKERTS FAMILY LEGACY TRUST

Representing Attorney: David Rouner | Rouner Law Office LLC
400 N. Franklin Street | Kirksville, MO 63501 | (660) 665-8324

Closing & Title Work: Knox County Abstract

103 South First Street | Edina, MO 63547 | (660) 397-3259

Auction Managers:

Bill Fretwell (660) 341-7735 & Jennifer Wood (217) 257-8812

VIRTUAL ONLINE



LEE COUNTY, IOWA LAND AUCTION

THURSDAY, DECEMBER 15, 2022 AT 1:00 PM^{CT}



167 ACRES± (SUBJECT TO SURVEY) • 1 TRACT

The Miller Farm is located in Section 27, Denmark Township, Lee County, IA. (1½ miles east of Denmark, IA or 10 miles southwest of Burlington, IA.)

Mark your calendars now for this upcoming Lee County, Iowa land auction. This diversified farm includes productive tillable farmland, pastureland and attractive hunting and recreational acreage. If you are looking for a property that is highly secluded, we urge you to take a look at this one that is located just east of Denmark, Iowa.

JAMES & SHIRLEY MILLER

Representing Attorney: Brian Helling

Aspelmeier, Fisch, Power, Engberg & Helling, P.L.C.
321 North Third Street, Burlington, IA | (319) 754-6587

Auction Managers: Pat Steffensmeier (319) 470-5284

Jim Huff (319) 931-9292, Jeff Hoyer (319) 759-4320



TWO DAY | TIMED ONLINE | NO-RESERVE DEALER & FARMER AUCTION

**BIDDING CLOSES: MONDAY & TUESDAY, DECEMBER 19TH & 20TH
STARTING AT 8:30 A.M. CT BOTH DAYS**

**ITEMS WILL BE LOCATED AT SULLIVAN AUCTIONEERS' FACILITIES IN ILLINOIS, INDIANA,
MINNESOTA AND OTHER OFFSITE LOCATIONS.**



**CONSIGN
NOW!**

CONSIDERING AN AUCTION? CONTACT US TODAY!

(844) 847-2161 | WWW.SULLIVANAUCTIONEERS.COM | LICENSE #44400107

ABSOLUTE FARMLAND AUCTION

Productive Row Crop, Cattle Pasture, Recreation Land

937 ACRES ± in BROWN COUNTY, KS

Selling in 7 Tracts - See Website for Photos and Maps

THURSDAY, DECEMBER 1 - 10:05 AM

Auction Location: Fairview Community Center, 511 Front St., Fairview, KS

TRACT 1 - 107 Acres m/l - Property location from Fairview, KS, East on US Hwy. 36 2-1/2 mi. to Falcon Rd., then North on gravel 1.6 miles. Located on the corner of 250th St. and Falcon Rd. Tract 1 features 107 Acres ± of rolling hill ground with some Mulberry Creek bottom. FSA records show 38.65 tillable acres with 17.19 acres in corn production this year. Balance is in grass, open timber and draws. Good to average fences for cattle, one pond, close to rural water, and excellent hunting. **TAXES: \$987.08.**



TRACT 2 - 77 Acres m/l - Located just North on Falcon Rd. to 260th St., then left (West) 1/2 mile on South side of road. Tract 2 features 77 Acres ± of good, gently rolling farmland with some creek bottom. FSA records indicate 68.84 cropland acres with 47.81 acres in corn production this year, and approx. 9.59 acres in pasture grass. The balance is in timber with some walnut trees. Farm as some diversion terraces and access to rural water. **TAXES: \$1796.41.**

TRACT 3 - 120 Acres m/l - Located from Tracts 1 & 2 on Falcon Rd. and 255th St., East approx. 1/2 mile on dirt road, on South side. Tract 3 features 120 Acres ± of gently sloping farmland with some terracing work. According to FSA records there are 87.11 cropland acres with 80.57 acres in soybean production this year, and approx. 6.59 acres of hay production, with the balance in timber with excellent hunting. There is an older structure in state of disrepair, and one well. **TAXES: \$2512.76.**

TRACT 4 - 78 Acres m/l - Located from Tract 3 East 1/2 mile to gravel Foxtail Rd., then North 1-1/2 mi. to Blacktop 270th, then East 3/4 mile, on South side of road at the corner of 270th St. and Goldfinch Rd. Tract 4 features 78 Acres ± of good rolling farmland with 66.84 cropland acres according to FSA records. This farm is in soybean production this year with approx. 63.82 acres, with the balance in waterways for hay production and some open timber. Diversion terrace work has been completed. This farm has excellent home site location with some long-range country views. Good fences for cattle and access to rural water. **TAXES: \$2605.00.**

TRACT 5 - 78 Acres m/l - Located back West on Blacktop 270th to the corner of 270th and Foxtail Rd., on the South side of road. Physical address 815 270th Street. Property features 78 Acres ± with 64.48 acres in cropland according to the Brown County FSA. There is 62.25 acres in corn production this year. Farm offers good soil types and is terraced with more acreage to be gained. There is a 3-4 bedroom home or rental property with unfinished basement, kitchen, living room/dining room combination, sink on south porch entrance/mud room, hardwood floors throughout, vinyl siding, newer thermal pane windows, good roof and rural water plus well. There is a new forced air furnace, electric water heater and AC. Older improvements include barn, smaller wooden shed for storage or carport, and others, one pond and fair to average fences. **TAXES: 3,103.43.**

TRACT 6 - 159 Acres m/l - Located from Morrill, KS, North 3 miles on Blacktop Dewberry Rd. to 320th St, then West 3 miles on the NW corner of 320th and Bittersweet Rd. Tract 6 features 159 Acres ± with 94.26 cropland acres according to FSA records with approx. 36.7 acres in soybean production and 56.11 acres in hay production, with the remainder of 64.29 acres in open pasture and timber for cattle with good fences. Great location for new home with blacktop frontage. **TAXES: \$1,583.58.**

TRACT 7 - 318 Acres m/l - Located at the Southwest corner of Tract 6 on 320th and Bittersweet Rd. Tract 7 features 318 Acres ± of gently rolling farmland with some Pony Creek bottom ground. This farm has older improvements in a state of disrepair. Some cross fences for cattle rotation and timber ground for calving and/or hunting retreat. FSA records indicate 137.74 cropland acres which at present shows 92.19 acres in corn production and 32.81 in soybeans this season. Balance is in pasture grass and hay production. Tract includes well and rural water access, some terracing and waterways in place. **TAXES: \$5,450.14.**

TERMS: 10% Down Payment Per Tract of good faith, non-refundable money to be made on day of sale entering into purchase agreement guaranteeing clear title with balance is due at closing on or before 30 days. **Each tract will be sold individually and will not be offered together in any combination.** Escrow to be held at Euler Law Offices, LLC, Troy, KS. Full possession to prepare for 2023 crop production will be given at closing. Property is being sold as is, where is. Statements made at time of auction take precedence over any advertising in print or online, printed documents, or previous statements. YAC, INC d.b.a. Younger Auction Company and its representatives are acting as exclusive agents of the sellers.

FERGUS FAMILY FARMS, LLC

Euler Law Offices, LLC, Troy, KS, Attorney for the Seller Mark Younger, Auctioneer Shannon K. Eason, Broker, 00218789



900+ LOTS ★ LARGE, 2-DAY COIN AUCTION

Dec. 3 - 10 am | Dec. 4 - 10:30 am

Younger Auction Gallery, 312 E. South Hills Dr., Maryville, MO

Featuring harder to find coins: Large Cents, Half Cent, Flying Eagle Cents, Two Cents, Three Cents, Half Dimes, Twenty Cent and Trade Dollar type; Hundreds of Proof and Mint Sets from 1956; early Silver Commemoratives; Error Coins, RPM's, Tokens and Medals; early standard issue U.S. coins of all denominations from Bust, Seated, Barber, to modern era silver and clad coinage; Gold and Silver Coins, Bullion, Currency; and a great selection of World Coins and Currency from the 1700's to modern.



MULTI-ESTATE GUN AUCTION

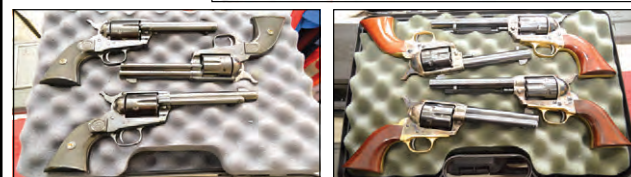
Featuring 200+ Guns – Military, Ruger Pistols & Rifles, S&W, Colts, Winchester, Marlin, German Walther P-38s, WWI & II Bayonets, Civil War Swords, and Ammo

Sat., December 10 - 10 am
Sun., December 11 - 11 am

Younger Auction Gallery, 312 E. South Hills Dr., Maryville, MO



Watch Website
For Details!



We will abide by all Federal Firearm Laws –
background checks will be required.



Mark Younger, Auctioneer

660-541-1977

Email: yac@youngerauction.com

For complete listings and more pictures visit our website

WWW.YOUNGERAUCTION.COM