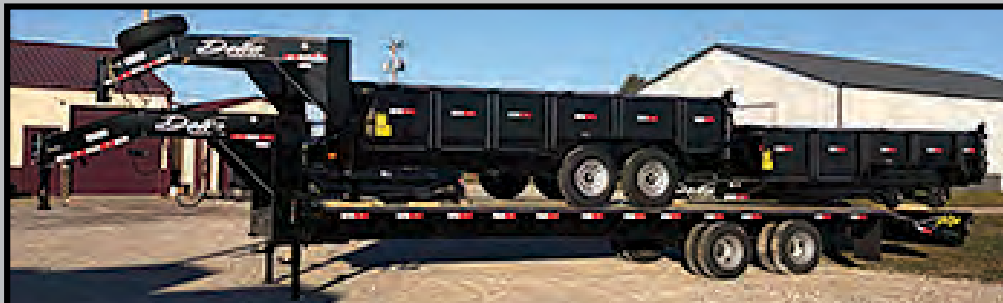


**HINSHAW**  
**TRAILER SALES**  
 RICHLAND, IA 52585

**319-456-6611**

701 Highway 78 East  
 Richland, Iowa



**Delta Gooseneck Flatbed**

32' with Dual 10K Axles, Torque Tube, Spring Assist Super Ramps, LED Lights, Toolbox Between Dual Jacks, Pipe Spools, \*\*2 IN STOCK!\*\*

**\$11,700**



**Delta Gooseneck Dump**

16'x84" with 24" Sides, Scissor Lift, Dual Batteries, Remote Control, Garbage Tarp, Ramps, LED Lights, 3 Way Rear Gate

**\$10,700**



**Delta Bumper Dump**

14'x84" with 24" Sides, Scissor Lift, Dual Batteries, Remote Control, Garbage Tarp, Ramps, LED Lights, 3 Way Rear Gate

**\$9,795**



**Maxwell (Ironstar) Bumper Dump**

10'x60" with 24" Sides, Scissor Lift, Remote Control, Tarp, Ramps, LED Lights, 3 Way Rear Gate

**\$5,900**

For our full inventory, Visit Us At  
[www.hinshawtrailersales.com](http://www.hinshawtrailersales.com)

Vol. 18 No. 49  
 December 4, 2020

**f FREE** Every Friday  
[www.hawkeyetrader.com](http://www.hawkeyetrader.com)

YOUR  
**T HAWKEYE TRADER**

Phone: 641-675-3971 • Fax: 888-203-9720 • E-Mail: [ads@hawkeyetrader.com](mailto:ads@hawkeyetrader.com)

*Slayton*  
**POLARIS**

ROUTE 2 BOX 124A, BLOOMFIELD, IA 52537

[slaytonpolaris.com](http://slaytonpolaris.com)

**660-328-6627**

**\*AG ADVANTAGE PROGRAM EXTENDED**

10% OFF 2020 RANGERS FOR FARMERS

**2020 POLARIS RANGER 1000**

*CALL DEAN OR TIM FOR SPECIAL PRICING!*





## UPCOMING AUCTION CALENDAR

### Baasch Inventory Reduction Online Auction

Oriska, ND | Closes: December 7 at 10AM

### Querna Farm Equipment Online Auction

New Richland, MN | Closes: December 7 at 1PM

### Franklin County, IA Land & Real Estate Online Auction

Ackley, IA | Closes: December 7 at 4PM

### Poley Estate Personal Property Online Auction

Multiple Locations in IA | Closes: December 7 at 5PM

### Larson Farm Online Auction

Otsego, MN | Closes: December 7 at 7PM

### Quality Tested Hay Online Auction - 2 Rings

Steffes Group, Litchfield, MN | Closes: December 8 at 12PM

### Norton Farm Retirement Online Auction

Jefferson, SD | Closes: December 8 at 1PM

### Steffes Truck & Transportation Online Auction

Steffes Group, Mt. Pleasant, IA | Closes: December 8 at 1PM

### Steffes Online Auction - 2 Rings

Upper Midwest Locations | Closes: December 9 at 10AM

### Secured Lender Farm Equipment Online Auction

Steffes Group, Mt. Pleasant, IA | Closes: December 9 at 1PM

### Sliter Farm Retirement Online Auction

Hampton, IA | Closes: December 9 at 3PM

### Stones Farms Retirement Auction

Lebanon, KS | December 9 at 11AM

### Central Equipment Sales

Inventory Reduction Online Auction

Multiple Locations | Closes: December 9 at 7PM

### Pauman Estate Online Auction

Steffes Group, Litchfield, MN | Closes: December 9 at 7PM

### Arnold Companies, Inc. Online Auction

St. Cloud, MN | Closes: December 10 at 10AM

### Western Minnesota Farmer

Excess Equipment Online Auction

Western MN Area | Closes: December 10 at 10AM

### Mason City, IA Multi-Party Farm Equipment Online Auction

Mason City, IA | Closes: December 10 at 10AM

### Mower County, MN Tillable Land Auction - 182± Acres

Hayfield, MN | December 10 at 1PM

### Steffes Constructions Consignment Online Auction

Upper Midwest Locations | Closes: December 10 at 2PM

### Grain Handling Facility Online Auction

Shelly, MN | Closes: December 10 at 3PM

### Grain Handling Facility Online Auction

Cut Bank, MT | Closes: December 10 at 3PM

20' & 40'  
Storage Containers  
Starting at \$1,895  
For Sale or Rent



Dry & Mouse Proof  
ABC Portable Storage  
Delivery Available  
563-299-2901

## TUFFY SPECIAL

VOLUME PRICES

573-657-2176

www.amegamobilehomes.com

## AG RELATED

FOR SALE: (2) John Deere 4020 D Tractor, 1970, One Owner, Good Sheet Metal, Poor Paint, 10,000 Hrs Or John Deere 4020 D Tractor, 1968, 6000 Hrs, With Great Bend QT Loader, \$12,500 Choice. Call. 573-881-3557 12-4

FOR SALE: John Deere 6130 R Tractor, MFWD, Cab, Power Quad, 2600 Hrs, Left Had Reverser, Joystick, Triple Hy, All Bells And Whistles, With 641 R Self Leveling Loader, \$77,500. Call. 573-881-3557 12-4

★★★★★  
**5-STAR**  
SPRAY FOAM INC.  
BROOKLYN  
MONTEZUMA  
We Now Offer CONCRETE  
RAISING & LEVELING  
Open Cell & Closed Cell Foam  
Call or Email Craig  
**641-328-4163**  
fivestarsprayfoam@gmail.com  
NEW CONSTRUCTION, REMODELS, POLE BARN  
CRAWL SPACES, ATTICS & MORE  
Free Estimates • Fully Insured  
WWW.5STARSprayfoam.com

DES MOINES DIESEL INC  
Servicing All Your  
Diesel Fuel  
Injection Needs  
Pumps,  
Nozzles &  
Turbos  
Ag & Truck Performance Parts  
1-800-475-6086 • 515-265-7318  
3211 Delaware Ave Des Moines, IA 50313  
1 Blk E. of the ADM Soybean Plant

FOR SALE: 8N Ford Runs Nice, New Rear Tires And Rims, Very Straight Tin, Live Hydraulic Loader With Snow Bucket, \$2,850; 25 Older Tractors, 20 Loaders, 15 Blades 2 Or 3 Pt., 6 Ft., 7 Ft., 8 Ft., 9 Ft., 3 Pt. Snow Blowers 7 Ft. 8 Ft.; 3 Pt. GNUSE Hyd. Buckets, 6 Ft., 7 Ft., And 9 Ft., Pomeroy, IA. 712-299-6608 12-18

FOR SALE: John Deere 4455 Tractor, MFWD, Power Shift, New Rubber, 7800 Hrs, Factory Duals, 2 Owners, Good As It Looks, \$43,500. Call. 573-881-3557 12-4

FOR SALE: New 3 Pt. Tillers, Heavy Duty, Gear Driven, 7 Ft to 10 Ft, Starting at \$2,650. 660-874-4455 1-28-21

FOR SALE: John Deere 4230 Tractor, 9000 Hrs, Iowa Tractor, Turbo, Clean Inside/Out, Loader Available, \$18,950. Call. 573-881-3557 12-4



**Carroll**  
Construction Supply  
1111 Wildwood Drive  
OTTUMWA, IA 52501  
641-683-1888  
carrollsupply.com

We Now Carry Hillsboro Truck Beds in Stock!  
• Aluminum Beds Starting @ \$2,950 • Steel Beds Starting @ \$1,950

3500 SERIES ALUMINUM TRUCK BEDS  
HILLSBORO STEEL GI TRUCK BEDS  
INSTALLATION AVAILABLE

- Rental Equipment & Wall Forms
- Concrete Equipment New & Used
- Insulated Concrete Forms
- Rebar & Fabrication
- Foundation Water Proofing Products
- Culverts
- Stabilization Fabric
- Decorative Concrete Supplies By Butterfield Color
- We Are A Dewalt Dealer
- Stump Grinder Rental Available

Wilson Ranch Hand  
Find us on: facebook.  
@ Carroll Distributing & Construction Supply, Inc.

Call For A Location Near You!

SOUTHEAST IOWA STEPS  
More Sizes Available  
For Sales & Service Please Call Chris At 641-919-6922  
Check Us Out On Facebook

Steps • Stock & Custom Railings

2013 FLSTN Amber Red, Vance & Hines Exhaust, Windshield, Lite Visors, Only 5,000 Miles  
NO DOC FEES!  
**\$13,995**  
C&C Cycle  
Chariton, IA • 888-475-2243  
www.cc-cycle.com

We have a great selection of ...  
**Yoder's KOUNTRY KORNER**  
Quilts & Gifts  
Cambridge Collection  
in your choice of wood, stain color and hardware.  
This collection offers: bed, dresser, nightstand, lingerie chest, armoire, blanket chest, tv night chest and mirror.  
21050 ICE AVENUE • BLOOMFIELD, IA  
641-664-2545 V.M. • MON.-SAT. 9-5  
KOUNTRY KORNER Bakery  
Bakery Hours:  
Fri. & Sat. 9 AM-5 PM  
21050 Ice Avenue ~ Bloomfield, Iowa 52537  
641-664-1747 v.m.

**T.H.E. COMPANY** TOM HASSENFRITZ EQUIPMENT  
**MT PLEASANT, IA.** [WWW.THE-CO.COM](http://WWW.THE-CO.COM)  
**800-634-4885**

 <b>overhauled</b> <b>\$12900</b>	 <b>\$7495</b> <b>Factory 3 point</b> <b>Factory wide front</b>	 <b>As low as \$593/mo</b> <b>0% Financing Available</b>	 <b>As low as \$515/mo</b> <b>0% 60 month Financing</b>
JD 4020, Console, Dual Valve, like new tires, K&M Step	JD 620, like new tires, PS, good paint new seat & WP	2020 JD 4066R, 440R Loader, Diesel, 4WD	NEW JD 4052M, 400E Loader Hydro
 <b>\$7295 \$6995</b>	 <b>\$13495</b> <b>just 220 hrs</b>	 <b>\$10995.</b>	 <b>\$10900</b> <b>680 Hours, Super Clean</b>
JD 2210, 62" Deck, DSL, 4WD, 3pt, Will Sell Loader @ Cost	JD 1025R, MFWD, Loader, 60" mower Like new	JD 1026R w/60D Deck, front brush guard	JD 2305, DSL, 4WD, Hydro, 3pt, Loader, 62" Deck
 <b>\$15999</b> <b>New!</b>	 <b>\$1495.</b>	 <b>\$999</b>	 <b>Must Go!</b> <b>Priced like steel!</b>
2004 Case/IH JX75 Maxxima, 72 HP DSL, 62 HP PTO	Bobcat Skid loader heavy duty snowblade	Heavy duty 12' snow blade Skid loader Quick tatch	Aluminium Trailer 76" x 12' \$2399. 84" X 14' \$2529.
 <b>\$15999</b> <b>New!</b>	 <b>\$1995.</b>	 <b>\$1395.</b>	 <b>Save \$100!</b>
New Woods 15' Batwing Cutter, HD Aircraft Tires	Pulverizer, large long teeth, large heavy roller	Includes hoses, tips Heavy duty post puller Priced tlike the cheap ones!	SAE upper/lower bars Heavy duty Forks 48" HD forks 52" wide
 <b>\$9995</b> <b>Just 3892 hrs</b>	 <b>\$4995</b>	 <b>\$10900</b>	 <b>\$7995</b>
Toyota 7FGU25 Triple sideshift 3892 hours	Clark GPX25E 5K triple mast JUST 4700hrs!	Toyota 6FGU30, 132" FFL Mast, SS Fork Positioner, LP	1999 Cat GP25, 5K, Full Free 130", SS, LP, Cab, 7450 Hrs
 <b>\$10000</b> <b>\$8995</b>	 <b>\$6995</b>	 <b>\$4295</b> <b>Pneumatic Tires</b>	 <b>\$9095</b>
Cat CAGP40, 6399 Hrs, 8000LB Lift, 130" Mast, LP, Pneumatic	Yale GLP065TG, Triple Mast, SS, LP, 5,800 lb Lift	Toyota FG30, 6000 lb Lift, Double mast 130", SS, Gas	2006 Caterpillar P5000, 3700 Hrs, LP, Triple Mast, SS

**We Need Skid Steers!**

▪ Tractors ▪ Forklifts ▪ Construction  
 ▪ Pallet racking Skid Steers!  
 Have equipment to sell? We also sell on consignment. We get your price, not the BUYERS!

**SNOW BOX BLADES**  
**Starts at \$999**

- 1/4" Construction
- Choice of Mounts
- floating Skid/Shoes
- Reversible Cutting Edge
- Choice of cutting edges

60" \$999, 72" \$1099, 96" \$1300, 120" \$1499.

**CENTRAL IOWA FEATHERLITE TRAILER SALES**

**FEATHERLITE TRAILERS**  
*Safe. Secure. Smart.*  
 P.O. Box 100, Hwy 65 • Bondurant, Iowa 50035

**Model 8127 Livestock Trailer**  
 Over 30 New And Used Livestock Trailers In Stock

**Featherlite Model 3110**  
 17'-20' Lengths.  
 New And Used In Stock

**Bravo Trailers**  
 Steel Frame Aluminum Skin Enclosed Trailer. 5'x8' to 8'6"x24' In Stock

**2018 CM Trailers Are Starting To Arrive!**  
 This 6'x16' Livestock Trailer Starting At - \$5,495

**1-800-240-8110**  
 Check Out Our Website for Current Used Inventory  
 CLICK HERE: [www.centraliowafeatherlite.com](http://www.centraliowafeatherlite.com)  
 PHONE: 515-967-8735 • FAX: 515-967-8736

**YOUR ONE STOP TACK SHOP**  
**Farmers' Harness Shop**  
 Located 2 miles east of Drakesville, then 1/4 mile north.

**SPECIAL On Wood Shavings Through 9/30/19**

**Mini Flakes**  
**\$5.25**

**Horse Bedding**  
**\$4.95**

**641.722.3642 v.m.**  
 Open 8 to 5; Closed Thurs. & Sun.  
 16721 Kelp Ave. • Bloomfield, IA 52537

**YODER Lumber**

Bring Your Plans In For **FREE ESTIMATE** Full Line Of Building Materials

**COMMERCIAL - AGRICULTURAL RESIDENTIAL**

17893 212<sup>th</sup> Street • Bloomfield, IA 52537  
 641-722-3605 • Mon. - Fri. 7 AM - 5 PM

**MILLER'S METAL SUPPLY**

Specializing in Roll Forming  
 • Pole Barn Packages  
 • Re-Roofing  
 Full Line of Building Materials

1187 Orange Ave, Kalona  
 319-646-1103 vm  
**Bring In Your Plans for a Free Estimate**

**AUCTION**  
**SATURDAY, DECEMBER 12TH, 2020 AT 11:00 A.M.**  
 FAIRGROUNDS COMMUNITY BUILDING - 1146 W. SUMMIT STREET - WINTERSET, IOWA

**ANTIQUES & COLLECTIBLES:** J&P Coates ash 6-drawer spool cabinet; Double mirror what-not shelf; 6 Walnut cane bottom chairs; Walnut marble top parlor table; Fancy Walnut sideboard; Walnut dresser; Wooden Buck Knife display case; Child's high chair; Misc chairs; A lot of Imperial Candlewick; Picnic basket; Old Christmas items... Lighted Santa Claus The Movie sign, Lighted 24" Santa's Elf, Papier Mache Santa, Lighted Christmas tree stand; Lighted Santa, 1-4' tall & 3 other aluminum Christmas trees; Several ornaments; Several framed "Calendar Girl" prints by Rolf Armstrong; 50+ prints-Gutman & others; Buffalo & other pottery; Several Yard Long prints; Boudoir lamps; A lot of creamers; Brass blade fan; Butter mold; Teapots; Beater jars & other old kitchen items; Elec Aladdin lamp; Table lamps, one w/a gate, need small repair; Graniteware; Lots of silverplate, including silverware; Grundig Majestic table-top radio; Philco wooden case roll up front table top radio; Radio table w/chair, less radio; Nice wooden spice cabinet; Tool tote; Brass umbrella stand; Stick telephone; Heavy cast iron footstool; Large 24" glass vase; Slag glass lamp shade; and more.



**MISCELLANEOUS:** Counter-top dorm fridge; Walker; Nice lift chair; Turkey cooker; Camp cookware kit; 2 dip nets; Coleman stove; 6 gun locks; Sports Afield field glasses; Ground target; Metal clay trap thrower; Minnow buckets; 4-gun gun rack; Fish cleaning rack w/knife; 22 snap caps; and more.

**TERMS OF SALE:** ID is required to receive bid numbers. We accept cash and checks, no cards. We are not responsible in case of accident or theft. Thank you. LUNCH SERVED

**HARTMAN AUCTIONEERING**  
 Steve Hartman - Cell 515-468-7857, Home 515-462-4584  
[www.hartmanauktionering.com](http://www.hartmanauktionering.com)

**FOR SALE:** John Deere 7630 Tractor, MFWD, 7000 Hrs, 746 Loader, Bucket, Spear, Power Quad, \$59,500. Call. 573-881-3557 12-4

**FOR SALE:** Cattlemen New Heavy Iron Corral Panels, \$60. We Also Have Accessories! Free Replacement If Anything Gets Damaged. 816-507-3116 Or 816-898-0234 12-25

**FOR SALE:** John Deere 4240 Tractor, 1982, CAH, QR, 9926 Hrs, One Owner, Ft Fenders, Extra Lights/Mirror, 95% Firestone Factory Duals, Really Sharp, \$26,500. Call. 573-881-3557 12-4

**FOR SALE:** John Deere 855 Compact Tractor With Loader And 72 Inch Mower Deck, Hydro, 3 Pt., New Tires, Very Good Condition, \$7,950. 641-572-0061 12-4

**FOR SALE:** 24 Ft x 5 Ft Free-Standing Cattle Panels, Weighing 600 Lbs Each, Fastener Chains Included. Located in Troy, IA. 641-680-0892 TFN

Let  it Snow

**Crystalyx** Brand Supplements **BEYOND SUPPLEMENTATION**

**HE-20™**  
 BETTER FORAGE UTILIZATION - EXTEND WINTER PASTURES  
 IMPROVE GRAZING DISTRIBUTION

Available at:  
**QUALITY PLUS FEEDS**  
 2033 Locust Street, Saint Paul, IA 52657  
 (319) 469 - 3167 | [www.qualityplusfeedinc.com](http://www.qualityplusfeedinc.com)

**FOR SALE:** John Deere 2940 Tractor, CAH, Hilo, Estate Tractor, 5300 Hrs, Set For Many Years, Shifting Cables Stiff, New Rubber, \$13,500. Call. 573-881-3557 12-4

**AUTOMOTIVE**

**FOR SALE:** 2004 Ford F350, Crew Cab, Lariat, 4x4, 6.0 Powerstroke, 133K Miles, New Tires And Injectors, No Rust, Very Good Condition, Asking \$12,500 OBO; 2015 Max 1 Big Bale Hauler With Lights, Good Condition, \$650 OBO. 641-799-3879 12-15

**WANTED:** Good 327 Or 350 Chevy Engine, Complete With 350 Transmission. Milo, IA. 515-669-3838 12-11

**ATTN TRUCK OWNERS:** Rhino Linings Offers You The Worlds Number One Sprayed In Truck Bedliner. Also Works On Livestock Tanks, Creep Feeders, Horse Trailers, Etc. Call For An Appointment & More Info. 641-799-5672 TFN

**LIVESTOCK**

**LOOKING TO BUY:** Horses, Tack, Saddles, Horse Trailers, Etc. Cash In Hand, Call Wyatt. 618-535-9966 1-1

**WANTED:** Small Donkey, No Biting, No Kicking, She Will Have A Good Home. 641-347-5103 12-4

**BULLS FOR LEASE:** Over 70 Registered Angus & Hereford To Choose From. 90 Day Lease \$900. Trucking Available At Extra Charge. Kingdom City, MO. 573-999-3197 TFN

**WANTED**  
**Arrowheads, Axes, Indian Artifacts**  
 Serious Collector Paying Cash & Offering Free Appraisals  
**Jeff Hipskind**  
 Call, Text or Email (563) 357-2918  
[Hipskindj@yahoo.com](mailto:Hipskindj@yahoo.com)

**WILL SULLIVAN AUCTION Co.**  
 No-Reserve Online-Only  
 Bidding Ends Saturday, December 12th, 2020  
**650 Firearms**

**W**

FOR MORE INFO & BIDDING CATALOG GO TO:  
[WILLSULLIVANAUCTION.COM](http://WILLSULLIVANAUCTION.COM)

**CATTLE FOR SALE:** 40 Blk & Blwf 2nd & 3rd Period; 35 Blk Calving Now; 20 Red Angus Cross Cows 2nd & 3rd Period; Also Black & Red Bulls. 660-838-6247 Or 660-537-6247 12-18

**MISC**  
**BUY SELL OR CONSIGN:** To Auction Indian Artifacts Rare Coins, Pocket Watches, Diamond Jewelry.  
**McKee Coins**  
 213 East Main  
 Ottumwa, IA 52501  
 641-684-6006 12-11

**FIREWOOD FOR SALE:** \$50 Per Load, Call Brent. 641-814-2562 12-11

**FOR SALE:** Portable Building (New) 4 Ft. X 4 Ft., One Window, Walk In Door, And Small Animal Door, \$200. Will Text Photo. 641-895-7982 12-4

**Rafter C AUCTION**

**Monday, December 14, 2020**  
**\*ONLINE AUCTION\***  
 Starts Closing at 7 PM

**1951 John Deere B**    **1967 Chevrolet C50 Grain Truck**    **2004 Dodge 1500 SLT Quad Cab**    **J&M Header Trailer**

24' GREAT PAINS DRILL • HOTSY POWER WASHER  
 GOOSENECK 2 HORSE SLANT W/LIVING QUARTERS TRAILER  
 SEVERAL TOOL LOTS • GUNS/AMMO • SEVERAL MISC ITEMS

Check Out our Website for more Listings  
[www.sewellauctionservice.com](http://www.sewellauctionservice.com)  
**660-646-1957**  
**And Remember Rain or Shine bid Online!**

*Where Quality Comes First*

Are You Thinking About A Building? Bring Your Size And We'll Give You A FREE Price Quote!  
WE WILL ENGINEER YOUR TRUSSES TO YOUR SPECS

**BUILDING PACKAGES (TAXES INCLUDED) SERVING THE TRI-STATE AREA SINCE 1992**

**Call For Pricing On Building Packages!**

**- WE WILL DELIVER -**  
FREE ESTIMATES ON ALL BUILDINGS  
WE MANUFACTURE STEEL ROOFING, SIDING AND TRIM, CUT TO THE INCH.

**BUY DIRECT AND SAVE!**

**BUILD IT YOURSELF OR HAVE ONE OF OUR PROFESSIONAL CONTRACTORS DO IT FOR YOU.**

*We Work Hard For Your Success. Your Business & Satisfaction Is Important To Us!*

**4 MILES SE OF REVERE, MO OR 6 MILES NW OF WAYLAND ON C. 26758 HWY C., ALEXANDRIA, MO 63430**

**WAGLER METALS Missouri Warehouse** MON.-FRI. 7AM-5PM SAT. 7AM-2PM

**BETTER BUILT  
12 & 14 BALE HAY TRAILERS  
NOW AVAILABLE**



**At KJ Trailer & Ranch Equipment Sales LLC**  
Kelly Kiefer - 641-344-6735

**Hwy 2 West • Corydon, IA • 641-344-6735**

**MAST VINYL WINDOWS**  
THERMO-PRO WINDOWS

**Custom Size Is Our Specialty**  
Professional Installation Available  
**FREE ESTIMATES**

22172 Hwy. 63  
Bloomfield, IA 52537  
**800-206-9949**

**BUYER OF STANDING TIMBER:** Walnut & Soft Maple Are Our Specialty; Also Other Species. Bonded & in Business for 30 Years. We Pay Before Cutting. Gingerich Sawmill LLC, Bloomfield, IA. 641-722-3002 12-4

**TEUBEL SALVAGE**  
19387 ICE AVE • BLOOMFIELD, IA 52537  
**641-799-8371**

**FOR SALE**

- JD 48 Loader, Will Fit JD 4010 & 4020 w/ Hyd Fittings
- 2-JD Gators, Needs Work, \$1,500 for All
- Year Round Cabs, 1 For JD 4020, 1 For IH 806-1466
- JD DT 239 Diesel Engine w/Radiator & Clutch Housing for Power Unit, **\$2,850**
- Burner & Fan for 10,000 Bushel Grain Bin, **\$550**
- 3 Pt Hitch Backhoe w/Pump
- 2-23.1x26 Reg Tires on JD 8 Bolt Rims
- Westendorf WL21 Quick Attach Loader w/Quick Attach Bucket, Mounts for IH 300-656
- New Allied 795 Loader, 7 Ft Bucket w/IH 86 Series Mounts
- 2-18.4x30 Tires on 8 Bolt Ag HD Rims



**2017 Harley Tri-Glide**  
Excellent Condition!  
Only 3,000 Miles

**NO DOC FEES!** **\$27,995**

**C&C Cycle**  
Chariton, IA • 888-475-2243  
[www.cc-cycle.com](http://www.cc-cycle.com)

**- Want To Buy -**

**All Scarce & Old Coin Collections**  
Dimes, Quarters, Halves & Silver Dollars  
Dated Before 1964

**1/10 Oz & 1/4 Oz Gold Coins**  
Uncirculated Rolls

**1/10 Oz & 1/4 Oz Gold & Platinum Coins**  
\$500 & \$1,000 Bills

**1 Oz Silver Bars & Rounds**

**Always Call Me First Before Selling**  
Paying Cash on the Spot for Since 1971.  
Will Pick Up At Your Home, Office Or Bank

**Wallis Company - Max Hagen**  
Cedar Rapids, IA  
Call 319-396-7760 to Discuss Your Collection

**LARGE ESTATE TAG SALE:** December 10th And 11th From 3-6 PM, December 12th, 8-12 (Most Items 1/2 Price). 3 Households Of Items In A Large Heated Building. Something For Everyone. 11415 Hwy F62 Sully, Iowa 12-11

**FOR SALE:** New - Redwing Camo Hunting Boots, Insulated, Waterproof, Size 8D. Used - Camo Hunting Boots 8D. Used - Dress Boots, 7 1/2. 319-647-3328 12-4

**FREE HEAT & HOT WATER:** Eliminate Monthly Heating Bills w/Classic Outdoor Wood Furnace. No Sunday Calls. 660-707-3866 TFN

**FOR SALE:** Portable Building (New) 4 Ft. X 4 Ft., One Window, Walk In Door, And Small Animal Door, \$200. Will Text Photo. 641-895-7982 12-4

**REAL ESTATE**

**LINCOLN HOMES SPRING SALE!:** Quality Built Modular & Manufactured Home On Display. Factory Direct Prices With Free Set Up & Installation Within 100 Miles. Lincoln Homes Hwy 30 Ogdan, IA 50212 [lincolnhomesia.com](http://lincolnhomesia.com) 515-275-2717 TFN

**AG RELATED**

**FOR SALE:** (2) John Deere 4020 D Tractor, 1970, One Owner, Good Sheet Metal, Poor Paint, 10,000 Hrs Or John Deere 4020 D Tractor, 1968, 6000 Hrs, With Great Bend QT Loader, \$12,500 Choice. Call. 573-881-3557 12-4

**FOR SALE:** Cattlemen New Heavy Iron Corral Panels, \$60. We Also Have Accessories! Free Replacement If Anything Gets Damaged. 816-507-3116 Or 816-898-0234 12-25



**Cut-to-Length Metal for Roofing Siding & Trim**

**Buy Direct**  
**Snap Lock Standing Seam Roofing Rolled On Site**  
**Interior Liner Steel**



*"Our Business is Rolling!"*

**AFFORDABLE METAL MANUFACTURING**  
563-264-8212

**303 Cleveland St Muscatine, IA 52761**  
Email: [amminfo7@gmail.com](mailto:amminfo7@gmail.com)  
[www.affordablemetalmfg.com](http://www.affordablemetalmfg.com)

**Where Quality and Affordability Meet**




**BUYING:** Gold, Silver, Bullion Scrap Jewelry, Pocket Watches, Rare And Uncirculated Coins, Foreign Coins, Currency U.S. And Foreign, Gold Accepting Auction Material.

**McKee Coins**  
213 East Main St.  
Ottumwa, Iowa. 52501  
641-684-6006 12-4

**SCOTT HUSKEY'S HOME SERVICE!:** Insulated Skirting for Manufactured or Older Site Built Homes. Eliminates Frozen Water Lines & Cold Floors. Save 20 to 25% on Utility Costs. I Also Have an Uninsulated Heavy Duty Vinyl Skirting-Looks Great! Since 1972 573-696-3468 TFN

**LOOKING TO LIQUIDATE OR DID YOU JUST INHERIT STUFF:** Let Me Help. On-Site Tag Sale Services. Personal Property And Collectible Consultation. Also Seeking Baseball Cards, Furniture, Comic Books, The Unusual, And Anything Of Value. Before Throwing Out Your Potentially Valuable Items, Contact Me. CAGA Certified. Nathan Lilley. 573-253-4159 TFN

**NO \$\$\$ DOWN**  
**MOBILE HOMES**  
CALL FOR DETAILS  
**573-499-9993**  
[www.columbiadiscountshomes.com](http://www.columbiadiscountshomes.com)

**PETS**

**FOR SALE:** 2 Male Rat Terriers, 10 Weeks Old, Tri-Colored, \$150 Each. 641-895-4995 12-4

**PUPPIES, PUPPIES:** We Want to Buy Your Puppies! Registered or Mixed Breeds. We Have Homes Waiting for Them! 573-784-9866 TFN

**RECREATIONAL**

**FOR SALE:** 2017 Ranger XP 90 EPS Sage Green, 400 Hrs., 4500lb Wench, Flip Down Windshield, Rear Panel & Poly Sport Roof, \$9,500 OBO. 641-622-2010 12-18

**Place Your Ad At**  
[www.hawkeyetrader.com](http://www.hawkeyetrader.com)

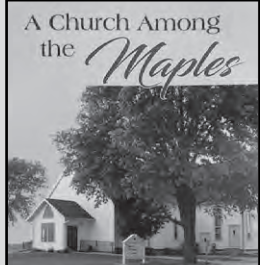
**PEOPLES COMPANY** INNOVATIVE. REAL ESTATE. SOLUTIONS. **563-659-8185**  
Specializing in Farmland and Residential Sales  
Douglas R. Yegge, Broker  
700 6th Avenue, DeWitt, Iowa 52742  
Cell: 563-320-9900  
[www.yeggemcneilland.com](http://www.yeggemcneilland.com)

**FARMLAND SALES - AUCTIONS - 1031 TAX FREE EXCHANGES**

<b>Linn Co. MO</b> 76 Acres, 71.48 Tillable. Nice Layng Farm. East of Purdin, MO. *Agent Owned	<b>Appanoose Co. IA</b> <i>PENDING</i> - 62 acres, Quality soils, high CSR, tiled & terraced. East of Seymour, Iowa.
<b>Lewis Co. MO</b> <i>PENDING</i> - 48.9 acres, 44.23 tillable, North of LaBelle, Missouri. Investment farm with recreational possibilities. High return.	67 acres, 63 tillable, West of Cincinnati, Iowa. Nice rolling parcel with possible building site.

**Now Available**

A Church Among the *Maples*



Newly-published 433-page historical resource regarding Pulaski Mennonite Church And The Pulaski Area.  
**Cost \$30 Each**  
Cash or check accepted.  
**For Further Information, Contact Barbara Baughman 641-680-3996**

# SULLIVAN AUCTIONEERS, LLC

Sullivan Auctioneers LLC is a full service licensed auction company. We are in our 41st year of professionally conducting ag equipment and ag real estate auctions throughout the country!



**TOLL FREE (844) 847-2161**  
**www.SullivanAuctioneers.com**

**A FAMILY OWNED BUSINESS SINCE 1979**

**FOR SALE:** John Deere 4455 Tractor, MFWD, Power Shift, New Rubber, 7800 Hrs, Factory Duals, 2 Owners, Good As It Looks, \$43,500. Call. 573-881-3557 12-4

**FOR SALE:** 24 Ft x 5 Ft Free-Standing Cattle Panels, Weighing 600 Lbs Each, Fastener Chains Included. Located in Troy, IA. 641-680-0892 TFN

**FOR SALE:** John Deere 7630 Tractor, MFWD, 7000 Hrs, 746 Loader, Bucket, Spear, Power Quad, \$59,500. Call. 573-881-3557 12-4

**FOR SALE:** John Deere 4230 Tractor, 9000 Hrs, Iowa Tractor, Turbo, Clean Inside/Out, Loader Available, \$18,950. Call. 573-881-3557 12-4

**FOR SALE:** 8N Ford Runs Nice, New Rear Tires And Rims, Very Straight Tin, Live Hydraulic Loader With Snow Bucket, \$2,850; 25 Older Tractors, 20 Loaders, 15 Blades 2 Or 3 Pt., 6 Ft., 7 Ft., 8 Ft., 9 Ft., 3 Pt. Snow Blowers 7 Ft. 8 Ft.; 3 Pt. GNUSE Hyd. Buckets, 6 Ft., 7 Ft., And 9 Ft., Pomeroy, IA. 712-299-6608 12-18

**FOR SALE:** John Deere 855 Compact Tractor With Loader And 72 Inch Mower Deck, Hydro, 3 Pt., New Tires, Very Good Condition, \$7,950. 641-572-0061 12-4

**FOR SALE:** John Deere 2940 Tractor, CAH, Hilo, Estate Tractor, 5300 Hrs, Set For Many Years, Shifting Cables Stiff, New Rubber, \$13,500. Call. 573-881-3557 12-4



## METAL ROOFING



Installing Metal Roofing On All types of Buildings  
 Houses & Barns Commercial & Residential  
 Customer Satisfaction Is Our Goal!

**WAGLER BUILDERS**  
 CALL TODAY FOR A FREE ESTIMATE: 641-777-5000  
 EMAIL: waglerbuilders@hotmail.com  
 www.waglerbuilders.com

## Golden Grain Bins Winter Discount

Grain Bins	Floors W/12" Supp. & Flashing
18'x18' 4,195 Bu. \$4,135	18' \$1,026 30' \$2,870
27'x21' 11,265 Bu. \$7,914	21' \$1,404 36' \$4,092
42'x24' 32,245 Bu. \$17,581	27' \$2,344 42' \$5,573



**GMLS Industries, Inc.**  
 PH: 660-699-2179  
 Or 888-983-2136  
 www.gmlsindustries.com



**"OVER" 30 Used Harley Dressers!**

**NO DOC FEES!** For \$8,995 or Less

**C&C Cycle**  
 Chariton, IA • 888-475-2243  
 www.cc-cycle.com

**\$22,000**



**1993 Peterbilt Grain Truck**  
 425HP CAT Engine, Eaton 10 Spd Transmission, 18' Reiten Aluminum Box, Good Condition  
**641-660-4507**

## NOTICE! THE HAWKEYE TRADER

reserves the right to refuse any ad or to edit any portion of an ad at any time. The Hawkeye Trader will give credit for only one week of incorrect ad copy. If there is an error in the first week's publication, call our office and an adjustment will be made. In case of error your ad may be run in the following week's edition at no charge or you may request a refund or credit on your bill. The Hawkeye Trader does not accept liability for any loss or damage caused by an error or inaccuracy in the printing of an ad beyond the amount paid for the space occupied by the advertisement in which the error occurred. The Hawkeye Trader cannot guarantee specific page or location placement of any ad. There will be a \$10 check return fee for any NSF check. We are not responsible for illegible copy received in mail. If your item in the paper is sold before your ad runs out or after we receive it we will issue you credit for further advertising. Any pictures for display ads received become the property of The HawkeyeTrader unless accompanied with a self addressed stamped envelope.

**www.hawkeyetrader.com**

# SAM'S RIVERSIDE REPAIRABLES

805 SE 30th St • Des Moines, IA • Phone 515-265-1212 • Toll Free 800-308-4096 • www.samsriverside.com  
 REPAIRABLES 515-265-1212 PARTS 515-265-8792 HEAVY TRUCKS 515-265-1656



SKU:K96787  
 2019 Dodge Ram 1500 Classic Warlock 4x4, Crew Cab, Theft, 5.7L, 8 Cyl, 14,147 Miles \$27,900



SKU:J31007  
 2018 Ford F250 XL, Crew Cab, 4x4, Diesel, Lifted, Fuel Wheels, New Mickey Thompson Tires, Long Box, Theft, 6.7L, 8 Cyl, 55,966 Miles, \$37,900



SKU:J66696  
 2018 Ford F150 XLT 4x4, Crew Cab, 3.5L, 6 Cyl, 34,089 Miles \$22,900



SKU:H66367  
 2017 GMC Sierra SLT 4x4, Crew Cab, 5.3L, 8 Cyl, 48,118 Miles \$31,900



SKU:H47383  
 2017 Dodge Ram 1500 Express Crew Cab, 4x4, Theft, 5.7L, 8 Cyl \$23,900



SKU:H53497  
 2017 Chevrolet Suburban LT 4x4, 5.3L, 8 Cyl, 58,933 Miles \$31,900



SKU:E83858  
 2014 Ford F150 XLT 4x4, Crew Cab, 3.5L, 6 Cyl, 79,267 Miles \$17,900



SKU:F39867  
 2015 Chevrolet Silverado 1500 LT Crew Cab, 4x4, 5.3L, 8 Cyl, 79,418 Miles \$23,900



SKU:B46489  
 2011 Chevrolet Silverado 1500 LT Crew Cab, 4x4, 5.3L, 8 Cyl, 70,741 Miles \$16,900



SKU:D49856  
 2013 Chevrolet Silverado 1500 LT Crew Cab, 4x4, 5.3L, 8 Cyl, 111,330 Miles \$9,950



SKU:D13737  
 2013 Chevrolet Silverado 1500 LT 4x4, Ext Cab, 5.3L, 8 Cyl, 64,201 Miles \$13,900



SKU:E22814  
 2014 Dodge Ram 2500 Big Horn Mega Cab, 4x4, 6.7L, 6 Cyl Diesel, 113,629 Miles \$32,900



SKU:G20230  
 2006 Chevrolet Silverado 1500 LS 4x4, Ext Cab, 5.3L, 6 Cyl, 115,774 Miles \$6,950



SKU:A33928  
 2010 GMC Sierra 1500 SLE 4x4, Crew Cab, Theft, 6.2L, 8 Cyl, 105,308 Miles \$12,900



SKU:B16636  
 2011 Ford F250 XLT Crew Cab, 4x4, Diesel, 6.7L, 101,624 Miles \$18,900

**Our Hours Are 8:00 AM - 5:00 PM M-F - Sat 8:00 AM - 2:00 PM - Sun 1:00 PM - 5:00 PM**

**Harbison Brush Mowing**  
 Brush Mowing • CRP Fields • Timber • Trails  
 Pasture Cleanup • Tree Shear • Fence Rows

**Jeremy Harbison**  
 Cell: 319-461-0376  
 Home: 319-694-2300

**HARBISON FENCING**  
 "For All Your Fencing Needs"  
**Barbwire • Woven Wire**  
**Silt Fence • Vinyl Fencing**  
**Hi Tensile**  
 319-694-2300 - Home  
 319-461-0376 - Cell



**Metal Roofing**

**Buy Direct**

**AW Metal LLC**  
 Metal Roofing Headquarters

641-664-3990  
 www.awmetal.net

**FOR SALE**  
**Driveway Fabric Rolls**  
 Commercial, Heavy Duty  
 Designed for Heavy Traffic  
 125" Wide • 432" Long



\$370.00/Roll  
**660-216-0938**

**USED MOBILITY**  
 Scooters & Power  
 Wheel Chairs,  
 New Batteries.  
 Good Condition.  
**Call 319-461-9005**  
 Richland

**PHEASANTS, QUAIL, PIGEONS**  
 We Have Birds To Train  
 And Freshen Your Dogs.  
 We Can Provide Birds  
 To Enhance Your Hunting

**OPEN 7 DAYS A WEEK!**

**MIKE'S GAME BIRDS**



2464 BENTON AVE  
 Mt. PLEASANT, IA  
**319-931-2774**

Twisted X • ARIAT

**Danner** SINCE 1932

RED WING SHOES

**COWBOY BOOTS, WORK BOOTS, AND ACCESSORIES! MENS & WOMENS STYLES!**

**Graber's COUNTRY STORE**

2 miles south & 1 mile east of Drakesville  
 (641) 664-3163

**CLASSIFIED COUPON**

Use the Power of Your Traders for Regional Classified Results!

Clip this coupon to run a Classified Ad for **\$8.75** for one week.

1 Classified Ad for two weeks or 2 Classified Ads for one week for **\$17.00**.

Picture ads are not included with coupon, call for pricing.

Each ad must be 20 words or less. additional 20¢ per word over 20 words

**AD NO. 1: (20 Words Or Less)**


**AD NO. 2: (20 Words Or Less)**


**Triple Your Classified Ad's Power By Running It In The Traders**  
**The HAWKEYE TRADER, SHOW ME TRADER & MID-MO TRADER!**

WHEN YOU SELECT ALL THREE TRADERS, YOUR AD WILL BE READ IN OVER 170 COUNTIES IN 5 STATES & ONLINE!

- HAWKEYE TRADER ONLY:** 1 Ad For One Week **\$8.75** (84 Counties)
- HAWKEYE TRADER ONLY:** 1 Ad For Two Weeks **\$17.00** Or 2 Ads For One Week **\$17.00** (84 Counties)
- BOTH HAWKEYE & SHOW ME TRADER:** 1 Ad For One Week **\$17.00** or 2 Ads For One Week **\$32.00** (150 Counties)
- BOTH HAWKEYE & MID MO TRADER:** 1 Ad For One Week **\$17.00** or 2 Ads For One Week **\$32.00** (106 Counties)
- BEST VALUE: HAWKEYE, SHOW ME & MID MO TRADER:** 1 Ad For One Week **\$25.00** (170 Counties)
- BEST VALUE: HAWKEYE, SHOW ME & MID MO TRADER:** 2 Ads For One Week **\$47.00** (170 Counties)

To Receive This Rate, Coupon Must Be Mailed In With your Payment  
 Or Use Our Website @ [www.hawkeyetrader.com](http://www.hawkeyetrader.com) For More Savings Options

**HAWKEYE TRADER, P.O. Box 96**  
**Pulaski, IA 52584**

[www.hawkeyetrader.com](http://www.hawkeyetrader.com)

**FARMS FOR RENT**

\* 460 Acres (Appanoose Co)

**Hay & Pasture \***

Just South of Centerville, IA  
 Includes Working Ram & Chute  
 Good Water & Good Fences

\* 90 Acres (Appanoose Co)

**Hay w/Hoop Barn \***  
 Located South of Centerville, IA

\* 45 Acres (Schuyler Co)

**Crop Land \***  
 Located East of Queen City, MO  
 Formerly CRP • Brush Has Been Cleared  
 & Ready to Farm in 2021

\* 68 Acres (Wapello Co)

**Top Quality Crop Land \***  
 Located at Ottumwa Airport  
 Available for Crop Land 2021



For Information Contact

**Darrell Limkeman**

**641-777-2307**

Email: [darrell@netins.net](mailto:darrell@netins.net)

**LAN-DOW BUILDINGS**

"We Build to Suit Your Needs"



"H" Don or Dick Middleton

**Memphis Lumber Co.**

**1-800-337-5858**

**Phone: 660-465-8595**

**Fax: 660-465-8596**



**2012 Fatboy**

Windshield,  
 Bags,  
 Vance & Hines Exh,  
 Stereo,  
 12" Apes,  
 17K Miles

**NO DOC FEES!**

**\$9,995**

**C&C Cycle**  
 Chariton, IA • 888-475-2243

[www.cc-cycle.com](http://www.cc-cycle.com)



We Sell Only the Best Products  
 And Can Meet All Your  
 Fencing & Livestock Equipment Needs

*Pipe Fencing & Pipe Corrals*  
*Woven • Barb • Pipe Lot Fences*  
*Installation & Delivery Available*

We Can Custom Make  
 Anything.....Any Size!

**Donald Gordon • 641-799-4859**

**Safe & Durable!**

Built With All New SCH 40 Prime Pipe



**Fence Line Life**  
**Time Pipe Bunk**

24" Tall x 20' Long  
 1200lbs

Cattle Don't Knock Them  
 Over Or Shove Them Around



**Heavy Duty Bale Feeder**  
**With Gate**

Over 800 lbs.

Saves Money, Feed Up To  
 30% Less Hay Per year

**Ottumwa, Iowa**



**Free Standing Cattle Panel**

5 1/2' Tall x 20' Long  
 Made From New 2 7/8" Sch 40  
 Pipe And 1 1/4" New Pipe.  
 Panels Stand Up Alone And  
 Work Well For Corrals In  
 Pasture. Extra Cattle Pens And  
 Sorting Yards. Also Have Cattle  
 Gate To Go On One End.



**Double Bale Feeder**  
**Heavy Duty With Basket**

- Continuous Fence Panels
- Corral Panels
- Heavy Duty Easy Locking & Unlocking Gate Latches
- In Line Fence Crossing For ATV's & UTV's

*Farm Estate* 9629 STATE HWY 25 SW MONTROSE, MN 55363  
From Montrose, MN: MN Hwy 25 south 4 miles. Property is on the west side of the road.

# AUCTION

**AUCTIONEER'S NOTE:** Jerry and his twin brother John farmed together their entire lives. With Jerry's passing, John decided to retire. Equipment is shedded and field ready. Viewing by appointment is welcomed.  
**LOADOUT:** Sale day OR by appointment

**FRIDAY, DECEMBER 11 | 11AM** 2020



- |   |   |  |   |
|---|---|--|---|
| <p><b>TRACTORS</b><br/>2008 New Holland T9050 4WD, 2,905 hrs.<br/>1997 New Holland 8870, 6,366 hrs<br/>1994 New Holland 8670, 8,604 hrs.<br/>1982 John Deere 4040</p> <p><b>SKID STEER LOADERS</b><br/>2014 Bobcat S750, 3,293 hrs.</p> <p><b>ATTACHMENTS</b><br/>(2) Bobcat bucket, 87" H&amp;H rock/manure grapple bucket</p> | <p>John Deere pallet forks<br/>Pallet forks<br/>Shop-Built combine head mover</p> <p><b>TILLAGE</b><br/>2013 Krause 4850 Dominator<br/>1995 John Deere 680 Wilrich QX<sup>2</sup><br/>Wilrich row crop cultivator<br/>John Deere 400 rotary hoe</p> | <p><b>PLANTER</b><br/>2012 AGCO Massey Ferguson White 8800</p> <p><b>COMBINE</b><br/>2008 Case-IH 7010, 1,229 sep hrs., 1,721</p> <p><b>HEADS</b><br/>2013 Case-IH 3020 Terra<br/>2013 Case-IH 2608</p> <p><b>TRUCKS</b><br/>1987 Freightliner</p> | <p><b>DRILL / GRAVITY BOXES / TRAILERS</b><br/><b>HAY EQUIPMENT</b><br/><b>FORAGE EQUIPMENT</b><br/><b>LIVESTOCK EQUIPMENT / AUGERS</b><br/><b>GRAIN HANDLING EQUIPMENT OTHER</b><br/><b>FARM EQUIPMENT</b><br/><b>SHOP EQUIPMENT</b><br/><b>TANKS &amp; BARRELS</b><br/><b>RECREATION</b><br/><b>MISCELLANEOUS</b></p> |
|---|---|--|---|

**SteffesGroup.com**



Steffes Group, Inc., 24400 MN Hwy 22 S, Litchfield, MN 55355 | 320.693.9371  
**SALONEK FAMILY | JOHN 952.564.1803, NICK 701.318.4619, NATHAN 612.597.8154**  
or Randy Kath at Steffes Group, 320.693.9371 or 701.429.8894  
Complete terms, lot listings and photos at SteffesGroup.com / Randy Kath MN47-007

**Heartland 20'x82" 14K**

Spring Loaded Ramps & GN Jack, Powder Coat Paint  
**\$4,750**

**Heartland 6.5x12 Tilt Trailer**

3,500 Lb Axle, 15" Tires  
**\$1,700**

**NEW 6.5x10 Tilt Trailer**

3,500 Lb Axle, 15" Tires  
**\$1,500**

**Max Kongable**  
2735 160th St. Mt. Union, Iowa 52644  
319-865-7281 • Cell: 319-931-2733



**25 ~~45~~ Trikes In Stock Ready To Go and Building More**

We Install Trike Kits on Hondas, Yamahas, Harleys, Triumphs, Victories, Suzukis & Kawasakis! Get Your Trike Kits Ordered Today!  
4 Weeks For Delivery! We Do Hannigan, California Side Car, FBI, Champion, Lehman, Frankenstein, Mystery Design, Motor Trike Kits!  
We Also Carry Can Am Spydors.  
888-475-2243 • Chariton, IA  
[www.cc-cycle.com](http://www.cc-cycle.com) - Click on Trike Gallery!  
**Prices Starting @ \$9,995 For Complete Units!**  
**Kit Prices Starting @ \$5,295**

2020 Vanderhall Carmel & Venices In Stock!

We Can Finance Kits! Zero Down Financing With Interest As Low As 4.59% WAC

**C & C CUSTOM CYCLE**  
888-475-2243

Save Some Trees! Read The Paper Online!  
[www.hawkeyetrader.com](http://www.hawkeyetrader.com)

**We want to purchase & market your grain.**

**Buyers of Corn and Soybeans. Organic & Non-GMO Corn and Soybeans.**  
Contracts Offered • Forward Pricing

**Baring Elevator** LLC

CONTACT US FOR PRICING  
Baring, MO  
660.892.4411  
[baringelevator.com](http://baringelevator.com)

**AgIron** TIMED ONLINE<sup>®</sup>  
**Mt. Pleasant**

Equipment located at the Steffes Group Facility, 2245 E Bluegrass Road, Mt. Pleasant, IA  
Inspection Day: Tuesday, December 15th from 9AM-4PM

**CLOSES: WEDNESDAY, DECEMBER 16, 2020 AT 10AM**

**AUCTIONEER'S NOTE:** Don't miss your opportunity to bid on this Timed Online Multi-Ring equipment auction. Contact our office for owner information, new consignments or changes at 319.385.2000.  
**LOADOUT:** Thursday, December 17th, Friday, December 18th, & Monday, December 21st from 9AM-4PM.  
ALL other times are by appointment only, please call 319.385.2000 to schedule.

**TRACTORS, COMBINES, DRAPER HEAD, PLATFORMS, PLANTERS, SEED TENDERS, TILLAGE, NEW SKID STEER ATTACH., SPRAYERS, SPREADERS, LIQUID APPLICATOR, GRAIN CARTS, WAGONS, HAY EQUIPMENT, MOWERS, TRAILERS, VEHICLES, UTV'S, NEW FENCING, LIVESTOCK EQUIPMENT, TECHNOLOGY, EQUIPMENT & MORE!**

**ATTENTION CONSIGNORS - CONSIGNMENTS WILL BE ACCEPTED ON:**  
Monday, November 30th - Friday, December 4th (8AM - 5PM)  
Monday, December 7th - Wednesday, December 9th (8AM - 5PM)  
Items must be on lot by Wednesday, December 9th (Week before auction)

Complete Lot Listings & Photos at  
**SteffesGroup.com**

Steffes Group, Inc., 2245 E Bluegrass Road, Mt. Pleasant, IA 52641 | 319.385.2000



# Auto Sale



## Auction

"We Sell it the Day You Need it Sold!"

Find us on  Facebook

[www.facebook.com/daughertyauction/](http://www.facebook.com/daughertyauction/)

**Saturday, December 19th, 2020**  
**11:00 am**  
**4101 SE Capitol Circle • Grimes, IA**

Viewing of listed vehicles will be available  
**December 18th from Noon-5 p.m., or one hour before sale time.**  
 Please contact Rick's Towing directly for  
 further information about any of the listed vehicles.  
 Some vehicles may be claimed before the sale date.  
 Additional vehicles may be available at time of sale

<p><b>Road Certified Vehicles</b></p> <p>2013 Honda Fit                  2008 Dodge Avenger                  2002 Chevy 1500                  1993 Chevy 3500                  2005 Mitsubishi Galant                  2007 Nissan Altima-blue                  2009 Chevy Malibu                  2007 Nissan Altima-white                  2005 Jeep Cherokee                  2004 Jeep Cherokee                  2004 Jeep Liberty</p> <p><b>Junk Certified Vehicles</b>                  - Not Road Legal                  2011 Nissan Altima                  1995 Chevy 1500                  2014 Hyundai Accent</p>	<p>1988 Chevy Silverado                  2011 GMC Terrain                  1998 Ford Ranger                  1999 Ford Ranger                  2005 Dodge Caravan                  1996 Ford F250                  2001 Toyota Camry                  2002 Chevy Astro                  1994 Kawasaki ZX-6R                  2014 Chevy Impala                  2009 Chevy Traverse</p> <p>2003 Cadillac Deville                  2003 Chevy Trailblazer                  2001 Mitsubishi Galant                  2008 Chrysler Aspen</p>
--	---

**Rick's Towing 515-276-1848**  
**Daugherty Auction & Real Estate Services, LLC.**  
 Chad Daugherty ~ Owner/Auctioneer • Kelly Daugherty ~ Auctioneer  
 416 Greene St. Adel, IA (515) 993-4159 ~ [d\\_auction@hotmail.com](mailto:d_auction@hotmail.com)  
 See Us on the Web at [www.daughertyauction.com](http://www.daughertyauction.com) or "Like" us on Facebook

The information in this brochure is from sources deemed to be reliable but it cannot be guaranteed by Daugherty Auction and Real Estate Services, LLC.



**\$24,500**

**2010 Brent 880**  
 20" Corner Auger,  
 Scales, Tarp, Light Pkg.,  
 One Owner, Always  
 Shedded, 800 65R32, Hyd.  
 Adjust Spout, Very Nice,  
 Call For More Pics  
**660-748-8400**



**Big Twins Starting at \$4,495**

**C&C Cycle**  
**Chariton, IA • 888-475-2243**  
**www.cc-cycle.com**



**WANTED**

**Loader Tractor**  
 Any Make or Model Considered  
**913-231-7015**

**FOR SALE:** John Deere 4240 Tractor, 1982, CAH, QR, 9926 Hrs, One Owner, Ft Fenders, Extra Lights/Mirror, 95% Firestone Factory Duals, Really Sharp, \$26,500. Call. 573-881-3557 12-4

**WANTED:** Small Donkey, No Biting, No Kicking, She Will Have A Good Home. 641-347-5103 12-4

**AUTOMOTIVE**

**FOR SALE:** 2004 Ford F350, Crew Cab, Lariat, 4x4, 6.0 Powerstroke, 133K Miles, New Tires And Injectors, No Rust, Very Good Condition, Asking \$12,500 OBO; 2015 Max 1 Big Bale Hauler With Lights, Good Condition, \$650 OBO. 641-799-3879 12-15

**CATTLE FOR SALE:** 40 Blk & Blwf 2nd & 3rd Period; 35 Blk Calving Now; 20 Red Angus Cross Cows 2nd & 3rd Period; Also Black & Red Bulls. 660-838-6247 Or 660-537-6247 12-18

**MISC**

**LARGE ESTATE TAG SALE:** December 10th And 11th From 3-6 PM, December 12th, 8-12 (Most Items 1/2 Price). 3 Households Of Items In A Large Heated Building. Something For Everyone. 11415 Hwy F62 Sully, Iowa 12-11

**ATTN TRUCK OWNERS:** Rhino Linings Offers You The Worlds Number One Sprayed In Truck Bedliner. Also Works On Livestock Tanks, Creep Feeders, Horse Trailers, Etc. Call For An Appointment & More Info. 641-799-5672 TFN

**FIREWOOD FOR SALE:** \$50 Per Load, Call Brent. 641-814-2562 12-11

**LIVESTOCK**

**LOOKING TO BUY:** Horses, Tack, Saddles, Horse Trailers, Etc. Cash In Hand, Call Wyatt. 618-535-9966 1-1

**FOR SALE:** Portable Building (New) 4 Ft. X 4 Ft., One Window, Walk In Door, And Small Animal Door, \$200. Will Text Photo. 641-895-7982 12-4

**BULLS FOR LEASE:** Over 70 Registered Angus & Hereford To Choose From. 90 Day Lease \$900. Trucking Available At Extra Charge. Kingdom City, MO. 573-999-3197 TFN

**FOR SALE:** New - Redwing Camo Hunting Boots, Insulated, Waterproof, Size 8D. Used - Camo Hunting Boots 8D. Used - Dress Boots, 7 1/2. 319-647-3328 12-4



**2003 Ram 3500**  
 Brand New Heavy Duty GEOREND Transmission, Brand New Banks Inter-cooler, Brand New Radiator, New 150 Horse Injectors, Twin Turbos  
**319-541-0313**



**2016 Honda Pioneer 1000EPS**  
 Excellent Shape,  
 425 Hrs,  
 3,300 Miles,  
 Loaded w/Options!  
**\$15,500**  
 Have More Pics  
 That I Can Send.  
 Call or Text  
**641-660-0765**

Farm Retirement

# AUCTION

**TIMED-ONLINE**

**CLOSES: TUESDAY, DECEMBER 15, 2020 AT 1PM**

Equipment located at 3639 127th Street, Brighton, IA

**TRACTORS, COMBINE, HEADS, DOZER, DRILL, PLANTER, TILLAGE, WAGONS, AUGERS, MOWERS, EQUIPMENT, PICKUP & TRAILER & MORE!**





**Gevock Farms, Inc. | Bill Gevock - 641.919.4046**  
 Contact Steffes Group at 319.385.2000;  
 Nate Larson, 319.931.3944  
 or Jerry Roth, 319.750.3269

**SteffesGroup.com** 

Steffes Group, Inc., 2245 E Bluegrass Road, Mt. Pleasant, IA 52641 | 319.385.2000

# UPCOMING ONLINE ONLY AUCTIONS

**Friday, December 4th: Antiques, Pop-Culture & Military**  
 Bid at: [www.proxibid.com/andreas](http://www.proxibid.com/andreas)

Live preview available from 12:00pm - 4:00pm at the American Legion in Ankeny

Lots begin closing at 6:00pm - Local pick-up on Sat. Dec. 5th in Ankeny

**Tuesday, December 8th: Antiques & Collectibles**  
 Bid at: [www.andreasauctions.hibid.com](http://www.andreasauctions.hibid.com)

Lots begin closing at 6:00pm - Local pick-up on Wed. Dec. 9th in Ankeny

**Saturday, December 12th: Marshalltown Estate & former Antique Store Liquidation**  
 Bid at: [www.andreasauctions.hibid.com](http://www.andreasauctions.hibid.com)

Lots begin closing at 6:00pm - Local pick-up on Sun. Dec. 13th in Marshalltown


**ANDREAS & ASSOCIATES**

Auctioneering & Appraisal Services


**515-681-7735**

SEE WEBSITE FOR PHOTOS, TERMS & DETAILS.  
[www.andreasauctions.com](http://www.andreasauctions.com)

# Post Frame Buildings



- Shop Houses
- Metal Roofing
- Free Estimates



**641-203-6663**

Quality to Last a Lifetime

# Public Land Auction

## Griffin Family Farms

1702 332<sup>nd</sup> Ave., Woodburn, IA 50275

Monday, December 14, 2020 10:00AM

Driving directions to the land: 9 miles east of Osceola Iowa on US 34 to the Woodburn, Iowa exit, then north 2 miles on 320<sup>th</sup> ave. to Kendall St., then 3/4 mile east.

The auction will be conducted in the media center at the Revelton Distilling Company  
1400 W. Clay St., Osceola, Iowa (Casino exit off of I-34, then east on Clay St.)

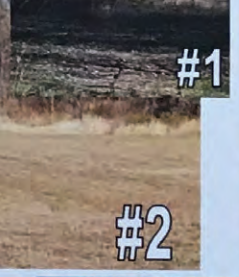
Mason McCoy, attorney at law, seller's attorney.

All checks to be written to the Reynoldson - Van Werden Trust account,  
Osceola, Iowa 50213

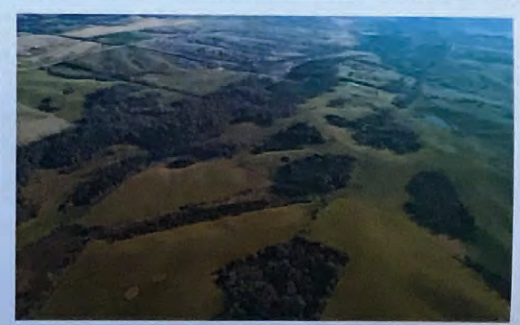
More Pictures Online!

**Tract #1:** 79 acres m/l of spectacular recreational ground with bottom tillable NHEL ground and open grass land. Large oak trees dominate the heavy timber areas as well as walnut and hickory. Signs of deer, turkey & pheasant abound. There are 2 large wire ear corn cribs in excellent condition as well as 2 conventional grain storage bins and a well with a windmill tower. This tract is located in Jackson Township sections 1&2. Taxes of \$1,092 are paid in full until September 2021.

**Tract #2:** 159 acres m/l of mostly open grasslands interlaced with timbered draws and a tillable 10 acre NHEL bottom field. This tract is located in Jackson Township sections 1&12. Taxes are \$3,552 per year and are paid in full until September 2021 (this tax amount reflects the taxes on 2 houses that have been demolished and have not yet been removed from the tax rolls.)



**Terms:** on both tracts: 10% down the day of the auction. Balance and possession at closing with a 5% buyer premium added to the hammer price. Exclusive hunting rights will go with the property at the conclusion of the auction. Buyers are responsible for their own inspection and due diligence on the property. No liabilities are assumed by sellers or the auction company. Property to be sold as is where is with no warranties expressed or implied. The property will not be sold contingent on the buyer obtaining financing. All financial arrangements must be made prior to the auction. Not responsible for accident or inadvertent errors in advertising. Closing expected in 30-45 days. Announcements made sale day take precedence over any and all printed materials.




2009 Ultra Classic  
Tour Pak Rack,  
Windshield Bag,  
48K Miles

**NO DOC FEES!** **\$7,995**

C&C Cycle  
Chariton, IA • 888-475-2243  
www.cc-cycle.com

Taking Orders NOW  
for **CRP SEED MIXES!**

CALL  
641-766-6790  
641-340-0294



JOHN@PRAIRIESEEDFARMS.COM

**\$32,500**



2014 John Deere 640FD  
Dual Knife Drive,  
Hyd. Fore & Aft, Stubble Lights,  
Belts Are Excellent, New Sickles,  
This HDR Is Field Ready, Always  
Shedded, More Pics Available

660-748-8400

Post & Pole Frame Buildings



Specializing in:  
Post Frame Buildings  
(Up to 100' Wide Clear Span)  
Agricultural • Commercial  
Residential • Equine  
Heat Formed Metal Roofing & Siding  
**With 50 Year Warranty**

Quality Workmanship  
Best Quality Material



Everlast Roofing, Inc.  
2 Miles N. of Drakesville on pavement  
888-371-4710 • 641-722-3505  
17549 Husky Trail Drakesville, IA 52552



2016 Polaris  
General 1000  
Full Cab, Tip Out  
Glass Windows,  
Heater, Winch,  
LED Lights, 4x4

**NO DOC FEES!** **\$14,995**

C&C Cycle  
Chariton, IA • 888-475-2243  
www.cc-cycle.com

Wagner-DentAuctions.com

1026 40<sup>th</sup> Street, Humeston, IA 50123  
Don Wagner 641-931-6832 wagnerdonald44@gmail.com  
Jason Dent 515-231-5176 imaginerodeo@gmail.com

Find us on  "Wagner-Dent Auctions"

Multi-Party Farm Equipment  
**AUCTION**  
 TIMED ONLINE



**CLOSES: FRIDAY, DECEMBER 18, 2020 AT 10AM**

**Auctioneer's Note:** Steffes Group is proud to offer this Timed Online Multi-Party Auction featuring the farm retirements of John Murphy and Ron Madsen. John and Ron have both farmed in their respected communities all their lives. Feel free to call the owners to ask questions or to setup a time to preview the equipment. Sales tax applies, exemption forms available.

**TRACTORS, COMBINES, HEADS, PLANTERS, RIPPER, RAKE, BALER, GRAIN CART & WAGONS, AUGER, TRUCKS, TECHNOLOGY & MORE!**



Contact Steffes Group at 319.385.2000;  
 Russ Lamp, 319.212.0774 or Duane Norton, 515.450.7778

**SteffesGroup.com** 

Steffes Group, Inc., 2245 E Bluegrass Road, Mt. Pleasant, IA 52641 | 319.385.2000

Tri-Annual **Consignment** **NO RESERVE**  
**AUCTION**  
**FRIDAY, DECEMBER 11, 2020 • 9:00 A.M.**  
**CONSIGNMENTS ACCEPTED UNTIL TUESDAY, DECEMBER 8 AT 5:00 P.M.**

**Ed's Machinery LLC**  
 quality machinery since 1997

(660) 883-5501 • Fax (660) 883-5702  
 17920 Hwy 136 • Memphis, MO  
 1 Mile West of Memphis on Hwy 136  
[www.edsmachinery.com](http://www.edsmachinery.com)

COMPETITIVE RATES | NATIONWIDE PUBLICITY  
 ONLINE BIDDING AVAILABLE  
 HUNDREDS OF BUYERS IN ATTENDANCE



**AUCTION HELD LIVE ON-SITE**

**BUYING:** Gold, Silver, Bullion Scrap Jewelry, Pocket Watches, Rare And Uncirculated Coins, Foreign Coins, Currency U.S. And Foreign, Gold Accepting Auction Material.  
**McKee Coins**  
 213 East Main St.  
 Ottumwa, Iowa. 52501  
 641-684-6006 12-4

**SCOTT HUSKEY'S HOME SERVICE!!:** Insulated Skirting for Manufactured or Older Site Built Homes. Eliminates Frozen Water Lines & Cold Floors. Save 20 to 25% on Utility Costs. I Also Have an Uninsulated Heavy Duty Vinyl Skirting-Looks Great! Since 1972  
 573-696-3468 TFN

**LOOKING TO LIQUIDATE OR DID YOU JUST INHERIT STUFF:** Let Me Help. On-Site Tag Sale Services. Personal Property And Collectible Consultation. Also Seeking Baseball Cards, Furniture, Comic Books, The Unusual, And Anything Of Value. Before Throwing Out Your Potentially Valuable Items, Contact Me. CAGA Certified. Nathan Lilley. 573-253-4159 TFN



**2014 Honda Interstate 1300**  
 Bags, Backrest, Sissy Bar, Floor Boards, Windshield, Only 6K Miles

**NO DOC FEES!** **\$5,395**

**C&C Cycle**  
 Chariton, IA • 888-475-2243  
[www.cc-cycle.com](http://www.cc-cycle.com)

**POST FRAME BUILDINGS**

- Best Quality
- Great Prices
- Great Service



[www.lancasterlumber.com](http://www.lancasterlumber.com)  
**LANCASTER LUMBER, INC**  
 800-424-5071 • LANCASTER, MO

**BUYERS & SELLERS WANTED**

**NEXT AUCTION | SAT., DECEMBER 19<sup>TH</sup>**



**B&S EQUIPMENT AUCTION** **CALL TODAY!**

*join us on facebook!* 

**2020 CONSIGNMENT AUCTION**

Shay Esbeck 660-605-0839 | Barney Esbeck 660-605-0841 | Justin Harlow 660-605-2346

**HAULING AVAILABLE • LIVE & ONLINE BIDDING • NATIONWIDE ADVERTISING • CONSIGN NOW!**  
[BandSequipmentsales.com](http://BandSequipmentsales.com) **GALLATIN | MISSOURI**

**BUY | SELL | TRADE | EVERY DAY**

*Virtual Online Only Auction!*  
**Fayette County, Iowa**  
**Land Auction**  
**MONDAY, DECEMBER 7<sup>TH</sup> AT 10:00 A.M.**

**190 ACRES± (SUBJECT TO SURVEY) • 3 TRACTS**

**Reminder!**



The Kaufman – Youngblut farm is located in Sections 16 & 17, Jefferson Township, Fayette County, IA. (1 mile north of Oelwein, IA)  
 Make plans now for this upcoming Fayette County, Iowa land auction. Tract 1 represents productive tillable farmland that is partially pattern tiled. Tract 2 offers a potential home building site, tillable farmland, recreational acreage. Tract 3 features a very attractive new home building site that is located 1/4 mile off of State Hwy 150, just north of Oelwein, IA. We urge you to take a look at this well maintained farm that has tons of possibilities!

**Kevin Kaufman & Denise Youngblut – Sellers**  
**Representing Attorney:** Brian Eddy • Roberts & Eddy, P.C.  
 2349 Jamestown Ave. #4, Independence, IA • Ph: (319) 334-3704  
**Auction Manager:** Jim Huff (319) 931-9292

**SULLIVAN AUCTIONEERS, LLC • TF (844) 847-2161**  
[www.SullivanAuctioneers.com](http://www.SullivanAuctioneers.com) • IL Lic. #444000107



**2019 Ford Edge SEL**  
AWD, Burgundy Velvet Metallic, Heated Leather, Navigation, Remote Start, 29K Miles  
**\$27,900**



**2018 Ford Fusion SE**  
Lightning blue, Heated Leather, Remote Start, Great Fuel Economy, 20K Miles  
**\$18,900**



**2017 Ford F150**  
S/Cab, 4x4, Chrome Package, Heated Seats, Navigation, Remote Start, 35K Miles  
**\$31,900**



**2017 Nissan Quest SV**  
2nd Row Buckets, Rear DVD, Power Side Door, Power Rear Hatch, 82K Miles  
**\$12,900**



**2014 GMC Acadia SLT**  
AWD, Fully Equipped, Heated Leather, Power Sunroof, Remote Start, 3rd Row Seat, 90K Miles  
**\$17,500**



**2011 Chevy Traverse LT**  
AWD, Full Power, 2nd Row Buckets, Local Trade, 117K Miles  
**\$7,900**

## CHARITON FORD

Call Karl Stone • Mike Scieszinski  
Toll Free: 1-866-283-8731 • CELL: 641-774-6735  
Chariton, Iowa • www.charitonford.com



2016 Street Glide  
Salvage Title, Runs Good!  
Lots Of Extras

**NO DOC FEES!** **\$10,995**

C&C Cycle  
Chariton, IA • 888-475-2243  
www.cc-cycle.com

FREE HEAT & HOT WATER: Eliminate Monthly Heating Bills w/Classic Outdoor Wood Furnace. No Sunday Calls.  
660-707-3866 TFN

### PETS

FOR SALE: 2 Male Rat Terriers, 10 Weeks Old, Tri-Colored, \$150 Each.  
641-895-4995 12-4

PUPPIES, PUPPIES: We Want to Buy Your Puppies! Registered or Mixed Breeds. We Have Homes Waiting for Them!  
573-784-9866 TFN

BUY SELL OR CONSIGN: To Auction Indian Artifacts Rare Coins, Pocket Watches, Diamond Jewelry.  
McKee Coins  
213 East Main  
Ottumwa, IA 52501  
641-684-6006 12-11

FOR SALE: Portable Building (New) 4 Ft. X 4 Ft., One Window, Walk In Door, And Small Animal Door, \$200. Will Text Photo.  
641-895-7982 12-4



## THIS WEEK'S SPECIAL



**2007 Case IH DX35 Tractor & Loader**  
Hydrostat Transmission, PTO, Local One Owner Trade  
**\$17,950**

**Vetter Equipment Company**  
2503 Hwy 2 • Corydon, IA • 641-872-2000  
For All Your Equipment Needs • www.Vetterequip.com

CNH Capital

©2007 CNH America LLC. All rights reserved. Case IH is a registered trademark of CNH America LLC.  
CNH Capital is a trademark of CNH America LLC.  
www.caseih.com



TIMED ONLINE

## Arnold Companies, Inc.

See complete terms, lot listings & photos at SteffesGroup.com

OPENS: Tues. December 1

CLOSES: Thurs. December 10 | 10AM<sup>2020</sup>



Equipment located at 2 Arnold Companies locations:

2995 Quail Rd NE, St. Cloud, MN 56379 / 110 North Star Rd, Alden, MN 56009

PREVIEW: Monday - Friday from 9AM-3PM. LOADOUT: December 11, 14,15, 9AM to 3PM. Loading will be available until January 8, 2021 Monday - Friday from 9:00 AM-3:00 PM. Shop rate loading after January 8, 2021. All items must be removed by January 31, 2021 or storage fees will apply.

AUCTIONEER'S NOTE: Over 150 lots of farm and construction equipment. CNH Capital financing available on select equipment. Buyers must be pre-qualified. 20% down payment required. Please contact Auction Finance Department at 320.398.3810 for information and terms.



**OVER 150 LOTS!**

Track Tractors  
4WD Tractors  
MFWD Tractors  
2WD Tractors  
Combines  
Flex Heads

Corn Heads  
Planters  
Disc Rippers  
Plows & Chisel Plows Discs  
Field Cultivators  
Self-Propelled

Forage Harvesters  
Forage Harvester Heads  
Stalk Chopper  
Lawn & Garden  
Skid Steer Loaders  
Balers  
Mergers & Discbines  
Sprayers  
Manure Spreaders

## ARNOLD'S

For equipment questions contact...  
St. Cloud, MN: Sean Arnold, 320.251.2585  
or Eric Gabrielson of Steffes Group,  
320.693.9371 or 701.238.2570



Steffes Group, Inc., 24400 MN Hwy 22 S, Litchfield, MN 55355  
Eric Gabrielson MN47-006 | 320.693.9371 | SteffesGroup.com

# Huge Multi-Party Farm Equipment AUCTION

TIMED ONLINE

Cartersville Elevator lot, 1603 S Eisenhower Avenue, Mason City, Iowa

CLOSES: THURSDAY, DECEMBER 10, 2020 AT 10AM

Inspection Day: Wednesday, December 9th from 9AM-3PM.

Loadout: Friday, December 11th from 9AM-4PM, or by appointment.

QUAD TRAC, TRACTORS, COMBINES, HEADS & HEAD TRAILERS, SEED TENDERS, SPRAYERS, PLANTERS, TILLAGE, SEMI & SERVICE TRUCKS, HOPPER BOTTOMS & TRAILERS, LIVESTOCK EQUIPMENT, GRAIN CARTS & WAGONS, AUGERS, SKID LOADERS, EQUIPMENT, UTV'S, TECHNOLOGY & MUCH MORE!



Contact Steffes Group, 641.423.1947;

Nate Larson, 319.931.3944 or Duane Norton, 515.450.7778

See the full list of consignors, descriptions & photos online at

**SteffesGroup.com**



Steffes Group, Inc., 2245 East Bluegrass Road, Mt. Pleasant, IA 52641 | 319.385.2000

# JAMESPORT BUILDERS

## 660-684-6931

### POST FRAME BUILDINGS



**Free Estimates**

**Machine Sheds • Horse Barns • Garages**  
**WE ALSO DO METAL ROOFS, SPRAY FOAM INSULATION (OPEN & CLOSED CELL) & CELLULOSE INSULATION**  
 We Have: House Plans, Dirt Work & Concrete Available  
**Hours: Mon-Fri 8 AM - 5 PM • Sat By Appointment Only**  
**32137 State Hwy 6 • Jamesport, MO 64648**  
**"Serving Southern Iowa"**



### DREAM HOUSE

**ONLINE:**  
[www.chateauhomes.net](http://www.chateauhomes.net)  
**CALL MARLA**  
**573-657-7040**

### REAL ESTATE

**LINCOLN HOMES SPRING SALE!** Quality Built Modular & Manufactured Home On Display. Factory Direct Prices With Free Set Up & Installation Within 100 Miles.  
 Lincoln Homes  
 Hwy 30  
 Ogden, IA 50212  
[lincolnhomesia.com](http://lincolnhomesia.com)  
 515-275-2717 TFN

### RECREATIONAL

**FOR SALE:** 2017 Ranger XP 90 EPS Sage Green, 400 Hrs., 4500lb Wench, Flip Down Windshield, Rear Panel & Poly Sport Roof, \$9,500 OBO.  
 641-622-2010 12-18

### AG RELATED

**FOR SALE:** (2) John Deere 4020 D Tractor, 1970, One Owner, Good Sheet Metal, Poor Paint, 10,000 Hrs Or John Deere 4020 D Tractor, 1968, 6000 Hrs, With Great Bend QT Loader, \$12,500 Choice. Call.  
 573-881-3557 12-4

**FOR SALE:** New 3 Pt. Tillers, Heavy Duty, Gear Driven, 7 Ft to 10 Ft, Starting at \$2,650.  
 660-874-4455 1-28-21

LOCATION: 4098 AUSTIN ROAD  
OWATONNA, MN 55060

# AUCTION

OPENS: FRIDAY, DECEMBER 11

## CLOSES: FRIDAY, DECEMBER 18 | 1PM



**JOHN DEERE S660 COMBINE**



**JOHN DEERE 8295R**



**JOHN DEERE 1770NT**

**ALSO TO INCLUDE:**

- 2012 John Deere 9560RT, 2258 hrs
- 2010 Brent 782 Grain Cart, 18"
- 2013 John Deere 608C
- 2018 John Deere 635F
- Horst CHCF 4-wheel Header trailer, 36'
- Unverferth HT-25 4-wheel Header trailer, 25'
- John Deere 2630 controller
- Starfire 3000 globe
- International 490 Disc Ripper, 18"
- 2016 John Deere 2730 Disc Cultivator, 45 1/2'



**BRENT 782 GRAIN CART**

**AND MORE! For a full list of items visit**  
[www.SteffesGroup.com](http://www.SteffesGroup.com)

## SteffesGroup.com

Steffes Group, Inc., 24400 MN Hwy 22 S, Litchfield, MN 55355 | 320.693.9371

**TERRY AND TAMMY EBELING RETIREMENT AUCTION**  
**TERRY EBELING, 507.456.5268**  
 or Brock Skov at Steffes Group, 320.693.9371 or 507.272.4818  
 Complete terms, lot listings and photos at [SteffesGroup.com](http://SteffesGroup.com) / Ashley Huhn MN47-002





# Online Auction



*"We sell it the day you need it sold!"*

**Commercial Kitchen Items, Office Equipment & Much More!**  
 See all photos and descriptions on HiBid!  
 Visit [daughertyauction.hibid.com](http://daughertyauction.hibid.com) to bid online!  
 Bidding ends- Dec. 5th at 4:00 pm CST  
 Pick up items- Dec. 6th & 7th, 9am-Noon in Adel, Iowa



**Daugherty Auction and Real Estate Services, LLC.**  
 Chad Daugherty ~ Owner/Auctioneer ~ Kelly Daugherty ~ Auctioneer  
 Adel, Iowa (515) 993-4159 ~ [dauction@hotmail.com](mailto:dauction@hotmail.com)  
 See us on the web at [www.daughertyauction.com](http://www.daughertyauction.com) or "Like" us on Facebook  
The information in this brochure are from sources deemed to be reliable but it cannot be guaranteed by Daugherty Auction and Real Estate Services, LLC.

**FOR SALE:** 8N Ford Runs Nice, New Rear Tires And Rims, Very Straight Tin, Live Hydraulic Loader With Snow Bucket, \$2,850; 25 Older Tractors, 20 Loaders, 15 Blades 2 Or 3 Pt., 6 Ft., 7 Ft., 8 Ft., 9 Ft., 3 Pt. Snow Blowers 7 Ft. 8 Ft.; 3 Pt. GNUSE Hyd. Buckets, 6 Ft., 7 Ft., And 9 Ft., Pomeroy, IA.  
 712-299-6608 12-18

**FOR SALE:** John Deere 7630 Tractor, MFWD, 7000 Hrs, 746 Loader, Bucket, Spear, Power Quad, \$59,500. Call.  
 573-881-3557 12-4

**FOR SALE:** Cattleman's New Heavy Iron Corral Panels, \$60. We Also Have Accessories! Free Replacement If Anything Gets Damaged.  
 816-507-3116 Or 816-898-0234 12-25



# BELGARDE EQUIPMENT AUCTION

LIVE & ONLINE AUCTION - 3032 CLARK TOWER RD. WINTERSET, IA 50273



**LIVE AND ONLINE BIDDING BEGINS AT 10AM**



**JOHN DEERE 7720 COMBINE**



**BRENT 540 WAGON**



**JOHN DEERE 7000 PLANTER**



**SPRAY-LAND SPRAYER**



**JOHN DEERE 590 D EXCAVATOR**



**BRILLION SMALL SEED DRILL SSI0**

**TONS MORE ITEMS!**  
 Cattle Equipment - Tillage - Bale Spears - Wagons - Sprayers - Manure Spreader - Rakes/Harrows - Trailers & MORE!



**TOM BRADLEY, CAI**  
 Auctioneer  
 (515) 202-7687  
[Tom@DreamDirt.com](mailto:Tom@DreamDirt.com)



**BID ONLINE**  
**DreamDirt.com**

# MULTI-TRACT Land Auction

POWESHIEK COUNTY, IA **TIMED ONLINE**

## 200± ACRES - 3 TRACTS

Land is generally located 3 ¼ miles south of Deep River on Highway 21, then 2 miles west on 530th Avenue.

**CLOSES: MONDAY, DECEMBER 14, 2020 AT 1PM**

**TRACT 1 - 120 ACRES M/L**

FSA indicates: 113.31 HEL acres tillable. CSR 2 is 79.4 on the tillable acres. This farm has a windmill lease agreement. Available to view online.

Buildings include: 60'x52' barn, 30'x60' machine shed, 26'x40' garage. Bins include: (1) 4,500 approx. bu. bin. and (3) 3,400 approx. bu. Located in Section 30 of Deep River Township, Poweshiek County, IA.

**TRACT 2 - 40 ACRES M/L**

FSA indicates: 38.7 HEL acres tillable. Combination farm with 20.56 acres in row crop production and 18.14 acres being used for pasture. CSR 2 is 77.9 on the acres in row crop production. There is an older building on this tract. Located in Section 29 of Deep River Township, Poweshiek County, IA.

**TRACT 3 - 40 ACRES M/L**

FSA indicates: 33.64 HEL acres tillable. CSR 2 is 62.5 on the tillable acres. Located in Section 32 of Deep River Township, Poweshiek County, IA.

Sarvis Farm | Darleen Sarvis and Bradley L. Rodriguez

Brian J. Kane - Attorney for Sellers

Contact Nate Larson at Steffes Group, 319.385.2000 or 319.931.3944

**SteffesGroup.com**



Steffes Group, Inc., 2245 East Bluegrass Road, Mt. Pleasant, IA 52641 | 319.385.2000



**MOTOR INN**  
KNOXVILLE • IA

**RAM**  
**CHRYSLER**  
**GMC Jeep**  
Sales • Service • Parts • Body Shop  
1705 N Lincoln • 1-800-933-8673  
www.MotorInnAutoGroup.com

**KT1123**  
  
**\$38,995**

**KT1126** **Just In!**  
  
**\$50,995**

**KT1122** **Just In!**  
  
**\$12,995**

**2015 Jeep Wrangler**  
4x4, Rubicon, Removable Top, Leather, Loaded, 26K Miles

**2016 Chevy Silverado**  
Crew Cab, 4x4, LTZ, 6.6L Diesel, Z71, Leather, Loaded, 59K Miles, Super Clean!

**2014 Chevy Equinox LT**  
Leather, AWD, 97K Super Clean!

**KDT2410E** **Just In!**  
  
**\$13,500**

**KT1090A** **Just In!**  
  
**\$13,995**

**KT1094A** **Just In!**  
  
**\$25,995**

**2014 Ford Fusion SE**  
45K, Sunroof, Super Nice!

**2010 Toyota Tacoma**  
4x4, Ext, Clean!

**2010 Ford F350 1 Ton**  
Crew Cab, 4x4, Lariat, 6.9L Diesel, 135K, Super Clean!

**KT1062B**  
  
**Was \$10,500**  
**Now \$9,500**

**KDT277A**  
  
**\$55,995**

**KDT2288A**  
  
**Was \$6,995**  
**Now \$5,995**

**2011 Chevrolet Equinox LT**  
AWD, 93K, Sharp!

**2017 Ford F350 1 Ton**  
Crew Cab, Lariat, 4x4, 6.7 Diesel, 90K, Leather, Loaded

**2005 GMC Yukon Denali XL**  
4x4, 209K, Runs Great, Excellent Tow Vehicle!

We Have Domestic Or Import Cars, Trucks, SUVs And Minivans. Let Us Know What You're Looking For And We'll Go To Work For You! We Have 5 Dealerships Of Inventory To Choose From.



- Specializing In Pole Shed Packages
  - New Houses & Garages
  - Re-roofing w/ Metal Or Shingles
- Quality Comes First & Very Competitive!**



**641-898-2226**

**SCHWARTZ CONSTRUCTION**

**FOR SALE:** John Deere 4230 Tractor, 9000 Hrs, Iowa Tractor, Turbo, Clean Inside/Out, Loader Available, \$18,950. Call. 573-881-3557 12-4

**FOR SALE:** 24 Ft x 5 Ft Free-Standing Cattle Panels, Weighing 600 Lbs Each, Fastener Chains Included. Located in Troy, IA. 641-680-0892 TFN

**FOR SALE:** John Deere 4455 Tractor, MFWD, Power Shift, New Rubber, 7800 Hrs, Factory Duals, 2 Owners, Good As It Looks, \$43,500. Call. 573-881-3557 12-4

**FOR SALE:** John Deere 855 Compact Tractor With Loader And 72 Inch Mower Deck, Hydro, 3 Pt., New Tires, Very Good Condition, \$7,950. 641-572-0061 12-4

**FOR SALE:** John Deere 2940 Tractor, CAH, Hilo, Estate Tractor, 5300 Hrs, Set For Many Years, Shifting Cables Stiff, New Rubber, \$13,500. Call. 573-881-3557 12-4

**The Hawkeye Trader Office Will Be Closed Monday, Dec. 21st Through Friday, Dec. 25th For the Christmas Holiday.**

**There Will Be No Paper Distributed on Dec. 25th.**

**MERRY CHRISTMAS & HAPPY NEW YEAR!**

**FOR SALE:** John Deere 6130 R Tractor, MFWD, Cab, Power Quad, 2600 Hrs, Left Had Reverser, Joystick, Triple Hy, All Bells And Whistles, With 641 R Self Leveling Loader, \$77,500. Call. 573-881-3557 12-4

**FOR SALE:** John Deere 4240 Tractor, 1982, CAH, QR, 9926 Hrs, One Owner, Ft Fenders, Extra Lights/Mirror, 95% Firestone Factory Duals, Really Sharp, \$26,500. Call. 573-881-3557 12-4

**AUTOMOTIVE**  
**WANTED:** Good 327 Or 350 Chevy Engine, Complete With 350 Transmission. Milo, IA. 515-669-3838 12-11

**"One Man's Junk Is Another Man's Treasure!" Sell It in the Hawkeye!**

Farm Retirement

# AUCTION

**TIMED ONLINE**

**CLOSES: FRIDAY, DECEMBER 11, 2020 AT 1PM**

Equipment located at 748 175th Street, Mechanicsville, IA  
**TRACK & 4WD TRACTOR, COMBINE, FLEX & CORN HEAD, HEAD TRAILERS, PLANTER, FIELD CULTIVATOR, SEED TENDER, HOPPER BOTTOM TRAILER, GRAIN CART, FUEL TRAILER, ROTARY CUTTER, TECHNOLOGY & MORE!**



Michael Herring & Brenda Emick-Herring - 563.357.2668

Contact Terry Hoenig of Steffes Group, 319.385.2000 or 319.470.7120

**SteffesGroup.com**



Steffes Group, Inc., 2245 East Bluegrass Road, Mt. Pleasant, IA 52641 | 319.385.2000

# ZIMMERMAN'S STORE

Main Street • Rutledge, MO • 660-883-5766

## Water Song Locally Grown Lettuce In Stock Again

3 lbs. Jonathan Apples .....\$2.15      88 Ct. Naval Oranges ..... \$21.75 A Box  
**More Oranges & Grapfruit Expected By End Of Week**  
 Wild Wonder Gourmet Tomatoes ..... 1.5 lbs. ... \$2.69      12 oz .....\$1.59  
 Pink Lady Apples ..... 85¢/lb      10 lb Red Potatoes ..... \$5.15

Kraft Caramels, 12 oz.....\$1.15  
 Cheap-N-Sweet Honey, 1 Gallon .....\$28.25  
 Mayonnaise Xtra Heavy, 1 Gallon .....\$5.59

Malt O Meal Honey Buzzers, 33 oz.....\$5.49  
 Organic Puffed Rice, 6 oz.....\$1.75  
 Organic Puffed Kamut, 6 oz.....\$1.75  
 Almond Butter, Roasted & Unsweetened, 16 oz .....\$8.79  
 Chocolove Assorted Dark Chocolate Bars, 3.2 oz.....\$2.49

40" x 100 Ft. Table Cover, Plastic, Assorted Colors .....\$13.69  
 40" x 300 Ft. White Plastic Table Cover .....\$21.65  
 Foam Plates 8 7/8", 3 Compartment, 125 Count.....\$5.79  
 Foam Tray 5 Compartment, 125 Count.....\$7.45  
 9 Fl. Oz Clear Drink Cups, 50 Ct.....\$2.85

Paper Cutter, 12" With 17" Swing Out Ruler .....\$9.95  
 13 pc Childs Porcelain Tea Set.....\$5.79  
 82 pc Art Set.....\$11.98

**FOR SALE:** 2004 Ford F350, Crew Cab, Lariat, 4x4, 6.0 Powerstroke, 133K Miles, New Tires And Injectors, No Rust, Very Good Condition, Asking \$12,500 OBO; 2015 Max 1 Big Bale Hauler With Lights, Good Condition, \$650 OBO.  
 641-799-3879      12-15

**ATTN TRUCK OWNERS:** Rhino Linings Offers You The Worlds Number One Sprayed In Truck Bedliner. Also Works On Livestock Tanks, Creep Feeders, Horse Trailers, Etc. Call For An Appointment & More Info.  
 641-799-5672      TFN

**LIVESTOCK**  
**CATTLE FOR SALE:** 40 Blk & Blwf 2nd & 3rd Period; 35 Blk Calving Now; 20 Red Angus Cross Cows 2nd & 3rd Period; Also Black & Red Bulls.  
 660-838-6247 Or 660-537-6247      12-18

**LOOKING TO BUY:** Horses, Tack, Saddles, Horse Trailers, Etc. Cash In Hand, Call Wyatt.  
 618-535-9966      1-1

**BULLS FOR LEASE:** Over 70 Registered Angus & Hereford To Choose From. 90 Day Lease \$900. Trucking Available At Extra Charge. Kingdom City, MO.  
 573-999-3197      TFN

**WANTED:** Small Donkey, No Biting, No Kicking, She Will Have A Good Home.  
 641-347-5103      12-4

**MISC**  
**FOR SALE:** New - Redwing Camo Hunting Boots, Insulated, Waterproof, Size 8D. Used - Camo Hunting Boots 8D. Used - Dress Boots, 7 1/2.  
 319-647-3328      12-4

**LARGE ESTATE TAG SALE:** December 10th And 11th From 3-6 PM, December 12th, 8-12 (Most Items 1/2 Price). 3 Households Of Items In A Large Heated Building. Something For Everyone.  
 11415 Hwy F62 Sully, Iowa      12-11

**FIREWOOD FOR SALE:** \$50 Per Load, Call Brent.  
 641-814-2562      12-11

# 30 USED BIG TWIN HARLEY'S \$4995-\$9995 ALL NICE BIKES!!!

**C&C Cycle**  
 Chariton, IA • 888-475-2243  
[www.cc-cycle.com](http://www.cc-cycle.com)

**FOR SALE:** Portable Building (New) 4 Ft. X 4 Ft., One Window, Walk In Door, And Small Animal Door, \$200. Will Text Photo.  
 641-895-7982      12-4

**BUYING:** Gold, Silver, Bullion Scrap Jewelry, Pocket Watches, Rare And Uncirculated Coins, Foreign Coins, Currency U.S. And Foreign, Gold Accepting Auction Material.  
 McKee Coins  
 213 East Main St. Ottumwa, Iowa. 52501  
 641-684-6006      12-4

**SCOTT HUSKEY'S HOME SERVICE!!:** Insulated Skirting for Manufactured or Older Site Built Homes. Eliminates Frozen Water Lines & Cold Floors. Save 20 to 25% on Utility Costs. I Also Have an Uninsulated Heavy Duty Vinyl Skirting-Looks Great! Since 1972  
 573-696-3468      TFN

**BUYER OF STANDING TIMBER:** Walnut & Soft Maple Are Our Specialty; Also Other Species. Bonded & in Business for 30 Years. We Pay Before Cutting. Gingerich Sawmill LLC, Bloomfield, IA.  
 641-722-3002      12-4

**LOOKING TO LIQUIDATE OR DID YOU JUST INHERIT STUFF:** Let Me Help. On-Site Tag Sale Services. Personal Property And Collectible Consultation. Also Seeking Baseball Cards, Furniture, Comic Books, The Unusual, And Anything Of Value. Before Throwing Out Your Potentially Valuable Items, Contact Me. CAGA Certified. Nathan Lilley.  
 573-253-4159      TFN

**FREE HEAT & HOT WATER:** Eliminate Monthly Heating Bills w/Classic Outdoor Wood Furnace. No Sunday Calls.  
 660-707-3866      TFN

# SAM'S AUTO SALES

## 319-204-5214

[www.samsautosalesia.com](http://www.samsautosalesia.com)

Please See Our Website for Our Repairable Vehicles!



**READY TO GO**

### 2018 GMC SIERRA 1500 SLT

4x4, 4 Dr Crew Cab, 5.8 Ft SB, Auto, 8 Spd 5.3L V8, 82,051 Miles

**\$34,950**



**READY TO GO**

**2011 JEEP GRAND CHEROKEE LIMITED**  
 4x4, 4 Dr SUV, Auto, 5 Spd, Gasoline, 5.7L V8, 185,348 Miles

**\$10,800**



**READY TO GO**

**2005 FORD F150 KLT**  
 4 Dr. Super Crew, 4WD, Styleside, 5.5 Ft SB, Auto, 4 Spd, 5.4L V8, 164,314 Miles

**\$5,800**



**READY TO GO**

**2014 JEEP GRAND CHEROKEE LIMITED**  
 4x4, 4 Dr SUV, Auto, 8 Spd, Gas, 3.6L V8, 84,200 Miles

**\$15,300**



**READY TO GO**

### 2017 HONDA RIDGELINE RTL

AWD, 4 Dr., Crew Cab, 5.3 Ft. SB, 3.5L V6, Gas, Auto, 6 Spd, 26,134 Miles

**\$26,800**



**READY TO GO**

### 2020 CHEVROLET MALIBU LT

4 Dr Sedan, FWD, 1.5L Turbocharger, Gas, 11,251 Miles, Clean Title

**\$20,600**



**READY TO GO**

**2008 JEEP LIBERTY LIMITED**  
 4x4, 4 Dr SUV, Auto, 4 Spd, 3.7L V6, Gas, 157,000 Miles

**\$6,500**



**READY TO GO**

**2015 CHEVROLET IMPALA LT**  
 4 Dr Sedan w/2LT, Auto, 6 Spd, Flex Fuel, 3.6L V6, 71,033 Miles

**\$12,200**



**READY TO GO**

**2017 HYUNDAI SONATA SPORT**  
 4 Dr Sedan, Auto, 6 Spd, Gas, FWD, 2.4L, 32,223 Miles

**\$11,800**



**READY TO GO**

**2014 DODGE RAM 1500 TRADESMAN**  
 4x4, 4 Dr Crew Cab, 5.5 Ft SB, Gas, 5.7L V8, 131,426 Miles

**\$19,800**



**READY TO GO**

**2018 TOYOTA HIGHLANDER SE**  
 AWD, 4 Dr SUV, Auto, 8 Spd, Gas, 3.5L V6, 80,893 Miles

**\$23,800**



**READY TO GO**

**2018 POLARIS GENERAL 1000**  
 with Ride Command  
 328.9 Miles

**\$15,500**



**READY TO GO**

### 2019 CHEVROLET COLORADO WORK TRUCK

4x4, 4 Dr Crew Cab, 5 Ft SB, Auto, 8 Sd, Gas, 3.6L V6, 22,141 Miles

**\$24,300**

**Mt. Pleasant, IA • 803 East Winfield Ave • NOT RESPONSIBLE FOR TYPOGRAPHICAL ERRORS**

## ANTIQUES & TOY TRACTOR AUCTION December 12th • 10:00 am

2705 MAIN ST • UNIONVILLE, MO

Toy tractors will sell at 12:00. Tractors in box IH 866, Ford 4600, 1590 grain drill, MF challenger, Case wagon w/driver & corn load, JD 60 Oliver 77, Farmall 340, Precision Oliver 77, Farmall 706, IH 756, Oliver 70, JD general purpose, Ford tractors of past, JD 4010, Farmall super M, JD model G, JD spreader, MH pony, JD model A, AC 7045, JD 70 row crop, JD 3010, JD M, Case VAC, McCormick WD9, McCormick 140, JD 2 cylinder 6, Farmall F20 toy farmer, MM G750 toy farmer, JD HWH, AC D17, toy farmer 4010 diesel, IH 300 IH 544, IH 450 LP IH 450 JD 12A Maytag trucks, Maytag washer, JD A hi crop, G hi crop, Precision Farmall regular. Toys not in box JD 7800 AC 7080, Oliver 77, many implements & flats full of re-builders, Case pedal tractor cart, tin trucks, Nylint & other trucks and machinery, Buddy L, fire engine, some older items, tractor books.

**Antiques:** Peace silver dollars, 78 records, several crocks & canning crocks, lots of glassware, wood stove, enamel cook stove, GM fridge, General Motors sign, Jack Daniels plaster statue, nail kegs, chrome table & chairs, floor sifter from cabinet, pitcher pump, license plates, figurines, hub caps, wire baskets, crosscut saw, picks, gunny sacks, comic books, marbles, baseball cards, oil bottles, pocket knives, marbles knife, tractor seat, churn tops, galvanized items, baskets, many items unlisted.

**Tools/Outdoor:** New nuts and bolts, coleman lantern, impact & sockets, wrenches, hand & power tools, many yard tools, plastic shelf, saddles, oil, 3/4 socket set, toolboxes, canner, traps, Poulan chainsaw, Husqvarna 445 chainsaw, torch gauges, wheel barrel, JD yard cart, Craftsman router planer, shop heater, binders, 10" saw, lawn spreader, bench grinder, organizers. **Household:** Sam Baere grinder w/lots accessories, canning jars, queen bed, exercise bike, crockpots, gardening items, ice cream maker, 20 gal fish tank, DVDs, Roomba, bb pistols, PS2, several boxes full of household items. Very large auction.



Indoor sit down style auction.  
Can see photos at Altiser Auction Facebook page.  
Statements made the day of sale take precedence over printed material. Food & restrooms available.



2018 Street  
Glide  
Custom Windshield,  
12" Bars, Hwy Pegs,  
Like New!  
Only 2,498 Miles

**NO DOC FEES!** **\$22,995**  
C&C Cycle  
Chariton, IA • 888-475-2243  
www.cc-cycle.com

BUY SELL OR CONSIGN:  
To Auction Indian Artifacts  
Rare Coins, Pocket  
Watches, Diamond Jewelry.

McKee Coins  
213 East Main  
Ottumwa, IA 52501  
641-684-6006 12-11



FOR SALE: Portable  
Building (New) 4 Ft. X 4 Ft.,  
One Window, Walk In Door,  
And Small Animal Door,  
\$200. Will Text Photo.  
641-895-7982 12-4

**PETS**  
FOR SALE: 2 Male Rat  
Terriers, 10 Weeks Old, Tri-  
Colored, \$150 Each.  
641-895-4995 12-4

**PUPPIES, PUPPIES:** We  
Want to Buy Your Puppies!  
Registered or Mixed  
Breeds. We Have Homes  
Waiting for Them!  
573-784-9866 TFN



**2014 Limited Super Miles, Complete Exh. System, Tuner, Hi-Flow Air Filter, Matching Floor Boards, Tour Pak Detachable, Saddle Bag Lights, Custom Dynamics Turn Signals**

**NO DOC FEES!** **Only \$15,495**  
C&C Cycle  
Chariton, IA • 888-475-2243  
www.cc-cycle.com

# ONLINE FARM AUCTION

IMAN AUCTION CENTER | 34614 HWY 24 - SALISBURY, MO  
BID ONLINE NOW | FIRST LOT STARTS CLOSING DECEMBER 6 @ 6 PM

\* SELLING 800 LOTS OF EQUIPMENT, TOOLS, GUNS & AMMO \*



JD 4850, JD 4240 & IH 1086 Tractors \* JD 624E Wheel Loader \* Case IH 2388, Case IH 1660 & 540 MF Combines \* Case IH 2208 Corn Head, Case IH 1020 Grain Platforms \* Header Carts \* JD & MF Plows \* Disk Large to Small \* Field Cultivators \* Applicators \* Planters \* Drills \* Brush Hogs \* Box & 3 Pt Blades \* Skid Steer Snow Plow \* 3 Chevy Grain Trucks \* GMC 2 Ton Wrecker \* IH Prostar Road Tractor & Others \* 5 Semi Van Trailers & Hopper Trailers & Cars \* Lowboy Trailers \* Gn Stock Trailers \* ATV & Utility Trailers \* 2019 Gator \* ATV's \* Guns \* 10,000 Rounds of Ammo \* Snap On & Name Brand Tools \* Several Air Compressors \* Chains Saws \* Welders \* Torches \* Farm & Livestock Supplies \* Portable Cattle Chute \* Coral Panels \* Terms with full listing & bidding @ ImanAuction.com



**IMAN AUCTION COMPANY**  
660-388-6235 | 660-788-4298 | 660-414-7830 | 660-414-7967 | ImanAuction.com

## TAMA LIVESTOCK AUCTION

641-484-3465

Fed Cattle, Slaughter Cows & Bulls  
Every Wednesday at 9:00 am

**SPECIAL CATTLE SALE**  
Monday, December 7, 2020 - 11:00 AM  
**SPECIAL PRE-CONDITIONED CATTLE SALE**  
Friday, December 4, 2020 - 11:00 AM  
Friday, December 11, 2020 - 11:00 AM  
**SPECIAL BRED COW/HFR & FEEDERS SALE**  
Monday, December 21, 2020 - 11:00 AM  
For Markets & Listings go to  
**www.tamalivestock.com**



WORKING FOR YOU

TUES, DEC 8TH  
SPECIAL CALF & YEARLING SALE • 11 A.M.  
TUES, DEC 15TH  
SPECIAL CALF & YEARLING SALE • 11 A.M.  
TUES, DEC 29TH  
SPECIAL CALF & YEARLING SALE • 11 A.M.

Tues, Nov 24th Special Calf & Yearling Sale, 1890 Head Sold on a Very Good Market. Buyer Demand Was Very Good on Yearling & Calves w/Fall Shots Quality And Light Flesh Condition. Next Special Calf & Yearling Sale is Tues, Dec 8th. Looks Like 1500 Head or More For This Sale. If You Have Cattle To Sell, Give Us a Call. We Will Be Happy to Stop Out & Discuss Your Cattle Marketing Needs.

THANK YOU FOR YOUR BUSINESS! IT IS ALWAYS APPRECIATED!  
TOPPERS REPORT FOR NOV 24TH

STEERS			
COWLES FARMS	388# BWF	\$188.00	MARVIN HOOK 895# BLK \$137.00
JANICE HOBBS	401# BLK	\$180.00	JIM BRINKLEY 925# BLK \$144.00
MARK MACOMBER	423# BLK	\$177.00	<b>HEIFERS</b>
MAURICE & LYLA CRAIG	446# BLK	\$172.50	BILL GOODIN 333# BLK \$174.00
COLLEN SMITH	454# BLK	\$177.75	JESSE KNOWLES 363# BLK \$154.00
DENNIS RIGDON	475# BLK	\$183.00	HOMER WYATT 436# BLK \$151.00
SHAWN SCHILLING	471# BLK	\$157.00	JANICE HOBBS 421# BLK \$152.00
MATT FOSTER	472# BLK	\$178.00	MARK MACOMBER 505# BLK \$138.00
CLIFFORD BROWN	487# BLK	\$180.00	CLIFFORD BROWN 514# BLK \$141.00
DONNIE YANTIS	505# BLK	\$177.00	MAURICE & LYLA CRAIG 516# MXD \$139.50
JERRY & CONNIE			JERRY & CONNIE
MULLENIX	512# BLK	\$159.00	MULLENIX 517# BLK \$140.00
SANDY GREEK CATTLE	533# BLK	\$163.75	COLLEN SMITH 536# BLK \$139.00
ED BRIGHT	557# BLK	\$164.00	ED BRIGHT 546# BLK \$135.00
BRIAN KNIGHT	535# BLK	\$162.00	DALE HOUCK 585# MXD \$134.00
JAMES MCGILL	550# BLK	\$158.00	JERRY MULLENIX 593# BLK \$130.00
LOWELL BROWN	592# BLK	\$147.75	BILL GOODIN 621# BLK \$126.00
JERRY & CONNIE			JESSE KNOWLES 644# BLK \$122.00
MULLENIX	644# BLK	\$145.75	BRIAN KNIGHT 648# BLK \$124.00
RANDY KINCANNON	630# BLK	\$141.00	HOMER WYATT 651# BLK \$126.00
RON THOMAS	663# BLK	\$145.50	DWAIN & PAULA
REGGIE BRUNDAGE	677# BLK	\$142.50	MCCORMACK 700# MXD \$130.00
TOM FARLEY	682# MXD	\$135.50	MAURICE & LYLA CRAIG 751# BLK \$128.00
ROCKIN R FARMS	848# BLK	\$146.00	DWAIN & PAULA
JR LANDRUM	849# BLK	\$146.00	MCCORMACK 821# MXD \$130.35
JIM BRINKLEY	854# BLK	\$146.00	DAVID MULLINS 875# BLK \$121.50
ROCKIN R FARMS	876# BLK	\$145.75	DR WIGGINS 988# CHARS \$108.00
JR LANDRUM	892# BLK	\$145.85	

\*NEW TO ULM\*  
VIP TEXT MESSAGES  
JUST SEND A TEXT TO ULM @ 660-207-6795  
THEN REPLY YES TO SIGN UP  
REMEMBER OUR SALE IS BROADCAST ON CATTLEUSA.COM

WEIGH COWS \$35.00 TO \$62.00  
WEIGH BULLS \$67.00 TO \$79.50

VIP TEXTING CLUB  
TEXT: UNIONVILLE TO 660-207-6795

**UNIONVILLE LIVESTOCK MARKET**  
Unionville, MO  
Barn: 660-947-2451  
Curt Sporleder, Owner/Manager  
Home: 660-947-2870 • Mobile 660-216-2855 (BULL)  
Chris Davolt, Field Rep, Centerville, IA  
Home 641-856-8202 • Mobile 641-895-1339  
Willie Beeler, Field Rep, Lancaster, MO  
Home 660-216-3573  
David Hines, Field Rep, Mobile 660-216-4888  
Jerry Brundage, Field Rep, Princeton, MO  
Home 660-748-4081 • Mobile 660-953-1296  
Joe Wright, Field Rep, 641-414-6133  
Russelle Sleep, World Champion Auctioneer

**721 HEAD LAST SALE!!!!**

Last 3 Sales over 4000 sold

Start Selling Bred Cows 3:30 p.m.

# OSBORN LIVESTOCK AUCTION

Located 7 miles West of Cameron on  
HWY. 36, OSBORN, MO  
Barn Phone: (816) 675-2424  
Danny (816) 649-8485  
Transportation and Order Buying Available • Bonded • Insured

**SALE EVERY FRIDAY**

**NEXT SALE FRIDAY, DEC. 4TH**  
Expecting 1000+ Head **11:00 a.m.**

PAIRS w/ smaller calves	BRED
Younger .....\$1600	.....\$1385
Medium .....\$1490	.....\$1200
Older .....\$1150	.....\$825

STEERS	HEIFERS
300#.....\$1.88	.....\$1.58
400#.....\$1.77	.....\$1.52
500#.....\$1.70	.....\$1.48
600#.....(Potload 640#) \$1.50	.....\$1.33
700#.....\$1.42	.....\$1.31
800#.....\$1.33	.....\$1.26
900#.....\$1.28	.....\$1.20
1000#.....\$1.15	.....\$1.10
1100# Fats .....\$1.06	.....\$1.00

Top Cow \$0.57 - Lawson  
Top Bull \$0.80 - Clarksdale

Holsteins \$0.45-\$0.65  
Longhorn X & Dairy X \$0.70-\$1.10

Buying Butcher Cows & Horses Daily  
We Have 9 Butcher Cow Plants Represented

RECEIVING HOURS: Daily until sale time

Owner, Jayme Walker 816-665-4277  
Randy Vanderkooi, Fieldman 816-632-0694  
Ivan Kanak, Fieldman 816-724-1043

Frank Peterson, Fieldman 660-247-2306  
Dale Coble, Fieldman 816-213-3581  
Brandon Eichied, Fieldman 660-973-3044





**Edina Livestock Sales**  
**Edina, Missouri**  
 Weekly Sales Start @ 12:30pm

**Dec 4th - Special Feeder Calf Sale**

**Dec 11th - Special Feeder Calf Sale**

**Dec 18th - Special Cow Sale**  
 Several Smaller Dispersals Consigned

**WATCH OUR SALES LIVE AT DVAUCTION.COM**

**To Consign For Any or All Sales or For All Information Call:**  
 Owner - Kevin Strange • Cell: 660-341-9974  
 Ryan Strange • Cell: 660-341-9721  
 Sale Barn: 660-397-9999

**Field Reps:**

Bill Tom Hall 660-342-5420	Randy James 660-341-3066
Mike Bronestine 660-341-9965	Jason Bischel 660-216-0373
Trey Gashwieler 660-216-8571	John Powell 660-341-1717

**Need Rebar?**  
**Wholesale**



**A W Metal LLC**  
 Metal Roofing Headquarters

641-664-3990  
 www.awmetal.net



**2017 Polaris Ranger 900 XP**  
 Power Steering,  
 Full Cab,  
 Heater

**NO DOC FEES!**

**\$13,495**

**C&C Cycle**  
 Chariton, IA • 888-475-2243  
 www.cc-cycle.com

**Real Estate AUCTION**  
**Saturday, Dec 12 AT 10:00 AM**



**310 S First St, Ollie, Iowa -**  
**Home in Pekin School District with open floor plan!** One level living! Three bedroom, 2 bath home sitting on corner lot in Ollie. Large kitchen with abundant cabinetry open to the dining area and living room. Master bedroom and bathroom with large walk-in closet. The additional bedrooms are nice sized with walk-in closets. 34x30 garage with attached 13x24 lean-to. **Call 319-694-4522 to schedule a showing. Auction to be held on site.**

**Details and photos available online at:**  
**www.greinerrealestate.com**

**Owner: Keith Nelson**  
**Broker: Myron Greiner**

**TERMS: All announcements date of sale take precedence over printed material. 20% down day of auction. View website for additional terms.**

 **GREINER**  
 REAL ESTATE & AUCTION LLC

www.greinerrealestate.com  
 Auctioneer: Myron Greiner, Broker  
 Licensed in Iowa

**Greiner Real Estate & Auction LLC, Richland, Iowa 319-694-4522**

**Hertz Real Estate Services LAND FOR SALE**

**1,180.00 Acres m/l**  
**Appanoose County, IA**  
**Offered in 8 Parcels**

- Listings from 39.10 to 282.00 Acres m/l
- Cropland, Hay, Pasture, Timber, House, Outbuildings & Ponds.
- Open Leases for 2021 Crop Year
- 2 Miles North of Numa, IA

Washington • 319-382-3343  
 www.Hertz.ag

**CASH PRICE MOBILE HOMES**

**CALL 573-249-3333**  
 www.marktwainmobilehomes.com

*Season's Greetings*

**REAL ESTATE RECREATIONAL**

**LINCOLN HOMES SPRING SALE!** Quality Built Modular & Manufactured Home On Display. Factory Direct Prices With Free Set Up & Installation Within 100 Miles.

**FOR SALE:** 2017 Ranger XP 90 EPS Sage Green, 400 Hrs., 4500lb Wench, Flip Down Windshield, Rear Panel & Poly Sport Roof, \$9,500 OBO. 641-622-2010 12-18

Lincoln Homes  
 Hwy 30  
 Ogden, IA 50212  
 lincolnhomesia.com  
 515-275-2717 TFN

Save Some Trees!  
 Read The Paper Online!  
 www.hawkeyetrader.com


**TWO SALES ONE DAY**  
**Keosauqua, IA**  
**Goehring Hereford Production Female Sale**  
**Wednesday, December 9th At 1:00 PM**

50 head of spring bred heifers  
 AI Service sires:  
 GO KING E33  
 BG LCC PERFECTO 84F  
 EF BR VALIDATED B413  
 F FINAL TEST 722

Selling daughters of  
 TH FRONTIER 174E  
 HH ADVANCE 4075B  
 HH ADVANCE 6248D  
 H RESOLUTE 7259  
 BEHM 100 WCUDA 504C  
 CHURCHHILL PILGRIM 632D  
 LCS PERECTO 11B  
 CHURCHHILL SENSATION 028X

Heifer pregnancy are sexed.  
 Heifers due to start calving Feb 1st

Hereford Catalog is online at [keosauquasaleco.com](http://keosauquasaleco.com)  
 Pictures will be posted on website and Goehring Hereford Facebook  
 Auctioneer Cody Lowderman 309-313-2171  
 Bill Goehring 641-919-9365



**WORKING FOR YOU**

**SPECIAL CALF & YEARLING SALE**  
**TUES, DEC 8TH**  
**EXPECTING 1500 HEAD**  
**SALE STARTS AT 11:00 A.M.**

**ROCKIN R FARMS:** 240 FANCY BLK ANGUS ANGUS X YRLG STRS  
 COMP VAC 825-875#

**A & A FARMS:** 220 FANCY BLK ANGUS STRS/HFRS  
 VACX2 LTW 400-550#

**BILLY BEELER:** FANCY BLK YRLG STRS COMP VAC

**JL NEWLAND:** 72 FANCY BLK ANGUS ANGUS X CALVES  
 VACX2 LTW 550-700#

**TREVOR TUCKER & LARRY**

**R-MEN FARMS:** 68 BLK CALVES VAC NICKEL GENETICS HFRS  
 RQ 500-650#

**VANDYNE:** 64 BLK BWF CALVES VACX2 LTW 500-600#

**TRIPLE K FARMS:** 55 BLK HFRS VACX2 LTW 500-550#

**CHARLIE SNUGGS:** 54 FANCY BLK ANGUS ANGUS X CALVES  
 VACX2 LTW 600-700#

**ED BRIGHT:** 50 FANCY BLK ANGUS CALVES VAC 550-650#

**TOM TUCKER:** 41 FANCY BLK ANGUS YEARLG STRS/HFRS  
 VACX2 700-750#

**ROBBIE & KELLY VALENTINE:** 35 FANCY BLK ANGUS ANGUS X CALVES  
 VAC 450-650#

**MARLA VASEY:** 30 BLK CALVES VACX2 LTW 500-600#

**LINDA COMPTON:** 27 BLK CALVES VACX2 LTW 500-625#

**BRAD GRIFFIN:** 27 BLK CALVES VAC LTW 500-650#

**JR BRUCE:** 25 FANCY BLK ANGUS CALVES VAC 500-650#

**MATT & KELLY CRONE:** 23 BLK CALVES VACX2 LTW 550-700#

**DANNY GENTRY:** 20 X-BRED CALVES VACX2 LTW 500-700#

**TOM TUCKER:** 20 FANCY BLK ANGUS STRS VACX2 LTW 550-650#

**CHAD PECK:** 15 RED ANGUS X CALVES VAC 550-650#

**\*\*WATCH OUR SALE LIVE AT: [cattleusa.com](http://cattleusa.com)\*\***

**TINA LIVESTOCK MARKET**

435 W 2nd St, Tina, MO 64682  
 Casey & Amelia Flinn, Owners

**Next Sheep, Goat & Hog Sale:**  
**Saturday, Dec 5 @ 10AM**

**Cattle Sale: Mon, Dec 7 @ 11AM**

**Special Feeder Sale**  
**Mon, Dec 14**  
**Expecting 1000 hd!**

**Special Cow Sale: Fri, Dec 18 @ 6PM**  
**Expecting 500hd**

**Cattle Sales: Mondays @ 11AM**  
**Sheep, Goat & Hog Sales:**  
**1st & 3rd Saturdays @ 10AM**  
**Special Cow Sales: 4th Fri of Month @ 6PM**

*Open all day on Sundays to receive livestock!*

Barn: 660-622-4214 • Casey Flinn, Owner: 816-769-7532  
 Field Reps  
 Bobby Morrison 816-345-0518 • Ben Peterson 660-247-2759  
 Sheep/Goats/Hog: Clark Allen 660-973-6826

*Find us on facebook at*  
**Tina Livestock Market**

**12th Annual Big Bend Ranch Female Sale**  
**Wednesday Dec 9th @ 5:00**

100 Angus 2nd calf heifers, bred to Hereford bulls  
 Start calving March 1st  
 Ultrasounded early & will be sorted into tight calving groups w/sexed calves

300 fancy Angus & BWF heifers, AI bred to GAR Ashland  
 Start calving Feb 10th  
 Ultrasounded to determine AI and calf sex cleaned up with Marcy cattle or Trump angus bulls.  
 Heifers are all Sandhills origin and will suit the most particular buyers

**www.keosauquasaleco.com**  
 Find us on Facebook

**Keosauqua Sales Co.**  
 Keosauqua, IA  
**Bill Goehring 641-919-9365**  
**Lucas Goehring 641-919-6272**  
**Sale Barn 319-293-3508**

**UNIONVILLE LIVESTOCK MARKET**  
 Unionville, MO  
**Barn: 660-947-2451**  
**Curt Sporleder, Owner/Manager**  
 Home: 660-947-2870 • Mobile 660-216-2855 (BULL)  
 Chris Davolt, Field Rep, Centerville, IA  
 641-895-1339  
 David Hines, Field Rep, Mobile 660-216-4888  
 Jerry Brundage, Field Rep, Princeton, MO  
 Home 660-748-4081 • Mobile 660-953-1296  
 Billy Beeler, Field Rep, Lancaster, MO  
 Home 660-216-1387  
 Joe Wright, Field Rep. 641-414-6133  
 Russele Sleep • World Champion Auctioneer

# Home at Auction



**January 7th, 2021**  
**5:30 p.m.**  
 2109 59th St. • Des Moines, Iowa



**General Description:**

A beautiful 1.5 level home w/mature trees & plenty of curb appeal. This home has a 240 sq ft deck area, and a detached garage. 2 bedrooms, 1 bathroom & some hard wood floors. This home will need minor cosmetic updates inside along w/ some remodeling updates. It is located in the friendly Merle Hay area neighborhood w/many parks nearby. A great starter home, or Handy Man project home. Be sure to schedule your viewing today!



**Sq Ftg Living Area:** 1,130 sq ft, plus 672 sq ft basement w/325 sq ft of basement finished

**Call Mike Bobst today for your appointment to view!**  
 515-468-7674

**Net Taxes:** \$3,600.00 **Lot Size:** Regular lot- 50 x 122 ft

**School District:** Des Moines, Roosevelt High School

**Terms:** Cash, 10% down payment day of sale with balance due on or about February 7th, 2021 at time of closing. Property sold in As-Is condition with NO contingencies.

**Estate of Roger Burken**

**Daugherty Auction & Real Estate Services, LLC.**

*Chad Daugherty ~ Owner/Auctioneer • Kelly Daugherty ~ Auctioneer*  
*North River Realty, Mike Bobst, Broker • Jamie Bergkamp, Closing Attorney*  
 416 Greene St. Adel, IA (515) 993-4159 ~ [d\\_auction@hotmail.com](mailto:d_auction@hotmail.com)

See Us on the Web at [www.daughertyauction.com](http://www.daughertyauction.com) or "Like" us on Facebook

The information in this brochure is from sources deemed to be reliable but it cannot be guaranteed by Daugherty Auction and Real Estate Services, LLC.



2012 Harley  
 Tri-Glide  
 Only 86K,  
 Super Clean  
 & Super Nice!

**NO DOC FEES!** **\$14,995**

**C&C Cycle**  
 Chariton, IA • 888-475-2243  
[www.cc-cycle.com](http://www.cc-cycle.com)



**WANTED**

**Standing Timber**

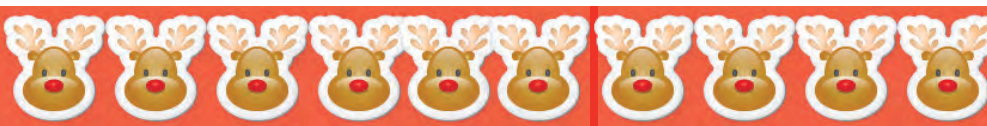
Buying Walnut, Oak and Maple  
 20 Years In The Business  
 I Pay Before I Cut  
**RJ Lumber LLC • Raymond Yutzy**  
 VM: 641-722-3348

**MASTER BUILDERS**  
**Post Frame Buildings**



**24 x 30 x 10**      **30 x 40 x 10**  
 2 Overhead Doors      2 10x8 Overhead Doors  
 1 Walk Door      1 Walk Door  
 Concrete Floors      Concrete Floors  
**\$19,600**      **\$21,900**

All Sizes On Sale  
 Price Includes All Tax and Labor  
**Call (641)295-4970 • (641)295-4467**  
 Customers are responsible for all permits.



**DEADLINE** **DON'T FORGET!**  
 Our Deadline for Display ads is Tuesdays at 5:00 PM  
 & Our Deadline for Classified Ads is Wednesdays at 12:00 PM

# KARS, INC

**ON EUCLID**  
 Des Moines, IA  
**515-265-0215**  
 As for DeMarcus

[www.karsincdsm.com](http://www.karsincdsm.com)

<p><b>2018 Chevy Cruze LT</b>                  4 Cyl, Auto, Turbo, Full Power, Keyless Entry, WiFi Hotspot, Navigation, 64K Miles, <b>\$12,995</b></p>	<p><b>2012 Cadillac Escalade Premiere Edition</b>                  AWD, 6.2 V8, Auto, Loaded, Heated Leather, 3rd Row Seating, 205K <b>\$13,995</b></p>	<p><b>2014 Dodge Challenger SXT</b>                  AWD, V6, Auto, Full Power, CD/MP3, Sunroof, Heated Seats, 106K <b>\$14,995</b></p>	<p><b>2016 Jeep Wrangler Sport</b>                  4WD, V6, Auto, Air, Very Well Equipped, 75K <b>\$25,995</b></p>	<p><b>2012 Jeep Wrangler Rubicon</b>                  4WD, V6, Auto, Air, Loaded, Low Miles, Only 53K Miles <b>\$29,995</b></p>
<p><b>2006 GMC Yukon Denali</b>                  AWD, 6.0 V8, Auto, Full Power, 3rd Row Seating, Heated Leather, CD Changer, Sunroof, 140K, <b>\$10,995</b></p>	<p><b>2007 Chevy Avalanche LTZ</b>                  4WD, V8, Auto, Loaded, Heated Leather, Full Power, Sunroof, 177K <b>\$10,995</b></p>	<p><b>2009 Honda CR-V EX-L</b>                  4WD, 4 Cyl, Auto, Loaded, Full Power, Sunroof, 124K <b>\$9,995</b></p>	<p><b>2011 Harley FLHX Street Glide Ultra Classic</b>                  Only 21K Miles <b>\$10,950</b></p>	<p><b>2011 Ram 1500 Laramie</b>                  4x4, Crew Cab, 5.7 Hemi, Auto, Leather, Full Power, CD/MP3, Heated Seats, 131K <b>\$20,995</b></p>
<p><b>2013 Nissan Rogue S</b>                  AWD, 4 Cyl, Auto, Nicely Equipped, Keyless Entry, CD, Power Windows, 75K <b>\$11,995</b></p>	<p><b>2010 GMC Acadia SL</b>                  V6, Auto, Loaded, 3rd Row Seating, CD/MP3, Keyless Entry, 141K <b>\$7,995</b></p>	<p><b>2011 Chevy HHR LT</b>                  4 Cyl, Auto, Air, Power Windows &amp; Locks, Cruise, Tilt, Remote Start, CD, Power Seat, 80K Miles, <b>\$7,995</b></p>	<p><b>2011 Chevy Equinox LT w/2LT</b>                  4 Cyl Auto, Loaded, Heated Leather, Full Power, 105K <b>\$8,995</b></p>	<p><b>2012 Ford Fusion SEL</b>                  4 Cyl, Auto, Air, Heated Leather, Full Power, CD/MP3, 141K <b>\$5,995</b></p>



# WHITETAIL PROPERTIES REAL ESTATE

HUNTING | RANCH | FARM | TIMBER

## LISTED OR SOLD IN 2020

Davis Co, IA - 83 acres +/- An awesome mix of improved habitat and food plots for hunting with the potential from combined CRP and tillable cash rent for this investment. **SOLD**

Iowa Co, IA - 51.25 acres Along the Iowa River sits this affordable recreational property with a camp, fish, swim, hunt - many options await the owners of this tract. **SOLD**

Jasper Co, IA - 4.8 acres +/- A small tract of land perfect for building your dream home with income through CRP, and only 18 minutes from Des Moines city limits. **SOLD**

Jasper Co, IA - 43 acres +/- This recreational and hunting tract along the Skunk River Valley offers income and is a well-known river corridor in Iowa to hunt big whitetails. \$167,700

Jasper Co, IA - 73 acres +/- This farm is so diverse and offers income-generating CRP on deer and turkeys, building sites, rolling ridges, secluded pond and so much more. **SOLD**

Johnson Co, IA - 13 acres +/- This Century Farm acreage located a short drive north of Des Moines features a historic farmhouse, barn, outbuildings, ponds, and a pool. **PENDING**

Keokuk Co, IA - 797 acres +/- You've seen it in your dreams; a huge farm bursting with wildlife and top-end accommodations. Welcome to the extraordinary Skunk River Lodge. **SOLD**

Mahaska Co, IA - 97.22 acres +/- This property has a new CRP contract that will generate a return while offering nice hunting upside. **SOLD**

Tama Co, IA - 80 acres +/- This Iowa River corridor property offers a long-term, high-rate payment along with deer, turkey, waterfowl, and pheasants. \$498,000

Washington Co, IA - 13 acres +/- This acreage sits conveniently across the road from Lake Darling State Park, and includes a house, machine shed, outbuildings, and a pond. \$287,000

Washington Co, IA - 40.83 acres +/- This all timber recreational property sits at the confluence where the English River meets the Iowa River, just a short drive from Iowa City. **SOLD**

Washington Co, IA - 95 acres Income-producing CRP and timber tract with English River. **SOLD** ROI at asking price. Heavy deer trails throughout evidence a strong deer population. **SOLD**

Adams Co, IA - 18 Acres Good bedding areas, East Nodaway River runs through farm, Mile South of Prescott, **SOLD**

Clarke Co, IA - 40 Acres on building site, +/- 23 acres of FSA Tillable, +/- 17 acres East side access, **SOLD**

Clarke Co, IA - 83 Acres, Brick Ranch style home, 4 pole buildings, +/- 46 acres currently in hay, +/- 33 acres in pasture, \$699,000.

Clarke Co, IA - 106 acres +/- This combo farm features include multiple pond building and a large portion of part of the farm and 1 established food plot. **SOLD**

Decatur Co, IA - 30 Acres, 2 building sites, 1 plus acre pond, Mature timber, Hwy 2 hard surface frontage, \$186,000.

Decatur Co, IA - 377 Acres CRP, Secluded farm, Approx. 1878 sq ft m. **SOLD** finished food plots, **SOLD**

Marion Co, IA - 115 Acres of farm, +/- 88.8 acres CRP. Great access from road. **SOLD**

Marion Co, IA - 155 acres +/- Located less than an hour from Des Moines Metro, this great farm has established food plots, tillable and CRP. **SOLD**

Polk Co, IA - 28.35 Acres of food plots, Des Moines River frontage, Mixture of brush, **SOLD**

Ringgold Co, IA - 54x75 pole barn, big timber and CRP, **PENDING**

Taylor Co, IA - 13.18 Acres Looking for a smaller farm that is priced right? Then look no further. **SOLD** all-around recreational property is priced to sell. **SOLD**

Taylor Co, IA - 123 acres +/- Looking for a combo farm with great CRP income? Look no further as this farm has that and many more features. \$467,400

Union Co, IA - 123 acres +/-, +/- 123 acres of tillable, Established CRP, **PENDING** \$948,000. **PENDING**

Wayne Co, IA - 130 Acres, One of a kind farm, Custom Built home, Approx. 1657 sq ft, 3 bedrooms, 2 bath, 3 car attached garage, Metal Shop, \$1,350,000.

Appanoose Co, IA - 34 acres This property is part of the Coves of Sundown Lake Subdivision with right of access to Sundown Lake. A potential building site provides nice views. **SOLD**

Davis Co, IA - 316 acres +/- Beautiful combination farm with tillable, timber, great building sites, and paved road frontage! \$1,070,000

Henry Co, IA - 96 acres +/- This secluded property offers income and great deer and turkey hunting on a stocked pond. CRP pays \$9573/year and is enrolled through 2030. **SOLD**

Henry Co, IA - 156 acres +/- High-quality tillable farm along Highway 78 with CSR2 enrolled in CRP, grain storage on site. A great farmland investment opportunity. **SOLD**

Henry Co, IA - 317 acres Located on the Skunk River near Mt. Pleasant with income from CRP and incredible whitetail, turkey, pheasant and small game hunting opportunities. **SOLD**

Jefferson Co, IA - 61 acres Nice farm with about 35 acres tillable, timbered creek bottom and a great building site with awesome views. **PENDING**

Jefferson Co, IA - 240 acres +/- This scenic property has everything needed to grow and hold big whitetails and also has an awesome building site that is less than 100 yards off a paved road! \$799,000

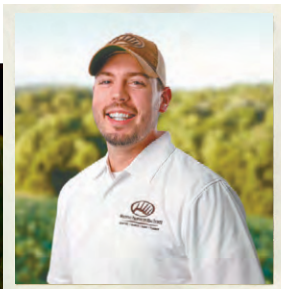
Lee Co, IA - 47 acres +/- Managed hunting property with cabin, year-round creek, pond, and paved road in Southeast Iowa! Great building site for a home also. **SOLD**

Monroe Co, IA - 120 acres +/- Turnkey hunting property with a 4 BR/3BA home and trophy managed neighborhoods in Southeast Iowa. **PENDING**

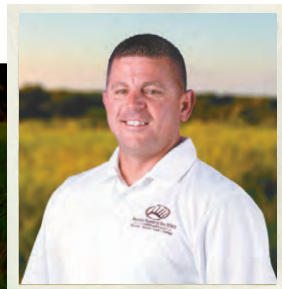
Monroe Co, IA - 219 acres +/- Custom 3/3 home with all amenities and beautiful patio with stone fireplace. This highly managed farm provides world-class hunting. **SOLD**

Van Buren Co, IA - 90 acres +/- Located in a QDM neighborhood, this certified tree farm has a pond, custom home, storage shed and hunting opportunities. \$25,000 **PENDING**

Wapello Co, IA - 280 acres +/- Totally secluded high-end turn-key hunting farm with very nice buildings, tower blinds and a history of big bucks. Gate to the road location! **SOLD**



**BEN HARSHYNE**  
Licensed in Iowa  
(319) 853-1162



**GABE ADAIR**  
Licensed in Iowa  
(515) 971-8182



**RICH BAUGH**  
Licensed in IA, IL & MO  
(319) 750-9273

TO VIEW THESE PROPERTIES AND HUNDREDS MORE GO TO  
**WHITETAILPROPERTIES.COM**



Whitetail Properties Real Estate, LLC - DBA Whitetail Properties | In the States of Nebraska & North Dakota - DBA Whitetail Trophy Properties Real Estate LLC | Licensed in IL, MO, IA, KS, KY, NE & OK - Dan Parasz, Broker | Licensed in AR, CO, GA, MN, ND, SD, TN & WI - Jeff Evans, Broker | Licensed in FL, OH, NY & PA - Jefferson Kirk Gilbert, Broker | Licensed in TX & NM - Joey Ballington, Broker | Licensed in IN - Bill Minor, Broker | Licensed in AL, GA, LA, & MS - Sybil Stewart, Broker | Licensed in TN - Chris Wakelield, Broker | Licensed in TN - Bobby Powers, Broker | Licensed in AR - Anthony Chrisco, Broker | Licensed in SC, NC & VA - Chip Camp, Broker | Licensed in NC - Rich Baugh, Broker | Licensed in MI - Edmund Joel Nogaski, Broker | Licensed in WV - Debbie S. Laux, Broker | Licensed in ID, MT, OR, UT & WY - Aaron Milliken, Broker



# KARS, INC

OF PLEASANT HILL  
[www.kars-inc.com](http://www.kars-inc.com)

5701 E. University • Pleasant Hill, IA

515-564-0937

## 12 CARS OF CHRISTMAS

**2008 Ford F250 Super Duty**  
Extra Clean!



**\$13,995**

**2018 Chevy K2500HD LT**  
4WD, 1-Owner



**\$30,995**

**2005 Chevy K1500 Plow Truck**



**\$13,995**

**2015 Chevy K1500 LT**  
Crew Cab, 4WD



**\$26,900**

**2012 Ford F150 Super Crew**  
4WD, Lariat



**\$20,495**

**2016 Ram 1500 SLT**  
Crew Cab, 4WD



**\$20,995**

**2013 Chevy K1500**  
Ext Cab, 4WD  
Extra Clean



**\$13,995**

**2014 Ford F150 Super Crew XLT**  
4WD



**\$23,195**

**2015 Chevy Colorado**  
Ext Cab, 4x4,  
Extra Clean!



**\$15,995**

**2014 Chevy Equinox LT**  
AWD



**\$10,695**

**2016 Chevy Tahoe LTZ**  
4WD



**\$31,495**

**2008 Dodge Ram SLT**  
4x4,  
Only 80K Miles



**\$14,695**